



model 9020

Three Sided Safety Sign

FEATURES & BENEFITS

OPTIONS

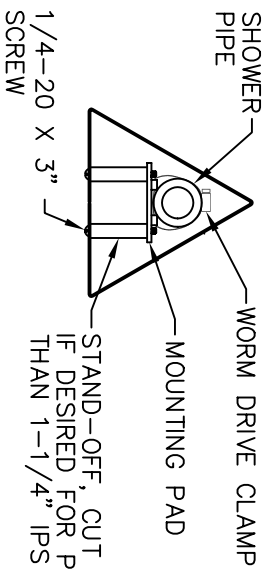
For more information, visit www.hawesco.com or call (888) 640-4297.



SPECIFICATIONS

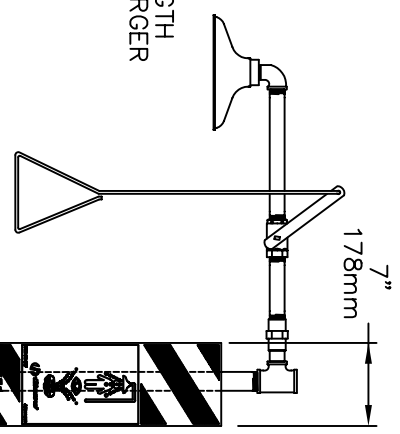
Model 9020 ABS plastic 3-sided sign is for use on Haws combination shower and eyewash units. This large yellow ABS plastic sign with Safety Green printed stripes is visible from multiple directions. Features universal pictorial of an emergency shower and eyewash. It can be mounted on a wall for 2 way visibility, or on a shower upright for 3 sided visibility. To be used only on combination shower and eyewash units.

APPLICATIONS

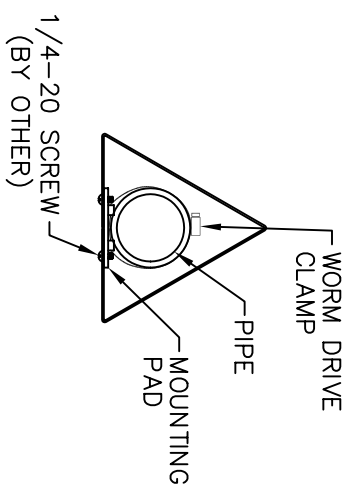


VIEW A-A
SCALE: 1/4
1-1/4" IPS MOUNTING

STAND-OFF, CUT TO LENGTH IF DESIRED FOR PIPES LARGER THAN 1-1/4" IPS

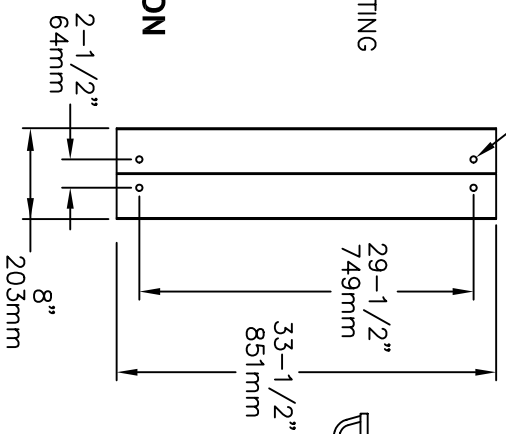


4X ϕ 5/16" MOUNTING HOLES (CUSTOMER TO SUPPLY HARDWARE)



LARGE PIPE CONFIGURATION

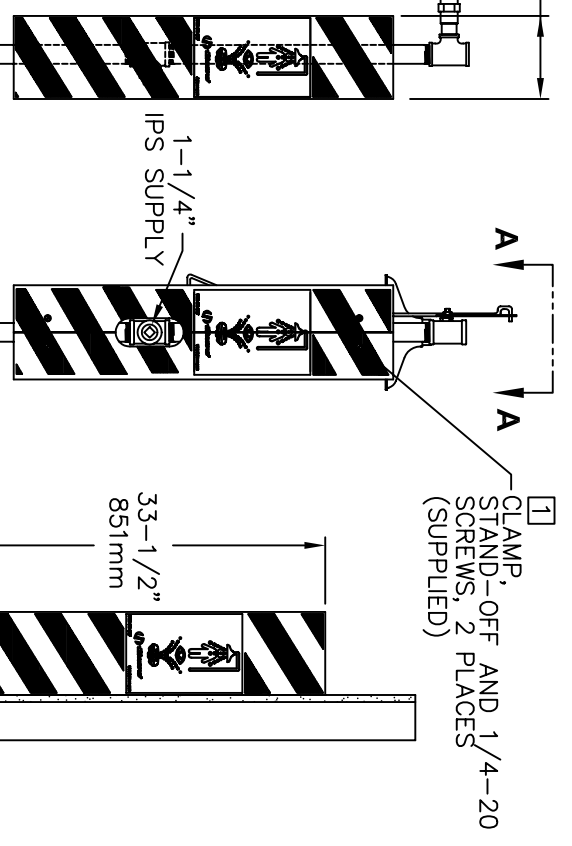
SCALE: 1/4
3" IPS MOUNTING (MAX)



IMPORTANT
SIGN TO BE INSTALLED ONLY ON EYEWASH/SHOWER COMBINATIONS

NOTES:

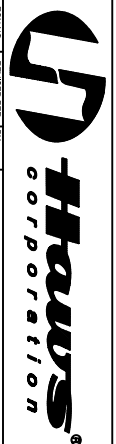
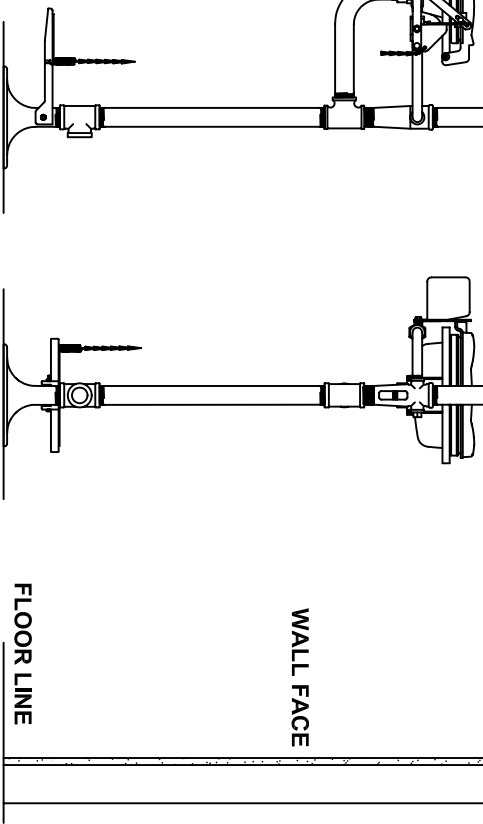
- 1 ASSEMBLE BOTH CLAMPS AND MOUNTING PADS TO PIPE TO MATCH MOUNTING HOLE LOCATIONS BEFORE ATTACHING SIGN.



1 CLAMP, STAND-OFF AND 1/4-20 SCREWS, 2 PLACES (SUPPLIED)

SHOWER MOUNTING
(SHOWN WITH MODEL 8200, ORDERED SEPERATELY)

WALL MOUNTING



1455 KLEPPE LANE
SPARKS, NEVADA 89431
(775) 359-4712 FAX (775) 359-7424
E-MAIL: HAWS@HAWS.CO.COM
WEBSITE: WWW.HAWS.CO.COM

EQN NO.:	11750A00	MODEL(S):	8200
ISSUANCE DATE:	11/94	REV.:	5
DESIGNER:	11750A00	DATE:	11/94
APPROVER:		SCALE:	1" = 1"
		INSTRUMENT TYPE:	INSTALLATION/EXHIBIT
		INCO FAX DOC #:	29020
		DATE:	11/94
		SIZE:	A
		SHEET:	1 OF 1