

ELKAY[®]

SPECIFICATIONS

Harmony[®] Undermount Single Bowl Sink Models ELU1716 and ELUH1716

GENERAL

Highest quality sink formed of #18 (1.2mm) gauge, type 304 (18-8) nickel bearing stainless steel. Undermount.

DESIGN FEATURES

Bowl Depth: 7-1/2" (191mm).

Finish ELU1716: Exposed surfaces are hand blended to a Lustrous Satin finish.

Finish ELUH1716: Exposed surfaces are hand blended to a Lustrous Highlighted Satin finish.

Underside: Underside of sink is fully protected by heavy duty Sound Guard™ undercoating to reduce condensation and dampen sound.

OTHER

Drain Opening: 3-1/2" (89mm).

Note: All Elkay undermount sinks are designed to affix to the underside of any solid surface countertop.

Installation: See illustrated profile below.

Sink complies with ASME A112.19.3-2008 / CSA B45.4-08.



These sinks are listed by the International Association of Plumbing and Mechanical Officials as meeting the requirements of the Uniform Plumbing Code.

OPTIONAL ACCESSORIES

Bottom Grid: LKWOBG1617SS

Cutting Board: CB1713 (ELUH model only)

Drain: LK99

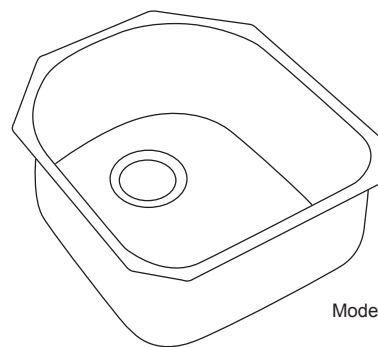
Mounting Clip: LKUC8

Rinsing Baskets: LKWRB1617SS, LKWERBSS

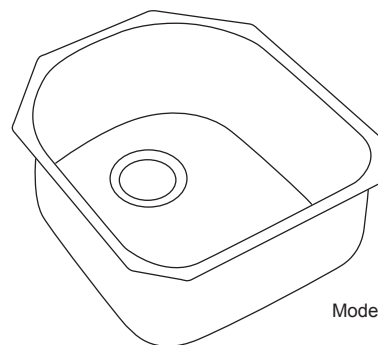
Utensil Caddy for Rinsing Basket: LKWUCSS

SINK PACKAGE(S)

MODEL	SINK	BOTTOM GRID	QTY	DRAIN	QTY
ELU1716DBG	ELU1716	LKWOBG1617SS	1	LK99	1
ELUH1716DBG	ELUH1716	LKWOBG1617SS	1	LK99	1



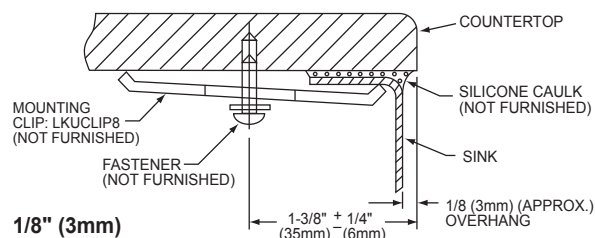
Model ELU1716



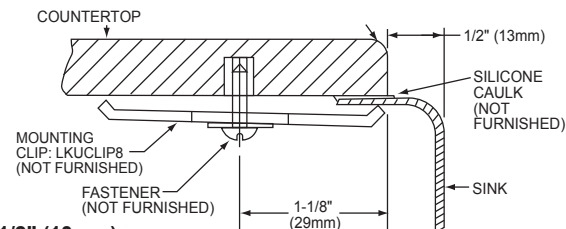
Model ELUH1716BAP

Installation Profile of ELU and ELUH Single Bowl Models

The template provided with each ELU/ELUH sink provides the only type of installation recommended by Elkay.



**1/8" (3mm)
Countertop Overhang
(ELU Single bowl)**



**1/2" (13mm)
Reveal
(ELUH Single bowl)**

In keeping with our policy of continuing product improvement, Elkay reserves the right to change product specifications without notice. Please visit elkay.com for the most current version of Elkay product specification sheets.

This specification describes an Elkay product with design, quality, and functional benefits to the user. When making a comparison of others producers offerings, be certain these features are not overlooked.

ELKAY[®]

SPECIFICATIONS

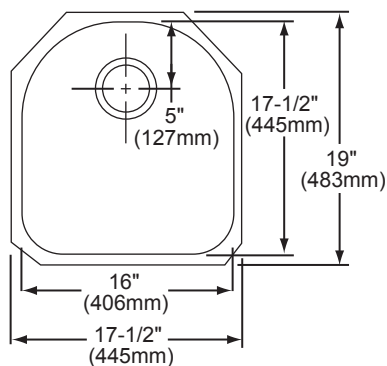
Harmony[®] Undermount Single Bowl Sink Models ELU1716 and ELUH1716

SINK DIMENSIONS*

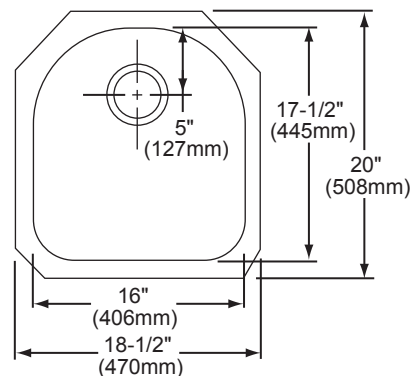
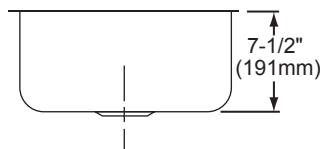
Model Number	Overall		Inside Bowl			Cutout in Countertop	Minimum Cabinet Size
	L	W	L	W	D		
ELU1716	17 1/2 (445mm)	19 (483mm)	16 (406mm)	17 1/2 (445mm)	7 1/2 (191mm)	See Template**	21 (533mm)
ELUH1716	18 1/2 (470mm)	20 (508mm)	16 (406mm)	17 1/2 (445mm)	7 1/2 (191mm)		24 (610mm)

*Length is left to right. Width is front to back.

**Template #74180224 (ELU1716) or #74180249 (ELUH1716) is packed with every sink.



Model ELU1716 Illustrated



Model ELUH1716 Illustrated

In keeping with our policy of continuing product improvement, Elkay reserves the right to change product specifications without notice. Please visit elkay.com for the most current version of Elkay product specification sheets.

This specification describes an Elkay product with design, quality, and functional benefits to the user. When making a comparison of others producers offerings, be certain these features are not overlooked.