



# model H1011.8HPSHO2

ADA Vandal-Resistant Chilled Motion-Activated Polished Fountain

## FEATURES & BENEFITS

### CONSTRUCTION

Rugged ADA accessible 18 gauge Type 304 high polished Stainless Steel swirl design bowl, 14 gauge Type 304 high polished Stainless Steel bracket, and a vandal-resistant bottom plate provides a long lasting unit with added peace of mind.

### HANDS OFF

Touchless operation for safety and peace of mind.

### MOUNTING

Heavy-duty 16-gauge galvanized steel mounting frame with welded-in heavy-duty 10 gauge mounting plate with pre-punched mounting holes. Further convenience is given to the chiller with the integral fold-out shelf.

### BUBBLER HEADS

Polished chrome-plated brass bubbler head with integral laminar flow prevents splashing while providing a superior flow pattern. The integral 11/16" dia. basin shank and stainless anti-rotation roll pin for vandal resistance strength. Shielded, angled stream opening provides a steady source of drinking water at .45 gpm.

### FOUNTAIN VALVES

Fountain incorporates touchless sensor operated stainless steel solenoid valves controlled by a transformer for hands free operation. A pressure regulator is used to adjust the bubbler flow according to incoming water pressures.

### CUSTOM LOGO PANEL

Personalize your new or existing fountain or bottle filler where space permits with an optional customizable 10" high by 4.25" wide stainless steel panel. Virtually any company logo, event logo or graphic can be placed on this panel. Mounted with strong, moisture-resistant adhesive backing.

### VANDAL-RESISTANT

The bubbler heads, round bowls, drain strainers and bottom plates are locked in place, discouraging unwanted vandal tampering.

## OPTIONS

Cane Detection, Floor Mounted: Model SK6, floor mounted cane detection for the Haws Hi-Lo drinking fountains.

Custom Logo Panel: Model 6475, Hydration By Haws™ logo panel with customization options.

Bottle Filler: Model 1920HPSHO, bottle filler can be a stand-alone station, or mounted above Haws 1001HPS and 1011HPS series drinking fountain models.

Back Panel: Model BP32HPS, satin finish stainless steel 32" back panel for model 1920HPS bottle filler.

For more information, visit [www.hawsc.com](http://www.hawsc.com) or call (888) 640-4297.



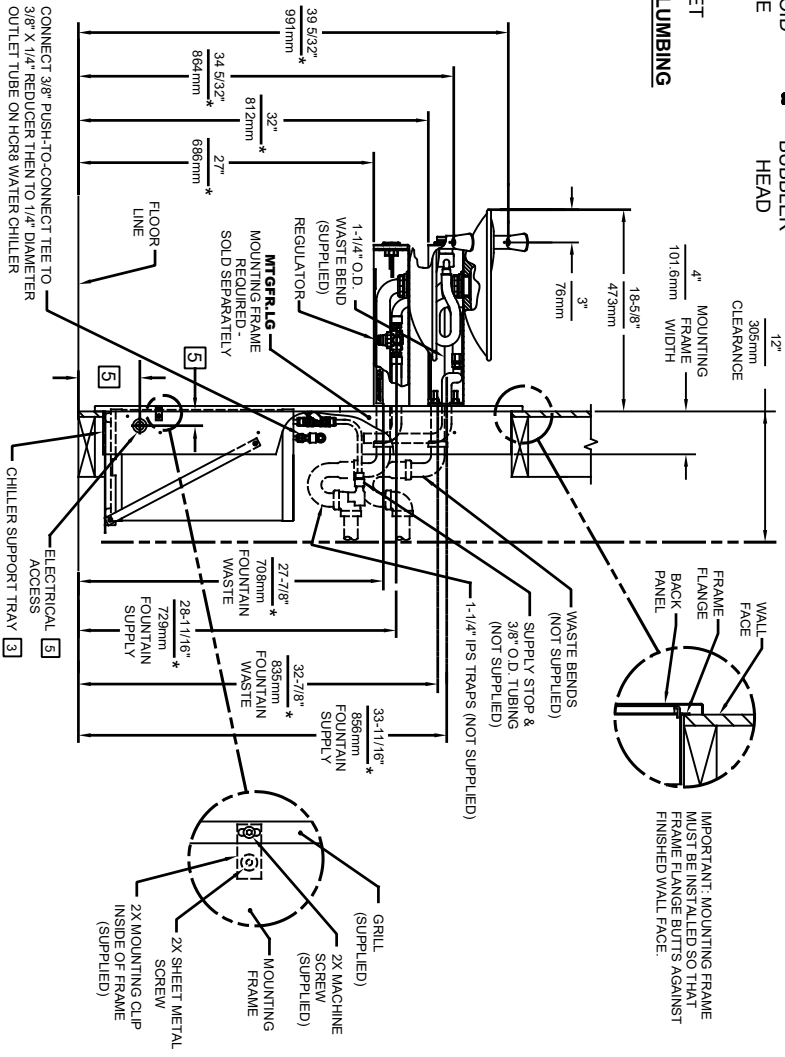
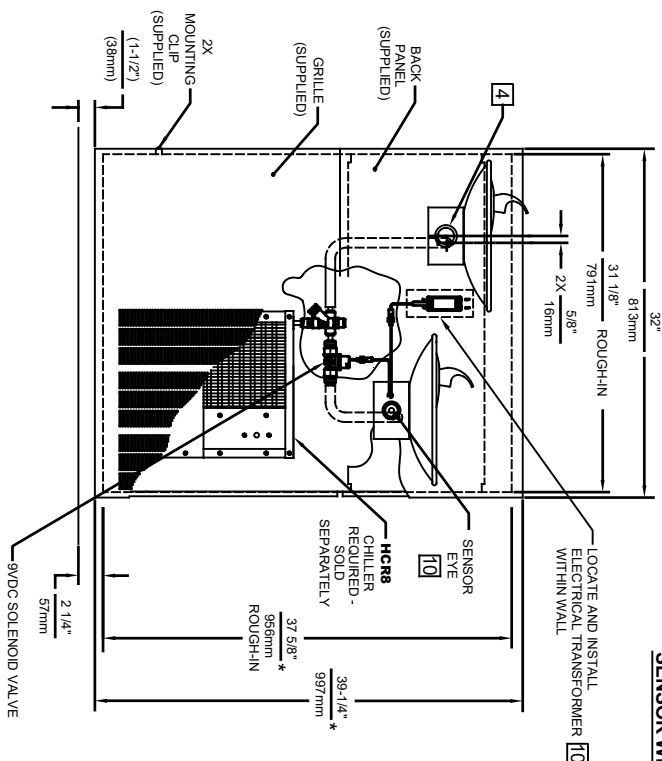
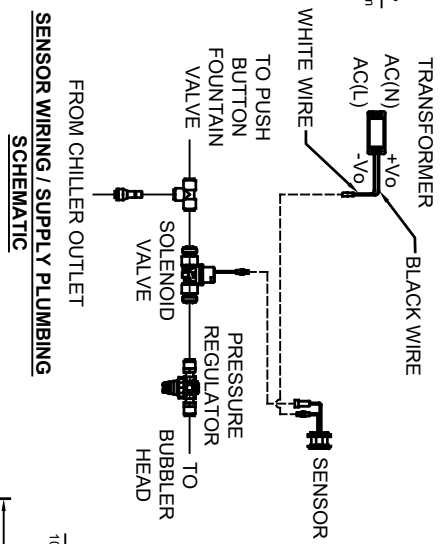
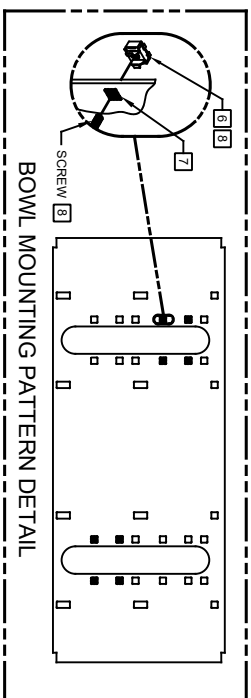
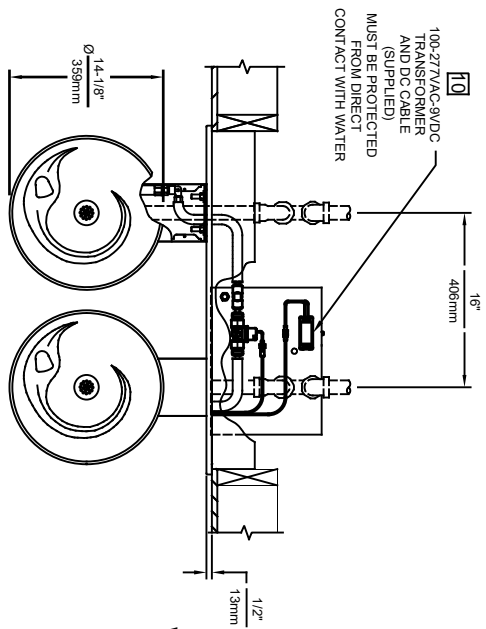
## SPECIFICATIONS

Model H1011.8HPSHO2 electric vandal-resistant ADA wall mounted motion activated drinking fountain shall include dual 18 gauge Type 304 high-polished Stainless Steel basins with integral swirl design, 14gauge Type 304 Stainless Steel wall brackets, 100% lead-free waterways, touchless sensor operated stainless steel solenoid valves with 30-second obstruction time-out controlled by a transformer, polished chrome-plated brass vandal-resistant bubbler heads with integral laminar anti-squirt flow, chrome-plated brass vandal-resistant waste strainers, vandal-resistant bottom plates, high-polished stainless steel back panel and louvered intrusion-proof grill, high and low fountain mounting levels, and 1-1/4" O.D (3.2 cm) waste pipes. The R-134a refrigeration system is hermetically sealed and delivers a minimum of 8 gph (30.3 L) of water at 50° F (10° C) cooled from 80° F (26.7° C) inlet water at 90° F (32.2° C) ambient. 115 Volts, 60Hz, rated watts: 370, full load amps: 5

**REQUIRES MODEL HCR8 AND MTGFR.LG PRICED SEPARATELY.**

## FOR INDOOR USE ONLY APPLICATIONS

Specifically, this type fountain may be placed in settings such as: schools, office buildings, shopping malls, and other indoor environments where there is a demand for a chilled water source and/or wheelchair access. Electric water coolers are not recommended or designed for outdoor applications or enclosed pool areas (chlorine). These conditions may void warranty. Model meets all current Federal Regulations for the disabled including those in the Americans with Disabilities Act. Haws manufactures drinking fountains, faucets and electric water coolers to be lead-free by all known definitions including NSF/ANSI/CAN 61- Section 9, NSF/ANSI/CAN 372, California Proposition 65, and the Federal Safe Drinking Water Act. Product is compliant to California Health and Safety Code 116875 (AB 1953-2006), and NSF/ANSI/CAN 61: Q ≤ 1. Haws electric water coolers comply with ARI Standard 1010 and ANSI A117.1, and are listed by Underwriter Laboratories to U.S. and Canadian standards.



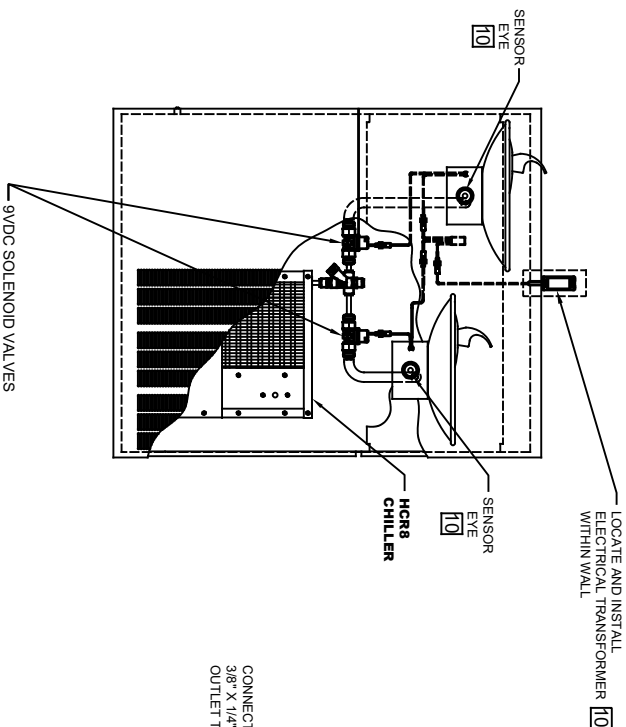
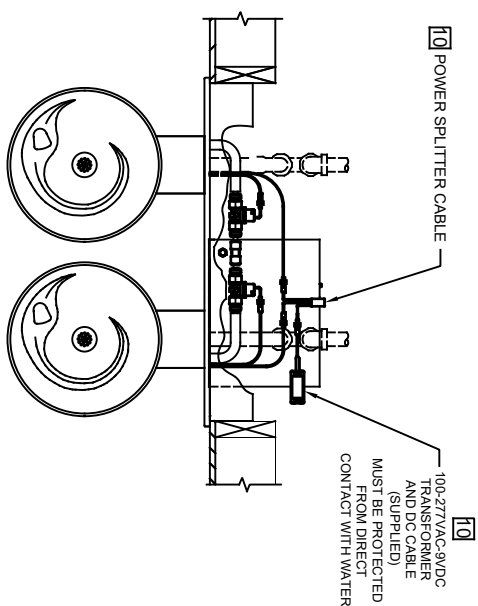
- NOTES:
1. HOLD ROUGH-IN DIMENSIONS ±1/8" (3.2mm).
  2. WHEN INSTALLING THIS UNIT, LOCAL STATE OR FEDERAL CODES SHOULD BE REFERRED TO FOR INSTALLATION DIMENSIONS (LOCATIONS, WASTE AND SUPPLY DIMENSIONS). DIMENSIONS SHOWN IN THIS DRAWING MUST BE ADJUSTED ACCORDINGLY.
  3. ALIGN HOLES IN CHILLER SUPPORT TRAY WITH HOLES IN FRAME AND FASTEN WITH #10 SHEETMETAL SCREWS.
  4. REFER TO MTFGRGLD INSTALLATION DRAWING FOR ROUGH-IN DIMENSIONS, PUSH BUTTON AND VALVE INSTALLATION/MAINTENANCE INSTRUCTIONS.
  5. REFER TO MTFGRGLD INSTALLATION DRAWING FOR ROUGH-IN DIMENSIONS.
  6. INSERT 5/16"-18 PANEL INSERTS FROM OPPOSITE SIDE AT LOCATIONS SHOWN BY PARKENED HOLES. HOLE COMBINATIONS SHOWN ARE FOR USE WITH LOW FOUNTAIN ON THE RIGHT AND HI FOUNTAIN ON THE LEFT. USE OPPOSITE HOLES FOR HI ON RIGHT AND LOW ON LEFT.
  7. HOLE COMBINATION SHOWN BELOW IS FOR USE WITH LOW FOUNTAIN ON THE RIGHT AND HIGH FOUNTAIN ON THE LEFT. USE OPPOSITE HOLES FOR HIGH ON RIGHT AND LOW ON LEFT.
  8. TO CHANGE FOUNTAIN MTG. SCREW LOCATIONS: FIRST REMOVE SCREWS AND THEN SQUEEZE CLIPS ON NUT REMAINDER TO POP OUT. SNAP INTO NEW POSITIONS AND REASSEMBLE SCREWS.
  9. IMPORTANT! A L.H. LOW (OPTIONAL) CONFIGURATION WILL REQUIRE A DIFFERENT BACK PANEL AND THE WASTE AND SUPPLY DIMENSIONS SHOWN (\*) MUST BE REVERSED.
  10. REFER TO PARKHO H & 28RHO H OPERATION AND MAINTENANCE INSTRUCTIONS FOR TRANSFORMER AND SENSOR SETUP.

MODEL H1011.8HO SHOWN  
 MODEL H1011.8HO2 ON SHEET 2  
 (ROUGH-IN DIMENSIONS APPLY TO BOTH MODELS WITH EXCEPTION NOTED ON SHEET 2)

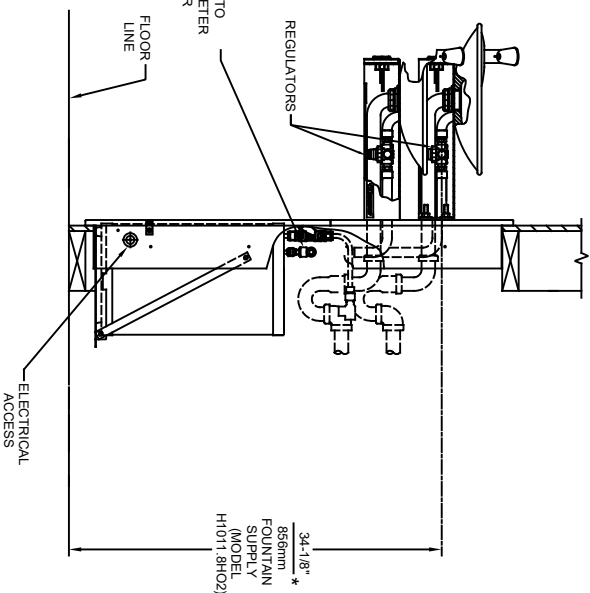
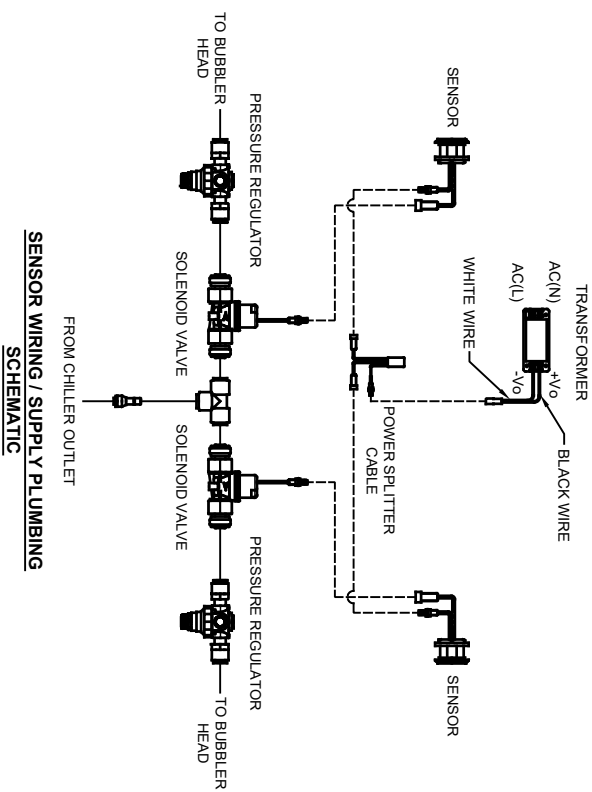
1456 KLEPPE LANE  
 SPARKS, NEVADA 89431  
 (775) 359-4712 FAX (775) 359-7424  
 E-MAIL: HAWS@HAWSCO.COM  
 WEBSITE: WWW.HAWSCO.COM

ECN NO. REVISED PERFBY:	MODEL(S)
ECN 5688 DP	H1011.8HO/H1011.8HO2
DRAWN: RTM	DATE: 07/97
RTM	CHKD: EV
APPROVED: BLM	DATE: 09/3/21
SCALE: NA	DRAWING TYPE: INSTALLATION
SHEET 1 OF 2	REVISION: 28

PART NUMBER 0002080250.D



CONNECT 3/8" PUSH-TO-CONNECT TEE TO 3/8" X 1/4" REDUCER THEN TO 1/4" DIAMETER OUTLET TUBE ON HCR8 WATER CHILLER



MODEL H1011.8HO2 SHOWN  
MODEL H1011.8HO ON SHEET 1  
(SEE SHEET 1 FOR APPLICABLE ROUGH-IN DIMENSIONS)

		<b>MODEL(S)</b>	
1459 KLEPPE LANE SPARKS, NEVADA, 89431 (775) 359-4712 FAX (775) 359-7424 E-MAIL: HAWS@HAWS.CO.COM WEBSITE: WWW.HAWS.CO.COM		H1011.8HO/H1011.8HO2	
ECN NO. REVISED PER BY:	DATE:	DP:	CHKD:
ECN: 5688	07/22/20		
APPROVED:	DATE:	SCALE:	DRAWING TYPE:
BJM	09/13/21	NA	INSTALLATION
PART NUMBER		REVISION	
0002080250.D		28	