



model **SP256**
Emergency Equipment Parts and Accessories

FEATURES & BENEFITS

OPTIONS

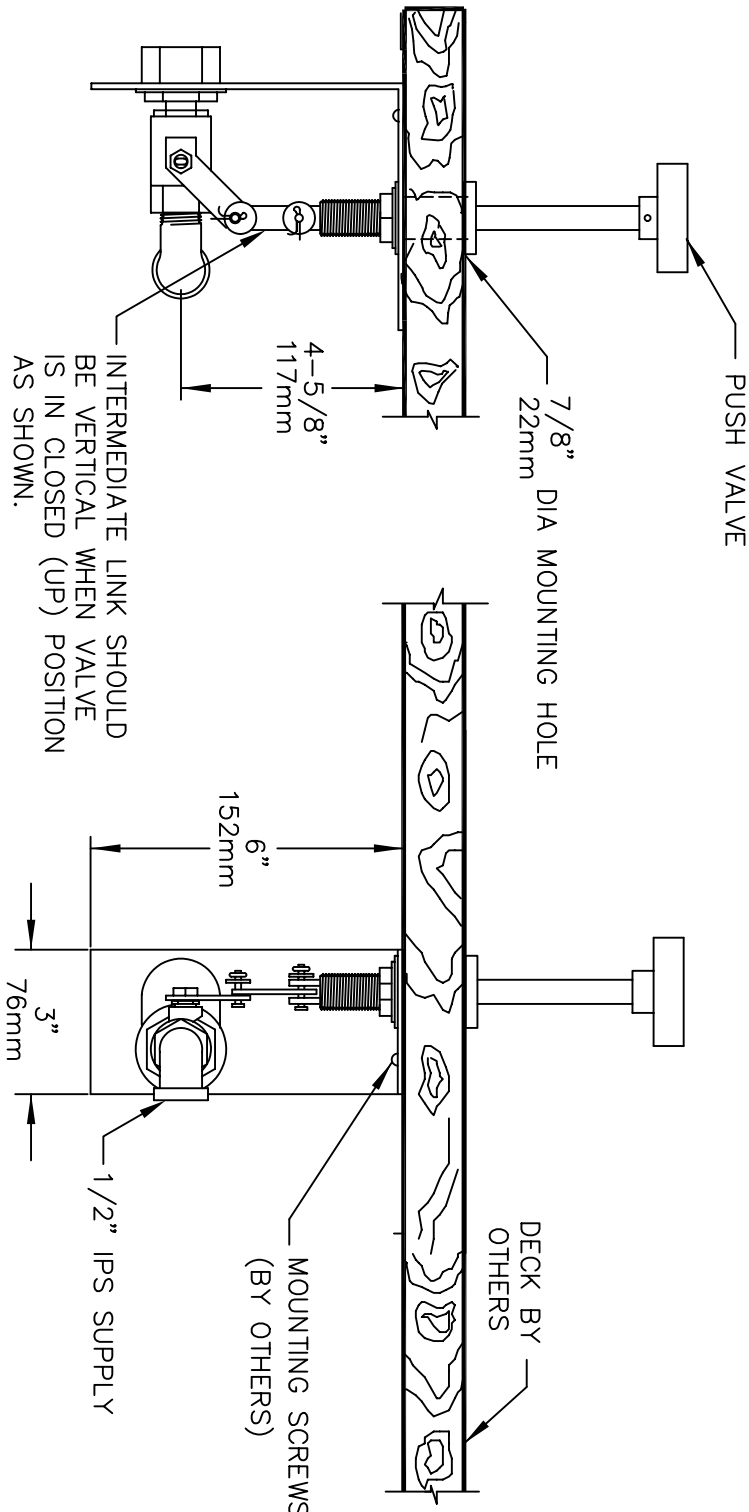
To see all options for this model, visit www.hawSCO.com



SPECIFICATIONS

Model SP256 is a heavy-duty push-down handle with heavy-duty bracket that operates a stay-open chrome-plated brass ball valve that is equipped with a stainless steel stem. 1/2" FIPS.

APPLICATIONS



INTERMEDIATE LINK SHOULD BE VERTICAL WHEN VALVE IS IN CLOSED (UP) POSITION AS SHOWN.

MOUNTING SCREWS (BY OTHERS)

DECK BY OTHERS

HAWES

INFO FAX : 1-888-FAX-HAWS (1-888-329-4297)
 1455 Kieppe Ln, Sparks, NY, 89431
 Phone: 775-338-1124 Fax: 775-338-1424
 Home: 817-338-1124 Fax: 817-338-1424
 Home Mig Pte Ltd 74 Simei Koodil Loop Singapore 729531
 e-mail: Haws@hawsco.com Website: www.hawsco.com

ENGINEERING NO.	DATE	TITLE
12509C00	8/98	MODEL: SP256
PRODUCTION		INFO FAX DOC # 252P256
SCALE: 1:1	DRAWING TYPE	INSTA/DRAW/256B/C
REV. A	REV. 1	OF 1