



# model 5851LFHST

Valve Handle

## FEATURES & BENEFITS

---

## OPTIONS

---

For more information, visit [www.hawesco.com](http://www.hawesco.com) or call (888) 640-4297.



## SPECIFICATIONS

---

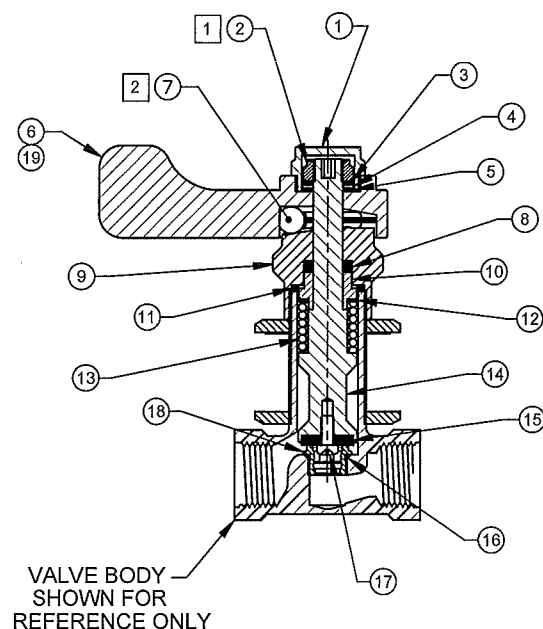
Model 5851LFHST is a handle and stem assembly for the 5851LF valve and shall include a polished chrome-plated brass handle and handle cap, is assembled complete with all supporting parts, and is ready to install on valves 2005 and newer. Haws manufactures drinking fountains, faucets and electric water coolers to be lead-free by all known definitions including NSF/ANSI/CAN 61- Section 9, NSF/ANSI/CAN 372, California Proposition 65, and the Federal Safe Drinking Water Act. Product is compliant to California Health and Safety Code 116875 (AB 1953-2006), and NSF/ANSI/CAN 61: Q ≤ 0.5.

## APPLICATIONS

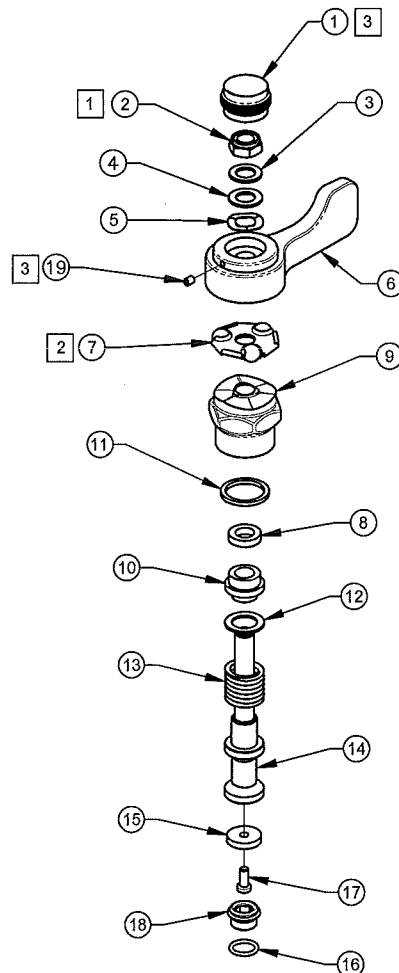
---

# NOTES:

- 1 IF NEEDED, WHEN RE-ASSEMBLING VALVE TIGHTEN DOWN ON (EXISTING)  
3/8"-24 LOCK NUT USING A 9/16" BOX WRENCH AND A 5/16" ALLEN WRENCH  
(TO KEEP VALVE STEM (ITEM 14) FROM TURNING) UNTIL ACHIEVING A SLIGHT  
PLAY ON HANDLE. CAUTION: DO NOT OVER-TIGHTEN NUT. VALVE WILL LEAK.
- 2 LUBRICATE WITH GREASE BEFORE ASSEMBLY.
- 3 SECURE CAP (ITEM 1) WITH SET SCREW (ITEM 19) USING A 1/16" ALLEN WRENCH.

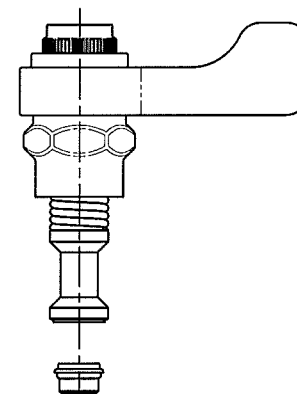


FOR MODEL:  
5851LF



EXPLODED VIEW

BILL OF MATERIAL		
ITEM	PART NO.	DESCRIPTION
19	0005063885	SCREW, SET 6-32 UNC
18	0005208682	SEAT F/5830HST
17	0005064870	SCREW, 8-32 X 3/8"
16	0003981050	O-RING, .426 X .070 WALL
15	0006634576	WASHER, .660 X .170 X .125
14	0005537700	STEM, VALVE
13	0005425392	SPRING, .73 X 1.25 X 2.50mm
12	0006634380	WASHER, .75 X .494 X .040
11	0006621020	WASHER, .923 X .751 X .075
10	0002583484	GLAND
9	0001037809	BONNET, FAUCET
8	0002582902	GLAND PACKING
7	0000192993	BEARING SET
6	0003221210	HANDLE, LEVER F/5054LF
5	0006626653	WASHER, WAVE 5/16"
4	0006633792	WASHER, .650 X .380 X .040
3	0006633596	WASHER, .625 X .390 X .048
2	0003801119	NUT, 3/8-24 UNF NYLON LOCK
1	0001464267	INDEX CAP



ASSEMBLED VIEW

		1455 KLEPPE LANE SPARKS, NEVADA 89431 (775) 359-4712 FAX (775) 359-7424 E-MAIL: HAWS@HAWSO.COM WEBSITE: WWW.HAWSO.COM	
ECN NO. REVISED PER BY:	DATE: / /	MODEL(S)	PART NUMBER
DRAWN: RTM	DATE: 02/22/06	5851LFHST HANDLE/STEM ASSEMBLY	0002080001
APPROVED: CP	DATE: 02/22/06	SCALE: 1:1	DRAWING NO. 15245A00
DRAWING TYPE: INSTALLATION		SIZE: A	SHEET 1 OF 1