

## FEATURES & BENEFITS

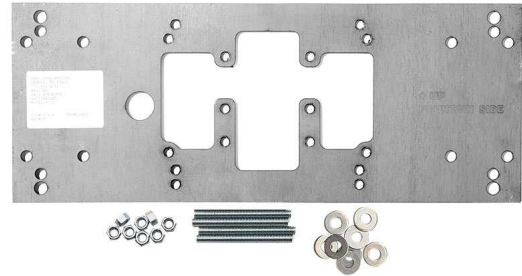
### MOUNTING

Heavy Duty 3/16" (.47 cm) steel pre-drilled and threaded in-wall mounting plate along with all-thread studs and hardware

### OPTIONS

- Support Frame: Model 6800 In-wall floor mounted fixture support legs, welded steel 4-bolt floor flanges, and supplied with 'U' bolts and hardware.

For more information, visit [www.hawsc.com](http://www.hawsc.com) or call (888) 640-4297.

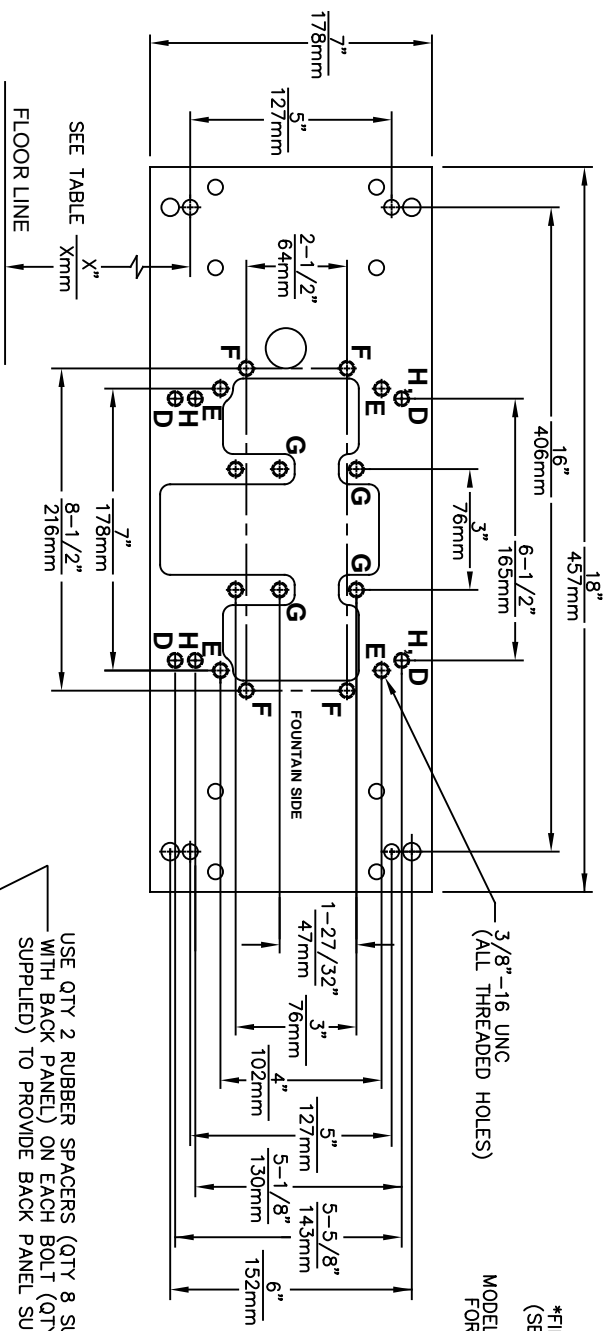


## SPECIFICATIONS

Model 6700 in-wall 3/16" thick steel pre-drilled plate is larger, thicker and stronger than any other plate in the industry, and shall include the all-thread studs, nuts, and washers. For use with many Haws single bubbler fountains.

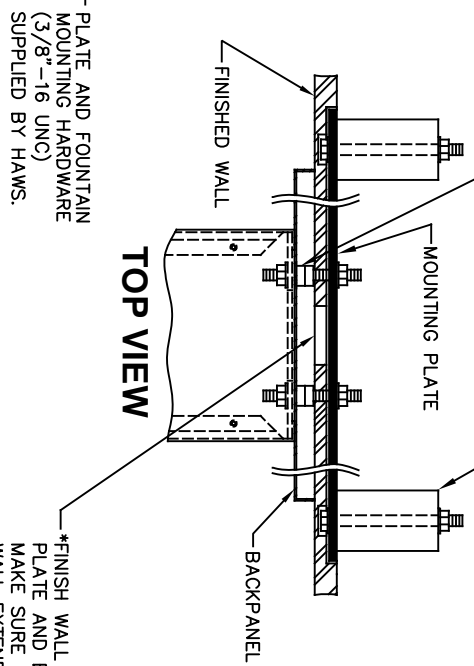
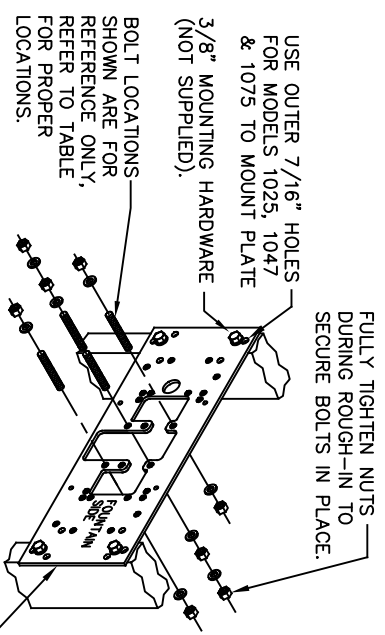
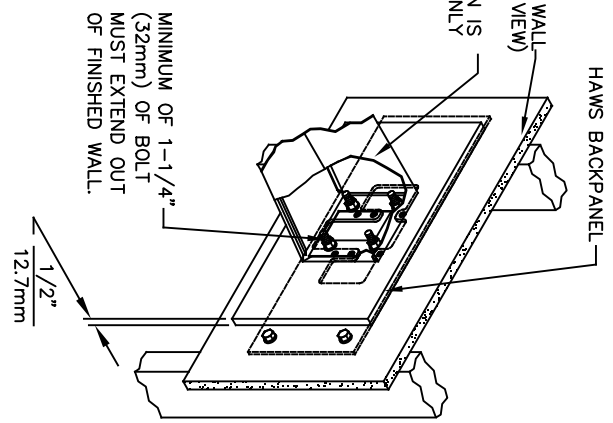
## APPLICATIONS

Haws produces mounting plates and frames to assist in the installation process as well as to provide a solid base for the wall mounted designed fountains. Mounting plates and frames meet the requirements solely for the specified applicable fountains and are not designed to be used in the installation of any unspecified fountain.



USE QTY 2 RUBBER SPACERS (QTY 8 SUPPLIED WITH BACK PANEL) ON EACH BOLT (QTY 4 SUPPLIED) TO PROVIDE BACK PANEL SUPPORT.

\*FINISHED WALL (SEE TOP VIEW) MODEL SHOWN IS FOR REF ONLY



**CAUTION**

REGARDING CONCRETE/MASONRY WALL MOUNTING: DO NOT SECURE MOUNTING PLATE TO SAME SIDE OF WALL AS FOUNTAIN. AVOID COMPROMISING INTEGRITY OF WALL WHEN ANCHORING FOUNTAIN. IT IS RECOMMENDED THAT INSTALLER CALL TECHNICAL SUPPORT IF THERE ARE ANY QUESTIONS AS TO HOW TO OBTAIN A PROPER ANCHOR IN CONCRETE/MASONRY WALLS. 1-800-766-5612

MODEL	MTG HOLES	"X" DIM
1000	"G"	25-3/8" [645mm]
1001	"G"	25-3/8" [645mm]
1025	"D"	28-1/8" [714mm]
1047	"E"	27-1/2" [699mm]
1075	"E"	28" [711mm]
1109	"H"	34-5/16" [872mm]
1105	"H"	27-5/16" [694mm]
1116	"G"	25-3/8" [645mm]
1001FR	"G"	25-3/8" [645mm]
1109FR	"H"	27-5/16" [694mm]
1075FR	"E"	28" [711mm]
1311	"E"	26-3/4" [679mm]
1107L	"E"	26-3/16" [665mm]
1311TRIMCA	"E"	26-3/4" [679mm]

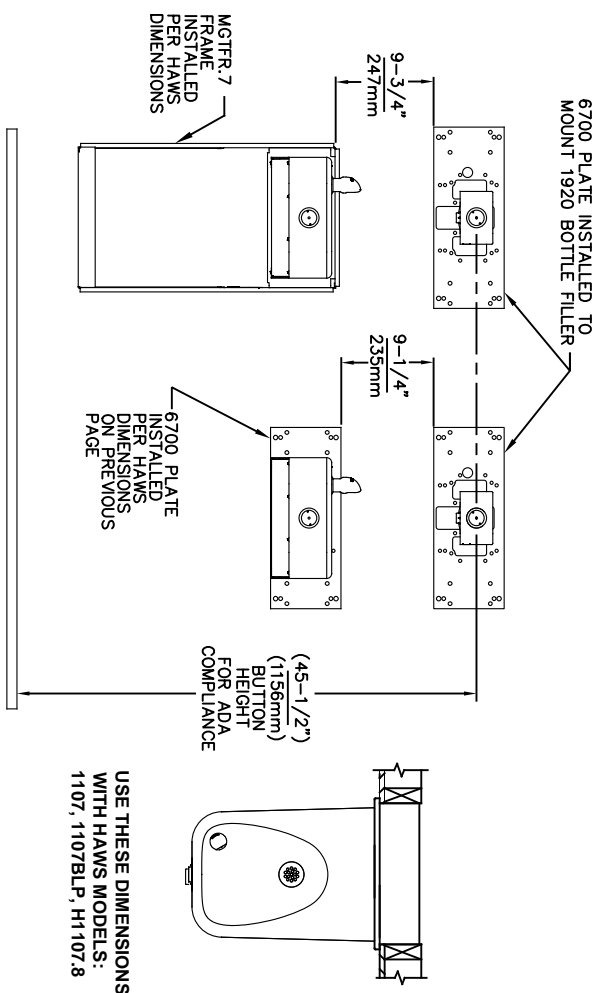
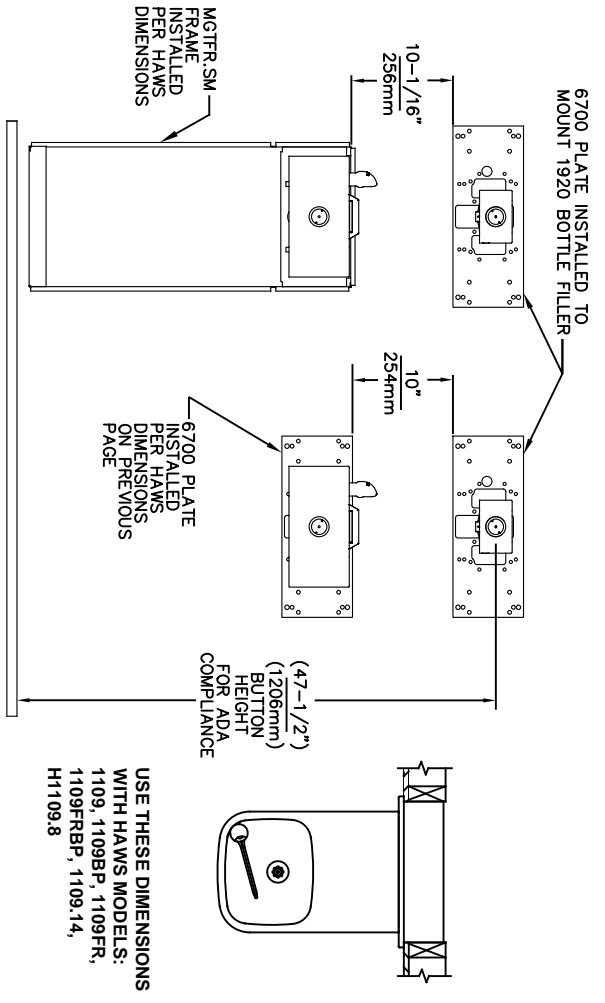
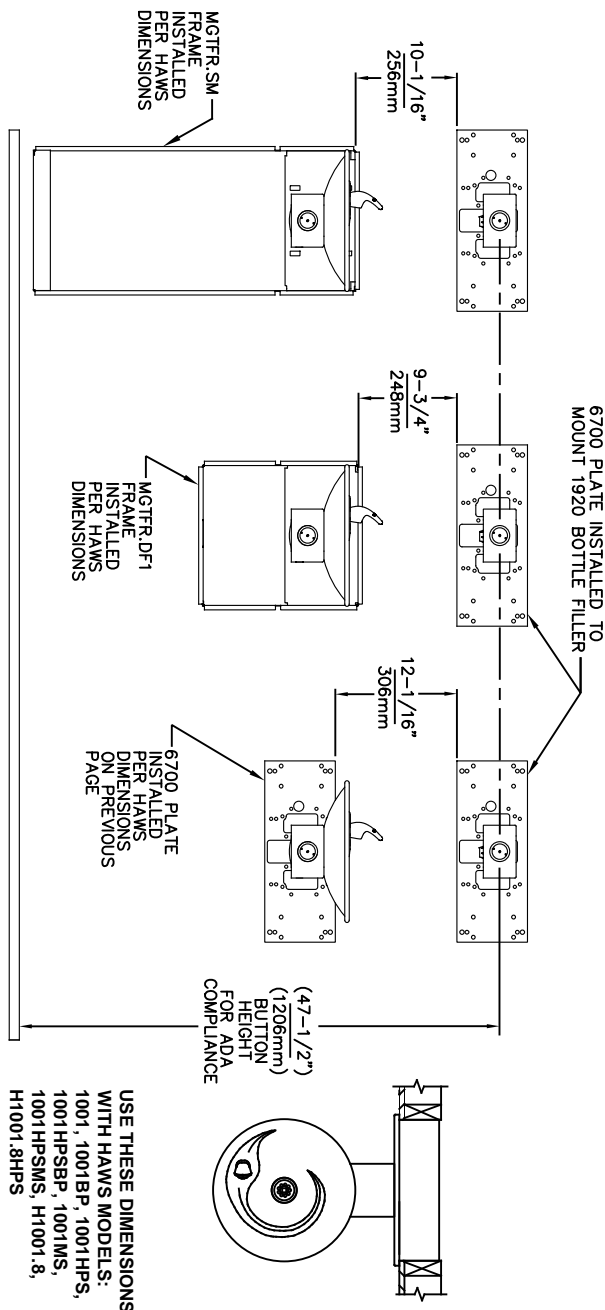
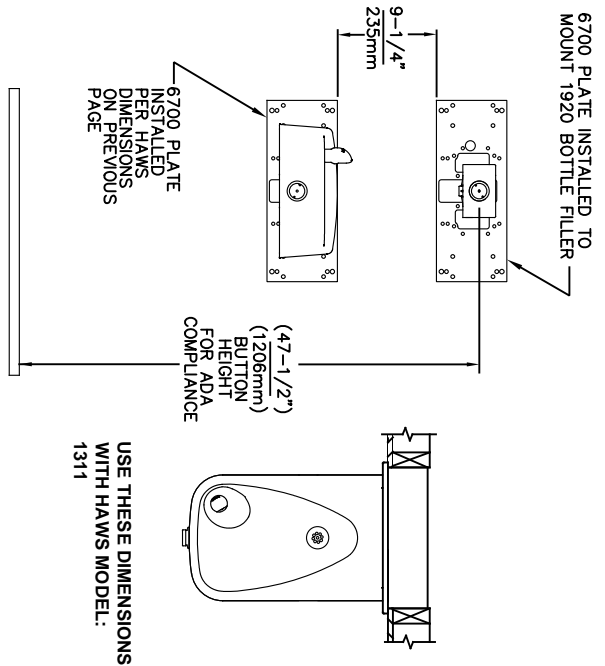
\*FINISH WALL OVER MOUNTING PLATE AND BEHIND BACKPANEL. MAKE SURE THAT FINISHED WALL EXTENDS WITHIN THE BRACKET/BOWL MOUNTING HOLES (TO PROVIDE SURFACE AREA FOR RUBBER SPACERS TO CONTACT).

1455 KLEPPE LANE  
SPARKS, NEVADA, 89431  
(775) 359-4712 FAX (775) 359-7424  
E-MAIL: HAWKS@HAWSCO.COM  
WEBSITE: WWW.HAWSCO.COM

ECN NO. REVISED PER BY: MODEL(S)  
DRAWN: C.L. DATE: 09/03/03 CHK'D: DP  
APPROVED: F.V. DATE: 04/13/20 SCALE: N/A DRAWING TYPE: INSTALLATION SIZE: A SHEET: 1 OF 2

6700

PART NUMBER: 0002080016  
REVISION: 21



NOTES:  
WHEN INSTALLING THIS UNIT, LOCAL, STATE OR FEDERAL CODES SHOULD BE ADHERED TO.

1455 KLEPPE LANE  
SPARKS, NEVADA, 89431  
(775) 359-4712 FAX (775) 359-7424  
E-MAIL: HAWS@HAWS.CO.COM  
WEBSITE: WWW.HAWS.CO.COM

ECON. NO.	REVISED PER BY:	MODEL(S)	
6700	FV		
DATE:	CHKD:		
02/09/17	DP		
APPROVED:	DATE:	SCALE:	DRAWING TYPE:
FV	04/13/20	N/A	INSTALLATION
			SIZE: A SHEET: 2 OF 2
			REVISION: 21

PART NUMBER: 0002080016