

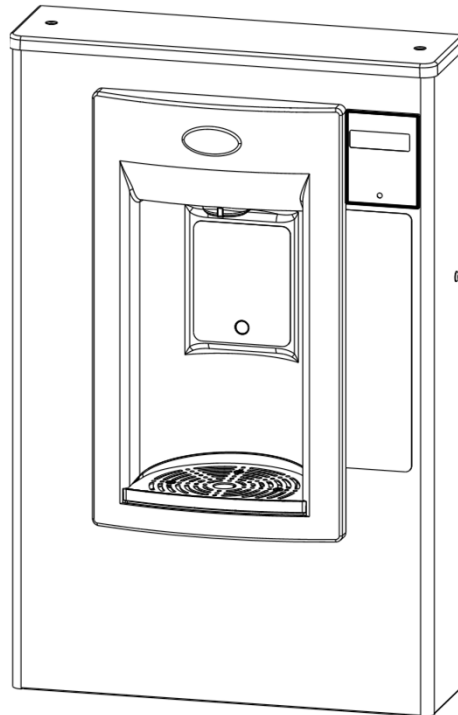
# OASIS® Water Coolers

## VERSAFILLER® Model PWSMEBF Installation Instructions

The Hands-Free VersaFiller is an extension of the Aqua Pointe® product line.

The VersaFiller is shipped partially assembled.

**When completed, the finished assembly will look like this:**



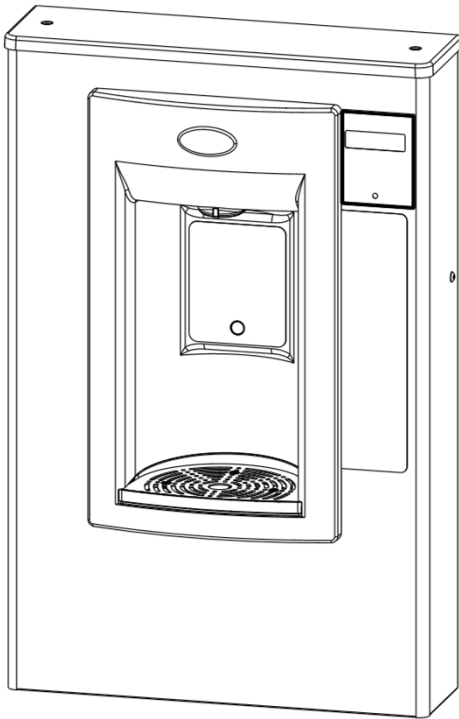
### WARNING

•THE WARRANTY FOR THIS MACHINE IS AUTOMATICALLY VOIDED IF THIS MACHINE IS ALTERED, MODIFIED, OR COMBINED WITH ANY OTHER MACHINE OR DEVICE. ALTERATION OR MODIFICATION OF THIS MACHINE MAY CAUSE SERIOUS FLOODING.

•EXCEPT AS SET FORTH HEREIN, THE MANUFACTURER MAKES NO OTHER WARRANTY, GUARANTEE OR AGREEMENT EXPRESS, IMPLIED OR STATUTORY, INCLUDING ANY IMPLIED WARRANTY OR METCHANTABILITY OR FITNESS FOR A PARTICULAR PURPOSE.

## Section 1: Getting Started

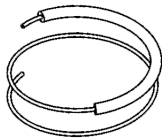
### What's Included:



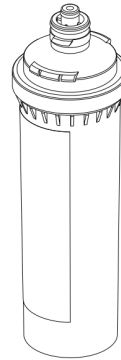
Fitting., reducing union

4" straight tube

Inline strainer



38" of ¼ OD plastic tubing with 19" of sponge tubing insulation



Versafilter II

Versafilter II is optional

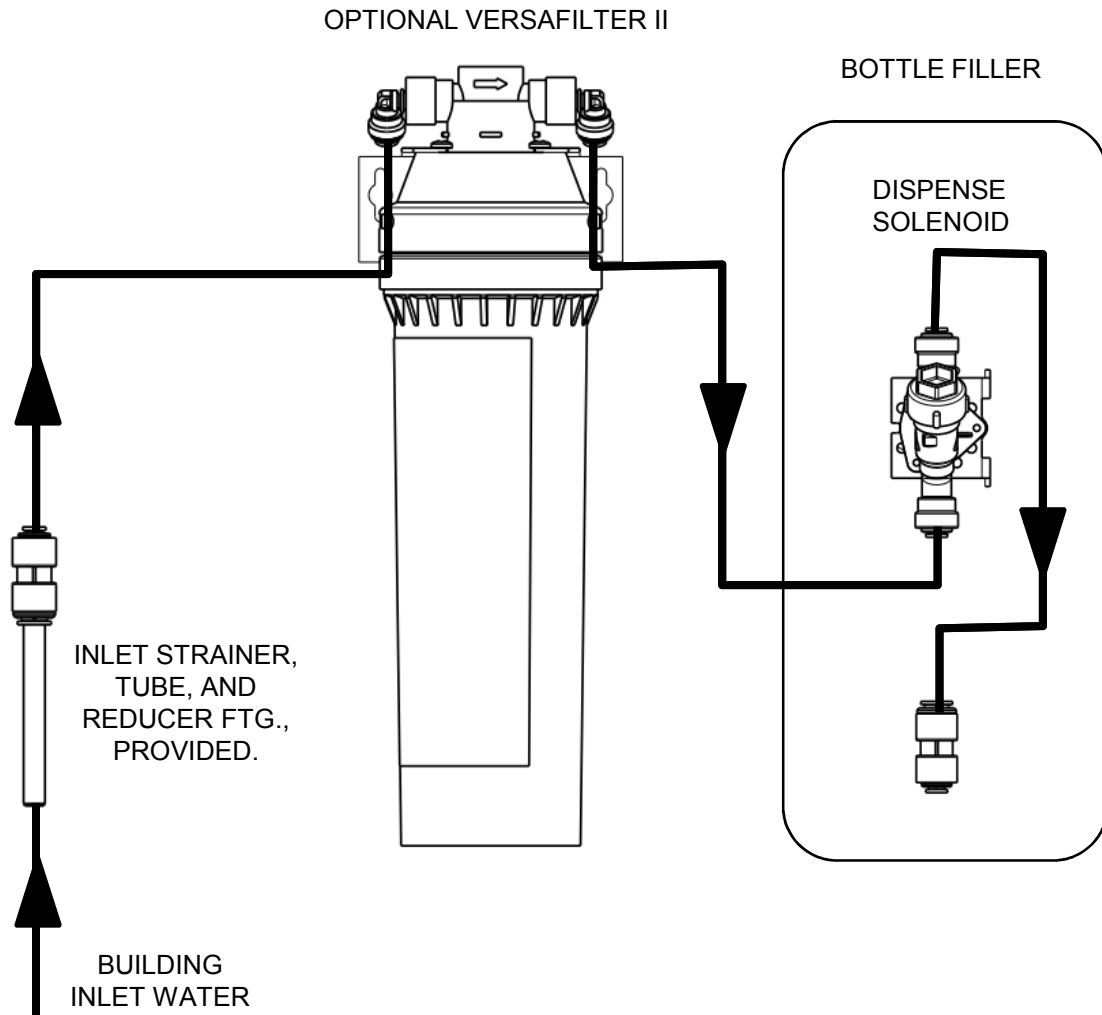
### Tools required:

- # 2 Phillips screw driver
- #15 torx bit driver



# Section 3: Plumbing Diagram

## Plumbing Diagram



## Section 4: Installation

### A. INSPECTION

Inspect the cartons and various components for evidence of rough handling and concealed damage. Damage claims should be filed with the carrier.

### B. INSTALLATION & ELECTRICAL / PLUMBING CONNECTIONS

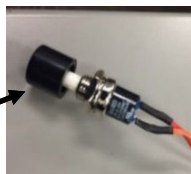
1. **Note:** The following states require a licensed plumber to install cooler; AR, GA, MA, MI, OK, RI, SC, SD, TX, VT and WI.
2. CA, KS, MN, NM, and OR allow for state-registered installer or contractor as well. State and local plumbing codes may prohibit use of saddle tapping valves for water line connection in some applications. All connections must conform to applicable plumbing codes.
3. Plumbing and electrical (if required) rough-in and wall opening should be prepared as shown on Roughing-in drawing and template. This drinking water cooler is designed to be operated at a water supply line pressure of up to 100 psi (690 kPa). A pressure regulator must be installed in front of the unit's water inlet if the water pressure (including any possible pressure spikes) could exceed 100 psi (690 kPa).
4. Check the available power supply against the dispenser data plate to assure the correct electrical service. This drinking water dispenser is intended to be connected to a ground fault circuit interrupting (GFCI) device to meet UL requirements.
5. Prep the unit for installation by removing the internal wall frame from cabinet. Remove 2 torx screws (T15) from the sides. Save the screws for reassembly later.
6. Place the wall frame in the appropriate location and attach to the wall. The back panel has 4 rows of slots to provide optimum securing location. NOTE: As the frame is put in place, slide the drain tube into the drain stub extending from the wall.
7. As you put the bottle filler in place on the frame, attach the green grounding wire from the cabinet to the electrical box ground. Connect the water supply line, and plug in the power cord for sensor operation.
8. Connect the water supply line and check plumbing connections for leaks.
9. The display on the upper right of the cabinet should be illuminated. Follow the set up guide for bottle filler electronics in Section 5 to adjust the program settings. Water will shut off immediately after a container is removed from alcove. Maximum run time is 30 seconds should someone tamper with sensor. Fasten the cabinet to the frame using the 2 torx screws removed earlier.
10. On new plumbing installations, run water through the spout until the water taste is satisfactory. Place a cup or bottle into the alcove to activate the sensor and open the solenoid valve. The sensor will automatically shut off the solenoid valve after the programmed run time is reached. To reactivate, move the container away for an instant and then again place it in front of sensor.
11. Assemble the top back on cabinet using the 2 torx screws.

## Section 5: Set-up guide for bottle filler electronics

### Factory default program settings are:

- Units - Gallons
- Unfiltered unit
- Flow Meter = Rate Selected
- Filter Capacity = 1250 gallons [4731 liters] for a VersaFilter
- Bottle Count = 0.5L (1 Bottle)
- Flow Rate = 1.2 GPM
- 20 second maximum dispense time

Pushbutton

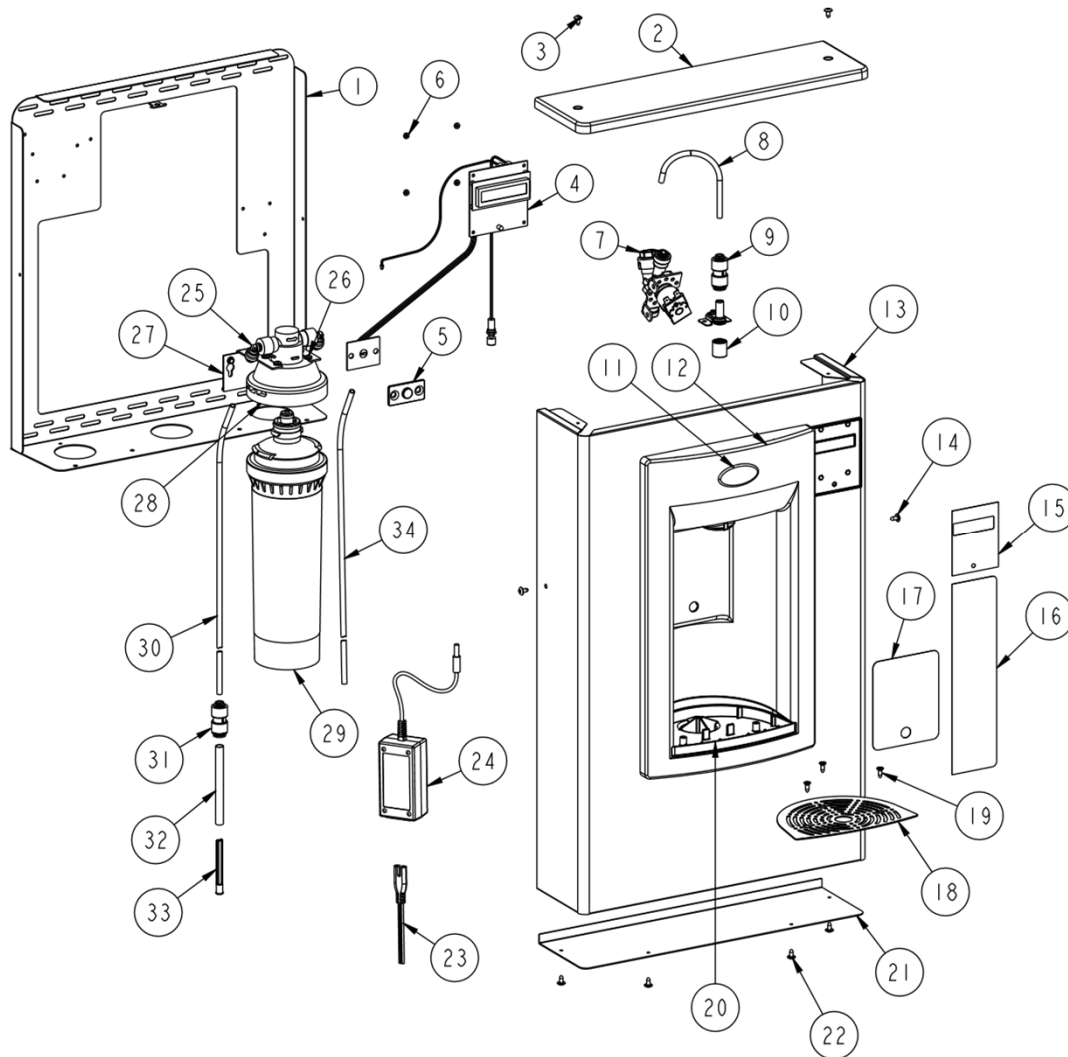


•To access the bottle filler electronics, the bottle filler top cap will need to be removed until programming is complete. Remove the top cap by unscrewing the two (2) T15 torx screws. Remove the pushbutton located inside the bottle filler .You can then adjust the program using the pushbutton.

### To change the program settings, follow these steps:

| <i>Display</i>                              | <i>Action</i>  |
|---|--|
| 00000000<br>BOTTLES REUSED<br>(Home Screen) | Depress button for 3 seconds to enter into the following menu settings and make changes.<br>Note: at anytime it will exit menu and save settings when idle for 10 seconds (no button press) and revert back to Home Screen.                    |
| LTR/GAL<br>GAL                              | Depress button 3 seconds to change from Gallons to Liters,<br>or momentary press to advance to next menu.  |
| UNFILT/FILT?<br>UNFILT UNIT                 | Depress button 3 seconds to change from Unfiltered to Filtered unit,<br>or momentary press to advance to next menu.  |
| FLOW METER?<br>RATE SELECTED                | Depress button 3 seconds to change from Rate Selected to (Flow) Meter Enabled,<br>or momentary press to advance to next menu. Not included on all models.  |
| SELECT RATE<br>1.2 GPM UNIT                 | To change flow rate, momentarily depress button to change whole gallon digit.<br>Hold button 3 seconds to advance to TENTHS of gallon digit.<br>Depress momentarily to change the digit.<br>Hold button 3 seconds to advance to the next menu. |
| RESET 00000000<br>GALLON CNT<br>[LTR COUNT] | Depress button for 3 seconds to reset Gallon or Liter count,<br>or momentary press to advance to next menu.  |
| FILT CAPAC<br>OF 1250 GAL<br>[4731 LTR]     | Depress button for 3 seconds to change filter capacity to 3000 GAL [11355 liters] for<br>Versafilter II or Galaxi green filter,<br>or momentary press to advance to next menu.   |
| 3 sec rule?<br>0.5L                         | Depress button for 3 seconds to switch from 0.5L bottle to 3 sec rule,<br>or momentary press to advance to next menu.<br>(The 3 Sec rule increases the bottle count based on a 3 second dispense.)   |
| Reset 00000000<br>BOT COUNT?                | Depress button for 3 seconds to reset (Home Screen) BOTTLES REUSED count,<br>or momentary press to advance to next menu.   |
| Bot Filler<br>Set_time: 20 s                | Depress button for 3 seconds to change maximum dispense time to 10, 20 or 30 seconds,<br>or momentary press to advance to next menu.   |
| RUN CAL<br>AGAIN?                           | Depress button 3 seconds to run calibration again,<br>or momentary press to advance to next menu.  |

## Section 6: Parts Breakdown



| ITEM | QTY | P/N        | Description                  |
|------|-----|------------|------------------------------|
| 1    | 1   | 036687-003 | FRAME, PWFSBF-K12            |
| 2    | 1   | 036686-001 | CAP, PWFSBF                  |
| 3    | 2   | 031875-003 | SCREW, TRUSS HD TAPPING TORX |
| 4    | 1   | 038026-002 | ELECTRONICS ASSY, IR/LCD     |
| 5    | 1   | 038027-001 | LENS, IR BOTTLE FILLER       |
| 6    | 4   | 026824-026 | NUT, HEX NYLON               |
| 7    | 1   | 038030-002 | SOLENOID VALVE 12VDC         |
| 8    | 1   | 030152-009 | TUBE, PE WHITE 7.5"          |
| 9    | 1   | 028668-101 | FTG, PP REDUCING UNION       |
| 10   | 1   | 038032-001 | FLOW NOZZLE                  |
| 11   | 1   | 031434-014 | NAMEPLATE, OASIS             |
| 12   | 1   | 036190-003 | ALCOVE, EBF                  |
| 13   | 1   | 038003-005 | WRAPPER, PWSMEBF             |
| 14   | 2   | 031875-003 | SCREW, TRUSS HD TAPPING TORX |
| 15   | 1   | 038031-005 | LABEL, LCD BEZEL             |
| 16   | 1   | 038031-007 | LABEL, PANEL EBF             |
| 17   | 1   | 038031-006 | LABEL, ALCOVE SENSOR         |

| ITEM | QTY | P/N        | Description                      |
|------|-----|------------|----------------------------------|
| 18   | 1   | 036192-001 | GRILLE, BOTTLE FILLER DRAIN      |
| 19   | 3   | 026675-003 | SCREW, FLAT HD TAPPING           |
| 20   | 1   | 036191-001 | DRAIN, MSBF                      |
| 21   | 1   | 038004-001 | PLATE, WRAPPER BOTTOM            |
| 22   | 4   | 031875-003 | SCREW, TRUSS HD TAPPING TORX     |
| 23   | 1   | 038168-001 | CORD ASSY, DC POWER SUPPLY       |
| 24   | 1   | 038036-003 | POWER SUPPLY,100-240VAC/12VDC    |
| 25   | 1   | 029994-103 | FTG, PP ELBOW, PLUG IN           |
| 26   | 4   | 026630-022 | SCREW, PAN HD TAPPING            |
| 27   | 1   | 041073-001 | BRKT, VERSAFILTER II             |
| 28   | 1   | 041072-001 | FILTER HEAD, VERSAFILTER II      |
| 29   | 1   | 041071-001 | FILTER CARTRIDGE, VERSAFILTER II |
| 30   | 1   | 030152-046 | TUBE, PE CUT LENGTH WHI 38.0"    |
| 31   | 1   | 028668-101 | FTG, PP REDUCING UNION           |
| 32   | 1   | 026794-014 | TUBE, STRAIGHT (4")              |
| 33   | 1   | 033264-003 | STRAINER, IN-LINE                |
| 34   | 1   | 030152-157 | TUBE, PE CUT LENGTH WHI 21.0"    |



OASIS INTERNATIONAL

222 East Campus View Blvd. • Columbus, OH 43235 U.S.A.

1-800-950-3226

[www.oasiscoolers.com](http://www.oasiscoolers.com)

OASIS, Versafiller, Aqua Pointe and Versafilter are registered trademark of LVD Acquisition, LLC dba Oasis International

© 2020 LVD Acquisition  
030099-612 4/2020