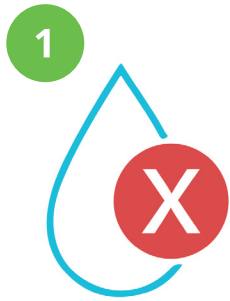


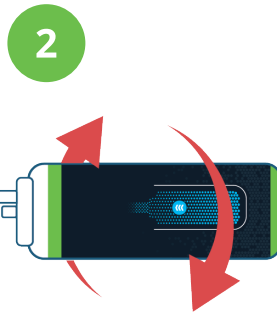
ELKAY PRO FILTRATION™ FILTER INSTALLATION INSTRUCTIONS

Applies to FLP4, FL6, FL10 and FSR5

PLEASE NOTE: For use on cold water line only. Do not allow installed filter to freeze.



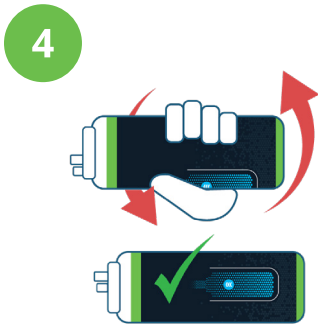
Turn off water supply; dispense water to relieve pressure; turn off unit power.



Turn used filter(s) 1/4 rotation to remove from filter head.



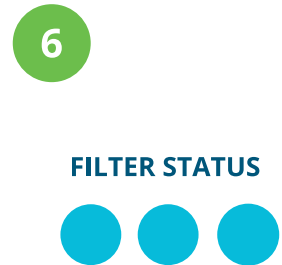
Remove cap from new filter and use to seal used filter.



Hold filter as shown above. Firmly insert into filter head. Turn filter 1/4 rotation until it locks into place and the front label is clearly visible. Repeat for second filter if equipped.



Turn on unit power. The display will show a countdown to the start of the filter flush. Turn on the water supply.



After the automatic filter flush is completed, the three filter status LEDs will reset to blue.

Limited Warranty

This product is warranted to be free from defects in material and workmanship for a period of one year from the date of installation. Warranty is limited to repair or replacement of defective component.

⚠ WARNING: Cancer and Reproductive Harm – www.P65Warnings.ca.gov

⚠ ADVERTENCIA: Cáncer y daño reproductivo – www.P65Warnings.ca.gov

⚠ AVERTISSEMENT: Cancer et effets néfastes sur la reproduction – www.P65Warnings.ca.gov