

ELKAY®

INSTALLATION and USE MANUAL

VR Series Fountain and Mechanical Bottle Filler



Patent zurn-elkay.com/patents

⚠ **WARNING:** Cancer and Reproductive Harm - www.P65Warnings.ca.gov

⚠ **ADVERTENCIA:** Cáncer y daño reproductivo - www.P65Warnings.ca.gov

⚠ **AVERTISSEMENT:** Cancer et effets néfastes sur la reproduction - www.P65Warnings.ca.gov

TOOLS REQUIRED**BUT NOT PROVIDED:**

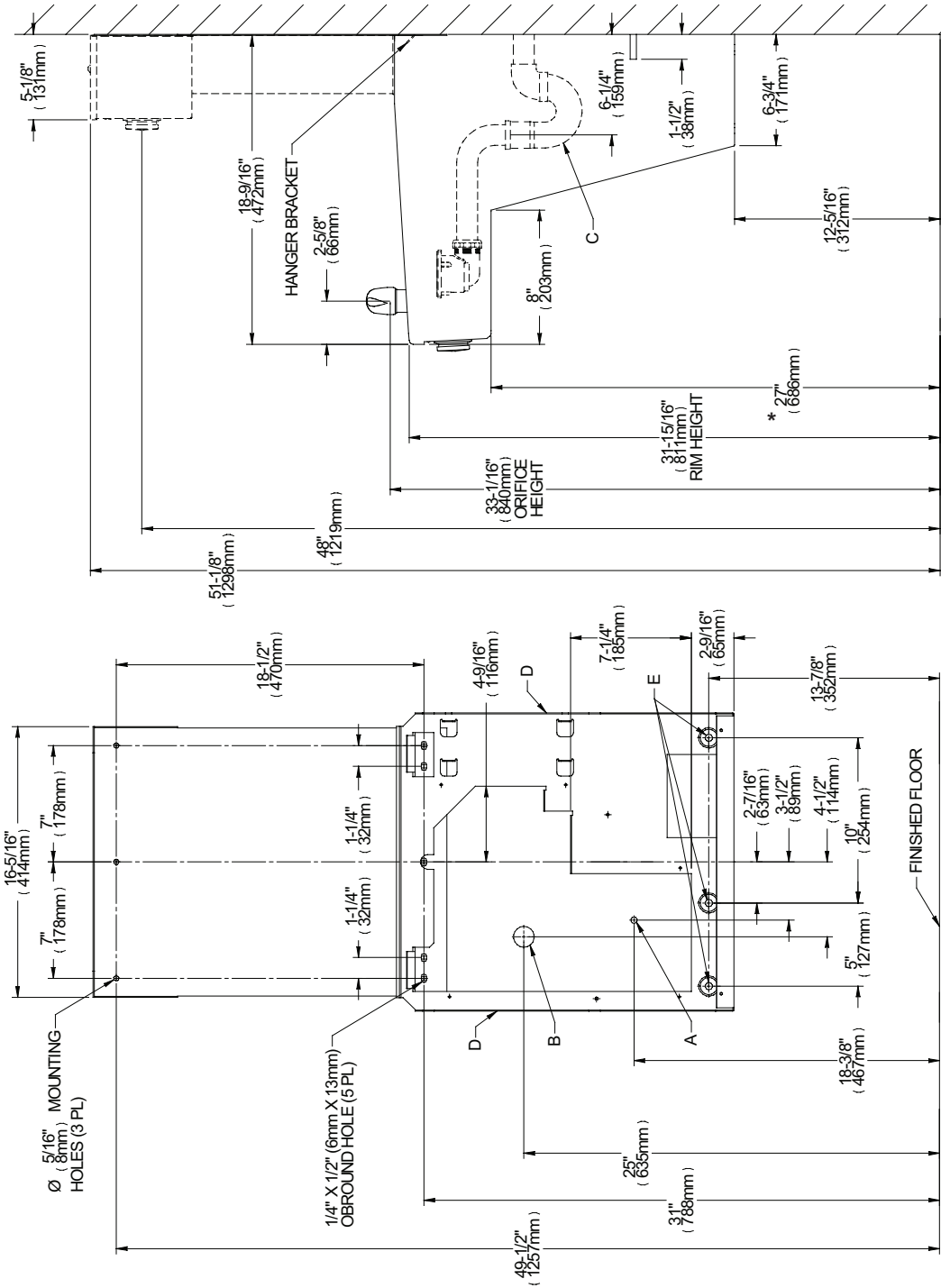
SAFETY GLASSES
GLOVES
ELECTRIC DRILL
3/4" WRENCH OR CRECENT WRENCH
UTILITY KNIFE
TAPE MEASURE
PENCIL
CENTER PUNCH
1/2" SOCKET & RATCHET WRENCH
5/32" ALLEN WRENCH

IMPORTANT! INSTALLER PLEASE NOTE.

THE GROUNDING OF ELECTRICAL EQUIPMENT SUCH AS TELEPHONE, COMPUTERS, ETC. TO WATER LINES IS A COMMON PROCEDURE. THIS GROUNDING MAY BE IN THE BUILDING OR MAY OCCUR AWAY FROM THE BUILDING. THIS GROUNDING CAN CAUSE ELECTRICAL FEEDBACK INTO A FOUNTAIN, CREATING AN ELECTROLYSIS WHICH CAUSES A METALLIC TASTE OR AN INCREASE IN THE METAL CONTENT OF THE WATER. THIS CONDITION IS AVOIDABLE BY USING THE PROPER MATERIALS AS INDICATED. ANY DRAIN FITTINGS PROVIDED BY THE INSTALLER SHOULD BE MADE OF PLASTIC TO ELECTRICALLY ISOLATE THE FOUNTAIN FROM THE BUILDING PLUMBING SYSTEM.

LVRC(TL)DMWSK & VRC(TL)DMWSK Bottle Fillers are among the easiest to install on the market today. To insure you install these models easily and correctly, PLEASE READ THESE SIMPLE INSTRUCTIONS BEFORE STARTING THE INSTALLATION. CHECK YOUR INSTALLATION FOR COMPLIANCE WITH PLUMBING, AND OTHER APPLICABLE CODES. After installation, leave these instructions with the Fountain for future reference.

LVRCDMWS / VRCDMWS



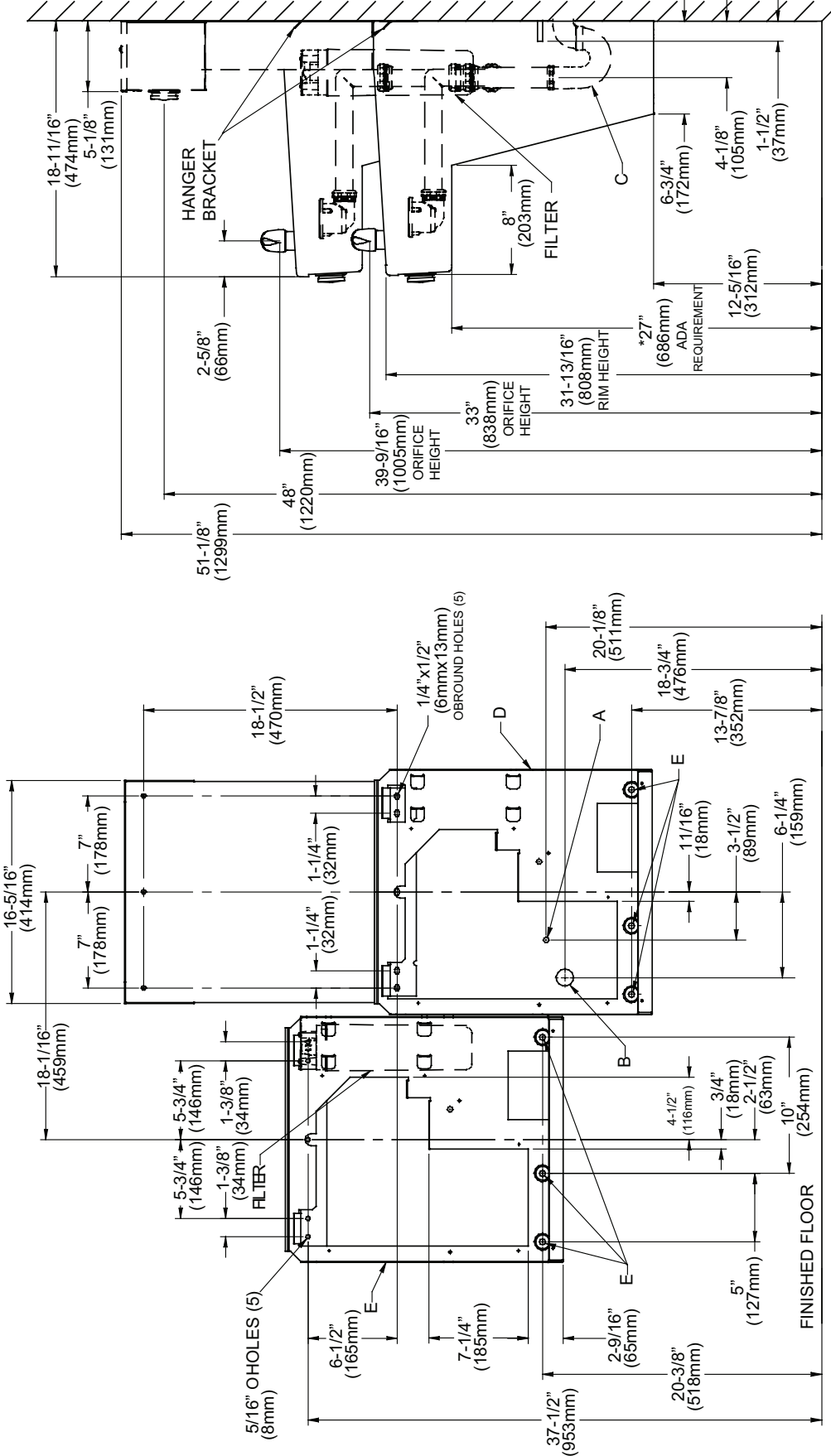
Single Rough-In Fig. 1

* REDUCE HEIGHT BY 3" FOR INSTALLATION OF CHILDREN'S ADA FOUNTAIN

LEGEND:

- A = RECOMMENDED WATER SUPPLY LOCATION 3/8" O.D. UNPLATED COPPER TUBE CONNECT STUB 1-1/2" (38mm) OUT FROM WALL. SHUT OFF VALVE NOT FURNISHED.
- B = RECOMMENDED LOCATION FOR WASTE OUTLET 1-1/4" O.D. DRAIN.
- C = 1-1/4" TRAP NOT FURNISHED.
- D = INSURE PROPER VENTILATION BY MAINTAINING 6" (152mm) MIN. CLEARANCE FROM CABINET LOUVER TO WALL.
- E = 7/16" BOLT HOLES FOR FASTENING UNITS TO WALL.

(L)VRCTLD



* ADA REQUIREMENT
 * REQUISITO DE A.D.A.
 * EXIGENCIA ADA

* REDUCE HEIGHT BY 3" FOR INSTALLATION OF CHILDREN'S ADA COOLER

- LEGEND**
- A = RECOMMENDED WATER SUPPLY LOCATION 3/8 O.D. UNPLATED COPPER TUBE CONNECT STUB WITH SHUT OFF (BY OTHERS) 3 IN. (76mm) MAXIMUM OUT FROM WALL
 - B = RECOMMENDED LOCATION FOR WASTE OUTLET 1-1/2" O.D. DRAIN STUB 2 IN. OUT FROM WALL
 - C = 1-1/2 TRAP NOT FURNISHED
 - D = INSURE PROPER VENTILATION BY MAINTAINING 6" (152 mm) (MIN.) CLEARANCE FROM CABINET LOUVERS TO WALL.
 - E = 7/16 BOLT HOLES FOR FASTENING UNIT TO WALL

Fig. 2

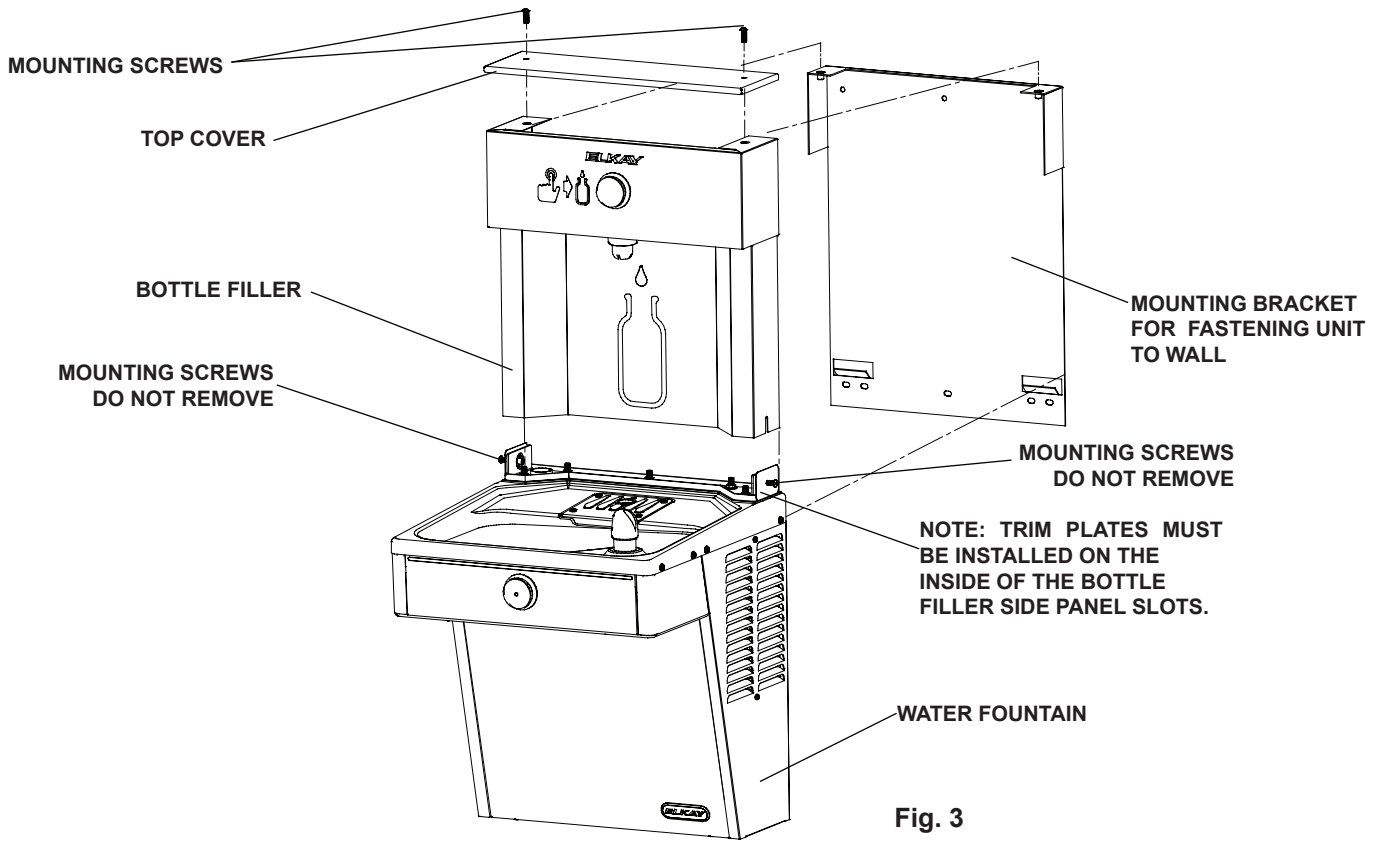


Fig. 3

BOTTLE FILLER INSTALLATION

- 1) **Remove wall mounting plate from Fountain.** Install Wall Mounting Plate as per rough-in diagram on page 3.
NOTE: Mounting plate **MUST** be supported securely. Add fixture support carrier if wall will not provide adequate support.
- 2) **Install water fountain onto wall bracket** and secure to wall. Connect drain and water inlet to fountain as required (See rough-in on page 3).
- 3) **Remove VRC Bottle Filler** from carton. Lay Bottle Filler on water fountain basin and cut insulation from tube even with bottom of unit, remove this insulation from the 3/8" tube, but do not discard. Feed the waterline through the hole on top of water fountain.
NOTE: To prevent scratching the basin place a towel or soft cloth over the entire basin when working above it.
- 4) **With the waterline** through the hole on top of water fountain place Bottle Filler on to mounting bracket on basin. (See Fig. 2). Make sure Bottle Filler is installed properly on the basin gasket.
- 5) **Once Bottle Filler** is installed on basin mounting bracket, tighten the two screws (supplied) one on each side of the bottle Filler. Install Top Cover on Bottle Filler (See Fig. 2) with two mounting screws (supplied). Caution do not over tighten screws.
- 6) **Install remaining tube insulation to the waterline** from bottle Filler. Connect Bottle Filler waterline inside of the water fountain by connecting the 3/8" water line to the tee at the water outlet.
- 7) For TL Models Once Bottle Filler is installed on basin mounting bracket, tighten the two screws (supplied) one on each side of the bottle filler. Install Top Cover on Bottle Filler (See Fig.2) with two mounting screws (supplied). Caution do not over tighten screws.
- 8) Secure left-hand fountain to wall, connect drains and water inlet.
- 9) Install the 1/4" poly tubing and insulation from the outlet of the filter to an opening on one of the tees. Install the 1/4" poly tubing and insulation from the regulator in the left hand fountain to one of the tees. Install remaining tube insulation to the water line from bottle filler, connect Bottle Filler waterline inside of the water fountain by connecting the 3/8" water line to the tee
- 10) For Model LVRCxx Install filter cartridge, remove filter from carton, remove protective cap, attach filter to filter head by firmly inserting into head and rotating filter clockwise.
- 11) **NOTE:** If existing plumbing rough-in locations (Drain, Water In, do not allow the filter to be mounted inside the fountain cabinet the filter can be installed horizontally below the unit. A retrofit kit is available to mount the filter beneath the cooler.
- 12) **Turn water supply on** and inspect for leaks. Fix all leaks before continuing.
- 13) **Verify proper dispensing** by depressing the button at the top of the Bottle Filler and verify water dispenses. Note: the first initial dispenses might have air in line which may cause a sputter. This will be eliminated once all air is purged from the line.
- 14) **Once unit tests out,** install Lower Panel back on (L)VRC water fountain. Unit is now ready for use.

OPERATION OF QUICK CONNECT FITTINGS

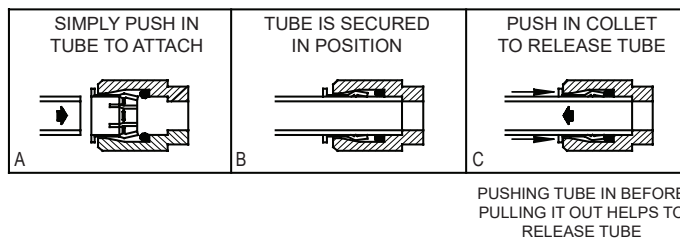
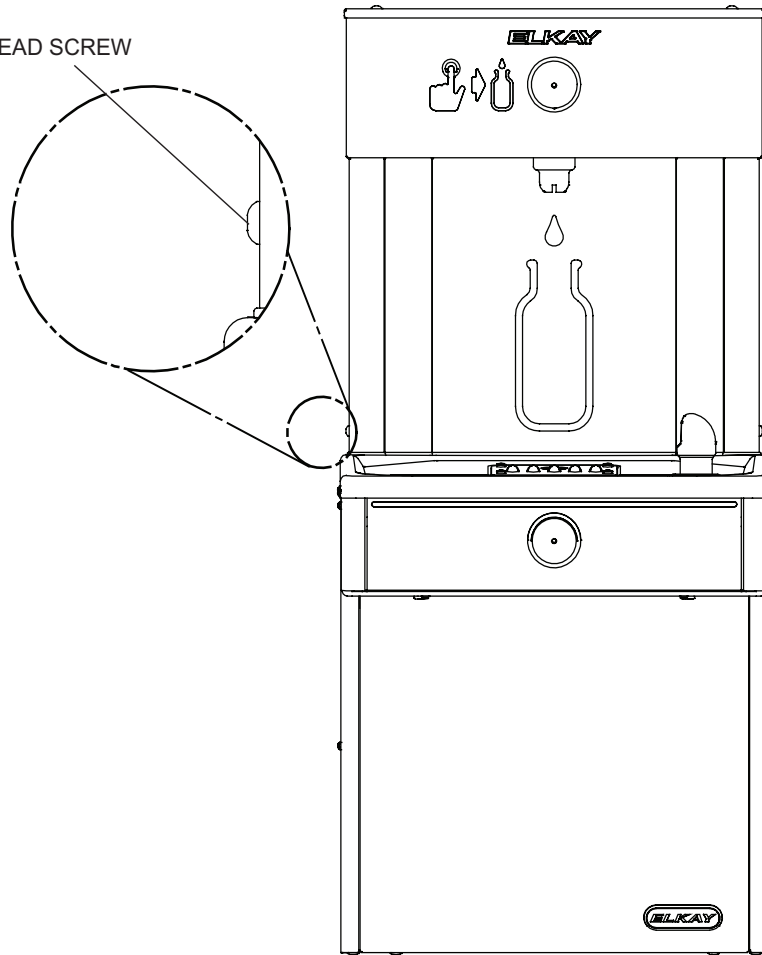


Fig. 4

REMOVAL OF BOTTLE FILLER FOR SERVICING

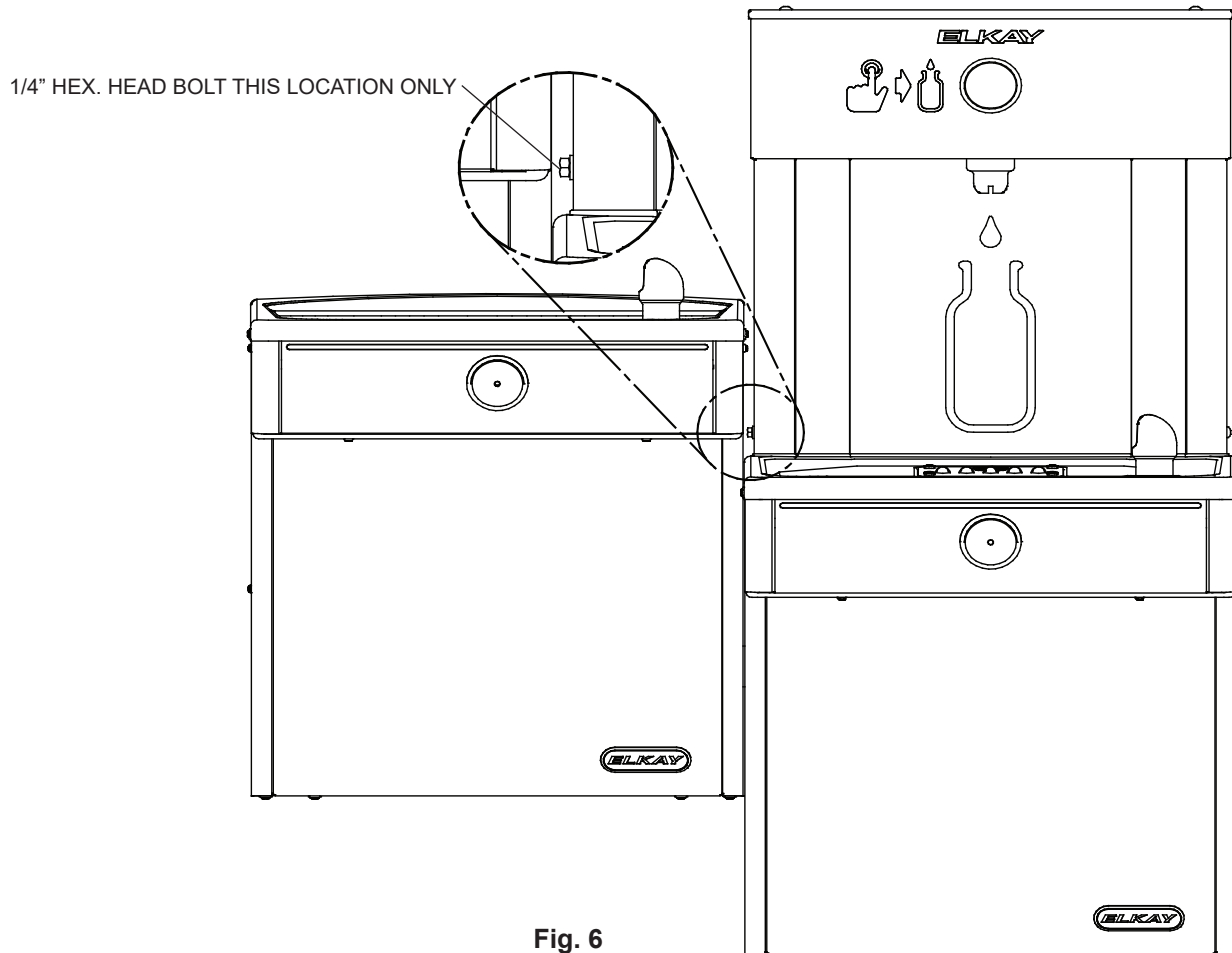
- 1) **Turn off the water supply to the Water Fountain.** **NOTE:** The Lower Front Panel of the fountain may need to be removed. To prevent scratching the basin place a towel or soft cloth over the entire basin when working above it.
- 2) **For Single Model Installations:** Loosen but **DO NOT** remove the two (2) Socket Button Head Screws from the sides of the Bottle Filler. Remove the two (2) Pinned Torx Head Screws from the Top Cover & remove the Top Cover. The Bottle Filler may then be lifted up and off the Water Fountain (The water line will still be connected from the Water Fountain to the Bottle Filler.).

1/4-20 SOCKET BUTTON HEAD SCREW

**Fig. 5**

REMOVAL OF BOTTLE FILLER FOR SERVICING

- 1) **Turn off the water supply** to the Water Fountains. NOTE: The Lower Front Panel of the fountain may need to be removed. To prevent scratching the basin place a towel or soft cloth over the entire basin when working above it.
- 2) **Loosen but DO NOT remove the Pinned Torx Head Screw** from the outer side of the Bottle Filler and loosen but DO NOT remove the 1/4" hex. Head bolt from between the two fountains (See Figs 5). Remove the two (2) Pinned Torx Head Screws from the Top Cover & remove the Top Cover. The Bottle Filler may then be lifted up and off the Water Fountain (The water line will still be connected from the Water Fountain to the Bottle Filler.)

**Fig. 6**

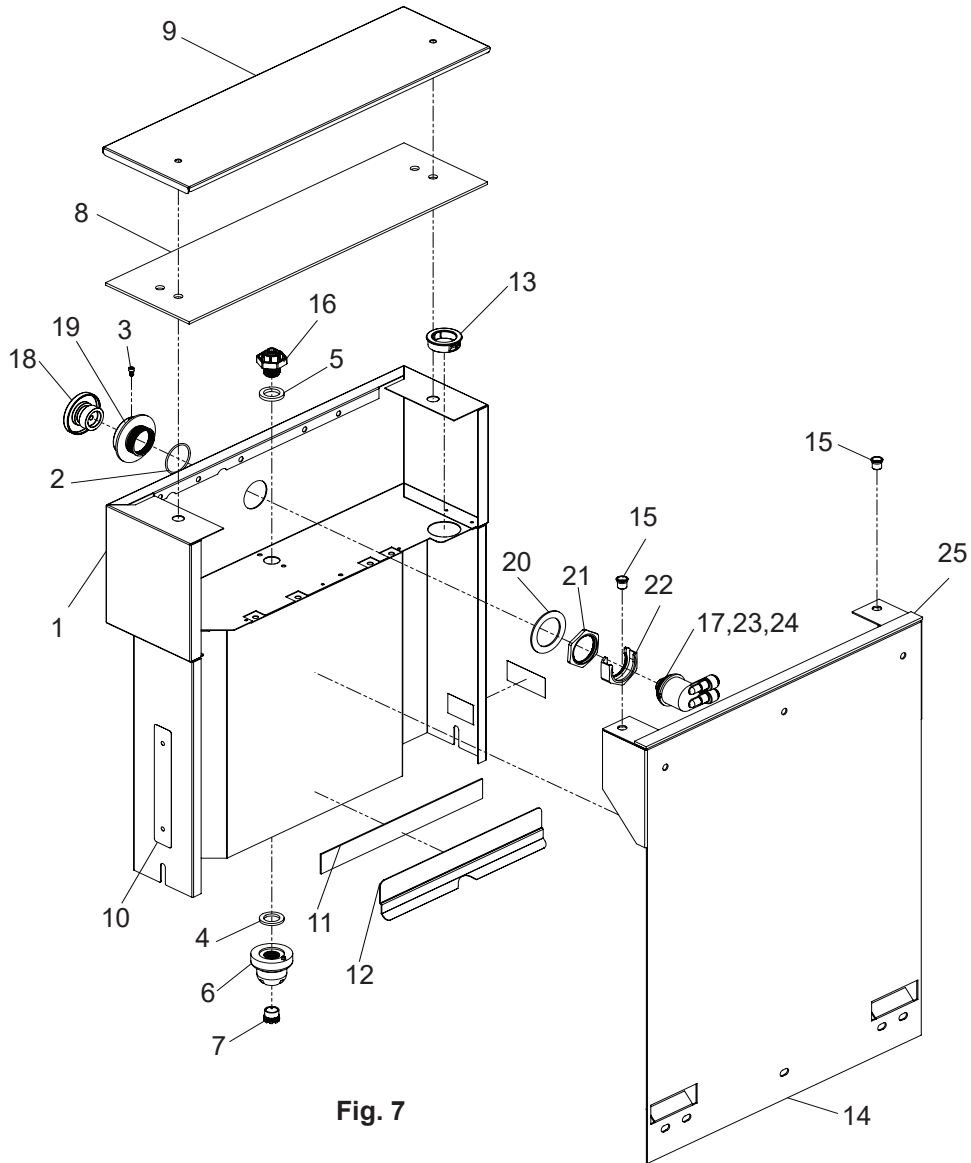


Fig. 7

PARTS LIST		
ITEM NO.	PART NO.	DESCRIPTION
1	2000001550	VR-BF TOWER ASSEMBLY
2	0000000178	"O"- RING - 1.35" ID X 1.43" OD
3	75672C	SCREW-CAP #6-32
4	56305C	GASKET-VR BUBBLER
5	100322740560	GASKET-BLACK .68 X 1.03
6	15040C	NOZZLE ASSEMBLY
7	P05031	FULL FLOW HIDDEN AERATOR
8	0000000165	SEAL - VRBF COVER
9	29018C	TOP COVER
10	96810C	DATA LABEL
11	85456C	TAPE -DBL SIDE
12	0000000231	VRBF ALCOVE Z-BRACKET
13	56332C	SNAP BUSHING 1-3/8
14	29032C	BACK PLATE VR BF
15	75744C	1/4-20 CAL STYLE RIVET NUT
16	56159C	NIPPLE-BUBBLER 1.11"
17	66822C	REGULATOR ASSY. (1.0 GPM)
18	45662C	BUTTON-PUSH
19	45663C	SLEEVE - PUSH BUTTON GUIDE
20	28308C	WASHER-SPACER 2.00 O.D.
21	40045C	NUT-HEX 1-5/16"
22	45736C	NUT-REG. MOUNT
23	10031C	1-1/8-24 RETAINING NUT
24	50985C	HOLDER-REGULATOR
25	0000000166	SEAL - VRBF WALL BRACKET

BOTTLE FILLER REPLACEMENT PART KITS	
PART NO.	DESCRIPTION
98546C	Kit - Aerator Replacement
98549C	Kit - Hardware & Waterway Parts
98552C	Kit - Retro Filter Mounting
98668C	Kit - Filter Mounting Cover
98999C	Kit - Drain Pad
99000C	Kit - Button Assembly
1000001907	Kit - Top Cover Replacement
99002C	Kit - Gasket VR BF Tower/Basin

PRINTED IN U.S.A.

FOR PARTS, CONTACT YOUR LOCAL DISTRIBUTOR OR CALL 1.800.834.4816
REPAIR SERVICE INFORMATION TOLL FREE NUMBER 1.800.260.6640

ELKAY MANUFACTURING COMPANY • 1333 BUTTERFIELD RD. DOWNERS GROVE, IL 60515 • 800.834.4816 • www.elkay.com