

ELKAY®

INSTALLATION & USE MANUAL

Pro Filtration™ Bottle Filling Stations & Coolers



Patent zurn-elkay.com/patents

⚠ **WARNING:** Cancer and Reproductive Harm - www.P65Warnings.ca.gov

⚠ **ADVERTENCIA:** Cáncer y daño reproductivo - www.P65Warnings.ca.gov

⚠ **AVERTISSEMENT:** Cancer et effets néfastes sur la reproduction - www.P65Warnings.ca.gov

Contents

1. General Information	2	3. Tools and Supplies	5
1.1 Installation Manual	2	3.1 Tools Required	5
1.2 Disclaimer	2	3.2 Installer Supplied Parts	5
1.3 Serial Number Location	3	4. Preparation	6
1.4 Contact Information	3	4.1 General Information	6
1.5 Notice of Changes	3	4.2 Water, Waste, and Electrical Locations	6
1.6 Warranty	3	5. Installation	8
2. Safety	3	5.1 Instructions for Removing Wrapper	9
2.1 General	3	5.2 Hanger Bracket Installation	8
2.2 Safety Alert Symbol	3	5.3 Installation of Cooler	9
2.3 Personal Safety	4	6. Bottle Filler Installation Instructions	9
2.4 Property Damage	5	7. Service Instructions	16
		8. Frequently Asked Questions (FAQ)	20

1. General Information

1.1 Installation Manual

Read all instructions carefully BEFORE starting the installation and familiarize yourself with the various parts of this product.

This manual contains step-by-step installation, adjustment, and maintenance instructions for the LZS8WSBPRO series bottle filling stations. Followed carefully, these instructions will result in trouble-free installation of this Elkay Manufacturing Company (Elkay) product.

The installation of this product requires electrical and plumbing connections that use specific skills and knowledge. If you are unsure or not qualified to make these connections, consult a qualified plumber, electrician, or installer. Professional installation is suggested.

Any deviations, additions, and/or deletions from the described methods, without prior written approval of Elkay, will void the warranty covering this product.

Make sure the installation and use of this product meets all local, state, and federal plumbing and electrical codes.

Save these instructions for future reference

WARNING



To avoid product or property damage, personal injury, or even possible death, carefully read, understand, and follow all the instructions in this Installation & Use Manual before installing his product.

Improper installation of this product could cause a dangerous situation that results in injury or death.

Do not operate power tools unless you read and understand the instructions and warnings in this and all other applicable labels or manuals. Proper use of tools and the products described in this guide is your responsibility.

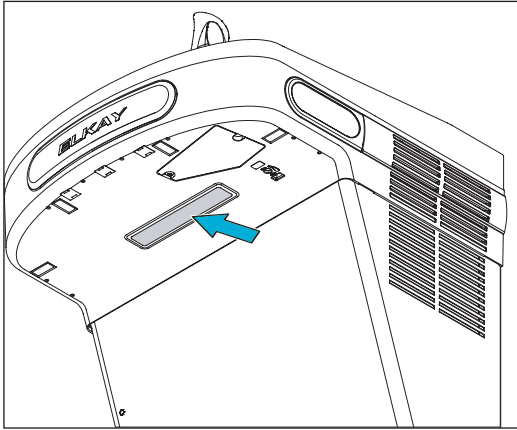
Failure to follow these instructions could result in personal injuries, water damage, and other damage to floors, pipes, walls, and other portions of your building or home.

1.2 Disclaimer

The information contained in this Installation & Use Manual is given free of charge. It is based upon technical data which we believe to be reliable and is intended for use by persons having knowledge of this technical area at their own discretion and risk. Elkay assumes no responsibility for results obtained or damage incurred from the use of this material either in whole or in part by the buyer.

1.3 Serial Number Location

Please use the serial number located on the underside of the water cooler when contacting us with questions concerning the installation of this product.



1.4 Contact Information

General Information

Elkay Manufacturing Company
1333 Butterfield Road, Suite 200
Downers Grove, IL 60515
Website: <http://www.elkay.com>

USA/Canada Customer Care

Phone: 800.476.4106
Email: CustCare@Elkay.com

International Customer Care

Phone: 630.575.4755
Email: IntlCare@Elkay.com

1.5 Notice of Changes

The information, specifications, and illustrations in this manual are based on the information that was available at the time this material was written and can change at any time. In keeping with our policy of continuing product improvement, Elkay reserves the right to change specification without notice.

All dimensions are given in inches (") and millimeters (mm).

1.6 Warranty

This product is covered by a Limited Warranty and Elkay will not be held responsible for damage of any kind in connection with the installation of the product.

Refer to the Elkay website <http://www.elkay.com/warranty> and click on drinking water products, 'Warranty for Drinking Water Products' article under the Info and Maintenance section (form 96993C).

2. Safety



Think Safety

Before performing any work, read and understand the safety instructions in this manual.

2.1 General

The Elkay Manufacturing Company (Elkay) cannot anticipate every possible circumstance that might involve a potential hazard during the installation or maintenance of this product. The warnings and instructions in this Installation Manual are, therefore, not all-inclusive. If a tool, installation procedure, or work method that is not specifically recommended by Elkay is used, you must be satisfied that it is safe for yourself and others. You should also make sure that the product will not be damaged by the methods you choose.

Most work related accidents are caused by failure to observe basic safety rules or precautions. An accident can often be avoided by recognizing potentially hazardous situations before an accident occurs. As you install and maintain this product, you must be alert to potential hazards. You should also have the necessary training, skills, and tools to perform any installation or maintenance procedure.

2.2 Safety Alert Symbol



This is the safety alert symbol. It is used to alert you to potential personal injury hazards. Obey all safety messages that follow this symbol to avoid possible injury or death.

This manual contains WARNINGS, CAUTIONS, NOTICES, SAFETY INSTRUCTIONS, and NOTES which must be followed to prevent the possibility of improper service, damage to the equipment, personal injury, or death. The following key words call the reader's attention to potential hazards.

Hazards are identified by the "Safety Alert Symbol" and followed by a signal word such as "WARNING" or "CAUTION".

2.3 Personal Safety

WARNING

These warnings indicate a potentially hazardous situation which, if not avoided, could result in serious injury or death. Follow all instructions related to the installation and/or maintenance of this product (unit).



Personal Protection

Be sure to use all personal protective equipment, such as sturdy safety glasses, work shoes, hearing protection, and gloves, whenever necessary, to ensure your own safety.



To avoid eye injury, always wear protective glasses with side shields when using power tools. Also, make sure no one else can be injured by flying particles when using power tools.



To prevent possible damage to your hearing, always wear ear protection, such as earmuffs or earplugs, when using power tools.



This product is heavy and can cause bodily injury, due to its weight or if the unit is dropped. Use two people

to lift the product when unpacking the unit or installing it onto the hanger brackets.



Wear protective gloves during installation to protect against sharp edges from sheet metal components.



Lifting Hazard

- To avoid personal injury, always use these proper lifting techniques and use two people to move heavy cartons.
- Use appropriate lifting devices to move the load.
- Always use two people when lifting heavy or bulky cartons. DO NOT attempt to lift objects that are too heavy.



Power Tool Hazard

- To prevent personal injury or possible death, always follow the electrical safety recommendations of the power tool's manufacturer.
- Do not use power tools in an unsafe manner.
 - Power tools should only be connected to a circuit protected by a ground-fault circuit interrupter (GFCI).
 - If an extension cord is required, always use an OSHA approved extension cord.



Shock and Electrocution Hazards

Failure to follow these instructions could result in severe burns, significant injuries, and even death.



Water will conduct electric current to create a short circuit, resulting in injury or death.

- Never use electric power tools around water or wet floors/surfaces.
- Keep all liquids away from electrical cords and power tools.
- If an extension cord is required, always use an OSHA approved cord.
- DO NOT create a short circuit between a source of electricity and a liquid by being in contact with both simultaneously.



Contacting live electrical wiring with power tools or hand tools can cause serious injury or death.

- Make sure all related circuit breakers are turned OFF.
- Test for live circuits or wiring inside any wall where installation of the product requires cutting into a wall.



Prior to any maintenance, make sure the unit is unplugged and circuit breakers are turned OFF.



Prior to installation, test for live circuits or wiring inside the wall before cutting or drilling into the wall.

CAUTION

These cautions indicate a potentially hazardous situation which, if not avoided, may result in minor or moderate injury. Follow all instructions related to installation and/or maintenance of this product.



Tripping Hazard

Personal injury can result from tripping over power cords, tools, or other installation items. DO NOT leave items laying around the work area.



Cutting Hazard

The installation of this product may require using power tools.

Keep hands away from the cutting edge of any tool used in the installation of our product.

Placing fingers in or around the cutting blades could result in serious personal injury.



Use Proper Tools

Always use proper tools which are in good working condition during the installation of the product. Using tools other than those listed could adversely affect the product and could result in property damage.

2.4 Property Damage



Inspect Before Cutting

Make sure no electrical wiring or plumbing is present before cutting into a wall.

3. Tools and Supplies

3.1 Tools Required

Tool	Used For
Tape Measure	Locating mounting brackets
Level	Mounting bracket installation
Power Drill	Installation of wall anchors or lag screws for mounting plate
Adjustable Pliers	Installation of P-trap
Adjustable Wrench	Installation of water inlet valve
Hacksaw	Trimming waste outlet pipe
Flat Blade Screwdriver	Adjustment of pressure regulator and coldness control valve
5/16" Nut Driver	Removal of mounting bracket and front panel
T25 Screw Driver	Removal of bottle filler access door
Tubing Cutters	To trim excess poly tube
1/4" Nut Driver	Installing door tethers to threaded studs
Personal Protective Equipment	Eye, Hand, and Toe Protection

3.2 Installer-Supplied Parts

Description	Qty.
P-trap with 1-1/4" inlet (single units)	1
Quarter turn shut-off valve with angled 3/8" outlet (filtered units)	1
Flexible 3/8" tubing and 3/8" tube union fittings (filtered units)	-
1-1/4" flexible drain pipe	1

4. Preparation

4.1 General Information

1. This water cooler is designed for indoor use only and should not be installed outdoors or in a humid environment.

NOTICE A water supply pressure below 20 psi will result in decreased water flow through the unit and damage to the product. A pressure above 105 psi will also cause damage to the product.

2. Make sure the water supply pressure to the product is between 20 and 105 psi. The LZ filtered units require 40 psi minimum water pressure. Recommended operating pressure is 50psi.
3. Use care when opening and removing the packaging to prevent damage to the product.
 - a. Inspect the product for any shipping damage and report it immediately to the location of purchase. Installation of a damaged product will void the warranty.
 - b. Confirm that all parts have been included for the proper installation of this product. Contact the location of purchase if damaged parts are found.

NOTICE Make sure no electrical wiring, potable water inlet pipes, or drainwater outlet pipes will be damaged during installation of the product. Damage to any of these items can cause electrical damage, fire, and/or water damage.

4. Shut off the water supply source and disconnect power to the electrical outlet being used to operate the product before starting installation.

NOTICE Mounting hardware to be supplied by customer.

4.2 Water, Waste, and Electrical Locations

This section contains general information for the required utilities for the cooler. Use the Location Drawing in each section to determine the exact location of the utilities.

1. Install water supply in accordance with local plumbing codes.
 - a. Use at least 3/8" O.D. unplated copper tube for supply line.
 - b. Pipe should extend 3" (76mm) maximum from wall.
 - c. Install a quarter-turn, installer supplied, shut-off valve.

NOTICE Connect shut-off valve to water inlet. Do not use a piercing-type saddle valve for supply water which will reduce water flow and clogs easier.

Note: This water cooler has been designed and built to provide water to the user which has not been altered by materials in the cooler waterways. The grounding of electrical equipment such as telephones, computers, etc. to water lines is a common procedure. The grounding may be in the building but may also occur away from the building. This grounding can cause electrical feedback into a water cooler creating an electrolysis, which creates a metallic taste of causes an increase in the metal content of the water.

NOTICE Water cooler must be connected to the water supply using a dielectric coupling. The cooler is furnished with a non-metallic strainer which meets this requirement. The drain trap which is provided by the installer should also be plastic to completely isolate the cooler from the building plumbing system.

2. Install a waste water drain.
 - a. Waste outlet must be minimum 1-1/4" O.D. for single units.
 - b. Pipe should extend 2" (50mm) from wall.
3. Install a grounded, electrical outlet on a dedicated circuit.

WARNING To prevent electrical shock, fire, or electrocution, install grounded outlet. Do not use an adapter or extension cord.

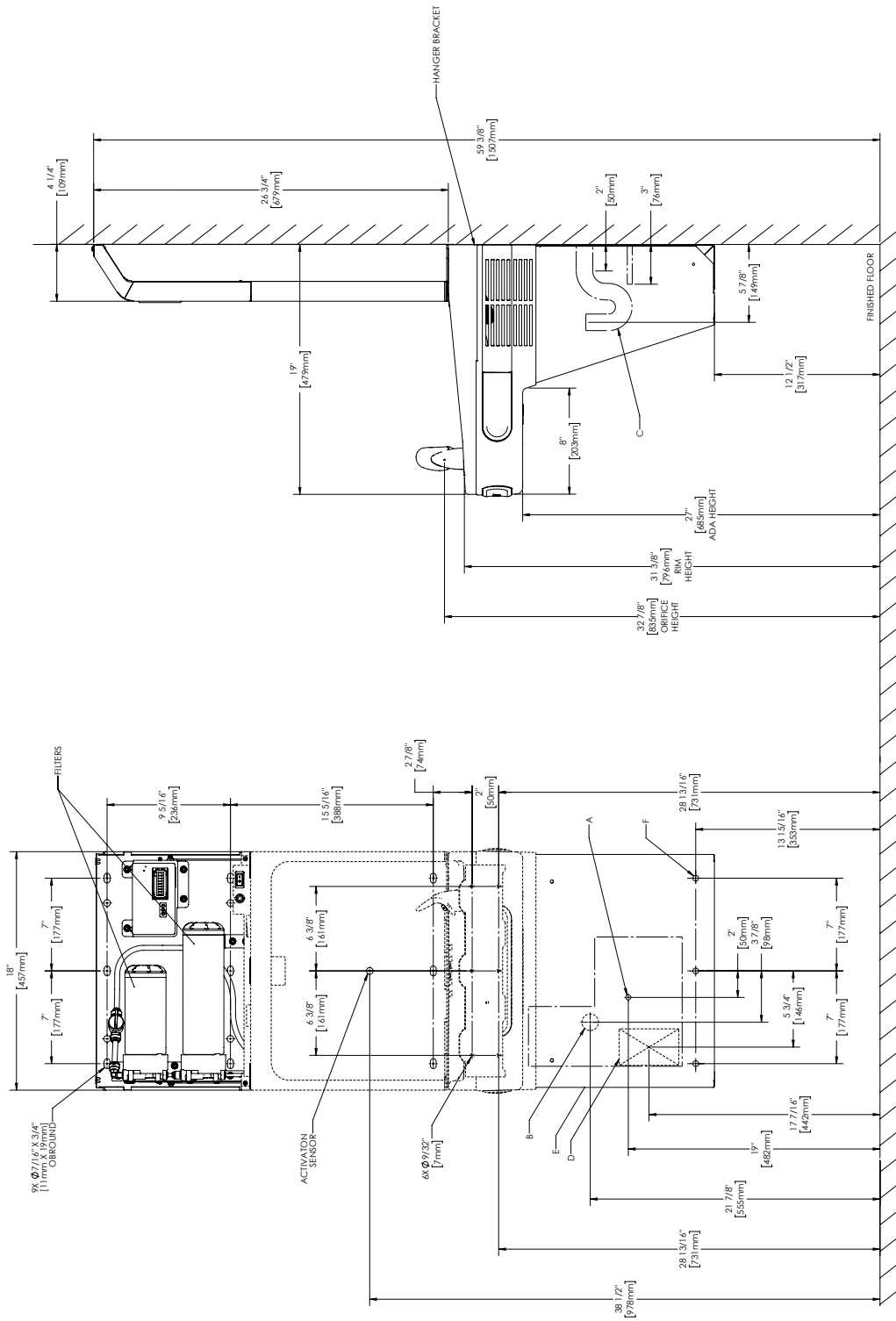


Fig. 1

REDUCE HEIGHT BY 3 INCHES FOR INSTALLATION OF CHILDREN'S ADA COOLER

LEGEND:

- A= RECOMMENDED WATER SUPPLY LOCATION. SHUT-OFF VALVE (NOT FURNISHED) TO ACCEPT 3/8" O.D. UNPLATED COPPER TUBE. UP TO 3" (76MM) MAXIMUM OUT FROM WALL.
 - B= RECOMMENDED WASTE OUTLET LOCATION. TO ACCOMMODATE 1-1/4" NOMINAL DRAIN. DRAIN STUB 2" (51MM) OUT FROM WALL.
 - C= 1-1/4" TRAP (NOT FURNISHED).
 - D= ELECTRICAL SUPPLY (3) WIRE RECESSED BOX DUPLEX OUTLET.
 - E= INSURE PROPER VENTILATION BY MAINTAINING 6" (152MM) MINIMUM CLEARANCE FROM CABINET LOUVERS TO WALL.
 - F= 7/16" (11MM) BOLT HOLES FOR FASTENING TO WALL.
- NOTE: NEW INSTALLATIONS MUST USE GROUND FAULT INTERRUPTER (GFCI).

5. Installation

5.1 Instructions For Removing Wrapper

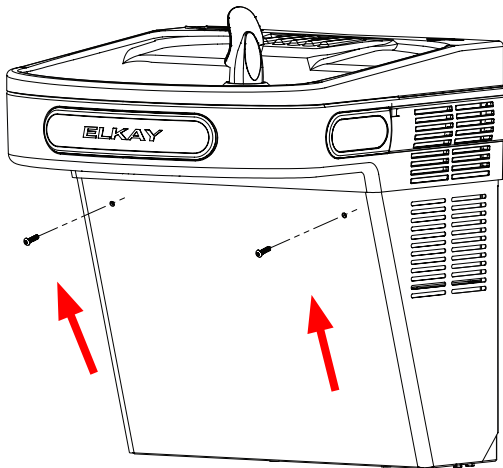


Fig. B(i)

1. Remove the two security screws (size T25) from the front panel. (see Fig B(i))
NOTE: SCREW THREADS INTO BUSHING WHILE ANGLED. DO NOT ATTEMPT TO THREAD SCREW INTO BUSHING HORIZONTALLY.
2. Gently pull the wrapper down and rotate the wrapper to a downward position (see Fig B(ii)).
3. To remove the wrapper, hold each side and gently pull wrapper up and out of pivoting bracket (see Fig B(iii)).

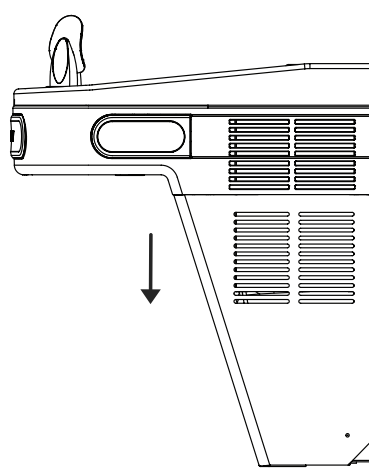


Fig. B(ii)

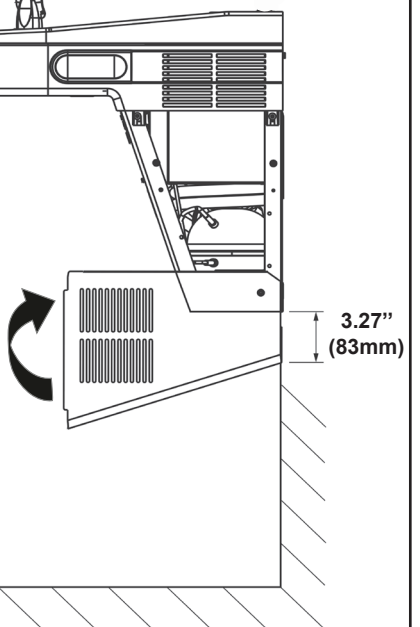


Fig. B(iv)

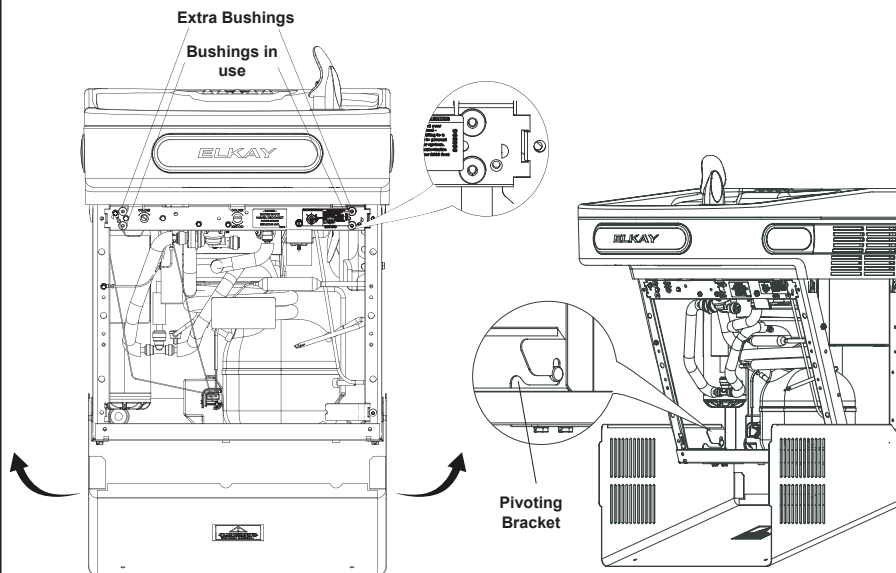


Fig. B(iii)

Fig. B(v)

- ⚠ **CAUTION:** WRAPPER DROPS AND SWINGS WHEN SECURITY SCREWS ARE REMOVED.
- ⚠ **CAUTION:** DO NOT LEAN ON WRAPPER.
- ⚠ **CAUTION:** DO NOT USE POWER TOOL TO TIGHTEN. DO NOT OVERTIGHTEN.

NOTE:

1. Ensure that there are no plumbing or external objects below the wrapper in the specified dimension. The specified (3.27") minimum distance is required for the wrapper to swing out (see Fig B(iv)).
2. Removing the wrapper from the pivoting bracket when servicing the unit is recommended. The wrapper may be left in place for quick serviceability (see Fig B(iii)).
3. When re-attaching wrapper, ensure each side of wrapper is engaged to pivoting bracket (see Fig B(v)).
4. Once the wrapper is in place, rotate wrapper up and under the shroud. Ensure thru holes on wrapper are aligned with plastic bushing threads on the frame prior to engaging security screws. Ensure screw is angled relative to the ground and perpendicular to wrapper surface prior to engagement. Hand tighten prior to using hand tool to avoid cross-threading.
5. Four plastic bushings are located in the cross brace of the frame. The lower two bushings align with wrapper holes and the top two bushings are extras in case of replacement (see Fig B(iii)).

5.2 HANGER BRACKET INSTALLATION

1. Remove hanger bracket fastened to back of cooler by removing one (1) screw.
2. Mount the hanger bracket as shown in Figure 1 (Pg. 7).

NOTE: Hanger Bracket **MUST** be supported securely. Add fixture support carrier if wall will not provide adequate support. Anchor hanger securely to wall using all six (6) 1/4 in. dia. mounting holes.

IMPORTANT: 5-7/8 in. (150mm) dimension from wall to centerline of trap must be maintained for proper fit.

5.3 INSTALLATION OF COOLER

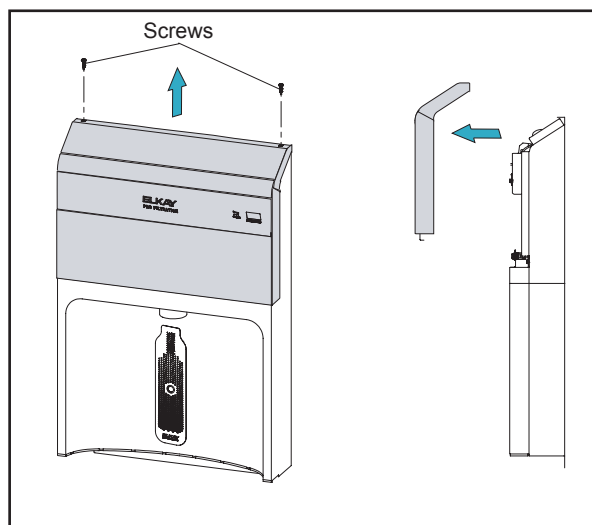
1. Hang the cooler on the hanger bracket. Be certain hanger bracket is engaged properly in the slots on the cooler back as shown in Figure 1 (Pg. 7).
2. Refer Fig B(i) to B(iv), Pg. 8 for wrapper removing instructions.
3. Secure cooler frame to wall by installing (2) screws and washers (not supplied) in lower holes. (See Fig. 2, Pg. 13). Make sure the screws engage in a structural member.
4. Connect the supply water to the filter inlet tube.
5. Install trap.

IMPORTANT: If it is necessary to cut the drain, loosen the screw at the black rubber boot and remove tube, check for leaks after re-assembly.

6. Bottle Filler Installation Instructions

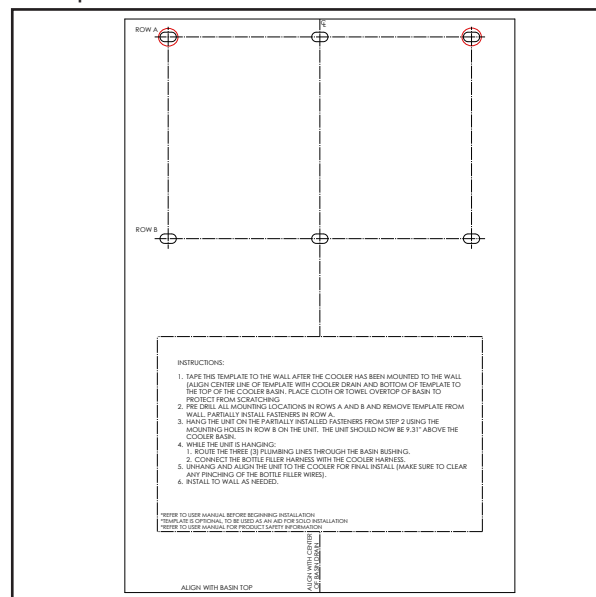
1. Remove two (2) mounting screws securing the top cover to the bottle filler with torx T25 screwdriver. Remove the top cover.

Note: Do not discard mounting screws, they will be needed to reinstall the top cover.



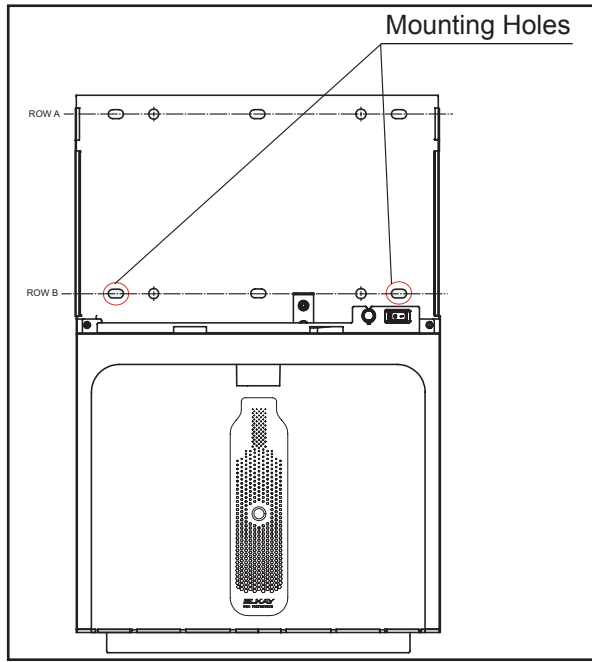
2. Tape the template (provided with the unit) to the wall. Align center line of template with cooler drain and bottom line of template to the top of the cooler basin. Mark and drill pilot holes for top row (ROW A) of mounting holes in the template and partially install fasteners (not provided) in the two outermost hole locations, and remove template from wall.

Note: The installation template is an optional aid, refer to rough-in drawing if the template is not preferred.

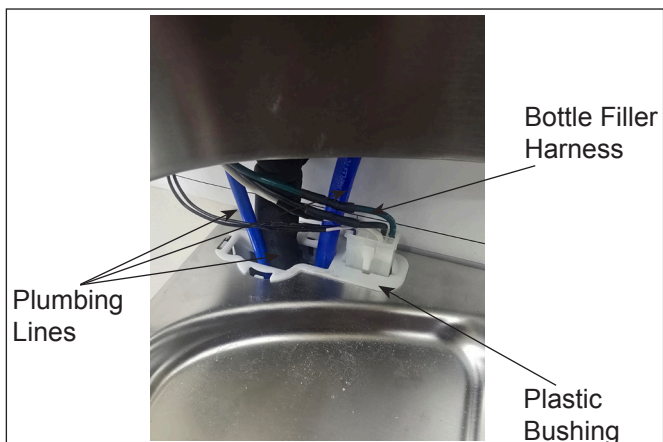


3. Hang the unit on the two partially installed fasteners from step 2 using the mounting holes in row B on the unit. The unit should now be 9.31" above the cooler basin.

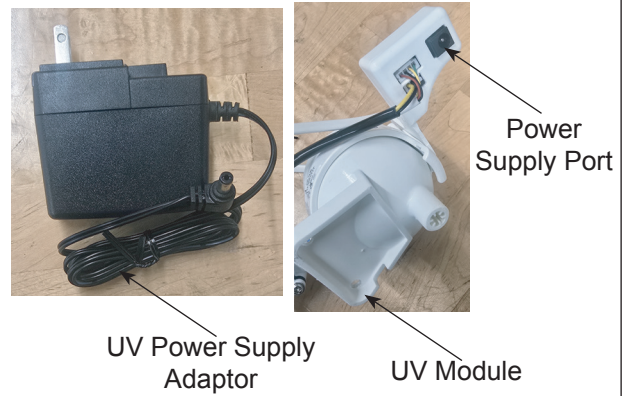
Note: This is an intermediate step to aid in routing the plumbing lines to the cooler and connecting the wiring harnesses; this is not the final position of the bottle filler.



4. While the unit is hanging:
- Route the three (3) plumbing lines through the snap-in bushing in the basin.
 - Connect the bottle filler harness with the cooler harness.

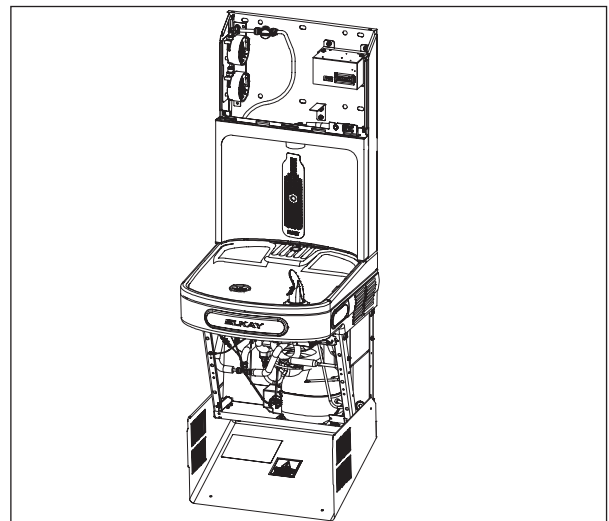


Note: If installing a unit with a UV module, route the power supply cable through the plastic bushing on the basin (from the bottom up), and behind the alcove to plug in to the UV module as shown below.

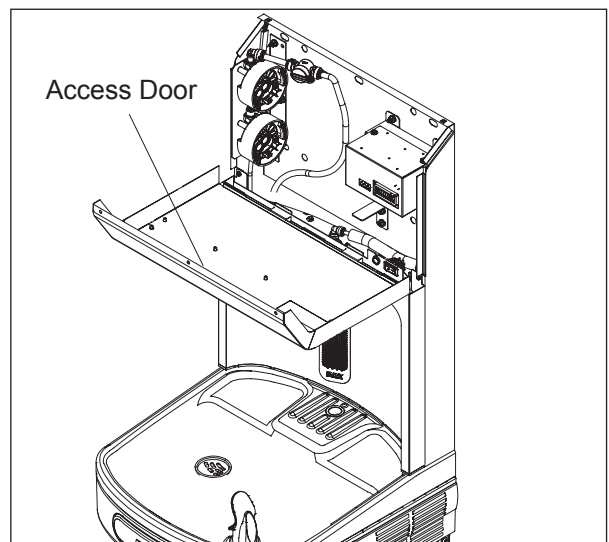


5. Remove the bottle filler from the partially installed fasteners, remove the fasteners from the wall and align the bottle filler to the cooler. Secure the top row of mounting holes on the bottle filler using the pre-drilled holes from step 2 and secure the remaining 2 mounting holes in that row. Secure the 4 remaining mounting holes in the second row.

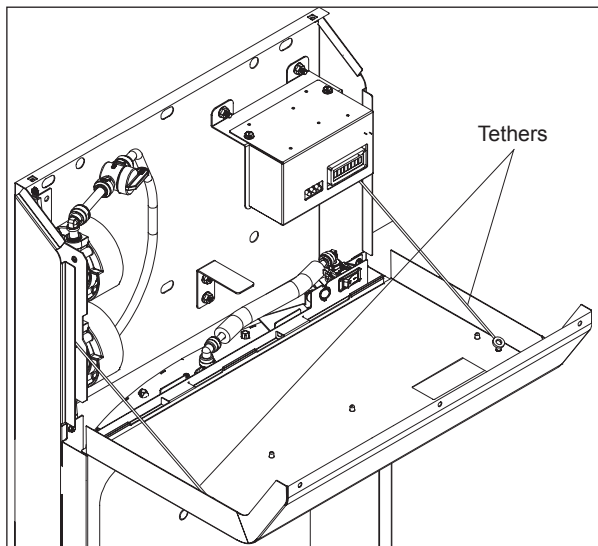
Note: Make sure to clear any pinching of the bottle filler wiring or plumbing while aligning the bottle filler to the cooler.



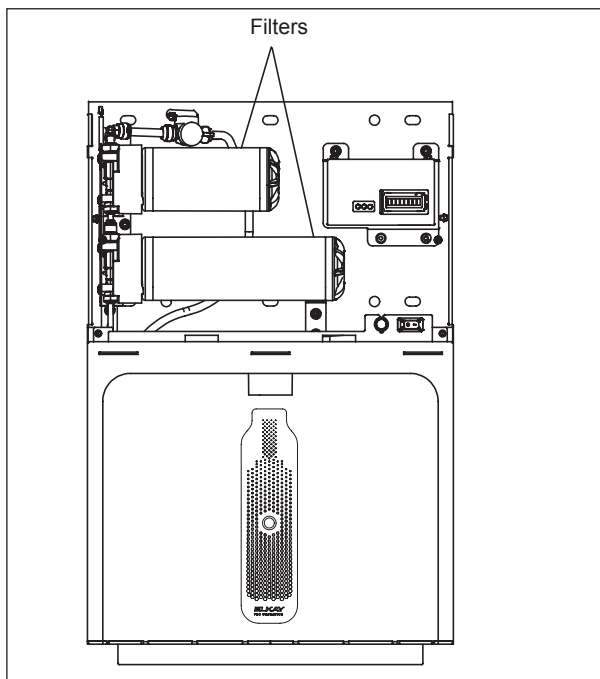
6. Reinstall the filter access door by hanging it by the tabs on the bottom edge of the door.



7. Attach the tethers that are hanging from the control board mounting bracket and the filter bracket to the corresponding PEM studs on the inside face of the filter access door (use the provided #6 mounting screws). Hand tighten first and then wrench tighten no more than 1/2 of a rotation, do not over tighten.



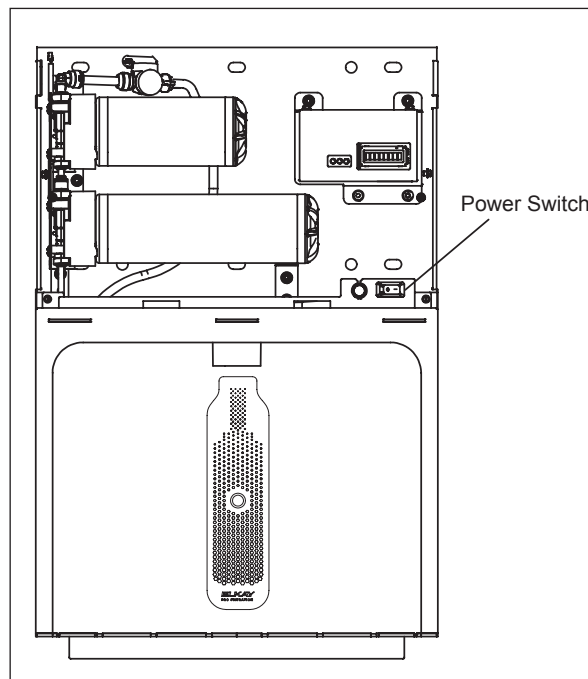
8. Before installing filters, make sure power cutoff switch is set to 'off' and water shut off valve is closed. Remove filter from carton, remove protective cap, attach filter to filter head by firmly inserting into head and rotating filter clockwise. Ensure that front facing label can be read when filter is installed.



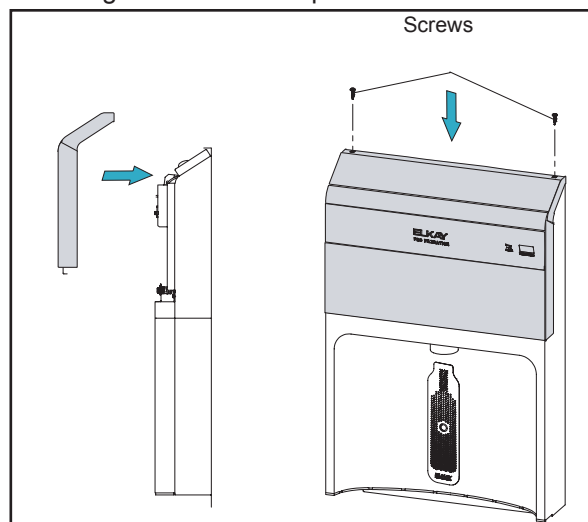
9. Connect the plumbing lines in the cooler (see labels provided on plumbing lines).
- 3/8" w/o Armaflex to the outlet of the evaporator
 - 3/8" w/o Armaflex to the supply line
 - 1/4" w/o Armaflex to the inlet of the evaporator

10. Connect electrical power by plugging in unit's power cord.
11. Turn on main water supply and turn the power switch on to the right side and check for leaks.

Note: Ensure drain line is installed to avoid leakage into the cooler during auto-flush procedure.



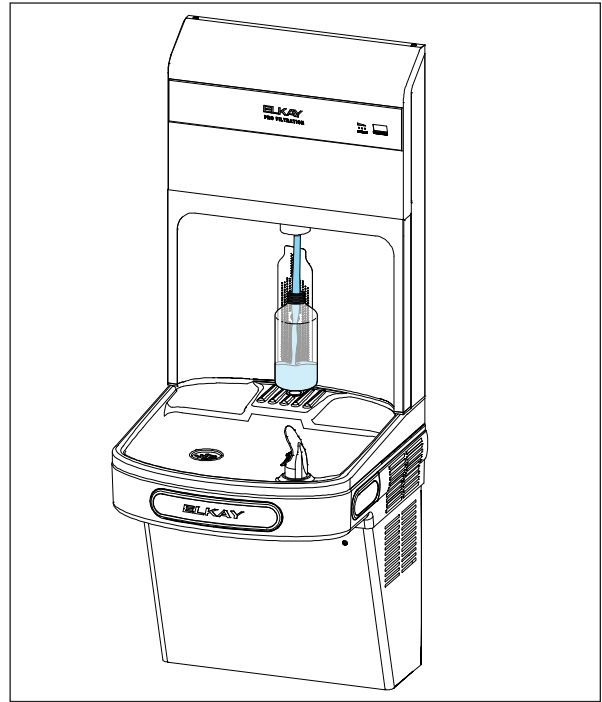
12. Ensure that the auto flush timer begins to countdown, after the countdown expires, the system will begin an automatic filter flush procedure. Wait for auto flush procedure to complete, this should take 3 to 5 minutes.
13. Once it is confirmed that there are no leaks close or resecure the filter access door by using the two mounting screws from step 1.



14. Install the lower panel back on water coolers.
15. When re-attaching the cooler wrapper, push wrapper up and under the shroud. Make sure wrapper and bushing holes are aligned prior to inserting screw, do not over tighten. Units are now ready for use.

16. Verify proper dispensing from the bottle filler by placing a cup under the water dispenser spout and verify the bubbler operation by pressing the push bar on the front panel.

Note: The first initial dispenses might have air in the line which may cause a sputter. This will be eliminated once all air is purged from the line. A steady stream of water assures all air is removed. If air is trapped in the inlet line or filter micro bubbles, which make the water appear cloudy, may appear. These bubbles will dissipate and the water will be clear.



Instructions To Access Programming Button

1. Remove two mounting screws that secure the filter door from top and rotate the access door forward and hold it by using the tethers from the control board.
2. Button is located in lower right corner of bottle filler (See Fig. A, Pg. 12).

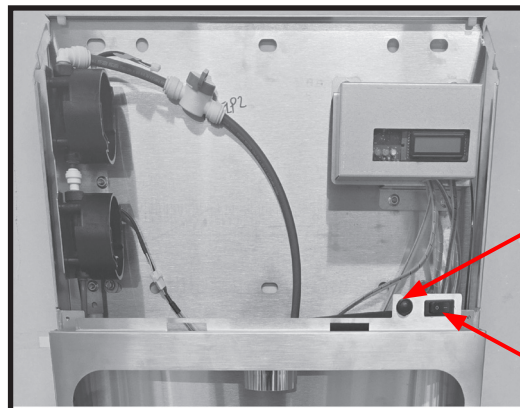


Fig. A

Programming Button

Power Cutoff Switch

Instructions For Replacing Filters



WARNING Turn off power when servicing filters.

1. Remove two mounting screws from top and rotate the access door forward and hold it by using the tethers from the control board.
2. Turn off water supply by turning the water shut off valve counter clockwise; dispense water to relieve pressure by using bottle filler or bubbler.
3. Turn off electrical power by turning power cutoff switch to off position.
4. Hold a rag or towel underneath the filter before removing to catch any water dripping. Turn used filter counter-clockwise 1/4 turn to remove from filter head.
5. Remove cap from new filter and place the cap on the used filter to seal it.
6. Insert new filter into existing filter head and turn fully clockwise.
7. Turn on electrical power by turning power cutoff switch to on position and turn on water supply by turning the water shut off valve clockwise.
8. After turning the power cutoff switch to "on" wait for the automatic filter flush timer to begin counting down. After countdown is complete, the unit will continuously flush water through the system. This should take 3-5 minutes.
9. After filter flush is complete, close access door and reinstall mounting screws.

Reference Figures

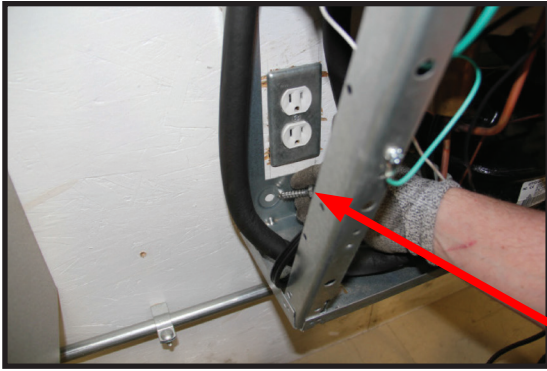


FIG. 2

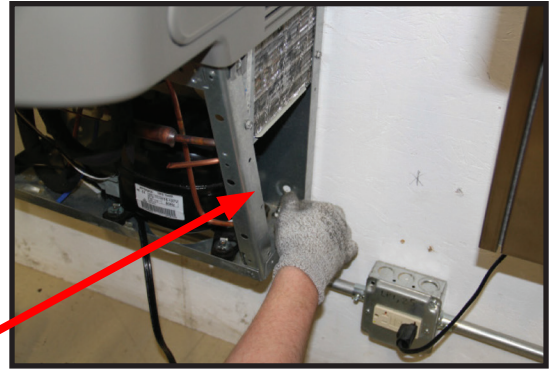


FIG. 3

Secure cooler frame to wall by installing (2) screws and washers (not supplied).



Fig. 4

Connect the bottle filler electrical harness.
(Gasket removed from bottle filler for clarity)

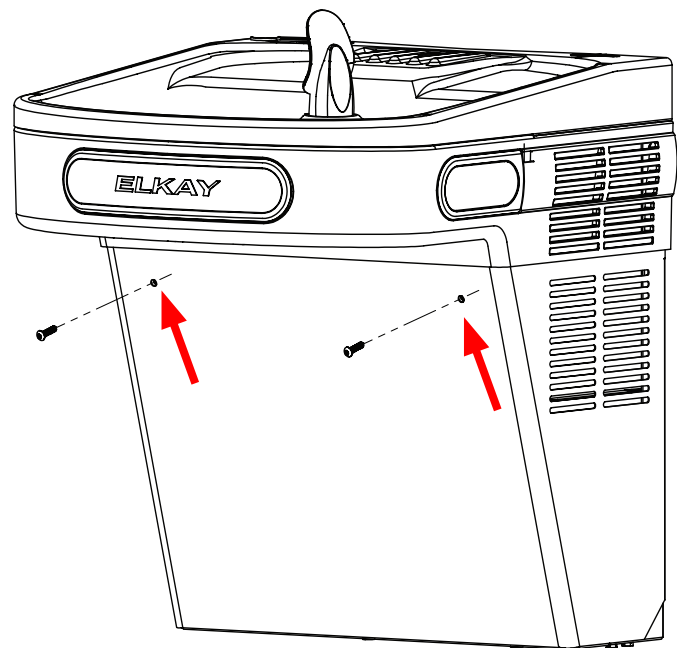


Fig. 5

OPERATION OF QUICK CONNECT FITTINGS

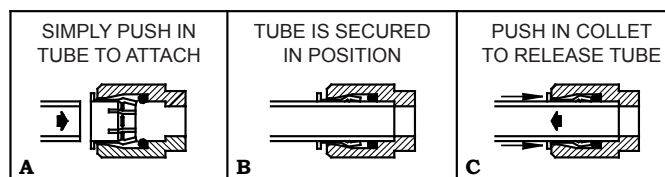


Fig. 6

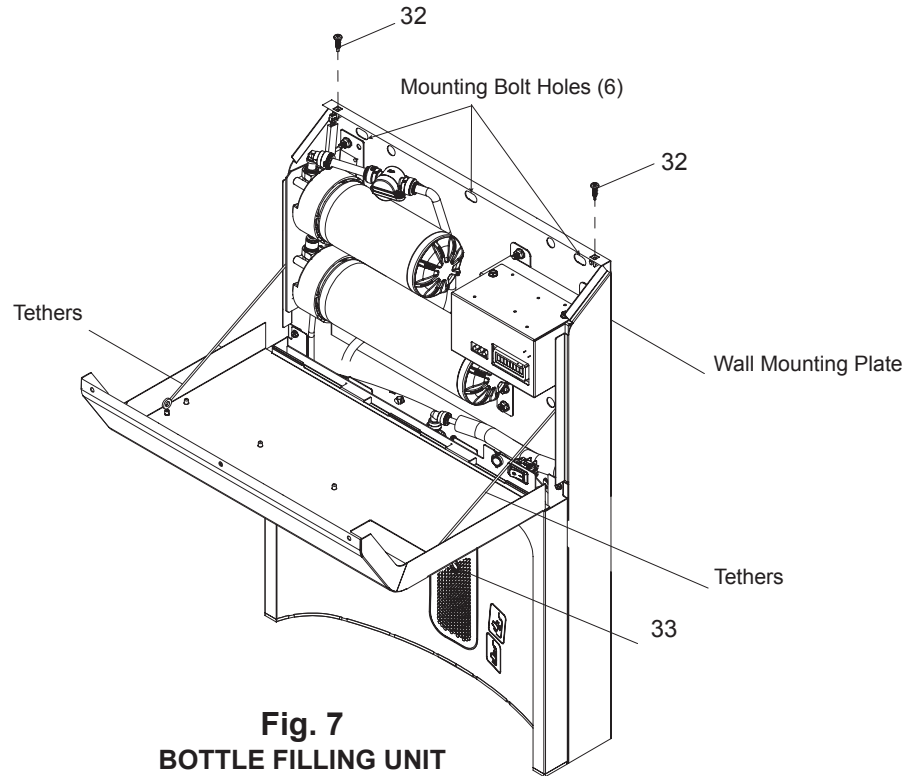


Fig. 7
BOTTLE FILLING UNIT

**115V Refrigerated Wiring Diagram with Alpha/Numeric Display
Connected-Ready - Enhanced Bottle Filler**

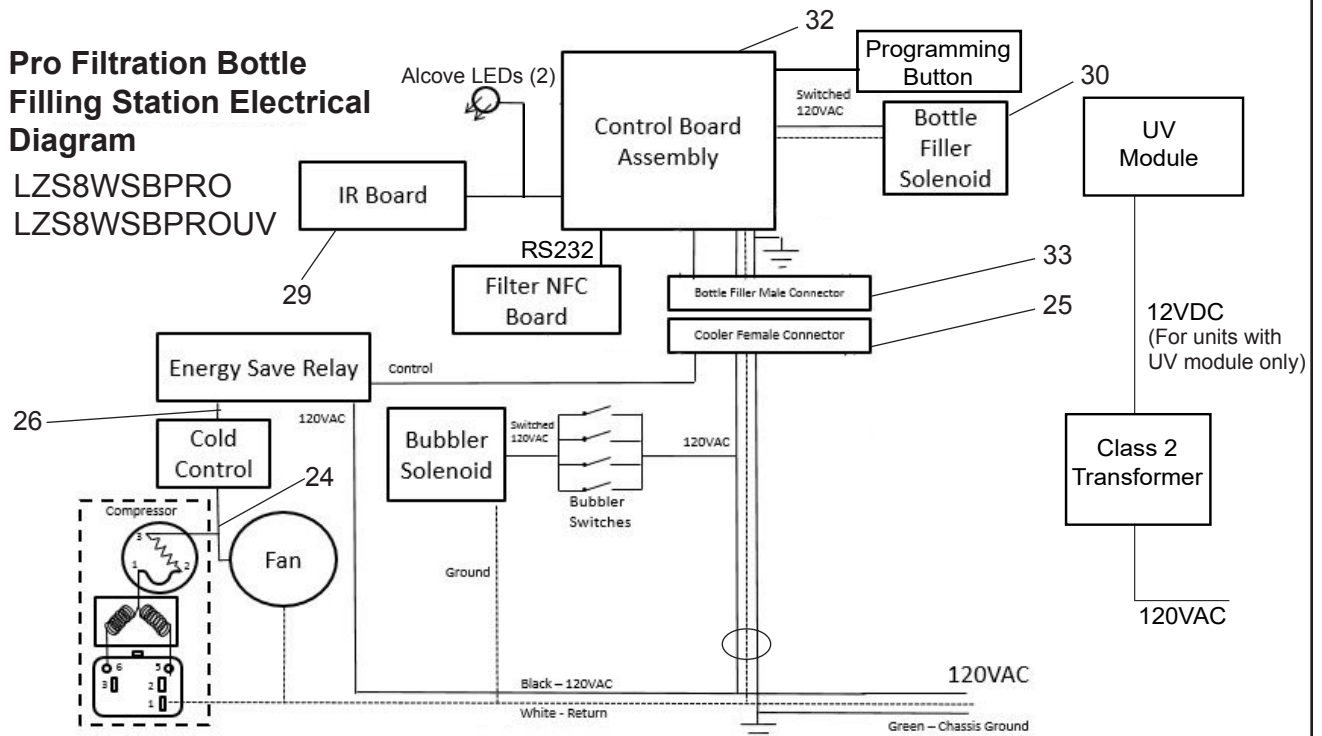
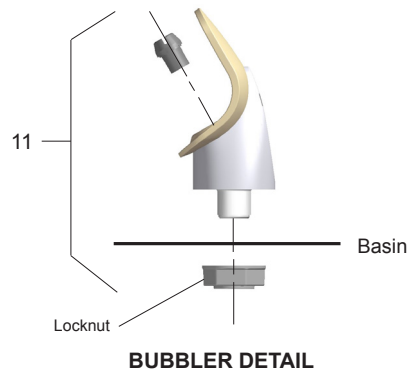


Fig. 8

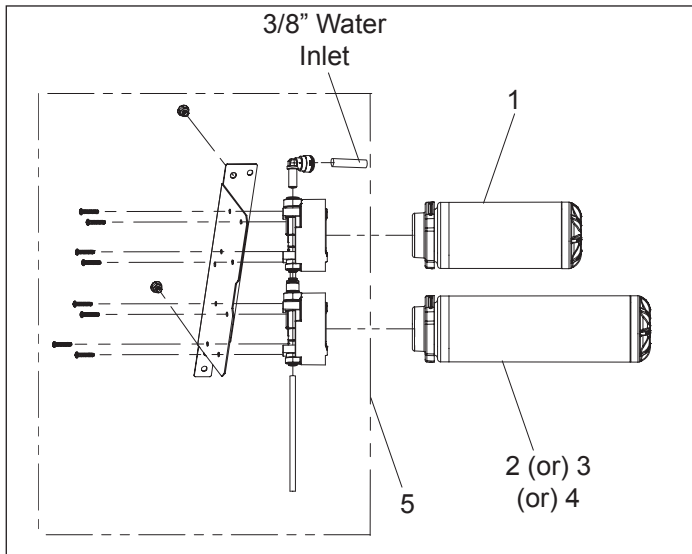
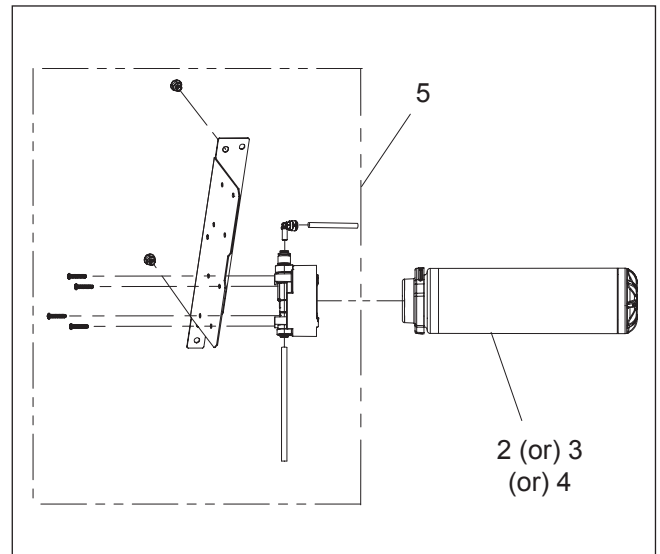
⚠ WARNING

- **INGESTION HAZARD:** This product contains a button cell or coin battery.
- **DEATH** or serious injury can occur if ingested.
- A swallowed button cell or coin battery can cause **Internal Chemical Burns** in as little as **2 hours**.
- **KEEP** new and used batteries **OUT OF REACH of CHILDREN**
- **Seek immediate medical attention** if a battery is suspected to be swallowed or inserted inside any part of the body.



**Fig. 9****NOTE:**

When installing replacement bubbler and pedestal, tighten nut only to hold parts snug in position. Do Not Overtighten.

WATERSENTRY® FILTER PARTS LIST**Fig. 10****Fig. 10 A****WATERSENTRY® Filter Detail**

WATERSENTRY® FILTER PARTS LIST		
ITEM NO.	PART NO.	DESCRIPTION
1	FSR5	Sediment Filter
2	FL6	High-Capacity Lead 6,000 gallon capacity
3	FL10	Ultra-Capacity Lead 10,000 gallon capacity
4	FLP4	Total PFAS + Lead 4,000 gallon capacity
5	1100000031	Sediment Filter Kit – Includes Filter head, harness and mounting screws

**Fig. 11****Note:**

The filter status indicator shows the filter condition using colors. Blue indicates normal operation, no immediate attention needed. Red indicates immediate attention required to maintain proper function.



Scan for trouble shooting and to sign up for auto replenishment of authentic Elkay filters.

Note: Danger! Electrical shock hazard. Disconnect power before servicing unit.

7. Service Instructions

Lower and Upper Shroud

To access the refrigeration system and plumbing connections, Remove two (2) screws from front of cooler to remove the lower shroud. To remove the upper shroud for access to the pushbars, regulator, solenoid valve or other components located in the top of the unit, remove lower shroud, disconnect drain, remove four screws from tabs along lower edge of upper shroud, unplug two wires and water tube.

Bubbler

To remove the bubbler, first disconnect the power supply. The underside of the bubbler can be reached through the access panel on the underside of the upper shroud. Remove the access panel by removing the retaining screw. To remove the bubbler, loosen locknut from the underside of the bubbler and remove the tubing from the quick connect fitting per the Operation Of Quick Connect Fittings section in the General Instructions. After servicing, replace the access panel and retaining screw.

Switches Behind the Push Bar

The regulator in an EZ cooler is always held fully open by the use of a single regulator nut (See Item 9, Fig. 12). Water is not dispensed until the pushbar is depressed to activate a switch which then opens a solenoid valve.

To remove sidebars, from the inside compress the flared tabs and pull out carefully. To reinstall side pushbars, the front of the pushbar is inserted first. While keeping the switch depressed, snap the rear of the pushbar into position.

Cleaning

Stainless Steel

- General cleaning: use an ordinary mild detergent and soft cloth, rinse and towel dry.
- Steel soap pads should never be used; particles can adhere to a stainless steel basin surface and will eventually rust.
- Light scratches are normal for stainless steel basins; over time they will blend into the uniform finish pattern.
- Do not use cleaners containing acids or chlorides, these will cause the stainless steel to oxidize.

Plastic Components

- General cleaning: use an ordinary mild detergent and soft cloth, rinse and towel dry.
- Wiping the surface clean to remove debris or build up will not hurt the antimicrobial properties.

Temperature Control

- Factory set at 50°F (+/- 5°F) under normal conditions. For altitude adjustments, refer to sticker on left side of top bar.

Stream Height Adjustment

VIEW OF UNDERSIDE OF BASIN SHROUD

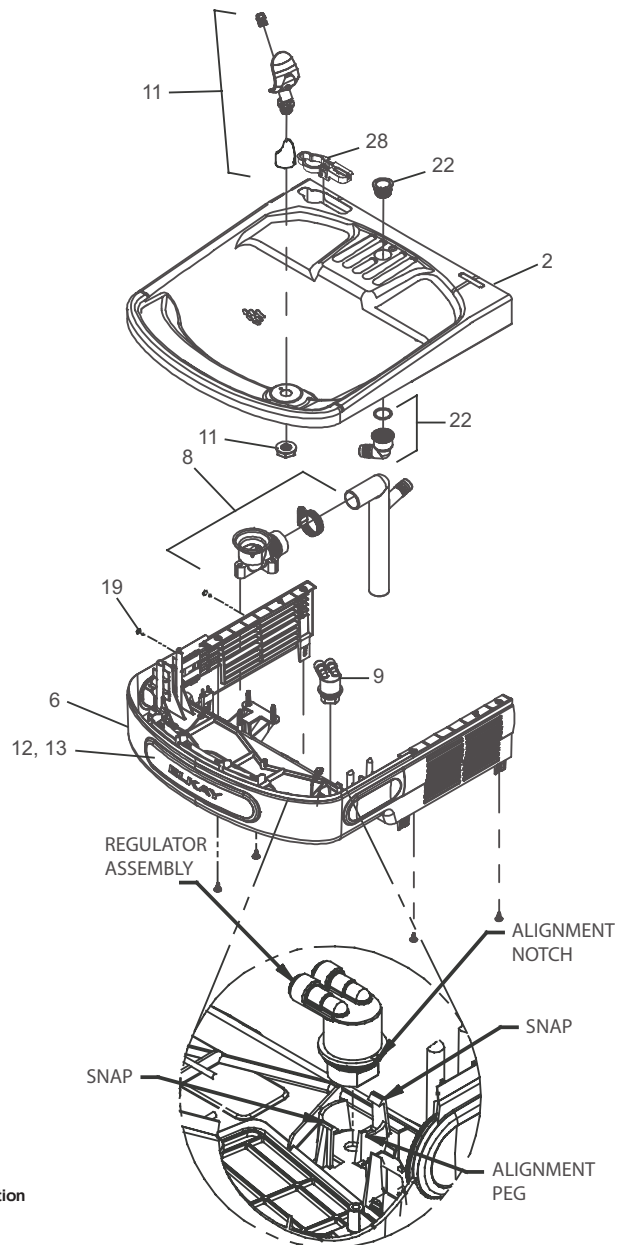
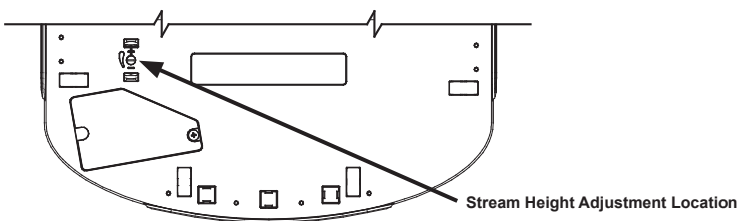


Fig. 12

Programming Instruction

Depress Button for 5 seconds to activate main menu, then release

Display will cycle through all menu options for 2 seconds each for 2 cycles, then return to bottle count display if no user input is detected

Display will cycle through all sub-menu options for 2 seconds each for 2 cycles, then return to main menu if no user input is detected

Selections are saved upon exit from each sub-menu.

Top level	Sub Menu 1	Sub Menu 2	Notes	End Action
Info	Lists current settings			Returns to Main Menu
Errors	Lists active errors			Returns to Main Menu
AutoFlus			Enable or disable the automatic flushing of new filter(s) upon installation	Drops to next level when selected
	Off		Manual flush required after filter change	Returns to Main Menu
	On (default setting)		Auto-flush enabled	Returns to Main Menu
FLSWATTM (flush wait time)			Set duration of time between detection of new filter and filter auto-flush initiation	Drops to next level when selected
	15 seconds		15 second wait time	Returns to Main Menu
	30 seconds (default setting)		30 second wait time	Returns to Main Menu
	45 seconds		45 second wait time	Returns to Main Menu
Prdt Type			Enable or disable connection to plumbSMART “Connected” endpoint board	Drops to next level when selected
	Conn = No (default setting)		Connection disabled	Returns to Main Menu
	Conn = Yes		Connection enabled	Returns to Main Menu
MLTFILTR (multi-filter)			Configure product filter configuration	Drops to next level when selected
	No (default setting)		Single-filter system	Returns to Main Menu
	Yes		Dual-filter system	Returns to Main Menu
Set time			Set product date-time	Drops to next level when selected
	Year		Set current year (2025-2099)	Drops to next level when selected
	Month		Set current month (1-12)	Drops to next level when selected
	Date		Set current day (1-31)	Drops to next level when selected
	Day		Set day of week (Mon-Sun)	Drops to next level when selected
	AM/PM		Set AM/PM	Drops to next level when selected
	Hour		Set hour (1-12)	Drops to next level when selected
	Minute		Set minute (0-55)	Returns to Main Menu
Refrig			Toggle refrigeration on/off	Drops to next level when selected
	No		Refrigeration disabled	Returns to Main Menu
	Yes (default setting)		Refrigeration enabled	Returns to Main Menu
Range			Adjusts sensitivity of bottle detection sensor. The lower the number, the closer to the sensor the bottle needs to be to activate.	Drops to next level when selected
	1-10 (default: 2)			Returns to Main Menu
B-Light (backlight)			Set brightness of Bottle Count display	Drops to next level when selected
	25%		(dimmet)	Returns to Main Menu
	50%			Returns to Main Menu
	75% (default setting)			Returns to Main Menu
	100%		(brightest)	Returns to Main Menu
EnerSave			Configure Energy-Saving Mode (ESM)	Drops to next level when selected
	Off (default setting)			Returns to Main Menu
	On		Set ESM on/off time: 24 hours – 12-11AM and 12-11PM	Drops to next level when selected
		WDn (Weekday ON)	Select weekday “on” time	Drops to next level when selected
		WdF (Weekday OFF)	Select weekday “off” time	Drops to next level when selected
		WEn (Weekend ON)	Select weekend “on” time	Drops to next level when selected
		WEf (Weekend OFF)	Select weekend “off” time	Drops to next level when selected

Enhanced EZH2O Error Codes

Error Code	Error Description	Corrective Action
BF01, BF02	Firmware error	<ul style="list-style-type: none"> Shut down unit for at least 30 seconds and restart. If error persists, replace control board.
BF03	Continuous Flow	<ul style="list-style-type: none"> System detected continuous flow lasting longer than 1 minute. Inspect system for leaks, release bubbler shroud switches, clear area in front of IR sensor and clean sensor lens. Close water shutoff valve, power cycle unit, and re-open valve. If error persists, replace solenoid.
BF04	Lower filter Communication error - filter tag	<ul style="list-style-type: none"> System could not detect genuine Elkay PRO filter in lower filter position. Ensure Elkay PRO filter is properly installed and power cycle the unit. If error persists, replace with new Elkay PRO filter.
BF05	Upper filter Communication error - filter tag	<ul style="list-style-type: none"> System could not detect genuine Elkay PRO filter in upper filter position. Ensure Elkay PRO filter is properly installed and power cycle the unit. If error persists, replace with new Elkay PRO filter.
BF06	Lower filter Communication error - NFC board	<ul style="list-style-type: none"> System could not establish connection with lower Filter NFC Board. Ensure filter module cable is securely connected to the "lower" branch of the wiring harness and power cycle the unit. If error persists, replace filter module.
BF07	Upper filter Communication error - NFC board	<ul style="list-style-type: none"> System could not establish connection with upper Filter NFC Board. Ensure filter module cable is securely connected to the "upper" branch of the wiring harness and power cycle the unit. If error persists, replace filter module.
BF09	Endpoint Connection Error	<ul style="list-style-type: none"> Disconnect endpoint board from control board for 30 seconds and reconnect. Verify in programming menu that Product Type is set to "Conn = Yes." If error persists, replace endpoint board and harness.
BF10	Line flush error	<ul style="list-style-type: none"> Confirm water shutoff valve is open and water is flowing to unit. Clear any water line blockage. If running post-install filter flush, retry flush by activating the bottle filler IR sensor. If error persists, power cycle the unit to restart the post-install filter flush.
BF11	Filter position error	<ul style="list-style-type: none"> Verify that a sediment filter is installed in the "upper" filter position, and a contaminant-reduction filter is installed in the "lower" filter position.

Pictured is unit only without bottle filler.

Note: Danger! Electrical shock hazard. Disconnect power before servicing unit.

Uses HFC-134A refrigerant

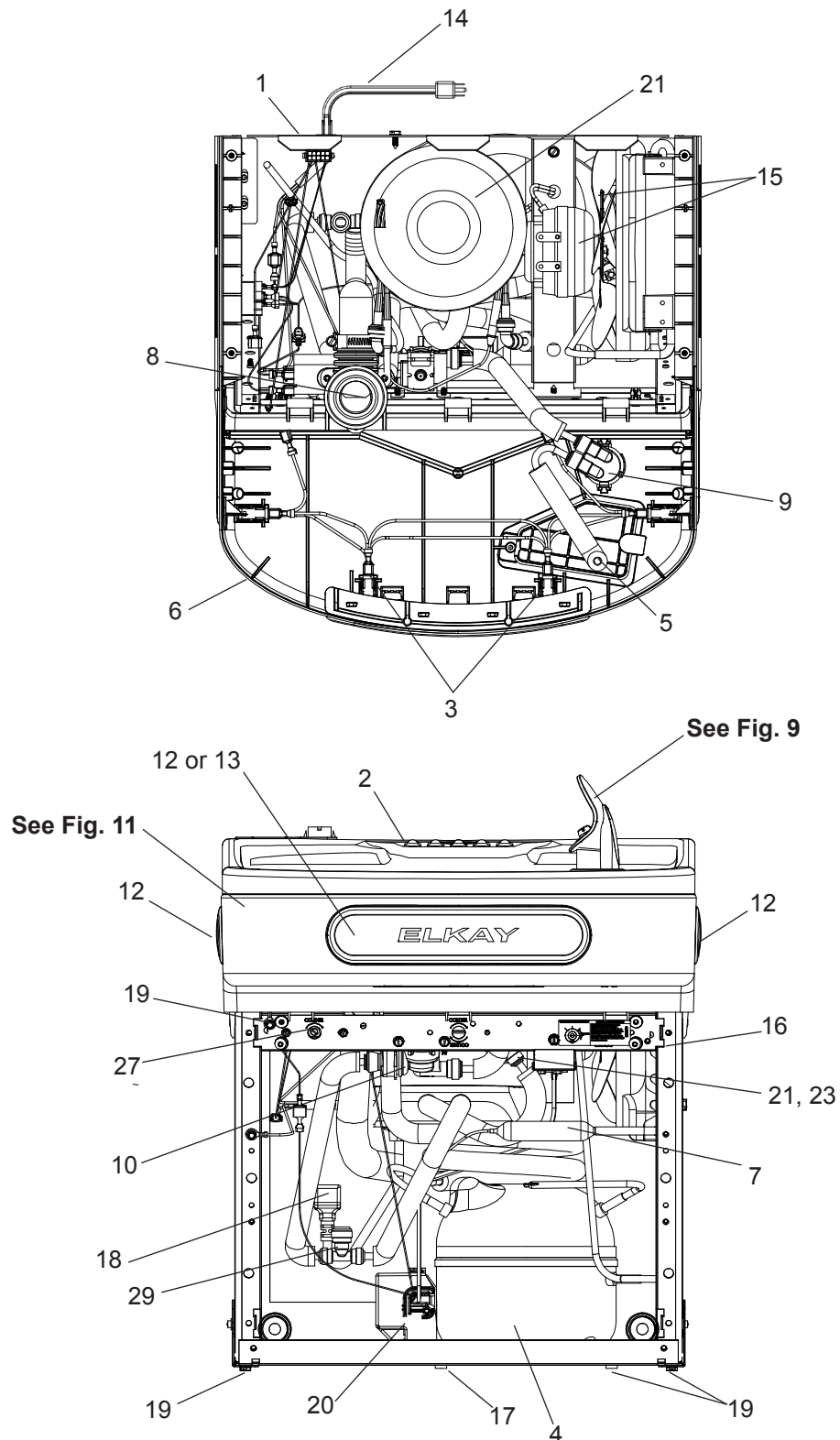


Fig. 13

115V PARTS LIST FOR LZS8WSBPRO			BOTTLE FILLER REPLACEMENT PART KITS FOR LZS8WSBPRO		
ITEM NO.	PART NO.	DESCRIPTION	ITEM NO.	PART NO.	DESCRIPTION
1	28401C	Hanger Bracket	NS	98546C	Kit - Aerator Replacement
2	0000001337	Basin - Stainless Steel	29	98549C	Kit - Hardware & Waterway (BF)
3	36216C	Wiring - Front/Side Push Bar	30	1000004573	Kit - Solenoid 120V (BF)
*4	36322C	Compr - Service Pak 115V EMIS70HHR	31	1000005219	Kit - IR Sensor K+
5	56092C	Tube - Poly (72")	32	2000001912	Kit - Alpha Numeric LED Board
6	2000002074	Assy - Shroud - Upper (Front Side Push)	33	2000001913	Harness - Bottle Filler
7	66703C	Drier	NS = Not Shown		
8	1000001877	Kit - Drain Replacement (Bottle Filler) (Bracket, Tube, Fitting, Clamp)			
9	1000004564	Kit - Regular/Holder/Nut			
10	1000004572	Kit - Solenoid Valve/Regulator Assembly			
11	2000002078	Kit - Flexi Bubbler/"O"-Ring/Nut			
12	2000002076	Kit - Pushbar (Front/Side) EZS TL			
13	2000002078	Kit - Pushbar (Front Only)			
14	1000004568	Power Cord			
15	98775C	Kit - Fan Motor/Blade/Screws/Nut			
16	98776C	Kit - Condenser/Drier/Wire Ties			
17	98777C	Kit - Compr Mtg Hdwe/Grommets/Clips/Studs			
18	98778C	Kit - Heatx/Drier			
19	98898C	Kit - Hardware			
20	0000000238	Kit - 115V Electricals (Relay, Overload, Cover)			
21	98724C	Kit - Evap. Replacement			
22	1000001812	Kit - Bottle Filler Drain			
23	1000001602	Kit - 75583C Elbow 5/16" x 1/4" (3 Pack)			
24	1000004559	Wire Assy - Jumper			
25	2000001914	Harness - Cooler			
26	1000004550	Wire - 6" Jumper			
27	98773C	Kit - Cold Control			
28	2000002222	Snap-In Basin Bushing			
NS	1100000018	Drop Down Wrapper Replacement Kit - Stainless Steel			

NS = Not Shown

***INCLUDES RELAY & OVERLOAD. IF UNDER WARRANTY, REPLACE WITH SAME COMPRESSOR USED IN ORIGINAL ASSEMBLY.**
NOTE: All correspondence pertaining to any of the above water coolers or orders for repair parts MUST include Model No. and Serial No. of cooler, name and part number of replacement part.

8. Frequently Asked Questions (FAQ)

For FAQ questions refer to the Elkay website elkay.com

FCC COMPLIANCE STATEMENT

CAUTION: Changes or modifications not expressly approved could void your authority to use this equipment

This device complies with Part 15 of the FCC Rules. Operation to the following two conditions: (1) This device may not cause harmful interference, and (2) this device must accept any interference received, including interference that may cause undesired operation

INDUSTRY CANADA STATEMENT

This device complies with Industry Canada license-exempt RSS standard(s). Operation is subject to the following two conditions: (1) this device may not cause interference, and (2) this device must accept any interference, including interference that may cause undesired operation of the device.

Le présent appareil est conforme aux CNR d'Industrie Canada applicables aux appareils radio exempts de licence. L'exploitation est autorisée aux deux conditions suivantes : (1) l'appareil ne doit pas produire de brouillage, et (2) l'utilisateur de l'appareil doit accepter tout brouillage radioélectrique subi, même si le brouillage est susceptible d'en compromettre le fonctionnement.



2000002266

FOR PARTS, CONTACT YOUR LOCAL DISTRIBUTOR OR CALL 1.800.834.4816

PRINTED IN U.S.A.

REPAIR SERVICE INFORMATION TOLL FREE NUMBER 1.800.260.6640

ELKAY MANUFACTURING COMPANY • 1333 BUTTERFIELD ROAD SUITE 200 • DOWNERS GROVE, IL 60515 • 630.574.8484 • www.elkay.com