

ELKAY® SPECIFICATIONS

No Lead Drinking Fountain
Fully Recessed Wall Mount
Model EDFB12C

GENERAL

#18 gauge, type 304, nickel bearing stainless steel wall drinking fountain designed to meet all sanitary codes. Unit has embossed bubbler pad and built in stream splitter. Finish is hand blended to a lustrous satin finish.

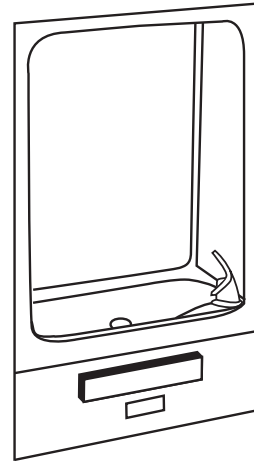
EDFB12C: Furnished complete with Flexi-Guard® safety bubbler, fully assembled front push bar, flow regulator provides constant stream from 20 to 105 psi water pressure, and domed strainer. No trap furnished.

CONSTRUCTION

Exclusive Flexi-Guard® Safety Bubbler: Innovative design utilizes a pliable polyester elastomer to prevent accidental mouth injuries. Flexes on impact, then returns to original position. Strong. Abrasion-resistant. Anti-sweat. Keyed in location to prevent rotation.

ALSO AVAILABLE

MODEL EDFB12FC: Same as above, includes LK109A glass filler.



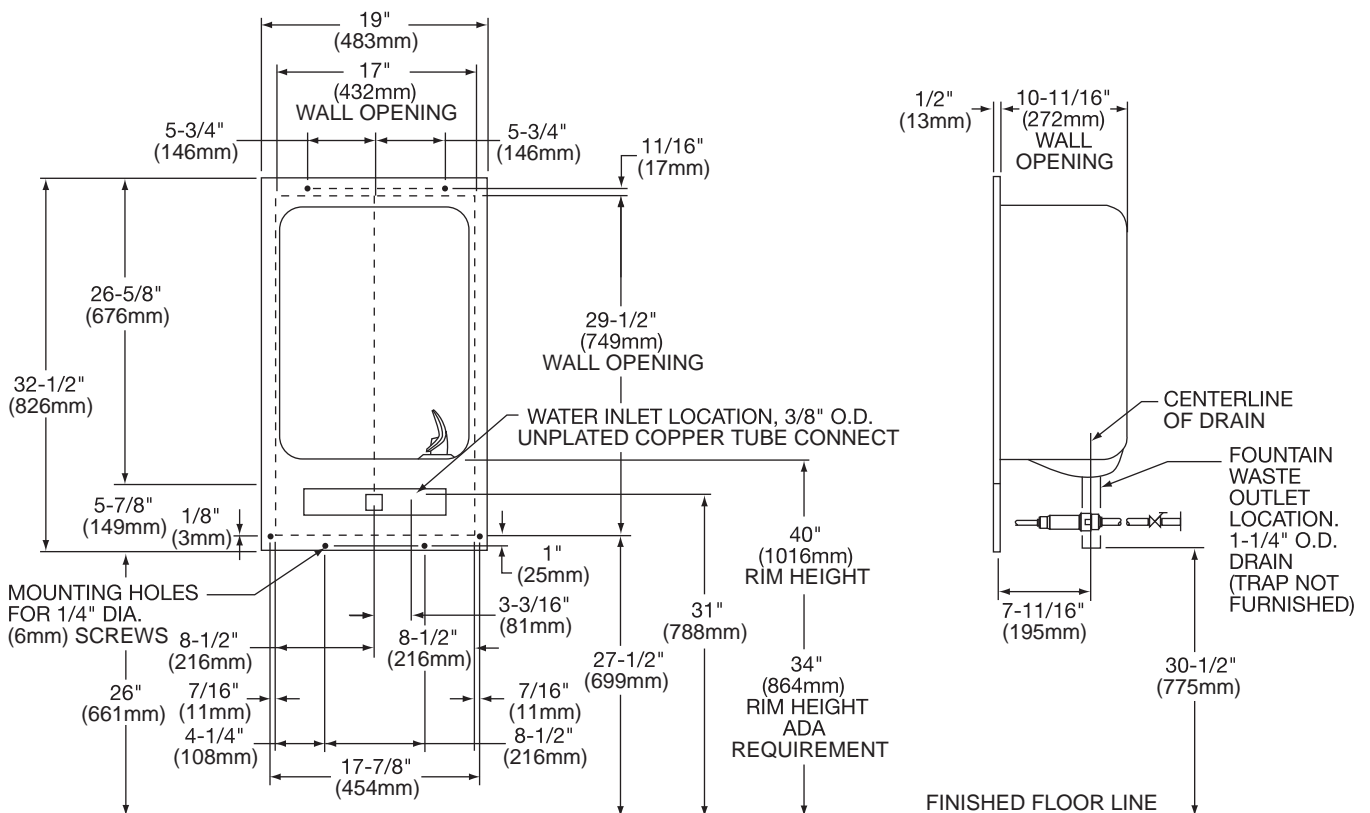
Model EDFB12C

ACCESSORIES

MB24: Mounting Box is available as an optional accessory.

STANDARDS

This fountain is certified by WQA to lead-free compliance including **NSF/ANSI 61 and 372.**



In keeping with our policy of continuing product improvement, Elkay reserves the right to change product specifications without notice.

This specification describes an Elkay product with design, quality and functional benefits to the user. When making a comparison of other producers' offerings, be certain these features are not overlooked.

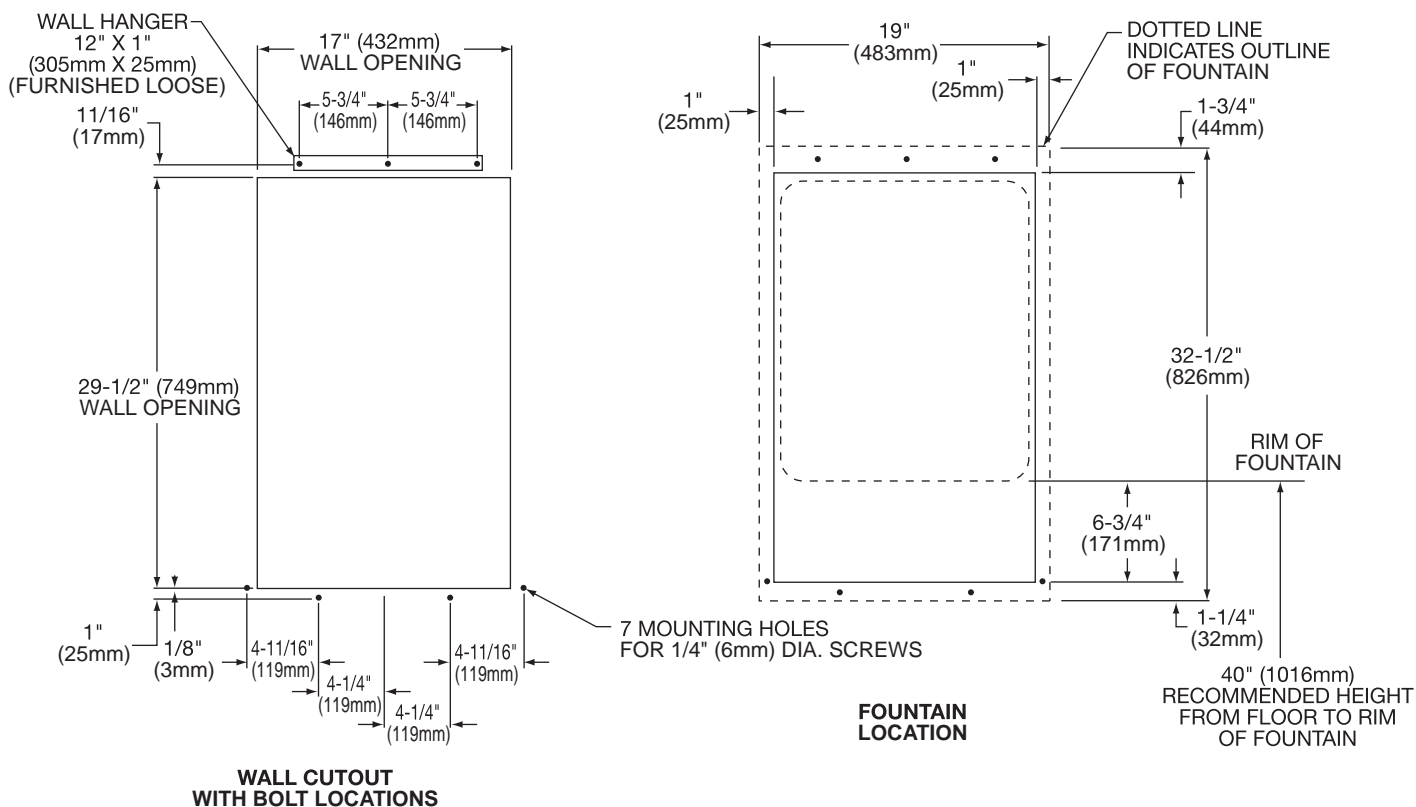
Elkay

elkayusa.com

2222 Camden Court
Oak Brook, IL 60523

Printed in U.S.A.
©2013 Elkay

(Rev. 7/13) 14-5H



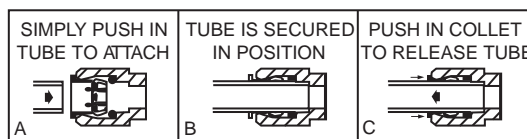
INSTALLATION INSTRUCTIONS

1. Remove lower panel from drinking fountain by removing the two screws at the lower corners. Rotate the bottom of the panel out and pull gently downward to remove.
2. Water inlet tube to be 3/8" O.D. Waste tailpiece for slip trap is 1-1/4" O.D. Contractor to supply waste trap in accordance with local codes.
3. Connecting lines to be copper and thoroughly flushed to remove all foreign matter before connection to fountain assembly. The furnished strainer should be installed in the supply line.
4. Connect the fountain to supply line with a shut off valve and install a 3/8" (10mm) water line between the valve and fountain. Connect the 3/8 line to the inlet of the strainer by loosening the retaining nut and inserting the tubing past the o-rings (approximately 3/4"). Finger tighten nut to lock tubing in place.
5. Stream height is factory set at 35 psi. If supply pressure varies greatly from this, turn adjustment screw on regulator. Clockwise adjustment will raise the stream and counter-clockwise adjustment will lower the stream. For best adjustments, stream should hit the basin 6-1/2" (165mm) from the bubbler.

ACTUATION OF QUICK CONNECT WATER FITTINGS

Fountain is provided with lead free connectors which utilize an o-ring water seal. To remove tubing from the fitting, relieve water pressure, push in on gray collar while pulling on the tubing. To insert tubing, push tube straight into the fitting until it reaches a positive stop (approximately 3/4" [19mm]). See Fig. 1.

OPERATION OF QUICK CONNECT FITTINGS



PUSHING TUBE IN BEFORE PULLING IT OUT HELPS TO RELEASE TUBE

FIG. 1

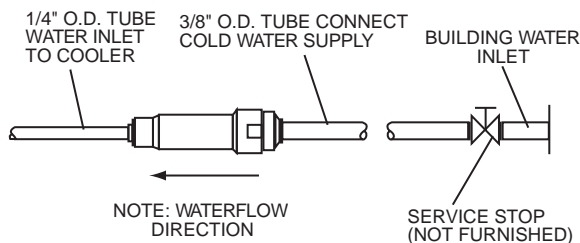


FIG. 2