

FEATURES & BENEFITS

CONSTRUCTION

Barrier-free design with an 18-gauge Type 304 satin finished stainless steel swirl bowl assembly mounted on a 14-gauge Type 304 stainless steel wall bracket. Unit includes an in-wall mounting frame, and front panel access for P-trap and stop.

VANDAL RESISTANT

The bubbler head, push buttons, round bowl, drain strainer and bottom plates are locked in place, discouraging unwanted vandal tampering.

BUBBLER HEAD

Polished chrome-plated brass bubbler head with integral laminar flow prevents splashing while providing a superior flow pattern. The integral 11/16" dia. basin shank and stainless anti-rotation roll pin for vandal resistance strength. Shielded, angled stream opening provides a steady source of drinking water at .45 gpm.

FOUNTAIN VALVES

The push-button activated valves offer the only all stainless steel valve body that is machined out of solid bar stock, is fully serviceable through the front of the push button assembly offering access to the water control cartridge and integral water supply strainer, and with front access to the water stream height adjustment for easy maintenance without having to remove the valve. Operating pressure range of 30 to 90 psi (2.1 to 6.2 bar).

BOTTLE FILLER

Vandal-resistant, 14-gauge Type 304 stainless steel bottle filler housing with push button operation and 1 gpm (3.78L) laminar flow.

MOUNTING

Galvanized frame and 10 gauge surface plate provide the maximum mounting strength for the single bubbler drinking fountain, and a 3/16" (.47 cm) thick steel mounting plate for bottle filler.



SPECIFICATIONS

Model 1001MSP ADA wall-mounted vandal-resistant drinking fountain and bottle filler shall include an 18-gauge Type 304 Stainless Steel satin finish basin with integral swirl design, 14 gauge Type 304 Stainless Steel wall bracket and bottle filler bracket, 3/16" (.47 cm) thick steel mounting plate for bottle filler, in-wall mounting frame with lower access panel allowing for front access of P-trap and stop, 100% lead-free waterways, vandal-resistant push-button operated stainless steel valves with front-accessible cartridge and flow adjustment, polished chrome-plated brass vandal resistant bubbler head with integral laminar anti-squirt flow, 1gpm (3.78L) laminar flow bottle filler, chrome-plated brass vandal-resistant waste strainer, stainless steel satin finish back panels, and 1-1/4" O.D. (3.2 cm) waste pipe. In extreme environments related to heat and cold, product(s) must be protected from damage/exposure due to these extreme conditions.

APPLICATIONS

Perfect for either public or private indoor/outdoor settings, model 1001MSP is a great fit in areas where aesthetics are important to the overall appeal of the architecture. This series is precisely mounted, making it a nice addition to any surrounding. Beautiful satin finish helps to maintain the fountains overall appeal so it always remains looking as new as it did when it was installed. Specifically, this type of wall mounted drinking fountain may be placed in settings such as: schools and other locations in and around office buildings where the temperature remains above freezing. Model meets all current Federal Regulations for the disabled including those in the Americans with Disabilities Act. Haws manufactures drinking fountains, faucets and electric water coolers to be lead-free by all known definitions including NSF/ANSI/CAN 61- Section 9, NSF/ANSI/CAN 372, California Proposition 65, and the Federal Safe Drinking Water Act. Product is compliant to California Health and Safety Code 116875 (AB 1953-2006), and 116876 (AB 100) "NSF/ANSI/CAN 61: Q ≤ 1".

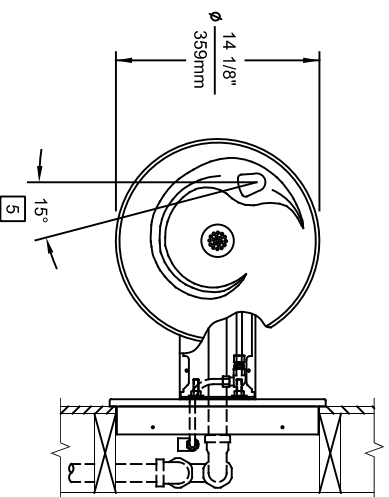


OPTIONS

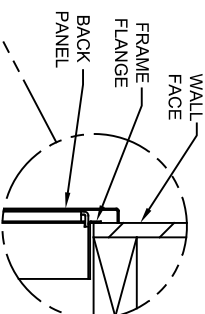
- Water Filter: Model 6480 filter kit with 3000 gallon carbon block filter, filter head, and mounting bracket.
- Mounting Plate: Model 6700R, on-wall mounting plate for model 1920HPS.
- Remote Drinking Fountain Water Chiller: Model HCR8, 8 gph (30.3 L) remote water chiller provides instantaneous cooling to meet a continuous demand for chilled water.


For more information, visit www.hawscow.com or call (888) 640-4297.

-
- Technical drawing of the back panel of the 1000 Series Single-Door Lock, showing dimensions and components. The drawing includes the following dimensions and labels:
- Overall Width:** 15"
 - Top Section Width:** 381mm
 - Top Section Depth:** 14 1/8"
 - Top Section Rough-In:** 359mm
 - Top Section Label:** BACK PANEL (SUPPLIED)
 - Top Section Mounting:** 15 5/8" and 397mm
 - Top Section Rough-In:** 18 3/16" and 462mm
 - Bottom Section Width:** 1 3/4" and 44mm
 - Bottom Section Mounting:** 18" and 457mm
 - Bottom Section Rough-In:** 16 5/8" and 422mm
 - Bottom Section Label:** ACCESS PANEL (SUPPLIED)



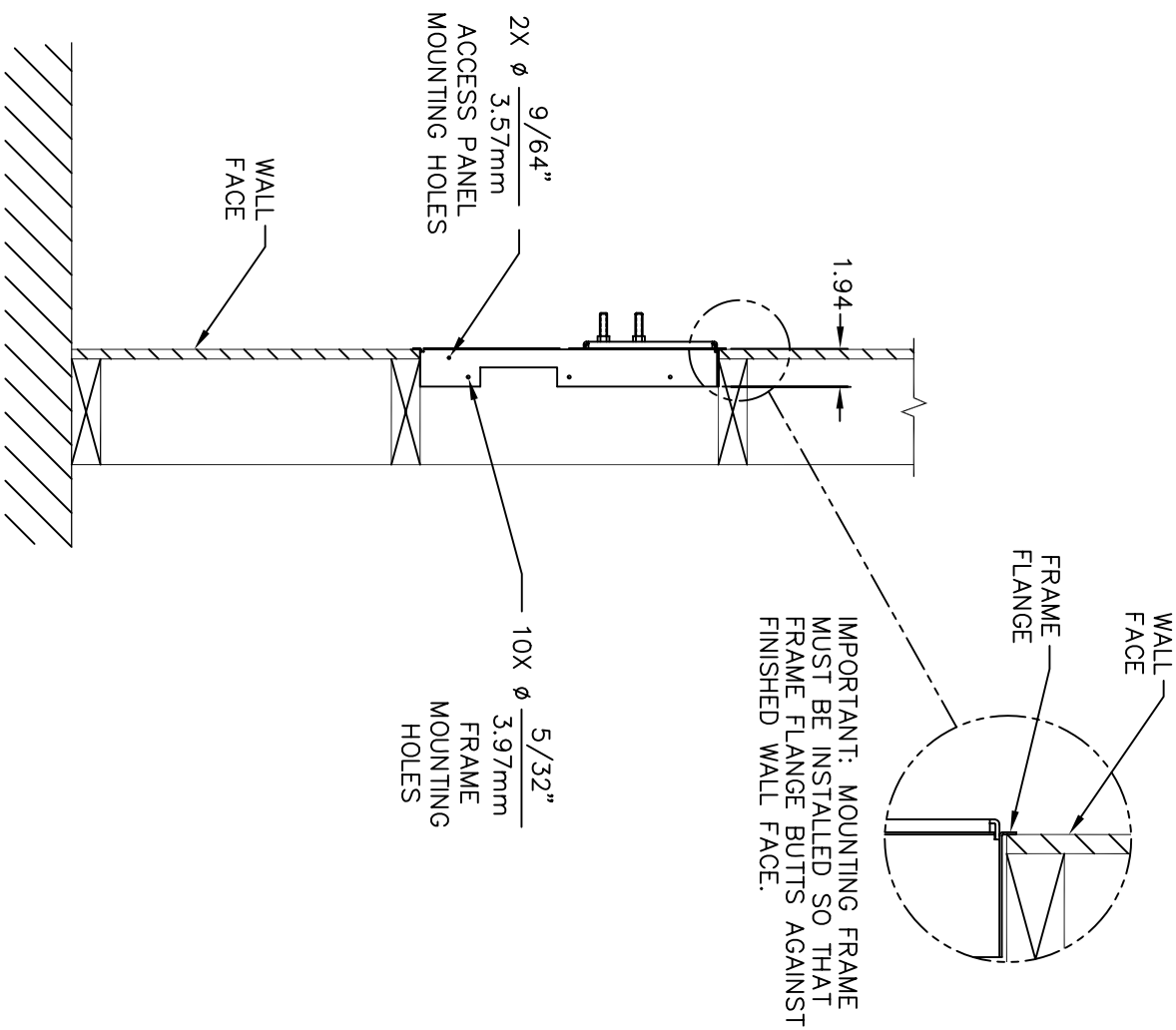
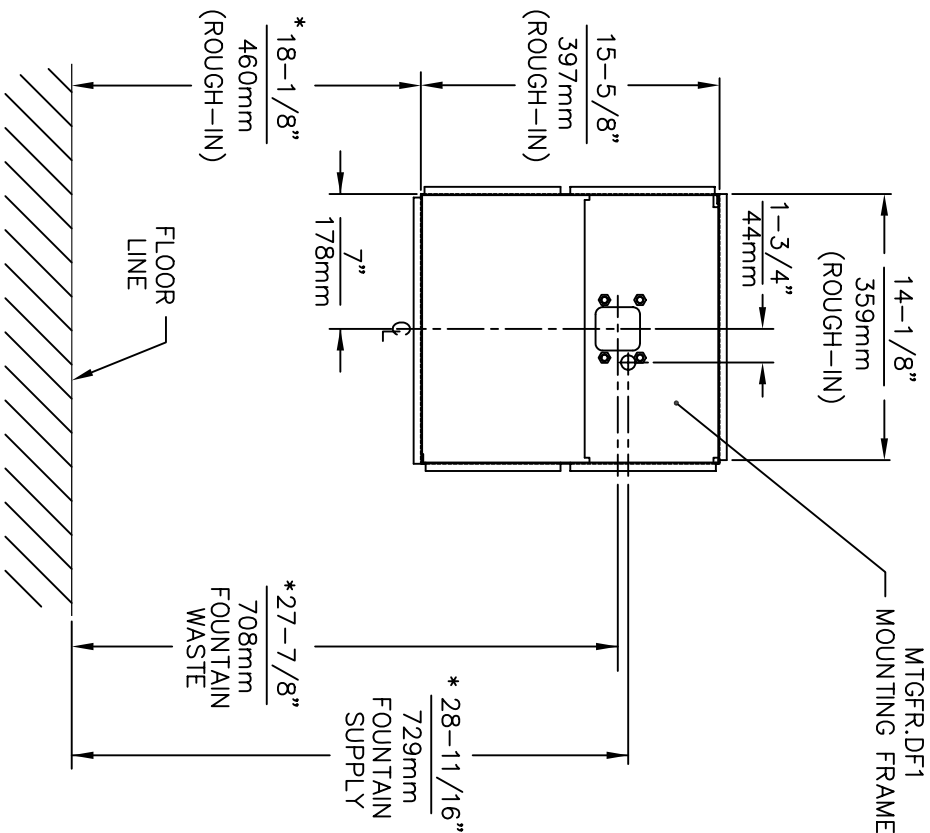
IMPORTANT: MOUNTING FRAME MUST BE INSTALLED SO THAT FRAME FLANGE BUTTS AGAINST FINISHED WALL FACE.



| | | | |
|---|--|--|--|
|  | | 1455 KLEPPE LANE SPARKS, NEVADA 89431 (775) 359-4712 FAX (775) 359-4424 E-MAIL: HAWCO@HAWSCO.COM WEBSITE: WWW.HAWSCO.COM | |
| ECN NO. 8003 ECN. 8003 DATE: 08/02/99 CHK'D: JSLP DATE: 04/29/04 SCALE: 1:14 DRAWING TYPE: 1001MS INSTALLATION: SIZE: A SHEET 1 OF 1 REVISION: 12 | | MODEL(S) 1001MS PART NUMBER 0002076510.D | |

HOLD ROUGH-IN DIMENSIONS $\pm 1/8"$ (3.2mm).

* WHEN INSTALLING THIS UNIT, LOCAL, STATE, OR
FEDERAL CODES SHOULD BE ADHERED TO. FOR
INSTALLATION HEIGHTS OTHER THAN SHOWN,
DIMENSIONS MARKED (*) MUST BE ADJUSTED
ACCORDINGLY.



FOR USE WITH MODELS:
1000, 1001 & 1001HPS

Haws Corporation

INFO FAX : 1-888-FAX-HAWS (1-888-329-4297)

1455 Kieppe Ln, Sparks NY 13843

Phone: 775-359-4712 Fax: 775-359-7424

Haws AG, Bachweg 3 CH-3401 Burgdorf Switzerland

Haws Pte Ltd 74 Sungai Kodut Loop Singapore 729531

e-mail: Haws@hawsco.com website: www.hawsco.com

| | | | | | |
|----------|----------|------|----|------|------|
| FOR NO. | REVISION | DATE | BY | CHKD | DATE |
| ECN 4173 | 07/97 | | | | |

MODEL(S): MTGFR.DF1

INFO FAX DOC # 2MTGFR.DF1

SCALE: 1/16" DRAWING TYPE: INSTALLATION/FABRICK

CO 0296 13160000 15

SIZE: A 1 of 1

1920 INDEX

| INSTALLATION WITH: | TYPICAL USES | SEE SHEET... |
|-----------------------|---|-----------------|
| 1001/1011 BOWLS | HAWS SERIES 1001, H1001.8X, 1011, 1011.8X STYLE FOUNTAINS | 3 OF 9 |
| 1109/1119 BOWLS | | 4 OF 9 |
| 1107/1117 BOWLS | | 5 OF 9 |
| 1311/1501 BOWLS | | 6 OF 9 |
| 1047 | | 7 OF 9 |
| 6468 | | 8 OF 9 |
| CHILD HEIGHT | HAWS 1107P STD CONFIG CHILD HEIGHT, 1109P STD CONFIG CHILD HEIGHT, 1311P STD CONFIG CHILD HEIGHT | 9 OF 9 |



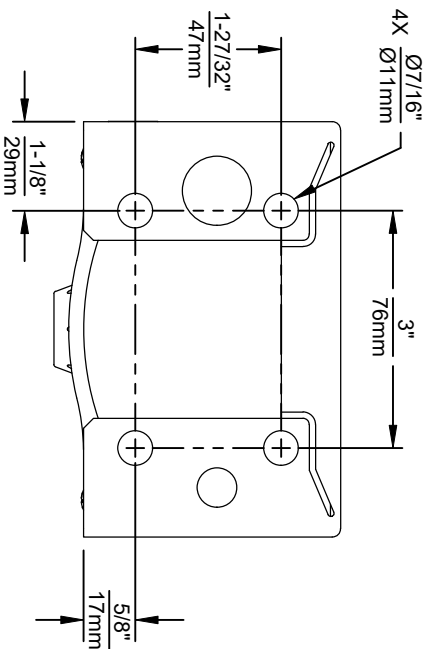
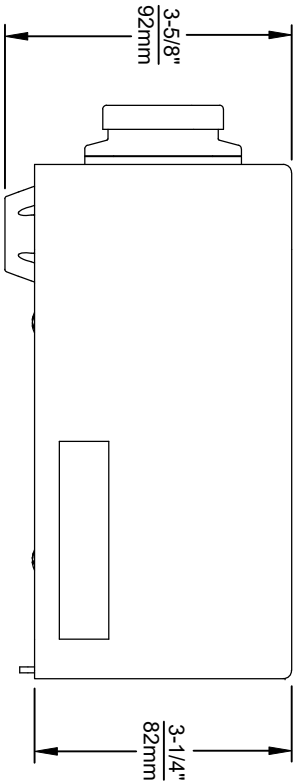
1455 KLEPPE LANE
SPARKS, NEVADA 89431
(775) 359-4712 FAX (775) 359-7424
E-MAIL: HAWS@HAWSCO.COM
WEBSITE: WWW.HAWSCO.COM

ECN NO. REVISED PER BY: J.G.
DRAWN BY: DATE: CHK'D: J.G.
APPROVED: DATE: 11/2/24

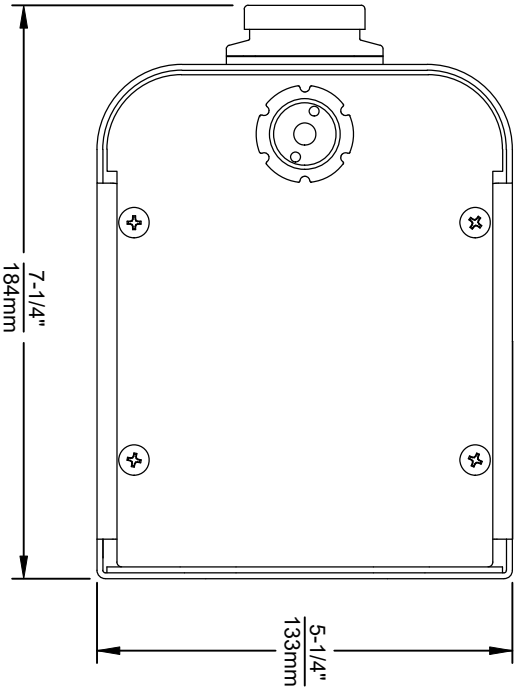
MODEL(S)
1920/1920HPS/1920W

PART NUMBER
0510000490.D
REVISION
13

SCALE: N/A DRAWING TYPE: INSTALLATION SIZE: A SHEET 1 OF 9

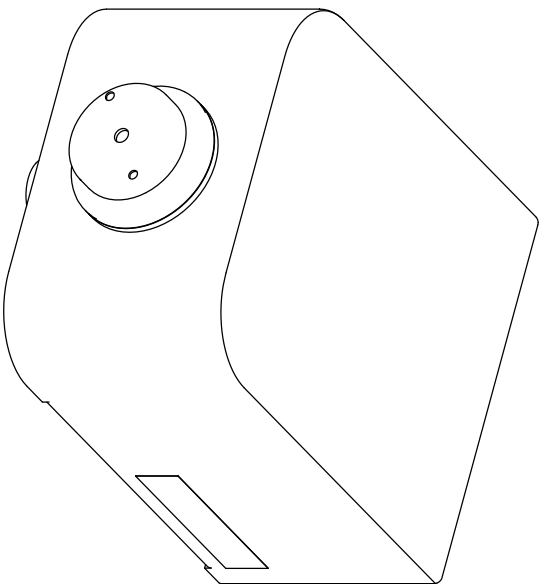


1920 SERIES MOUNTING HOLE LOCATIONS
(3/8"-16 UNC MOUNTING HARDWARE NOT SUPPLIED)



NOTES:

1. SEE SHEETS 2 THRU 7 FOR BOTTLE FILLER ADULT ADA HEIGHT APPLICATIONS AND SHEET 8 FOR CHILD ADA HEIGHT APPLICATIONS.
2. WHEN INSTALLING THIS UNIT, LOCAL, STATE OR FEDERAL CODES SHOULD BE ADHERED TO FOR INSTALLATION LOCATIONS, WASTE & SUPPLY REQUIREMENTS OTHER THAN SHOWN.

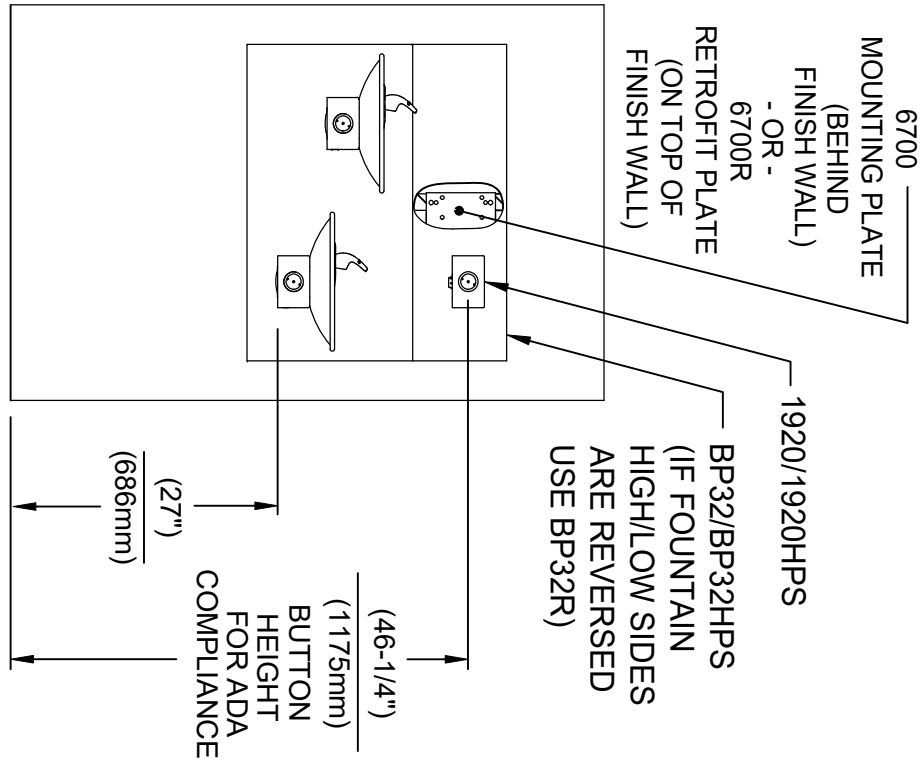




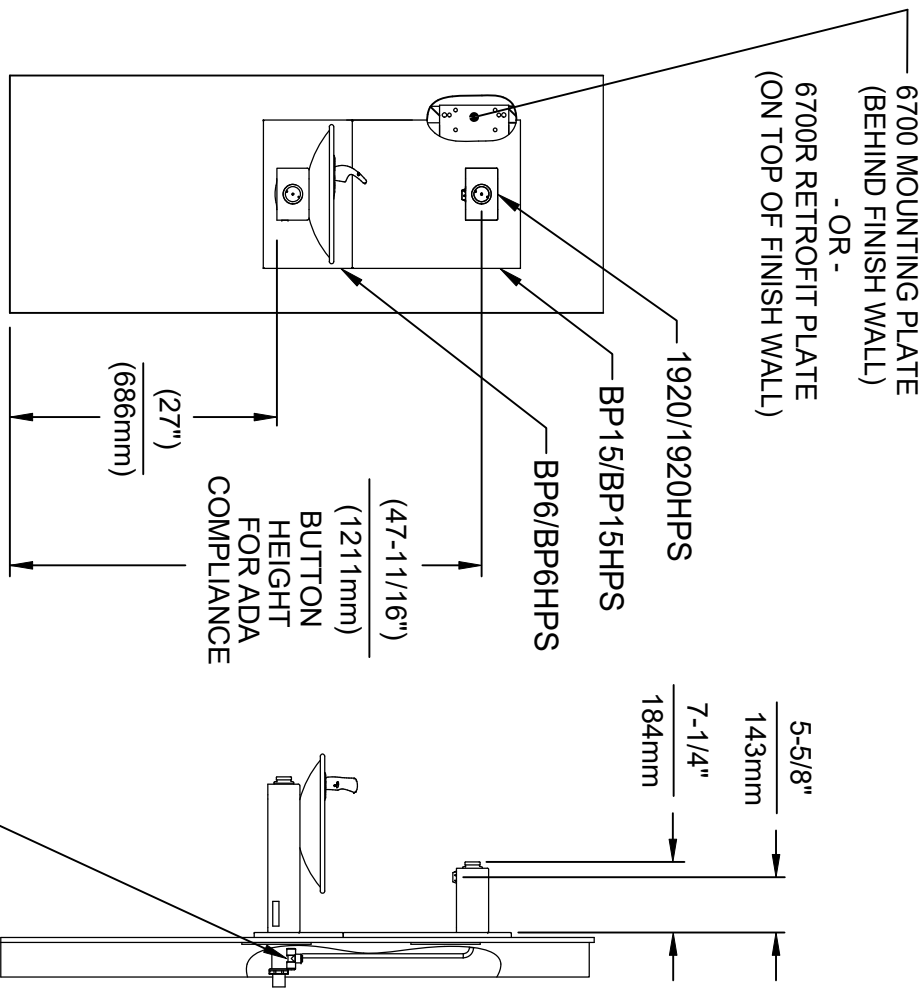
Haws
Since 1906

1455 KLEPPE LANE
SPARKS, NEVADA 89431
(775) 359-4712 FAX (775) 359-7424
E-MAIL: HAWS@HAWS.CO.COM
WEBSITE: WWW.HAWS.CO.COM

| | | | |
|-----------|-----------------|--------------------|----------------------------|
| ECN NO. | REVISED PER BY: | MODEL(S) | PART NUMBER |
| 5041 | ECN 6131 J.G. | 1920/1920HPS/1920W | 0510000490.D |
| DRAWN | DATE | CHKD | REVISION |
| 1855/6 | J.G. | | 13 |
| APPROVED: | DATE | SCALE: N/A | DRAWING TYPE: INSTALLATION |
| RH | 11/2/24 | SIZE: A | SHEET 2 OF 9 |



INSTALLATION ABOVE HAWS 1011 & H1011.8 SERIES

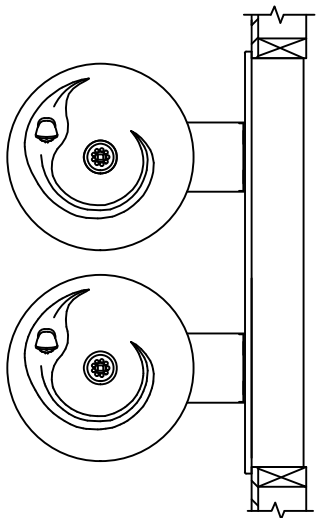


INSTALLATION ABOVE HAWS 1001 & H1001.8 SERIES


* IF YOUR FOUNTAIN IS THIS STYLE USE THESE DIMENSIONS

1. SEE SEPARATE INSTALLATION DRAWINGS FOR MOUNTING PLATES AND BACK PANELS (SHOWN FOR REFERENCE - NOT SUPPLIED).

2. WHEN INSTALLING THIS UNIT, LOCAL, STATE OR FEDERAL CODES SHOULD BE ADHERED TO FOR INSTALLATION LOCATIONS, WASTE & SUPPLY REQUIREMENTS OTHER THAN SHOWN.



3/8" O.D. SUPPLY TUBING AND 3/8" O.D. PUSH-IN TEE SUPPLIED. (CONNECT TO FOUNTAIN SUPPLY LINE)

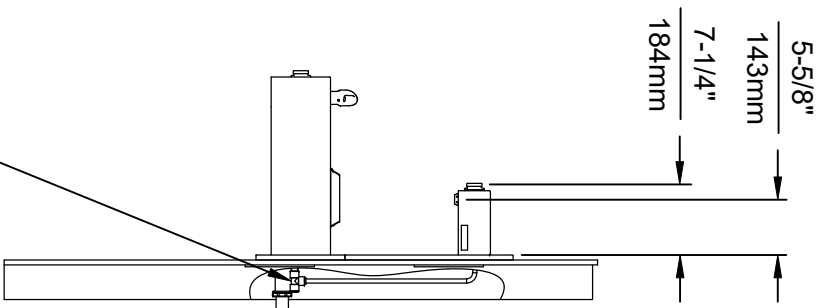
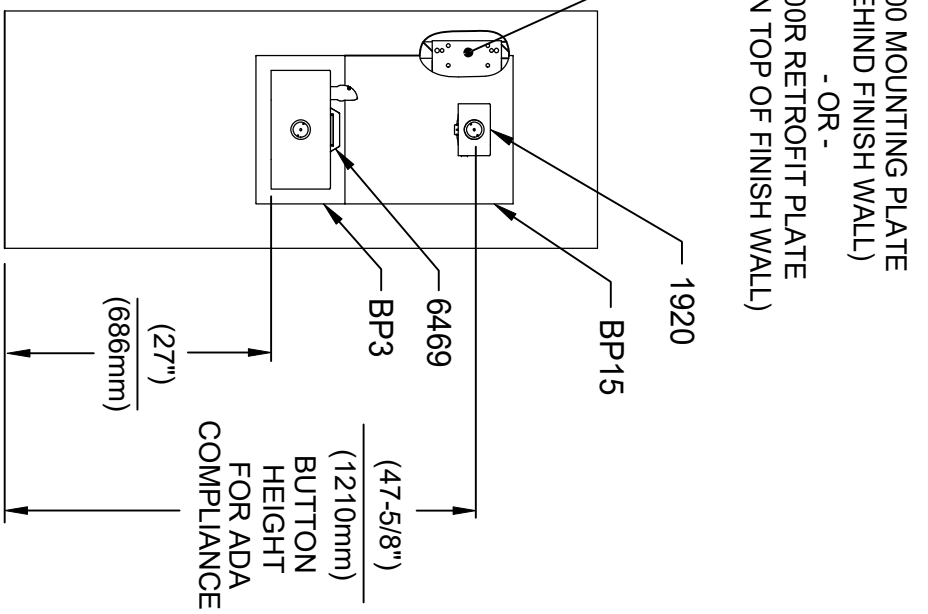
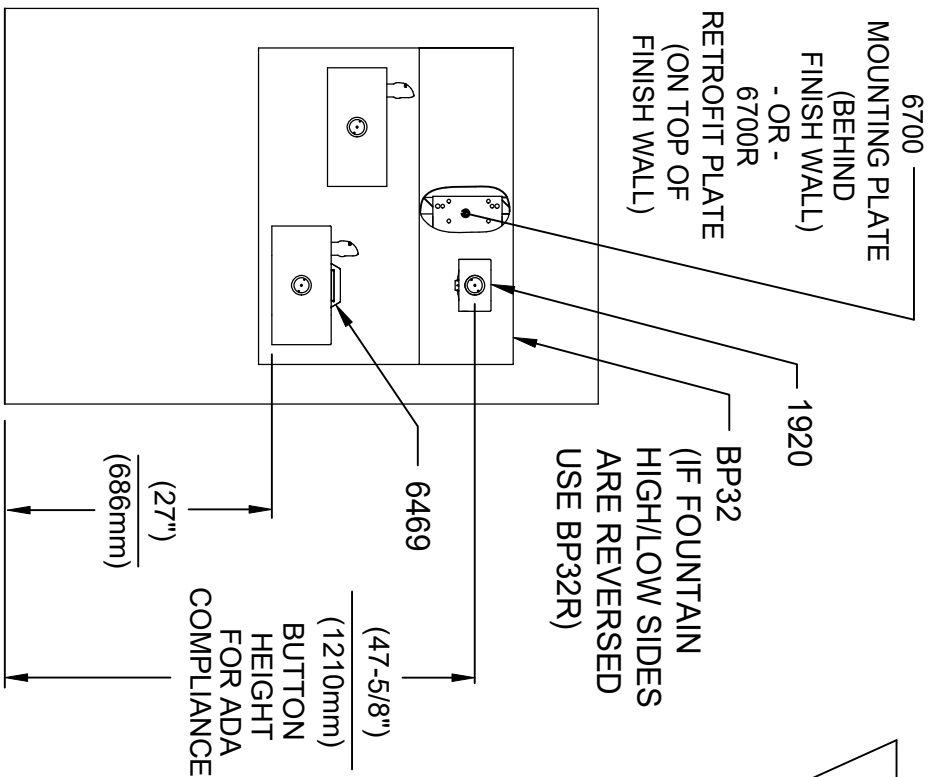


Haws
Since 1906

| | |
|--------------------------|--|
| ECN NO. REVISED PER BY: | MODEL(S) |
| 5081 EGN 6131 J.G. | 1920/1920HPS/1920W |
| DRAWN: DATE: CHK'D: J.G. | |
| APPROVED: DATE: 11/29/24 | |
| RH | SCALE: N/A DRAWING TYPE: INSTALLATION SIZE: A SHEET 3 OF 9 |

1455 KLEPPE LANE
SPARKS, NEVADA 89431
(775) 359-4712 FAX (775) 359-7424
E-MAIL: HAWS@HAWS.CO.COM
WEBSITE: WWW.HAWS.CO.COM

PART NUMBER: 0510000490.D
REVISION: 13

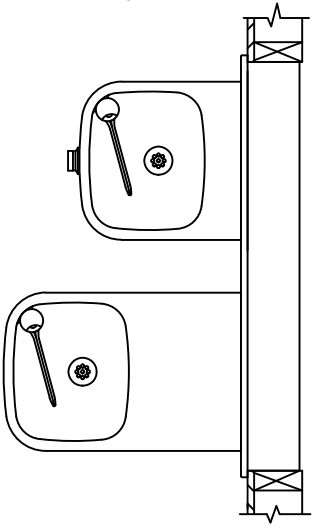



INSTALLATION ABOVE HAWES 1119 & H1119.8 SERIES

**INSTALLATION ABOVE HAWES 1109 & H1109.8 SERIES
SEE SHEET 8 FOR INSTALLATION AT CHILD HEIGHT**

* IF YOUR FOUNTAIN IS THIS STYLE USE
THESE DIMENSIONS

1. SEE SEPARATE INSTALLATION DRAWINGS
FOR MOUNTING PLATES AND BACK PANELS
(SHOWN FOR REFERENCE - NOT SUPPLIED).
2. WHEN INSTALLING THIS UNIT, LOCAL,
STATE OR FEDERAL CODES SHOULD
BE ADHERED TO FOR INSTALLATION
LOCATIONS, WASTE & SUPPLY
REQUIREMENTS OTHER THAN SHOWN.





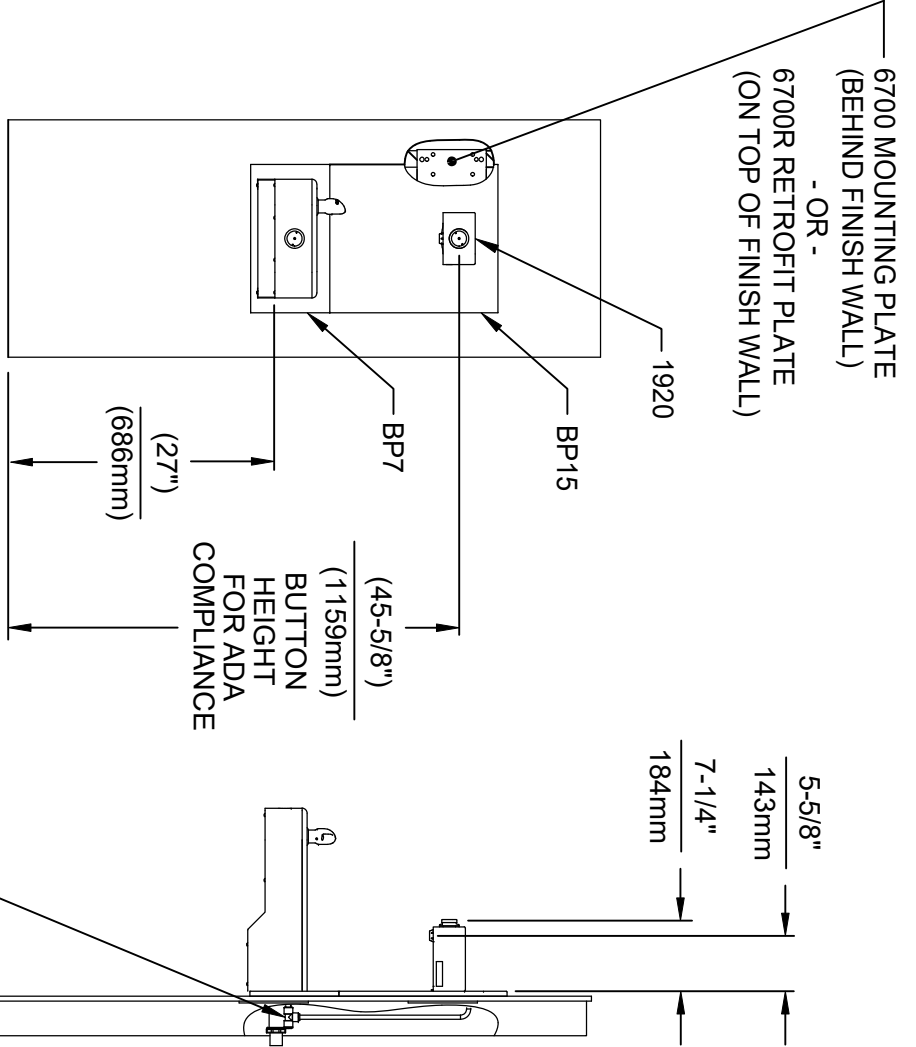
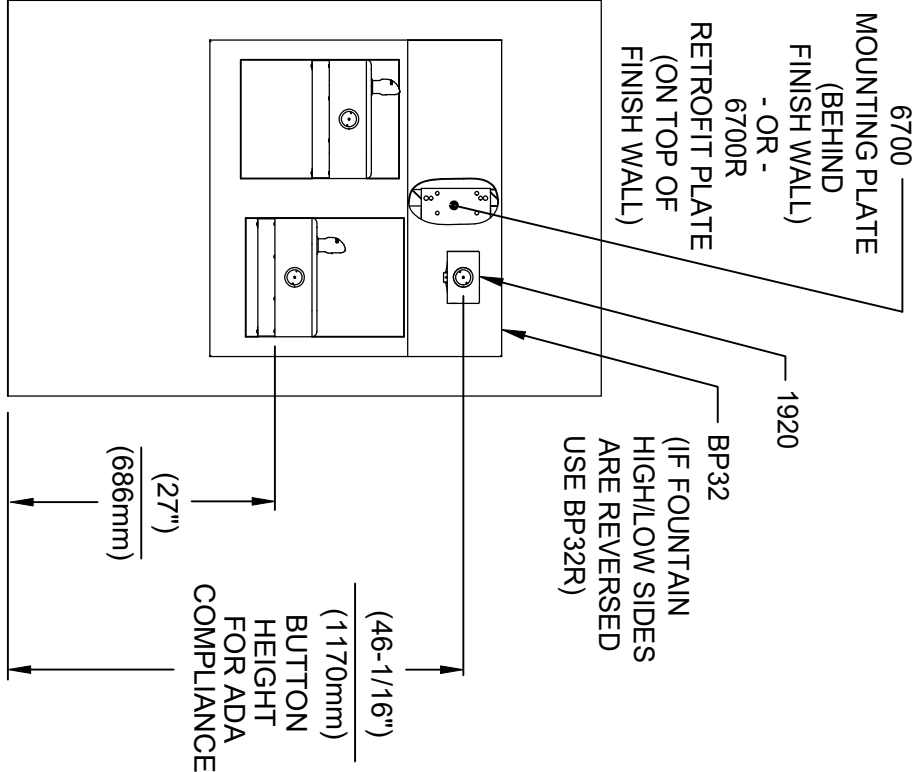
HAWES
Since 1906

1455 KLEPPE LANE
SPARKS, NEVADA 89431
(775) 359-4712 FAX (775) 359-7424
E-MAIL: HAWES@HAWESCO.COM
WEBSITE: WWW.HAWESCO.COM

ECN NO. REVISED PER BY: J.G.
DATE: 01/01/17
DRAWN: J.G.
APPROVED: J.G.
SCALE: N/A
DRAWING TYPE: INSTALLATION
SIZE: A
SHEET 4 OF 9

MODEL(S)
1920/1920HPS/1920W

PART NUMBER
0510000490.D
REVISION
13



INSTALLATION ABOVE HAWS 1117L & H1117.8 SERIES

**INSTALLATION ABOVE HAWS 1107L & H1107.8 SERIES
SEE SHEET 8 FOR INSTALLATION AT CHILD HEIGHT**

* IF YOUR FOUNTAIN IS THIS STYLE USE THESE DIMENSIONS

1. SEE SEPARATE INSTALLATION DRAWINGS FOR MOUNTING PLATES AND BACK PANELS (SHOWN FOR REFERENCE - NOT SUPPLIED).
2. WHEN INSTALLING THIS UNIT, LOCAL, STATE OR FEDERAL CODES SHOULD BE ADHERED TO FOR INSTALLATION REQUIREMENTS, WASTE & SUPPLY REQUIREMENTS OTHER THAN SHOWN.



3/8" O.D. SUPPLY TUBING AND 3/8" O.D. PUSH-IN TEE SUPPLIED. (CONNECT TO FOUNTAIN SUPPLY LINE)

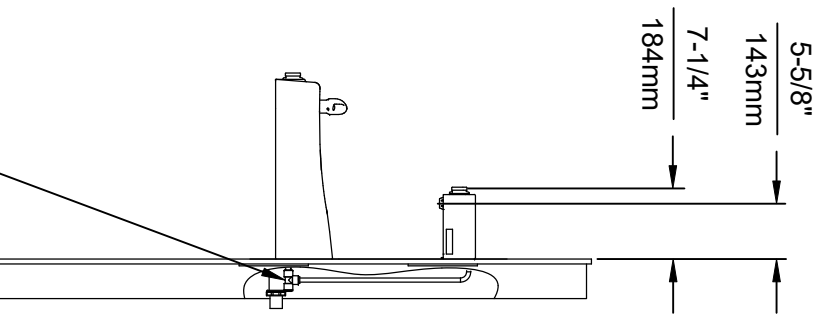
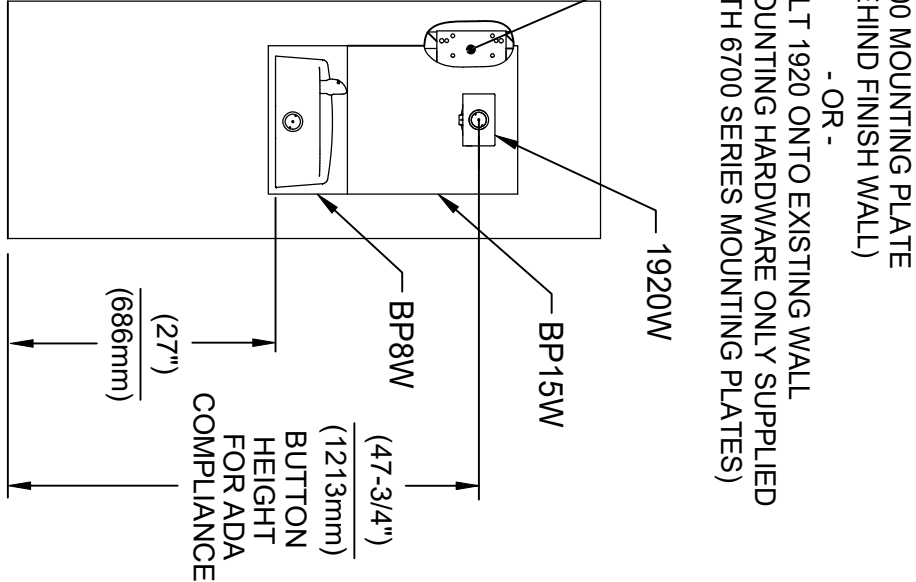
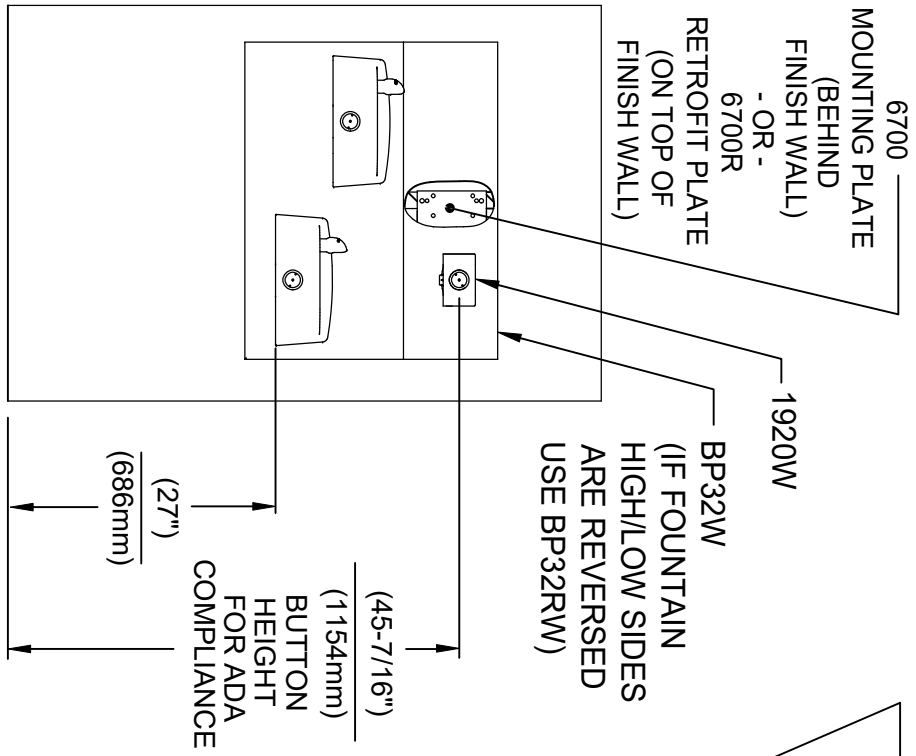


Haws
Since 1906

1455 KLEPPE LANE
SPARKS, NEVADA 89431
(775) 359-4712 FAX (775) 359-7424
E-MAIL: HAWS@HAWS.CO.COM
WEBSITE: WWW.HAWS.CO.COM

ECN NO. REVISED PER BY: J.G.
DATE: 01/01/17
DRAWN: J.G.
APPROVED: J.G.
SCALE: N/A
DRAWING TYPE: INSTALLATION
SIZE: A
SHEET 5 OF 9

MODEL(S)
1920/1920HPS/1920W
PART NUMBER
0510000490.D
REVISION
13

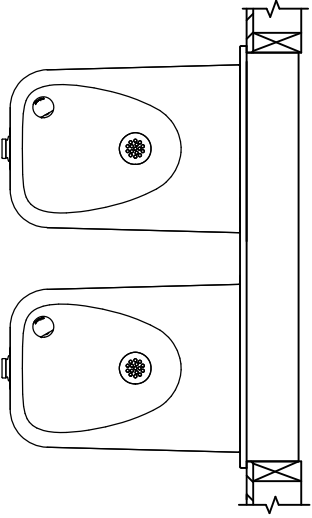



INSTALLATION ABOVE HAWS 1501

**INSTALLATION ABOVE HAWS 1311
SEE SHEET 8 FOR INSTALLATION AT CHILD HEIGHT**

* IF YOUR FOUNTAIN IS THIS STYLE USE
THESE DIMENSIONS

1. SEE SEPARATE INSTALLATION DRAWINGS
FOR MOUNTING PLATES AND BACK PANELS
(SHOWN FOR REFERENCE - NOT SUPPLIED).
2. WHEN INSTALLING THIS UNIT, LOCAL,
STATE OR FEDERAL CODES SHOULD
BE ADHERED TO FOR INSTALLATION
LOCATIONS, WASTE & SUPPLY
REQUIREMENTS OTHER THAN SHOWN.





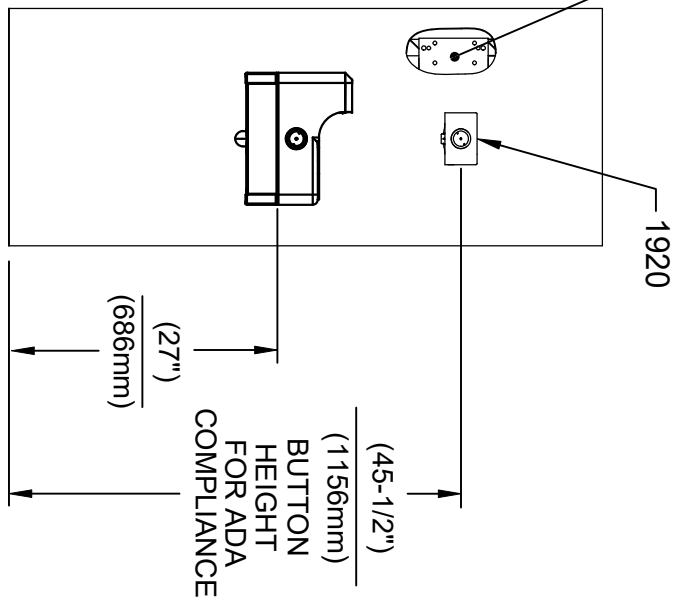
Haws
Since 1906

1455 KLEPE LANE
SPARKS, NEVADA 89431
(775) 359-4712 FAX (775) 359-7424
E-MAIL: HAWS@HAWS.CO.COM
WEBSITE: WWW.HAWS.CO.COM

| | | | |
|----------|-------------|--------------|--------------|
| ECN NO. | REVISED PER | BY | MODEL(S) |
| 5081 | ECN 6131 | J.G. | |
| DRAWN | DATE | CHKD | |
| W | 02/25/17 | J.G. | |
| APPROVED | DATE | | |
| RH | 11/29/24 | | |
| SCALE | N/A | DRAWING TYPE | INSTALLATION |
| SIZE | A | SHEET | 6 OF 9 |

PART NUMBER
0510000490.D
REVISION
13

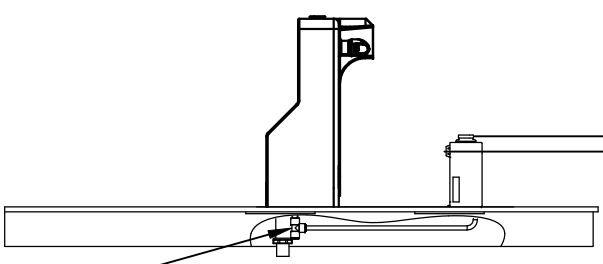
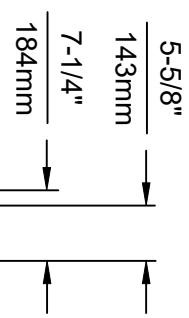
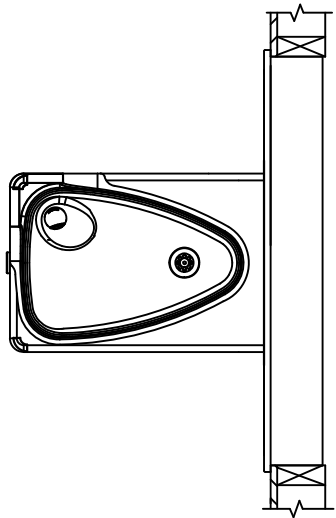
6700 MOUNTING PLATE
(BEHIND FINISH WALL)
- OR -
BOLT 1920 ONTO EXISTING WALL
(MOUNTING HARDWARE ONLY SUPPLIED
WITH 6700 SERIES MOUNTING PLATES)




INSTALLATION ABOVE HAWS 1047

* IF YOUR FOUNTAIN IS THIS STYLE USE
THESE DIMENSIONS

1. SEE SEPARATE INSTALLATION DRAWINGS
FOR MOUNTING PLATES AND BACK PANELS
(SHOWN FOR REFERENCE - NOT SUPPLIED).
2. WHEN INSTALLING THIS UNIT, LOCAL,
STATE OR FEDERAL CODES SHOULD
BE ADHERED TO FOR INSTALLATION
LOCATIONS, WASTE & SUPPLY
REQUIREMENTS OTHER THAN SHOWN.



3/8" O.D. SUPPLY
TUBING AND 3/8" O.D.
PUSH-IN TEE SUPPLIED.
(CONNECT TO FOUNTAIN
SUPPLY LINE)



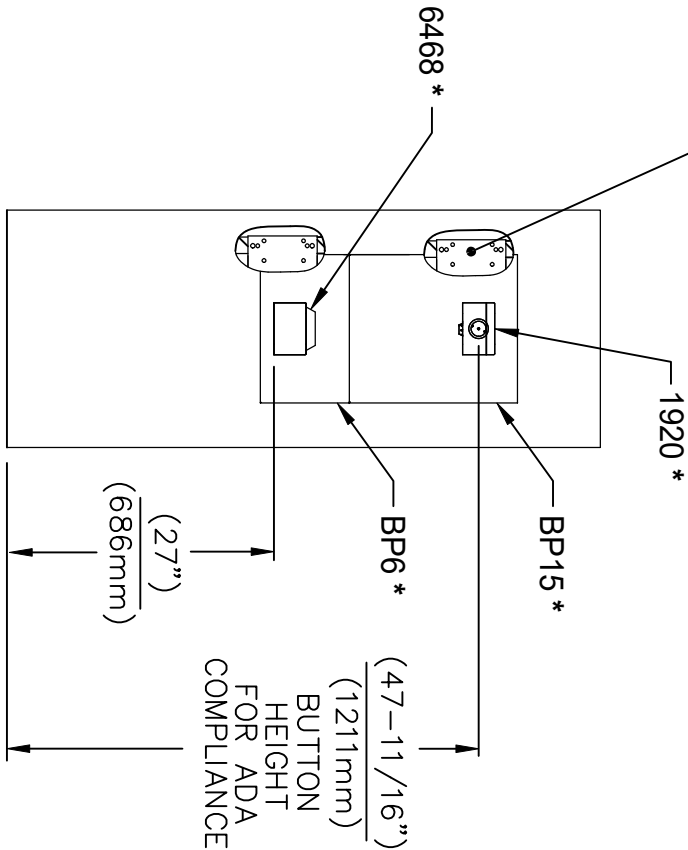
Haws
Since 1906

1455 KLEPE LANE
SPARKS, NEVADA 89431
(775) 359-4712 FAX (775) 359-7424
E-MAIL: HAWS@HAWS.CO.COM
WEBSITE: WWW.HAWS.CO.COM

| | | | |
|-----------|----------------|--------------------|----------------------------|
| ECN NO. | REVISED PER BY | MODEL(S) | PART NUMBER |
| 5220 | ECN 6131 J.G. | 1920/1920HPS/1920W | 0510000490.D |
| DRW P | DATE | CHG | REVISION |
| RH | 11/29/24 | J.G. | 13 |
| APPROVED: | DATE | SCALE: N/A | DRAWING TYPE: INSTALLATION |
| | | SIZE: A | SHEET 7 OF 9 |

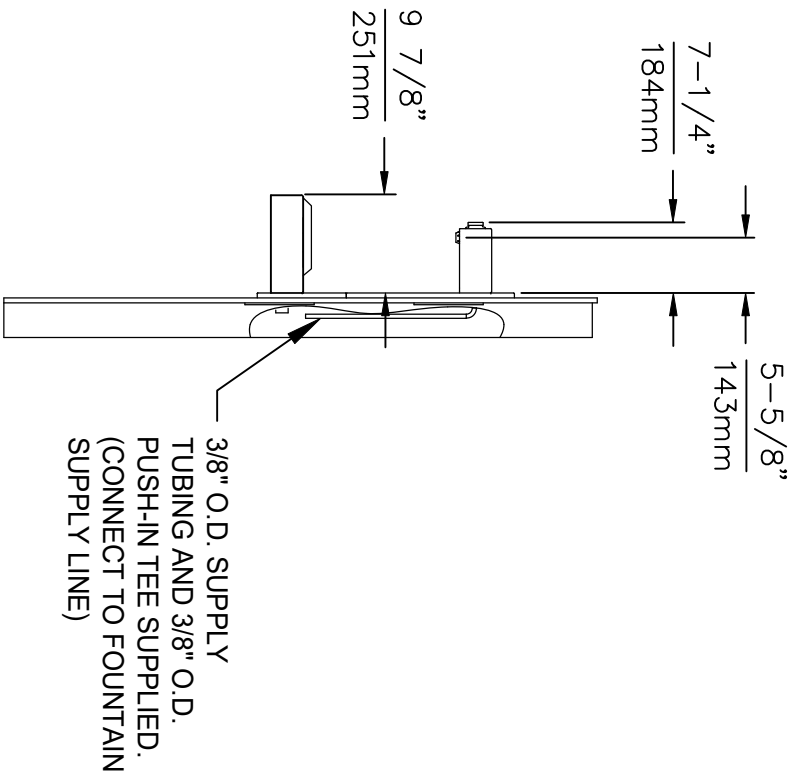
6700 MOUNTING PLATE
(BEHIND FINISH WALL)
- OR -
6700R RETROFIT PLATE
(ON TOP OF FINISH WALL)

* MODELS 1920 (BOTTLE FILLER),
BP15, BP6 (BACK PANELS) AND
6468 (WASTE DRIP TRAY) ARE
ALL AVAILABLE TOGETHER AS
MODEL 1922.



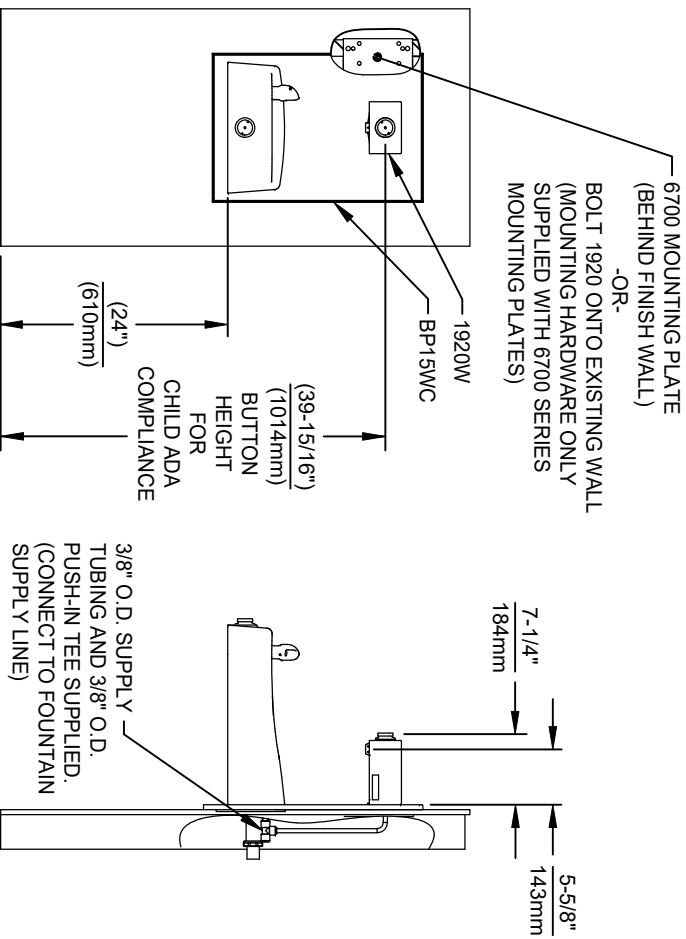
INSTALLATION ABOVE 6468

1. SEE SEPARATE INSTALLATION DRAWINGS FOR MOUNTING PLATE, WASTE DRIP TRAY AND BACK PANELS (SHOWN FOR REFERENCE - NOT SUPPLIED).
2. WHEN INSTALLING THIS UNIT, LOCAL, STATE OR FEDERAL CODES SHOULD BE ADHERED TO FOR INSTALLATION LOCATIONS, WASTE & SUPPLY REQUIREMENTS OTHER THAN SHOWN.

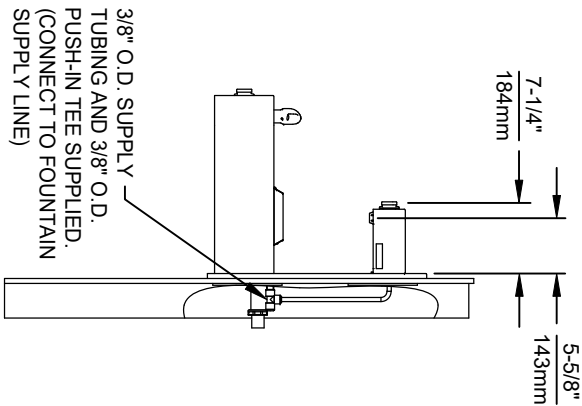


3/8" O.D. SUPPLY
TUBING AND 3/8" O.D.
PUSH-IN TEE SUPPLIED.
(CONNECT TO FOUNTAIN
SUPPLY LINE)

| | | | |
|---|----------------|---|--------------|
|  | | 1455 KLEPPE LANE SPARKS, NEVADA 89431 (775) 359-4712 FAX (775) 359-7424 E-MAIL: HAWS@HAWS.CO.COM WEBSITE: WWW.HAWS.CO.COM | |
| EQ. NO. | REVISED PER BY | MODEL(S) | PART NUMBER |
| 6468 | EQ. 6131 J.G. | 1920/1920HPS/1920W | 0510000490.D |
| DATE | DATE | SCALE | REVISION |
| 11/2/24 | 11/2/24 | N/A | 13 |
| APPROVED: | DATE | INSTALLATION | SHEET 8 OF 9 |
| RH | 11/2/24 | | |



1109P CONFIG STD CHLD HEIGHT



INSTALLATION FOR 1311P CONFIG STD CHILD HEIGHT

- NOTES:
1. HEIGHT DIMENSIONS SHOWN ARE FOR CHILD ADA APPLICATIONS:
 - BOTTLE FILLER HEIGHT AT 40" MAX.
 - DRINKING FOUNTAIN BUBBLER HEIGHT AT 30" MAX.(SEE SHEETS 3, 4 & 5 FOR ADULT ADA HEIGHT DIMENSIONS)
 2. SEE SEPARATE 6700 DRAWINGS FOR MOUNTING PLATES AND BACK PANELS (SHOWN FOR REFERENCE - SOLD SEPERATELY OR PART OF A BUNDLED PRODUCT).
 3. WHEN INSTALLING THIS UNIT, LOCAL, STATE OR FEDERAL CODES SHOULD BE ADHERED TO FOR INSTALLATION LOCATIONS, WASTE & SUPPLY REQUIREMENTS OTHER THAN SHOWN.

ECN NO. REVISED PER BY:

5607 ECN: 6131 JG

DRAWN: DATE: CHK'D:

FV 01/26/24 JG

APPROVED: DATE:

RH 11/28/24

MODEL(S)

1920/1920HPS/1920W

SCALE: N/A

DRAWING TYPE:

INSTALLATION

SHEET 9 OF 9

PART NUMBER

0510000490.D

REVISION

13

1455 KLEPPE LANE

SPARKS, NEVADA, 89431


(775) 359-4712 FAX (775) 359-7424

E-MAIL: HAVS@HAVASCO.COM

WEBSITE: WWW.HAVASCO.COM

6700 INDEX

| INSTALLATION WITH: | TYPICAL USES | SEE SHEET ... |
|----------------------|---|---------------|
| GENERAL INSTALLATION | IMPORTANT INFORMATION FOR ALL INSTALLATIONS | 3 OF 6 |
| 1001 BOWLS | HAWS SERIES 1001X, 1001.8X | 3 OF 6 |
| 1107 BOWLS | HAWS SERIES 1107X, 1107.8X | 3 OF 6 |
| 1109 BOWLS | HAWS SERIES 1109X, 1109.8X | 3 OF 6 |
| 1047 BOWLS | HAWS SERIES 1047 | 4 OF 6 |
| 1011 BOWLS | HAWS SERIES 1011X, 1011.8X | 4 OF 6 |
| 1119 BOWLS | HAWS SERIES 1119X, 1119.8X | 4 OF 6 |
| 1117 BOWLS | HAWS SERIES 1117X, 1117.8X | 5 OF 6 |
| 1311 BOWLS | HAWS SERIES 1311 | 5 OF 6 |
| 1501 BOWLS | HAWS SERIES 1501 | 5 OF 6 |
| CHILD HEIGHT | HAWS 1107PCH, 1109PCH, 1311PCH | 6 OF 6 |



Haws

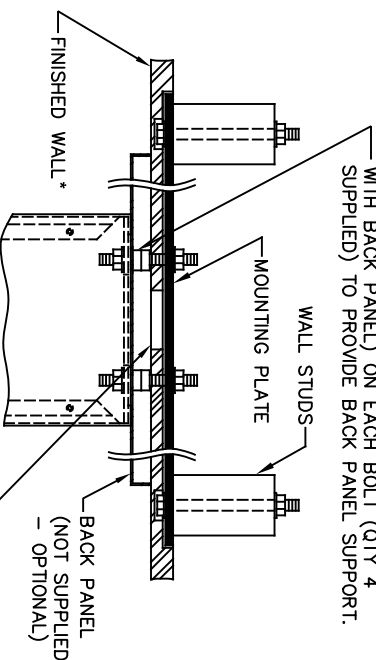
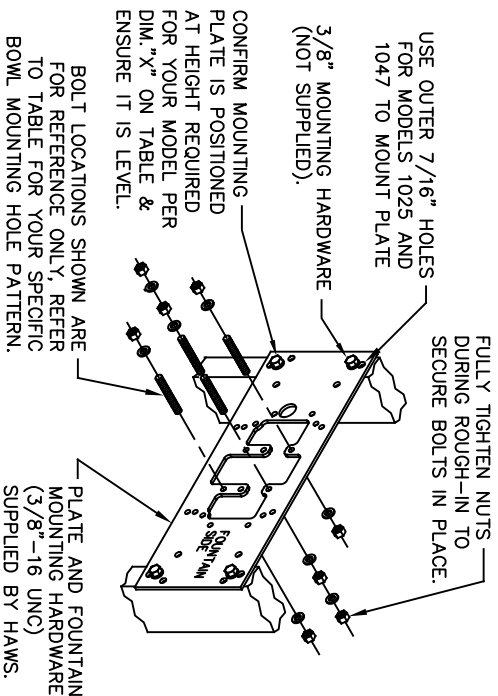
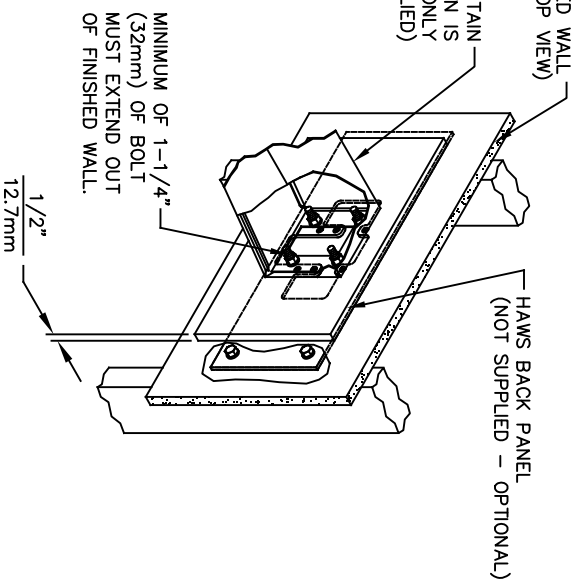
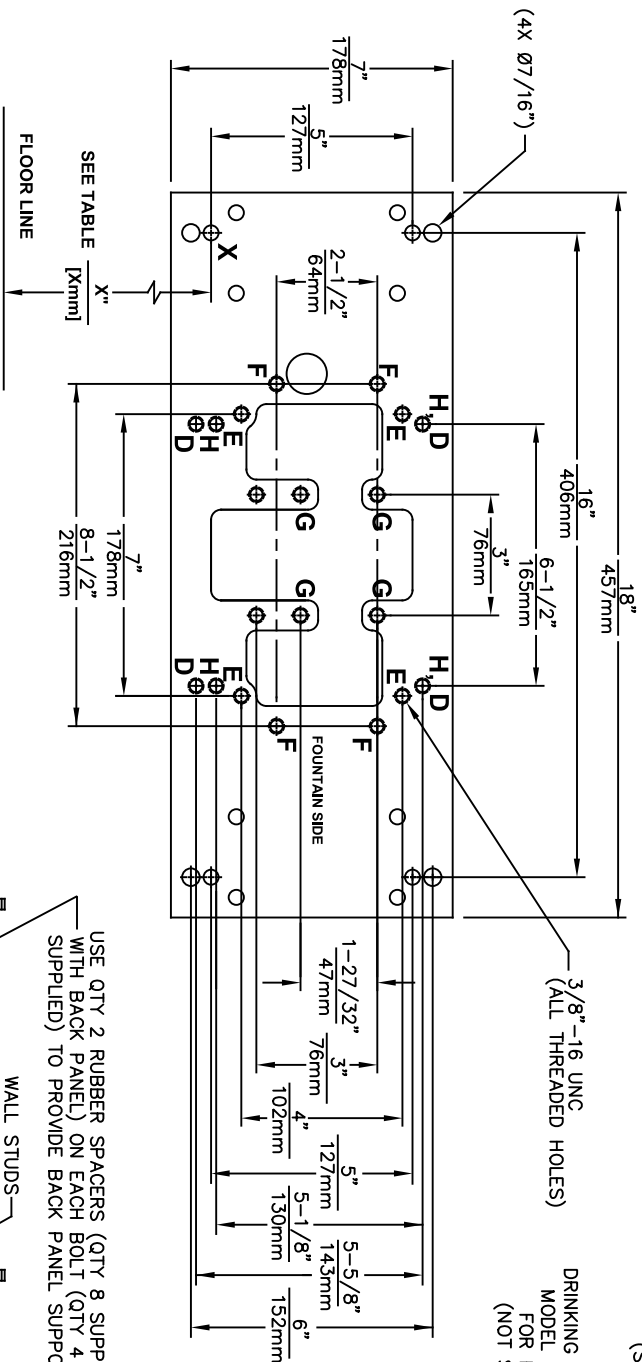
Since 1906

1455 KLEPPE LANE
SPARKS, NEVADA 89431
(775) 359-4712 FAX (775) 359-7424
E-MAIL: HAWS@HAWS.CO.COM
WEBSITE: WWW.HAWS.CO.COM

ECN NO. REVISED PER BY: JG
DRAWN: JG
DATE: 10/03/24
APPROVED: JG

MODEL(S)
67/00

PART NUMBER
0002080016
REVISION
26



| DRINKING FOUNTAIN (ONLY) AT 27" ADULT HEIGHT (SEE SPECIFIC MODEL O&M'S FOR OTHER HEIGHTS) | | | |
|--|----------------------------|--|--|
| MODEL | USE BOWL MTG. HOLE PATTERN | USE "X" DIM. BELOW TO POSITION MOUNTING PLATE HOLE "X" | |
| 1001 | "G" | 25-3/8" [645mm] | |
| 1025 | "D" | 28-1/8" [714mm] | |
| 1047 | "E" | 24-3/8" [619mm] | |
| 1105 | "H" | 34-5/16" [872mm] | |
| 1107 | "F" | 26-3/16" [665mm] | |
| 1109 | "H" | 27-5/16" [694mm] | |
| 1109.14 | "H" | 27-5/16" [694mm] | |
| 1109FR | "H" | 27-5/16" [694mm] | |
| 1311 | "E" | 26-3/4" [679mm] | |
| WASTE DRIP TRAY (ONLY) AT 27" ADULT HEIGHT | | | |
| 6468 | "G" | 25-3/8" [645mm] | |
| 1922 | "G" | 25-3/8" [645mm] | |

TOP VIEW

6700 MOUNTING PLATE

FOR USE WITH

DRINKING FOUNTAINS

AND WASTE DRIP TRAYS

AT 27" ADULT HEIGHT

(SEE SHEETS 2 - 5 FOR USE WITH


BOTTLE FILLER 1920/1920HO SERIES

AND CHILD HEIGHT APPLICATIONS)

****FINISH WALL OVER MOUNTING PLATE AND BEHIND BACK PANEL. MAKE SURE THAT FINISHED WALL EXTENDS WITHIN THE BRACKET/BOWL MOUNTING HOLES (TO PROVIDE SURFACE AREA FOR RUBBER SPACERS TO CONTACT).**

CAUTION

REGARDING CONCRETE/MASONRY WALL MOUNTING: DO NOT SECURE MOUNTING PLATE TO SAME SIDE OF WALL AS FOUNTAIN. AVOID COMPROMISING INTEGRITY OF WALL WHEN ANCHORING FOUNTAIN. IT IS RECOMMENDED THAT INSTALLER CALL TECHNICAL SUPPORT IF THERE ARE ANY QUESTIONS AS TO HOW TO OBTAIN A PROPER ANCHOR IN CONCRETE/MASONRY WALLS. 1-800-766-5612



Haws®
Since 1906

ECN NO. REVISED PERBY: 6700

DRAWN: 6700

CAL: 6700

APPROVED: 6700

DATE: 02/11/25

SCALE: N/A

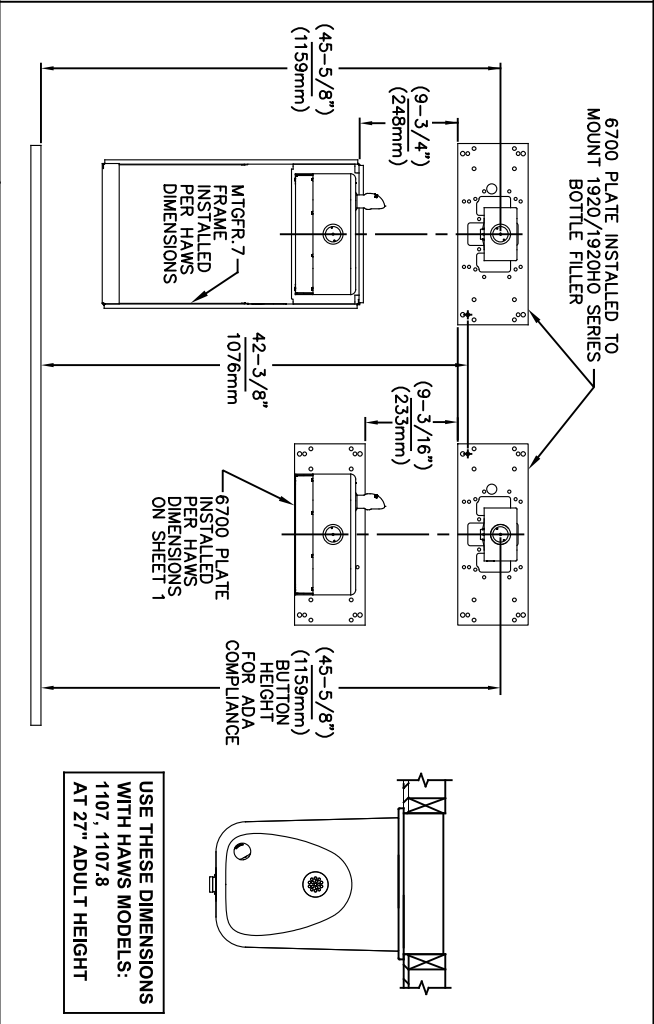
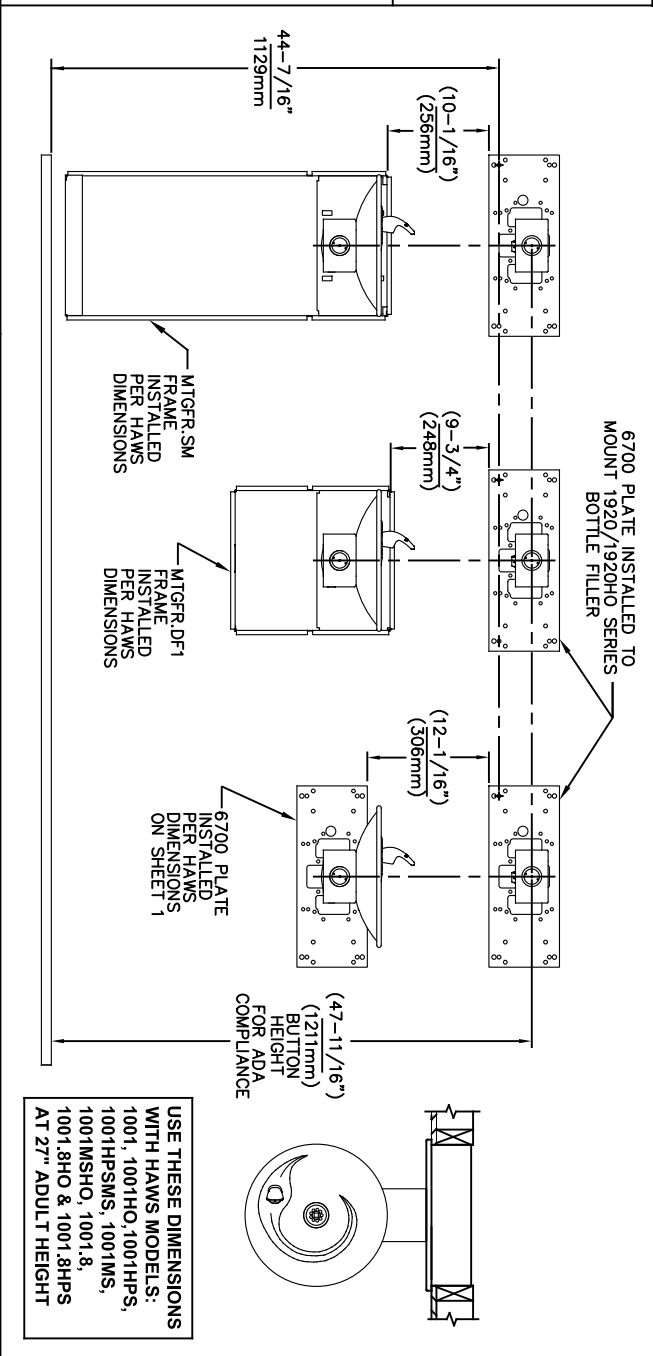
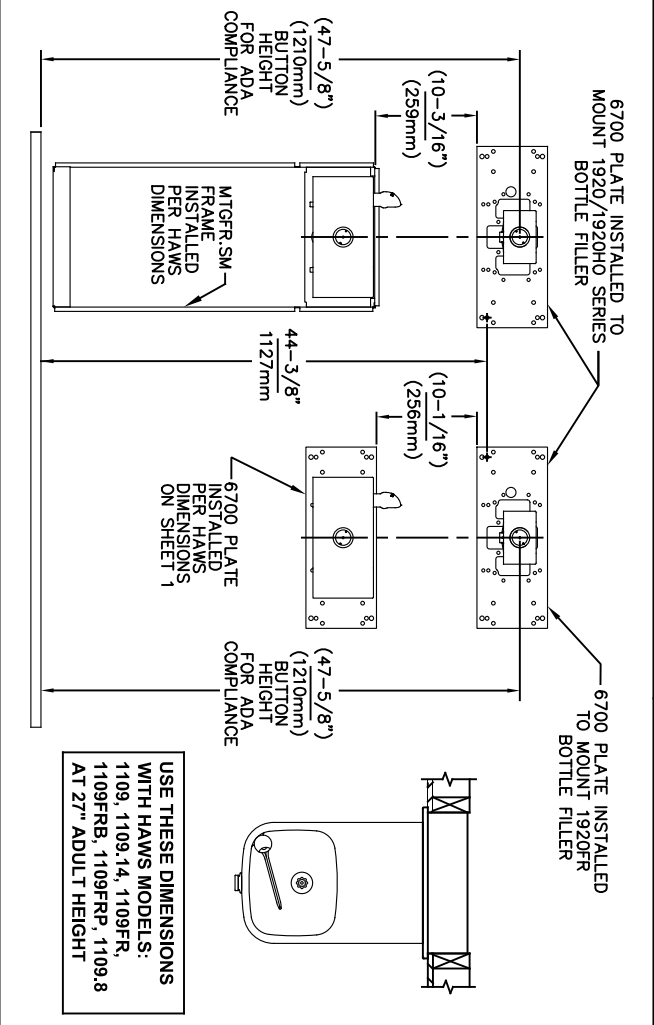
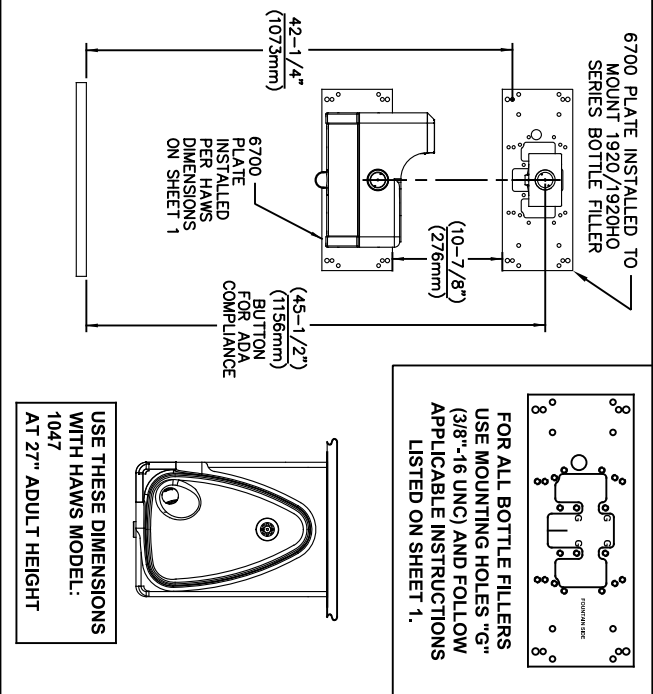
DRAWING TYPE: INSTALLATION

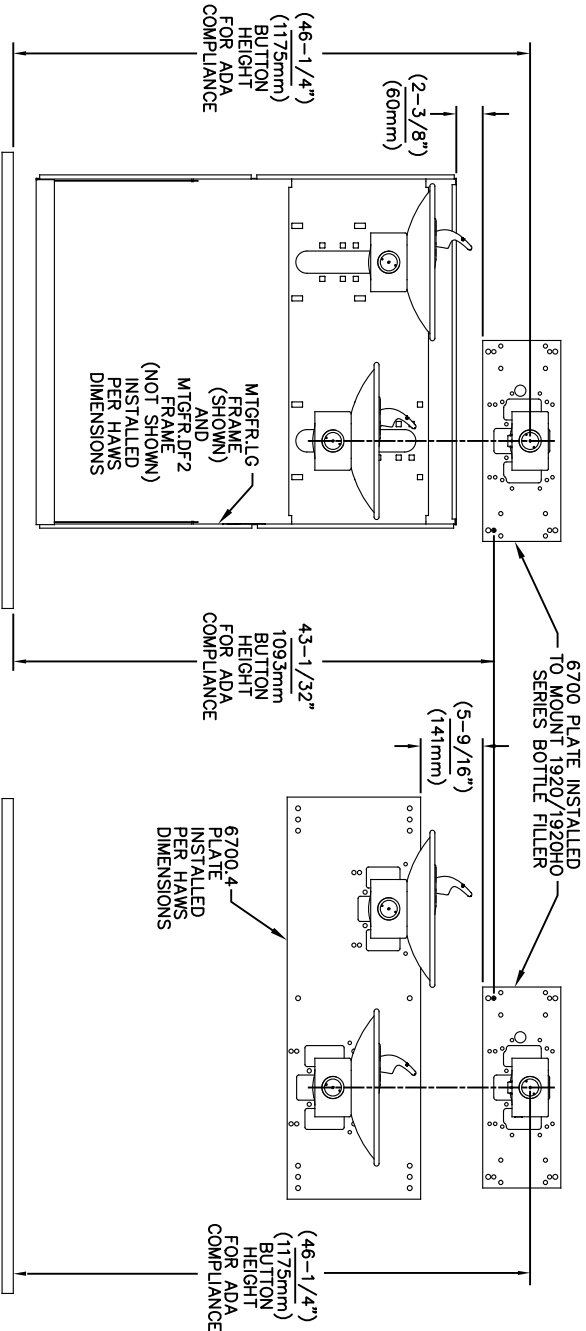
SIZE: A

SHEET: 2 OF 6

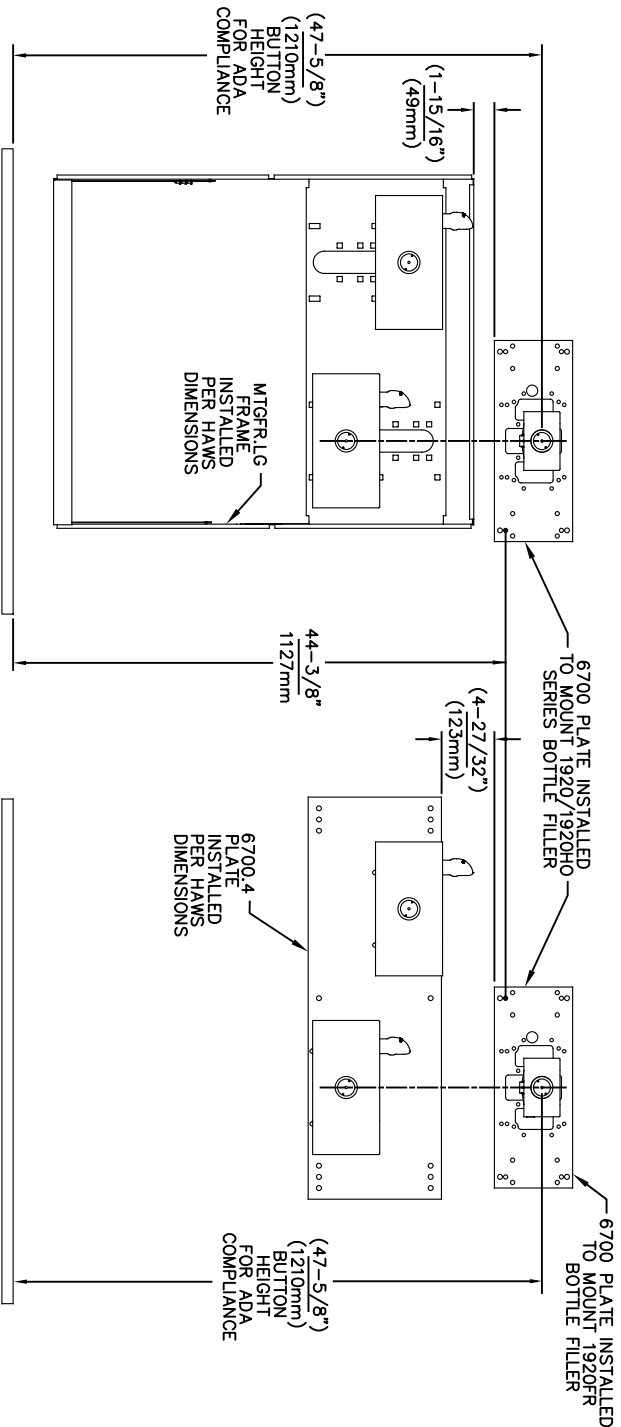
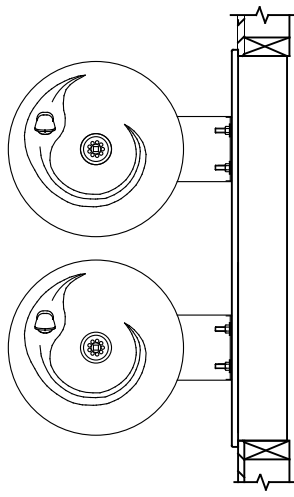
1455 KLEPPE LANE
SPARKS, NEVADA 89431
(775) 359-4712 FAX (775) 359-7424
E-MAIL: HAWS@HAWS.CO.COM
WEBSITE: WWW.HAWS.CO.COM

PART NUMBER
0002080016

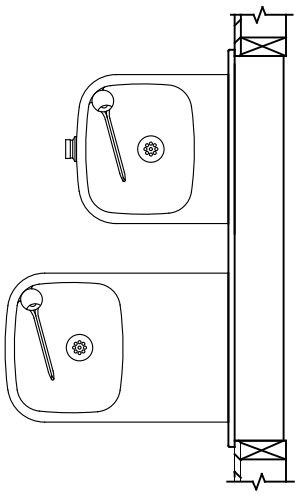




USE THESE MOUNTING DIMENSIONS IF INSTALLING OVER HAWS FOUNTAIN
MODEL: 1011, 1011HO, 1011HO2, 1011HPS, 1011HPSHO, 1011HPSHO2, 1011HPSMS, 1011HMS, 1011MSHO, 1011MSHO2, 1011.8, 1011.8HO, 1011.8HO2 & 1011.8HPSM AT 27" ADULT HEIGHT
INSTALL THE 6700 ABOVE THE FOUNTAIN MOUNTING PLATE OR FRAME AT THE DIMENSION SHOWN FOR CORRECT BACKPANEL SPACING
BACK PANELS FOR BOTTLE FILLERS (NOT SUPPLIED - OPTIONAL) ARE NOT SHOWN FOR CLARITY.




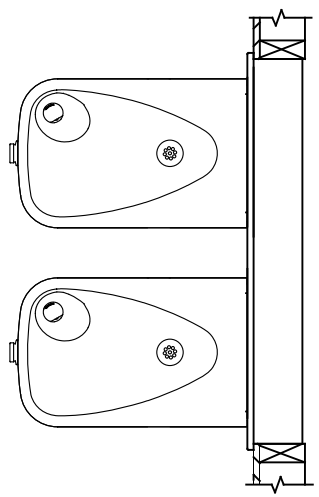
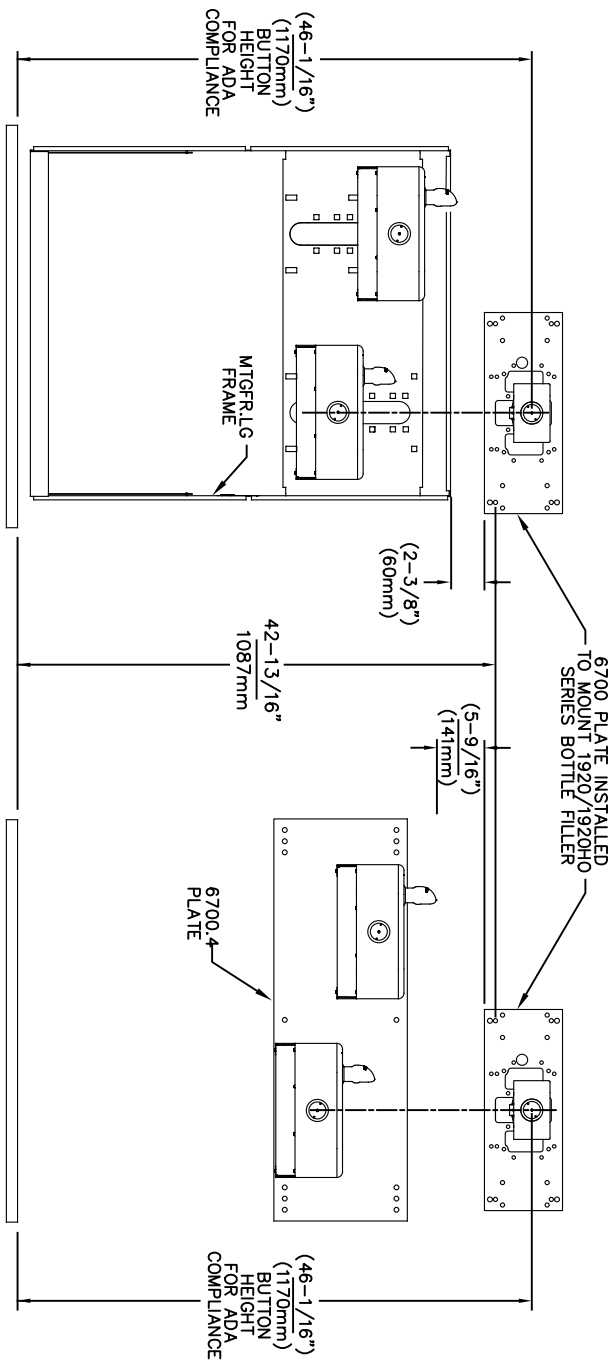
USE THESE MOUNTING DIMENSIONS IF INSTALLING OVER HAWS FOUNTAIN
MODEL: 1119, 1119.14, 1119.14HO, 1119.14HO2, 1119FR, 1119FRB, 1119FRP, 1119HO, 1119HO2 & 1119.8 AT 27" ADULT HEIGHT
INSTALL THE 6700 ABOVE THE FOUNTAIN MOUNTING PLATE OR FRAME AT THE DIMENSION SHOWN FOR CORRECT BACKPANEL SPACING
BACK PANELS FOR BOTTLE FILLERS (NOT SUPPLIED - OPTIONAL) ARE NOT SHOWN FOR CLARITY.



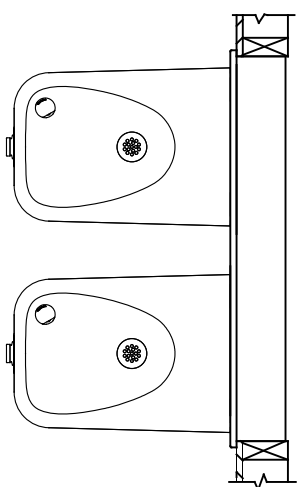
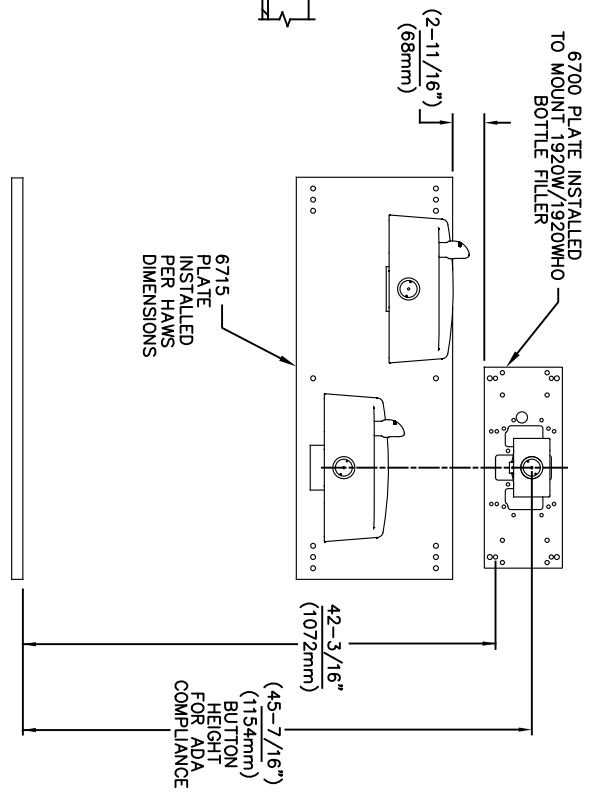
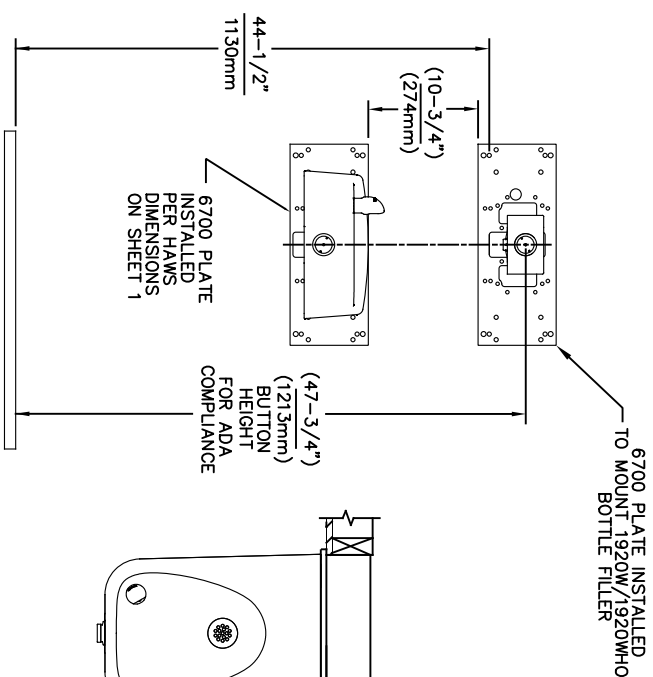
- NOTES:
1. WHEN INSTALLING THIS UNIT, LOCAL, STATE OR FEDERAL CODES SHOULD BE ADHERED TO.
 2. BACK PANELS (OPTIONAL) NOT SHOWN FOR CLARITY.

6700 MOUNTING PLATE
FOR USE WITH BOTTLE FILLER
(SEE SHEET 1 FOR USE WITH DRINKING FOUNTAINS)

| | | | |
|---|-------------------|---|----------------------------|
|  | | 1456 KLEPPE LANE SPARKS, NEVADA 89431 (775) 359-4712 FAX (775) 359-7424 E-MAIL: HAWS@HAWS.CO.COM WEBSITE: WWW.HAWS.CO.COM | |
| ECN NO. REVISED PERBY: | MODEL(S) | PART NUMBER | |
| 5550 ECN 6148 JG | 6700 | 0002080016 | |
| DRAWN: FV | DATE: 09/14/20 JG | REVISION: 26 | |
| APPROVED: FV | DATE: 02/11/25 | SCALE: 1:13 | DRAWING TYPE: INSTALLATION |
| | | SIZE: A | SHEET 4 OF 6 |




USE THESE MOUNTING DIMENSIONS IF
INSTALLING OVER HAWS FOUNTAIN
MODEL: 1117, 1117.8
AT 27" ADULT HEIGHT
INSTALL THE 6700 ABOVE THE
FOUNTAIN MOUNTING PLATE OR
FRAME AT THE DIMENSION SHOWN
FOR CORRECT BACKPANEL SPACING
BACK PANELS FOR BOTTLE FILLERS
(NOT SUPPLIED - OPTIONAL) ARE NOT
SHOWN FOR CLARITY.



USE THESE MOUNTING DIMENSIONS IF
INSTALLING OVER HAWS FOUNTAIN
MODEL: 1311, 1501
AT 27" ADULT HEIGHT
INSTALL THE 6700 ABOVE THE
FOUNTAIN MOUNTING PLATE AT
THE DIMENSION SHOWN FOR CORRECT
BACKPANEL SPACING (IF APPLICABLE).
BACK PANEL FOR BOTTLE FILLER
(NOT SUPPLIED - OPTIONAL) IS NOT
SHOWN FOR CLARITY.

- NOTES:
1. WHEN INSTALLING THIS UNIT, LOCAL, STATE OR FEDERAL CODES SHOULD BE ADHERED TO.
 2. BACK PANELS (OPTIONAL) NOT SHOWN FOR CLARITY.

6700 MOUNTING PLATE
FOR USE WITH BOTTLE FILLER
(SEE SHEET 1 FOR USE WITH
DRINKING FOUNTAINS)

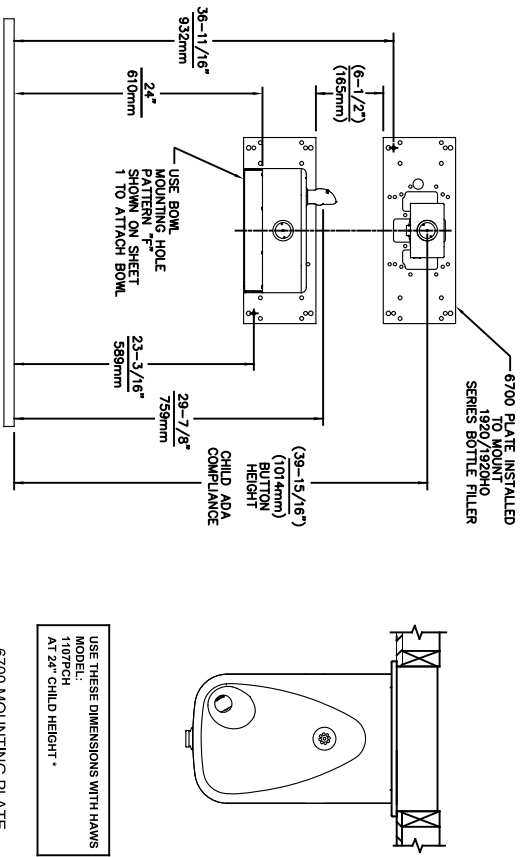


Haws®
Since 1906

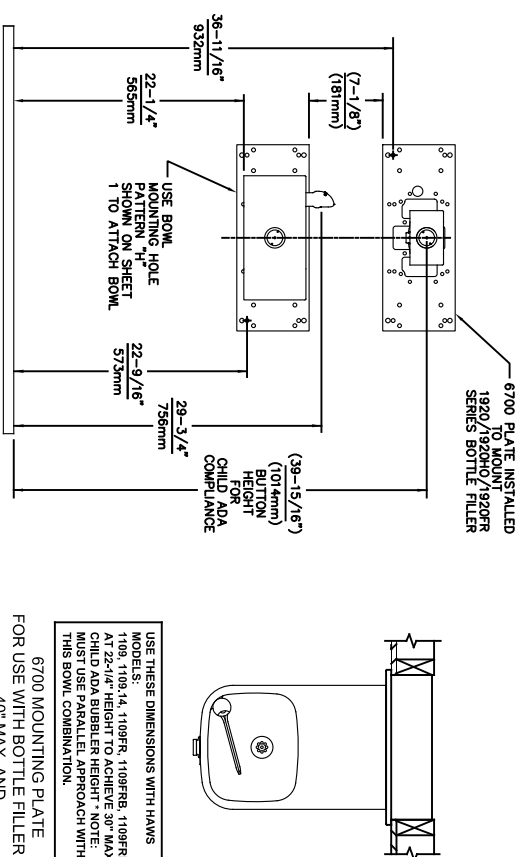
1456 KLEPPE LANE
SPARKS, NEVADA 89431
(775) 359-4712 FAX (775) 359-7424
E-MAIL: HAWS@HAWS.CO.COM
WEBSITE: WWW.HAWS.CO.COM

ECN NO. 5550
DRAWN: FV
APPROVED: FV
REVISED PERBY: JG
DATE: 05/14/20
CHKD: JG
MODEL(S) 6700
PART NUMBER 0002080016
REVISION 26

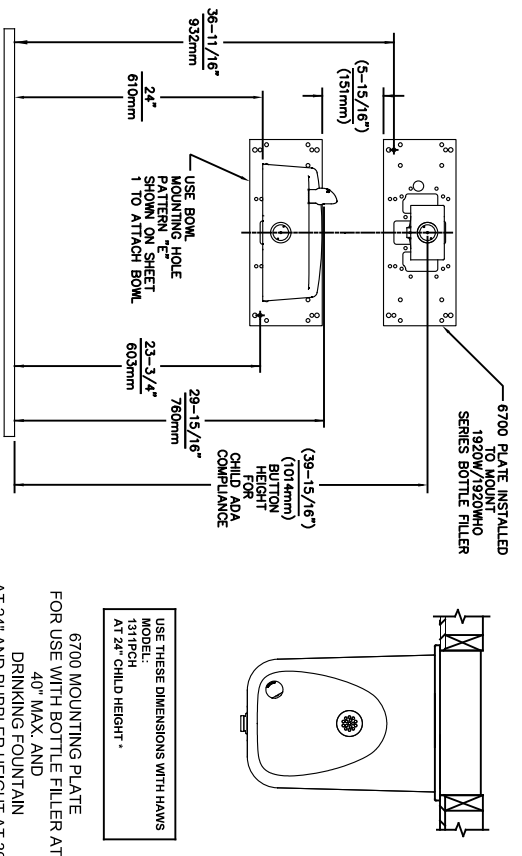
SCALE: 1:13
DRAWING TYPE: INSTALLATION
SHEET 5 OF 6



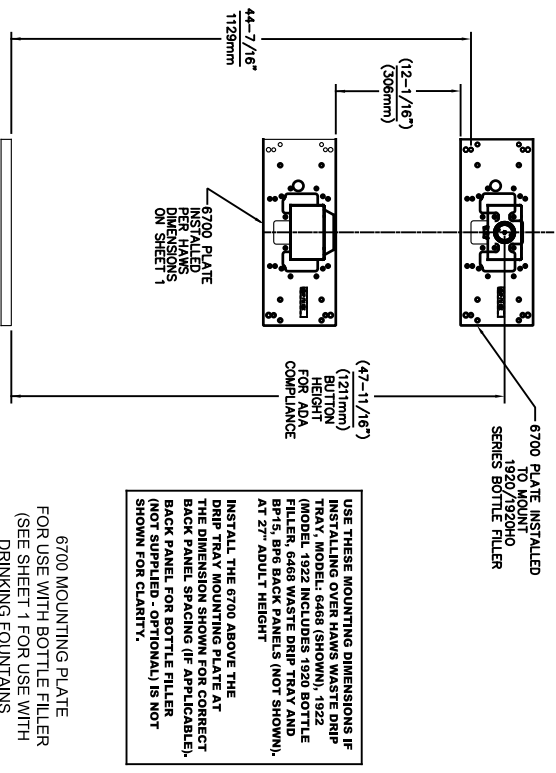
6700 MOUNTING PLATE
FOR USE WITH BOTTLE FILLER AT
40\" MAX. AND
DRINKING FOUNTAIN
AT 24\" AND BUBBLER HEIGHT AT 30\"
MAX. FOR CHILD ADA HEIGHT
(SEE SHEETS 1 & 2 FOR USE WITH
DRINKING FOUNTAIN AT 27\" ADULT
HEIGHT DIMENSIONS)



6700 MOUNTING PLATE
FOR USE WITH BOTTLE FILLER AT
40\" MAX. AND
DRINKING FOUNTAIN
BUBBLER HEIGHT AT 30\" MAX.
FOR CHILD ADA HEIGHT
MUST USE PARALLEL APPROACH
WITH THIS BOWL COMBINATION
(SEE SHEETS 1 & 2 FOR USE WITH
DRINKING FOUNTAIN AT 27\" ADULT
HEIGHT DIMENSIONS)



6700 MOUNTING PLATE
FOR USE WITH BOTTLE FILLER AT
40\" MAX. AND
DRINKING FOUNTAIN
AT 24\" AND BUBBLER HEIGHT AT 30\"
MAX. FOR CHILD ADA HEIGHT
(SEE SHEETS 1 & 4 FOR USE WITH
DRINKING FOUNTAIN AT 27\" ADULT
HEIGHT DIMENSIONS)



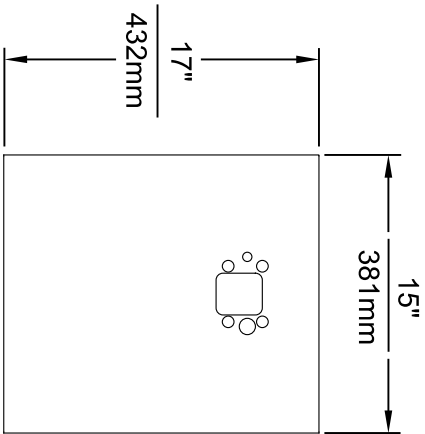
6700 MOUNTING PLATE
FOR USE WITH BOTTLE FILLER
(SEE SHEET 1 FOR USE WITH
DRINKING FOUNTAINS
AND WASTE DRIP TRAY)



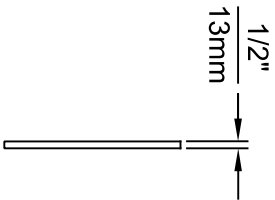
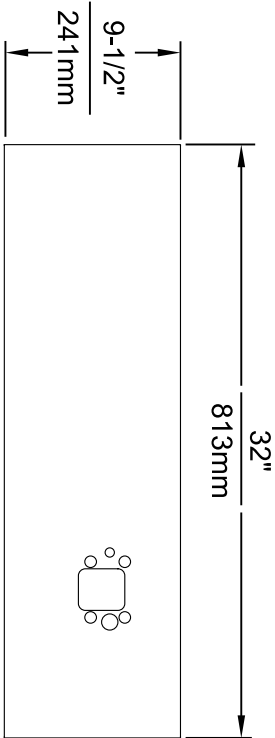
Since 1906

1456 KLEPPE LANE
SPARKS, NEVADA 89431
(775) 359-4712 FAX (775) 359-7424
E-MAIL: HAWS@HAWS.CO.COM
WEBSITE: WWW.HAWS.CO.COM

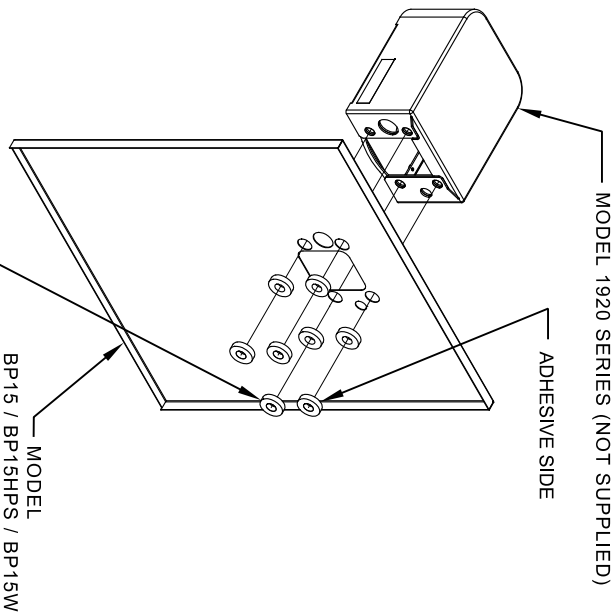
ECN NO. REVISED PERBY: MODEL(S)
5893 1 ECN: 6148 JG
DRAWN: DATE: CHKD:
FV 07/26/23 JG
APPROVED: DATE: SCALE: 1:13 DRAWING TYPE: INSTALLATION SHEET A OF 6
6700 PART NUMBER 0002080016 REVISION 26



MODEL BP15 / BP15HPS / BP15W



MODEL BP32 / BP32HPS / BP32W

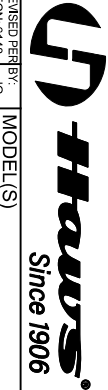


8 SPACERS (2 PER MOUNTING BOLT IF THE MOUNTING PLATE (MODEL 6700 - NOT SUPPLIED) IS INSTALLED BEHIND THE FINISHED WALL. USE 1 SPACER PER BOLT FOR RETROFITS WHERE THE MOUNTING PLATE (MODEL 6700R - NOT SUPPLIED) IS INSTALLED IN FRONT OF THE FINISHED WALL)

INSTALLATION OVER SINGLE FOUNTAIN

SHOWN FROM REAR

(SEE SHEET 3 OF 3 FOR INSTALLATION OF SPACERS
ON COMBINATION BOTTLE FILLER AND FOUNTAIN
BACK PANELS FOR CHILD HEIGHT APPLICATIONS -
MODELS BP15C & BP15WC)



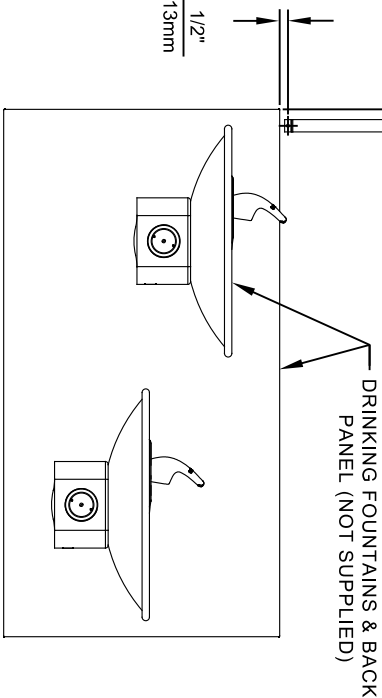
| | | | |
|-------------------------|------------------|---------------|--------------|
| EQ' NO. REVISED PER BY: | | MODEL(S) | |
| SOB | EQ'N 6148 - J.G. | | |
| DRAWN | DATE | CHK'D | |
| 10/27/15 | J.G. | | |
| APPROVED: | DATE | SCALE: | 11 |
| F.V. | 02/11/25 | DRAWING TYPE: | INSTALLATION |
| | | SIZE: | A |
| | | SHEET: | 1 OF 3 |
| | | PART NUMBER | 0510000493 |
| | | REVISION | 6 |

1455 KLEPPE LANE
SPARKS, NEVADA 89431
(775) 359-4712 FAX (775) 359-7424
E-MAIL: HAWS@HAWS.CO.COM
WEBSITE: WWW.HAWS.CO.COM

- NOTES:
1. WHEN INSTALLING THIS UNIT, LOCAL, STATE OR FEDERAL CODES SHOULD BE ADHERED TO.
 2. BOTTLE FILLER SHOWN FOR REFERENCE ONLY (NOT SUPPLIED).

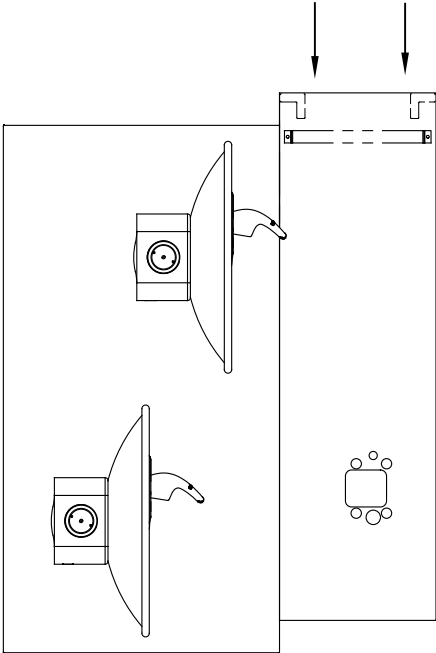
STEP 1

ATTACH SUPPLIED BRACKET TO WALL USING APPROPRIATE FASTENERS. BRACKET IS INSTALLED OVER THE HIGH-SIDE OF THE DRINKING FOUNTAIN



STEP 2

PLACE THE BACKPLATE AGAINST THE WALL AND SLIDE SIDEWAYS SO THE TABS CATCH UNDER THE BRACKET.

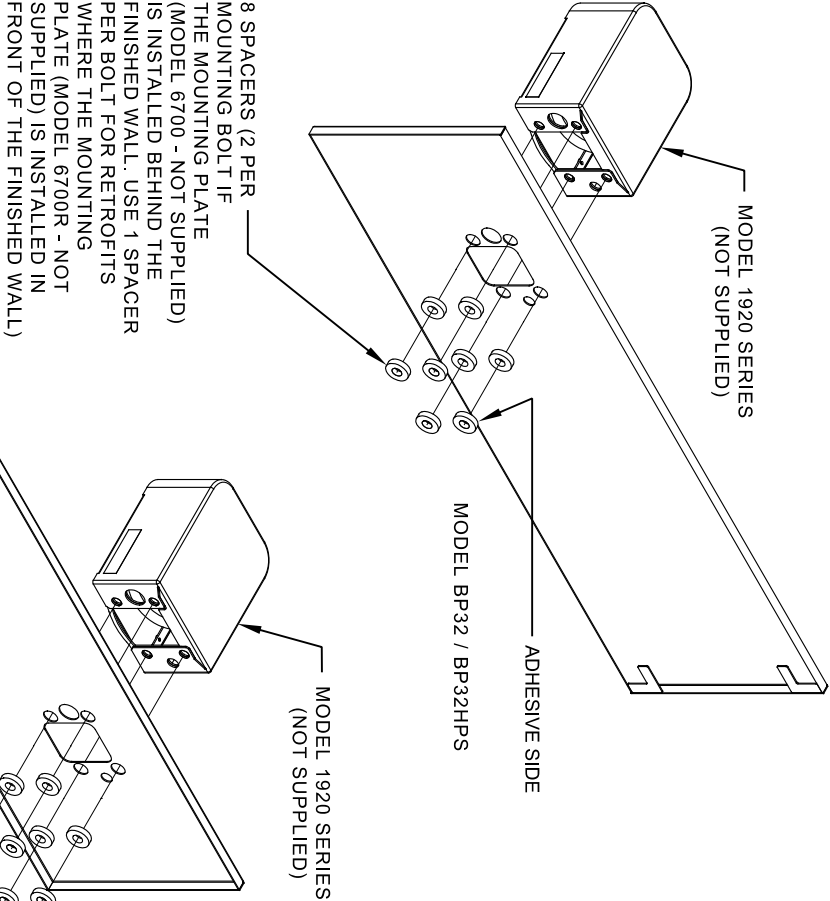


STEP 3

INSTALL THE BOTTLE FILLER (NOT SUPPLIED) PER THE INSTRUCTIONS SUPPLIED WITH THE UNIT.

NOTES:


1. WHEN INSTALLING THIS UNIT, LOCAL, STATE OR FEDERAL CODES SHOULD BE ADHERED TO.
2. BOTTLE FILLERS, DRINKING FOUNTAINS & DRINKING FOUNTAIN BACK PANELS SHOWN FOR REFERENCE ONLY (NOT SUPPLIED).



INSTALLATION OVER DOUBLE FOUNTAIN

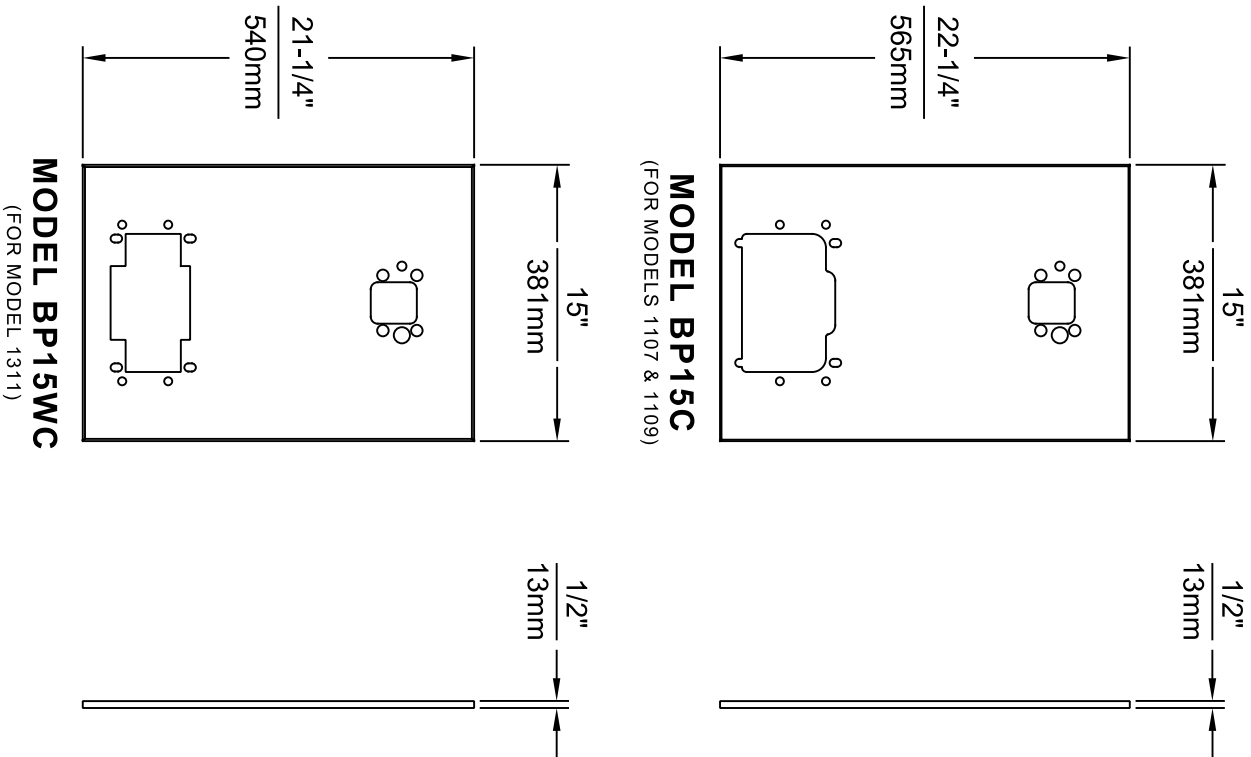
SHOWN FROM REAR

| | | | | | |
|----------------------------|-----------|-----------|---------------|--|--------------|
| EQN. NO. REQUESTED PER BY: | | MODEL(S) | | PART NUMBER | |
| EQN. NO. | EQN. 6148 | J.G. | MODEL(S) | DRAWING, BACK PANEL, SPACER INSTALLATION | 0510000493 |
| DRAWN BY | 10/01/17 | J.G. | CHNG. | FOR BP15 SERIES & BP32 SERIES, BOTTLE FILLER | REVISION |
| APPROVED: | DATE | SCALE: 11 | DRAWING TYPE: | INSTALLATION | SHEET 2 OF 3 |
| F.V. | 02/11/25 | SCALE: 11 | DRAWING TYPE: | INSTALLATION | SHEET 2 OF 3 |

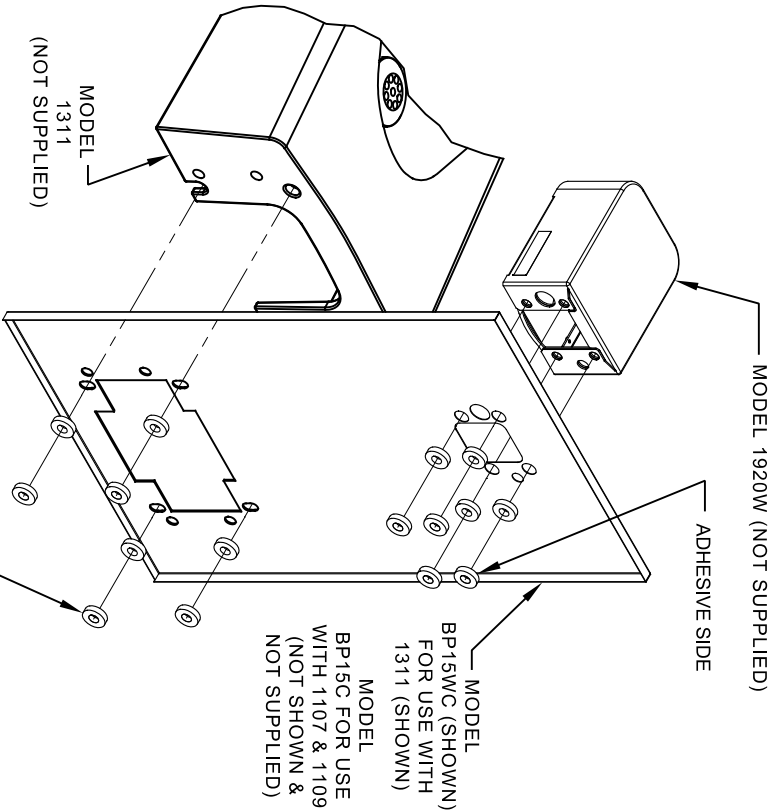


Haws
Since 1906

1455 KLEPPE LANE
SPARKS, NEVADA 89431
(775) 359-4712 FAX (775) 359-7424
E-MAIL: HAWS@HAWS.CO.COM
WEBSITE: WWW.HAWS.CO.COM



- NOTES:
1. WHEN INSTALLING THIS UNIT, LOCAL, STATE OR FEDERAL CODES SHOULD BE ADHERED TO.
 2. BOTTLE FILLER AND DRINKING FOUNTAIN SHOWN FOR REFERENCE ONLY (NOT SUPPLIED).




16 SPACERS (2 PER MOUNTING BOLT IF BOTH MOUNTING PLATES (MODEL 6700 - NOT SUPPLIED) ARE INSTALLED BEHIND THE FINISHED WALL. USE 1 SPACER PER BOLT FOR RETROFITS WHERE BOTH MOUNTING PLATES (MODEL 6700R - NOT SUPPLIED) ARE INSTALLED IN FRONT OF THE FINISHED WALL)

ONE PIECE INSTALLATION ON SINGLE FOUNTAIN

SHOWN FROM REAR

(MODEL BP15C & BP15WC ARE COMBINATION BOTTLE FILLER AND FOUNTAIN BACK PANELS USED FOR CHILD HEIGHT APPLICATIONS ONLY ON MODELS 1107, 1109 & 1311 - BOTTLE FILLER & DRINKING FOUNTAIN NOT SUPPLIED)

| | | | |
|---|-----------|---|--------------|
|  | | 1455 KLEPPE LANE SPARKS, NEVADA 89431 (775) 359-4712 FAX (775) 359-7424 E-MAIL: HAWS@HAWS.CO.COM WEBSITE: WWW.HAWS.CO.COM | |
| EQUIPMENT, REVISIONS BY: | | MODEL(S) | |
| SIZE | EQUIPMENT | DATE | REVISION |
| 10/15/23 | 10/15/23 | 10/15/23 | 10/15/23 |
| APPROVED: | DATE | SCALE: | INSTALLATION |
| FV | 02/11/25 | 1:1 | SIZE A |
| DRAWING, BACK PANEL, SPACER INSTALLATION | | PART NUMBER | |
| FOR BP15 SERIES & BP32 SERIES, BOTTLE FILLER | | 0510000493 | |
| | | REVISION | |
| | | 6 | |
| | | SHEET 3 OF 3 | |