

## FEATURES & BENEFITS

### CONSTRUCTION

Rugged ADA accessible 18 gauge Type 304 Stainless Steel swirl design bowl, 14 gauge Type 304 Stainless Steel bracket, and a vandal-resistant bottom plate provides a long lasting unit with added peace of mind.

### BOTTLE FILLER

Vandal-resistant, 14-gauge Type 304 stainless steel bottle filler housing with push button operation and 1 gpm (3.78 L) laminar flow.

### MOUNTING PLATES

3/16" (.47 cm) thick steel mounting plates are larger, thicker and stronger than any other plate in the industry, and shall include the all-thread studs, nuts, and washers which allows for easy installation to a framed wall. (P-trap and stop require rear access)

### BUBBLER HEADS

Polished chrome-plated brass bubbler head with integral laminar flow prevents splashing while providing a superior flow pattern. The integral 11/16" dia. basin shank and stainless anti-rotation roll pin for vandal resistance strength. Shielded, angled stream opening provides a steady source of drinking water at .45 gpm.

### FOUNTAIN VALVES

The push-button activated valves have an all stainless steel body, with chrome plated brass push button assembly which allows for front access to water stream adjustment, water control cartridge, and water supply strainer replacement without having to go through the bottom plate. Operating pressure range of 30 to 90 psi (2.1 to 6.2 bar).

### VANDAL RESISTANT

The bubbler heads, push buttons, round bowls, drain strainers and bottom plates are locked in place, discouraging unwanted vandal tampering.



## SPECIFICATIONS

Model 1011P Hi-Lo wall mounted ADA vandal-resistant water fountain bottle and filler shall include dual 18 gauge Type 304 Stainless Steel satin finish basins with integral swirl design, 14 gauge Type 304 Stainless Steel wall brackets and bottle filler bracket, in-wall 3/16" thick steel mounting plates for fountain and bottle filler, 100% lead-free waterways, vandal-resistant push-button operated stainless steel valves with front-accessible cartridge and flow adjustment, polished chrome-plated brass vandal resistant bubbler heads with integral laminar anti-squirt flow, 1 gpm (3.78 L) laminar flow bottle filler, chrome-plated brass vandal-resistant waste strainers, vandal resistant bottom plates, stainless steel satin finish back panels, high and low fountain mounting levels, and 1-1/4" O.D. (3.2 cm) waste pipes. (P-trap and stop require rear access)

## APPLICATIONS

Perfect for either public or private indoor/outdoor settings, Model 1011P is a great fit in areas where aesthetics are important to the overall appeal of the architecture. This series is precisely mounted, making it a nice addition to any surrounding. Beautiful satin finish helps to maintain the fountains overall appeal, so it always remains looking as new as it did when it was installed. Specifically, this type of wall mounted drinking fountain may be placed in settings such as: schools and other locations in and around office buildings where the temperature remains above freezing. Model meets all current Federal Regulations for the disabled including those in the Americans with Disabilities Act. Haws manufactures drinking fountains, faucets and electric water coolers to be lead-free by all known definitions including NSF/ANSI/CAN 61- Section 9, NSF/ANSI/CAN 372, California Proposition 65, and the Federal Safe Drinking Water Act. Product is compliant to California Health and Safety Code 116875 (AB 1953-2006), and 116876 (AB 100) "NSF/ANSI/CAN 61: Q ≤ 1".



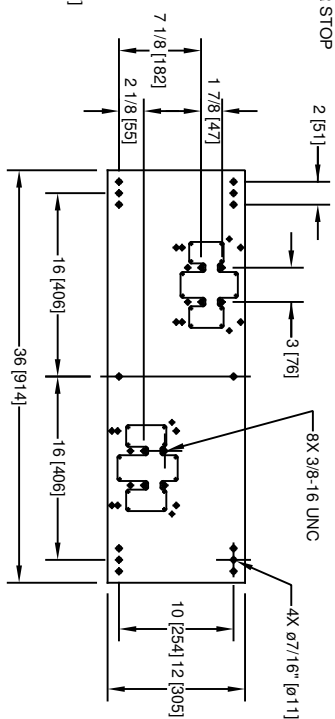
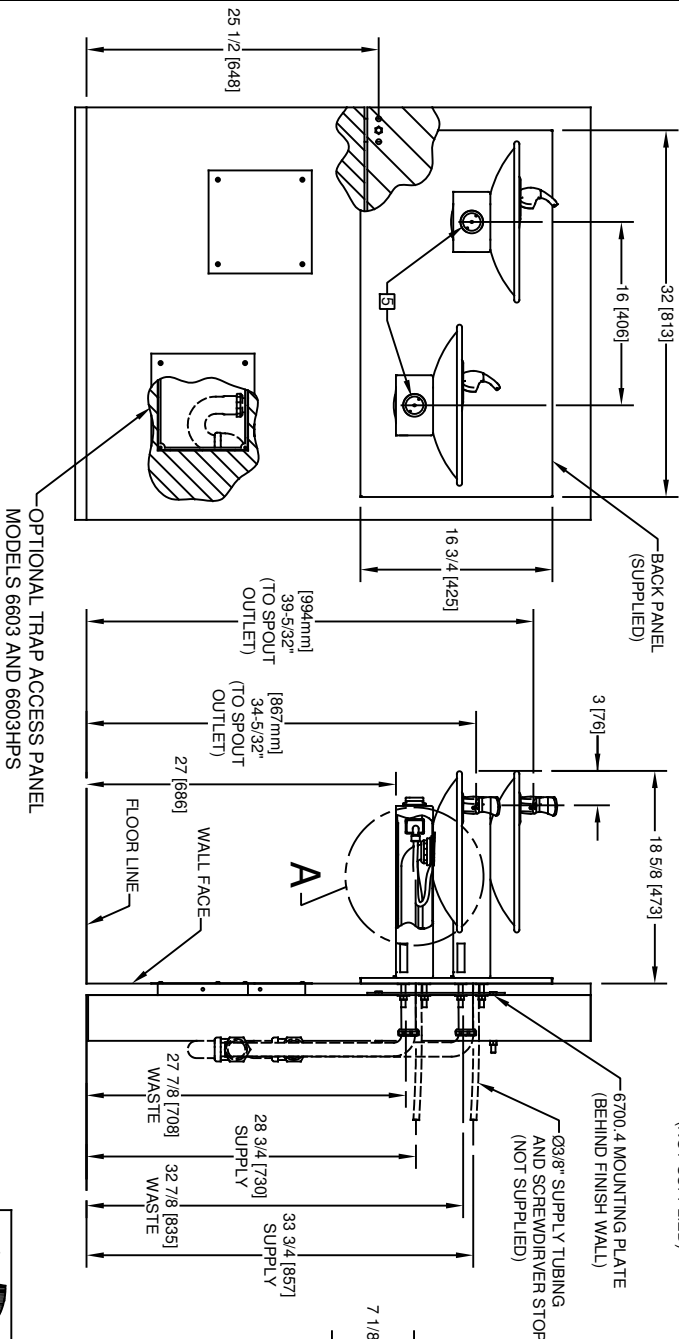
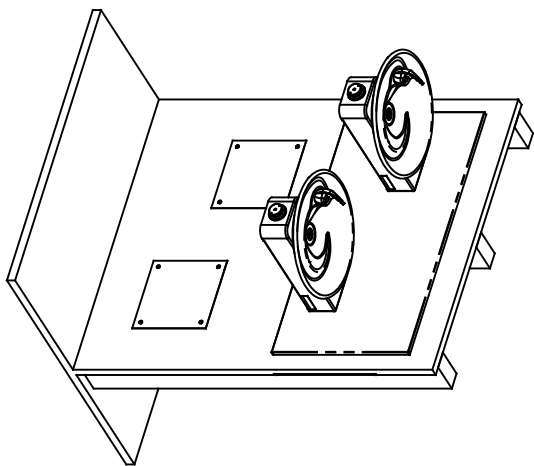
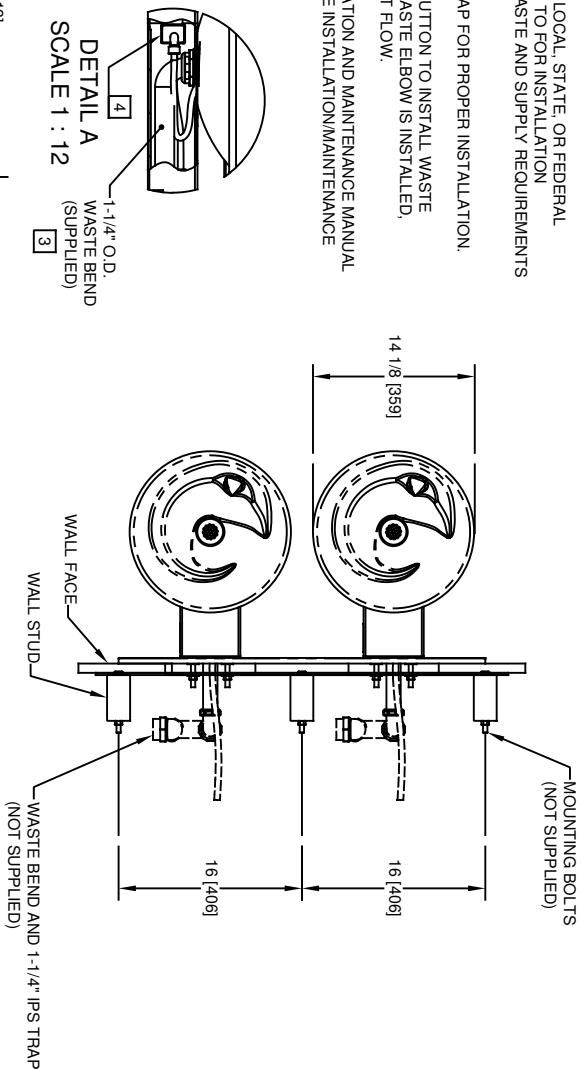
## OPTIONS

- Water Filter: Model 6480 filter kit with 3000 gallon carbon block filter, filter head, and mounting bracket.
- Support Frame: Model 6800 In-wall floor mounted fixture support legs, welded steel 4-bolt floor flanges, and supplied with 'U' bolts and hardware.


For more information, visit [www.hawscow.com](http://www.hawscow.com) or call (888) 640-4297.

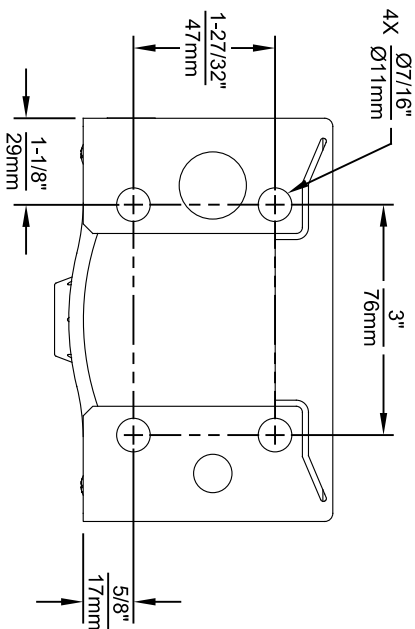
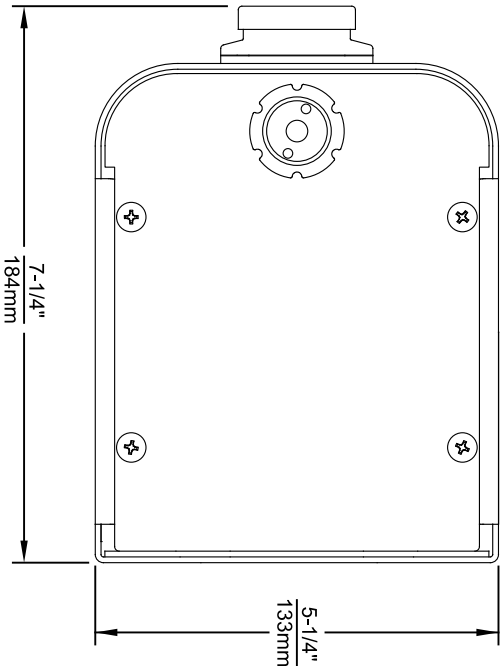
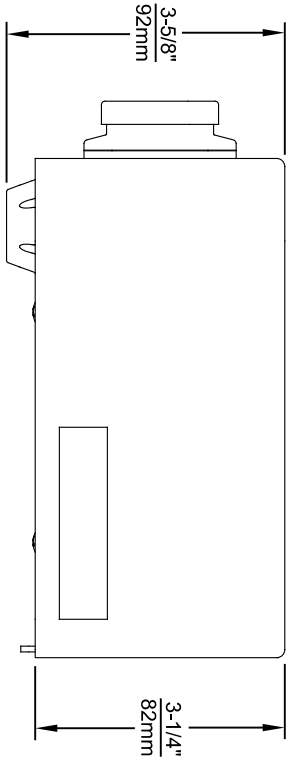
**NOTES:**

1. HOLD ROUGH-IN DIMENSIONS  $\pm 1/8"$  (3.2mm).
2. WHEN INSTALLING THIS UNIT, LOCAL, STATE, OR FEDERAL CODES SHOULD BE ADHERED TO FOR INSTALLATION DIMENSIONS (LOCATIONS), WASTE AND SUPPLY REQUIREMENTS OTHER THAN SHOWN.
3. INSTALLER MUST PROVIDE TRAP FOR PROPER INSTALLATION.
4. REMOVE VALVE FROM PUSH BUTTON TO INSTALL WASTE ELBOW ONTO BOWL. AFTER WASTE ELBOW IS INSTALLED, REINSTALL VALVE AND ADJUST FLOW.
5. REFER TO 5874 SERIES OPERATION AND MAINTENANCE MANUAL FOR PUSH BUTTON AND VALVE INSTALLATION/MAINTENANCE INSTRUCTIONS.

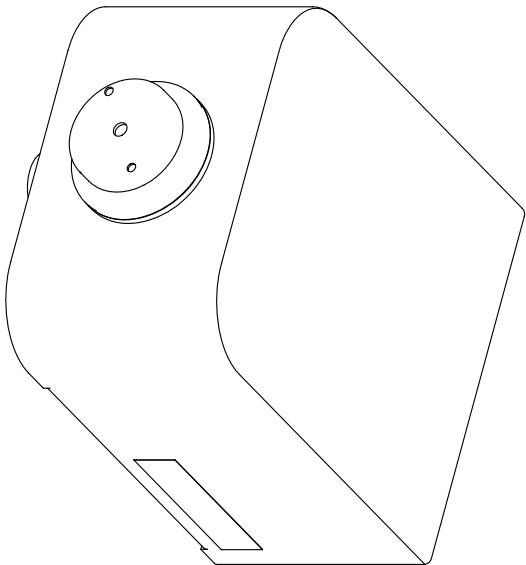


**6700.4 MOUNTING PLATE  
MUST BE INSTALLED BEFORE FINISH WORK.  
THIS PLATE IS REQUIRED - SOLD SEPARATELY.**

		<b>Haws</b>	
1456 KLEPPE LANE		SPARKS, NEVADA 89431	
(775) 359-4712 FAX (775) 359-7424		E-MAIL: HAWS@HAWS.CO.COM	
WEBSITE: WWW.HAWS.CO.COM		PART NUMBER	
ECON. REVISED PERBY:		MODEL(S)	
DRAWN: ECON. 5530 FV		1011/1011HPS	
RM DATE: CHKD:		INSTALLATION	
APPROVED: RM DATE: DP		SIZE: A SHEET: 1 OF 1	
ECON. 02/20/20		REVISION	
SCALE: 1:1		21	




1920 SERIES MOUNTING HOLE LOCATIONS  
(3/8"-16 UNC MOUNTING HARDWARE NOT SUPPLIED)



NOTES:

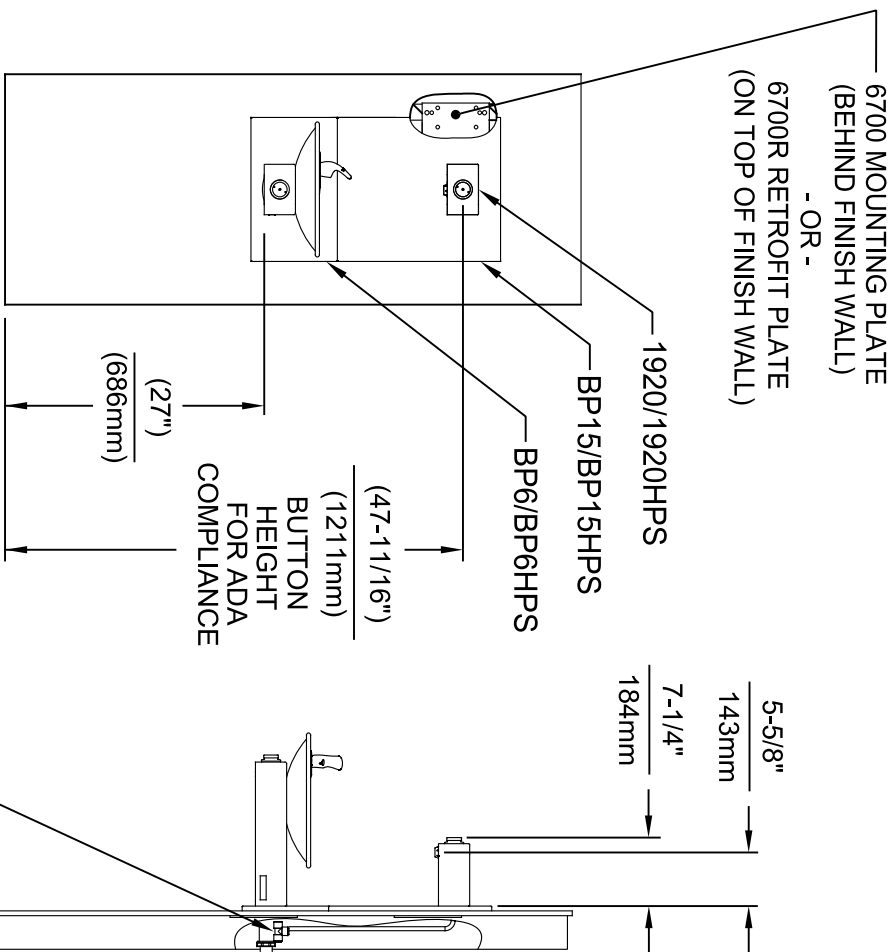
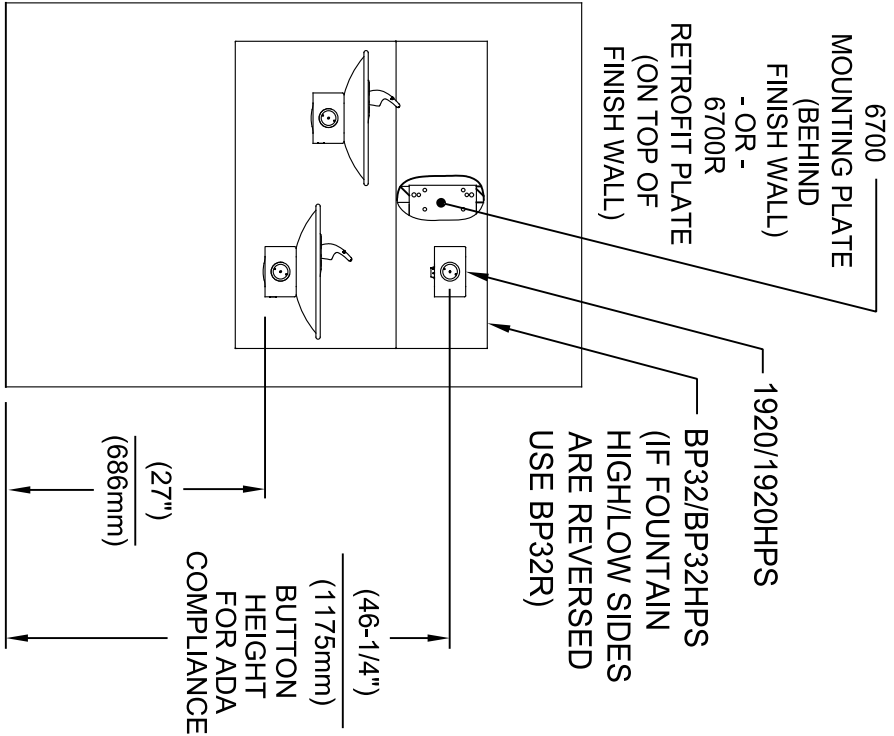
1. SEE SHEETS 2 THRU 7 FOR BOTTLE FILLER ADULT ADA HEIGHT APPLICATIONS AND SHEET 8 FOR CHILD ADA HEIGHT APPLICATIONS.
2. WHEN INSTALLING THIS UNIT, LOCAL, STATE OR FEDERAL CODES SHOULD BE ADHERED TO FOR INSTALLATION LOCATIONS, WASTE & SUPPLY REQUIREMENTS OTHER THAN SHOWN.



**Haws**  
Since 1906

1455 KLEPPLE LANE  
SPARKS, NE/ADA 89431  
(775) 359-4712 FAX (775) 359-424  
E-MAIL: HAWS@HAWS.CO.COM  
WEBSITE: WWW.HAWS.CO.COM

ECON. NO. REVISED PERBY:		MODEL(S)		PART NUMBER	
5081	ECON. 5972	FV		1920/1920HPS/1920W	0510000490.D
DRAWN:	DATE:	CHKD:			REVISION
DS	05/25/16	JC			12
APPROVED:		DATE:	SCALE:	DRAWING TYPE:	SIZE: A1 SHEET 1 OF 8
FV		04/19/24	N/A	INSTALLATION	



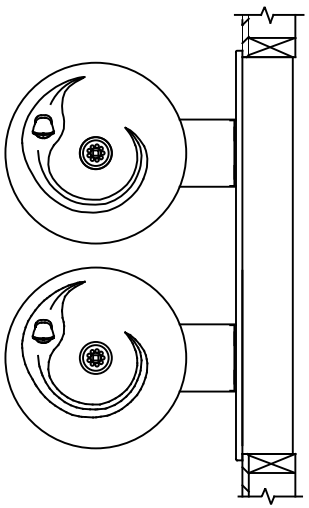
**INSTALLATION ABOVE HAWS 1011 & H1011.8 SERIES**

**INSTALLATION ABOVE HAWS 1001 & H1001.8 SERIES**

\* IF YOUR FOUNTAIN IS THIS STYLE USE THESE DIMENSIONS

1. SEE SEPARATE INSTALLATION DRAWINGS FOR MOUNTING PLATES AND BACK PANELS (SHOWN FOR REFERENCE - NOT SUPPLIED).

2. WHEN INSTALLING THIS UNIT, LOCAL, STATE OR FEDERAL CODES SHOULD BE ADHERED TO FOR INSTALLATION LOCATIONS, WASTE & SUPPLY REQUIREMENTS OTHER THAN SHOWN.



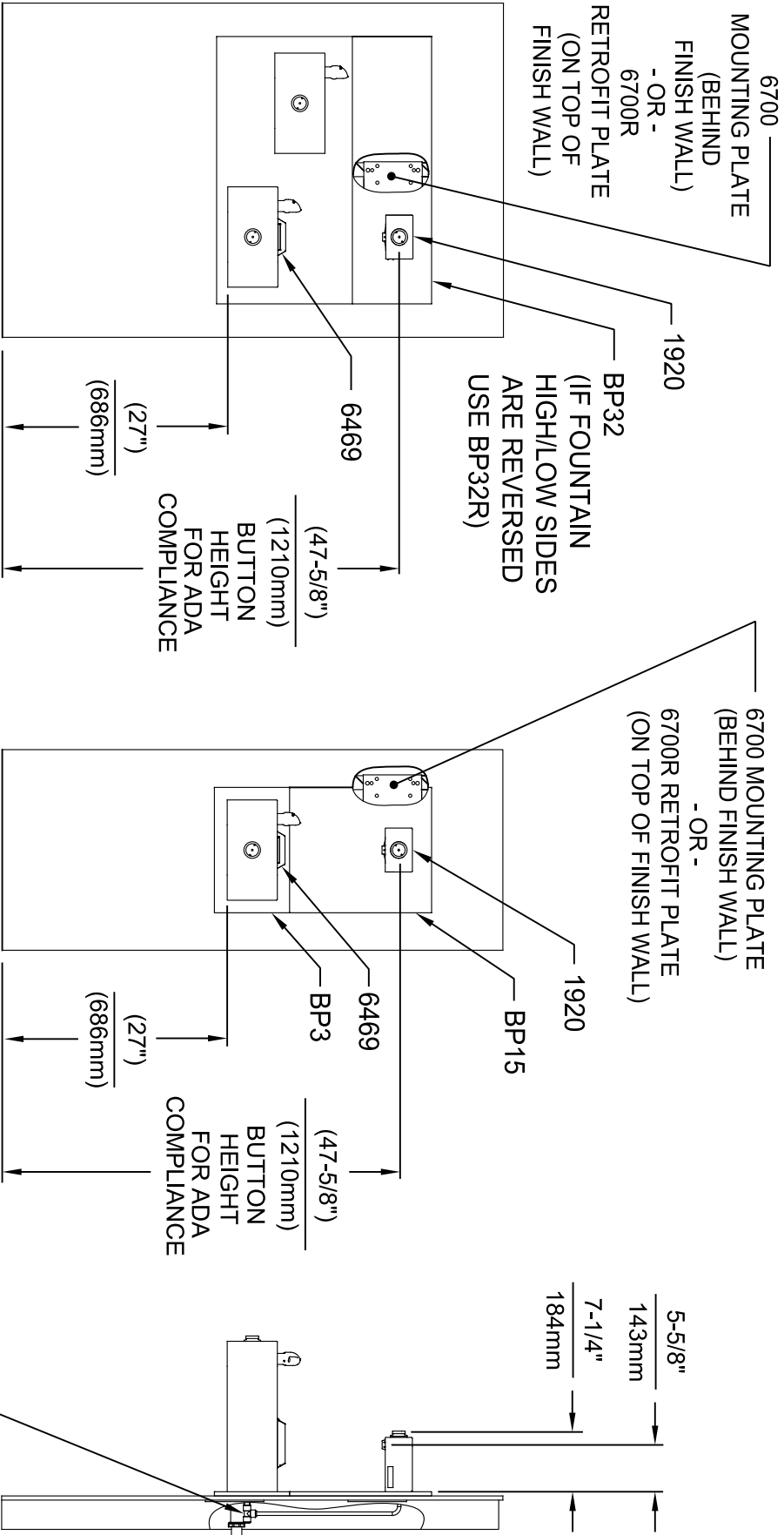
3/8" O.D. SUPPLY TUBING AND 3/8" O.D. PUSH-IN TEE SUPPLIED. (CONNECT TO FOUNTAIN SUPPLY LINE)



**Haws®**  
Since 1906

1455 KLEPPLE LANE  
SPARKS, NE/VADA 89431  
(775) 359-4712 FAX (775) 359-1424  
E-MAIL: HAWS@HAWS.CO.COM  
WEBSITE: WWW.HAWS.CO.COM

ECON. NO. REVISED PERBY:		MODEL(S)		INSTALLATION	
5081	ECON. 5972	FV	1920/1920HPS/1920W	SIZE: A1	SHEET 2 OF 8
DRAWN:	DATE:	CHKD:			
ML	01/30/17	JC			
APPROVED:	DATE:	SCALE:	N/A	DRAWING TYPE:	
FV	04/19/24				
PART NUMBER			REVISION		
0510000490.D			12		



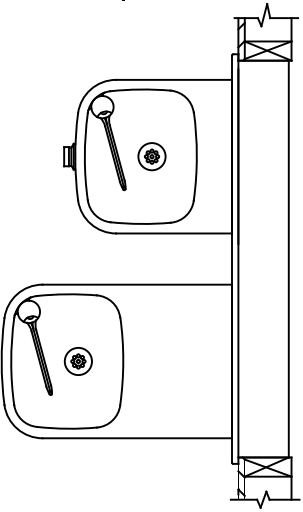
**INSTALLATION ABOVE HAWS 1119 & H1119.8 SERIES**

**INSTALLATION ABOVE HAWS 1109 & H1109.8 SERIES  
SEE SHEET 8 FOR INSTALLATION AT CHILD HEIGHT**

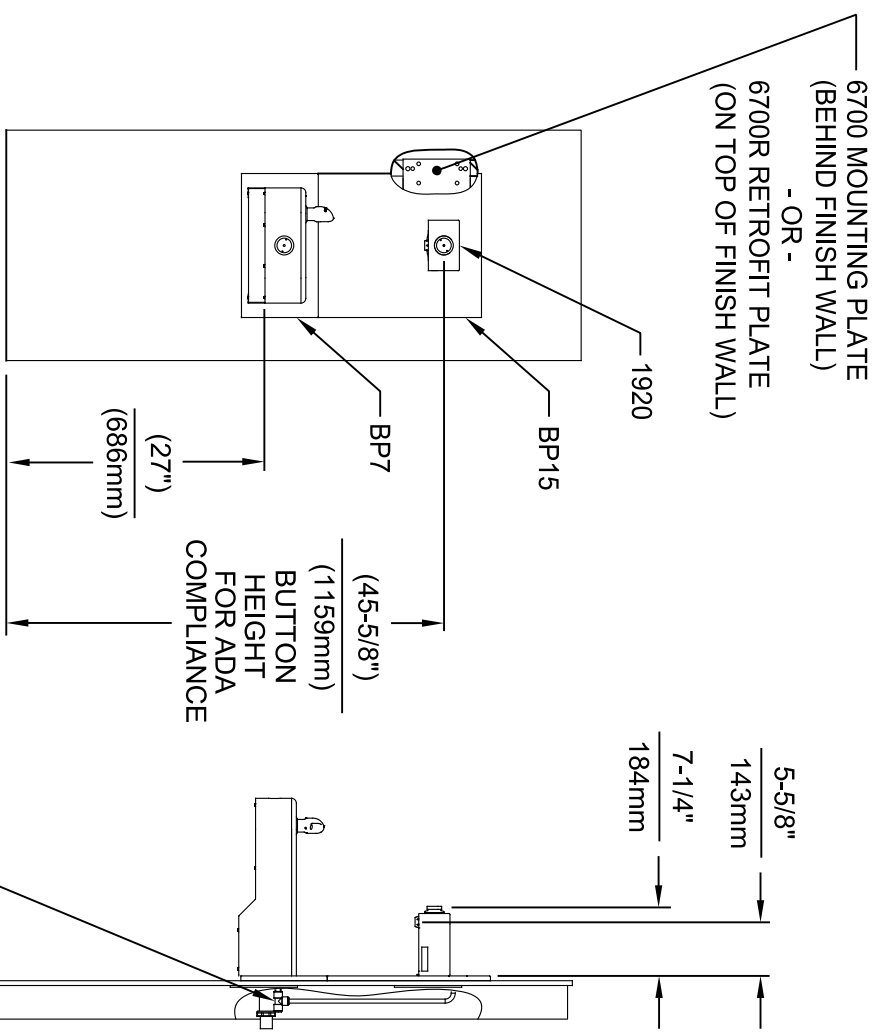
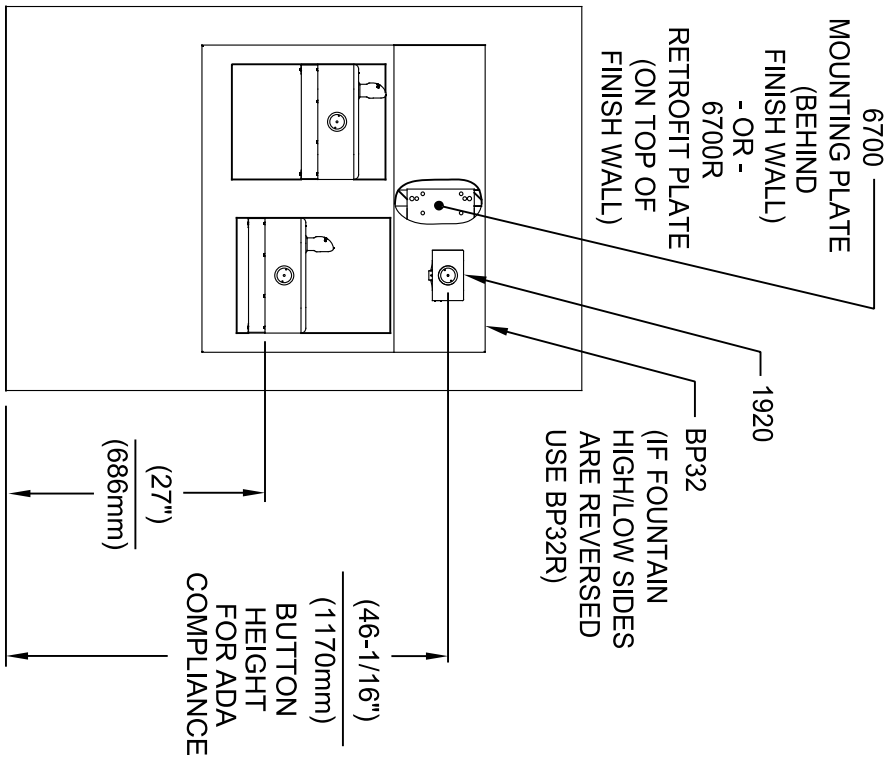
\* IF YOUR FOUNTAIN IS THIS STYLE USE THESE DIMENSIONS

1. SEE SEPARATE INSTALLATION DRAWINGS FOR MOUNTING PLATES AND BACK PANELS (SHOWN FOR REFERENCE - NOT SUPPLIED).

2. WHEN INSTALLING THIS UNIT, LOCAL, STATE OR FEDERAL CODES SHOULD BE ADHERED TO FOR INSTALLATION LOCATIONS, WASTE & SUPPLY REQUIREMENTS OTHER THAN SHOWN.



									
ECON. NO. REVISED PER BY:				MODEL(S)					
5081	ECON. 5972	FV		1920/1920HPS/1920W					
DATE	CHKD.								
01/30/17	JC								
APPROVED: FV				SCALE: N/A	DRAWING TYPE:	INSTALLATION	SIZE: A	SHEET 3	OF 8
								12	
1455 KLEPPER LANE SPARKS, NEVADA 89431 (773) 359-4712 FAX (773) 359-4124 E-MAIL: HAWS@HAWSO.CO.COM WEBSITE: WWW.HAWSO.CO.COM PART NUMBER 0510000490.D REVISION									

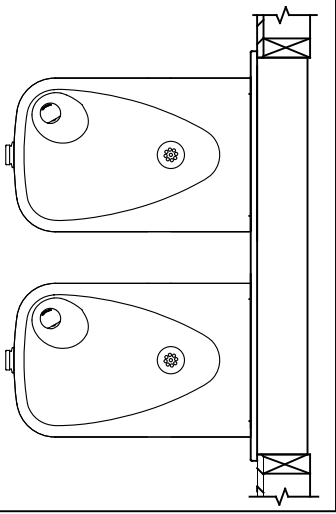


**INSTALLATION ABOVE HAWS 1117L & H1117.8 SERIES**


**INSTALLATION ABOVE HAWS 1107L & H1107.8 SERIES  
SEE SHEET 8 FOR INSTALLATION AT CHILD HEIGHT**

\* IF YOUR FOUNTAIN IS THIS STYLE USE THESE DIMENSIONS

1. SEE SEPARATE INSTALLATION DRAWINGS FOR MOUNTING PLATES AND BACK PANELS (SHOWN FOR REFERENCE - NOT SUPPLIED).
2. WHEN INSTALLING THIS UNIT, LOCAL, STATE OR FEDERAL CODES SHOULD BE ADHERED TO FOR INSTALLATION LOCATIONS, WASTE & SUPPLY REQUIREMENTS OTHER THAN SHOWN.



3/8" O.D. SUPPLY TUBING AND 3/8" O.D. PUSH-IN TEE SUPPLIED. (CONNECT TO FOUNTAIN SUPPLY LINE)

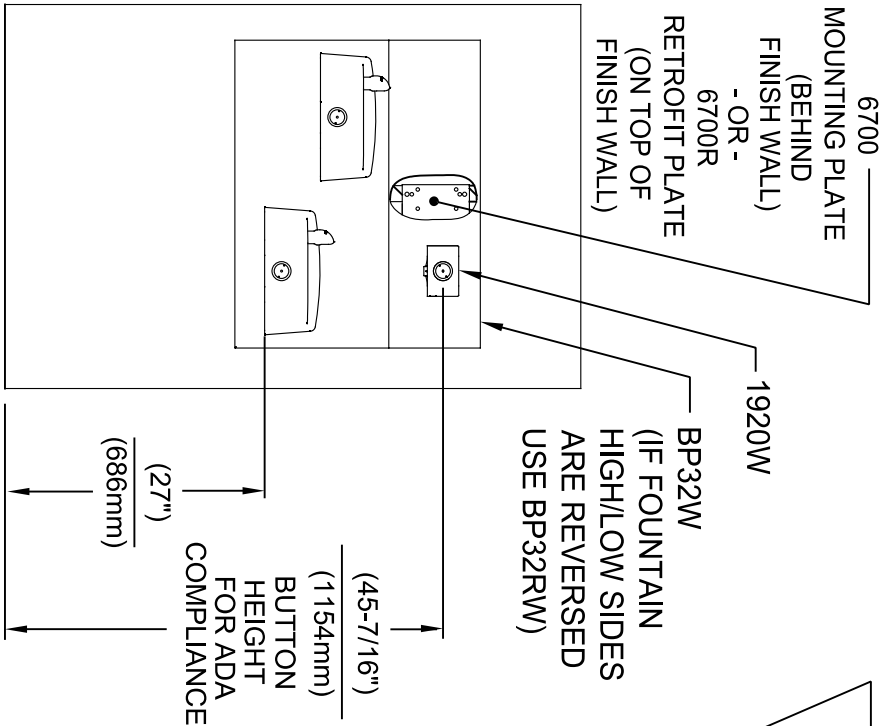


**Haws®**  
Since 1906

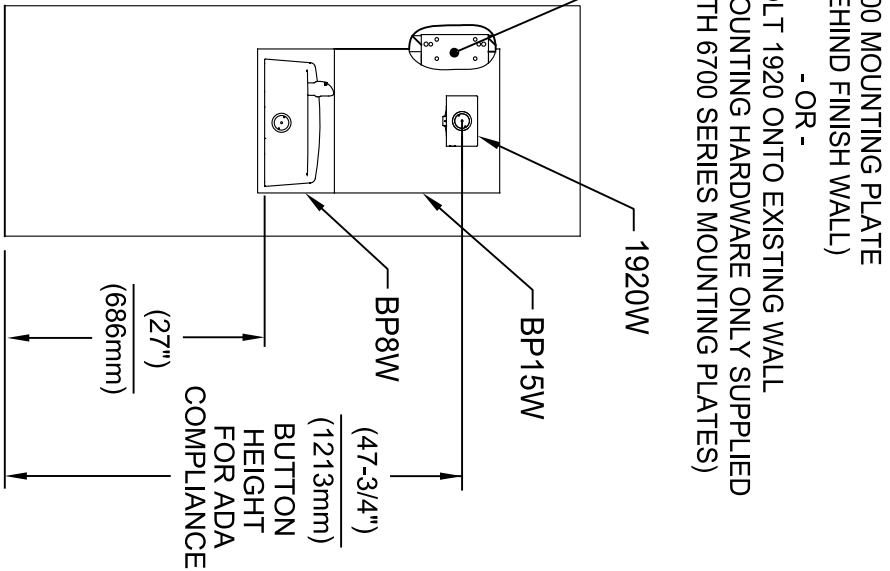
1455 KLEPPLE LANE  
SPARKS, NE/VADA 89431  
(775) 359-4712 FAX (775) 359-1424  
E-MAIL: HAWS@HAWS.CO.COM  
WEBSITE: WWW.HAWS.CO.COM

ECON. REVISED PERBY:		MODEL(S)	
5081	ECON. 5972	1920/1920HPS/1920W	
DRAWN:	DATE:	CHKD:	
ML	01/30/17	JC	
APPROVED:	DATE:	SCALE:	DRAWING TYPE:
FV	04/19/24	N/A	INSTALLATION
SIZE: A1		SHEET 4 OF 8	
REVISION:		12	

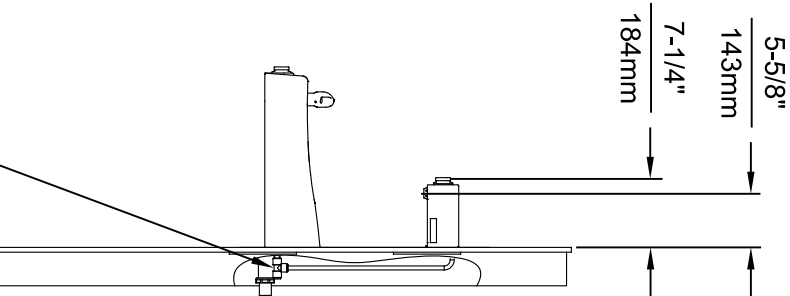
PART NUMBER  
0510000490.D



**INSTALLATION ABOVE HAWS 1501**



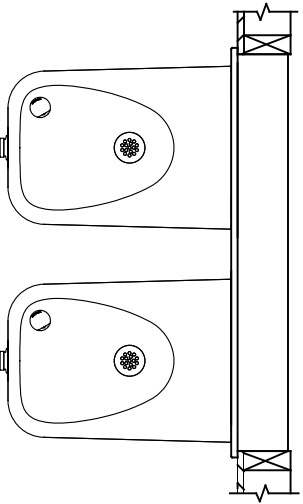
**INSTALLATION ABOVE HAWS 1311  
SEE SHEET 8 FOR INSTALLATION AT CHILD HEIGHT**



\* IF YOUR FOUNTAIN IS THIS STYLE USE  
THESE DIMENSIONS

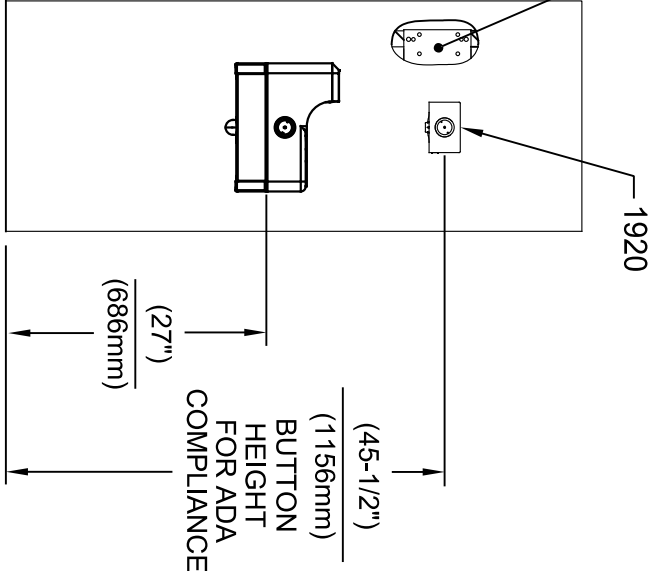
1. SEE SEPARATE INSTALLATION DRAWINGS  
FOR MOUNTING PLATES AND BACK PANELS  
(SHOWN FOR REFERENCE - NOT SUPPLIED).

2. WHEN INSTALLING THIS UNIT, LOCAL,  
STATE OR FEDERAL CODES SHOULD  
BE ADHERED TO FOR INSTALLATION  
LOCATIONS, WASTE & SUPPLY  
REQUIREMENTS OTHER THAN SHOWN.



ECON. NO. REVISED PERBY:		MODEL(S)		1455 KLEPPLE LANE	
5081	ECON. 5972	FV		(775) 359-4712	FAX (775) 359-1424
DATE: 02/13/17	CHKD: JC			E-MAIL: HAWS@HAWS.CO.COM	
APPROVED: FV	DATE: 04/15/24	SCALE: N/A	DRAWING TYPE:	INSTALLATION	SIZE: A1 SHEET 5 OF 8
1920/1920HPS/1920W				PART NUMBER	0510000490.D
				REVISION	12

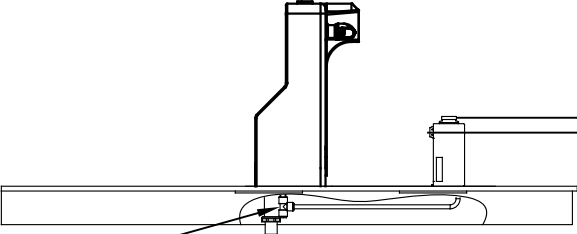
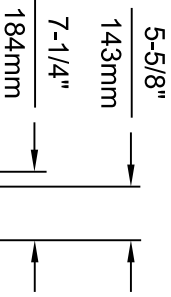
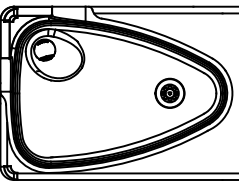
6700 MOUNTING PLATE  
(BEHIND FINISH WALL)  
- OR -  
BOLT 1920 ONTO EXISTING WALL  
(MOUNTING HARDWARE ONLY SUPPLIED  
WITH 6700 SERIES MOUNTING PLATES)



**INSTALLATION ABOVE HAWS 1047**

\* IF YOUR FOUNTAIN IS THIS STYLE USE  
THESE DIMENSIONS

1. SEE SEPARATE INSTALLATION DRAWINGS  
FOR MOUNTING PLATES AND BACK PANELS  
(SHOWN FOR REFERENCE - NOT SUPPLIED).
2. WHEN INSTALLING THIS UNIT, LOCAL,  
STATE OR FEDERAL CODES SHOULD  
BE ADHERED TO FOR INSTALLATION  
LOCATIONS, WASTE & SUPPLY  
REQUIREMENTS OTHER THAN SHOWN.



3/8" O.D. SUPPLY  
TUBING AND 3/8" O.D.  
PUSH-IN TEE SUPPLIED.  
(CONNECT TO FOUNTAIN  
SUPPLY LINE)



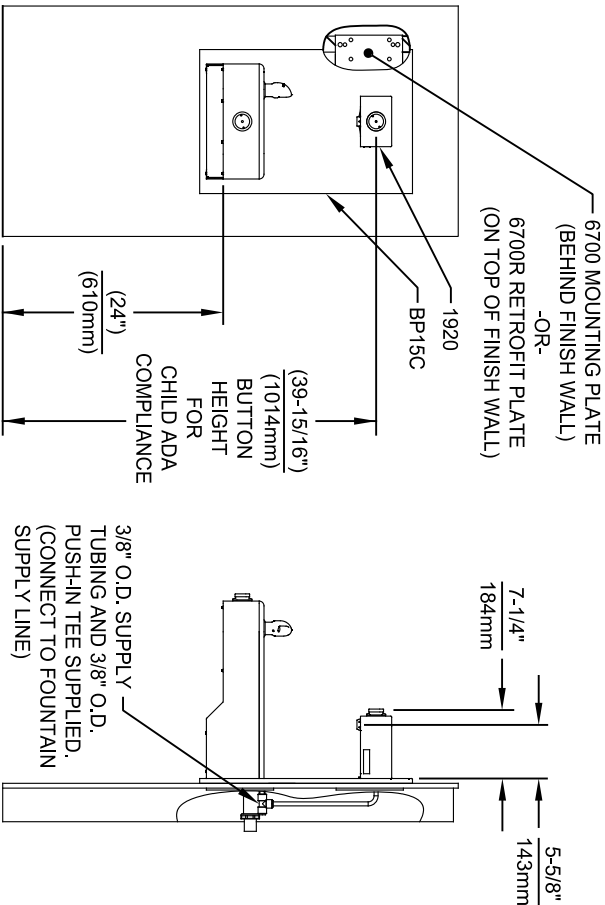
**Haws**  
Since 1906

1455 KLEPPLE LANE  
SPARKS, NEVADA 89431  
(775) 359-4712 FAX (775) 359-7424  
E-MAIL: [HAWS@HAWS.CO.COM](mailto:HAWS@HAWS.CO.COM)  
WEBSITE: [WWW.HAWS.CO.COM](http://WWW.HAWS.CO.COM)

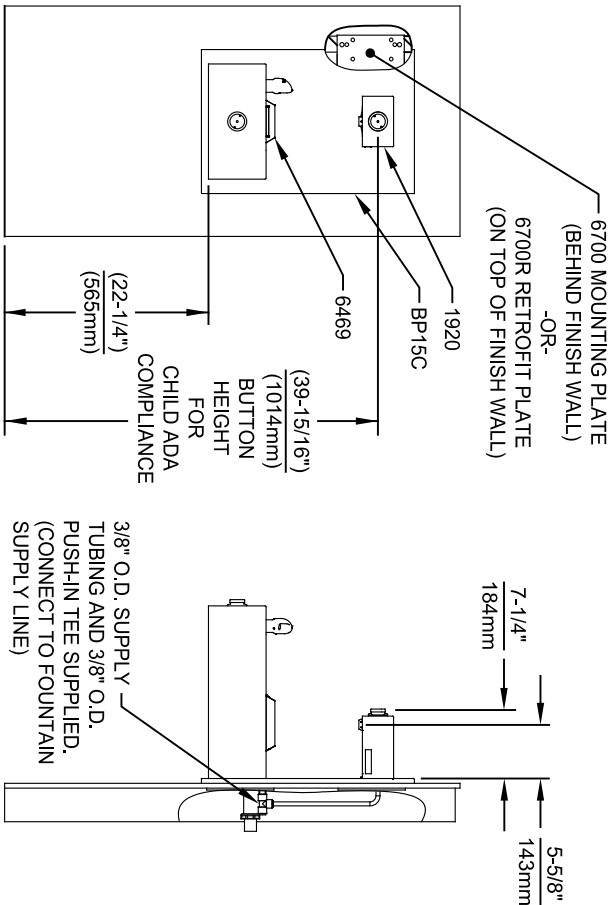
EON NO. REVISED PERBY:		MODEL(S)		INSTALLATION	
5220	EON: 5972	FV	1920/1920HPS/1920W	SIZE: A1	SHEET 6 OF 8
DRAWN:	DATE:	CHKD:			
JP	09/14/17	JC			
APPROVED:	DATE:	SCALE:	DRAWING TYPE:		
FV	04/19/24	N/A			



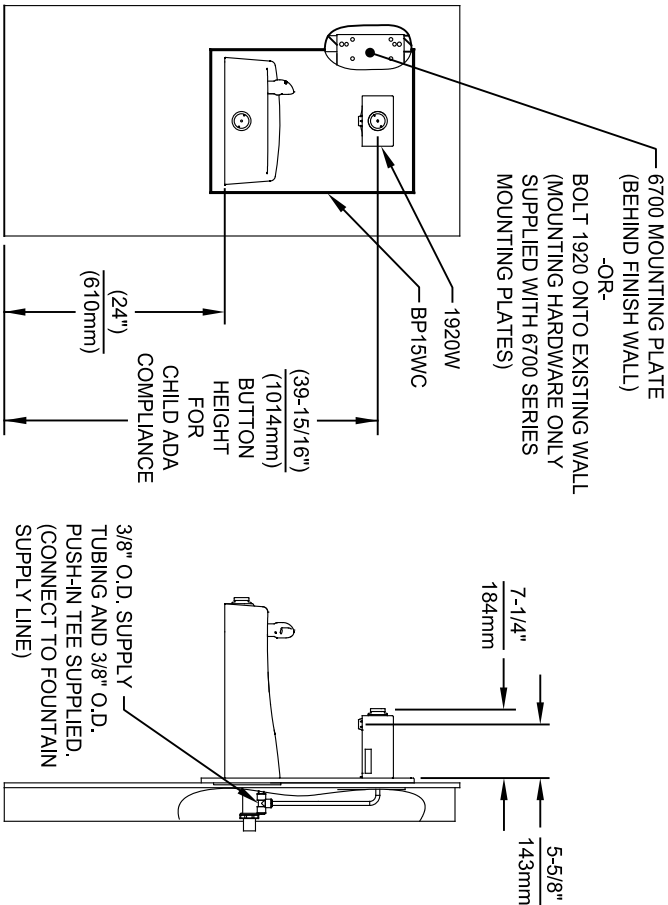




INSTALLATION ABOVE HAWS 1107L & H1107.8 SERIES



INSTALLATION ABOVE HAWS 1109, 1109.14 & H1109.8 SERIES



INSTALLATION ABOVE HAWS 1311

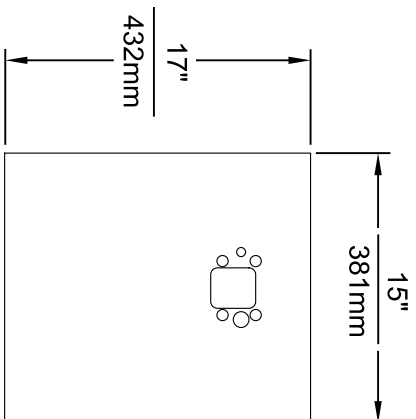
- NOTES:
- HEIGHT DIMENSIONS SHOWN ARE FOR CHILD ADA APPLICATIONS:
    - BOTTLE FILLER HEIGHT AT 40" MAX.
    - DRINKING FOUNTAIN BUBBLER HEIGHT AT 30" MAX.
    - (SEE SHEETS 3, 4 & 5 FOR ADULT ADA HEIGHT DIMENSIONS)
  - SEE SEPARATE INSTALLATION DRAWINGS FOR MOUNTING PLATES AND BACK PANELS (SHOWN FOR REFERENCE - NOT SUPPLIED).
  - WHEN INSTALLING THIS UNIT, LOCAL, STATE OR FEDERAL CODES SHOULD BE ADHERED TO FOR INSTALLATION LOCATIONS, WASTE & SUPPLY REQUIREMENTS OTHER THAN SHOWN.



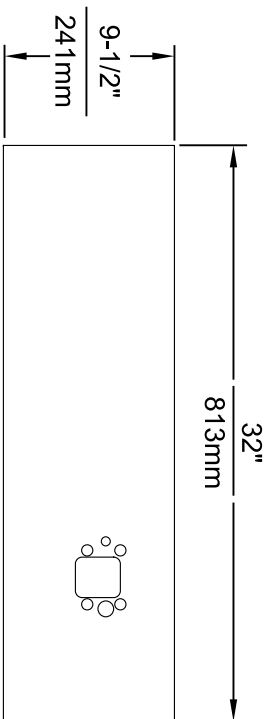
**Haws®**  
Since 1906

1455 KLEPPLE LANE  
SPARKS, NEVADA 89431  
(775) 359-4712 FAX (775) 359-1424  
E-MAIL: HAWS@HAWS.CO.COM  
WEBSITE: WWW.HAWS.CO.COM

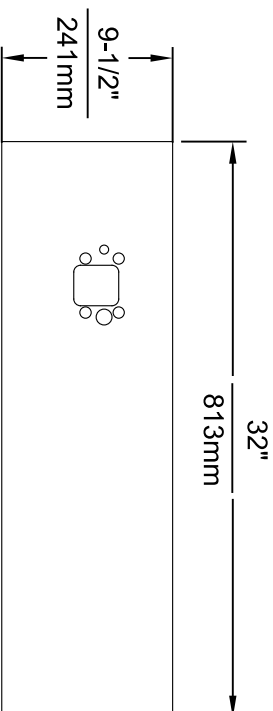
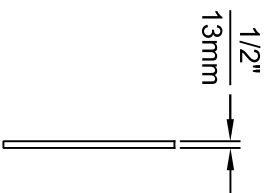
ECON. REVISED PERBY:		MODEL(S)	
9807	ECON. 9972	1920/1920HPS/1920W	
DRAWN:	DATE:	CHKD:	
FV	01/26/24	JC	
APPROVED:	DATE:	SCALE:	DRAWING TYPE:
FV	04/19/24	N/A	INSTALLATION
SIZE: A		SHEET 8 OF 8	
PART NUMBER		REVISION	
0510000490.D		12	



**MODEL BP15 / BP15HPS / BP15W**

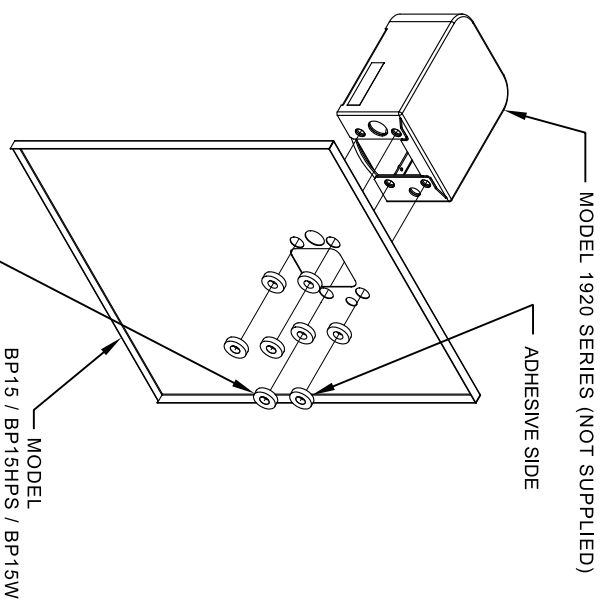


**MODEL BP32 / BP32HPS / BP32W**



**MODEL BP32R / BP32RW**


- NOTES:
1. WHEN INSTALLING THIS UNIT, LOCAL, STATE OR FEDERAL CODES SHOULD BE ADHERED TO.
  2. BOTTLE FILLER SHOWN FOR REFERENCE ONLY (NOT SUPPLIED).



## **INSTALLATION OVER SINGLE FOUNTAIN**

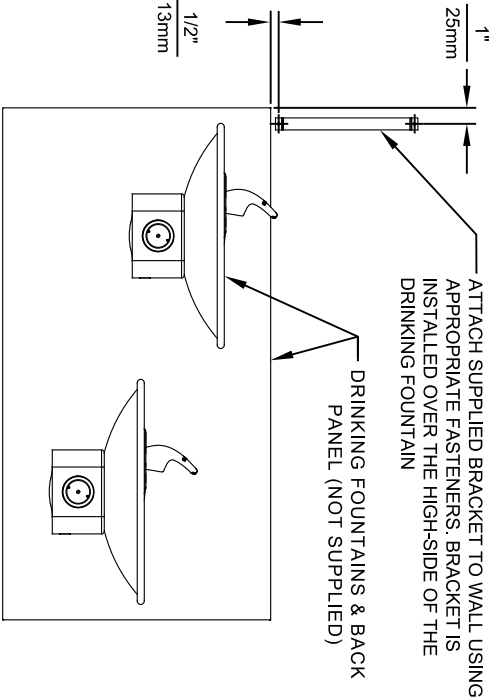
SHOWN FROM REAR

(SEE SHEET 3 OF 3 FOR INSTALLATION OF SPACERS  
ON COMBINATION BOTTLE FILLER AND FOUNTAIN  
BACK PANELS FOR CHILD HEIGHT APPLICATIONS -  
MODELS BP15C & BP15WC)

				1455 KLEPPE LANE SPARKS, NEVADA 89431 (775) 359-4712 FAX (775) 359-1424 E-MAIL: HAWS@HAWSOCO.COM WEBSITE: WWW.HAWSOCO.COM			
ECON. NO. REVISED PERBY:				MODEL(S)			
5061		ECON. 5972		FV		DRAWING, BACK PANEL, SPACER INSTALLATION	
DRAWN:		DATE:		CHKD:		FOR BP15 SERIES & BP32 SERIES, BOTTLE FILLER	
ML		06/27/16		JC		PART NUMBER	
APPROVED:		DATE:		SCALE:		REVISION	
FV		04/19/24		1:1		5	
INSTALLATION				SIZE: A1 SHEET: 1 OF 3			

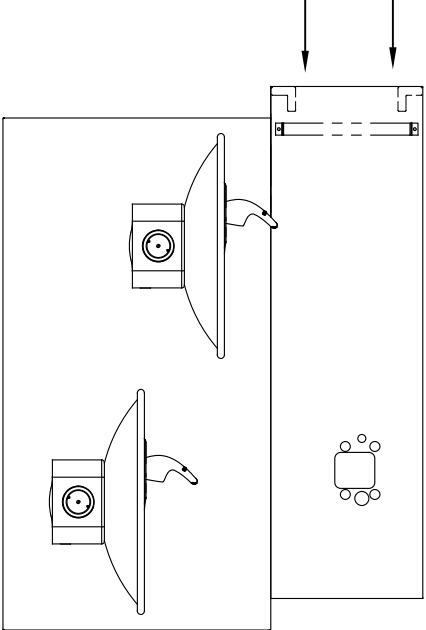
**STEP 1**

ATTACH SUPPLIED BRACKET TO WALL USING APPROPRIATE FASTENERS. BRACKET IS INSTALLED OVER THE HIGH-SIDE OF THE DRINKING FOUNTAIN



**STEP 2**

PLACE THE BACKPLATE AGAINST THE WALL AND SLIDE SIDEWAYS SO THE TABS CATCH UNDER THE BRACKET.

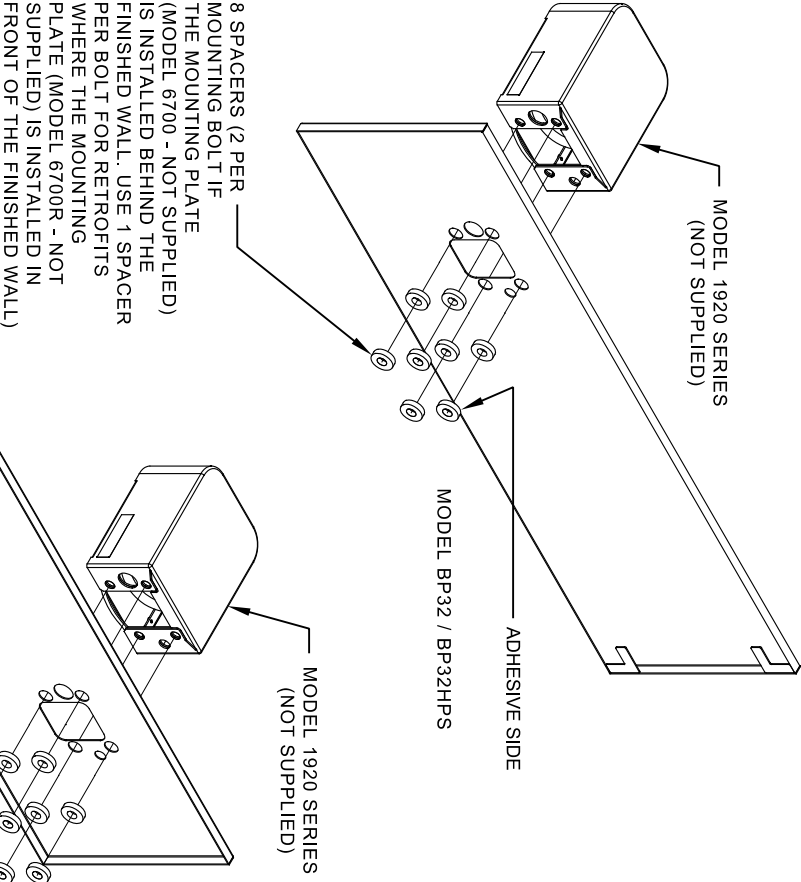


**STEP 3**

INSTALL THE BOTTLE FILLER (NOT SUPPLIED) PER THE INSTRUCTIONS SUPPLIED WITH THE UNIT.

**NOTES:**

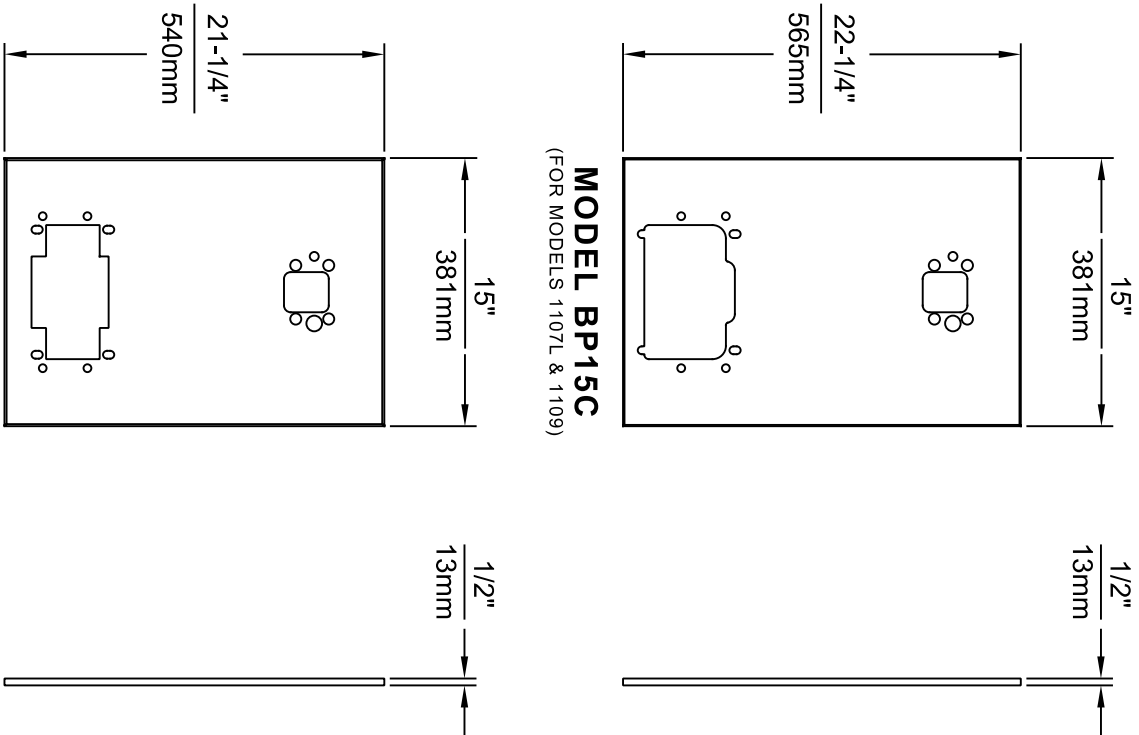
1. WHEN INSTALLING THIS UNIT, LOCAL, STATE OR FEDERAL CODES SHOULD BE ADHERED TO.
2. BOTTLE FILLERS, DRINKING FOUNTAINS & DRINKING FOUNTAIN BACK PANELS SHOWN FOR REFERENCE ONLY (NOT SUPPLIED).



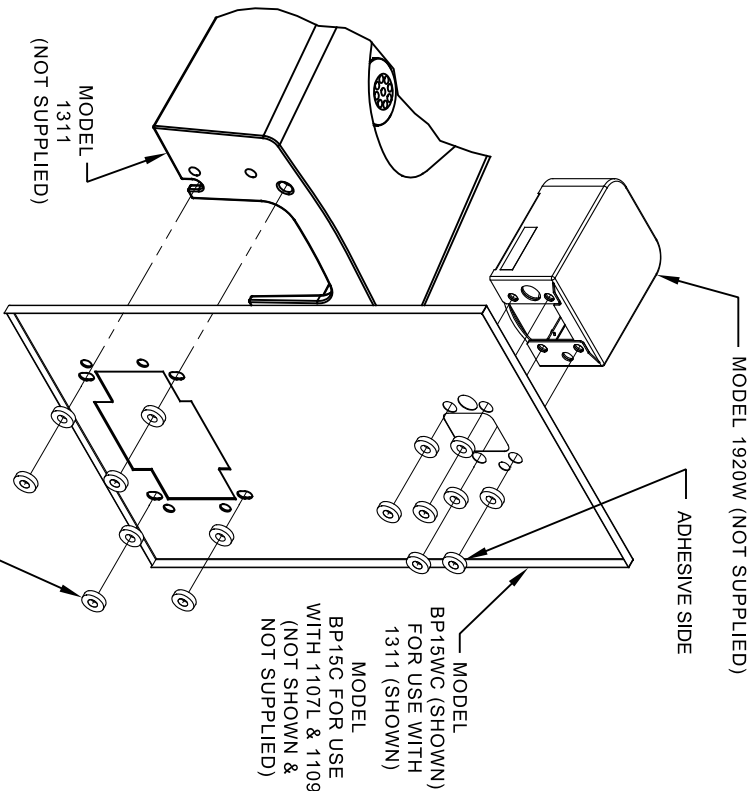
**INSTALLATION OVER DOUBLE FOUNTAIN**

SHOWN FROM REAR

				1455 KLEPPLE LANE SPARKS, NEVADA 89431 (775) 359-4712 FAX (775) 359-1424 E-MAIL: HAWS@HAWS.CO.COM WEBSITE: WWW.HAWS.CO.COM			
ECONOMY REVISED PERBY:				MODEL(S)			
DRAWN: 5081 ECON 5972 FV				DRAWING, BACK PANEL, SPACER INSTALLATION			
DATE: 02/02/17 JC				FOR BP15 SERIES & BP32 SERIES, BOTTLE FILLER			
APPROVED: FV				PART NUMBER			
DATE: 04/19/24				0510000493			
SCALE: 1:1				REVISION			
DRAWING TYPE: INSTALLATION				5			
SIZE: A1				SHEET 2 OF 3			




- NOTES:
1. WHEN INSTALLING THIS UNIT, LOCAL, STATE OR FEDERAL CODES SHOULD BE ADHERED TO.
  2. BOTTLE FILLER AND DRINKING FOUNTAIN SHOWN FOR REFERENCE ONLY (NOT SUPPLIED).

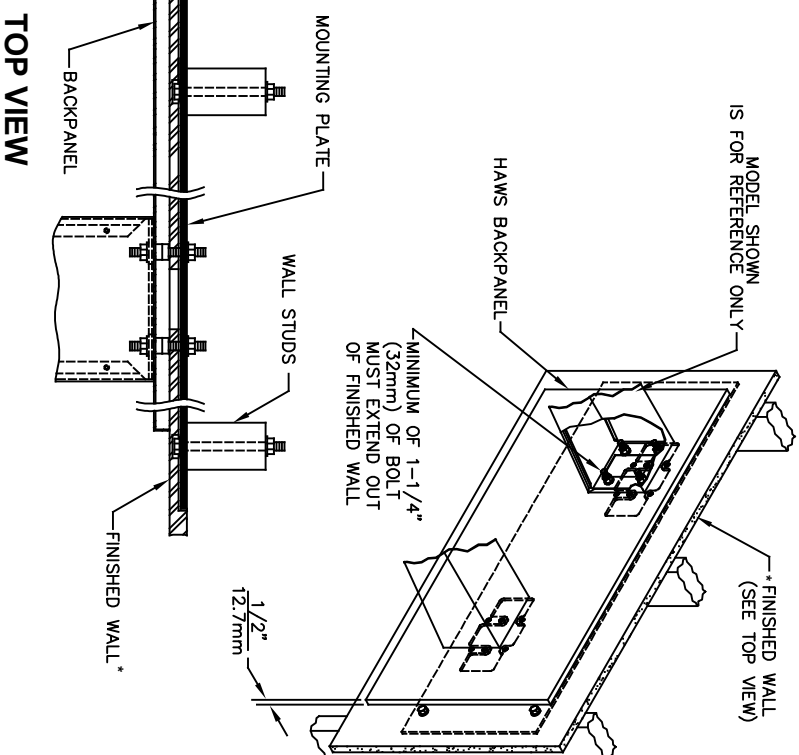
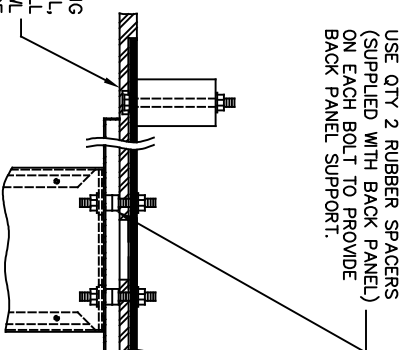
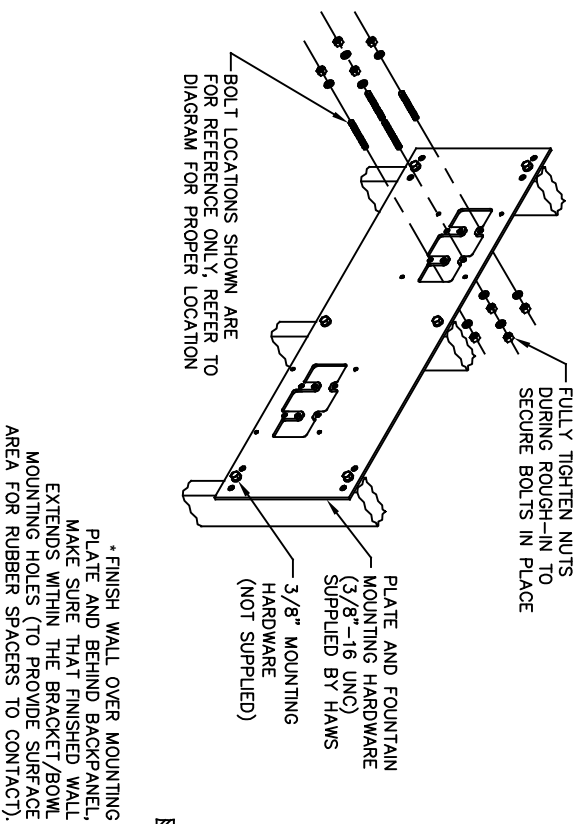
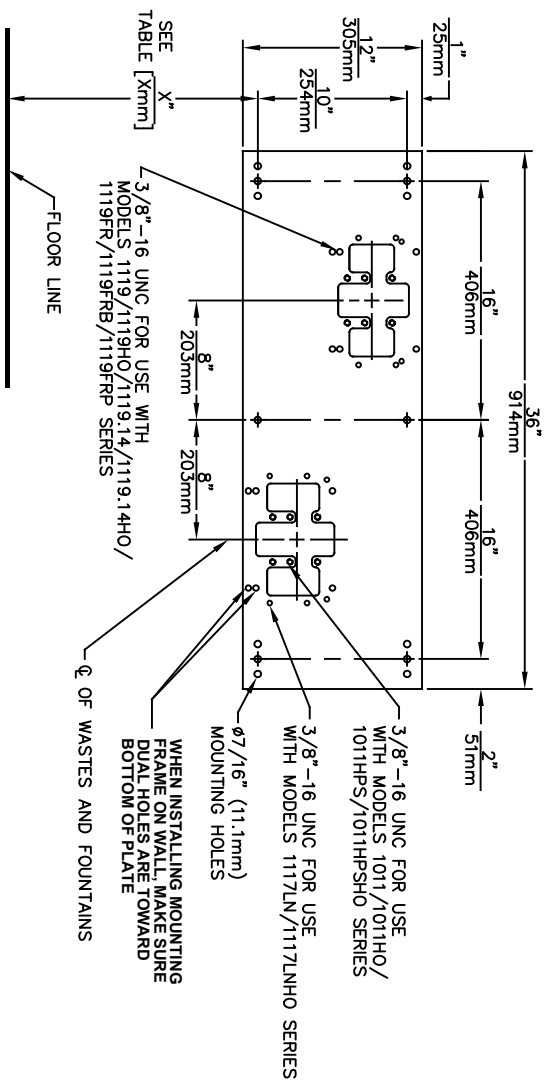


## ONE PIECE INSTALLATION ON SINGLE FOUNTAIN

SHOWN FROM REAR

(MODEL BP15C & BP15WC ARE COMBINATION BOTTLE  
FILLER AND FOUNTAIN BACK PANELS USED FOR CHILD  
HEIGHT APPLICATIONS ONLY ON MODELS 1107L, 1109 & 1311  
- BOTTLE FILLER & DRINKING FOUNTAIN NOT SUPPLIED)

 <b>Since 1906</b>				1455 KLEPPER LANE SPARKS, NEVADA 89431 (775) 359-4712 FAX (775) 359-424 E-MAIL: HAWS@HAWS.CO.COM WEBSITE: WWW.HAWS.CO.COM			
ECON. REVISED PER BY:				MODEL(S)			
9972	ECON. 9972	FV		DRAWING, BACK PANEL, SPACER INSTALLATION			
DRAWN:	DATE:	CHKD:		FOR BP15 SERIES & BP22 SERIES, BOTTLE FILLER			
12/13/23	04/19/24	JC					
APPROVED:	DATE:						
FV	12/13/23						
SCALE: 1:1				DRAWING TYPE:		INSTALLATION	
SIZE: A				SHEET: 3		OF 3	
PART NUMBER				REVISION			
0510000493				5			



MODEL	
DIMENSION	1011/HO/PS
"X"	25-1/2" [648mm]
LOWER SUPPLY	28-3/4" [730mm]
LOWER WASTE	27-7/8" [708mm]
UPPER SUPPLY	33-3/4" [857mm]
UPPER WASTE	32-7/8" [835mm]
MODEL	
DIMENSION	1119/HO
"X"	27-5/8" [702mm]
LOWER SUPPLY	29-5/8" [752mm]
LOWER WASTE	30-3/4" [781mm]
UPPER SUPPLY	35-3/8" [905mm]
UPPER WASTE	36-1/2" [927mm]
MODEL	
DIMENSION	1119FR
"X"	27-5/8" [702mm]
SUPPLY	SEE FREEZE
WASTE	VALVE ROUGH-IN

MODEL	
DIMENSION	1117LN/HO
"X"	27" [686mm]
LOWER SUPPLY	29-1/2" [749mm]
LOWER WASTE	29-1/4" [743mm]
UPPER SUPPLY	35-1/2" [902mm]
UPPER WASTE	35-1/4" [895mm]

## CAUTION


REGARDING CONCRETE/MASONRY WALL MOUNTING: DO NOT SECURE MOUNTING PLATE TO SAME SIDE OF WALL AS FOUNTAIN. AVOID COMPROMISING INTEGRITY OF WALL WHEN ANCHORING FOUNTAIN. IT IS RECOMMENDED THAT INSTALLER CALL TECHNICAL SUPPORT IF THERE ARE ANY QUESTIONS AS TO HOW TO OBTAIN A PROPER ANCHOR IN CONCRETE/MASONRY WALLS. 1-800-766-5612



1455 KLEPPE LANE  
SPARKS, NEVADA 89431  
(775) 359-4712 FAX (775) 359-7424  
E-MAIL: [HAWS@HAWS.CO.COM](mailto:HAWS@HAWS.CO.COM)  
WEBSITE: [WWW.HAWSCO.COM](http://WWW.HAWSCO.COM)

6700 INDEX

INSTALLATION WITH:	TYPICAL USES	SEE SHEET...
GENERAL INSTALLATION	IMPORTANT INFORMATION FOR ALL INSTALLATIONS	3 OF 6
1001 BOWLS	HAWS SERIES 1001X, H1001.8X	3 OF 6
1107 BOWLS	HAWS SERIES 1107L, H1107.8	3 OF 6
1109 BOWLS	HAWS SERIES 1109X, H1109.8X	3 OF 6
1047 BOWLS	HAWS SERIES 1047	4 OF 6
1011 BOWLS	HAWS SERIES 1011X, H1011.8X	4 OF 6
1119 BOWLS	HAWS SERIES 1119X, H1119.8X	4 OF 6
1117 BOWLS	HAWS SERIES 1117X, H1117.8X	5 OF 6
1311 BOWLS	HAWS SERIES 1311	5 OF 6
1501 BOWLS	HAWS SERIES 1501	5 OF 6
CHILD HEIGHT	HAWS 1107PCH, 1109PCH, 1311PCH	6 OF 6



**Haws**

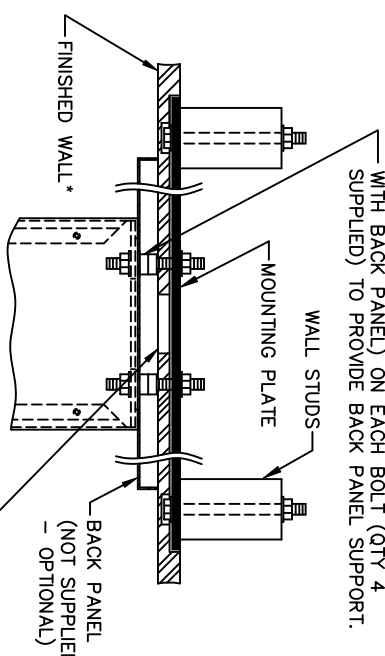
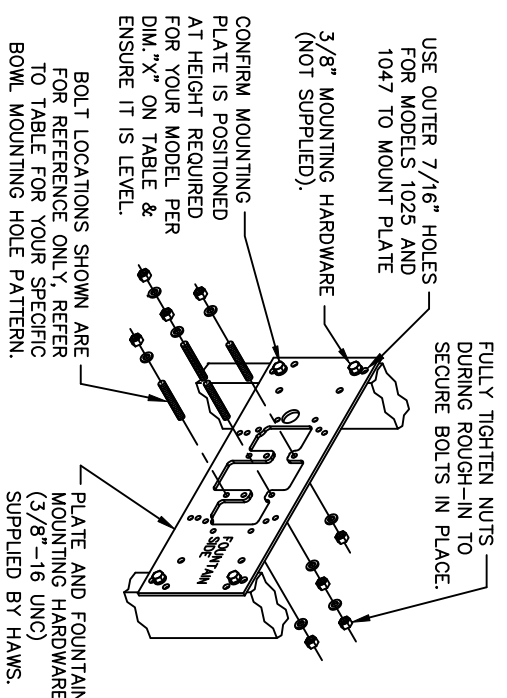
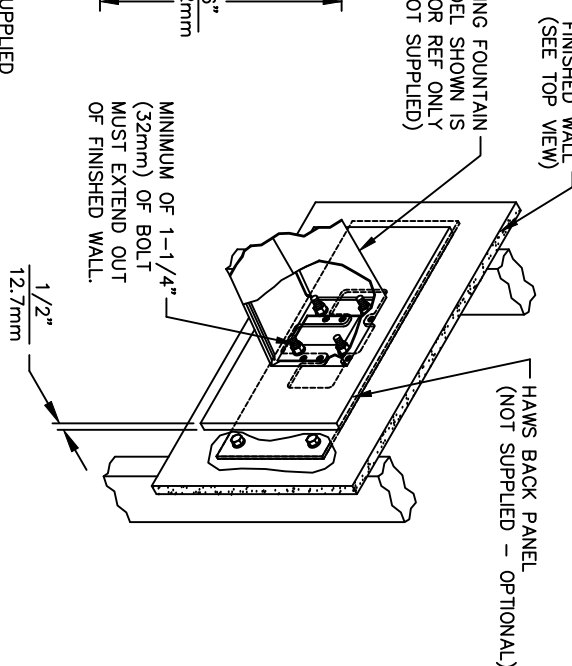
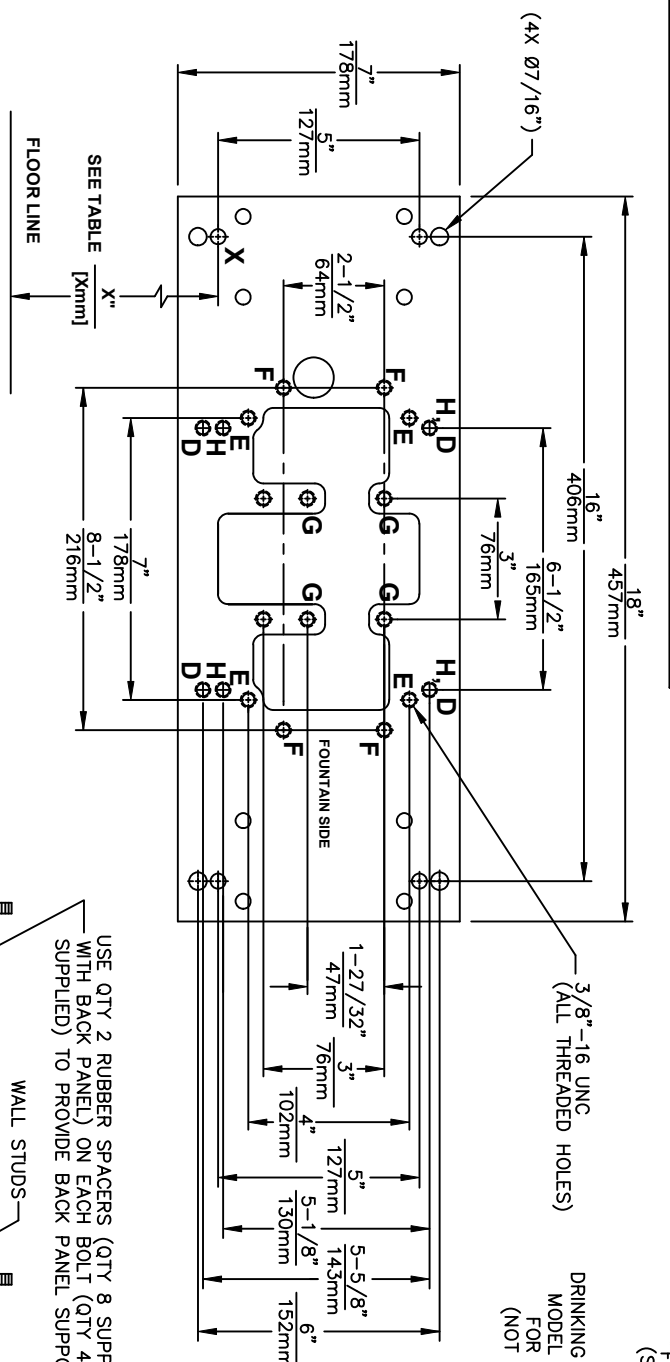
Since 1906

1455 KLEPPE LANE  
SPARKS, NEVADA 89431  
(775) 359-4712 FAX (775) 359-7424  
E-MAIL: HAWS@HAWS.CO.COM  
WEBSITE: WWW.HAWS.CO.COM

ECN NO. REVISED PER BY:  
DRAWN: JG DATE: JG  
JG 10/03/24 JG

MODEL(S)  
67/00

PART NUMBER  
0002080016  
REVISION  
25




DRINKING FOUNTAIN (ONLY) AT 27" ADULT HEIGHT (SEE SPECIFIC MODEL O&M'S FOR OTHER HEIGHTS)		
MODEL	USE BOWL MTG. HOLE PATTERN	USE "X" DIM. BELOW TO POSITION MOUNTING PLATE HOLE "X"
1001	"G"	25-3/8" [645mm]
1025	"D"	28-1/8" [714mm]
1047	"E"	24-3/8" [619mm]
1105	"H"	34-5/16" [872mm]
1107L	"F"	26-3/16" [665mm]
1109	"H"	27-5/16" [694mm]
1109.14	"H"	27-5/16" [694mm]
1109FR	"H"	27-5/16" [694mm]
1311	"E"	26-3/4" [679mm]
WASTE DRIP TRAY (ONLY) AT 27" ADULT HEIGHT		
6468	"G"	25-3/8" [645mm]
1922	"G"	25-3/8" [645mm]

**TOP VIEW**  
**6700 MOUNTING PLATE**  
**FOR USE WITH**  
**DRINKING FOUNTAINS**  
**AND WASTE DRIP TRAYS**  
**AT 27" ADULT HEIGHT**  
**(SEE SHEETS 2 - 5 FOR USE WITH**  
**BOTTLE FILLER 1920/1920HO SERIES**  
**AND CHILD HEIGHT APPLICATIONS)**

**\*FINISH WALL OVER MOUNTING PLATE AND BEHIND BACK PANEL. MAKE SURE THAT FINISHED WALL EXTENDS WITHIN THE BRACKET/BOWL MOUNTING HOLES (TO PROVIDE SURFACE AREA FOR RUBBER SPACERS TO CONTACT).**

**CAUTION**

REGARDING CONCRETE/MASONRY WALL MOUNTING: DO NOT SECURE MOUNTING PLATE TO SAME SIDE OF WALL AS FOUNTAIN. AVOID COMPROMISING INTEGRITY OF WALL WHEN ANCHORING FOUNTAIN. IT IS RECOMMENDED THAT INSTALLER CALL TECHNICAL SUPPORT IF THERE ARE ANY QUESTIONS AS TO HOW TO OBTAIN A PROPER ANCHOR IN CONCRETE/MASONRY WALLS. 1-800-766-5612



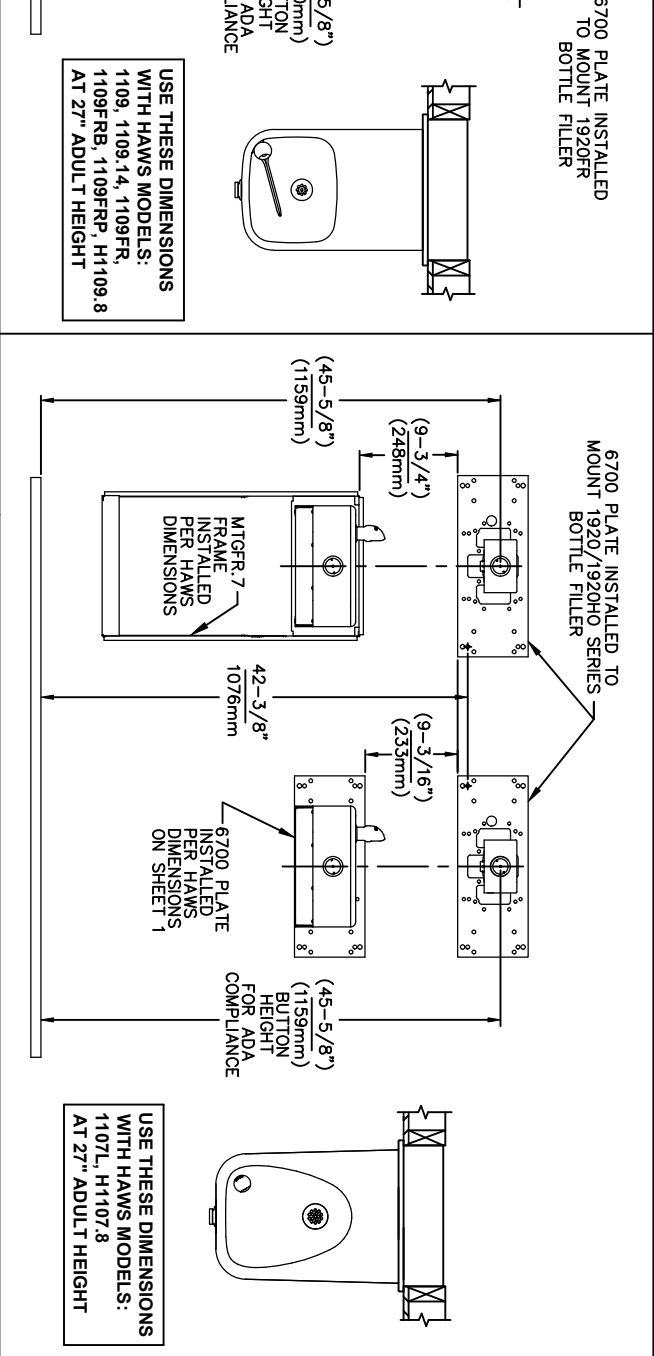
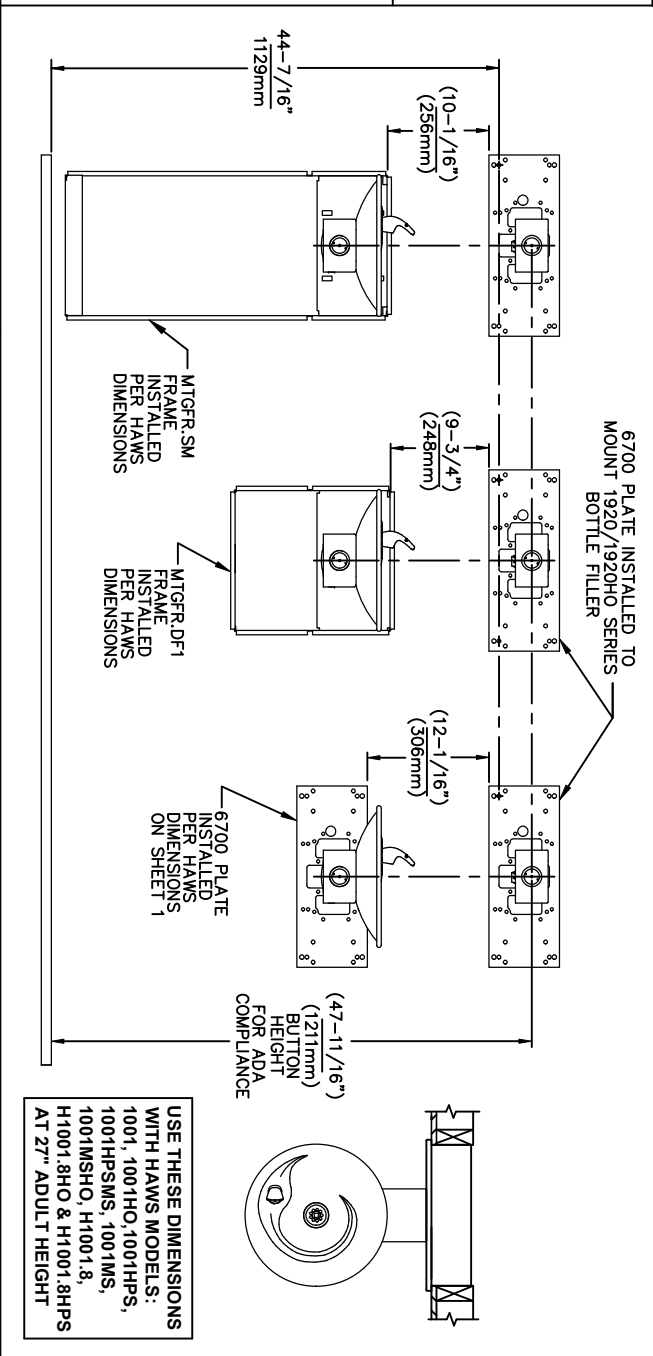
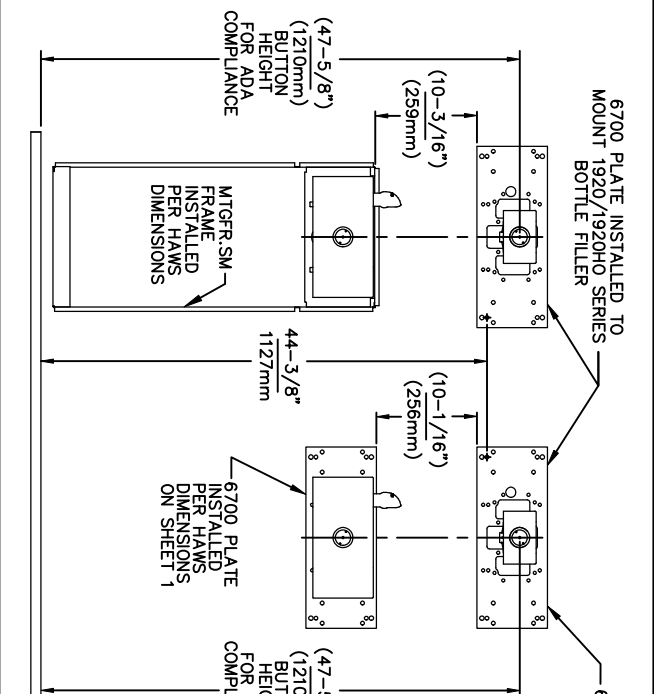
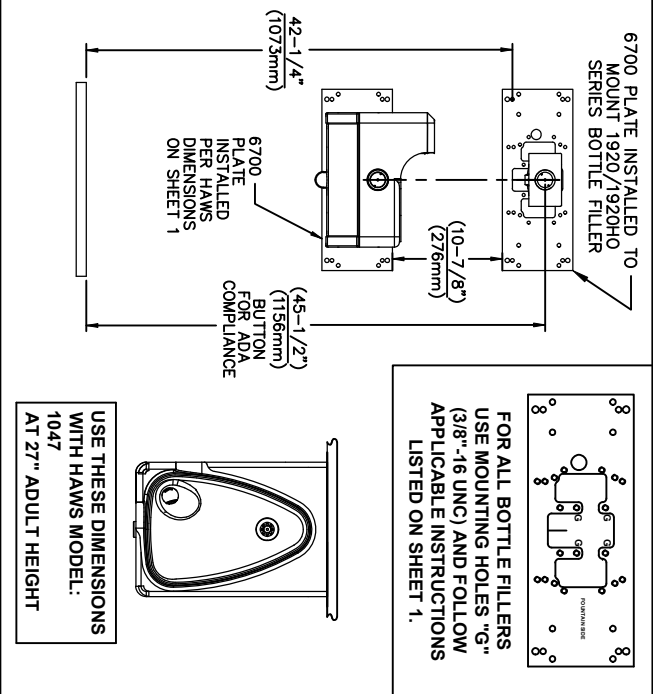
**Haws®**  
Since 1906

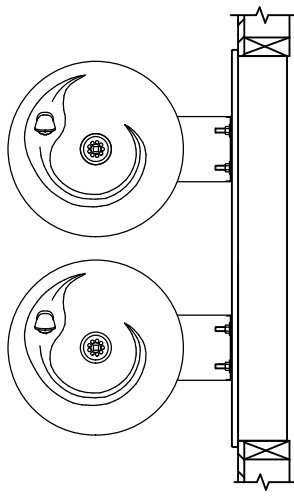
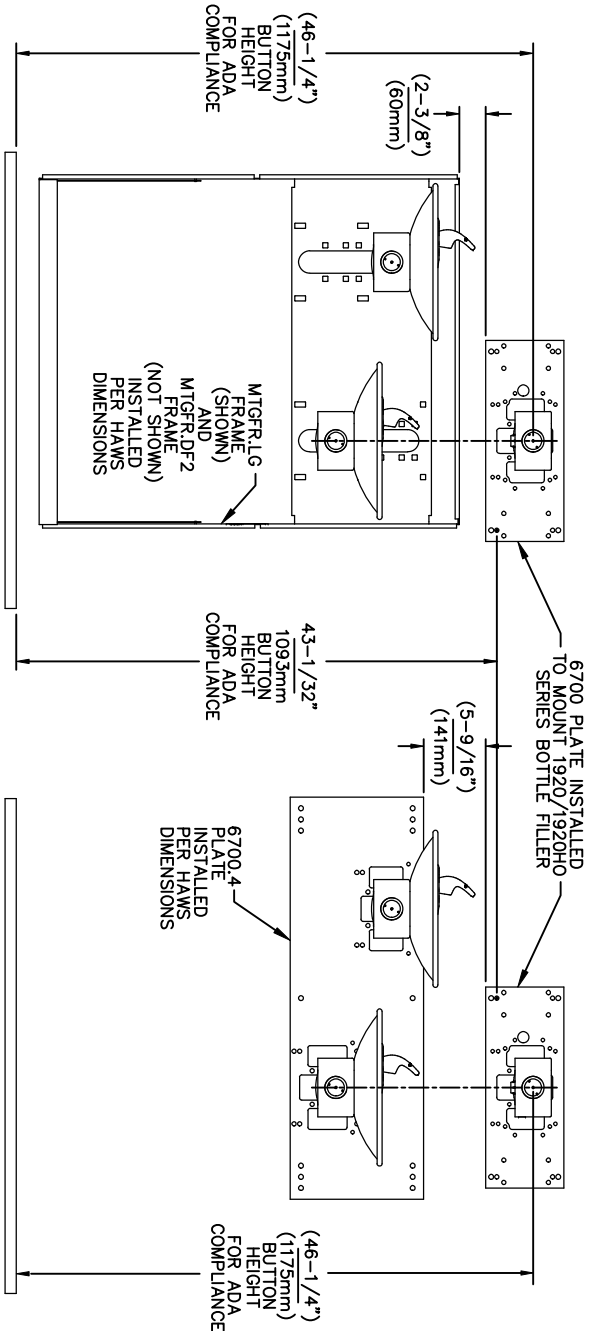
1455 KLEPPE LANE  
SPARKS, NEVADA 89431  
(775) 359-4712 FAX (775) 359-7424  
E-MAIL: HAWS@HAWS.CO.COM  
WEBSITE: WWW.HAWS.CO.COM

ECN NO. REVISED PERBY: MODEL(S)  
DRAWN: ECN 6131 PV  
C.L. 09-03-03 JG  
APPROVED: DATE: 11/26/24 SCALE: N/A DRAWING TYPE: INSTALLATION SIZE: A SHEET: 2 OF: 6

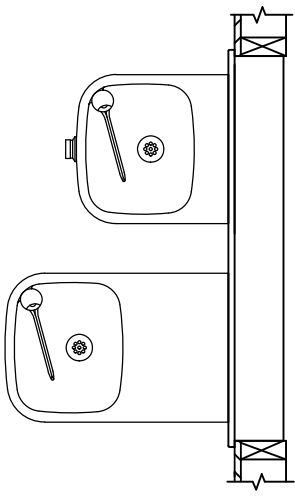
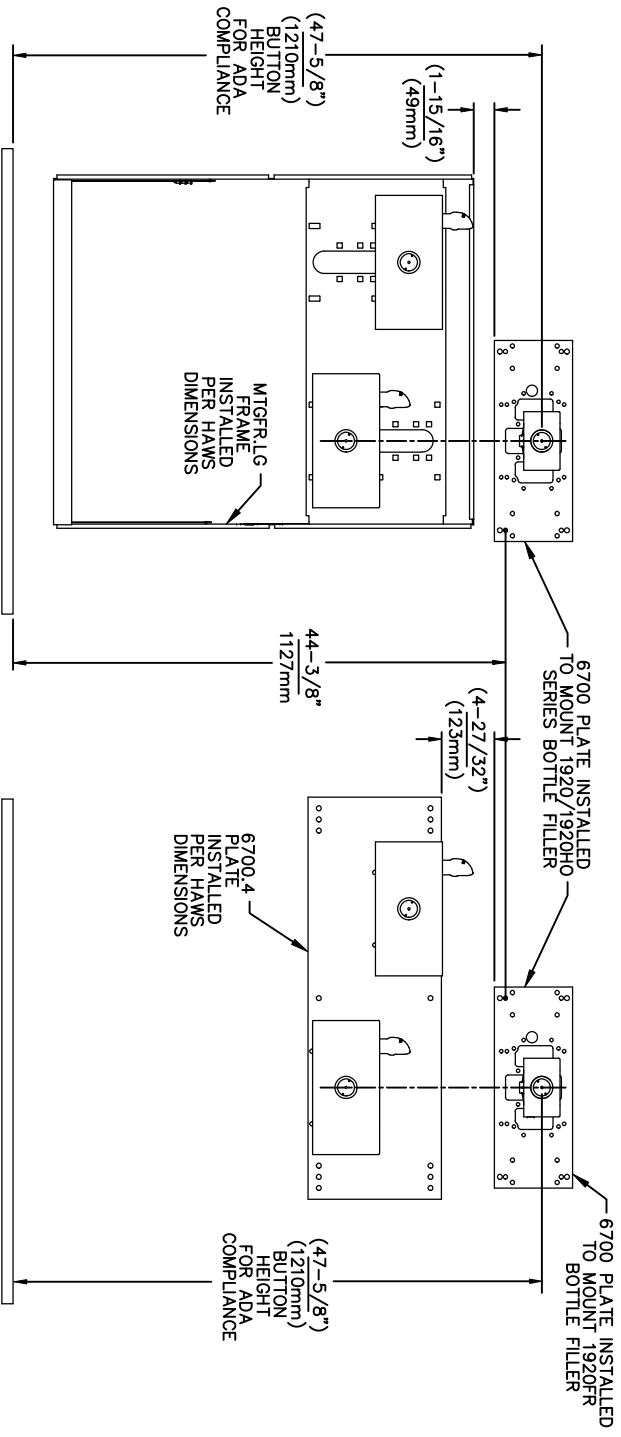
6700  
PART NUMBER  
0002080016  
REVISION  
25








USE THESE MOUNTING DIMENSIONS IF INSTALLING OVER HAWS FOUNTAIN  
MODEL: 1011, 1011HO, 1011HO2, 1011HPS, 1011HPSHO, 1011HPSHO2, 1011HPSMS, 1011HMS, 1011MSHO, 1011MSHO2, H1011.8, H1011.8HO, H1011.8HO2 & H1011.8HPSM AT 27" ADULT HEIGHT  
INSTALL THE 6700 ABOVE THE FOUNTAIN MOUNTING PLATE OR FRAME AT THE DIMENSION SHOWN FOR CORRECT BACKPANEL SPACING  
BACK PANELS FOR BOTTLE FILLERS (NOT SUPPLIED - OPTIONAL) ARE NOT SHOWN FOR CLARITY.

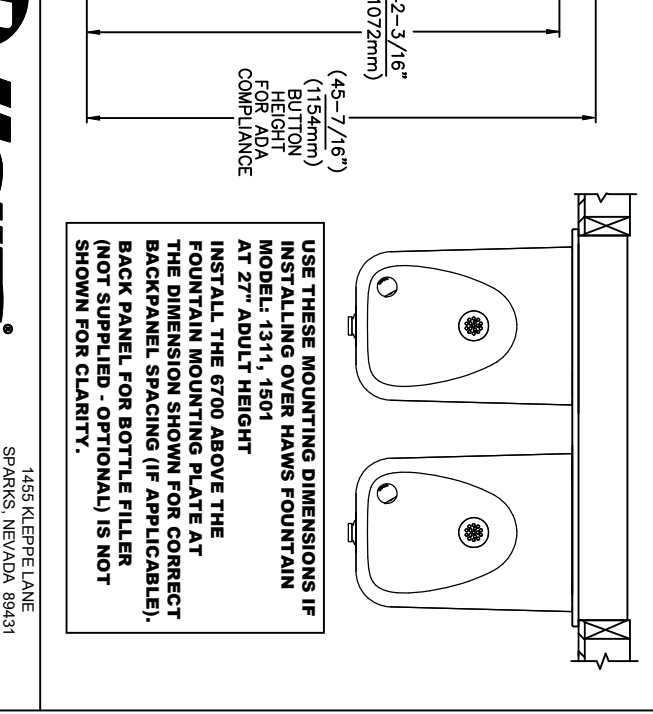
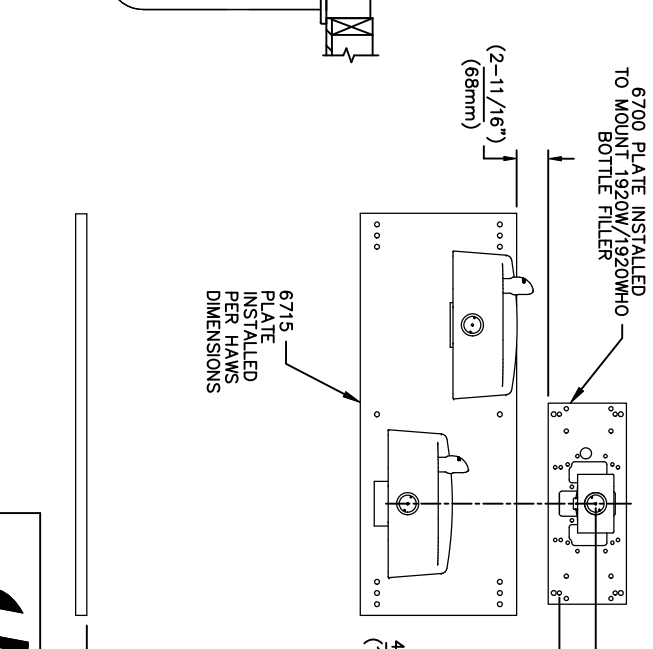
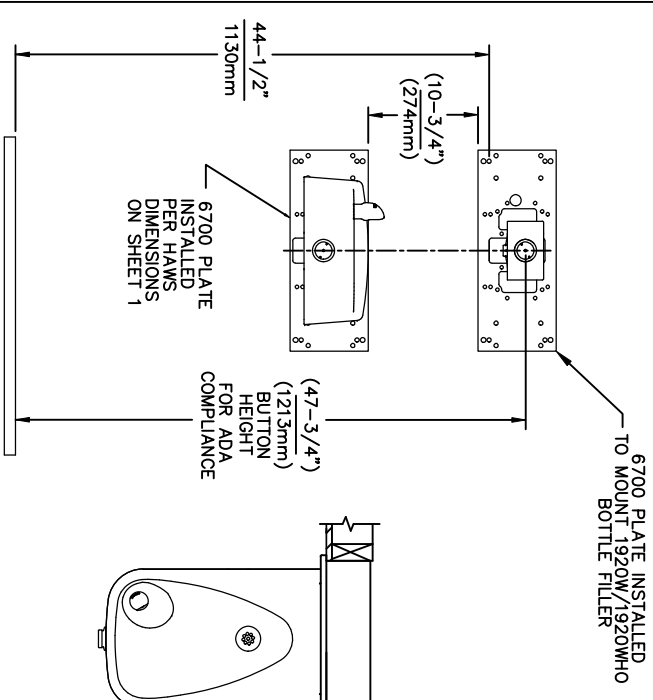


USE THESE MOUNTING DIMENSIONS IF INSTALLING OVER HAWS FOUNTAIN  
MODEL: 1119, 1119.14, 1119.14HO, 1119.14HO2, 1119FR, 1119FRB, 1119FRP, 1119HO, 1119HO2 & H1119.8 AT 27" ADULT HEIGHT  
INSTALL THE 6700 ABOVE THE FOUNTAIN MOUNTING PLATE OR FRAME AT THE DIMENSION SHOWN FOR CORRECT BACKPANEL SPACING  
BACK PANELS FOR BOTTLE FILLERS (NOT SUPPLIED - OPTIONAL) ARE NOT SHOWN FOR CLARITY.

- NOTES:
1. WHEN INSTALLING THIS UNIT, LOCAL, STATE OR FEDERAL CODES SHOULD BE ADHERED TO.
  2. BACK PANELS (OPTIONAL) NOT SHOWN FOR CLARITY.

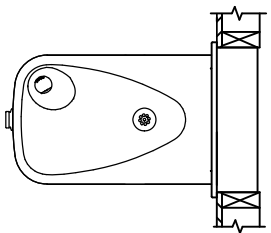
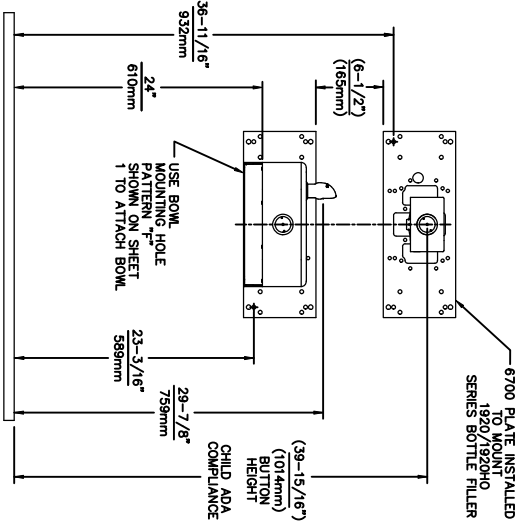
6700 MOUNTING PLATE  
FOR USE WITH BOTTLE FILLER  
(SEE SHEET 1 FOR USE WITH  
DRINKING FOUNTAINS)

		1456 KLEPPE LANE SPARKS, NEVADA 89431 (775) 359-4712 FAX (775) 359-7424 E-MAIL: HAWS@HAWS.CO.COM WEBSITE: WWW.HAWS.CO.COM	
ECN NO. REVISED PERBY:	MODEL(S)	6700	
5550 ECN 6131	DATE: CHKD:	6700	
FW	05/14/20 JG	6700	
APPROVED:	DATE:	SCALE: 1:13	DRAWING TYPE:
RH	11/20/24	INSTALLATION	SIZE: A
		SHEET 4 OF 6	REVISION: 25



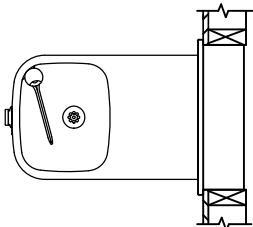
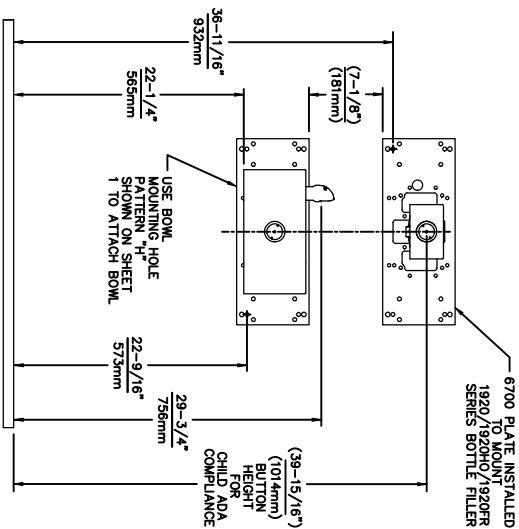
6700 MOUNTING PLATE  
FOR USE WITH BOTTLE FILLER  
(SEE SHEET 1 FOR USE WITH  
DRINKING FOUNTAINS)

©2024 Haws Corporation - All Rights Reserved. HAWS® and other trademarks used in these materials are the exclusive property of Haws Corporation.



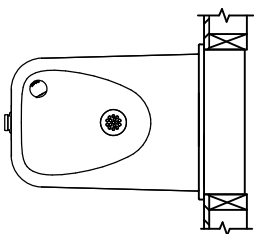
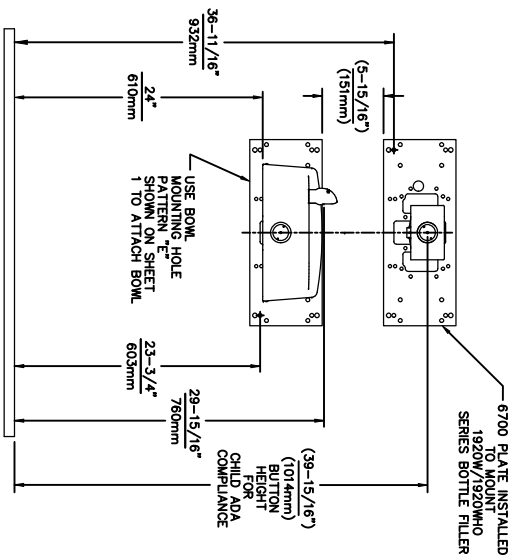
USE THESE DIMENSIONS WITH HAWS  
MODEL:  
1107L  
AT 24\" CHILD HEIGHT \*

6700 MOUNTING PLATE  
FOR USE WITH BOTTLE FILLER AT  
40\" MAX. AND  
DRINKING FOUNTAIN  
AT 24\" AND BUBBLER HEIGHT AT 30\"  
MAX. FOR CHILD ADA HEIGHT  
(SEE SHEETS 1 & 2 FOR USE WITH  
DRINKING FOUNTAIN AT 27\" ADULT  
HEIGHT DIMENSIONS)



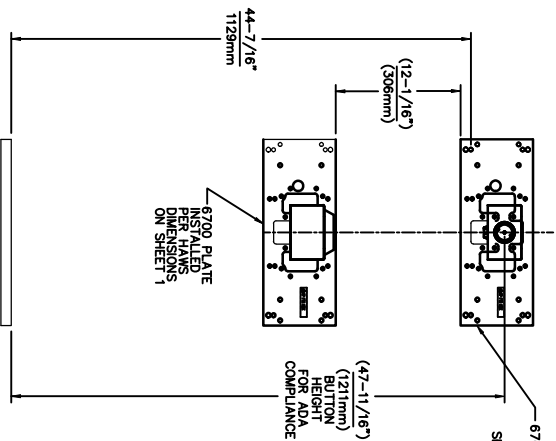
USE THESE DIMENSIONS WITH HAWS  
MODELS:  
1109, 1109.14, 1109FR, 1109FRB, 1109FRP  
AT 22-1/4\" HEIGHT TO ACHIEVE 30\" MAX.  
CHILD ADA BUBBLER HEIGHT \* NOTE:  
MUST USE PARALLEL APPROACH WITH  
THIS BOWL COMBINATION.

- NOTES:
1. WHEN INSTALLING THIS UNIT, LOCAL, STATE OR FEDERAL CODES SHOULD BE ADHERED TO.
  2. ONE PIECE BACK PANELS BP15C (FOR USE WITH MODELS 1107L, 1109 SERIES & BOTTLE FILLER) & BP15WC (FOR USE WITH MODEL 1311 & BOTTLE FILLER) ARE USED FOR CHILD HEIGHT APPLICATIONS AND ARE OPTIONAL (NOT SHOWN FOR CLARITY).



USE THESE DIMENSIONS WITH HAWS  
MODEL:  
1107L  
AT 24\" CHILD HEIGHT \*


6700 MOUNTING PLATE  
FOR USE WITH BOTTLE FILLER AT  
40\" MAX. AND  
DRINKING FOUNTAIN  
AT 24\" AND BUBBLER HEIGHT AT 30\"  
MAX. FOR CHILD ADA HEIGHT  
(SEE SHEETS 1 & 4 FOR USE WITH  
DRINKING FOUNTAIN AT 27\" ADULT  
HEIGHT DIMENSIONS)



USE THESE MOUNTING DIMENSIONS IF  
INSTALLING OVER HAWS WASTE DRIP  
TRAY. MODEL: 0468 (SHOWN), 1922  
(MODEL 1922 INCLUDES 1920 BOTTLE  
FILLER, 1922 BACK PANELS (NOT SHOWN),  
BP15, 1922 BACK PANELS (NOT SHOWN),  
AT 27\" ADULT HEIGHT

INSTALL THE 6700 ABOVE THE  
DRIP TRAY MOUNTING PLATE AT  
THE DIMENSION SHOWN FOR CORRECT  
BACK PANEL SPACING (IF APPLICABLE).  
(NOT SUPPLIED - OPTIONAL) IS NOT  
SHOWN FOR CLARITY.

6700 MOUNTING PLATE  
FOR USE WITH BOTTLE FILLER  
(SEE SHEET 1 FOR USE WITH  
DRINKING FOUNTAINS  
AND WASTE DRIP TRAY)



Since 1906

1455 KLEPPE LANE  
SPARKS, NEVADA 89431  
(775) 359-4712 FAX (775) 359-7424  
E-MAIL: HAWS@HAWS.CO.COM  
WEBSITE: WWW.HAWS.CO.COM

ECN NO. REVISED PERBY:	MODEL(S)
5893: 1 ECU 6131 FV	6700
DRAWN: DATE: 07/26/23 JG	
APPROVED: DATE: 11/20/24	
RH	
SCALE: 1:13	DRAWING TYPE: INSTALLATION
SHEET 6	OF 6