

FEATURES & BENEFITS

CONSTRUCTION

Rugged ADA accessible 14-gauge Type 304 Stainless Steel with a satin finish bowl, 14 gauge Type 304 Stainless Steel bottle filler that resists stains and corrosion, soft rounded corners, stainless steel satin finish back panels, vandal resistant bottom plate, and 1-1/4" integral trap.

BOTTLE FILLER

Vandal-resistant, 14-gauge Type 304 stainless steel bottle filler housing with push button operation and 1 gpm (3.78 L) laminar flow.

BUBBLER HEAD

Polished chrome-plated brass bubbler head with integral 11/16" dia. basin shank and stainless anti-rotation roll pin for vandal resistance strength. Shielded, angled stream opening provides a steady, sanitary source of drinking water at .45 gpm.

FOUNTAIN VALVES

The push-button activated valves have all stainless steel bodies, with chrome plated brass push button assemblies which allow for front access to water stream adjustment, water control cartridge, and water supply strainer replacement without having to go through the bottom plate. Operating pressure range of 30 to 90 psi (2.1 to 6.2 bar).

VANDAL RESISTANT

The bubbler head, push buttons, drain strainer and bottom plates are locked in place, discouraging unwanted vandal tampering.

INTEGRATED TRAP

Brass 1-1/4" NPT trap is internally mounted for easy installation and access.

OPTIONS

- Water Filter: Model 6480 filter kit with 3000 gallon carbon block filter, filter head, and mounting bracket.
- Back Panel: Model BP15C, one-piece panel for fountain/bottle filler combination when child-height ADA requirements are needed.
- Mounting Plate: Model 6700R, on-wall mounting plate for model 1920.
- Support Frame: Model 6800 In-wall floor mounted fixture support legs, welded steel 4-bolt floor flanges, and supplied with 'U' bolts and hardware.
- Remote Drinking Fountain Water Chiller: Model HCR8, 8 gph (30.3 L) remote water chiller provides instantaneous cooling to meet a continuous demand for chilled water.

For more information, visit www.hawsco.com or call (888) 640-4297.



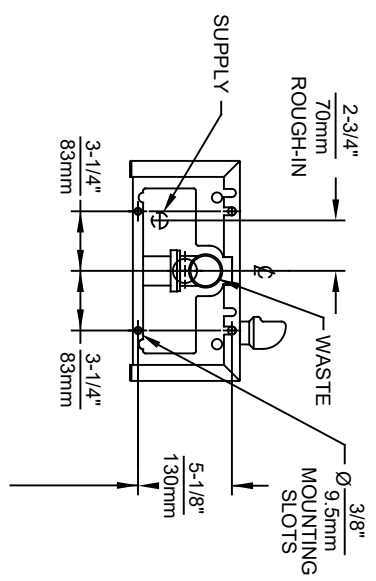
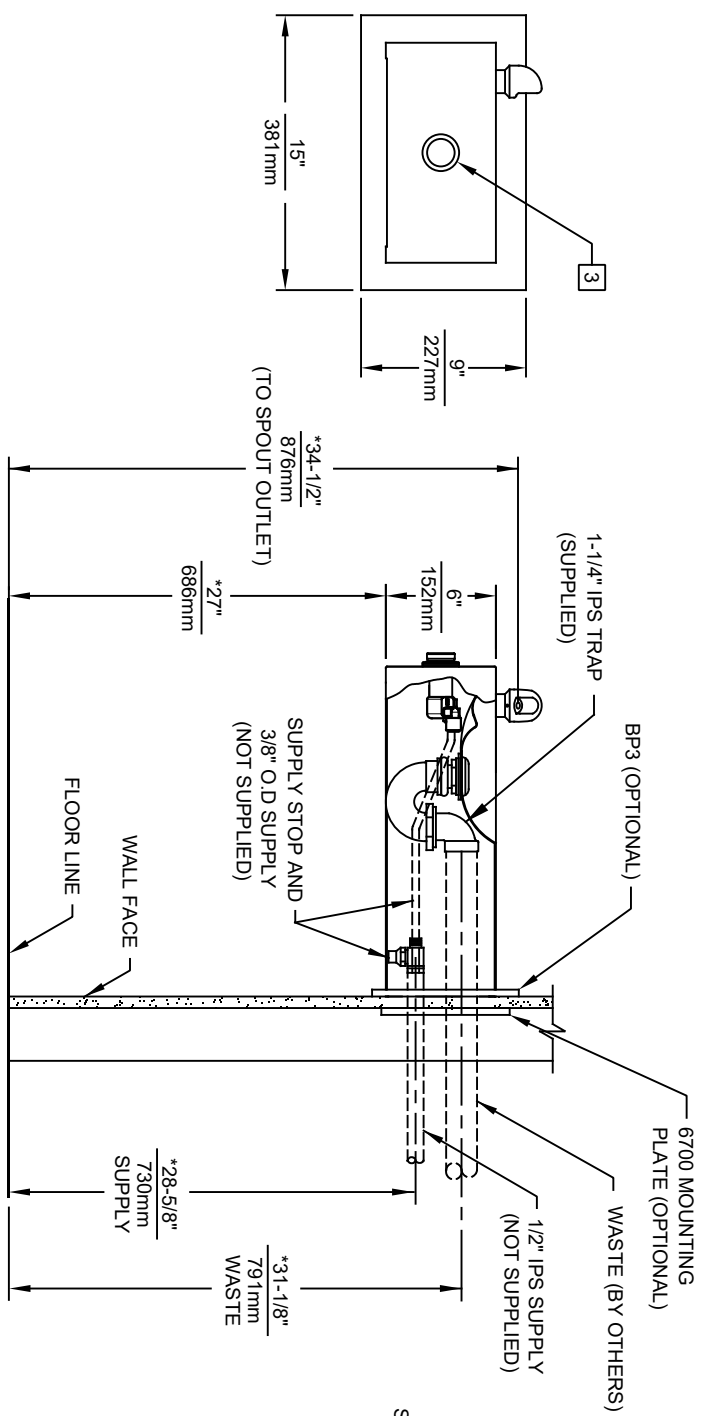
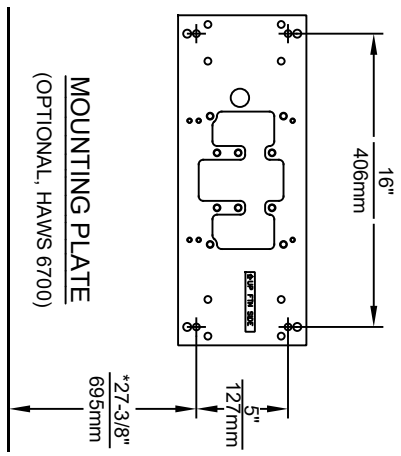
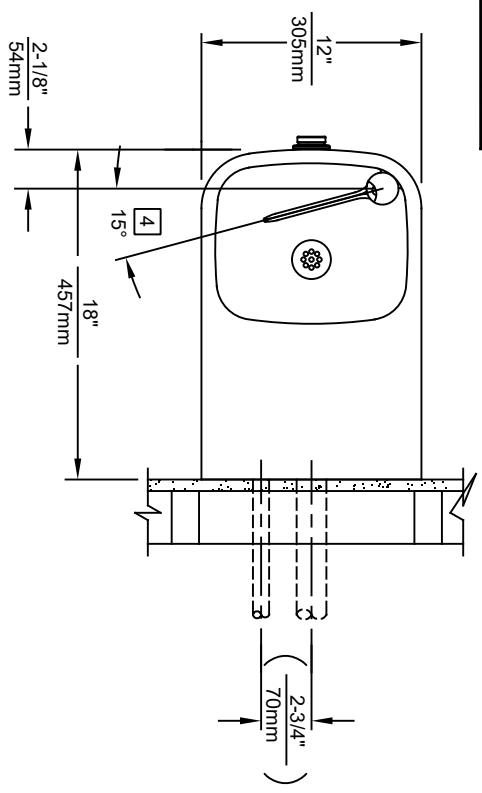
SPECIFICATIONS

Model 1109.14P wall-mounted vandal-resistant ADA drinking fountain and bottle filler shall include an 14-gauge Type 304 Stainless Steel satin finish basin, 14 gauge Type 304 Stainless Steel bottle filler bracket, 3/16" (.47 cm) thick steel mounting plates for fountain and bottle filler, 100% lead-free waterways, vandal-resistant push-button operated stainless steel valves with front accessible cartridge and flow adjustment, polished chrome-plated brass vandal-resistant bubbler head with integral laminar anti-squirt flow, 1 gpm (3.78 L) laminar flow bottle filler, polished chrome-plated brass vandal-resistant waste strainer, vandal-resistant bottom plates, and 1-1/4" NPT trap. Manufactured to be lead-free by all known definitions including NSF/ ANSI/CAN 61-Section 9, NSF/ANSI/ CAN 372, California Proposition 65, and the Federal Safe Drinking Water Act Product is compliant to California Health and Safety Code 116875 (AB 1953-2006), and 116876 (AB 100) "NSF/ANSI/CAN 61: Q ≤ 1". In extreme environments related to heat and cold, product(s) must be protected from damage/exposure due to these extreme conditions.

APPLICATIONS

Perfect for either public or private indoor/outdoor settings, Model 1109.14P is a great fit in areas where aesthetics are important to the overall appeal of the architecture. Suitable in areas where extra durability is needed. Beautiful satin finish helps to maintain the fountains overall appeal. Specifically, this type of wall mounted drinking fountain may be placed in settings such as: schools and other locations in and around office buildings where the temperature remains above freezing. Model meets all current Federal Regulations for the disabled including those in the Americans with Disabilities Act. Haws manufactures drinking fountains, faucets and electric water coolers to be lead-free by all known definitions including NSF/ANSI/CAN 61-Section 9, NSF/ANSI/CAN 372, California Proposition 65, and the Federal Safe Drinking Water Act. Product is compliant to California Health and Safety Code 116875 (AB 1953-2006), and 116876 (AB 100) "NSF/ANSI/CAN 61: Q ≤ 1".







MOUNTING DETAIL
BACK VIEW

NOTES:

1. HOLD ROUGH-IN DIMENSIONS $\pm 1/4"$ (6.4mm).
2. WHEN INSTALLING THIS UNIT, LOCAL, STATE OR FEDERAL CODES SHOULD BE ADHERED TO. FOR INSTALLATION HEIGHTS OTHER THAN SHOWN, DIMENSIONS MARKED (*) MUST BE ADJUSTED ACCORDINGLY.
3. REFER TO 5874 SERIES/VRK5874 OPERATION AND MAINTENANCE MANUAL FOR PUSH BUTTON AND VALVE INSTALLATION AND MAINTENANCE INSTRUCTIONS.
4. MAXIMUM ADJUSTABLE RANGE IS 15° FROM PARALLEL TO BACK OF WALL.



1456 KLEPPE LANE
SPARKS, NEVADA 89431
(775) 359-4712 FAX (775) 359-7424
E-MAIL: HAWS@HAWS.CO.COM
WEBSITE: WWW.HAWS.CO.COM

ECN NO. REVISED PERBY: FV
DRAWN: ECN 5741 FV
F. VASQUEZ 06/98 B.M.
APPROVED: DATE: 11/1/2021

MODEL(S)
11109.14

SCALE: NA
DRAWING TYPE: INSTALLATION
SIZE: A
SHEET: 1 OF 1

PART NUMBER
0002076625.D
REVISION: 17

1920 INDEX

INSTALLATION WITH:	TYPICAL USES	SEE SHEET...
1001/1011 BOWLS	HAWS SERIES 1001, H1001.8X, 1011, 1011.8X STYLE FOUNTAINS	3 OF 9
1109/1119 BOWLS		4 OF 9
1107/1117 BOWLS		5 OF 9
1311/1501 BOWLS		6 OF 9
1047		7 OF 9
6468		8 OF 9
CHILD HEIGHT	HAWS 1107P STD CONFIG CHILD HEIGHT, 1109P STD CONFIG CHILD HEIGHT, 1311P STD CONFIG CHILD HEIGHT	9 OF 9



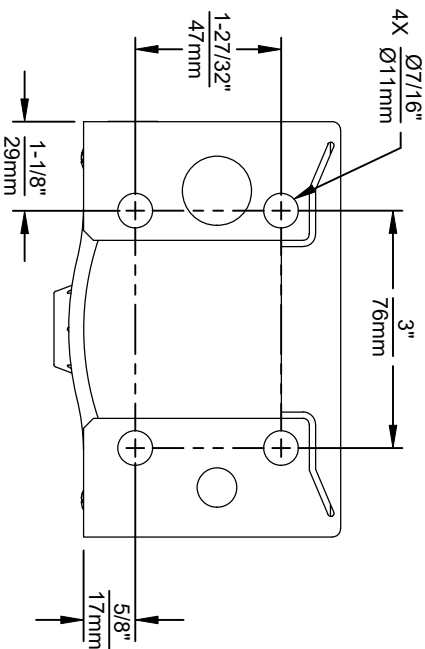
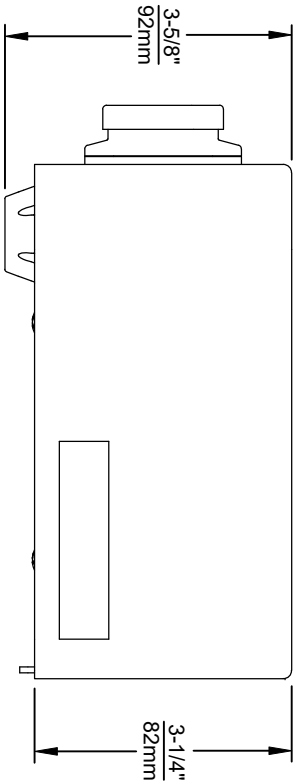
1455 KLEPPE LANE
SPARKS, NEVADA 89431
(775) 359-4712 FAX (775) 359-7424
E-MAIL: HAWS@HAWSCO.COM
WEBSITE: WWW.HAWSCO.COM

ECN NO. REVISED PER BY: J.G.
DRAWN BY: DATE: CHK'D: J.G.
APPROVED: DATE: 11/2/24

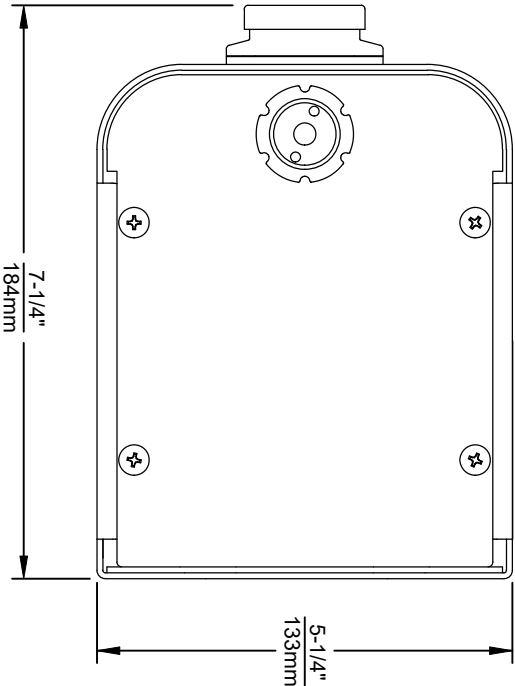
MODEL(S)
1920/1920HPS/1920W

PART NUMBER
0510000490.D
REVISION
13

SCALE: N/A DRAWING TYPE: INSTALLATION SIZE: A SHEET 1 OF 9

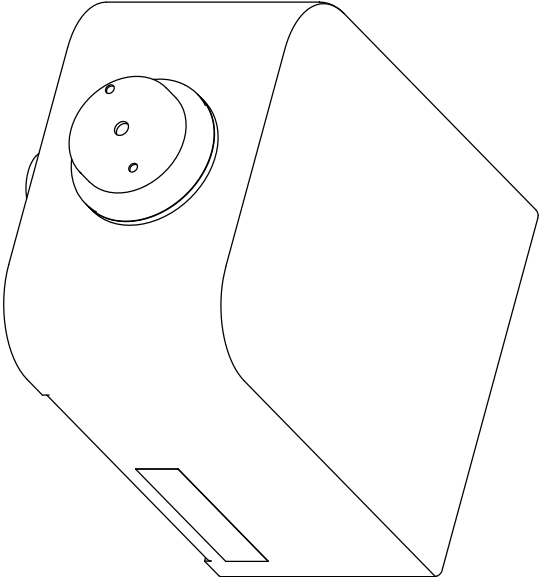



1920 SERIES MOUNTING HOLE LOCATIONS
(3/8"-16 UNC MOUNTING HARDWARE NOT SUPPLIED)



NOTES:

1. SEE SHEETS 2 THRU 7 FOR BOTTLE FILLER ADULT ADA HEIGHT APPLICATIONS AND SHEET 8 FOR CHILD ADA HEIGHT APPLICATIONS.
2. WHEN INSTALLING THIS UNIT, LOCAL, STATE OR FEDERAL CODES SHOULD BE ADHERED TO FOR INSTALLATION LOCATIONS, WASTE & SUPPLY REQUIREMENTS OTHER THAN SHOWN.

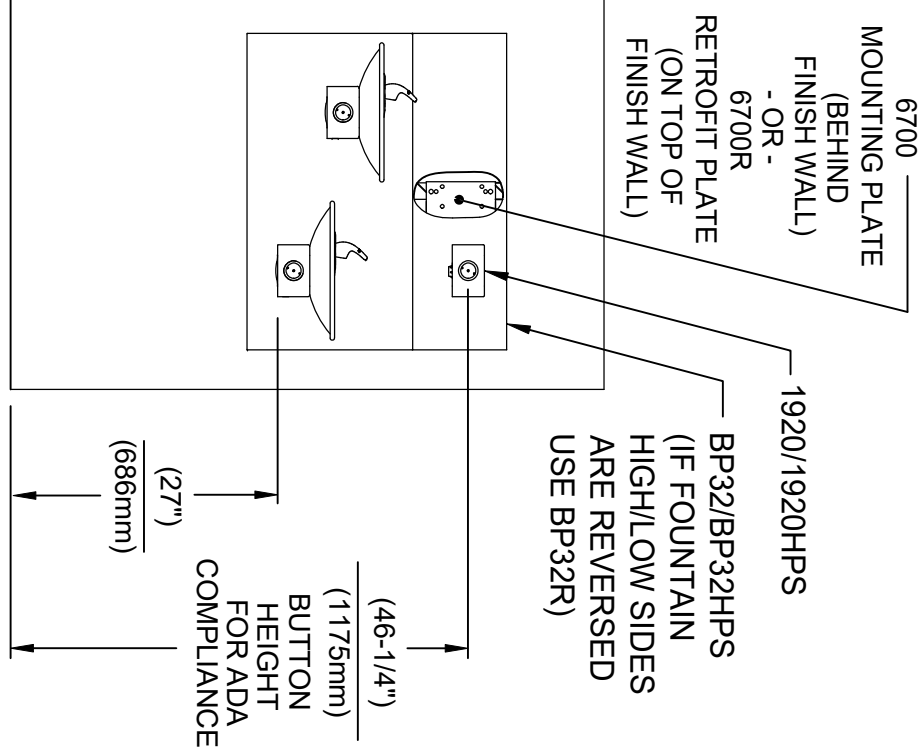




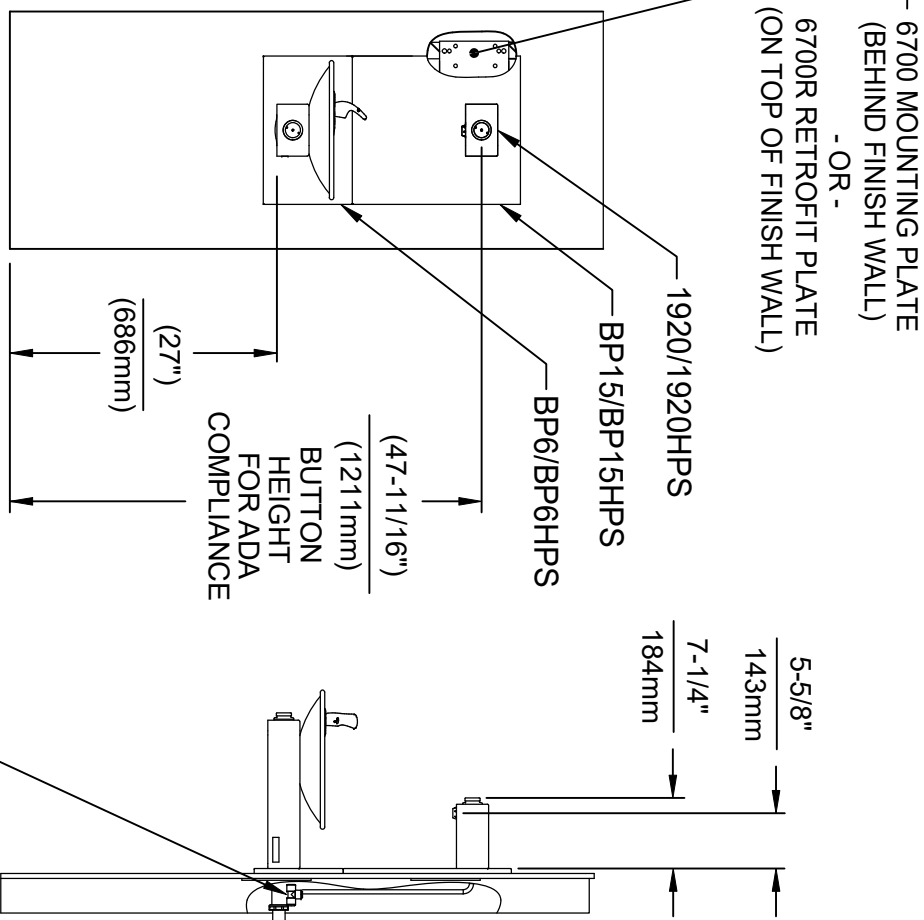
Haws
Since 1906

1455 KLEPPE LANE
SPARKS, NEVADA 89431
(775) 359-4712 FAX (775) 359-7424
E-MAIL: HAWS@HAWS.CO.COM
WEBSITE: WWW.HAWS.CO.COM

ECN NO.	REVISED PER BY:	MODEL(S)	PART NUMBER
5041	ECN 6131 J.G.	1920/1920HPS/1920W	0510000490.D
DRAWN	DATE	CHKD	REVISION
1855/6	J.G.		13
APPROVED:	DATE	SCALE: N/A	SHEET 2 OF 9
RH	11/2/24	DRAWING TYPE: INSTALLATION	



INSTALLATION ABOVE HAWS 1011 & H1011.8 SERIES

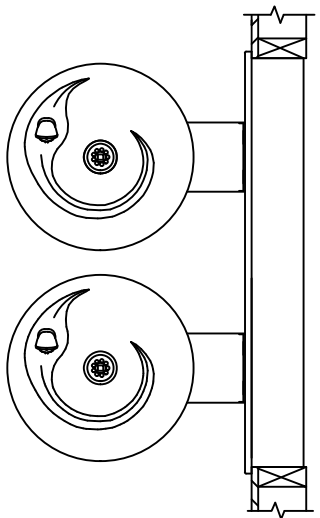


INSTALLATION ABOVE HAWS 1001 & H1001.8 SERIES


* IF YOUR FOUNTAIN IS THIS STYLE USE
THESE DIMENSIONS

1. SEE SEPARATE INSTALLATION DRAWINGS
FOR MOUNTING PLATES AND BACK PANELS
(SHOWN FOR REFERENCE - NOT SUPPLIED).

2. WHEN INSTALLING THIS UNIT, LOCAL,
STATE OR FEDERAL CODES SHOULD
BE ADHERED TO FOR INSTALLATION
LOCATIONS, WASTE & SUPPLY
REQUIREMENTS OTHER THAN SHOWN.



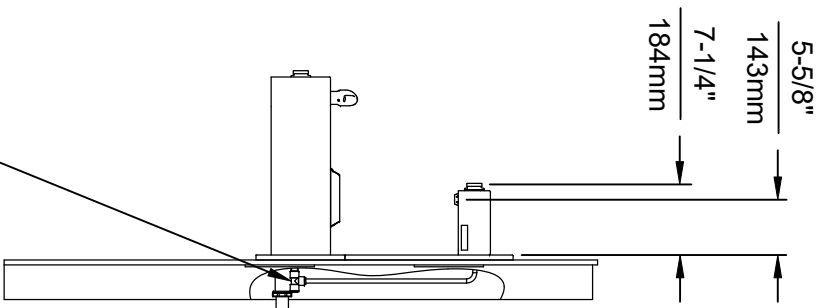
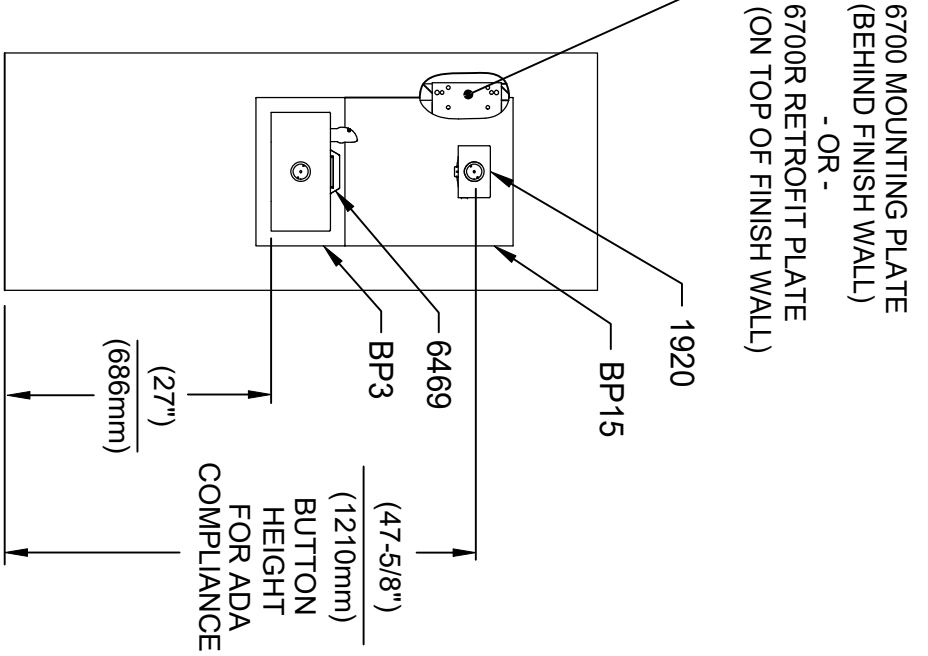
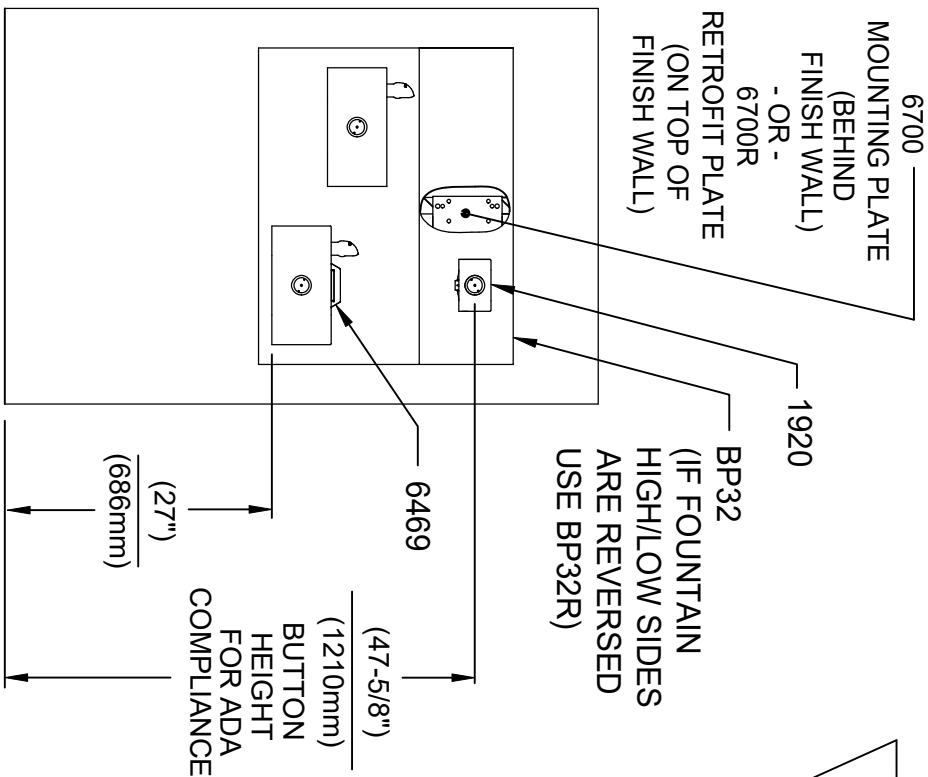
3/8" O.D. SUPPLY
TUBING AND 3/8" O.D.
PUSH-IN TEE SUPPLIED.
(CONNECT TO FOUNTAIN
SUPPLY LINE)



Haws®
Since 1906

ECON. NO. REVISED PER BY		MODEL(S)	
5081	ECON. 6131	J.G.	
DRAWN	DATE	CHKD	
M	08/05/17	J.G.	
APPROVED	DATE		
RH	11/29/24		
SCALE: N/A		DRAWING TYPE: INSTALLATION	SIZE: A
			SHEET 3 OF 9
		PART NUMBER	0510000490.D
		REVISION	13

1455 KLEPPE LANE
SPARKS, NEVADA 89431
(775) 359-4712 FAX (775) 359-7424
E-MAIL: HAWS@HAWS.CO.COM
WEBSITE: WWW.HAWS.CO.COM



INSTALLATION ABOVE HAWS 1119 & H1119.8 SERIES

**INSTALLATION ABOVE HAWS 1109 & H1109.8 SERIES
SEE SHEET 8 FOR INSTALLATION AT CHILD HEIGHT**


* IF YOUR FOUNTAIN IS THIS STYLE USE THESE DIMENSIONS

1. SEE SEPARATE INSTALLATION DRAWINGS FOR MOUNTING PLATES AND BACK PANELS (SHOWN FOR REFERENCE - NOT SUPPLIED).

2. WHEN INSTALLING THIS UNIT, LOCAL, STATE OR FEDERAL CODES SHOULD BE ADHERED TO FOR INSTALLATION LOCATIONS, WASTE & SUPPLY REQUIREMENTS OTHER THAN SHOWN.



3/8" O.D. SUPPLY TUBING AND 3/8" O.D. PUSH-IN TEE SUPPLIED. (CONNECT TO FOUNTAIN SUPPLY LINE)

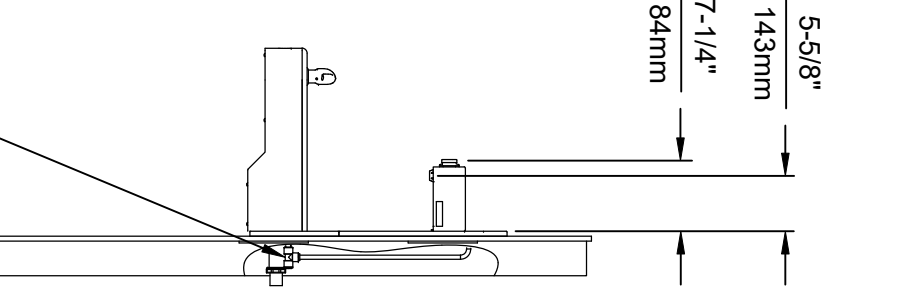
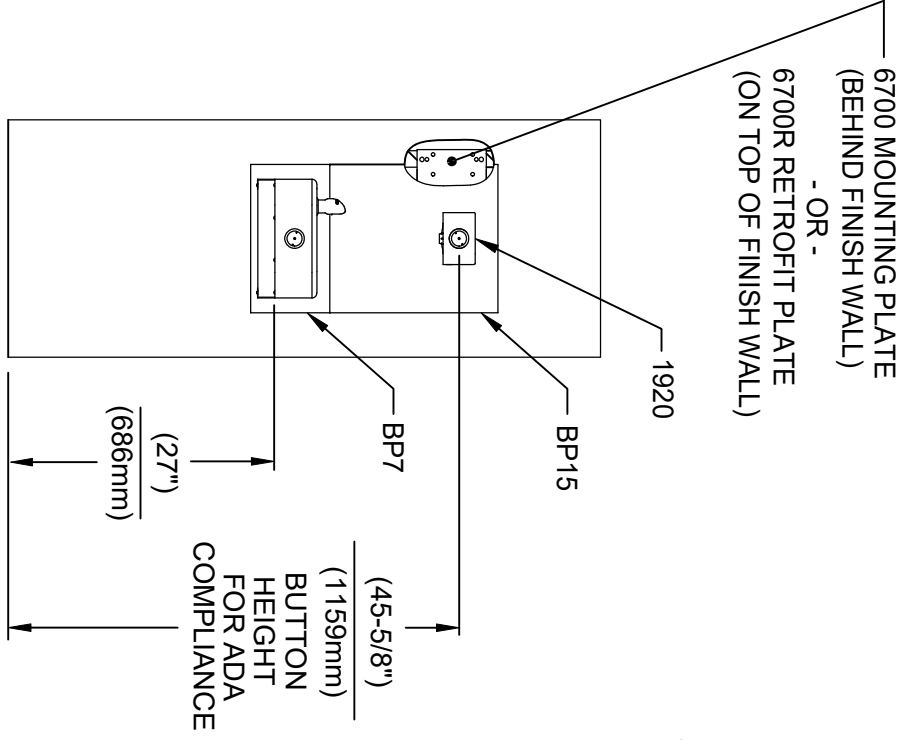
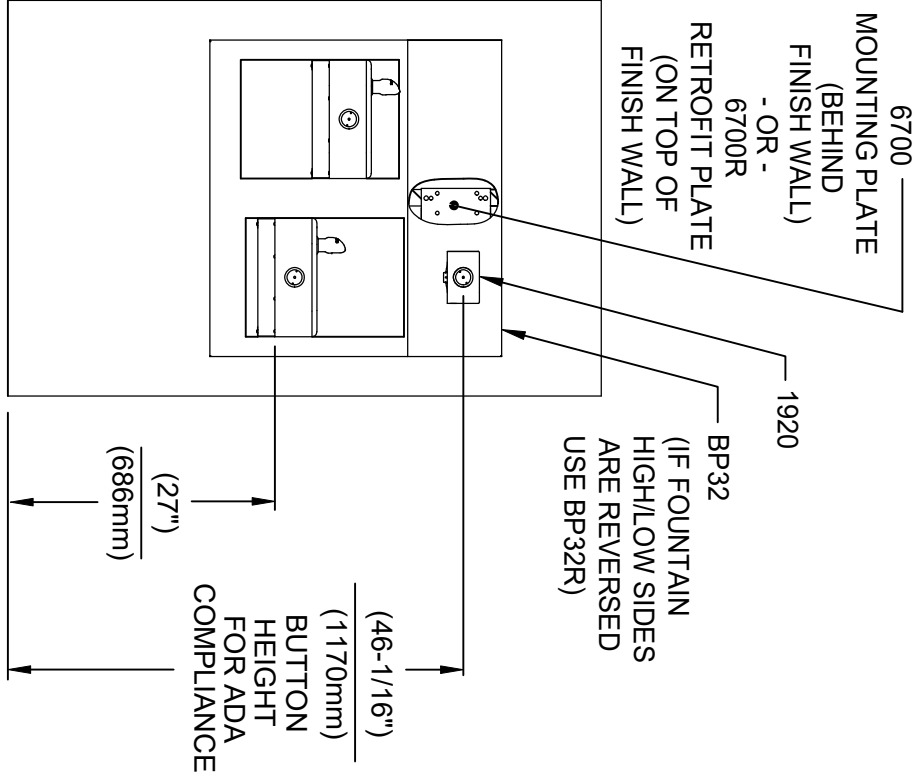
**Haws**
Since 1906

1455 KLEPPE LANE
SPARKS, NEVADA 89431
(775) 359-4712 FAX (775) 359-7424
E-MAIL: HAWS@HAWS.CO.COM
WEBSITE: WWW.HAWS.CO.COM

ECN NO.	REVISED PER BY	MODEL(S)
5081	ECN 6131 J.G.	
DRAWN BY	DATE	CHKD.
11/15/17	11/15/17	J.G.
APPROVED:	DATE	
RH	11/29/24	
SCALE:	N/A	DRAWING TYPE:
INSTALLATION	SIZE:	A
SHEET	4	OF 9

PART NUMBER
0510000490.D

REVISION
13



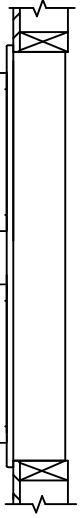
INSTALLATION ABOVE HAWS 1117L & H1117.8 SERIES

INSTALLATION ABOVE HAWS 1107L & H1107.8 SERIES
SEE SHEET 8 FOR INSTALLATION AT CHILD HEIGHT

* IF YOUR FOUNTAIN IS THIS STYLE USE THESE DIMENSIONS

1. SEE SEPARATE INSTALLATION DRAWINGS FOR MOUNTING PLATES AND BACK PANELS (SHOWN FOR REFERENCE - NOT SUPPLIED).

2. WHEN INSTALLING THIS UNIT, LOCAL, STATE OR FEDERAL CODES SHOULD BE ADHERED TO FOR INSTALLATION LOCATIONS, WASTE & SUPPLY REQUIREMENTS OTHER THAN SHOWN.



3/8" O.D. SUPPLY TUBING AND 3/8" O.D. PUSH-IN TEE SUPPLIED. (CONNECT TO FOUNTAIN SUPPLY LINE)



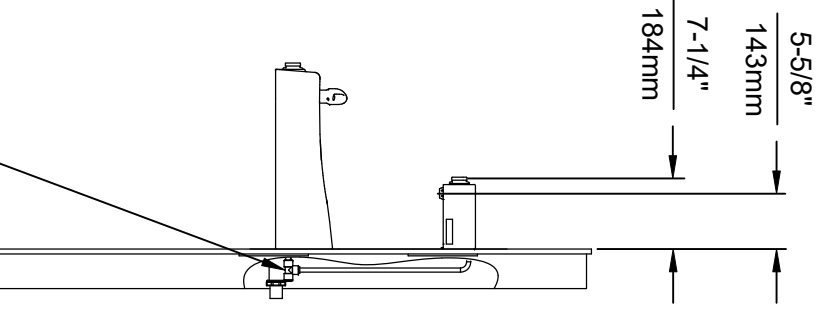
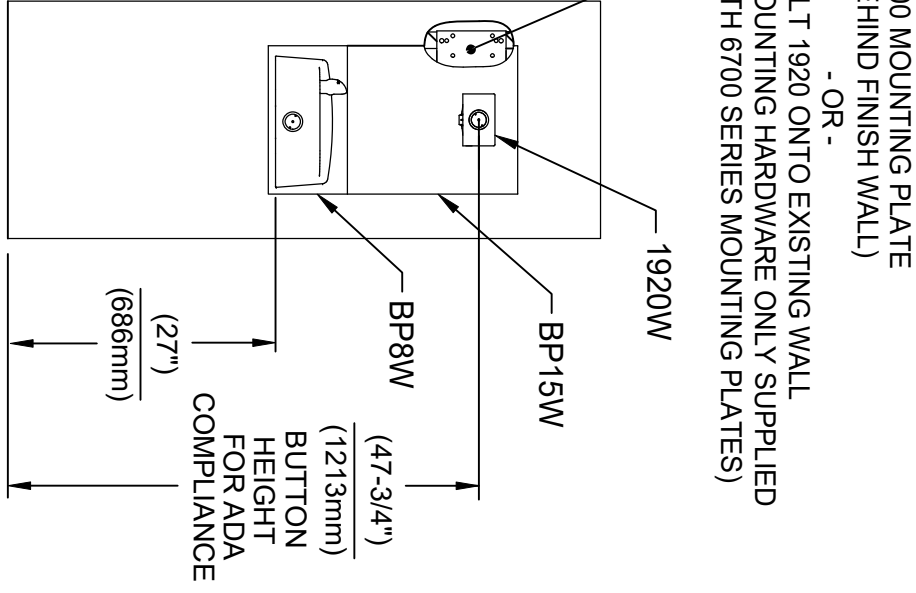
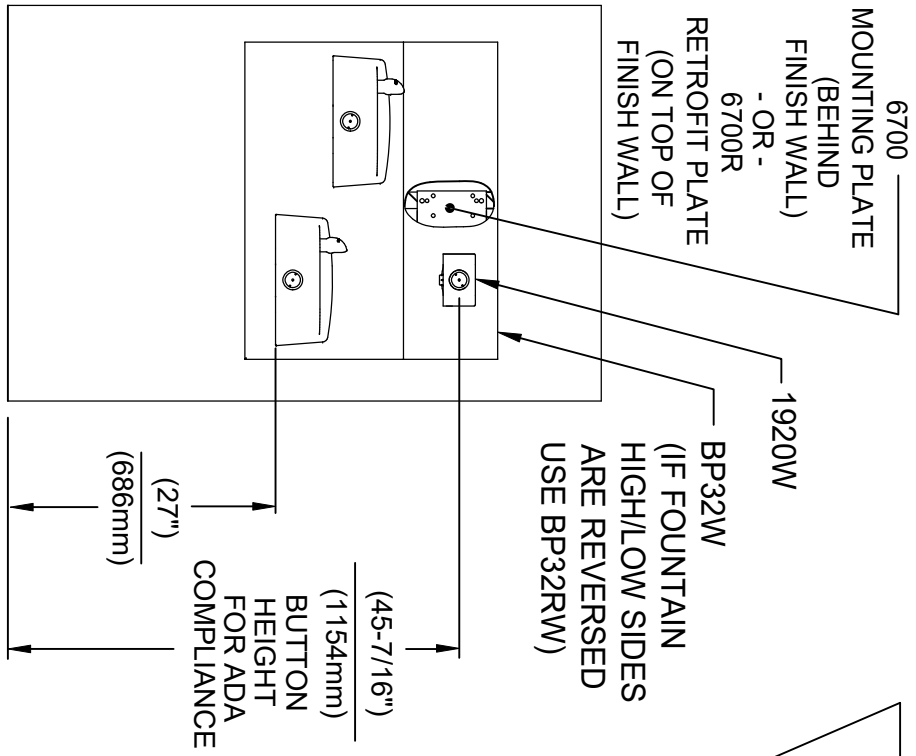
Haws
Since 1906

1455 KLEPPE LANE
SPARKS, NEVADA 89431
(775) 359-4712 FAX (775) 359-7424
E-MAIL: HAWS@HAWS.CO.COM
WEBSITE: WWW.HAWS.CO.COM

ECN NO. REVISED PER BY: J.G.
DATE: 01/01/17
DRAWN: J.G.
APPROVED: RH
SCALE: N/A
DRAWING TYPE: INSTALLATION
SIZE: A
SHEET 5 OF 9

MODEL(S)
1920/1920HPS/1920W

PART NUMBER
0510000490.D
REVISION
13

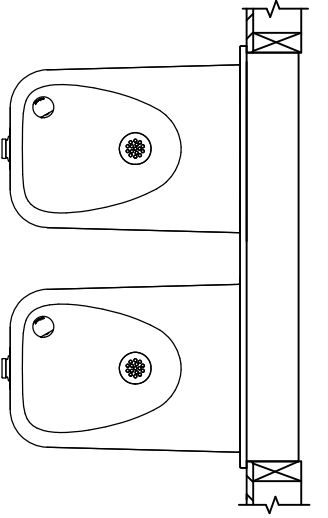



INSTALLATION ABOVE HAWS 1501

**INSTALLATION ABOVE HAWS 1311
SEE SHEET 8 FOR INSTALLATION AT CHILD HEIGHT**

* IF YOUR FOUNTAIN IS THIS STYLE USE
THESE DIMENSIONS

1. SEE SEPARATE INSTALLATION DRAWINGS
FOR MOUNTING PLATES AND BACK PANELS
(SHOWN FOR REFERENCE - NOT SUPPLIED).
2. WHEN INSTALLING THIS UNIT, LOCAL,
STATE OR FEDERAL CODES SHOULD
BE ADHERED TO FOR INSTALLATION
LOCATIONS, WASTE & SUPPLY
REQUIREMENTS OTHER THAN SHOWN.





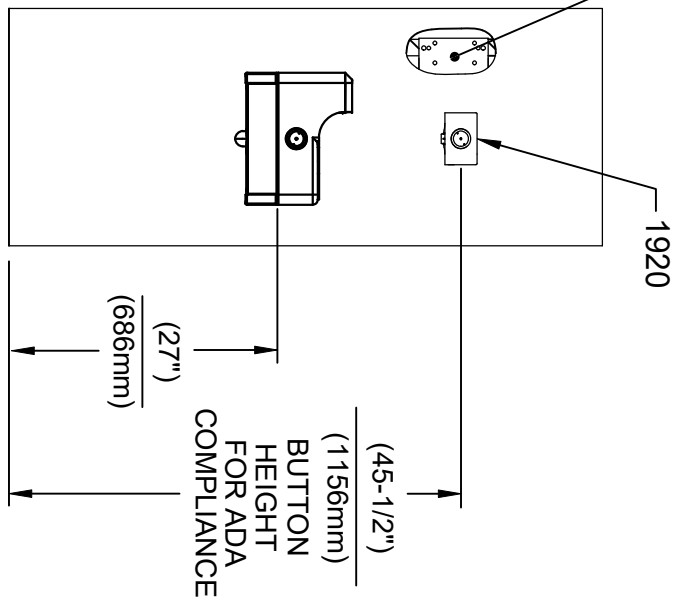
Haws
Since 1906

1455 KLEPPE LANE
SPARKS, NEVADA 89431
(775) 359-4712 FAX (775) 359-7424
E-MAIL: HAWS@HAWS.CO.COM
WEBSITE: WWW.HAWS.CO.COM

ECN NO.	REVISED PER BY	MODEL(S)	PART NUMBER
5081	ECN 6131 J.G.	1920/1920HPS/1920W	0510000490.D
DRAWN	DATE	CHKD	REVISION
W	02/25/17	J.G.	13

APPROVED: RH DATE 11/29/24 SCALE: N/A DRAWING TYPE: INSTALLATION SIZE: A SHEET 6 OF 9

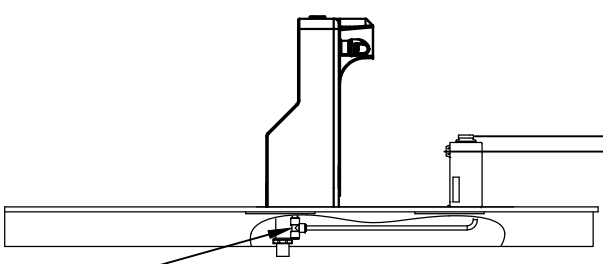
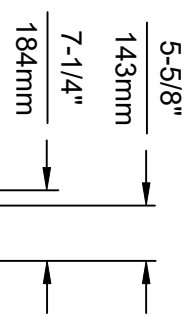
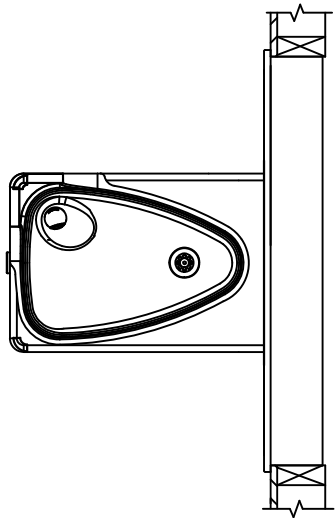
6700 MOUNTING PLATE
(BEHIND FINISH WALL)
- OR -
BOLT 1920 ONTO EXISTING WALL
(MOUNTING HARDWARE ONLY SUPPLIED
WITH 6700 SERIES MOUNTING PLATES)




INSTALLATION ABOVE HAWS 1047

* IF YOUR FOUNTAIN IS THIS STYLE USE
THESE DIMENSIONS

1. SEE SEPARATE INSTALLATION DRAWINGS
FOR MOUNTING PLATES AND BACK PANELS
(SHOWN FOR REFERENCE - NOT SUPPLIED).
2. WHEN INSTALLING THIS UNIT, LOCAL,
STATE OR FEDERAL CODES SHOULD
BE ADHERED TO FOR INSTALLATION
LOCATIONS, WASTE & SUPPLY
REQUIREMENTS OTHER THAN SHOWN.



3/8" O.D. SUPPLY
TUBING AND 3/8" O.D.
PUSH-IN TEE SUPPLIED.
(CONNECT TO FOUNTAIN
SUPPLY LINE)

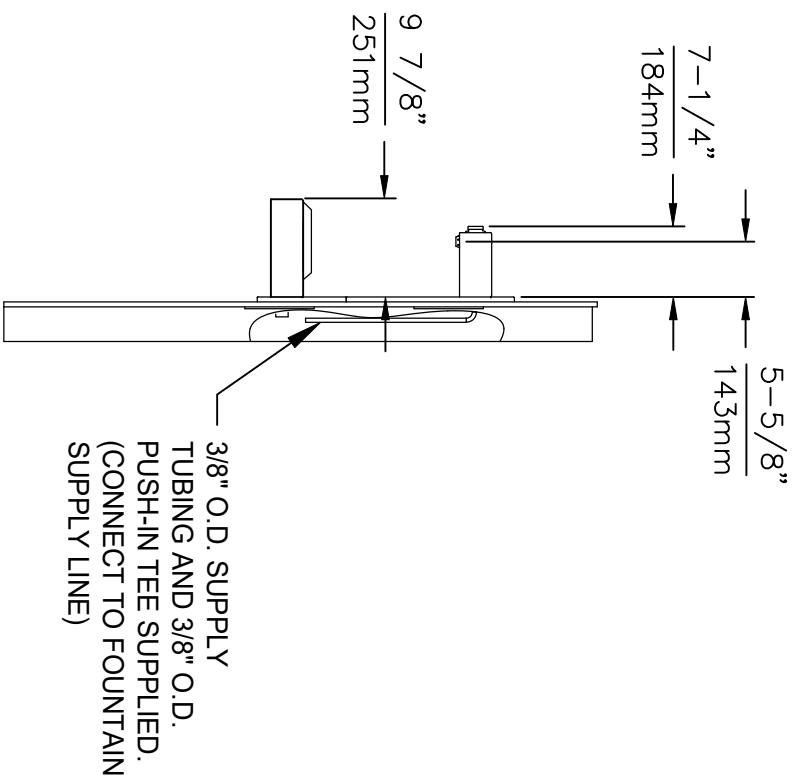


Haws
Since 1906

1455 KLEPE LANE
SPARKS, NEVADA 89431
(775) 359-4712 FAX (775) 359-7424
E-MAIL: HAWS@HAWS.CO.COM
WEBSITE: WWW.HAWS.CO.COM

ECN NO. 5220	REVISED PER BY: J.G.	MODEL(S) 1920/1920HPS/1920W	PART NUMBER 0510000490.D
DATE: 08/13/17	CHKD: J.G.	SCALE: N/A	REVISION 13
APPROVED: RH	DATE: 11/29/24	DRAWING TYPE: INSTALLATION	SHEET 7 OF 9

* MODELS 1920 (BOTTLE FILLER), BP15, BP6 (BACK PANELS) AND 6468 (WASTE DRIP TRAY) ARE ALL AVAILABLE TOGETHER AS MODEL 1922.



1. SEE SEPARATE INSTALLATION DRAWINGS FOR MOUNTING PLATE, WASTE DRIP TRAY AND BACK PANELS (SHOWN FOR REFERENCE - NOT SUPPLIED).
2. WHEN INSTALLING THIS UNIT, LOCAL, STATE OR FEDERAL CODES SHOULD BE ADHERED TO FOR INSTALLATION LOCATIONS, WASTE & SUPPLY REQUIREMENTS OTHER THAN SHOWN.

ECN NO. 5807
DRAWN: DP
APPROVED: RH

REVISED PER BY: JG
DATE: 10/27/20
CHKD: JG

DATE: 11/29/24

MODEL(S)

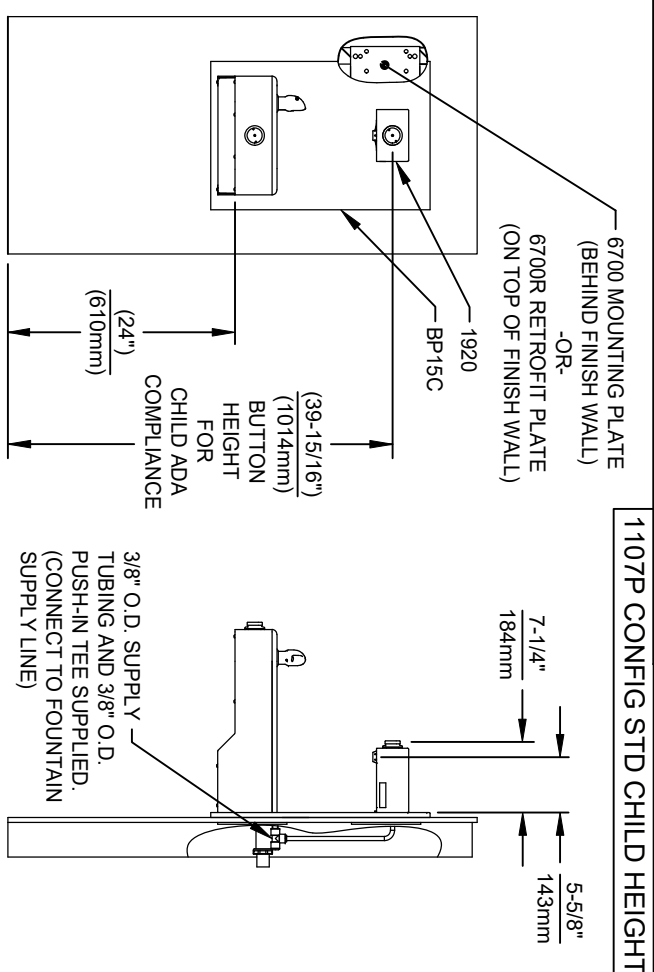
1920/1920HPS/1920W

SCALE: N/A
DRAWING TYPE:
INSTALLATION

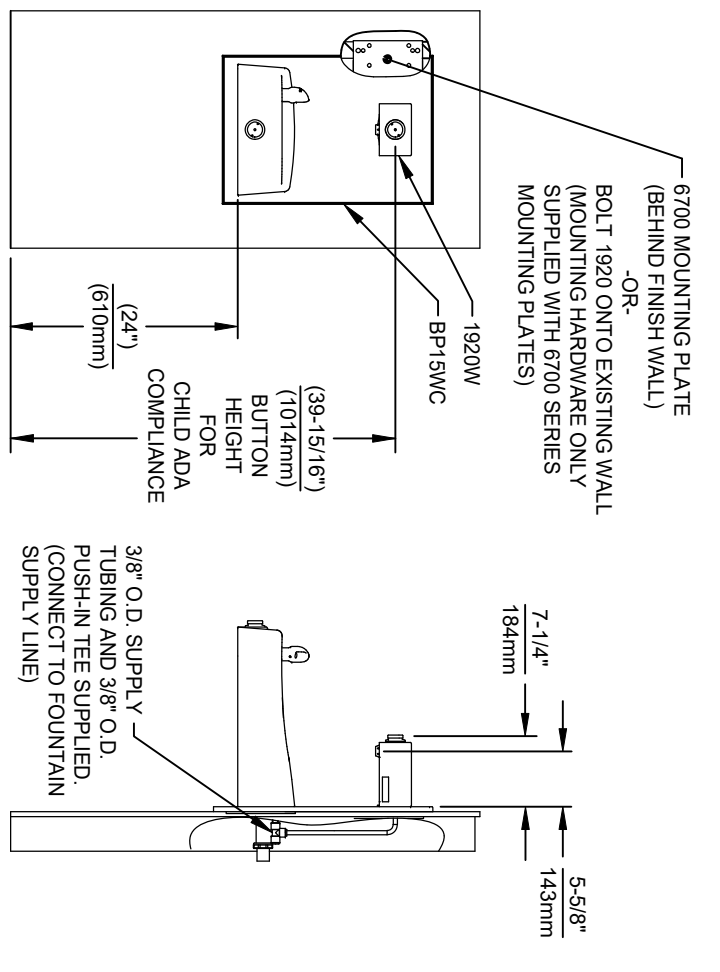
SIZE: A
SHEET 8 OF 9

REVISION
13

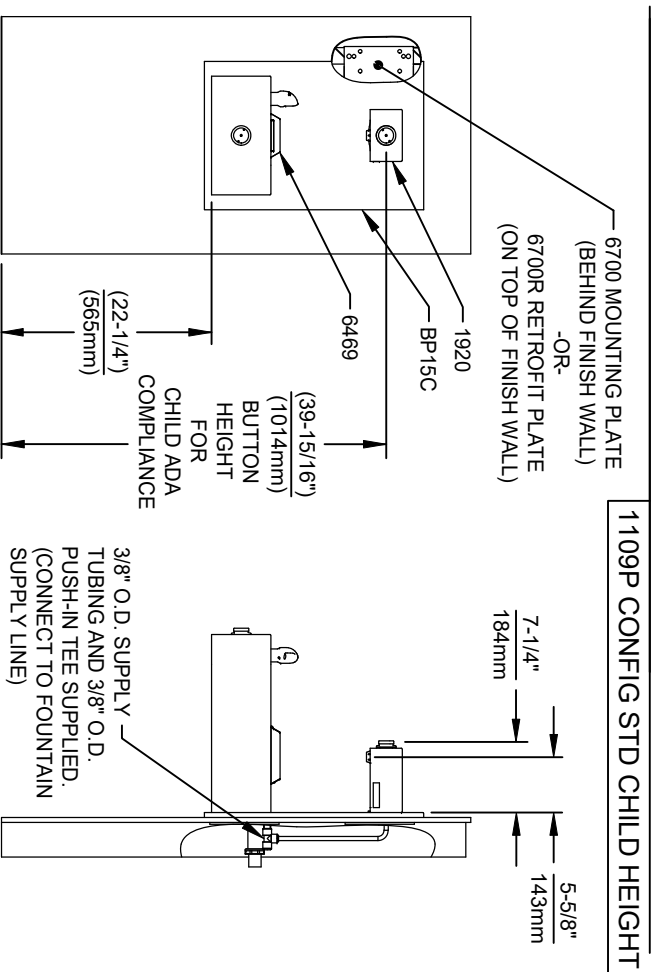
SPARKS, NEVADA 89431
(775) 375-4712 FAX (775) 359-7424
E-MAIL: HAVS@HAWSCO.COM
WEBSITE: WWW.HAWSCO.COM



INSTALLATION FOR 1107P CONFIG STD CHILD HEIGHT



INSTALLATION FOR 1311P CONFIG STD CHILD HEIGHT




1109P CONFIG STD CHILD HEIGHT



1309P CONFIG STD CHILD HEIGHT

- NOTES:
1. HEIGHT DIMENSIONS SHOWN ARE FOR CHILD ADA APPLICATIONS:
 - BOTTLE FILLER HEIGHT AT 40" MAX.
 - DRINKING FOUNTAIN BUBBLER HEIGHT AT 30" MAX.
 - (SEE SHEETS 3, 4 & 5 FOR ADULT ADA HEIGHT DIMENSIONS)
 2. SEE SEPARATE 6700 DRAWINGS FOR MOUNTING PLATES AND BACK PANELS (SHOWN FOR REFERENCE - SOLD SEPARATELY OR PART OF A BUNDLED PRODUCT).
 3. WHEN INSTALLING THIS UNIT, LOCAL, STATE OR FEDERAL CODES SHOULD BE ADHERED TO FOR INSTALLATION LOCATIONS, WASTE & SUPPLY REQUIREMENTS OTHER THAN SHOWN.



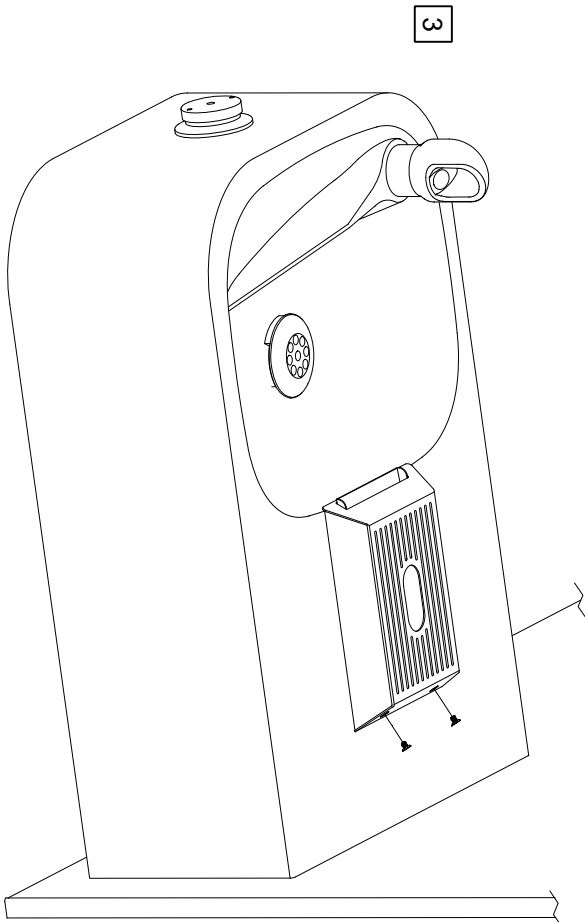
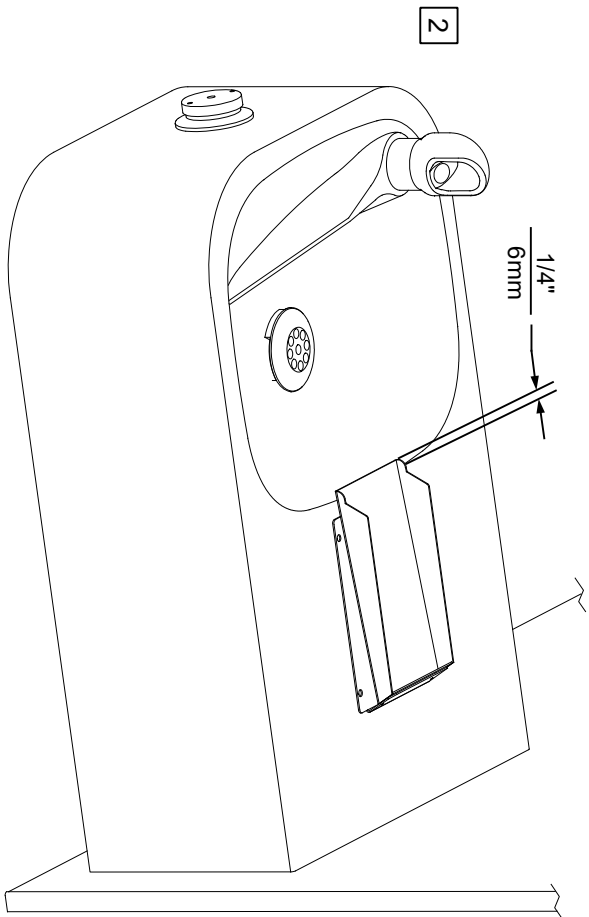
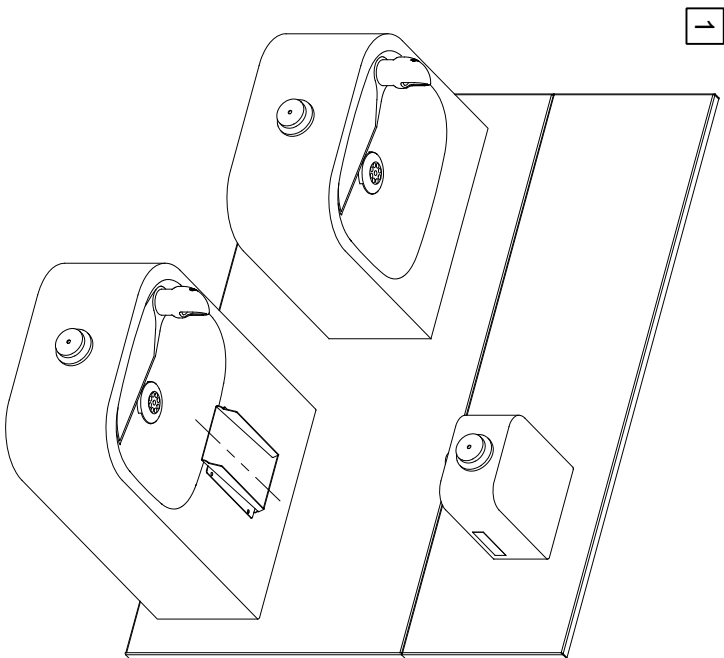
Haws®
Since 1906


1455 KLEPPE LANE
SPARKS, NEVADA 89431
(775) 359-4712 FAX (775) 359-7424
E-MAIL: HAWS@HAWS.CO.COM
WEBSITE: WWW.HAWS.CO.COM

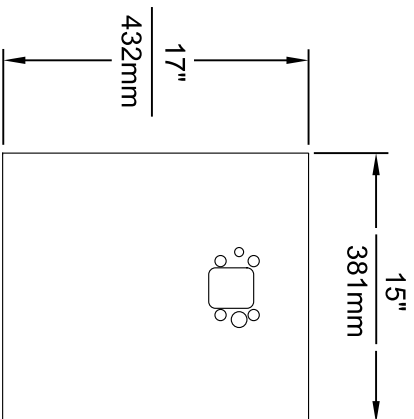
EQ'NO. REVISED PER BY:	MODEL(S)
6469 EQ'N 6131 J.G.	1920/1920HPS/1920W
DRAWN BY DATE:	
DATE:	
APPROVED:	
SCALE: N/A	DRAWING TYPE: INSTALLATION
SIZE: A	SHEET 9 OF 9
PART NUMBER	REVISION
0510000490.D	13

6469 STRAINER DRIP TRAY INSTALLATION

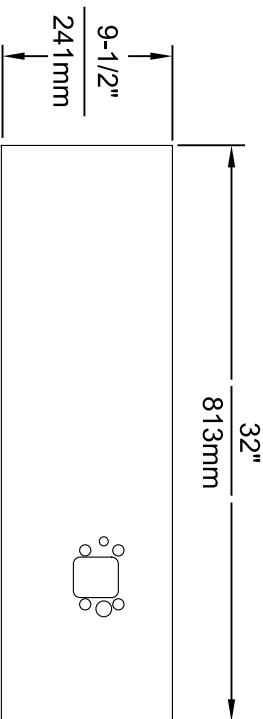
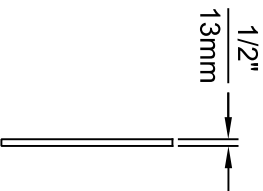
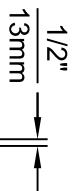
- 1 THE 6469 STRAINER DRIP TRAY ALLOWS THE INSTALLATION OF THE 1920 SERIES BOTTLE FILLER OVER HAWS 1109/1119 SERIES MODEL DRINKING FOUNTAINS. CENTER THE LOWER DRAIN PAN ALONG THE CENTERLINE OF THE FOUNTAIN.
- 2 EXTEND THE FRONT EDGE OF THE LOWER DRAIN PAN OVER THE EDGE OF THE FOUNTAIN BOWL BY APPROXIMATELY 1/4" (6mm). IT IS RECOMMENDED TO TEMPORARILY TAPE THE DRAIN PAN IN PLACE, INSTALL THE TOP COVER, AND ACTIVATE THE BOTTLE FILLER TO VERIFY THE WATER STREAM IS ALIGNED TO THE INLET HOLE. VERIFY THE LIP OF THE TOP COVER HANGS OVER THE EDGE OF THE FOUNTAIN BOWL.
- 3 MARK THE DRAIN PAN HOLE LOCATIONS ON THE FOUNTAIN. THE DRAIN PAN CAN NOW BE PERMANENTLY INSTALLED USING AN APPROPRIATE FASTENING METHOD (FASTENERS NOT SUPPLIED). FASTENING OPTIONS INCLUDE THRU BOLTS, RIVETS, TACK WELDS, AND DOUBLE-SIDED FOAM TAPE. INSTALL THE TOP COVER AND SECURE TO THE DRAIN PAN WITH THE SUPPLIED 4-40 FLAT HEAD SCREWS (QTY. 2).



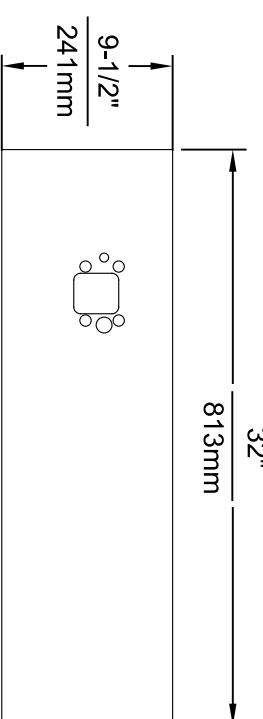
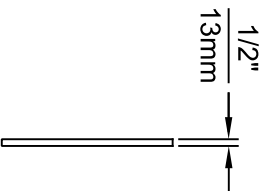
 Haws®		MODEL(S)		6469	
		PART NUMBER		0510000657.D	
1455 KLEPPE LANE SPARKS, NEVADA, 89431 (775) 359-4712 FAX (775) 359-7424 E-MAIL: HAWS@HAWS.CO.COM WEBSITE: WWW.HAWS.CO.COM		ECN NO. 5150 ECN 5799 DATE: 01/10/17 CHK'D: JS APPROVED: FV		REVISION 2	
SCALE: 1:4 DRAWING TYPE: INSTALLATION SIZE: A SHEET: 1 OF 1					



MODEL BP15 / BP15HPS / BP15W



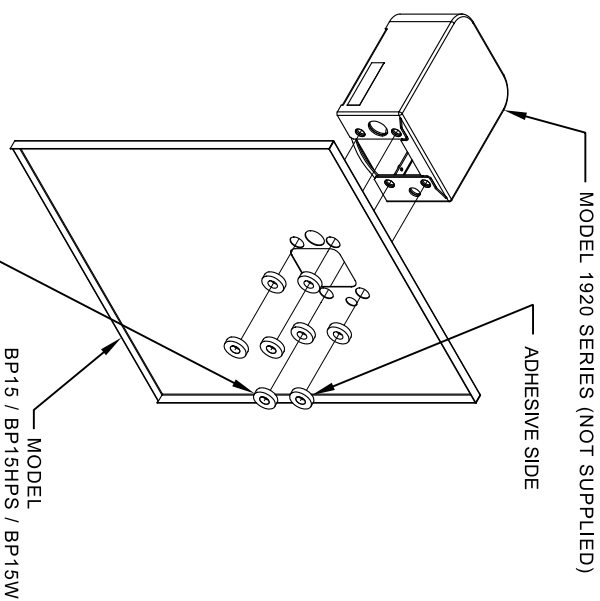
MODEL BP32 / BP32HPS / BP32W



MODEL BP32R / BP32RW

NOTES:

1. WHEN INSTALLING THIS UNIT, LOCAL, STATE OR FEDERAL CODES SHOULD BE ADHERED TO.
2. BOTTLE FILLER SHOWN FOR REFERENCE ONLY (NOT SUPPLIED).




8 SPACERS (2 PER MOUNTING BOLT IF THE MOUNTING PLATE (MODEL 6700 - NOT SUPPLIED) IS INSTALLED BEHIND THE FINISHED WALL. USE 1 SPACER PER BOLT FOR RETROFITS WHERE THE MOUNTING PLATE (MODEL 6700R - NOT SUPPLIED) IS INSTALLED IN FRONT OF THE FINISHED WALL)

INSTALLATION OVER SINGLE FOUNTAIN

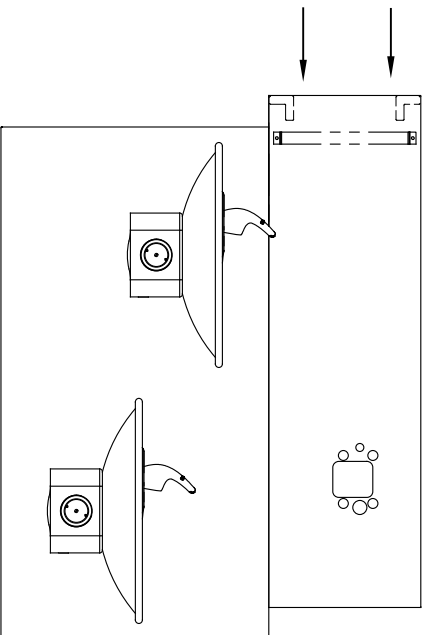
SHOWN FROM REAR

(SEE SHEET 3 OF 3 FOR INSTALLATION OF SPACERS
ON COMBINATION BOTTLE FILLER AND FOUNTAIN
BACK PANELS FOR CHILD HEIGHT APPLICATIONS -
MODELS BP15C & BP15WC)

 Haws® Since 1906										1455 KLEPPE LANE SPARKS, NEVADA 89431 (775) 359-4712 FAX (775) 359-1424 E-MAIL: HAWS@HAWSOCO.COM WEBSITE: WWW.HAWSOCO.COM														
ECON. NO. REVISED PERBY: FV										MODEL(S)														
5061					DRAWN:					ECON. 5972					DATE: 06/27/16					CHKD: JC				
APPROVED: FV					DATE: 04/19/24					SCALE: 1:1					DRAWING TYPE: INSTALLATION					PART NUMBER				
0510000493										FOR BP15 SERIES & BP32 SERIES, BOTTLE FILLER					REVISION					5				
0510000493					FOR BP15 SERIES & BP32 SERIES, BOTTLE FILLER					REVISION					5									
0510000493					FOR BP15 SERIES & BP32 SERIES, BOTTLE FILLER					REVISION					5									
0510000493					FOR BP15 SERIES & BP32 SERIES, BOTTLE FILLER					REVISION					5									
0510000493					FOR BP15 SERIES & BP32 SERIES, BOTTLE FILLER					REVISION					5									
0510000493					FOR BP15 SERIES & BP32 SERIES, BOTTLE FILLER					REVISION					5									
0510000493					FOR BP15 SERIES & BP32 SERIES, BOTTLE FILLER					REVISION					5									
0510000493					FOR BP15 SERIES & BP32 SERIES, BOTTLE FILLER					REVISION					5									
0510000493					FOR BP15 SERIES & BP32 SERIES, BOTTLE FILLER					REVISION					5									
0510000493					FOR BP15 SERIES & BP32 SERIES, BOTTLE FILLER					REVISION					5									
0510000493					FOR BP15 SERIES & BP32 SERIES, BOTTLE FILLER					REVISION					5									
0510000493					FOR BP15 SERIES & BP32 SERIES, BOTTLE FILLER					REVISION					5									
0510000493					FOR BP15 SERIES & BP32 SERIES, BOTTLE FILLER					REVISION					5									
0510000493					FOR BP15 SERIES & BP32 SERIES, BOTTLE FILLER					REVISION					5									
0510000493					FOR BP15 SERIES & BP32 SERIES, BOTTLE FILLER					REVISION					5									
0510000493					FOR BP15 SERIES & BP32 SERIES, BOTTLE FILLER					REVISION					5									
0510000493					FOR BP15 SERIES & BP32 SERIES, BOTTLE FILLER					REVISION					5									
0510000493					FOR BP15 SERIES & BP32 SERIES, BOTTLE FILLER					REVISION					5									
0510000493					FOR BP15 SERIES & BP32 SERIES, BOTTLE FILLER					REVISION					5									
0510000493					FOR BP15 SERIES & BP32 SERIES, BOTTLE FILLER					REVISION					5									
0510000493					FOR BP15 SERIES & BP32 SERIES, BOTTLE FILLER					REVISION					5									
0510000493					FOR BP15 SERIES & BP32 SERIES, BOTTLE FILLER					REVISION					5									
0510000493					FOR BP15 SERIES & BP32 SERIES, BOTTLE FILLER					REVISION					5									
0510000493					FOR BP15 SERIES & BP32 SERIES, BOTTLE FILLER					REVISION					5									
0510000493					FOR BP15 SERIES & BP32 SERIES, BOTTLE FILLER					REVISION					5									
0510000493					FOR BP15 SERIES & BP32 SERIES, BOTTLE FILLER					REVISION					5									
0510000493					FOR BP15 SERIES & BP32 SERIES, BOTTLE FILLER					REVISION					5									
0510000493					FOR BP15 SERIES & BP32 SERIES, BOTTLE FILLER					REVISION					5									
0510000493					FOR BP15 SERIES & BP32 SERIES, BOTTLE FILLER					REVISION					5									
0510000493					FOR BP15 SERIES & BP32 SERIES, BOTTLE FILLER					REVISION					5									
0510000493					FOR BP15 SERIES & BP32 SERIES, BOTTLE FILLER					REVISION					5									
0510000493					FOR BP15 SERIES & BP32 SERIES, BOTTLE FILLER					REVISION					5									
0510000493					FOR BP15 SERIES & BP32 SERIES, BOTTLE FILLER					REVISION					5									
0510000493					FOR BP15 SERIES & BP32 SERIES, BOTTLE FILLER					REVISION					5									
0510000493					FOR BP15 SERIES & BP32 SERIES, BOTTLE FILLER					REVISION					5									
0510000493					FOR BP15 SERIES & BP32 SERIES, BOTTLE FILLER					REVISION					5									
0510000493					FOR BP15 SERIES & BP32 SERIES, BOTTLE FILLER					REVISION					5									
0510000493					FOR BP15 SERIES & BP32 SERIES, BOTTLE FILLER					REVISION					5									
0510000493					FOR BP15 SERIES & BP32 SERIES, BOTTLE FILLER					REVISION					5									
0510000493					FOR BP15 SERIES & BP32 SERIES, BOTTLE FILLER					REVISION					5									
0510000493					FOR BP15 SERIES & BP32 SERIES, BOTTLE FILLER					REVISION					5									
0510000493					FOR BP15 SERIES & BP32 SERIES, BOTTLE FILLER					REVISION					5									
0510000493					FOR BP15 SERIES & BP32 SERIES, BOTTLE FILLER					REVISION					5									
0510000493					FOR BP15 SERIES & BP32 SERIES, BOTTLE FILLER					REVISION					5									
0510000493					FOR BP15 SERIES & BP32 SERIES, BOTTLE FILLER					REVISION					5									
0510000493					FOR BP15 SERIES & BP32 SERIES, BOTTLE FILLER					REVISION					5									
0510000493					FOR BP15 SERIES & BP32 SERIES, BOTTLE FILLER					REVISION					5									
0510000493					FOR BP15 SERIES & BP32 SERIES, BOTTLE FILLER					REVISION					5									
0510000493					FOR BP15 SERIES & BP32 SERIES, BOTTLE FILLER					REVISION					5									
0510000493					FOR BP15 SERIES & BP32 SERIES, BOTTLE FILLER					REVISION					5									
0510000493					FOR BP15 SERIES & BP32 SERIES, BOTTLE FILLER					REVISION					5									
0510000493					FOR BP15 SERIES & BP32 SERIES, BOTTLE FILLER					REVISION					5									
0510000493					FOR BP15 SERIES & BP32 SERIES, BOTTLE FILLER					REVISION					5									
0510000493					FOR BP15 SERIES																			

Technical drawing of a wall-mounted speaker. The drawing shows two side views of the speaker. The top view shows the speaker's profile with a mounting bracket. The bottom view shows the speaker's front face with a circular grille. Dimensions are indicated: a vertical dimension of 12" (305mm) and a horizontal dimension of 13mm. Arrows point to the mounting bracket and the speaker's body.

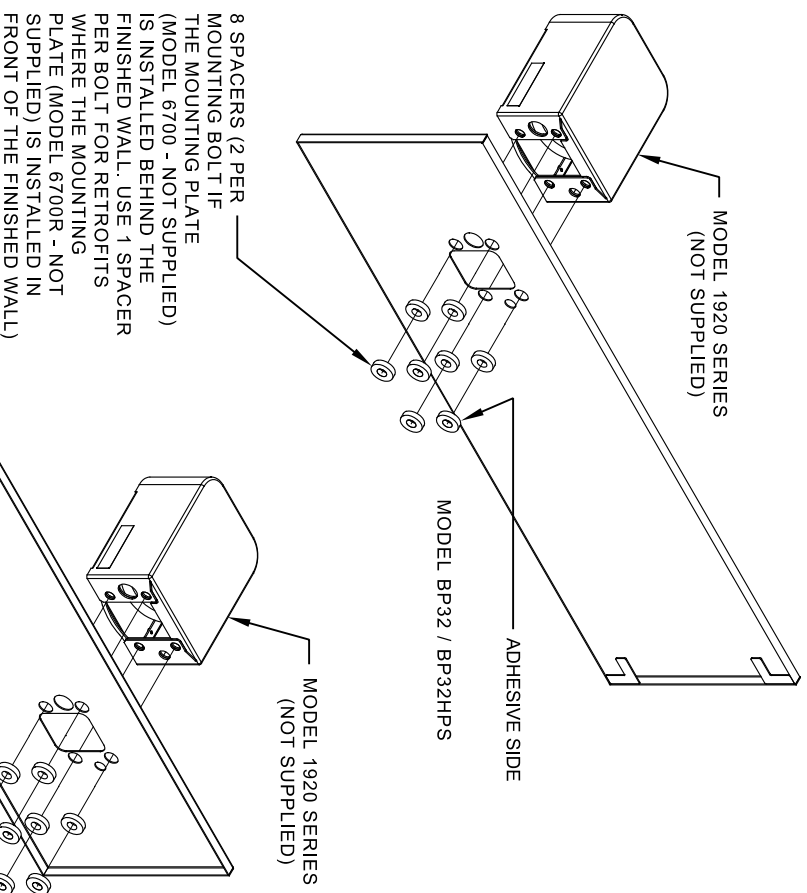
PLACE THE BACKPLATE AGAINST THE WALL AND SLIDE SIDEWAYS SO THE TABS CATCH UNDER THE BRACKET.



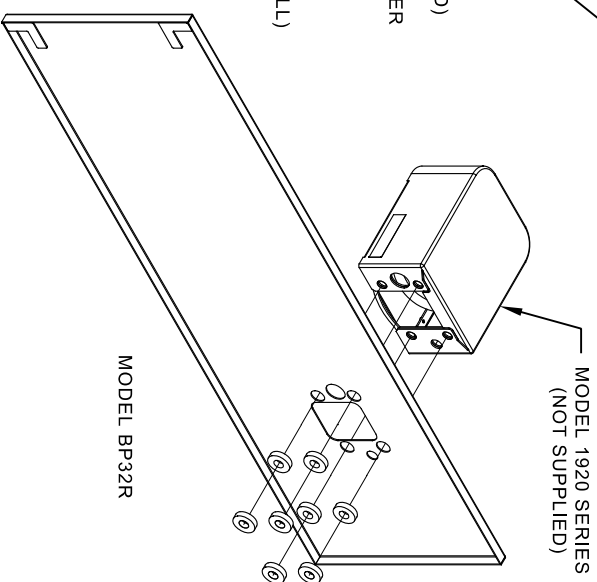
INSTALL THE BOTTLE FILLER (NOT SUPPLIED) PER THE INSTRUCTIONS SUPPLIED WITH THE UNIT.

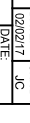
1. WHEN INSTALLING THIS UNIT, LOCAL, STATE OR FEDERAL CODES SHOULD BE ADHERED TO.

- 2. BOTTLE FILLERS, DRINKING FOUNTAINS & DRINKING FOUNTAIN BACK PANELS SHOWN FOR REFERENCE ONLY (NOT SUPPLIED).**



SHOWN FROM REAR



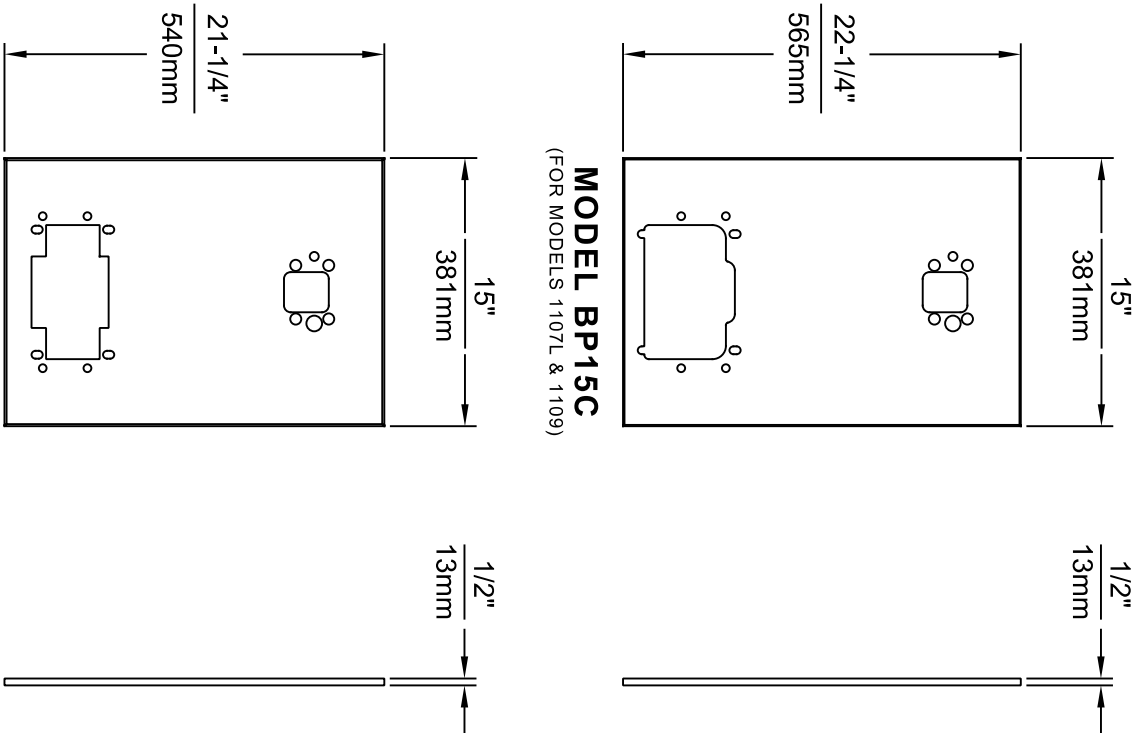


HAWSCO
Since 1906

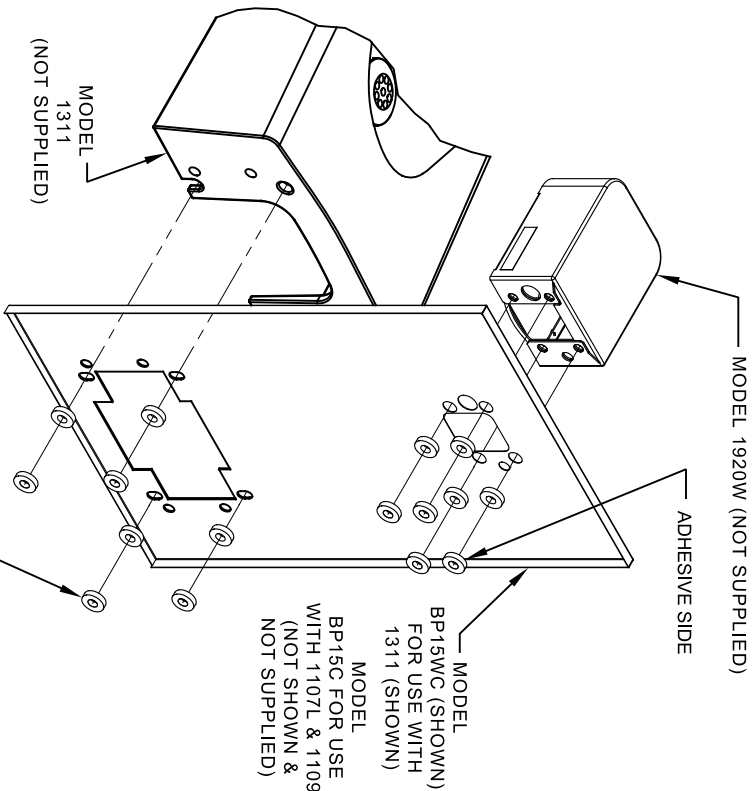
1455 KLEPPE LANE
SPARKS, NE VADA 89431
(775) 359-4712 FAX (775) 359-1424
E-MAIL: HAWSCO@HAWSCO.COM
WEBSITE: WWW.HAWSCO.COM

EON NO. 5081		REVEN PER BY		FV	
EON 50927		DATE		CHD	
MU		DATE		JC	
APPROVED		DATE		FV	
FV		DATE		FV	
SCALE		DRAWING TYPE		INSTALLATION	
1:1		1:1		1:1	
SHEET		SHEET		SHEET	
2		2		2	
OF		OF		OF	
3		3		3	
PART NUMBER		REVISION		DATE	
05110000493		5		05/10/00	

**DRAWING: BACK PANEL, SPACER INSTALLATION
FOR BP15 SERIES & BP32 SERIES, BOTTLE FILLER**



- NOTES:
1. WHEN INSTALLING THIS UNIT, LOCAL, STATE OR FEDERAL CODES SHOULD BE ADHERED TO.
 2. BOTTLE FILLER AND DRINKING FOUNTAIN SHOWN FOR REFERENCE ONLY (NOT SUPPLIED).



16 SPACERS (2 PER MOUNTING BOLT IF BOTH MOUNTING PLATES (MODEL 6700 - NOT SUPPLIED) ARE INSTALLED BEHIND THE FINISHED WALL. USE 1 SPACER PER BOLT FOR RETROFITS WHERE BOTH MOUNTING PLATES (MODEL 6700R - NOT SUPPLIED) ARE INSTALLED IN FRONT OF THE FINISHED WALL)

ONE PIECE INSTALLATION ON SINGLE FOUNTAIN


SHOWN FROM REAR

(MODEL BP15C & BP15WC ARE COMBINATION BOTTLE FILLER AND FOUNTAIN BACK PANELS USED FOR CHILD HEIGHT APPLICATIONS ONLY ON MODELS 1107L, 1109 & 1311 - BOTTLE FILLER & DRINKING FOUNTAIN NOT SUPPLIED)

				1455 KLEPPER LANE SPARKS, NEVADA 89431 (775) 359-4712 FAX (775) 359-424 E-MAIL: HAWS@HAWS.CO.COM WEBSITE: WWW.HAWS.CO.COM			
ECON. REVISED PERBY:				MODEL(S)			
DRAWN: 9972				DRAWING, BACK PANEL, SPACER INSTALLATION			
DATE: 12/13/23				FOR BP15 SERIES & BP32 SERIES, BOTTLE FILLER			
APPROVED: FV				PART NUMBER			
DATE: 04/19/24				REVISION			
SCALE: 1" = 1'				5			
DRAWING TYPE: INSTALLATION				SIZE: A1 SHEET 3 OF 3			

6700 INDEX

INSTALLATION WITH:	TYPICAL USES	SEE SHEET ...
GENERAL INSTALLATION	IMPORTANT INFORMATION FOR ALL INSTALLATIONS	3 OF 6
1001 BOWLS	HAWS SERIES 1001X, 1001.8X	3 OF 6
1107 BOWLS	HAWS SERIES 1107X, 1107.8X	3 OF 6
1109 BOWLS	HAWS SERIES 1109X, 1109.8X	3 OF 6
1047 BOWLS	HAWS SERIES 1047	4 OF 6
1011 BOWLS	HAWS SERIES 1011X, 1011.8X	4 OF 6
1119 BOWLS	HAWS SERIES 1119X, 1119.8X	4 OF 6
1117 BOWLS	HAWS SERIES 1117X, 1117.8X	5 OF 6
1311 BOWLS	HAWS SERIES 1311	5 OF 6
1501 BOWLS	HAWS SERIES 1501	5 OF 6
CHILD HEIGHT	HAWS 1107PCH, 1109PCH, 1311PCH	6 OF 6



Haws

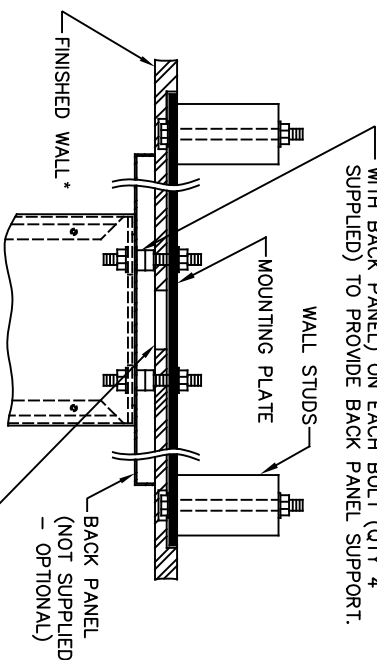
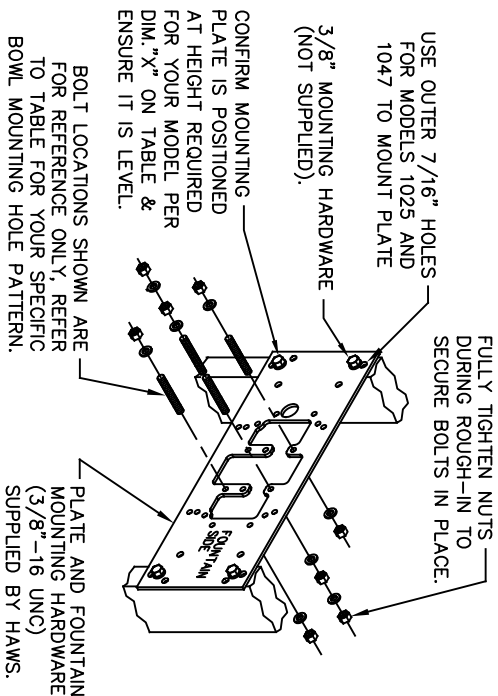
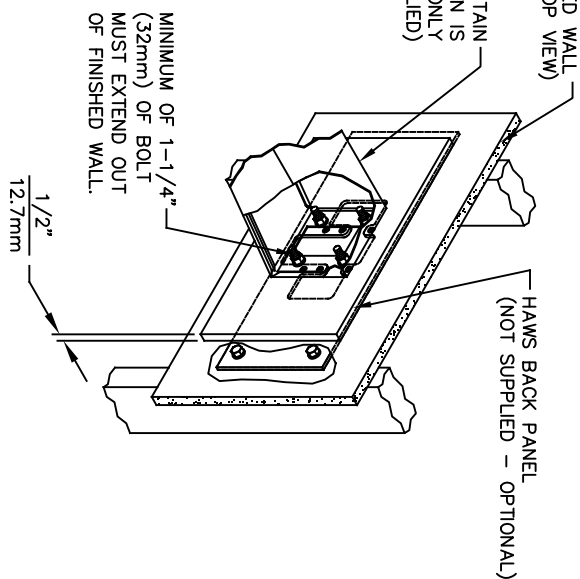
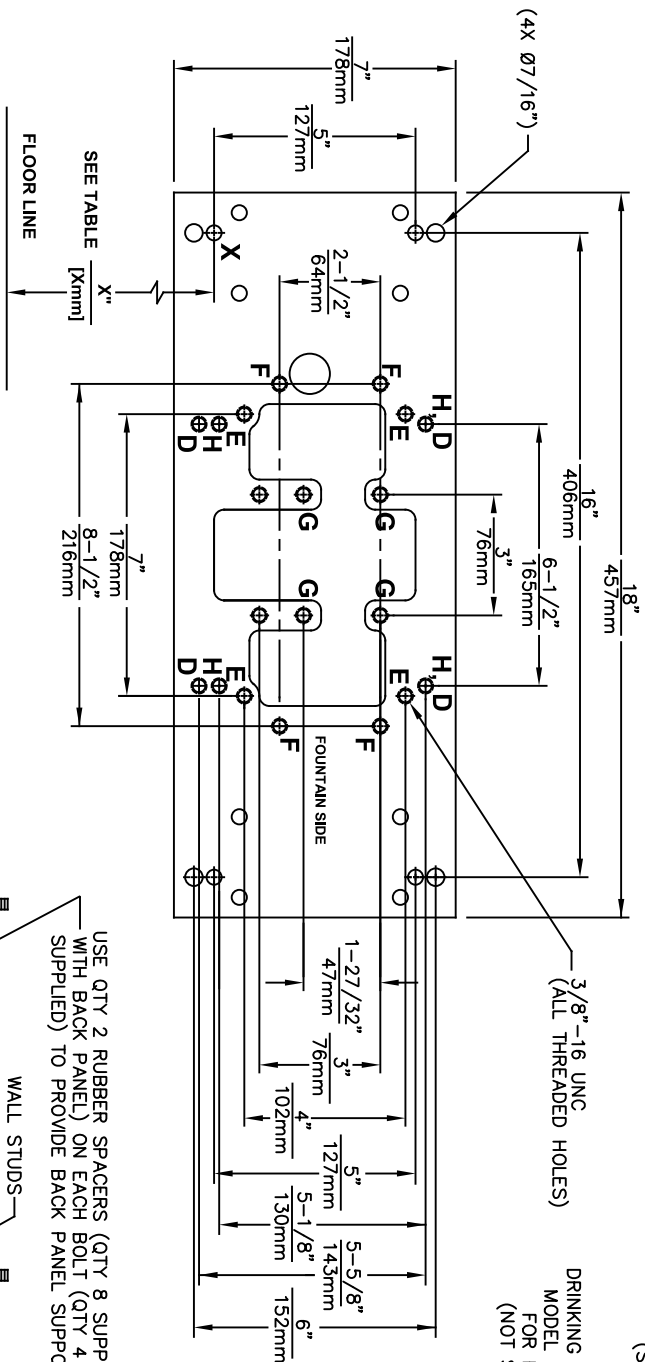
Since 1906

1455 KLEPPE LANE
SPARKS, NEVADA 89431
(775) 359-4712 FAX (775) 359-7424
E-MAIL: HAWS@HAWSCO.COM
WEBSITE: WWW.HAWSCO.COM

ECN NO. REVISED PER BY: JG
DRAWN: JG
DATE: 10/03/24
APPROVED: JG

MODEL(S)
67/00

PART NUMBER
0002080016
REVISION
26



DRINKING FOUNTAIN (ONLY) AT 27" ADULT HEIGHT (SEE SPECIFIC MODEL O&M'S FOR OTHER HEIGHTS)			
MODEL	USE BOWL MTG. HOLE PATTERN	USE "X" DIM. BELOW TO POSITION MOUNTING PLATE HOLE "X"	
1001	"G"	25-3/8" [645mm]	
1025	"D"	28-1/8" [714mm]	
1047	"E"	24-3/8" [619mm]	
1105	"H"	34-5/16" [872mm]	
1107	"F"	26-3/16" [665mm]	
1109	"H"	27-5/16" [694mm]	
1109.14	"H"	27-5/16" [694mm]	
1109FR	"H"	27-5/16" [694mm]	
1311	"E"	26-3/4" [679mm]	
WASTE DRIP TRAY (ONLY) AT 27" ADULT HEIGHT			
6468	"G"	25-3/8" [645mm]	
1922	"G"	25-3/8" [645mm]	

TOP VIEW

6700 MOUNTING PLATE

FOR USE WITH

DRINKING FOUNTAINS

AND WASTE DRIP TRAYS

AT 27" ADULT HEIGHT

(SEE SHEETS 2 - 5 FOR USE WITH


BOTTLE FILLER 1920/1920HO SERIES

AND CHILD HEIGHT APPLICATIONS)

****FINISH WALL OVER MOUNTING PLATE AND BEHIND BACK PANEL. MAKE SURE THAT FINISHED WALL EXTENDS WITHIN THE BRACKET/BOWL MOUNTING HOLES (TO PROVIDE SURFACE AREA FOR RUBBER SPACERS TO CONTACT).**

CAUTION

REGARDING CONCRETE/MASONRY WALL MOUNTING: DO NOT SECURE MOUNTING PLATE TO SAME SIDE OF WALL AS FOUNTAIN. AVOID COMPROMISING INTEGRITY OF WALL WHEN ANCHORING FOUNTAIN. IT IS RECOMMENDED THAT INSTALLER CALL TECHNICAL SUPPORT IF THERE ARE ANY QUESTIONS AS TO HOW TO OBTAIN A PROPER ANCHOR IN CONCRETE/MASONRY WALLS. 1-800-766-5612

**Haws®**
Since 1906

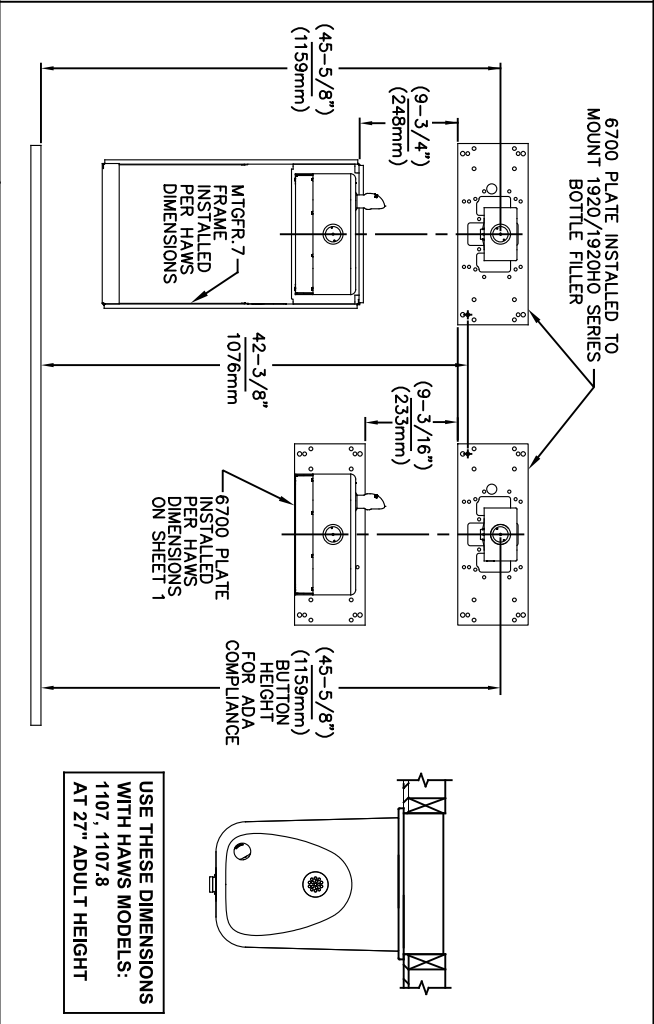
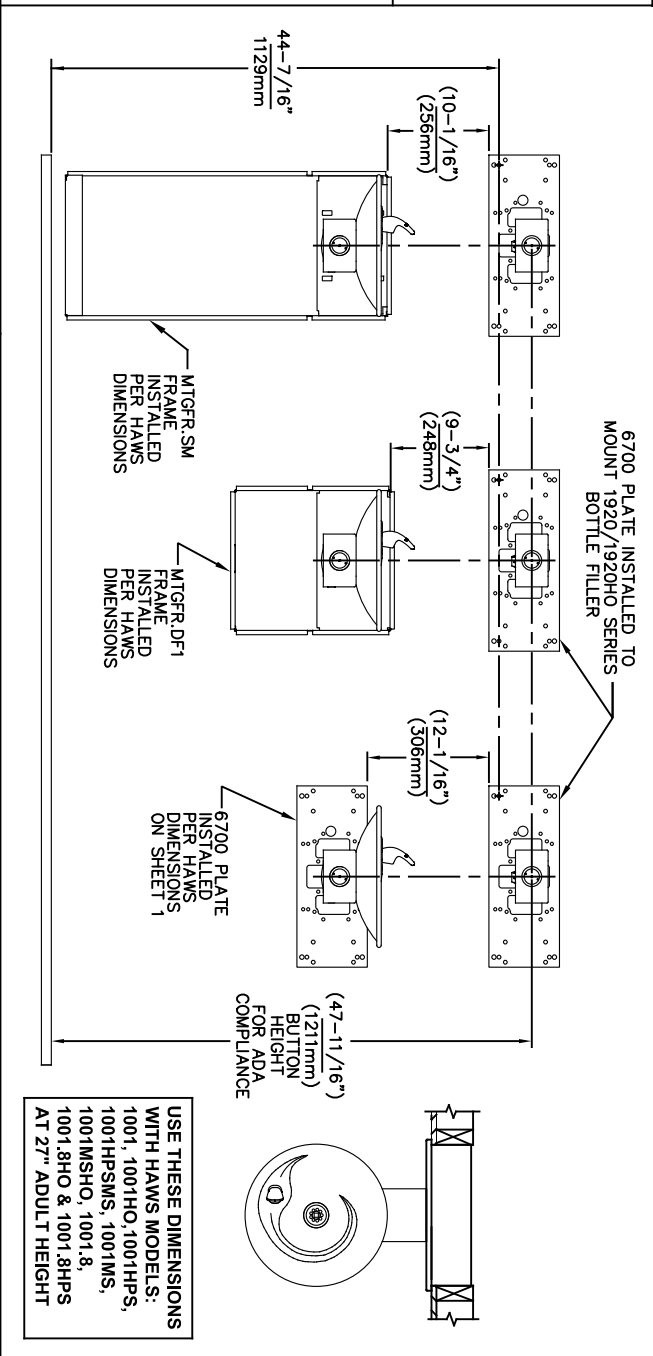
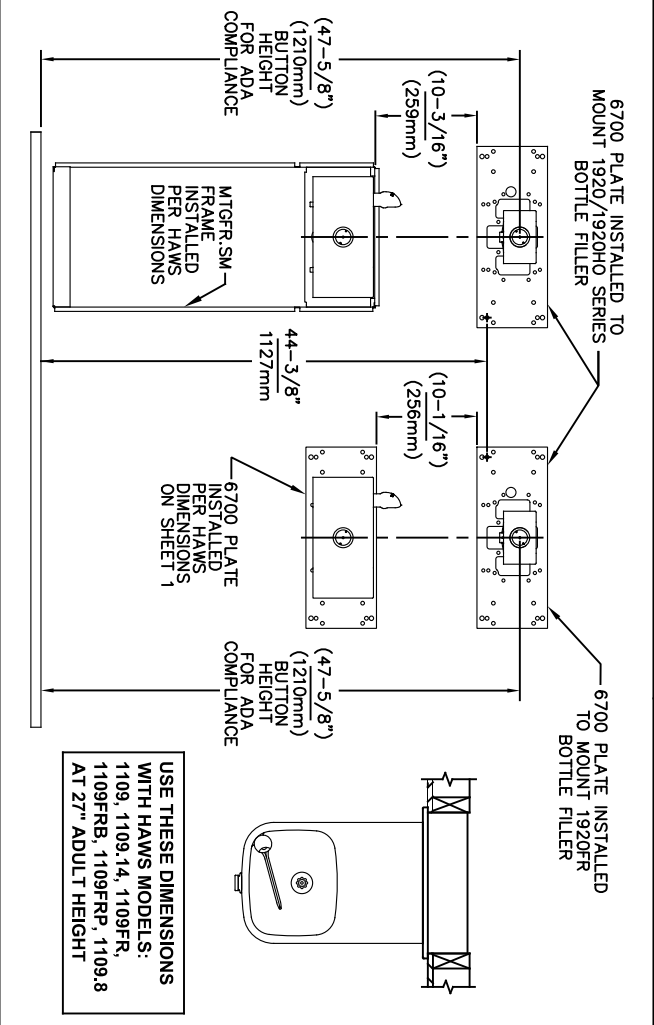
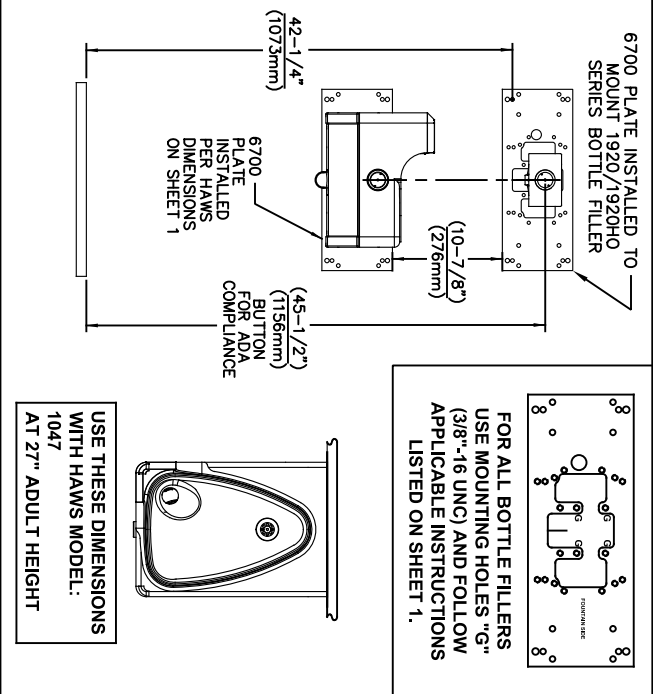
ECN NO. REVISED PERBY:
DRAWN: DATE: CHK'D:
CJL 09-03-03 JG
APPROVED: DATE:
FV 02/11/25

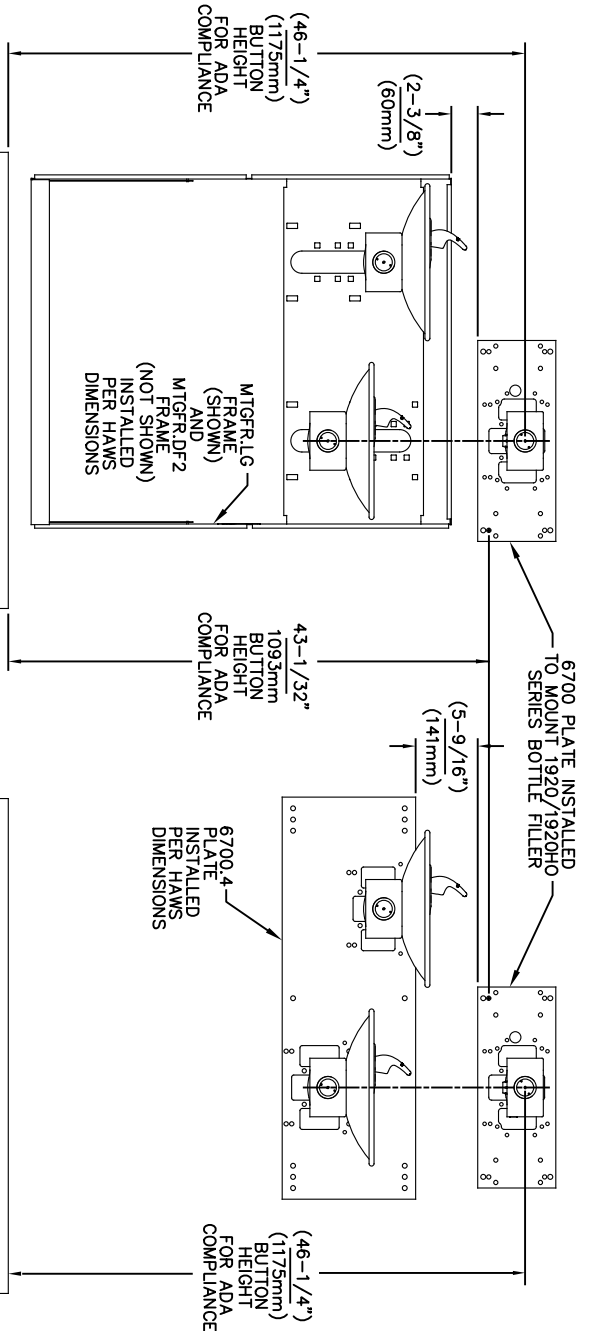
SCALE: N/A DRAWING TYPE: INSTALLATION SIZE: A SHEET: 2 OF 6

1455 KLEPPE LANE
SPARKS, NEVADA 89431
(775) 359-4712 FAX (775) 359-7424
E-MAIL: HAWS@HAWS.CO.COM
WEBSITE: WWW.HAWS.CO.COM

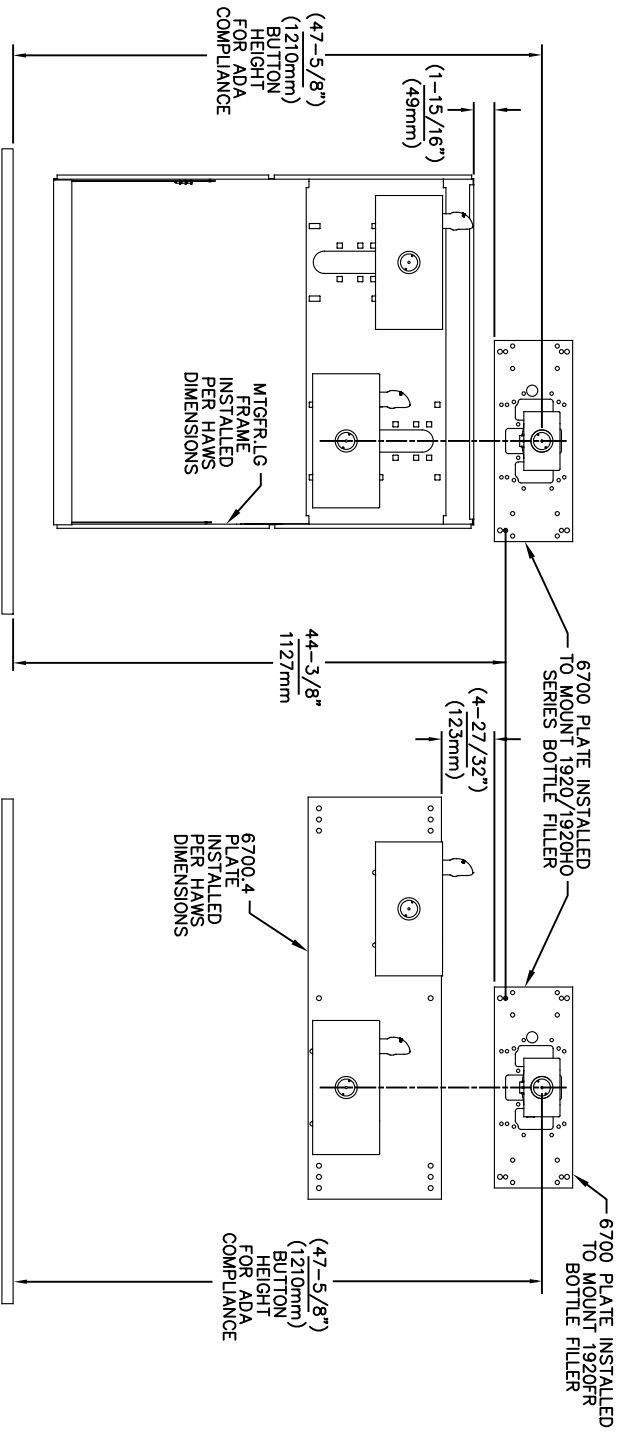
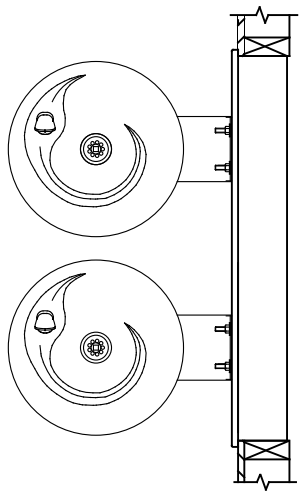
PART NUMBER
0002080016
REVISION
26

MODEL(S)
67/00

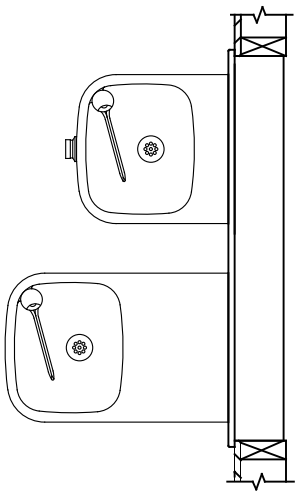




USE THESE MOUNTING DIMENSIONS IF INSTALLING OVER HAWS FOUNTAIN
MODEL: 1011, 1011HO, 1011HO2, 1011HPS, 1011HPSHO, 1011HPSHO2, 1011HPSMS, 1011HMS, 1011MSHO, 1011MSHO2, 1011.8, 1011.8HO, 1011.8HO2 & 1011.8HPSM AT 27" ADULT HEIGHT
INSTALL THE 6700 ABOVE THE FOUNTAIN MOUNTING PLATE OR FRAME AT THE DIMENSION SHOWN FOR CORRECT BACKPANEL SPACING
BACK PANELS FOR BOTTLE FILLERS (NOT SUPPLIED - OPTIONAL) ARE NOT SHOWN FOR CLARITY.




USE THESE MOUNTING DIMENSIONS IF INSTALLING OVER HAWS FOUNTAIN
MODEL: 1119, 1119.14, 1119.14HO, 1119.14HO2, 1119FR, 1119FRB, 1119FRP, 1119HO, 1119HO2 & 1119.8 AT 27" ADULT HEIGHT
INSTALL THE 6700 ABOVE THE FOUNTAIN MOUNTING PLATE OR FRAME AT THE DIMENSION SHOWN FOR CORRECT BACKPANEL SPACING
BACK PANELS FOR BOTTLE FILLERS (NOT SUPPLIED - OPTIONAL) ARE NOT SHOWN FOR CLARITY.



- NOTES:
1. WHEN INSTALLING THIS UNIT, LOCAL, STATE OR FEDERAL CODES SHOULD BE ADHERED TO.
 2. BACK PANELS (OPTIONAL) NOT SHOWN FOR CLARITY.

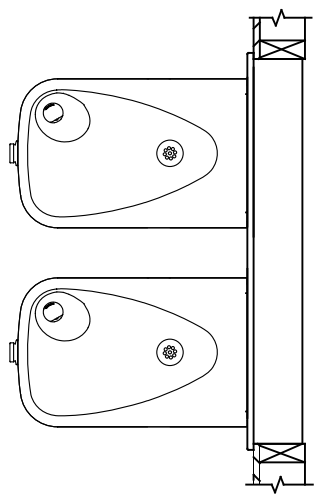
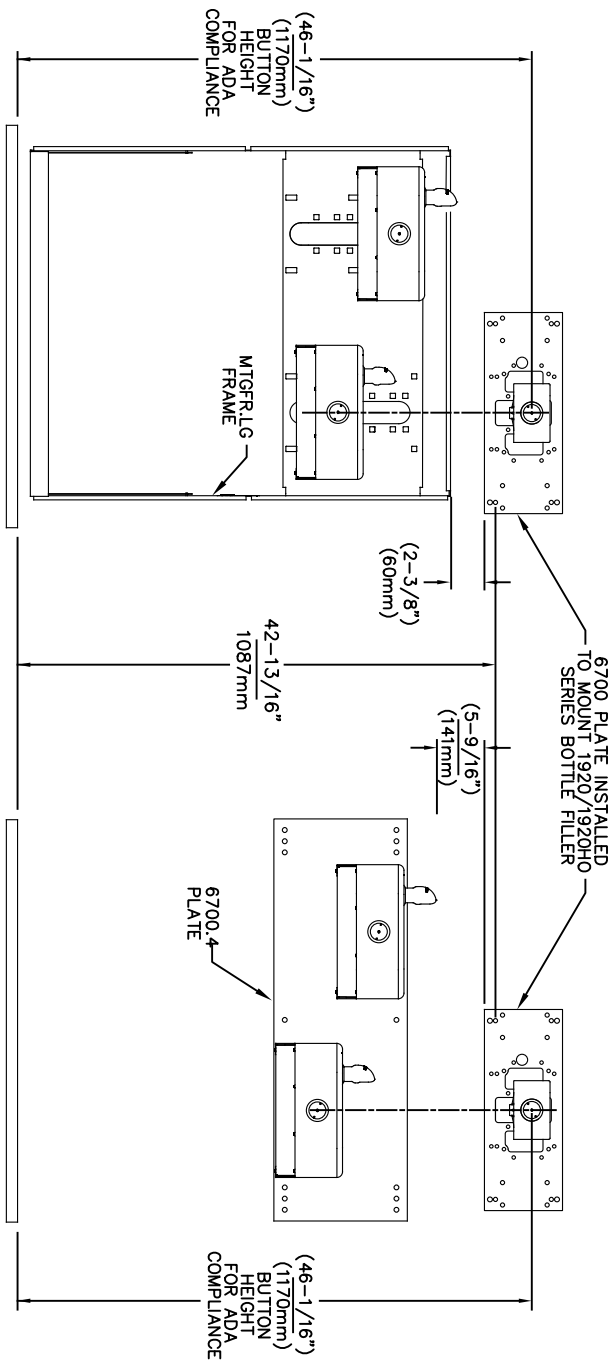
6700 MOUNTING PLATE
FOR USE WITH BOTTLE FILLER
(SEE SHEET 1 FOR USE WITH
DRINKING FOUNTAINS)



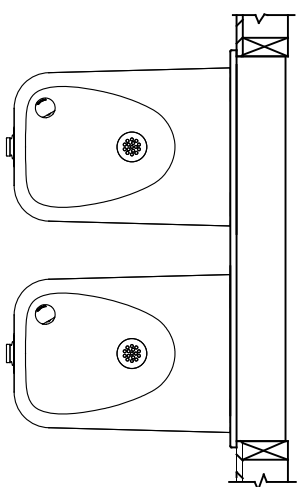
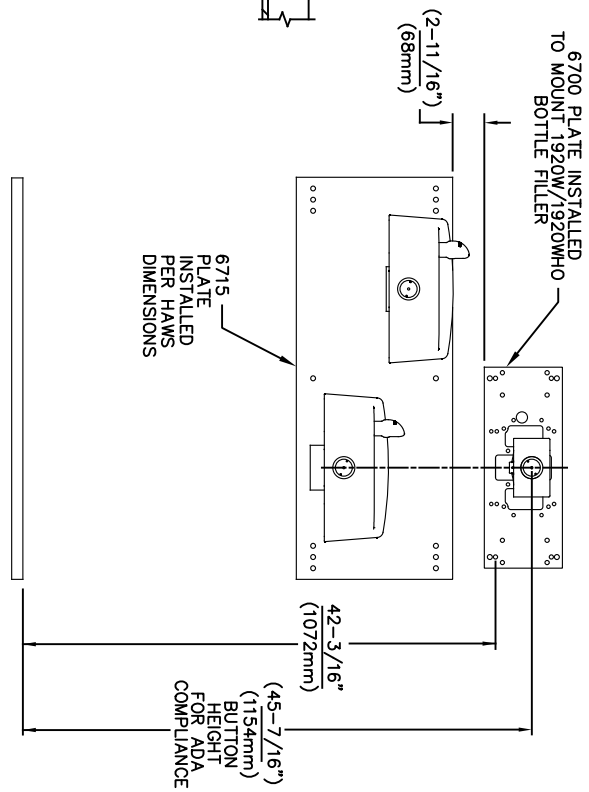
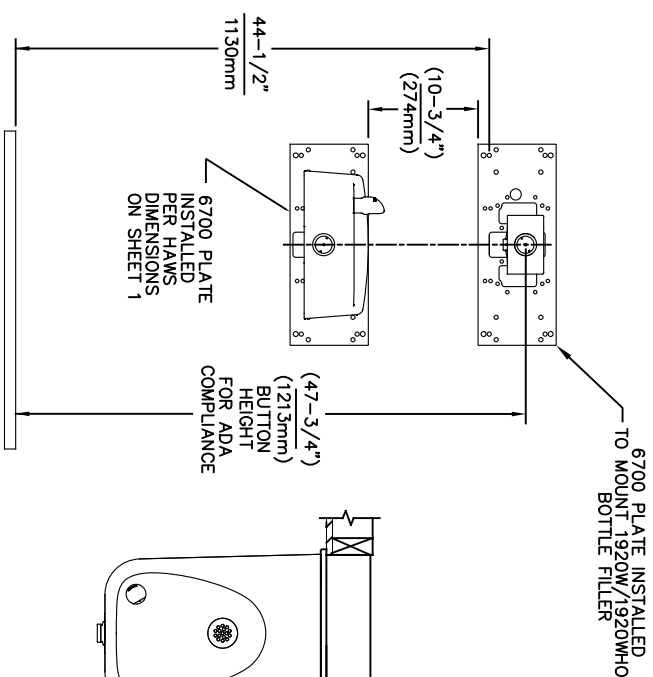
Since 1906

1456 KLEPPE LANE
SPARKS, NEVADA 89431
(775) 359-4712 FAX (775) 359-7424
E-MAIL: HAWS@HAWS.CO.COM
WEBSITE: WWW.HAWS.CO.COM

ECN NO. REVISED PERBY:	MODEL(S)
5550 ECN 6148 JG	6700
DRAWN: DATE: CHKD: JG	
FW: 05/14/20	
APPROVED: DATE: 02/11/25	
FW:	
SCALE: 1:13	DRAWING TYPE: INSTALLATION
SHEET 4 OF 6	REVISION: 26



USE THESE MOUNTING DIMENSIONS IF INSTALLING OVER HAWS FOUNTAIN MODEL: 1117, 1117.8 AT 27" ADULT HEIGHT
INSTALL THE 6700 ABOVE THE FOUNTAIN MOUNTING PLATE OR FRAME AT THE DIMENSION SHOWN FOR CORRECT BACKPANEL SPACING
BACK PANELS FOR BOTTLE FILLERS (NOT SUPPLIED - OPTIONAL) ARE NOT SHOWN FOR CLARITY.



USE THESE MOUNTING DIMENSIONS IF INSTALLING OVER HAWS FOUNTAIN MODEL: 1311, 1501 AT 27" ADULT HEIGHT
INSTALL THE 6700 ABOVE THE FOUNTAIN MOUNTING PLATE AT THE DIMENSION SHOWN FOR CORRECT BACKPANEL SPACING (IF APPLICABLE).
BACK PANEL FOR BOTTLE FILLER (NOT SUPPLIED - OPTIONAL) IS NOT SHOWN FOR CLARITY.

- NOTES:
1. WHEN INSTALLING THIS UNIT, LOCAL, STATE OR FEDERAL CODES SHOULD BE ADHERED TO.
 2. BACK PANELS (OPTIONAL) NOT SHOWN FOR CLARITY.

6700 MOUNTING PLATE
FOR USE WITH BOTTLE FILLER
(SEE SHEET 1 FOR USE WITH
DRINKING FOUNTAINS)

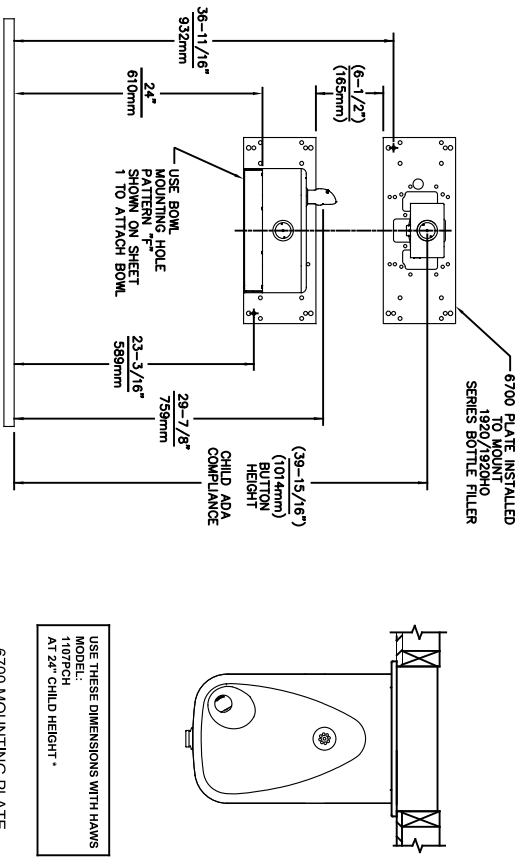


Since 1906

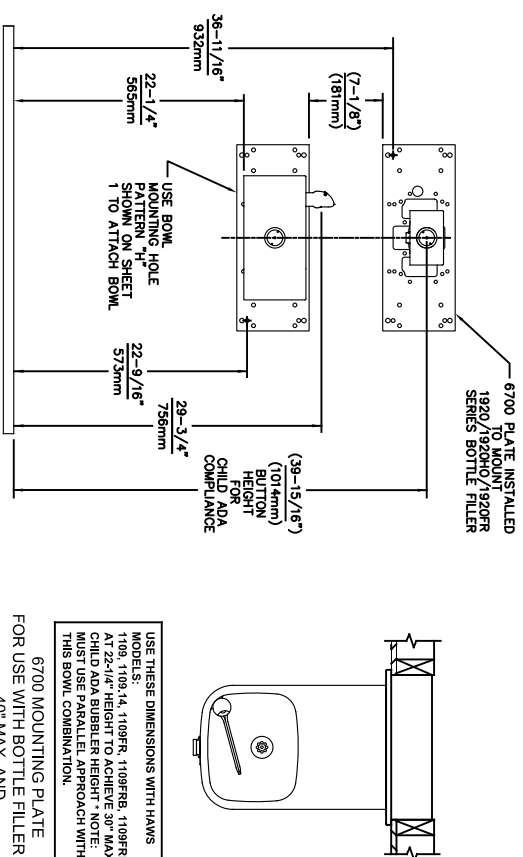
ECN NO. REVISED PERBY:	MODEL(S)
5550	6700
DRAWN: FV	DATE: 05/14/20
CHKD: JG	
APPROVED: FV	DATE: 02/11/25
SCALE: 1:13	DRAWING TYPE: INSTALLATION
SHEET 5	OF 6

1456 KLEPPE LANE
SPARKS, NEVADA 89431
(775) 359-4712 FAX (775) 359-7424
E-MAIL: HAWS@HAWS.CO.COM
WEBSITE: WWW.HAWS.CO.COM

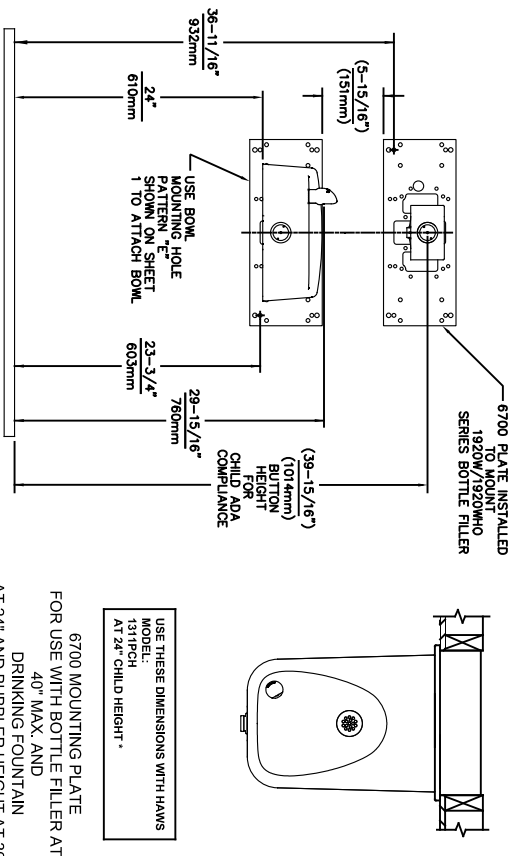
PART NUMBER
0002080016
REVISION
26



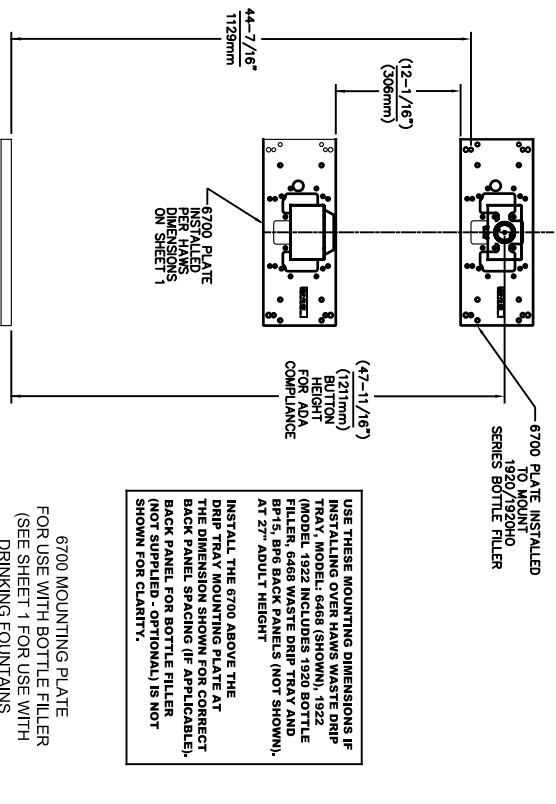
6700 MOUNTING PLATE
FOR USE WITH BOTTLE FILLER AT
40\" MAX. AND
DRINKING FOUNTAIN
AT 24\" AND BUBBLER HEIGHT AT 30\"
MAX. FOR CHILD ADA HEIGHT
(SEE SHEETS 1 & 2 FOR USE WITH
DRINKING FOUNTAIN AT 27\" ADULT
HEIGHT DIMENSIONS)




6700 MOUNTING PLATE
FOR USE WITH BOTTLE FILLER AT
40\" MAX. AND
DRINKING FOUNTAIN
BUBBLER HEIGHT AT 30\" MAX.
FOR CHILD ADA HEIGHT
MUST USE PARALLEL APPROACH
WITH THIS BOWL COMBINATION
(SEE SHEETS 1 & 2 FOR USE WITH
DRINKING FOUNTAIN AT 27\" ADULT
HEIGHT DIMENSIONS)



6700 MOUNTING PLATE
FOR USE WITH BOTTLE FILLER AT
40\" MAX. AND
DRINKING FOUNTAIN
AT 24\" AND BUBBLER HEIGHT AT 30\"
MAX. FOR CHILD ADA HEIGHT
(SEE SHEETS 1 & 4 FOR USE WITH
DRINKING FOUNTAIN AT 27\" ADULT
HEIGHT DIMENSIONS)



6700 MOUNTING PLATE
FOR USE WITH BOTTLE FILLER
(SEE SHEET 1 FOR USE WITH
DRINKING FOUNTAINS
AND WASTE DRIP TRAY)



Since 1906

1456 KLEPPE LANE
SPARKS, NEVADA 89431
(775) 359-4712 FAX (775) 359-7424
E-MAIL: HAWS@HAWS.CO.COM
WEBSITE: WWW.HAWS.CO.COM

ECN NO. REVISED PERBY: MODEL(S)
5893 1 ECN: 6148 JG
DRAWN: DATE: CHKD:
FV 07/26/23 JG
APPROVED: DATE: SCALE: 1:13 DRAWING TYPE: INSTALLATION SHEET A OF 6
REVISION: 26