

## FEATURES & BENEFITS

### CONSTRUCTION

Fountain is made of 18 gauge Type 304 stainless steel, and bottle filler made of 14-gauge Type 304 stainless steel, both with a satin finish that resists stains and corrosion, and have soft, rounded corners. Unit features stainless steel satin finish back panels, vandal-resistant bottom plates, and 1-1/4" integral trap.

### FREEZE-RESISTANT VALVES

Fully engineered system with the pneumatic-operated, freeze-resistant valves mounted in cabinets that are installed on the inside wall where room temperature does not drop below 50° F (10° C). When valves goes to off position, water left in supply line between valve and bubbler or bottle filler drains back into waste inside cabinet, protecting the unit from freezing, and allowing fountain to function year-round.

### MOUNTING PLATES

In-wall 3/16" thick steel mounting plates add extra wall support when mounting the fountain and bottle filler.

### BUBBLER HEAD

Polished chrome-plated brass bubbler head with integral 11/16" dia. basin shank and stainless anti-rotation roll pin for vandal resistance strength. Shielded, angled stream opening provides a steady, sanitary source of drinking water at .45 gpm.

### VANDAL RESISTANT

The bubbler head, push button, drain strainer and bottom plate are locked in place, discouraging unwanted vandal tampering.

## OPTIONS

- Support Frame: Model 6800 universal in-wall mounting support for use with most fountains.

For more information, visit [www.hawsc.com](http://www.hawsc.com) or call (888) 640-4297.



## SPECIFICATIONS

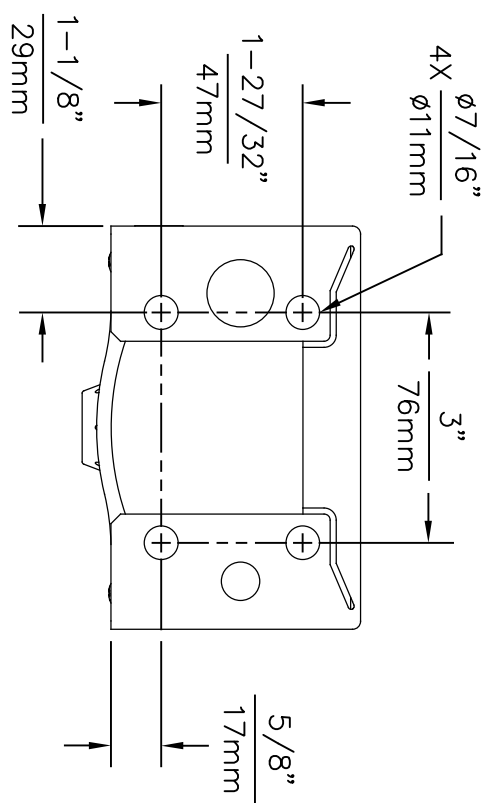
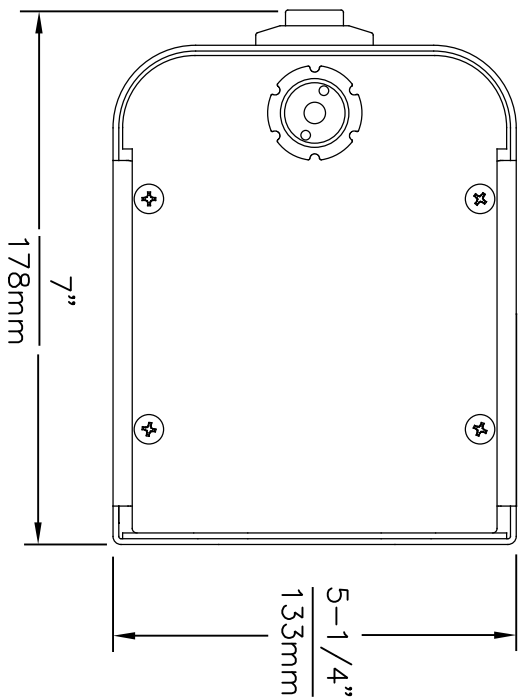
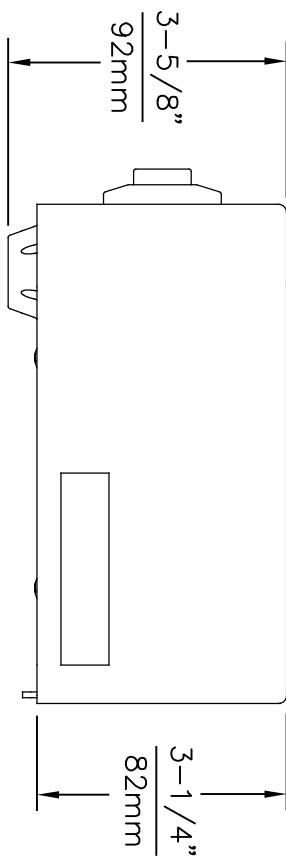
Model 1109FRP wall mounted vandal-resistant barrier-free drinking fountain and bottle filler shall include an 18 gauge Type 304 Stainless Steel satin finish basin, drip tray for bottle placement during filling, polished chrome-plated brass vandal-resistant bubbler head, polished chrome-plated brass vandal-resistant push-buttons, pneumatic valves installed on the inside wall where room temperatures do not drop below 50° F (10° C), in-wall 3/16" thick steel mounting plates for fountain and bottle filler, self-draining water lines which protect the unit from freezing, stainless steel pack panels, polished chrome-plated brass vandal resistant waste strainer, vandal-resistant stainless bottom plates, and 1-1/4" O.D. (3.2 cm) waste pipe.

## APPLICATIONS

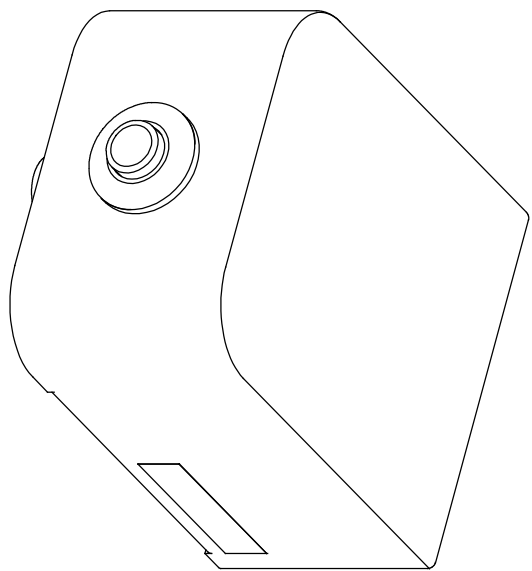
Perfect for either public or private outdoor settings, Model 1109FRP is a great fit in areas where aesthetics are important to the overall appeal of the architecture. Beautiful satin finish helps to maintain the fountains overall appeal. Specifically, this type of wall mounted drinking fountain may be placed in settings such as: parks, schools, and other facilities where the temperature may drop into freezing conditions. Model meets all current Federal Regulations for the disabled including those in the Americans with Disabilities Act. Haws manufactures drinking fountains, faucets and electric water coolers to be lead-free by all known definitions including NSF/ANSI/CAN 61-Section 9, NSF/ANSI/CAN 372, California Proposition 65, and the Federal Safe Drinking Water Act. Product is compliant to California Health and Safety Code 116875 (AB 1953-2006), and 116876 (AB 100) "NSF/ANSI/CAN 61: Q ≤ 1".







1920FR MOUNTING HOLE LOCATIONS

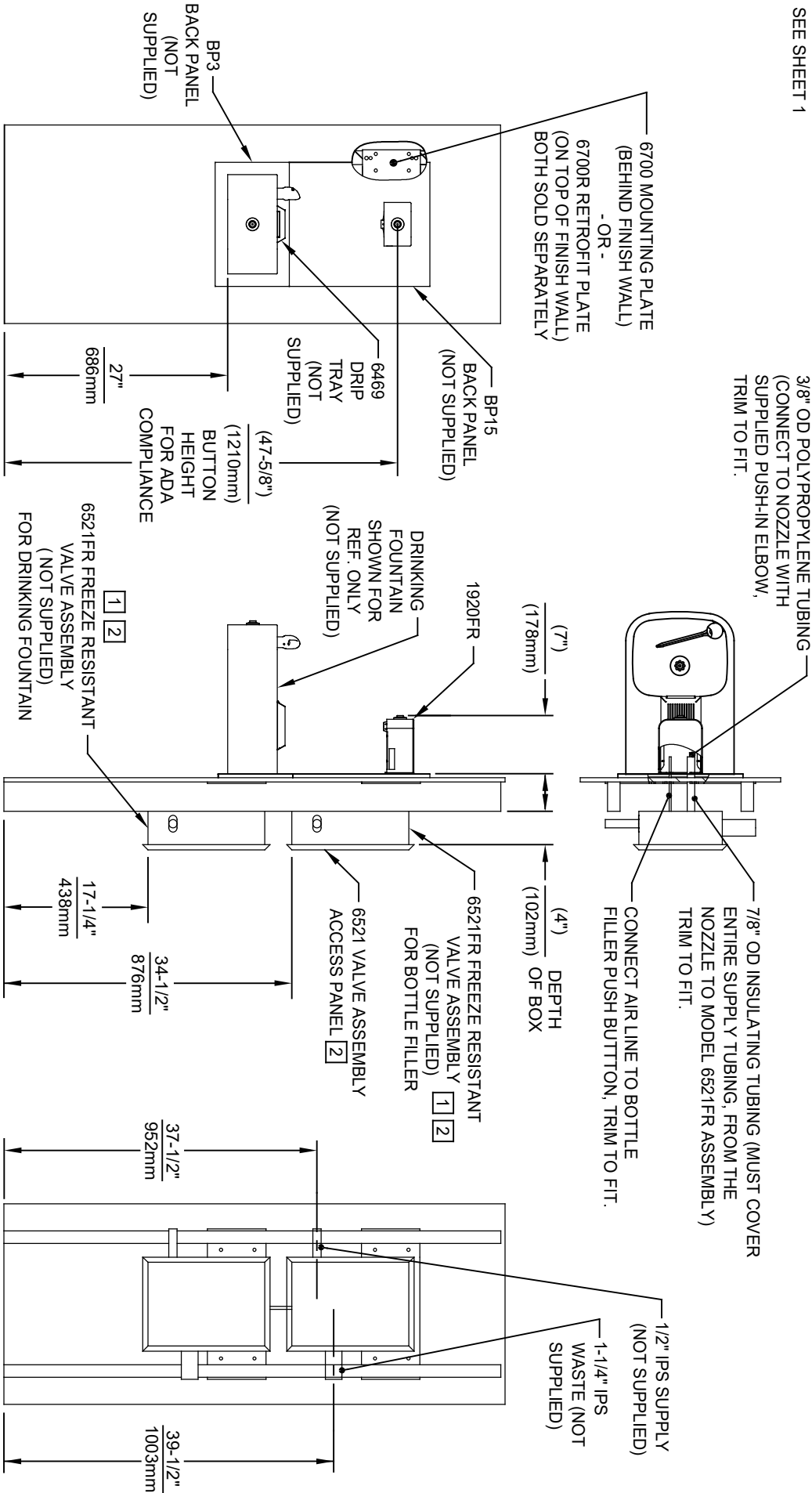


NOTES:

- 1 THIS BOTTLE FILLER REQUIRES THE USE OF MODEL 6521FR FREEZE RESISTANT VALVE ASSEMBLY (SOLD SEPERATELY OR AS PART OF PRODUCT BUNDLES).
- 2 VALVE ASSEMBLY MUST BE INSTALLED IN A WARM AREA. PROVISIONS SHOULD BE MADE TO ALLOW ACCESS TO THE ACCESS PANEL.
- 3 SEE SEPERATE INSTALLATION DRAWINGS FOR MOUNTING PLATES, AND BACK PANELS (SHOWN FOR REFERENCE ONLY - NOT SUPPLIED).
- 4 WHEN INSTALLING THIS UNIT, LOCAL, STATE OR FEDERAL CODES SHOULD BE ADHERED TO FOR INSTALLATION LOCATIONS, WASTE & SUPPLY REQUIREMENTS OTHER THAN SHOWN.

		1455 KLEPPLE LANE SPARKS, NEVADA 89431 (775) 359-4712 FAX (775) 359-7424 E-MAIL: HAWS@HAWSCCO.COM WEBSITE: WWW.HAWSCCO.COM	
ECN NO. REVISED PER BY:	MODEL(S)	SCALE:	INSTALLATION:
9081 ECN: 5883	1920FR	N/A	
DATE: 05/25/16		DRAWING TYPE:	SIZE: A1 SHEET: 1 OF 3
CHKD: KAM			
APPROVED: FV			
DATE: 09/06/23			
ECN NO. REVISED PER BY:	PART NUMBER		
9081 ECN: 5883	0510000491.D		
DATE: 05/25/16	REVISION		
CHKD: KAM	7		
APPROVED: FV			

NOTES:  
SEE SHEET 1

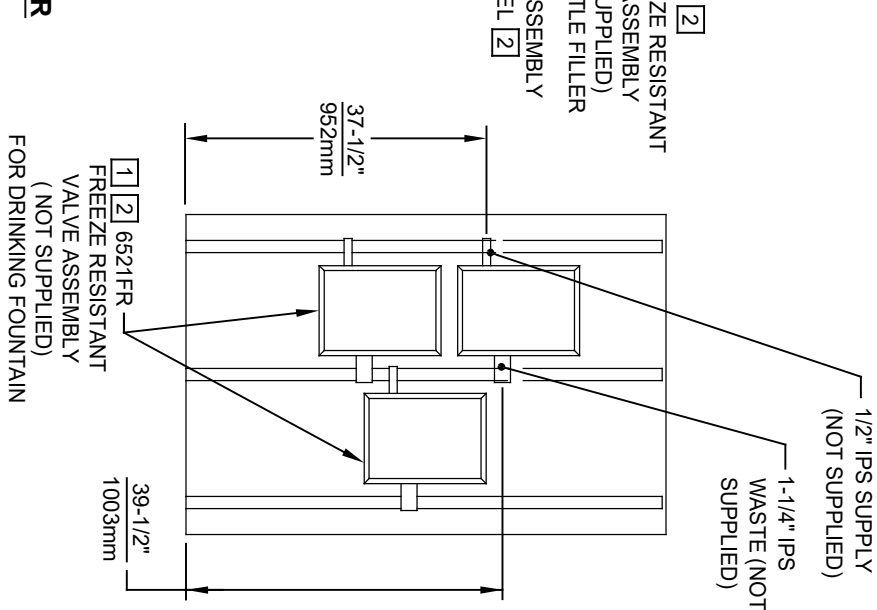
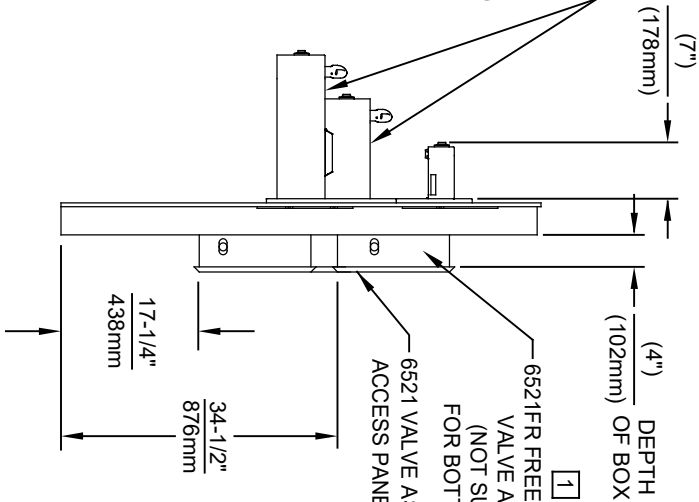
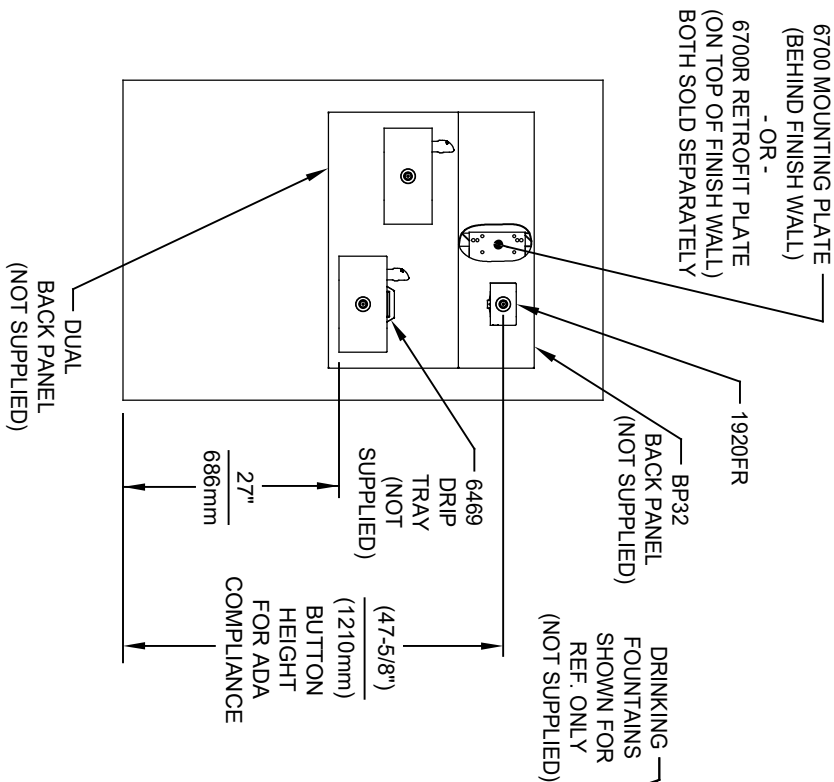
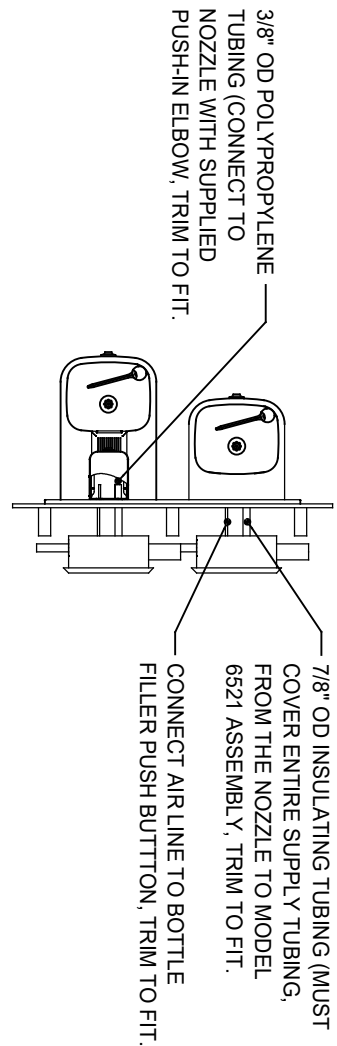


**INSTALLATION SHOWN ABOVE HAWS MODEL 1109FR**

1. SEE SEPARATE INSTALLATION DRAWINGS FOR MOUNTING PLATES AND BACK PANELS (SHOWN FOR REFERENCE - NOT SUPPLIED).
2. WHEN INSTALLING THIS UNIT, LOCAL, STATE OR FEDERAL CODES SHOULD BE ADHERED TO FOR INSTALLATION LOCATIONS, WASTE & SUPPLY REQUIREMENTS OTHER THAN SHOWN.

		1455 KLEPPLE PLANE SPARKS, NEVADA 89431 (775) 359-4712 FAX (775) 359-7424 E-MAIL: HAWS@HAWSCO.COM WEBSITE: WWW.HAWSCO.COM	
EGN NO. REVISED PERMITS:	MODEL(S)	1920FR	
8081 ECN: 5893	DATE:	02/19/17	SCALE: N/A
DATE:	CHKD:	KM	DRAWING TYPE:
APPROVED:	DATE:	09/26/23	INSTALLATION:
REV:	SCALE:	N/A	SIZE: A1 SHEET 2 OF 3
PART NUMBER		0510000491.D	
REVISION		7	


NOTES:  
SEE SHEET 1



**INSTALLATION SHOWN ABOVE HAWS MODEL 1119FR**

1. SEE SEPARATE INSTALLATION DRAWINGS FOR MOUNTING PLATES AND BACK PANELS (SHOWN FOR REFERENCE - NOT SUPPLIED).

2. WHEN INSTALLING THIS UNIT, LOCAL, STATE OR FEDERAL CODES SHOULD BE ADHERED TO FOR INSTALLATION LOCATIONS, WASTE & SUPPLY REQUIREMENTS OTHER THAN SHOWN.



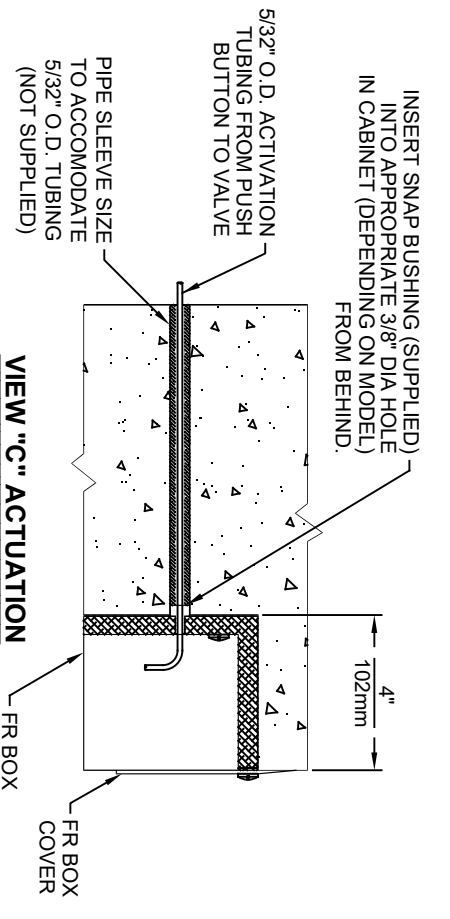
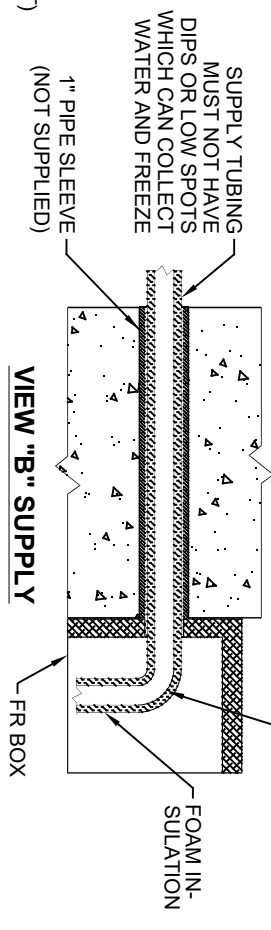
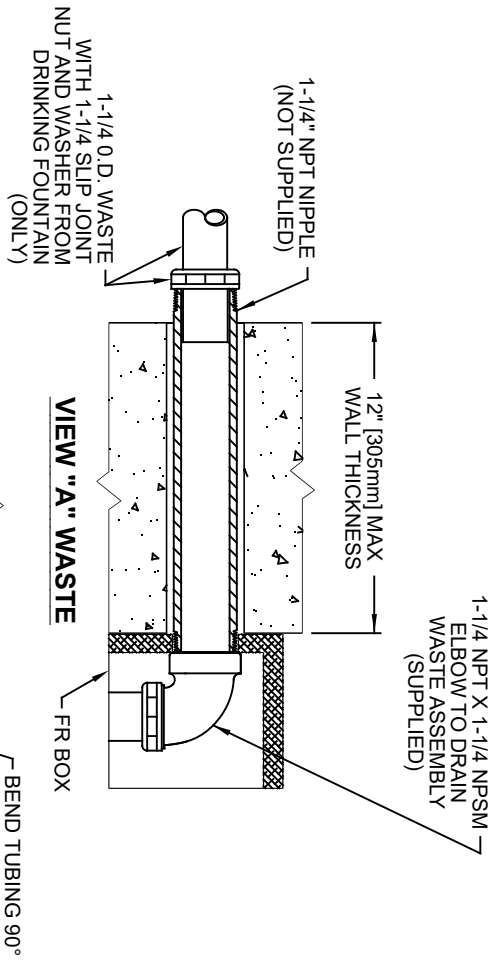
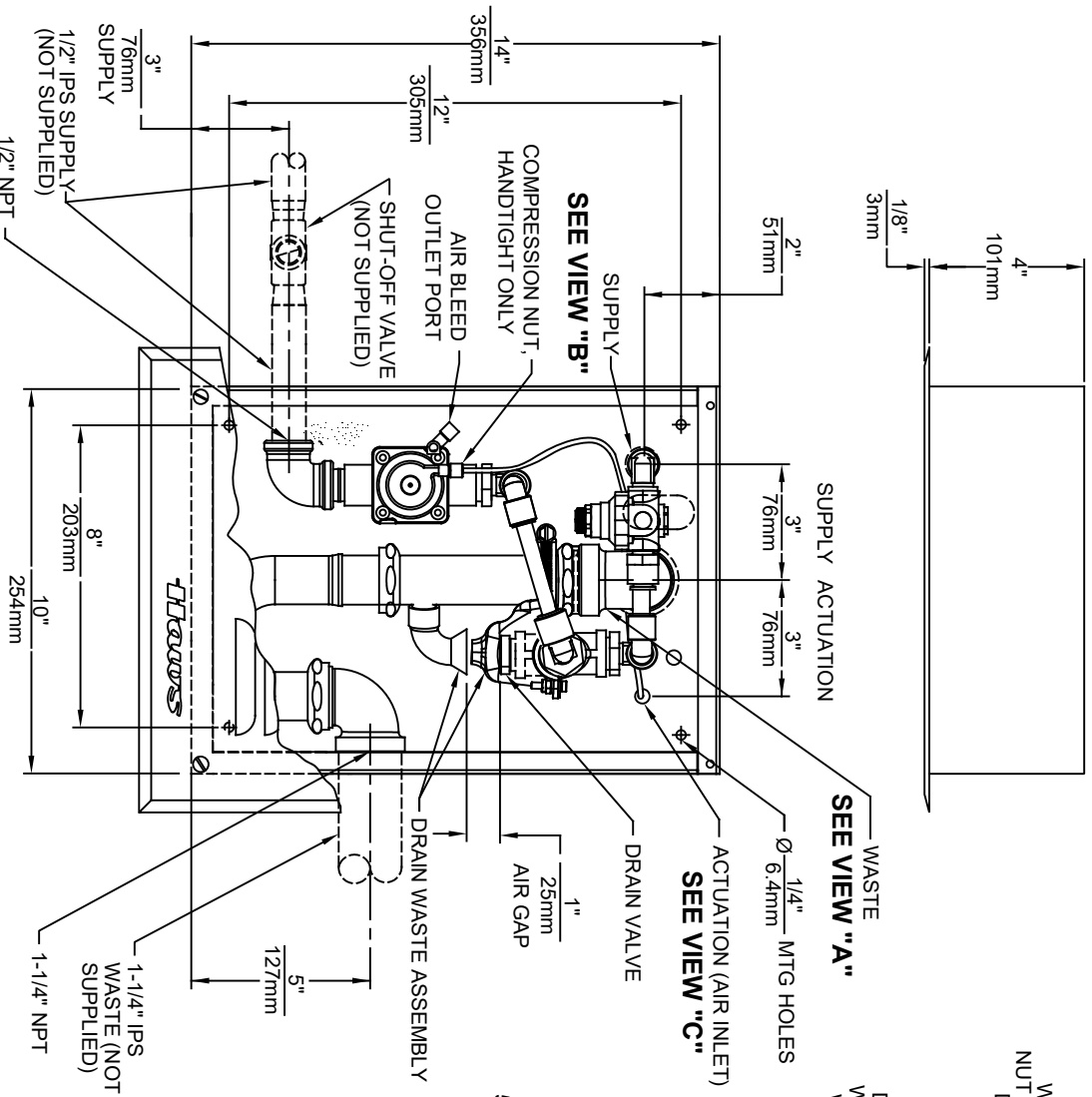
**Haws**

1455 KLEPPER LANE  
SPARKS, NEVADA 89431  
(775) 359-4712 FAX (775) 359-7424  
E-MAIL: HAWS@HAWSCO.COM  
WEBSITE: WWW.HAWSCO.COM

ECN NO.	REVISED PER BY:	MODEL(S)	SCALE:	DATE:	DRAWING TYPE:	INSTALLATION:	SIZE:	SHEET:	OF:
0181	EV	1920FR	N/A	02/19/12	INSTALLATION		A	3	OF 3
DRAWN:	DATE:	CHKD:	DATE:	APPROVED:	SCALE:	DATE:	BY:	NO.	
JUL	02/19/12	KML	02/19/12	EV		02/19/12		7	
PART NUMBER	0510000491.D	REVISION	7						

**NOTES:**

1. UNIT MAY BE RECESSED MOUNTED IN WALL AS SHOWN IN VIEW "C" OR SURFACE MOUNTED AS SHOWN IN VIEWS "A" AND "B".
2. VALVE MUST BE INSTALLED IN SPACE THAT MAINTAINS A MINIMUM OF 50°F (10°C).
3. DRINKING FOUNTAIN AND BOTTLE FILLER MODELS 1109FR & 1920FR EACH REQUIRE A SEPARATE 6521FR UNIT. DUAL DRINKING FOUNTAIN MODEL 1119FR REQUIRES TWO SEPARATE 6521FR UNITS. THE MODELS LISTED HERE ARE AVAILABLE SEPARATELY OR AS PART OF PRODUCT BUNDLES.



1435 KLEPPPE LANE  
SPARKS, NEVADA 89431  
(775) 359-4712 FAX (755) 359-7424  
E-MAIL: HAWS@HAWS.CO.COM  
WEBSITE: WWW.HAWS.CO.COM

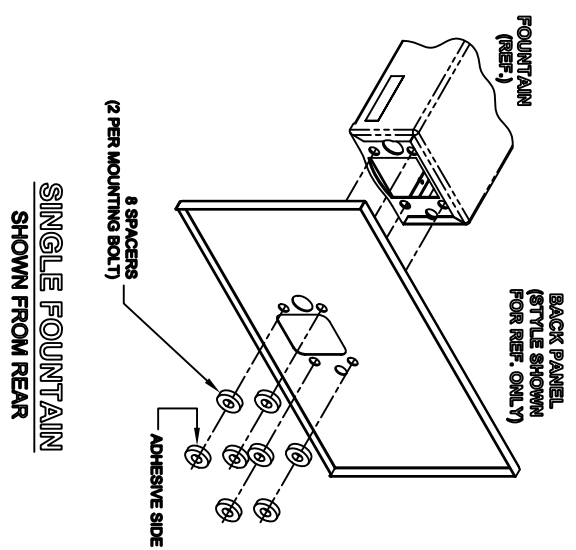
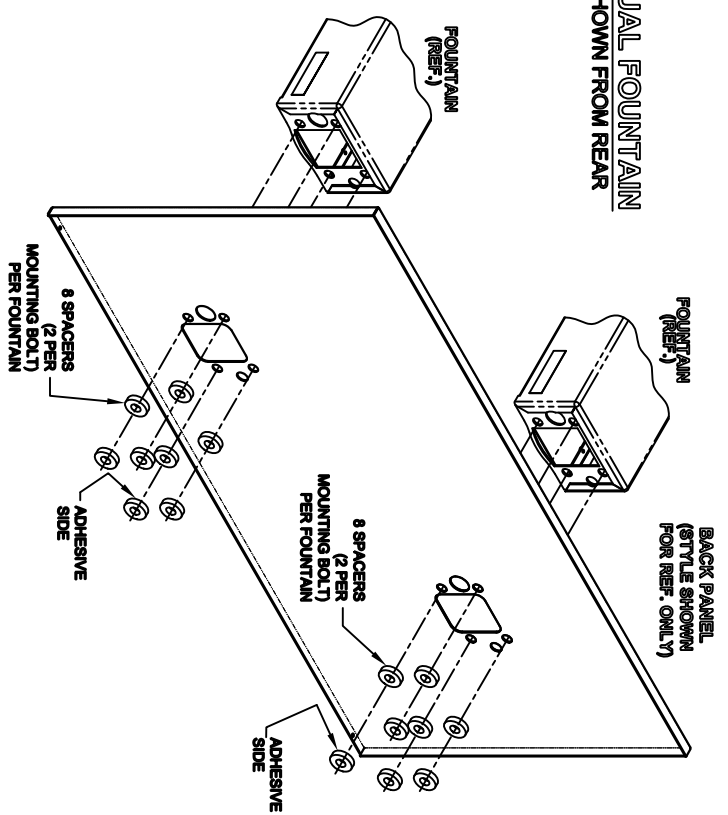
ECN NO	REVISED PER REV.	DATE	CHK'D.	DATE
0992	0992	0992	0992	0992

SCALE: 1:5 DRAWING TYPE: INSTALLATION SIZE: A SHEET 1 OF 1

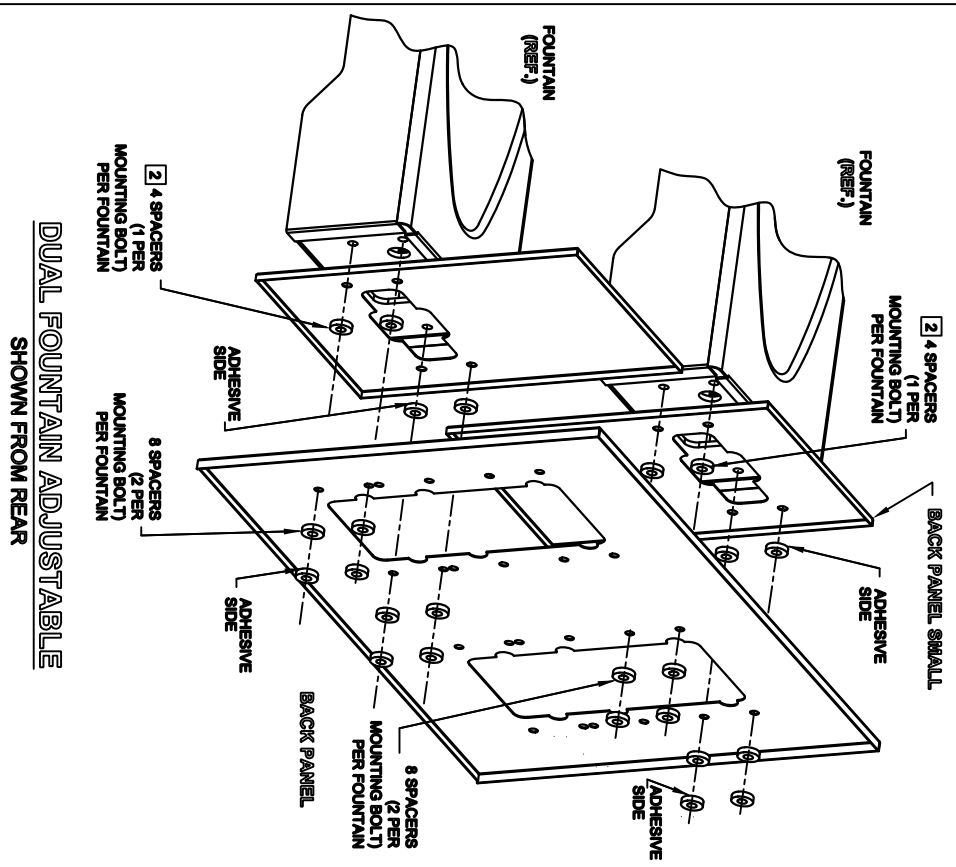
MODEL(S)	6521FR
PART NUMBER	0002077820 D
DRAWING NO.	09306A00
REV	18

THIS DOCUMENT IS TRUE AND CORRECT AT TIME OF PUBLICATION. CONTAINED PRODUCT IMPROVEMENTS HAVE SPECIFICATIONS AND MEASUREMENTS SUBJECT TO CHANGE WITHOUT NOTICE.

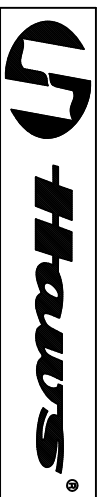
**DUAL FOUNTAIN**  
SHOWN FROM REAR



- NOTES:**
- 1 ON ALL BACK PANEL MODELS, SPACERS ARE NOT USED WHEN A MOUNTING FRAME IS USED EXCEPT AS SPECIFIED IN NOTE 2
  - 2 INDICATED SPACERS ARE USED WITH MOUNTING FRAME (DUAL ADJUSTABLE)

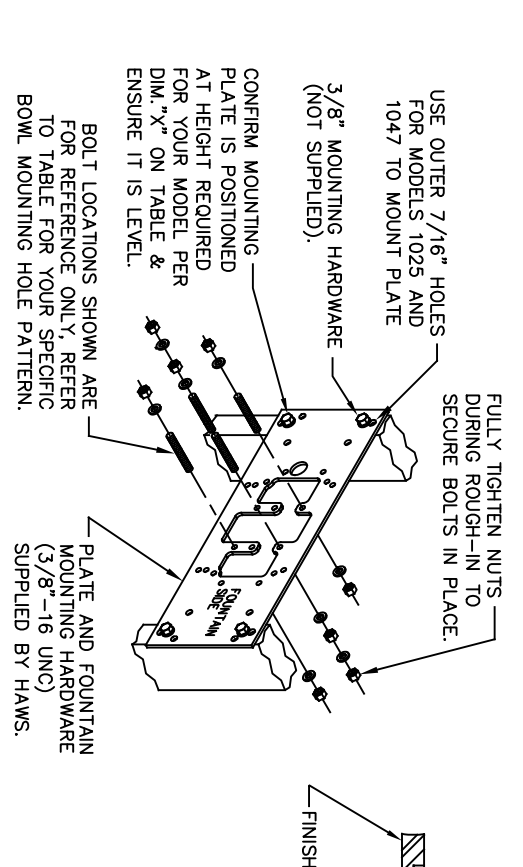
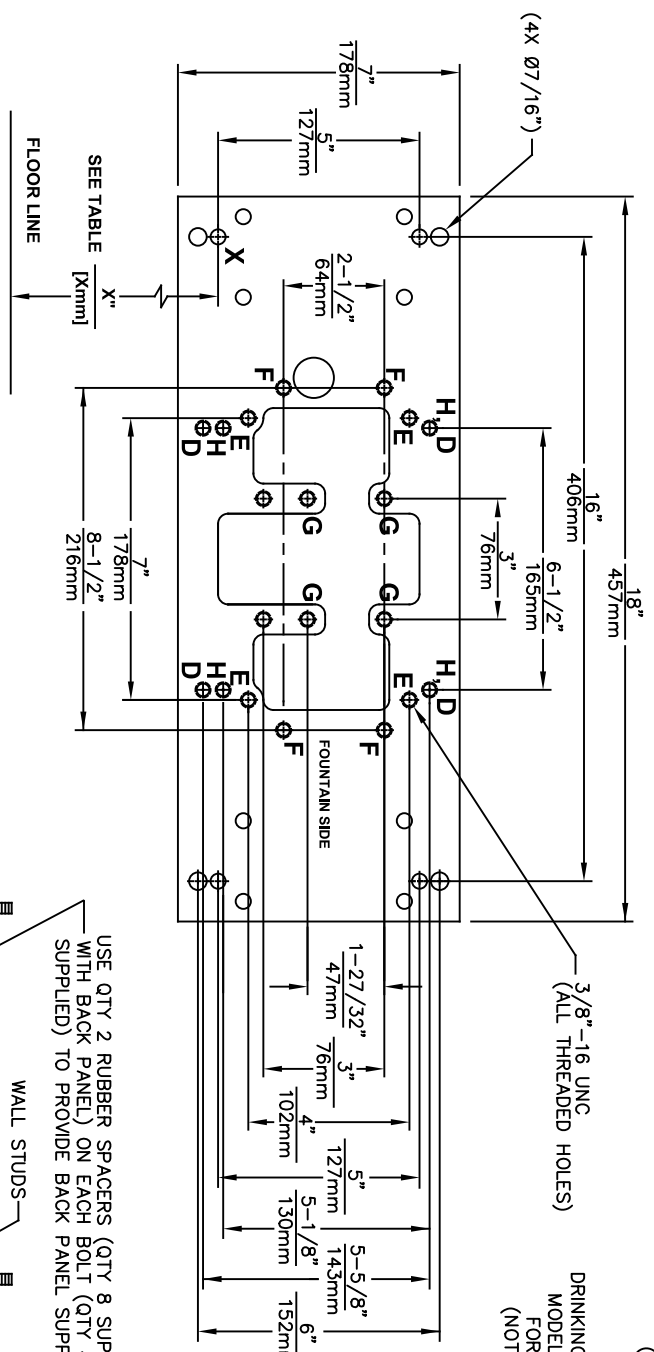


**DUAL FOUNTAIN ADJUSTABLE**  
SHOWN FROM REAR



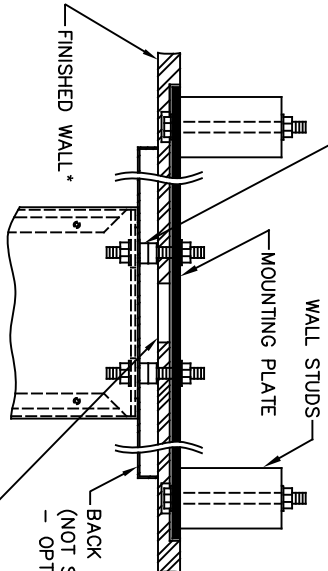
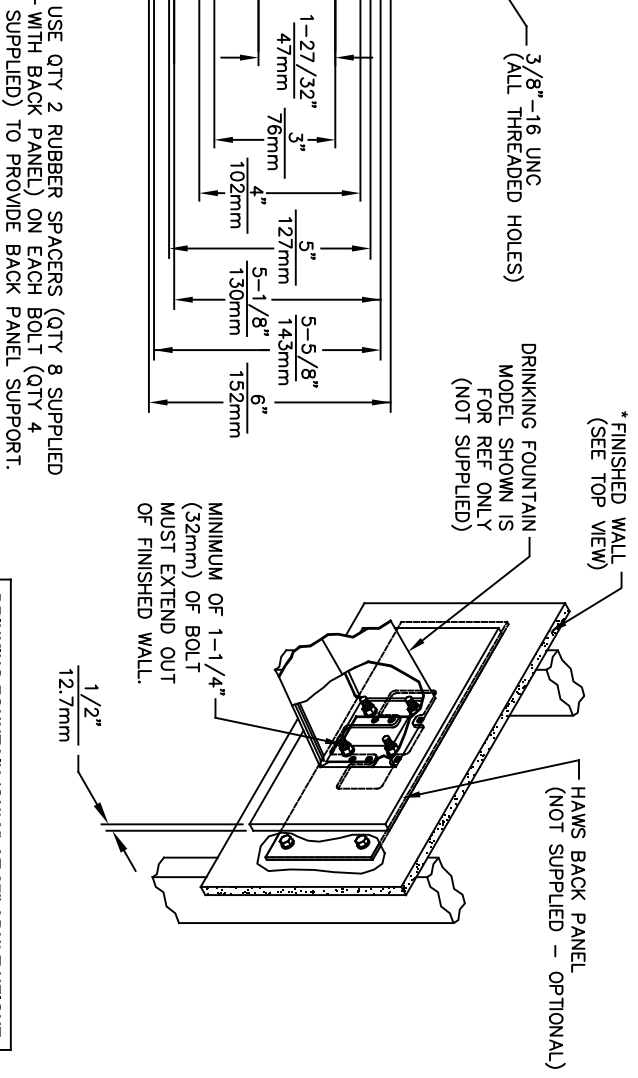
1465 KLEPPE LANE  
SPARKS, NEVADA, 89431  
(775) 399-4712 FAX (759) 399-1424  
E-MAIL: HAWS@HAWS.CO.COM  
WEBSITE: WWW.HAWS.CO.COM

ECN NO. REVISED PER BY:	MODEL(S)	BACK PANEL
DRAWN: [ ]	DATE: [ ]	SPACER INSTRUCTIONS
CHKD: [ ]	DATE: [ ]	INSTALLATION
APPROVED: [ ]	DATE: [ ]	SIZE: A
	SCALE: 1:10	DRAWING TYPE:
		SHEET: 1 OF 1
PART NUMBER:	0002082219	REV: 5



**CAUTION**

REGARDING CONCRETE/MASONRY WALL MOUNTING: DO NOT SECURE MOUNTING PLATE TO SAME SIDE OF WALL AS FOUNTAIN. AVOID COMPROMISING INTEGRITY OF WALL WHEN ANCHORING FOUNTAIN. IT IS RECOMMENDED THAT INSTALLER CALL TECHNICAL SUPPORT IF THERE ARE ANY QUESTIONS AS TO HOW TO OBTAIN A PROPER ANCHOR IN CONCRETE/MASONRY WALLS. 1-800-766-5612



**TOP VIEW**

6700 MOUNTING PLATE  
 FOR USE WITH  
 DRINKING FOUNTAINS  
 AND WASTE DRIP TRAYS  
 AT 27" ADULT HEIGHT  
 (SEE SHEETS 2 - 5 FOR USE WITH  
 BOTTLE FILLER 1920/1920HO SERIES  
 AND CHILD HEIGHT APPLICATIONS)

MODEL	USE BOWL MTG. HOLE PATTERN	USE "X" DIM. BELOW TO POSITION MOUNTING PLATE HOLE "X"
1001	"G"	25-3/8" [645mm]
1025	"D"	28-1/8" [714mm]
1047	"E"	24-3/8" [619mm]
1105	"H"	34-5/16" [872mm]
1107L	"F"	26-3/16" [665mm]
1109	"H"	27-5/16" [694mm]
1109.14	"H"	27-5/16" [694mm]
1109FR	"H"	27-5/16" [694mm]
1311	"E"	26-3/4" [679mm]

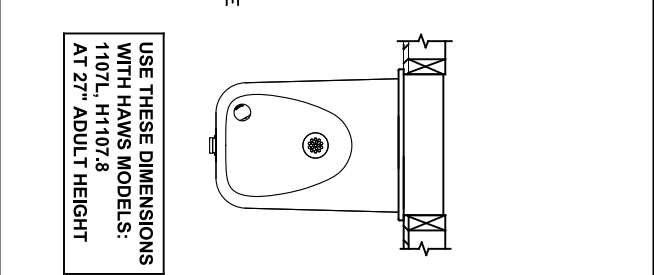
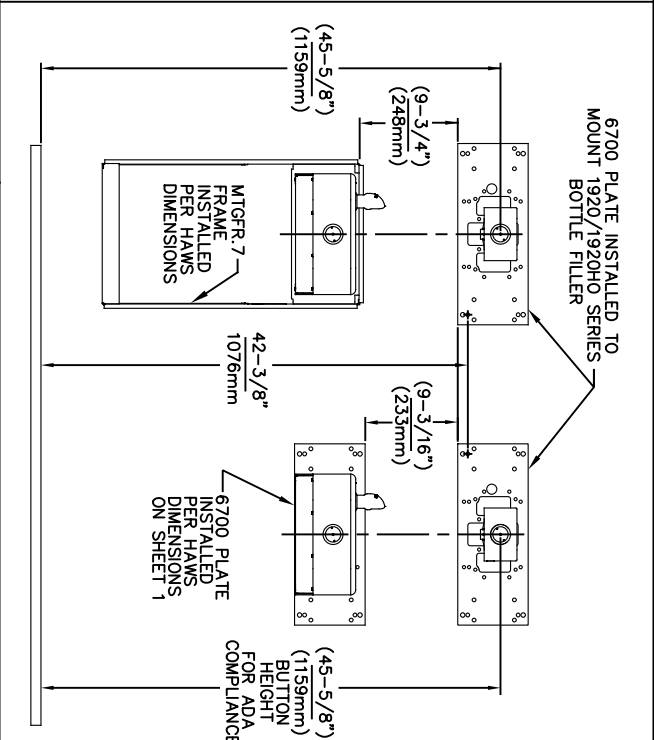
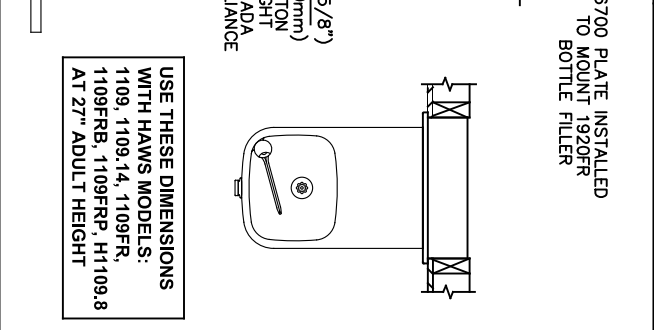
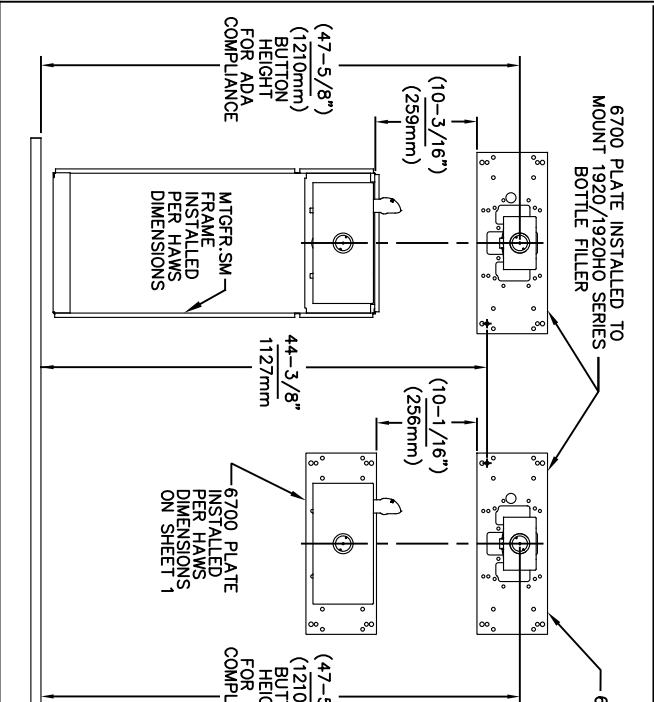
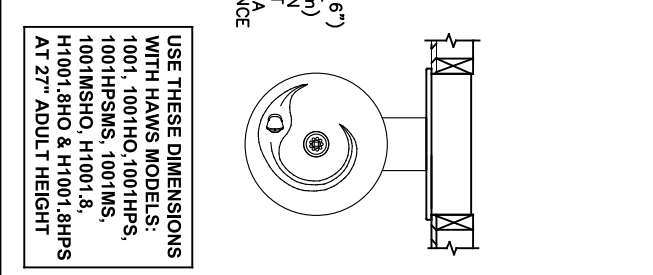
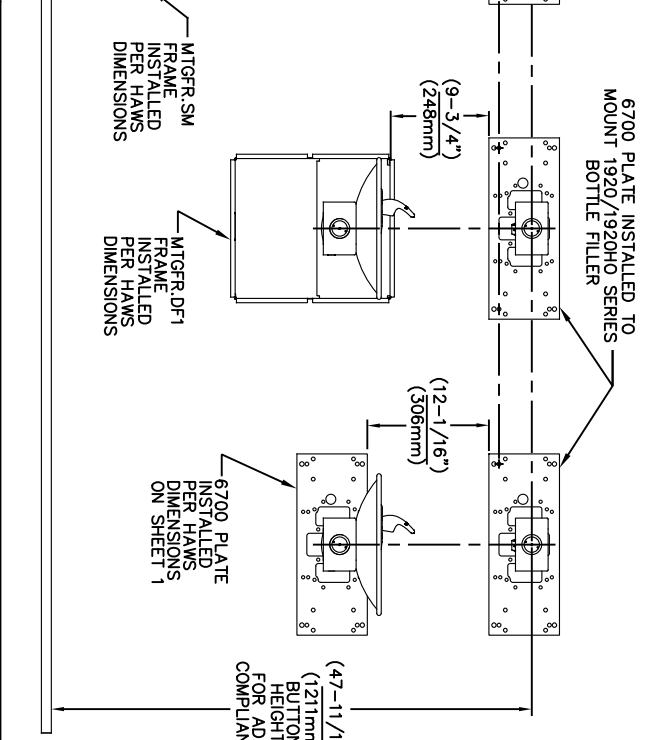
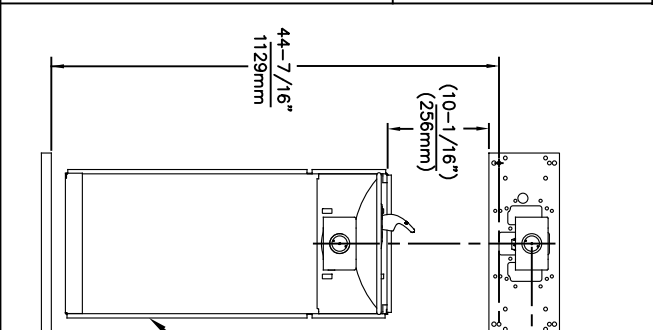
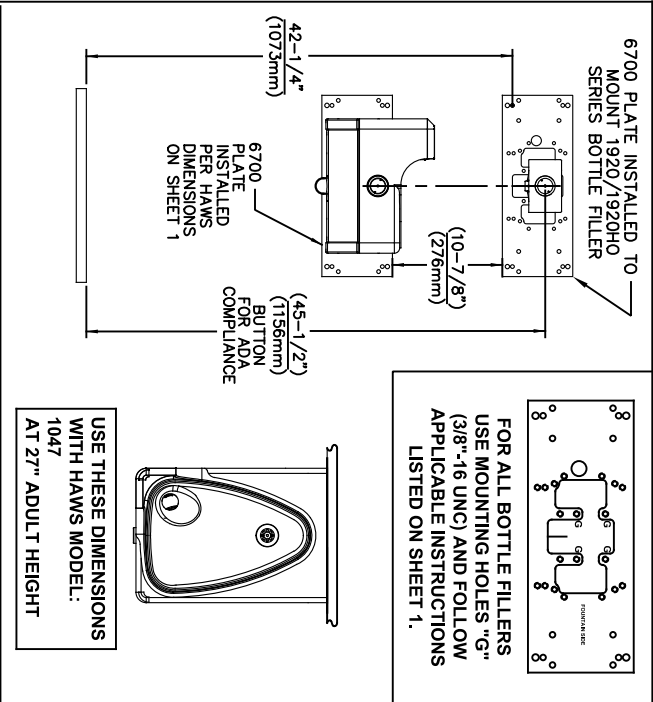
WASTE DRIP TRAY (ONLY) AT 27" ADULT HEIGHT	PART NUMBER
"G"	6468
"G"	1922

\*FINISH WALL OVER MOUNTING PLATE AND BEHIND BACK PANEL. MAKE SURE THAT FINISHED WALL EXTENDS WITHIN THE BRACKET/BOWL MOUNTING HOLES (TO PROVIDE SURFACE AREA FOR RUBBER SPACERS TO CONTACT).

1455 KLEPPE LANE  
 SPARKS, NEVADA 89431  
 (775) 369-4712 FAX (775) 359-7424  
 E-MAIL: HAWWS@HAWSCO.COM  
 WEBSITE: WWW.HAWSCO.COM

ECN NO. REVISED PER BY:	MODEL(S)
ECN. 6005	6700
DATE: 09/20/23	SCALE: N/A
CHK'D: KM	DRAWING TYPE: INSTALLATION
APPROVED: FV	DATE: 02/26/24
SCALE: N/A	SIZE: A
DATE: 02/26/24	SHEET: 1 OF 5





NOTES:  
 1. WHEN INSTALLING THIS UNIT, LOCAL, STATE OR FEDERAL CODES SHOULD BE ADHERED TO.  
 2. BACK PANELS (OPTIONAL) NOT SHOWN FOR CLARITY.

6700 MOUNTING PLATE  
 FOR USE WITH BOTTLE FILLER  
 (SEE SHEET 1 FOR USE WITH  
 DRINKING FOUNTAINS)

1455 KLEPPE LANE  
 SPARKS, NEVADA 89431  
 (775) 359-4712 FAX (775) 359-7424  
 E-MAIL: HAWS@HAWS.CO.COM  
 WEBSITE: WWW.HAWS.CO.COM

ECN NO. REVISED PER: MODEL(S)  
 ECN 6005  
 DRAWN: DATE: CHK'D:  
 MU 02/09/17 KM  
 APPROVED: DATE: SCALE: N/A DRAWING TYPE: INSTALLATION  
 PART NUMBER: 6700  
 REVISION: 24