

FEATURES & BENEFITS

CONSTRUCTION

Rugged ADA accessible 18-gauge Type 304 Stainless Steel with a satin finish bowl, 14 gauge Type 304 Stainless Steel bottle filler that resists stains and corrosion, soft rounded corners, stainless steel satin finish back panels, vandal resistant bottom plate, and 1-1/4" integral trap.

BOTTLE FILLER

Vandal-resistant, 14-gauge Type 304 stainless steel bottle filler housing with push button operation and 1 gpm (3.78 L) laminar flow.

VANDAL RESISTANT

The bubbler head, push buttons, drain strainer and bottom plates are locked in place, discouraging unwanted vandal tampering.

BUBBLER HEAD

Polished chrome-plated brass bubbler head with integral 11/16" dia. basin shank and stainless anti-rotation roll pin for vandal resistance strength. Shielded, angled stream opening provides a steady, sanitary source of drinking water at .45 gpm.

FOUNTAIN VALVES

The push-button activated valves have all stainless steel bodies, with chrome plated brass push button assemblies which allow for front access to water stream adjustment, water control cartridge, and water supply strainer replacement without having to go through the bottom plate. Operating pressure range of 30 to 90 psi (2.1 to 6.2 bar).

INTEGRATED TRAP

Brass 1-1/4" NPT trap is internally mounted for easy installation and access.



SPECIFICATIONS

Model 1109PCH wall mounted vandal-resistant ADA child height drinking fountain and bottle filler shall include an 18 gauge Type 304 Stainless Steel satin finish basin, 14 gauge bottle filler bracket, in-wall 3/16" thick steel mounting plates for the fountain and bottle filler, vandal-resistant push-button operated stainless steel valves with front accessible cartridge and flow adjustment, 100% lead-free waterways, polished chrome-plated brass vandal-resistant bubbler head with integral laminar anti-squirt flow, 1 gpm (3.78 L) laminar flow bottle filler, polished chrome-plated brass vandal-resistant waste strainer, vandal-resistant bottom plates, stainless steel satin finish back panels, and a 1-1/4" NPT trap. Unit is mounted to meet Child ADA specifications.

OPTIONS

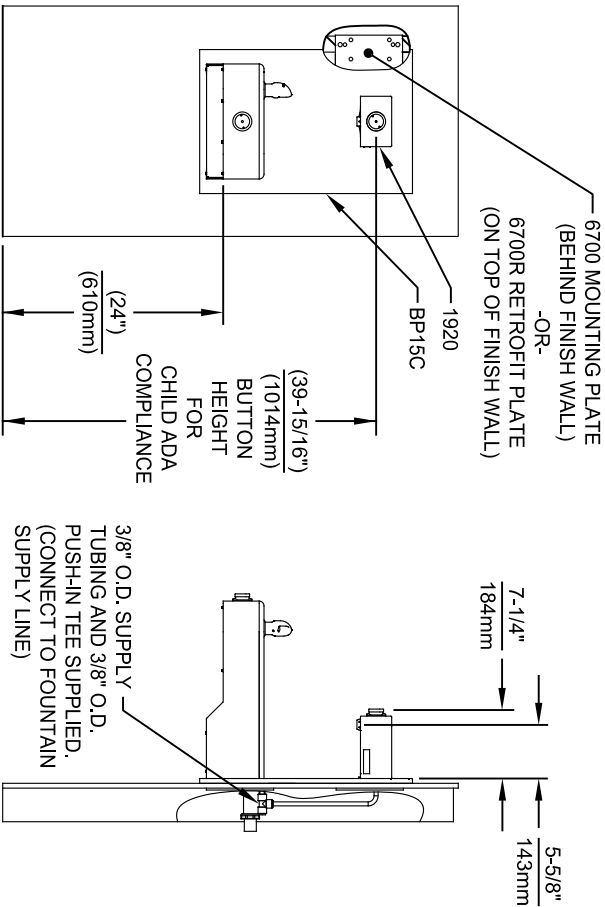
- Support Frame: Model 6810 In-wall floor mounted fixture support legs, welded steel 4-bolt floor flanges, and supplied with 'U' bolts and hardware.
- Water Filter: Model 6480 filter kit with 3000 gallon carbon block filter, filter head, and mounting bracket.

For more information, visit www.hawsco.com or call (888) 640-4297.

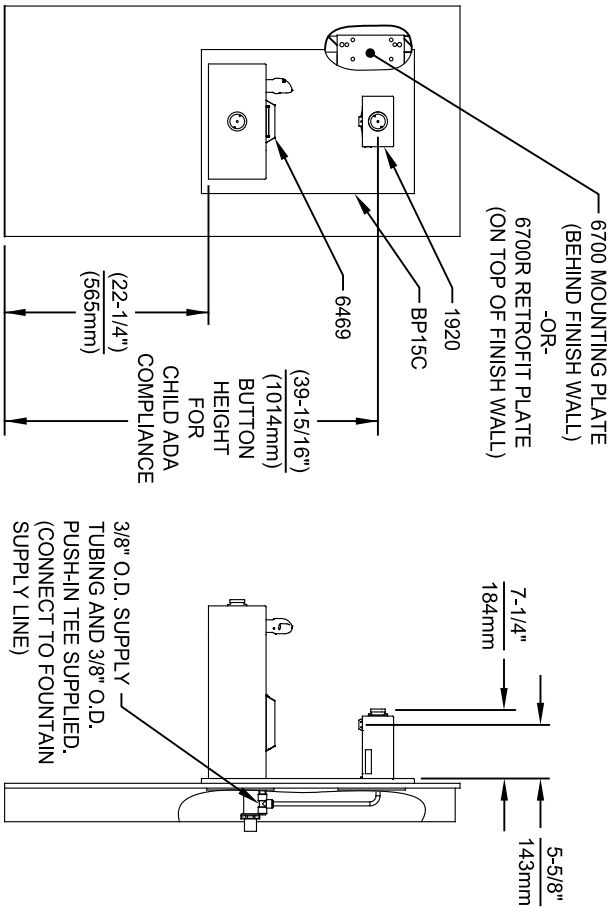
APPLICATIONS

Perfect for either public or private indoor/outdoor settings, the 1109PCH is a great fit in areas where aesthetics are important to the overall appeal of the architecture. Beautiful satin finish helps to maintain the fountains overall appeal. Specifically, this type of wall mounted drinking fountain may be placed in settings such as: schools and other locations in and around office buildings where the temperature remains above freezing. Model meets all current Federal Regulations for the disabled including those in the Americans with Disabilities Act. Haws manufactures drinking fountains, faucets and electric water coolers to be lead-free by all known definitions including NSF/ANSI/CAN 61-Section 9, NSF/ANSI/CAN 372, California Proposition 65, and the Federal Safe Drinking Water Act. Product is compliant to California Health and Safety Code 116875 (AB 1953-2006), and 116876 (AB 100) "NSF/ANSI/CAN 61: Q ≤ 1".

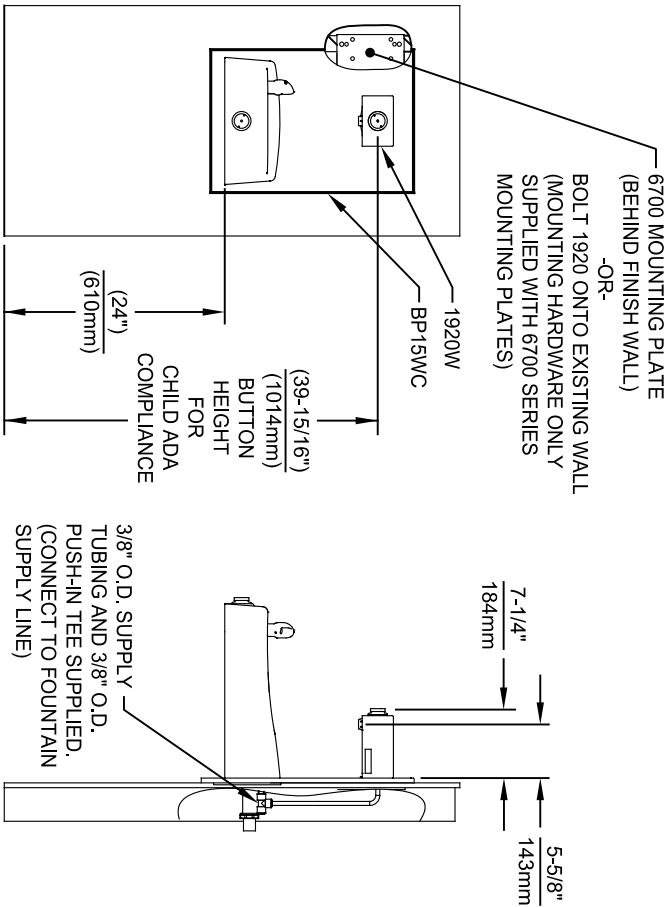




INSTALLATION ABOVE HAWS 1107L & H1107.8 SERIES



INSTALLATION ABOVE HAWS 1109, 1109.14 & H1109.8 SERIES



INSTALLATION ABOVE HAWS 1311

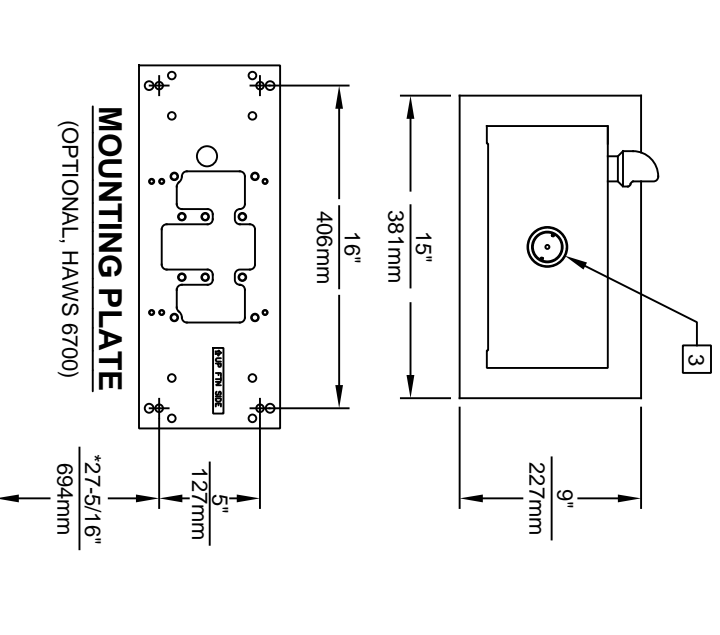
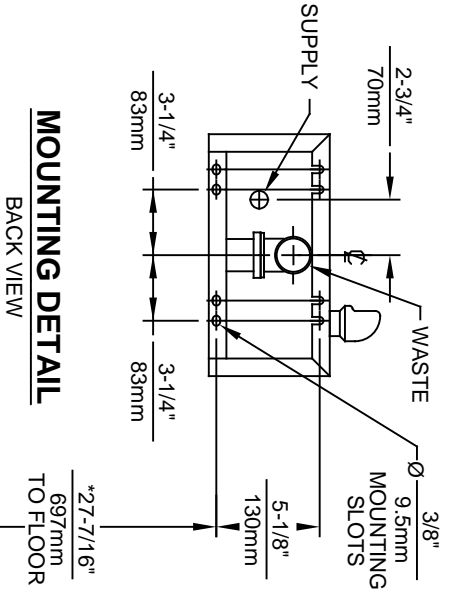
- NOTES:
- HEIGHT DIMENSIONS SHOWN ARE FOR CHILD ADA APPLICATIONS:
 - BOTTLE FILLER HEIGHT AT 40" MAX.
 - DRINKING FOUNTAIN BUBBLER HEIGHT AT 30" MAX.
 - (SEE SHEETS 3, 4 & 5 FOR ADULT ADA HEIGHT DIMENSIONS)
 - SEE SEPARATE INSTALLATION DRAWINGS FOR MOUNTING PLATES AND BACK PANELS (SHOWN FOR REFERENCE - NOT SUPPLIED).
 - WHEN INSTALLING THIS UNIT, LOCAL, STATE OR FEDERAL CODES SHOULD BE ADHERED TO FOR INSTALLATION LOCATIONS, WASTE & SUPPLY REQUIREMENTS OTHER THAN SHOWN.



Haws
Since 1906

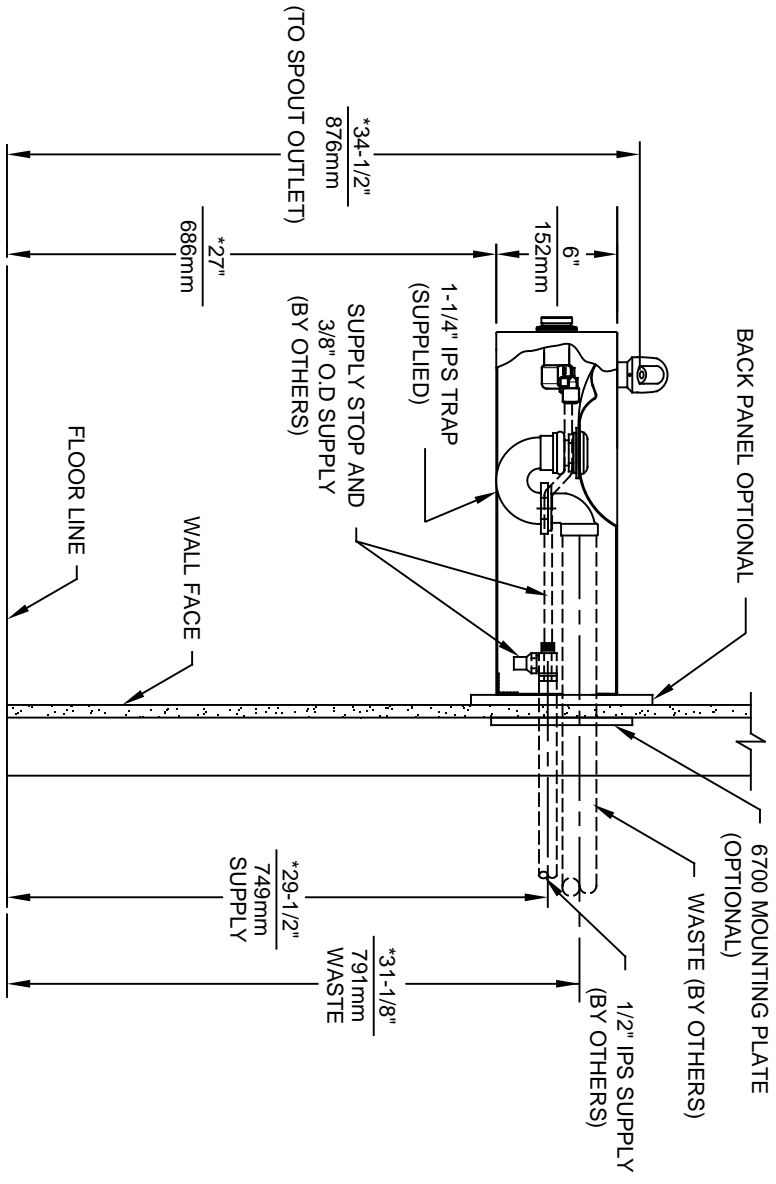
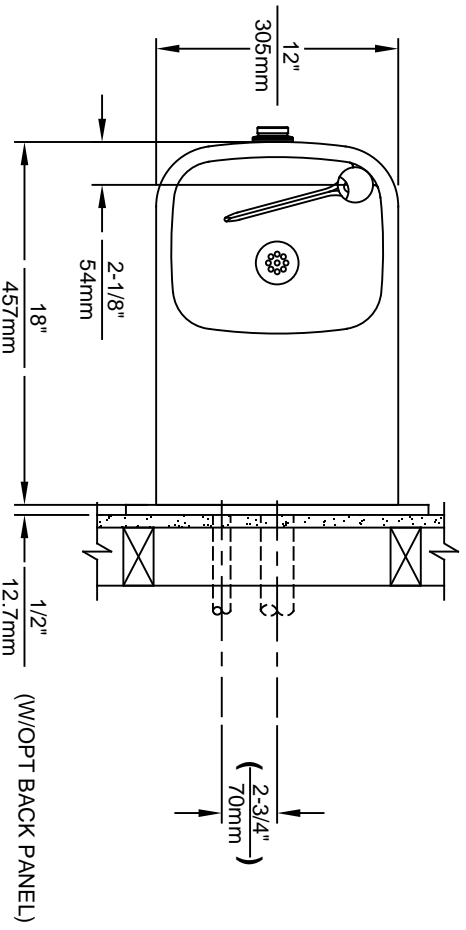
1455 KLEPPLE LANE
SPARKS, NEVADA 89431
(775) 359-4712 FAX (775) 359-1424
E-MAIL: HAWS@HAWS.CO.COM
WEBSITE: WWW.HAWS.CO.COM


ECON. REVISED PERBY:		MODEL(S)	
9807	ECON. 9972	1920/1920HPS/1920W	
DRAWN:	DATE:	CHKD:	
FV	01/26/24	JC	
APPROVED:	DATE:	SCALE:	DRAWING TYPE:
FV	04/19/24	N/A	INSTALLATION
SIZE: A1		SHEET 8 OF 8	
PART NUMBER		REVISION	
0510000490.D		12	



NOTES:

1. HOLD ROUGH-IN DIMENSIONS $\pm 1/4"$ (6.4mm).
2. WHEN INSTALLING THIS UNIT LOCAL, STATE OR FEDERAL CODES SHOULD BE ADHERED TO. FOR INSTALLATION HEIGHTS OTHER THAN SHOWN, DIMENSIONS MARKED (*) MUST BE ADJUSTED ACCORDINGLY.
- 3 REFER TO 5874 SERIES/VRK5874 OPERATION AND MAINTENANCE MANUAL FOR PUSH BUTTON AND VALVE INSTALLATION/MAINTENANCE INSTRUCTIONS.



**Haws**[®]

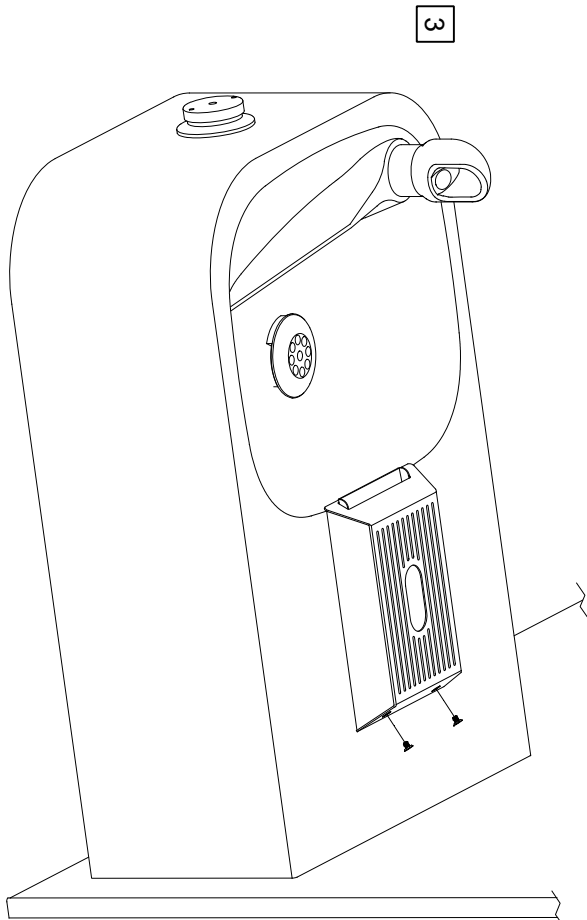
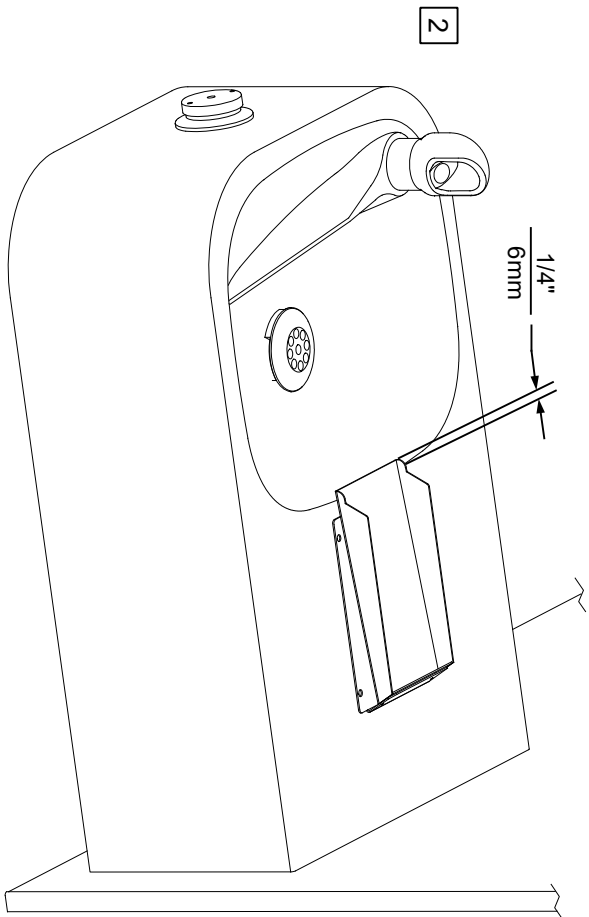
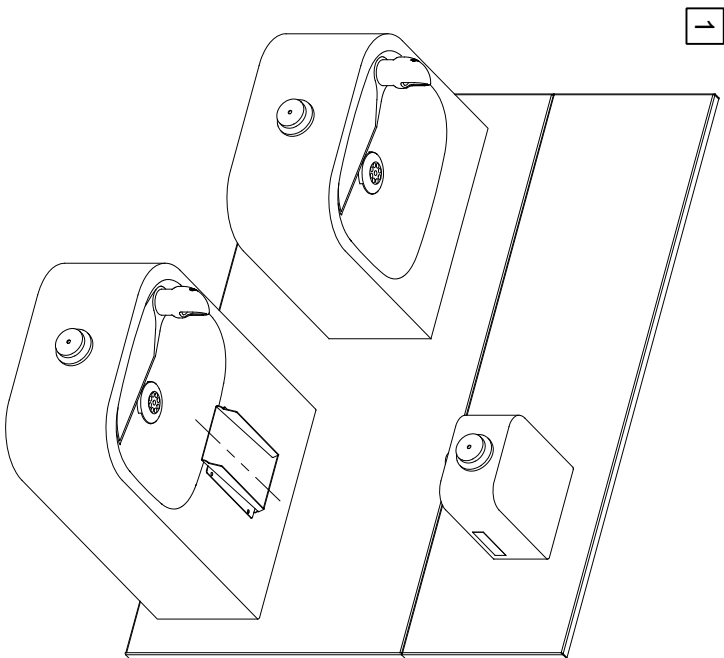
1456 KLEPPE LANE
SPARKS, NEVADA 89431
(775) 359-4712 FAX (775) 359-7424
E-MAIL: HAWS@HAWS.CO.COM
WEBSITE: WWW.HAWS.CO.COM


ECN NO. REVISED PER BY: MODEL(S) 1109
ECN: 5215 JP
DATE: CHKD: 1109
F VASQUEZ 03/96 GC
APPROVED: DATE: 11/22/17 SCALE: NA DRAWING TYPE: INSTALLATION SIZE: A SHEET 1 OF 1

PART NUMBER 0002076620.D
REVISION: 20

6469 STRAINER DRIP TRAY INSTALLATION

- 1 THE 6469 STRAINER DRIP TRAY ALLOWS THE INSTALLATION OF THE 1920 SERIES BOTTLE FILLER OVER HAWS 1109/1119 SERIES MODEL DRINKING FOUNTAINS. CENTER THE LOWER DRAIN PAN ALONG THE CENTERLINE OF THE FOUNTAIN.
- 2 EXTEND THE FRONT EDGE OF THE LOWER DRAIN PAN OVER THE EDGE OF THE FOUNTAIN BOWL BY APPROXIMATELY 1/4" (6mm). IT IS RECOMMENDED TO TEMPORARILY TAPE THE DRAIN PAN IN PLACE, INSTALL THE TOP COVER, AND ACTIVATE THE BOTTLE FILLER TO VERIFY THE WATER STREAM IS ALIGNED TO THE INLET HOLE. VERIFY THE LIP OF THE TOP COVER HANGS OVER THE EDGE OF THE FOUNTAIN BOWL.
- 3 MARK THE DRAIN PAN HOLE LOCATIONS ON THE FOUNTAIN. THE DRAIN PAN CAN NOW BE PERMANENTLY INSTALLED USING AN APPROPRIATE FASTENING METHOD (FASTENERS NOT SUPPLIED). FASTENING OPTIONS INCLUDE THRU BOLTS, RIVETS, TACK WELDS, AND DOUBLE-SIDED FOAM TAPE. INSTALL THE TOP COVER AND SECURE TO THE DRAIN PAN WITH THE SUPPLIED 4-40 FLAT HEAD SCREWS (QTY. 2).



 Haws®		MODEL(S)		6469	
		PART NUMBER		0510000657.D	
1455 KLEPPE LANE SPARKS, NEVADA, 89431 (775) 359-4712 FAX (775) 359-7424 E-MAIL: HAWS@HAWS.CO.COM WEBSITE: WWW.HAWS.CO.COM		ECN NO. 5150 ECN 5799 DATE: 01/10/17 CHK'D: JS APPROVED: FV		REVISION 2	
SCALE: 1:4 DRAWING TYPE: INSTALLATION SIZE: A SHEET: 1 OF 1					