



# model 1117LHO

ADA Vandal-Resistant Motion-Activated/Push Button Dual Adjustable Fountain

## FEATURES & BENEFITS

### INTEGRATED TRAP

All cast brass 1-1/4" NPT adjustable traps completely concealed inside bottom plates for easy installation and lack of unwanted access.

### BARRIER-FREE CONFIGURABLE

Supplied with a low profile bowl, individual adjustable panels, and multiple mounting positions, this fountain can be configured for adult and child ADA considerations.

### BUBBLER HEADS

Polished chrome-plated brass bubbler heads with integral 11/16" dia. basin shank and stainless anti-rotation roll pin for vandal resistance strength. Shielded, angled stream opening provides a steady, sanitary source of drinking water at .45 gpm.

### DRINKING FOUNTAIN VALVES

Fountain incorporates a touchless sensor operated stainless steel solenoid valve controlled by a transformer on one side and a push-button activated valve which offers the only all stainless steel valve body that is machined out of solid bar stock and is fully serviceable through the front of the push button assembly offering access to the water control cartridge and integral water supply strainer on the other.

### VANDAL-RESISTANT

The bubbler heads, push button, drain strainers and bottom plates are locked in place, discouraging unwanted vandal tampering.

### CONSTRUCTION

One-piece drinking fountains with low-profile design made of 14 gauge Type 304 stainless steel with 1/4" (.6 cm) thick stainless back plates welded in, and vandal-resistant stainless bottom plates. Satin finish resists stains and corrosion.

### TAMPER RESISTANT

30-second obstruction time-out to reduce tampering of sensor.



## SPECIFICATIONS

Model 1117LHO low profile ADA vandal-resistant wall mounted combination motion-activated/push-button adjustable drinking fountain shall include dual 14-gauge Type 304 Stainless Steel satin finish basins with integral 1/4" (.6 cm) thick stainless-steel back plates, touchless sensor operated solenoid valve with 30-second obstruction time-out on one side, and vandal-resistant push-button operated stainless steel valve with front-accessible cartridge and flow adjustment on the other, 100% lead free waterways, polished chrome-plated brass vandal-resistant bubbler heads, polished chrome-plated brass vandal-resistant waste strainers, vandal-resistant bottom plates, stainless steel satin finish back panel, adjustable mounting allowing either basin high or low, in-wall mounting plate, and 1-1/4" NPT concealed all cast-brass traps. The patented design allows the unit to be mounted to meet ADA or Child ADA specifications.

**REQUIRES MODEL 6717 PRICED SEPARATELY.**

**FOR INDOOR USE ONLY**

## OPTIONS

Custom Logo Panel: Model 6475, Hydration By Haws™ logo panel with customization options.

Cane Detection, Floor Mounted: Model SK6, floor mounted cane detection for the Haws Hi-Lo drinking fountains.

Bottle Filler Stand: Model BTL1107, add-on stainless steel stand to place bottle on when 1920 bottle filler is used.

Bottle Filler: Model 1920HO, bottle filler can be a stand-alone station, or mounted above Haws 1001, 1011, 1107L, 1109, 1117L, and 1119 series drinking fountain models.

For more information, visit [www.hawsc.com](http://www.hawsc.com) or call (888) 640-4297.

## APPLICATIONS

Perfect for either public or private indoor settings, Model 1117LHO is a great fit in areas where aesthetics are important to the overall appeal of the architecture. Beautiful satin finish helps to maintain the fountains overall appeal. Specifically, this type of wall mounted drinking fountain may be placed in settings such as: schools and other locations in and around office buildings. Model meets all current Federal Regulations for the disabled including those in the Americans with Disabilities Act. Haws manufactures drinking fountains, faucets and electric water coolers to be lead-free by all known definitions including NSF/ANSI/CAN 61- Section 9, NSF/ANSI/CAN 372, California Proposition 65, and the Federal Safe Drinking Water Act. Product is compliant to California Health and Safety Code 116875 (AB 1953-2006), and NSF/ANSI/CAN 61: Q ≤ 1.



NOTES:

1. HOLD ROUGH-IN DIMENSIONS  $\pm 1/8"$  (3.2MM).
2. WHEN INSTALLING THIS UNIT, LOCAL, STATE, OR FEDERAL CODES SHOULD BE ADHERED TO. FOR INSTALLATION HEIGHTS OTHER THAN SHOWN, DIMENSIONS MARKED (\*) MUST BE ADJUSTED ACCORDINGLY.
3. REFER TO 6874 SERIES OPERATION AND MAINTENANCE MANUAL FOR PUSH BUTTON AND VALVE INSTALLATION/MAINTENANCE INSTRUCTIONS.
4. ROUGH IN DIMENSIONS FOR FOUNTAIN HEIGHTS:

CHILD WHEELCHAIR HEIGHT: SEE SHT 3 FIG 1

- WASTE: 26-1/4" (667mm)
- SUPPLY: 26-1/8" (664mm)
- MOUNTING HOLE: 24-13/16" (630mm)
- FOUNTAIN: 24" (610mm)
- BUBBLER: 29-7/8" (759mm)

ADULT WHEELCHAIR HEIGHT: SEE SHT 3 FIG 2

- WASTE: 29-1/4" (743mm)
- SUPPLY: 29-1/8" (740mm)
- MOUNTING HOLE: 27-13/16" (709mm)
- FOUNTAIN: 27" (686mm)
- BUBBLER: 32-7/8" (832mm)

STANDING ADULT HEIGHT: SEE SHT 3 FIG 3

- WASTE: 34-3/4" (883mm)
- SUPPLY: 34-3/8" (879mm)
- MOUNTING HOLE: 33-5/16" (846mm)
- FOUNTAIN: 32-1/5" (826mm)
- BUBBLER: 38-3/8" (972mm)

5. REFER TO MODEL 1117LHO INSTALLATION DRAWING SHEET 3 OF 3 (ON HAWS WEBSITE [WWW.HAWS.CO.COM](http://WWW.HAWS.CO.COM)) FOR PERMISSIBLE BOWL MOUNTING PATTERNS. TWO WHEELCHAIR HEIGHT FOUNTAINS CANNOT BE MOUNTED SIDE BY SIDE PER ANSI A117.1.

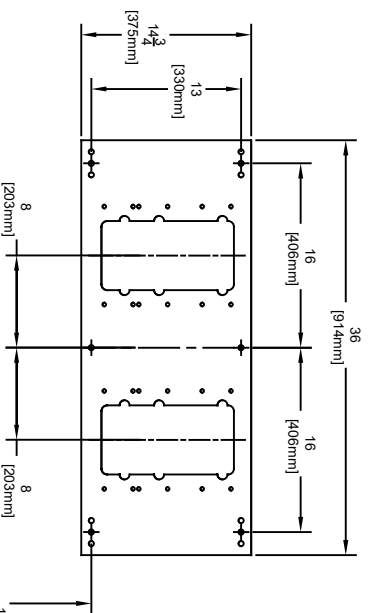
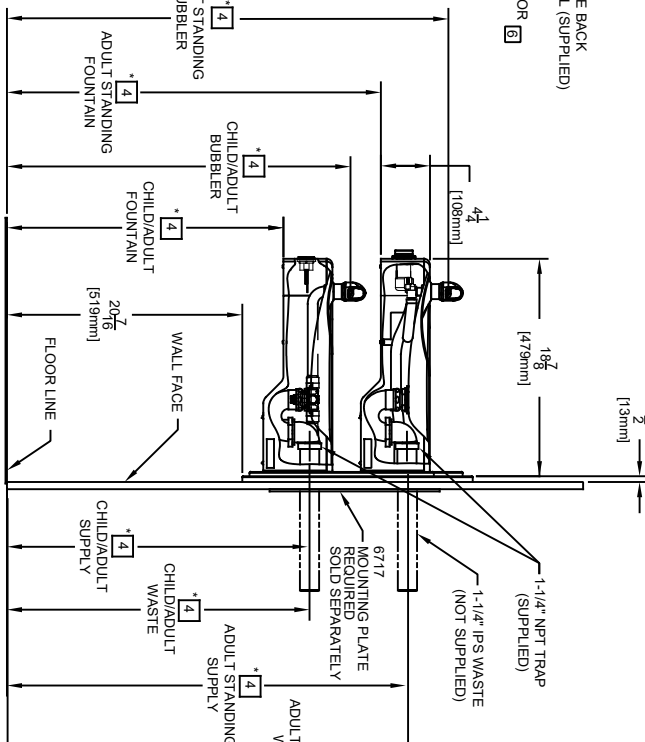
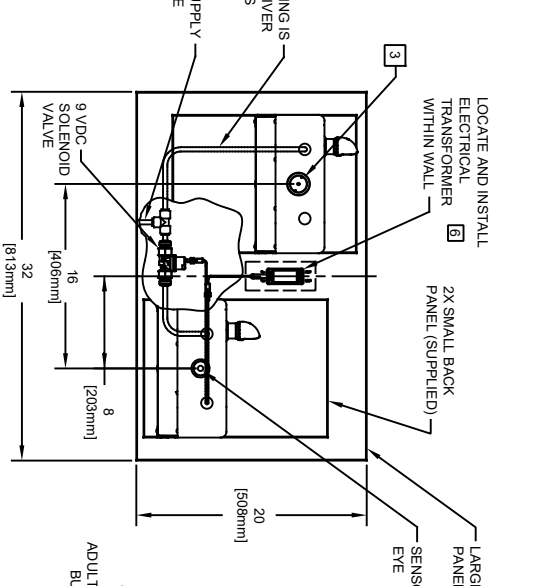
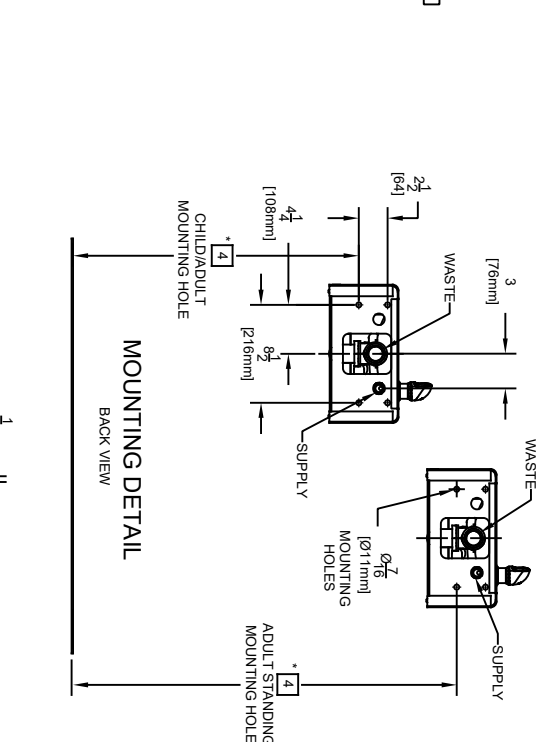
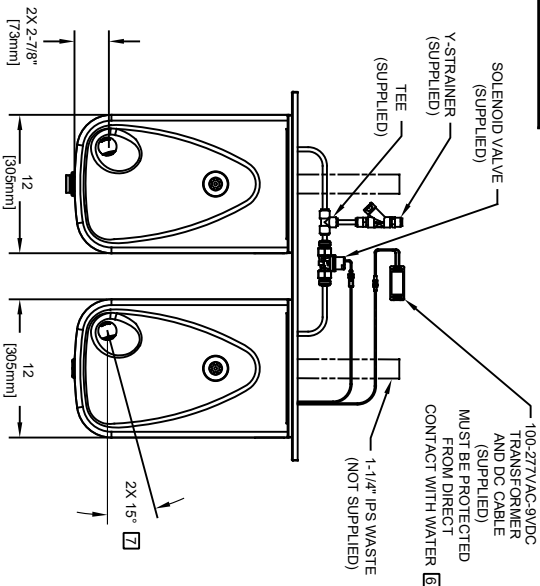
6. REFER TO 1RKH0 OR 2RKH0 SERIES OPERATION INSTRUCTIONS FOR TRANSFORMER AND SENSOR SETUP.

7. MAXIMUM ADJUSTABLE RANGE IS 15" FROM PARALLEL TO BACK WALL.

NOTES CONTINUED ON SHEET 3 OF 3

3/8" O.D. SUPPLY TUBING IS SUPPLIED. SCREWDRIVER STOP (NOT SHOWN) IS NOT SUPPLIED.

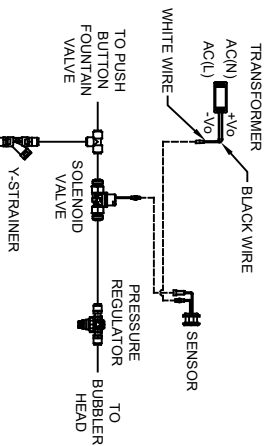
3/8" O.D. SUPPLY LINE TO TEE



6717 MOUNTING PLATE

MUST BE INSTALLED BEFORE FINISH WORK  
THIS PLATE IS REQUIRED - SOLD SEPARATELY.

SENSOR WIRING / SUPPLY PLUMBING SCHEMATIC

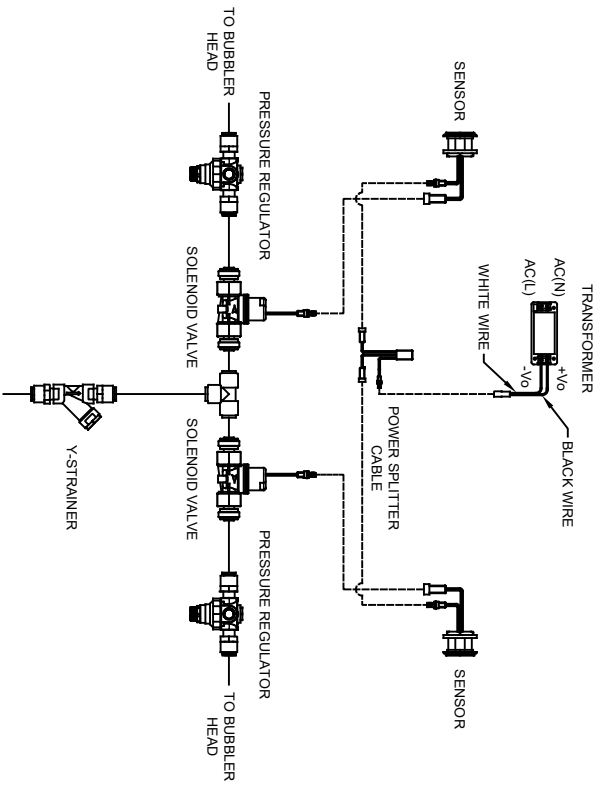
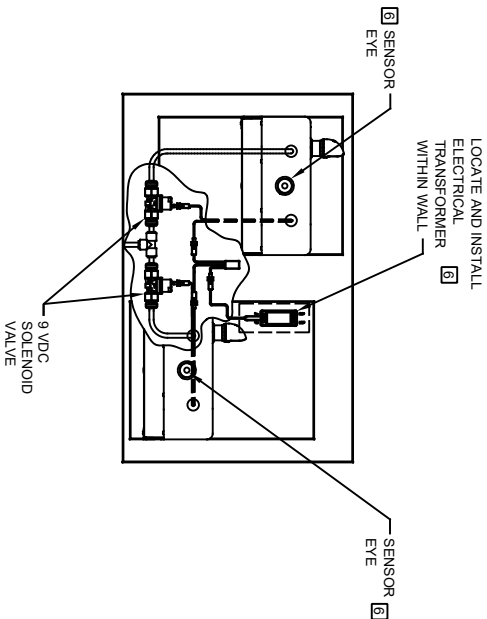
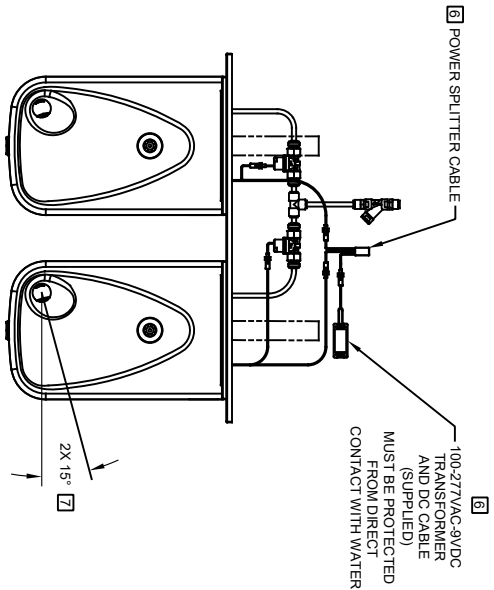


MODEL 1117LHO SHOWN  
MODEL 1117LHO2 ON SHEET 2  
(ROUGH-IN DIMENSIONS APPLY TO BOTH MODELS)

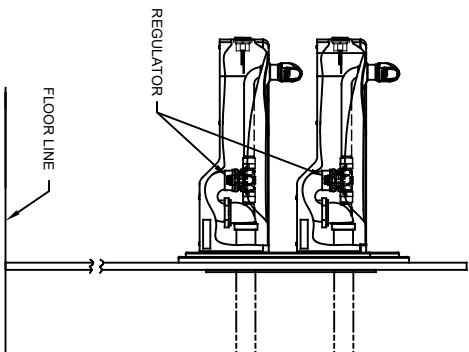


1456 KLEPPE LANE  
SPARKS, NEVADA 89431  
(775) 359-4712 FAX (775) 359-7424  
E-MAIL: [HAWS@HAWS.CO.COM](mailto:HAWS@HAWS.CO.COM)  
WEBSITE: [WWW.HAWS.CO.COM](http://WWW.HAWS.CO.COM)

ECN NO. REVISED PER BY:	MODEL(S)	1117LHO/1117LHO2
5712	ECN: 5712	
DATE: 07/21/21	CHKD:	
APPROVED: FV	DATE: 07/29/21	SCALE: 1:2
		DRAWING TYPE: INSTALLATION
		SIZE: A
		SHEET 1 OF 3
		PART NUMBER: 0510001209.D
		REVISION: 1



**SENSOR WIRING / SUPPLY PLUMBING SCHEMATIC**



MODEL 1117LHO2 SHOWN  
MODEL 1117LHO ON SHEET 1  
(SEE SHEET 1 FOR APPLICABLE ROUGH-IN DIMENSIONS)

		<b>MODEL(S)</b>	
1459 KLEPPE LANE SPARKS, NEVADA, 89431 (775) 359-4712 FAX (775) 359-7424 E-MAIL: HAWS@HAWSCO.COM WEBSITE: WWW.HAWSCO.COM		1117LHO/1117LHO2	
ECN NO. REVISED PER BY:	ECN. 5712 FV	DATE:	07/21/21
DRAWN:	5712 FV	CHKD:	DP
APPROVED:	FV	DATE:	07/29/21
SCALE: 1/2		DRAWING TYPE: INSTALLATION	
SIZE: A		SHEET: 2 OF 3	
PART NUMBER		REVISION	
0510001209.D		1	

**NOTES:**

- 8 FIGURES 1 AND 2 ARE REVERSIBLE. CAN BE RIGHT OR LEFT SIDE HIGH.
- 9 USE SHADED HOLES TO MOUNT AT INDICATED POSITIONS BASED ON COMBINATION SELECTED (FIGS. 1 THRU 3).
- 10. REFER TO SHEET 1 OF 3, NOTE 4, FOR INSTALLED FOUNTAIN DIMENSIONS.

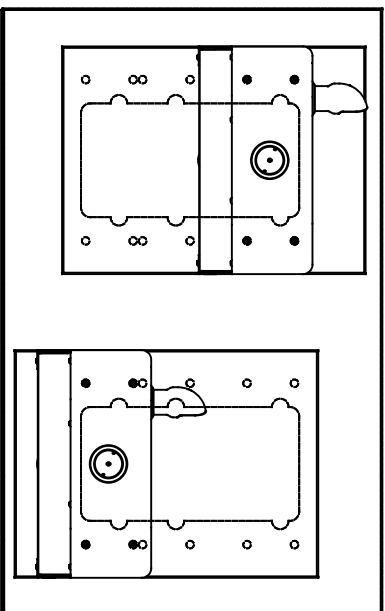


FIGURE 1.

ADULT STANDING/CHILD WHEELCHAIR

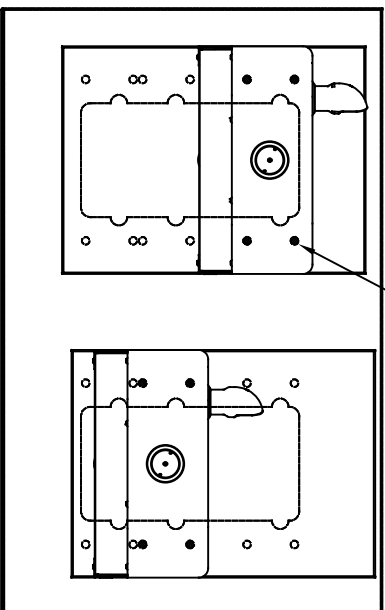


FIGURE 2.

ADULT STANDING/ADULT WHEELCHAIR

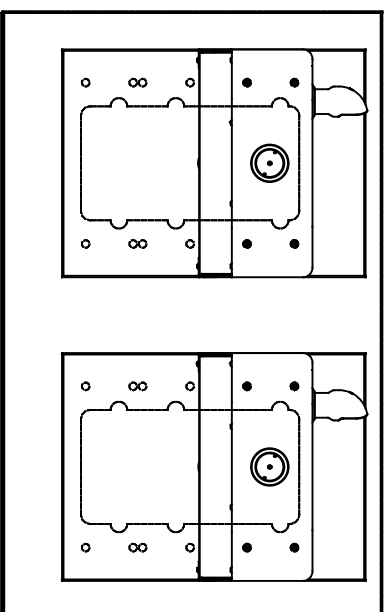


FIGURE 3.

ADULT STANDING/ADULT STANDING

# BOWL MOUNTING PATTERNS

		<b>Haws</b>	
1456 KLEPPE LANE SPARKS, NEVADA 89431 (775) 359-4712 FAX (775) 359-7424 E-MAIL: HAWS@HAWSCO.COM WEBSITE: WWW.HAWSCO.COM		MODEL(S) 1117LHO/1117LHO2	
ECN NO. REVISED PER BY:	5712 FV	DATE:	07/21/21
CHKD:	DP	DATE:	07/29/21
SCALE:	1:2	DRAWING TYPE:	INSTALLATION
SIZE:	A	SHEET:	3 OF 3
PART NUMBER	0510001209.D	REVISION:	1