



# model 1431

## Wall-Mounted Drinking Fountain

### FEATURES & BENEFITS

#### BUBBLER HEAD

Polished chrome-plated brass bubbler head features an integral basin shank for added strength, and is equipped with a shielded, anti-squirt orifice that provides a steady sanitary source of water.

#### INTEGRATED TRAP

Spacious fountain design allows for the trap to be internally mounted which allows for easy access, and aids and reduces the installation process.

#### CONSTRUCTION

Heavy-duty cast iron bowl with a glossy white enamel finish is designed for the toughest of applications, and at the same time is gentle to all users with its soft rounded corners. Unit also ships with vandal-resistant bottom plates to provide added peace of mind.

#### PUSH BUTTON

With its patented (Pat. # 6,981,692) stainless steel, push-button activated valve assembly which allows for front access stream adjustment as well as cartridge and strainer access, this fountain offers 100% lead free waterways. The valve works at an operating pressure range of 30 to 90 psi (2.1 to 6.2 bar).



### SPECIFICATIONS

Model 1431 wall mounted, wheel chair accessible drinking fountain shall include a white enameled-iron basin, push-button operated stainless steel valves with front-accessible cartridge and flow adjustment, 100% lead-free waterways, dual polished chrome-plated brass vandal-resistant bubbler heads, polished chrome-plated brass vandal-resistant waste strainer, vandal-resistant bottom plate, and chrome-plated 1-1/2" IPS trap.

### OPTIONS

- ❑ Filter: Model 6426, 12" x 2" (30.5 x 5.1 cm), in-line lead removal element that reduces lead from incoming water supply.
- ❑ Chiller: Model HCR8, 8 gph (30.3 L) remote water chiller provides instantaneous cooling to meet a continuous demand for chilled water.

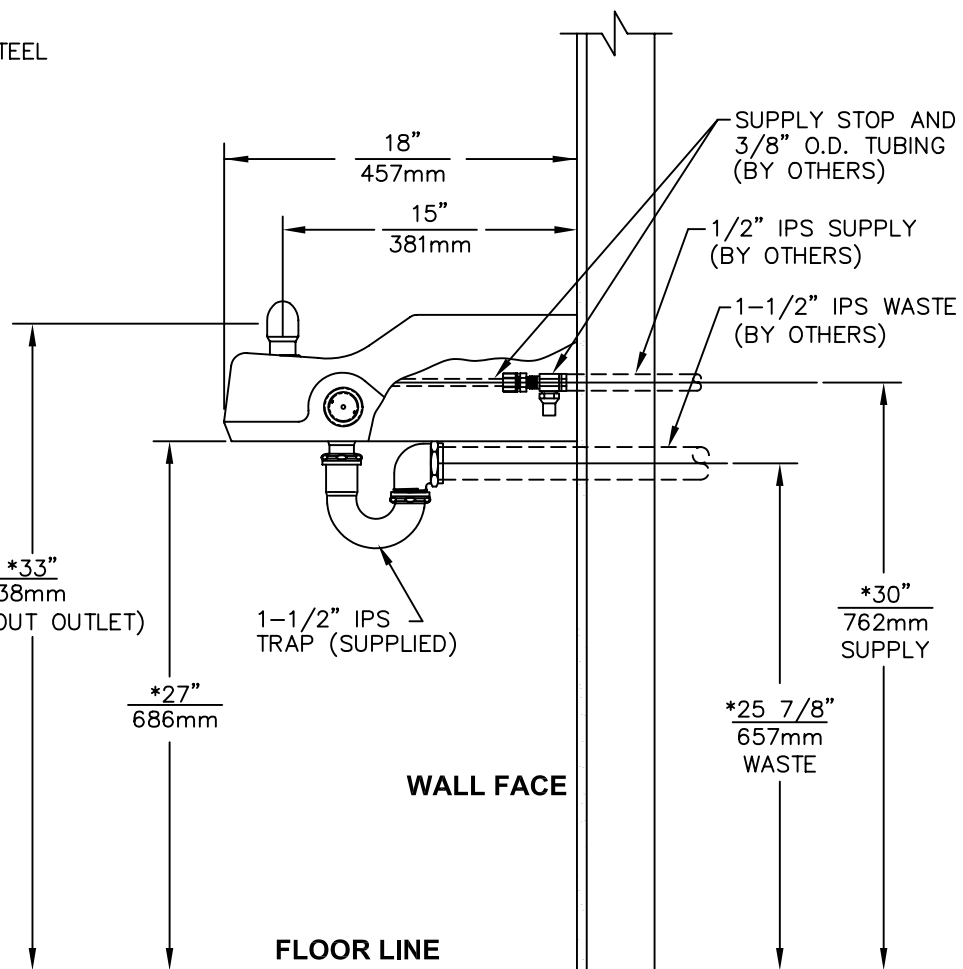
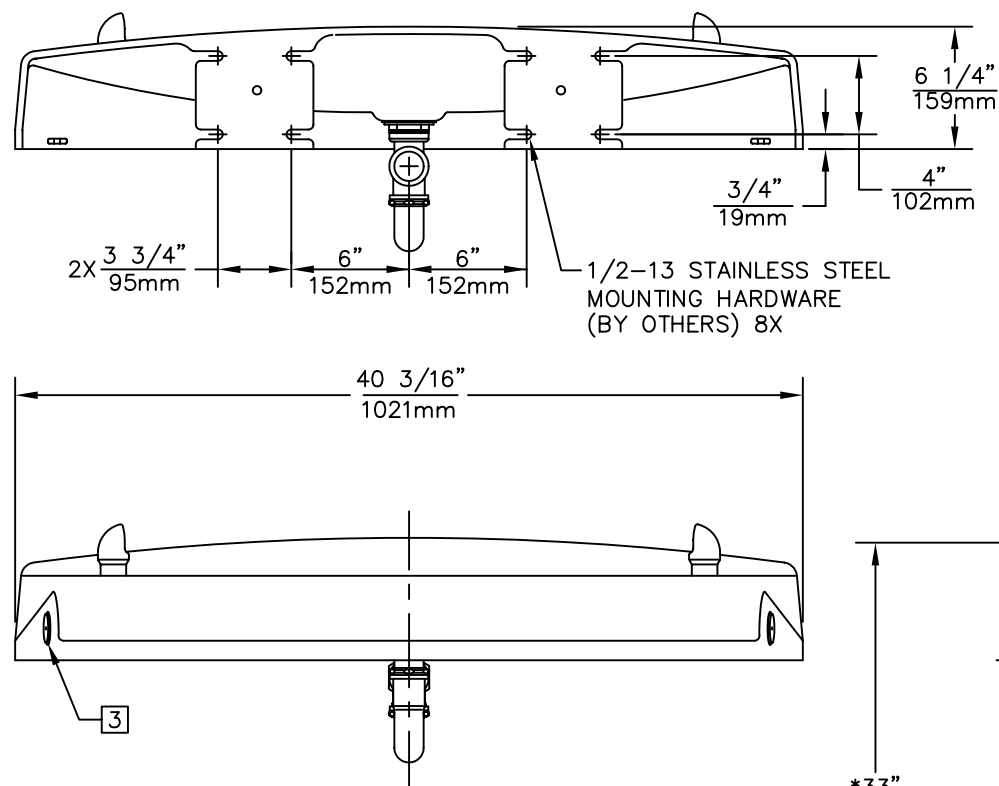
To see all options for this model, visit [www.hawesco.com](http://www.hawesco.com)

### APPLICATIONS

Perfect for either public or private settings, our gleaming white enameled-iron series is one of the sturdiest wall mounted wheel chair accessible fountains Haws produces. This unit is the perfect fit for high traffic areas where there is a greater need for multiple drinking stations. Elegant gloss finish and color consistency throughout the enameled-iron maintain the fountains overall appeal so it always remains looking as new as it did when it was installed. Specifically, this type of wall mounted drinking fountain may be placed in settings such as: parks, schools, and other indoor/outdoor environments where the temperature remains above freezing.


Haws manufactures drinking fountains and electric water coolers to be lead-free by all known definitions including NSF/ANSI Standard 61, Section 9, California Proposition 65, and the Federal Safe Drinking Water Act. Product is compliant to California Health and Safety Code 116875 (AB 1953-2006).



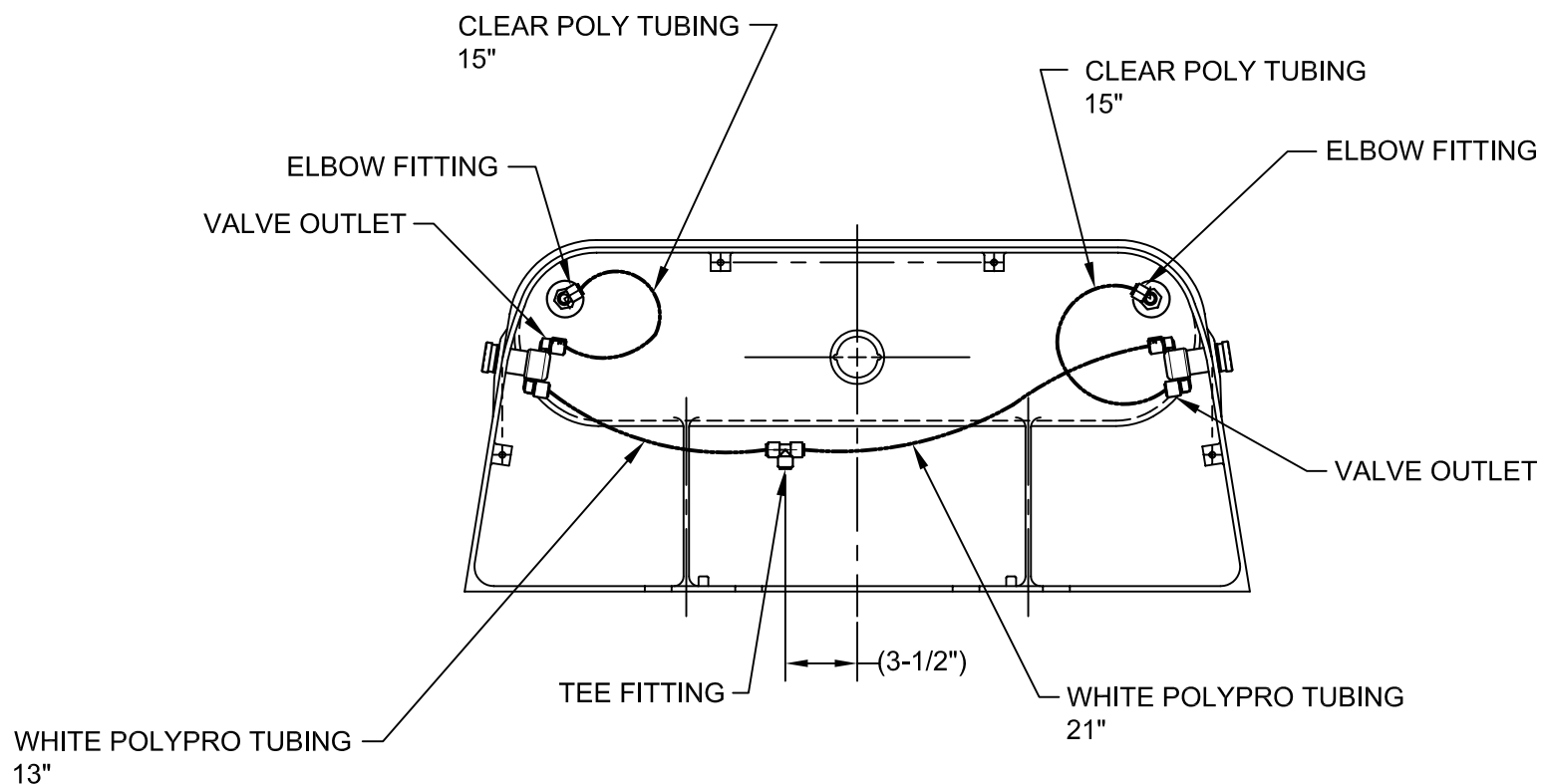



## NOTES:

1. HOLD ROUGH-IN DIMENSIONS  $\pm 1/4"$  (6.4mm).
2. WHEN INSTALLING THIS UNIT, LOCAL, STATE, OR FEDERAL CODES SHOULD BE ADHERED TO. FOR INSTALLATION HEIGHTS OTHER THAN SHOWN, DIMENSIONS MARKED (\*) MUST BE ADJUSTED ACCORDINGLY.
3. REFER TO 5874/VRK5874 OPERATION AND MAINTENANCE MANUAL FOR PUSH BUTTON AND VALVE INSTALLATION/MAINTENANCE INSTRUCTONS.

				1455 KLEPPE LANE SPARKS, NEVADA 89431 (775) 359-4712 FAX (775) 359-7424 E-MAIL: HAWS@HAWS.CO.COM WEBSITE: WWW.HAWS.CO.COM			
ECN NO.:	REVISED PER:	BY:	MODEL(S)				
DRAWN:	DATE:	CHKD.:					
APPROVED:	DATE:						
SCALE: 1:10				DRAWING TYPE:		INSTALLATION	
				SIZE: A		SHEET 1 OF 2	

4. CONNECT WHITE "POLYPROPYLENE" TUBING ON PRESSURE SIDE (INLET) OF VALVE.
5. CONNECT CLEAR "POLYETHYLENE" TUBING ON FREE FLOW SIDE (VALVE TO BUBBLER HEAD) ONLY.



 <b>Haws®</b>		1455 KLEPPE LANE SPARKS, NEVADA 89431 (775) 359-4712 FAX (755) 359-7424 E-MAIL: HAWS@HAWS.CO.COM WEBSITE: WWW.HAWS.CO.COM																													
		<table border="1"> <tr> <td>ECN NO.:</td> <td>REVISED PER:</td> <td>BY:</td> <td>MODEL(S)</td> <td>PART NUMBER</td> </tr> <tr> <td>ECN: 4603</td> <td>HM</td> <td></td> <td>1431</td> <td>0002076851.D</td> </tr> <tr> <td>DRAWN:</td> <td>DATE:</td> <td>CHKD:</td> <td></td> <td>DRAWING NO.</td> </tr> <tr> <td>PM</td> <td>09/20/00</td> <td></td> <td></td> <td>14819A00</td> </tr> <tr> <td>APPROVED:</td> <td>DATE:</td> <td></td> <td></td> <td>REV</td> </tr> <tr> <td></td> <td></td> <td></td> <td></td> <td>12</td> </tr> </table>		ECN NO.:	REVISED PER:	BY:	MODEL(S)	PART NUMBER	ECN: 4603	HM		1431	0002076851.D	DRAWN:	DATE:	CHKD:		DRAWING NO.	PM	09/20/00			14819A00	APPROVED:	DATE:			REV			
ECN NO.:	REVISED PER:	BY:	MODEL(S)	PART NUMBER																											
ECN: 4603	HM		1431	0002076851.D																											
DRAWN:	DATE:	CHKD:		DRAWING NO.																											
PM	09/20/00			14819A00																											
APPROVED:	DATE:			REV																											
				12																											
SCALE: 1:10		DRAWING TYPE: INSTALLATION		SIZE: A																											
SHEET 2 OF 2																															