



model 3377G

Pedestal-Mounted Drinking Fountain

FEATURES & BENEFITS

BARRIER-FREE

Barrier-free capabilities combined with its ease of use allows for a number of installation location possibilities.

QUALITY CONTROL

Fountain is pre-built and fully water and pressure tested to ensure no leaks and proper function for reduced installation time and added peace of mind.

BUBBLER HEAD

Polished chrome-plated brass bubbler head with integral laminar flow prevents splashing and provides a superior flow pattern. The integral basin shank and inserted roll pin adds vandal resistance strength to the design, and the shielded angled stream orifice produces a steady sanitary source of water.

GALVANIZED FINISH

Tough galvanized coating is ideal for areas where vandalism and graffiti is an issue. Due to the galvanizing process, appearance of the finish may vary.

CONSTRUCTION

Heavy duty 3/16" (.47 cm) galvanized steel pedestal is supported by an integral mounting plate, and access is gained from the top down access plate. 18 gauge Type 304 Stainless Steel swirl design bowl, 14 gauge Type 304 Stainless Steel bracket, and a vandal-resistant bottom plate provides a long lasting unit with added peace of mind.

PUSH BUTTON

With its patented (Pat. # 6,981,692) stainless steel, push-button activated valve assembly which allows for front access stream adjustment as well as cartridge and strainer access, this fountain offers 100% lead free waterways. The valve works at an operating pressure range of 30 to 90 psi (2.1 to 6.2 bar).

OPTIONS

- ❑ Bib Faucet: Model 6250LF, self-closing, plain end, lead-free, brass bib faucet with polished chrome-plated finish. (When used with Haws concrete products, include part 0004499489)
- ❑ Sand Trap: Model 6611, sand trap for installing adjacent to pedestal drinking fountains to help prevent debris and contaminants from clogging waste line.

To see all options for this model, visit www.hawsc.com



SPECIFICATIONS

Model 3377G barrier-free pedestal drinking fountain shall include a 14 gauge Type 304 Stainless Steel satin finish bracket, 18 gauge Type 304 Stainless Steel satin finish basin with integral swirl design, 100% lead-free waterways, push-button operated stainless steel valve with front-accessible cartridge and flow adjustment, polished chrome-plated brass vandal-resistant bubbler head with integral laminar anti-squirt flow, chrome-plated brass vandal-resistant waste strainer, vandal-resistant bottom plate, 3/16" (.47 cm) galvanized steel top-access pedestal, integral mounting plate, and 1-1/4" IPS waste.

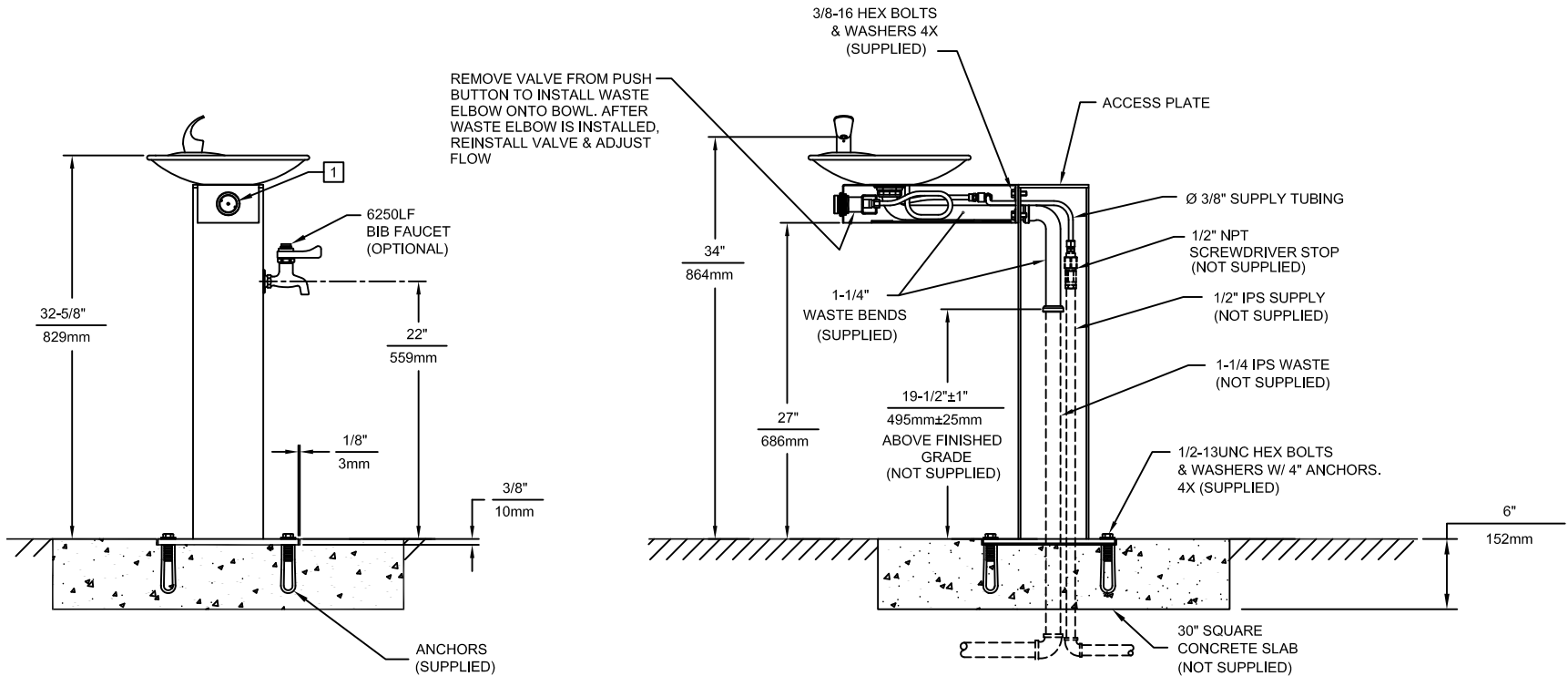
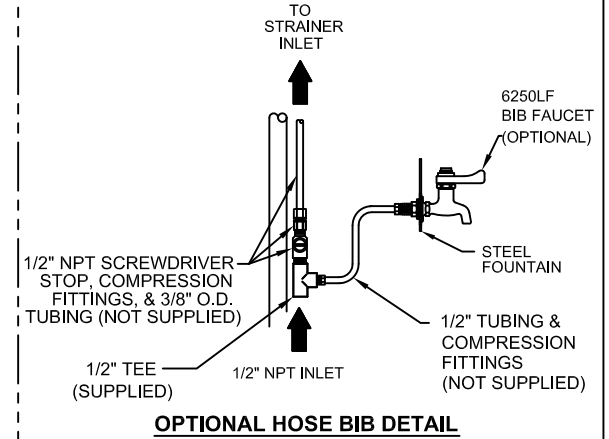
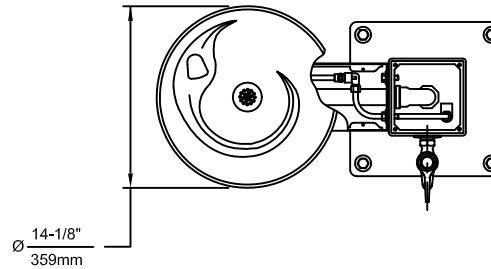
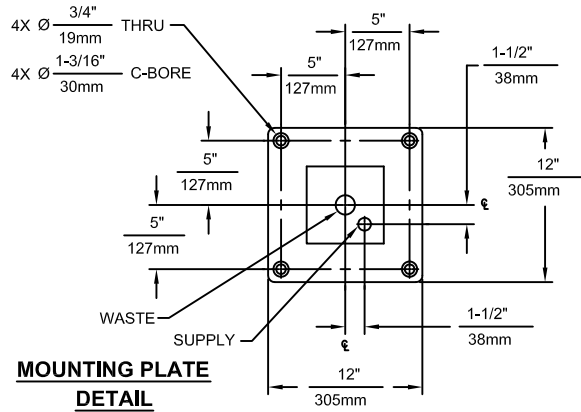
APPLICATIONS

Perfect for either public or private outdoor settings, the 3377G is a great fit in areas where aesthetics are important to the overall appeal of the architecture. Suitable in areas where weather conditions exist, this series stands strong as a nice addition to any community. Galvanized finish help to maintain the fountains overall appeal so it remains looking as new as it did when it was installed. This type of pedestal drinking fountain may also be placed in a variety of settings such as: parks, schools, and other outdoor environments around office buildings where the temperature remains above freezing.

Model meets all current Federal Regulations for the disabled including those in the Americans with Disabilities Act. Haws manufactures drinking fountains and electric water coolers to be lead-free by all known definitions including NSF/ANSI Standard 61, Section 9, California Proposition 65, and the Federal Safe Drinking Water Act. Product is compliant to California Health and Safety Code 116875 (AB 1953-2006).



THIS DOCUMENT IS TRUE AND CORRECT AT TIME OF PUBLICATION. CONTINUED PRODUCT IMPROVEMENTS MAKE SPECIFICATIONS AND MEASUREMENTS SUBJECT TO CHANGE WITHOUT NOTICE.



1455 KLEPPE LANE
SPARKS, NEVADA 89431
(775) 359-4712 FAX (755) 359-7424
E-MAIL: HAWS@HAWS.CO.COM
WEBSITE: WWW.HAWS.CO.COM

ECN NO. REVISED PER BY:	ECN: 4646	HM	MODEL(S)	PART NUMBER
DRAWN: RTM	DATE: 05/97	CHKD:	3377/3377G	0002077364.D
APPROVED:	DATE:			DRAWING NO. 13066A00
		SCALE: 1:15	DRAWING TYPE: INSTALLATION	REV 11
			SIZE: A	SHEET 1 OF 1