

## FEATURES & BENEFITS

### BUBBLER HEAD

Polished chrome-plated brass bubbler head with an integral basin shank and inserted roll pin add vandal resistance strength to the design, and the shielded, angled stream orifice produces a steady sanitary source of water.

### CONSTRUCTION

Heavy-duty 11-gauge galvanized steel finished pedestal incorporates a rounded tube design for an aesthetically pleasing fountain, and a vandal-resistant access plate for added peace of mind.

### FREEZE-RESISTANT VALVE

Fully-engineered system with the pneumatic-operated, freeze-resistant valve installed below frost line to drain water to non-freezing depth allowing fountain to function year round. Assembly can be lifted to surface and lowered back into casing for easy maintenance without disturbing the fountain.

### VANDAL-RESISTANT

The bubbler head, push button, round bowl, drain strainer and bottom plate are locked in place, discouraging unwanted vandal tampering.

## OPTIONS

For more information, visit [www.hawscos.com](http://www.hawscos.com) or call (888) 640-4297.



## SPECIFICATIONS

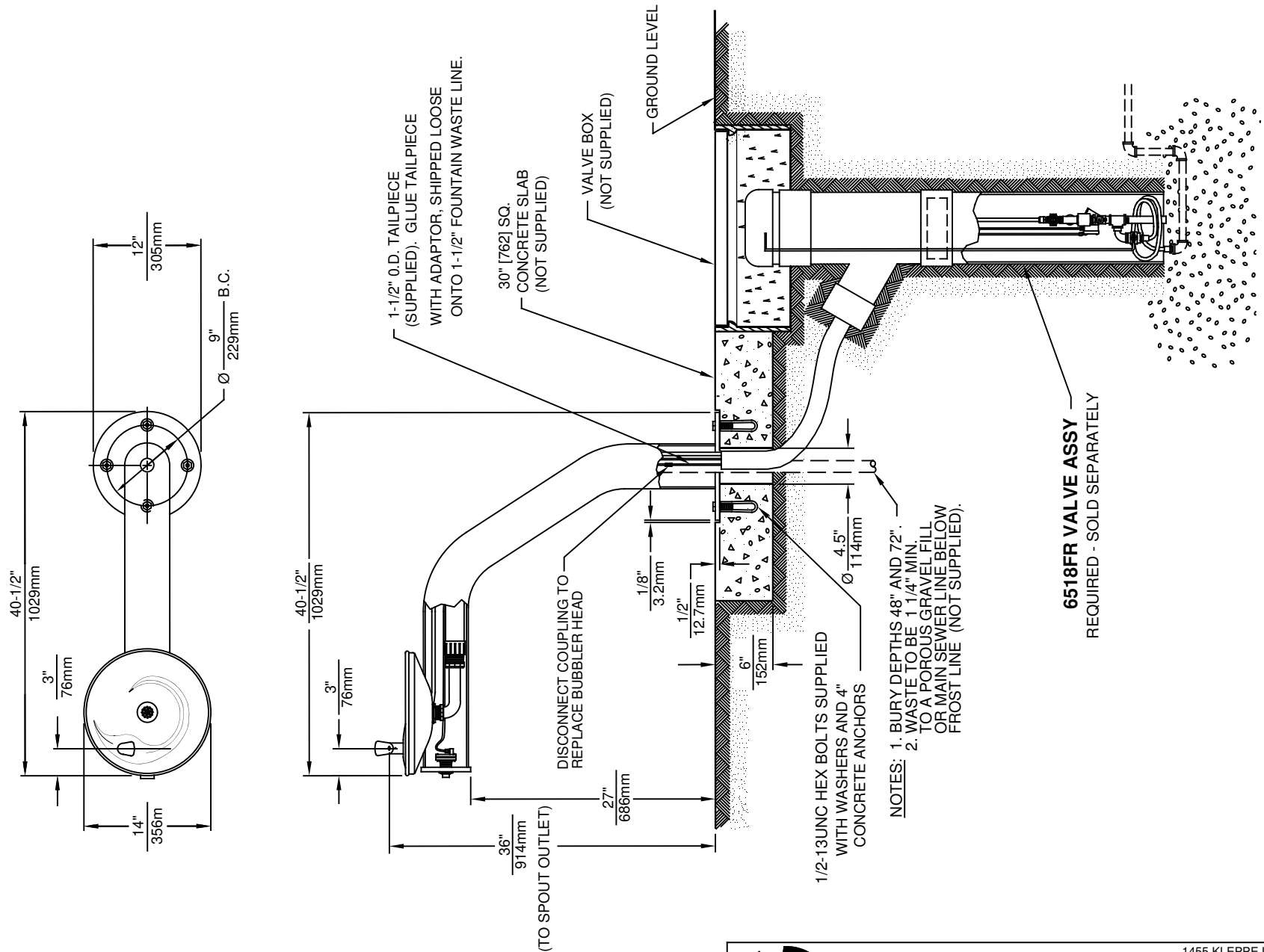
Model 3380GFR ADA vandal-resistant, freeze-resistant pedestal drinking fountain shall include an 18-gauge Type 304 Stainless Steel satin finish basin with integral swirl design, polished chrome-plated brass push button, polished chrome-plated brass vandal-resistant bubbler head, chrome-plated brass vandal-resistant waste strainer, 11-gauge galvanized steel pedestal, integral mounting plate, and 1-1/2" O.D. tailpiece.


**REQUIRES MODELS 3380GFR & 6518FR ORDERED SEPARATELY. (Consult with the local authority having jurisdiction before installation in order to determine if any additional regulations or requirements may apply)**

## APPLICATIONS

Perfect for either public or private outdoor settings, the 3380GFR is a great fit in areas where aesthetics are important to the overall appeal of the architecture. Galvanized finish helps to maintain the fountain's overall appeal. This type of pedestal drinking fountain may also be placed in a variety of settings such as: parks, schools, and other outdoor environments around office buildings where the temperature may drop into freezing conditions. Model meets all current Federal Regulations for the disabled including those in the Americans with Disabilities Act. Haws manufactures drinking fountains, faucets and electric water coolers to be lead-free by all known definitions including NSF/ANSI/CAN 61-Section 9, NSF/ANSI/ CAN 372, California Proposition 65, and the Federal Safe Drinking Water Act. Product is compliant to California Health and Safety Code 116875 (AB 1953-2006), and 116876 (AB 100) "NSF/ANSI/CAN 61: Q  $\leq$  1".







1455 KLEPPE LANE  
SPARKS, NEVADA 89431  
(775) 359-4712 FAX (775) 359-7424  
E-MAIL: HAWS@HAWS.CO.COM  
WEBSITE: WWW.HAWS.CO.COM

ECN NO. ECN: 5527	REVISED PER BY: FV	MODEL(S)	PART NUMBER
DRAWN: C. HAYES	DATE: 08/12/92	CHKD: DP	3380FR/3380GFR
APPROVED: FV	DATE: 04/02/20	SCALE: 1:17	0002077370.D
		DRAWING TYPE: INSTALLATION	REVISION
		SIZE: A	17
			SHEET 1 OF 1