

FEATURES & BENEFITS

ADA COMPLIANCE

ADA-compliant drinking fountain can accommodate adult and child wheel chair access.

FRONT APPROACH

Face the water stations frontward and the overall footprint needed decreases, saving 33% of the hard scape required for access compliance. This also allows the fountain to be placed with its back to within 8 inches of a wall or a fence.

DRINKING FOUNTAIN VALVES

The push-button activated valves offers the only all stainless steel valve body that is machined out of solid bar stock, is fully serviceable through the front of the push button assembly offering access to the water control cartridge and integral water supply strainer, and with front access to the water stream height adjustment for easy maintenance without having to remove the valve. Operating pressure range of 30 to 90 psi (2.1 to 6.2 bar).

BUBBLER HEADS

Polished chrome plated brass bubbler heads with integral 5/8" dia. threaded shanks for vandal resistant strength, and top-down access for nozzle replacement or water line service, with .45 gpm flow rate.

CONSTRUCTION

Heavy-duty stainless steel with silver powder-coated finish, and stainless-steel drinking fountain bowls. Modular construction allows for easy replacement or rearrangement of drinking fountain bowls and bottle filler modules.

VANDAL RESISTANT

The bubbler heads, push buttons, drain strainers and access plates are locked in place, discouraging unwanted vandal tampering.

DRAIN CLEAN-OUT

Top-down access to the drain allows the fountain to be cleaned without taking the unit apart, good for outdoor settings with drain-clogging sand or leaves.

OPTIONS

- Sand Trap: Model 6611, sand trap for installing adjacent to pedestal drinking fountains to help prevent debris and contaminants from clogging waste line.
- Installation Aid: Model MTG.3600, mounting guide for 3600 series pedestals.

For more information, visit www.hawesco.com or call (888) 640-4297.



SPECIFICATIONS

Model 3603 outdoor, ADA vandal-resistant pedestal drinking fountain shall include a heavy-duty stainless steel pedestal with matte silver powder-coating, three drinking fountain stations, vandal-resistant push-button operated stainless steel valves with front-accessible cartridge and flow adjustment, polished chrome-plated brass vandal-resistant shielded bubbler heads with integral 5/8" dia. threaded shank and top-down access to renewable nozzles, 100% lead-free waterways, polished chrome-plated vandal-resistant waste strainers with top-down clean-out access, vandal-resistant access plates, integral mounting feet, and 1-1/2" slip waste. In extreme environments related to heat and cold, product(s) must be protected from damage/exposure due to these extreme conditions.

APPLICATIONS

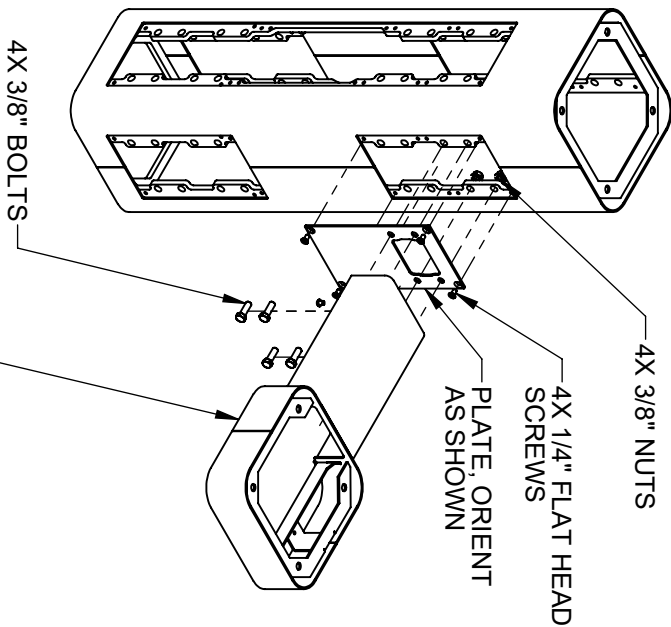
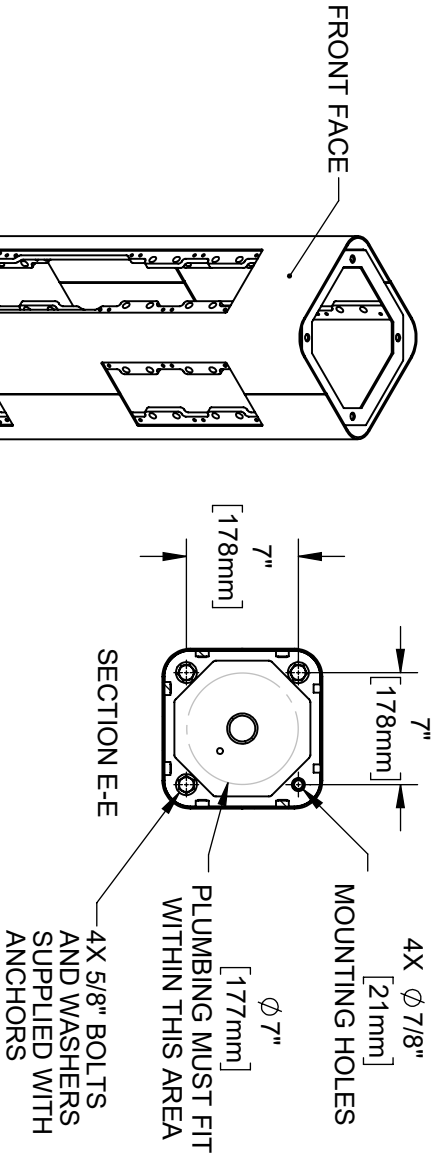
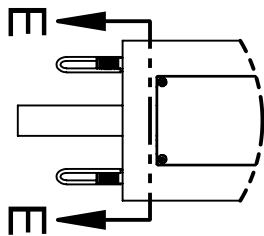
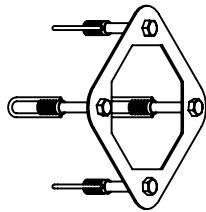
The 3603 offers a solution for the changing needs of outdoor settings as well as outdoor wheelchair access, appealing to all users through accessibility and safety. This outdoor drinking fountain is ideal in areas such as parks, schools, and other outdoor areas where hydration facilities are needed. Model meets all current Federal Regulations for the disabled including those in the Americans with Disabilities Act, and complies with Prop 65. Haws manufactures drinking fountains, faucets and electric water coolers to be lead-free by all known definitions including NSF/ANSI/CAN 61-Section 9, NSF/ANSI/ CAN 372, California Proposition 65, and the Federal Safe Drinking Water Act. Product is compliant to California Health and Safety Code 116875 (AB 1953-2006), and 116876 (AB 100) "NSF/ANSI/CAN 61: Q ≤ 1".



INSTALLATION INSTRUCTIONS

MODEL MTG.3600

(OPTIONAL)
TEMPLATE FOR
SPACING ANCHORS (INCLUDED)
DURING CONCRETE POUR



STEP 1

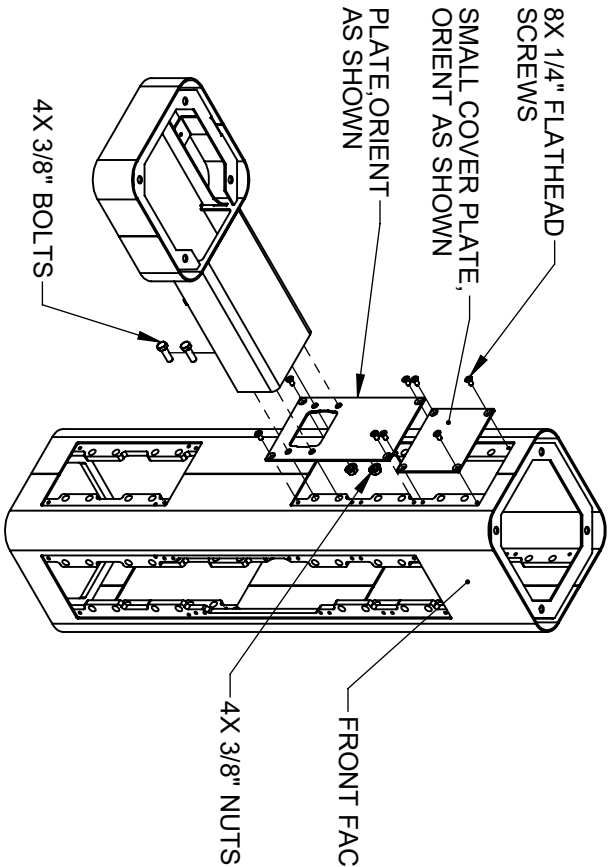
MOUNT PEDESTAL TO CONCRETE SLAB
IN DESIRED ORIENTATION. SLAB TO BE 30"
MINIMUM SQUARE AND 6 MINIMUM THICK
(NOT SUPPLIED). PLUMBING CAST IN CONCRETE
MUST FIT IN 7" DIAMETER AREA CENTERED
UNDER PEDESTAL LOCATION.

STEP 2

REMOVE BOTTOM COVER PLATES FROM ARMS BY
REMOVING 3 1/4" BUTTON HEAD SCREWS.
INSTALL ONE FOUNTAIN ARM ON RIGHT SIDE AS
SHOWN. USE 1/4" FLAT HEAD SCREWS (SUPPLIED) TO
INSTALL PLATE. USE 3/8" BOLTS AND NUTS (SUPPLIED)
AND TORQUE TO 18 FT-LBS TO INSTALL ARM.

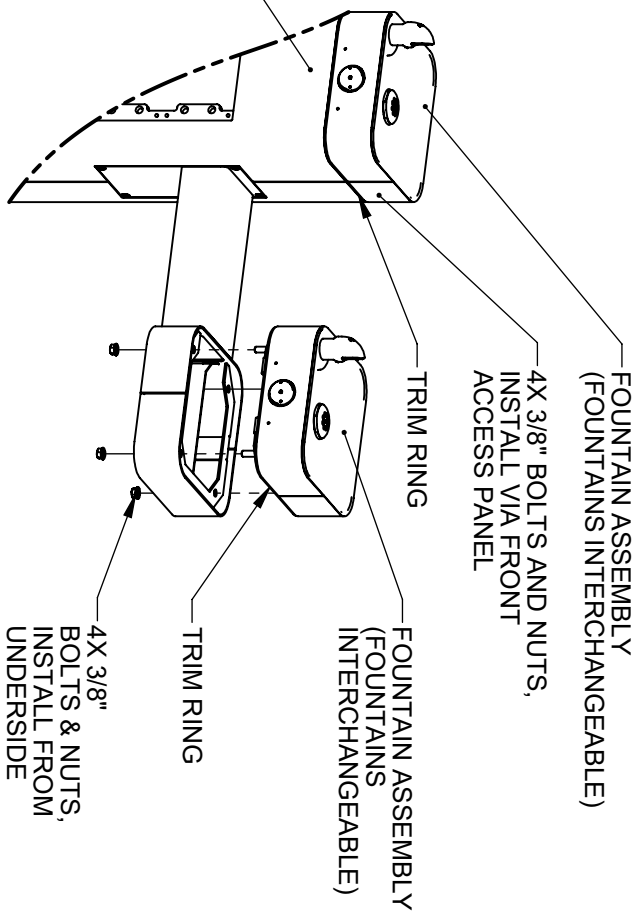
		1455 KLEPPE LANE SPARKS, NEVADA 89431 (775) 359-4712 FAX (775) 359-7424 E-MAIL: HAWS@HAWS.CO.COM WEBSITE: WWW.HAWS.CO.COM	
ENCL	REV/ENCL	BY	MODEL(S)
5226	6226	FV	3603 & 3603F
DRAWING	DATE	CHKD	
5226	8/1/25	KM	
APPROVED	DATE	SCALE	DRAWING TYPE
FV	05/09/25	1:12	INSTALLATION
		SIZE	SHEET 2 OF 8
		A	6
		PART NUMBER 0510000753.D	
		REVISION	

INSTALLATION INSTRUCTIONS



STEP 3

INSTALL REMAINING ARM ON LEFT SIDE AS SHOWN. USE 1/4" FLAT HEAD SCREWS (SUPPLIED) TO INSTALL PLATES. USE 3/8" BOLTS AND NUTS (SUPPLIED) AND TORQUE TO 18 FT-LBS TO INSTALL ARM.



STEP 4

PLACE SQUARE TRIM RING ON TOP OF PEDESTAL AND PLACE ONE FOUNTAIN ASSY. ON TOP OF TRIM RING, FACING THE FRONT. USE 3/8" BOLTS AND NUTS VIA THE FRONT ACCESS PANEL TO SECURE FOUNTAIN ASSY TO PEDESTAL. PLACE TRIM RING AND INSTALL REMAINING FOUNTAIN ASSEMBLIES. ON ARM AS SHOWN. CAREFULLY CENTER TRIM RINGS AND TORQUE BOLTS AND NUTS TO 18 FT-LBS



Since 1906

1455 KLEPPE LANE

SPARKS, NEVADA 89431

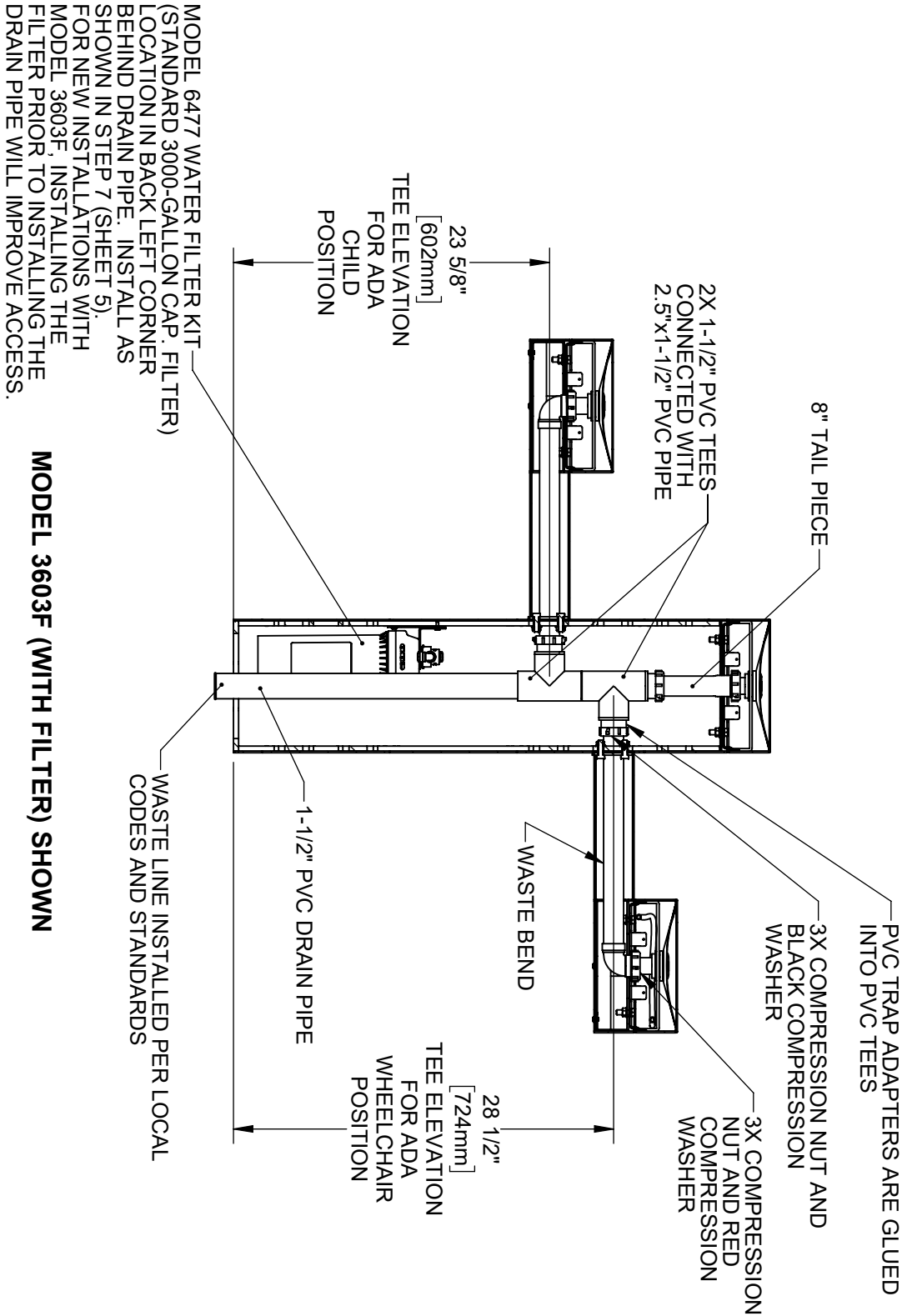
(775) 359-4712 FAX (775) 359-7424

E-MAIL: HAWS@HAWS.CO.COM

WEBSITE: WWW.HAWS.CO.COM

ECN:	REV. ECN:	BY:	MODEL(S)	PART NUMBER
5226	6226	F.V.	3603 & 3603F	0510000753.D
DRAWN:	DATE:	CHK'D:		REVISION
5226	6/10/25	KM		6
APPROVED:	DATE:	SCALE:	DRAWING TYPE:	SHEET 3 OF 8
F.V.	06/09/25	1:12	INSTALLATION	

INSTALLATION INSTRUCTIONS



MODEL 3603F (WITH FILTER) SHOWN

STEP 5

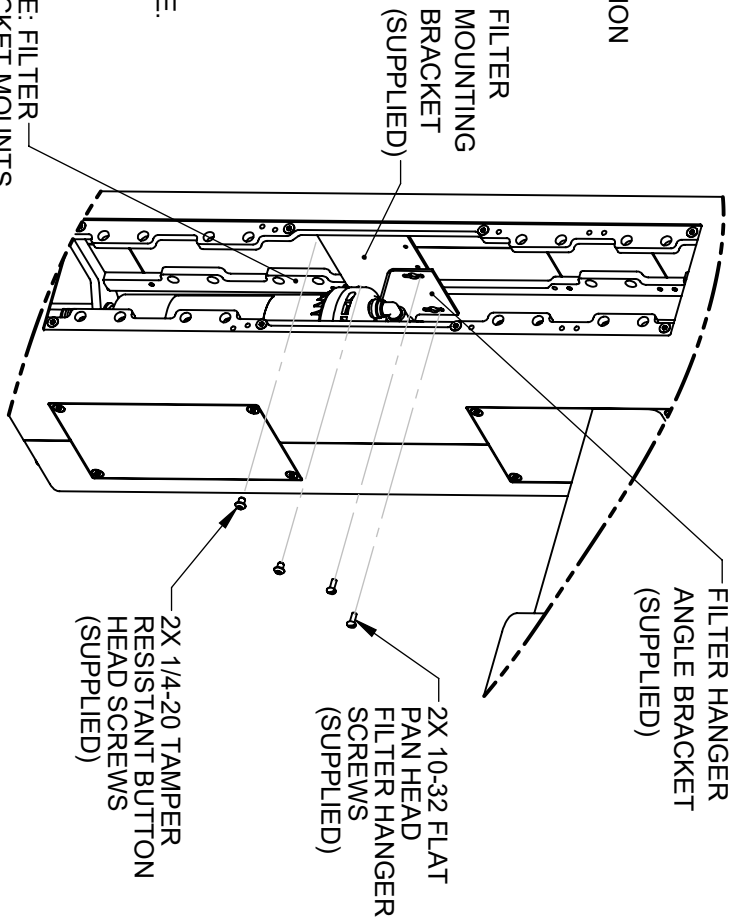
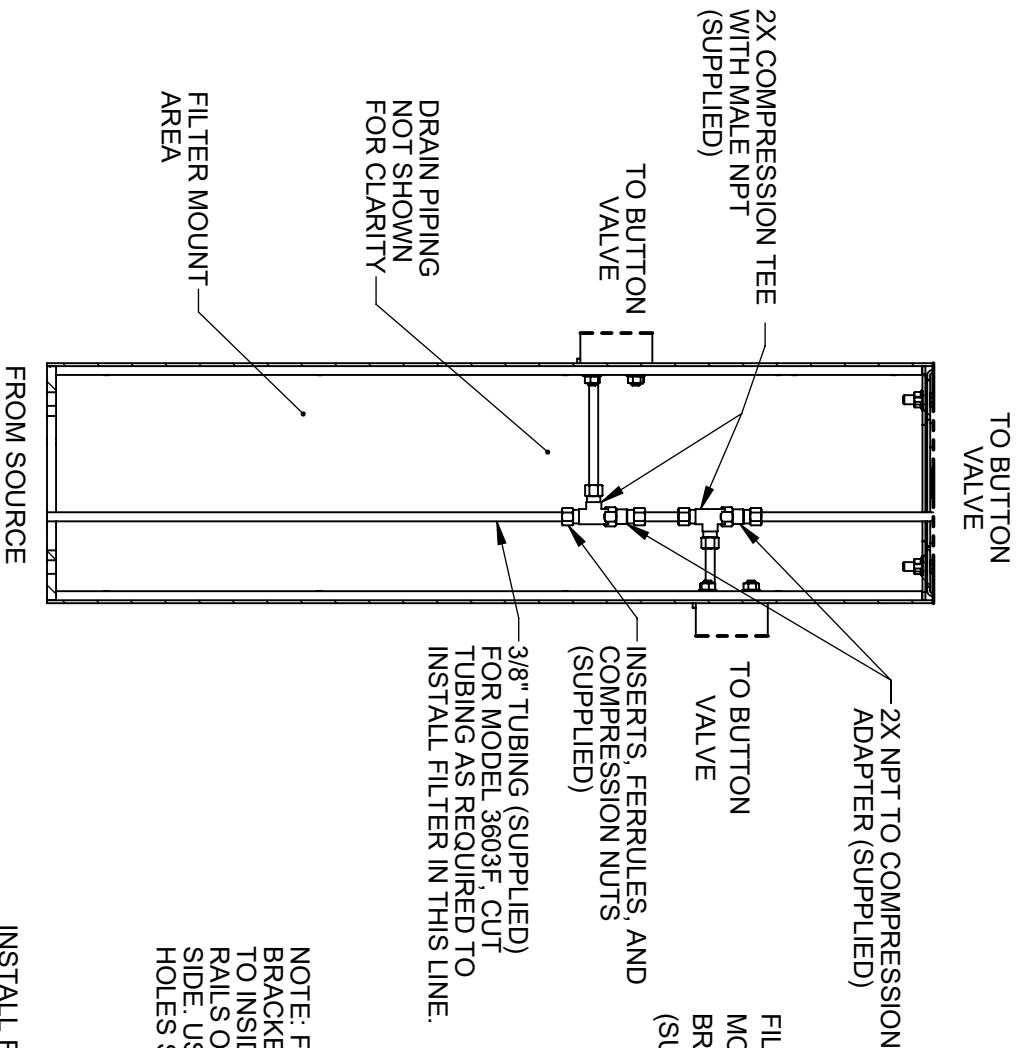
INSTALL SUPPLIED DRAIN COMPONENTS AS SHOWN. RED COMPRESSION WASHERS ADAPT FROM 1-1/4" TO 1-1/2" AT EACH DRAIN TAIL PIECE. BLACK COMPRESSION WASHERS ARE USED IN TRAP ADAPTERS AT TEE. USE APPROPRIATE PVC CEMENT TO MAKE SOLVENT CEMENT CONNECTIONS. TRIM WASTE BEND AND/OR TAIL PIECE LENGTH IF REQUIRED. NOTE THAT EXTRA PARTS MAY BE INCLUDED TO FACILITATE OTHER CONFIGURATIONS OF THIS FOUNTAIN.



1455 KLEPPE LANE
SPARKS, NEVADA, 89431
(775) 359-4712 FAX (775) 359-7424
E-MAIL: HAWS@HAWS.CO.COM
WEBSITE: WWW.HAWS.CO.COM

ECN	REV. ECN.	BY:	MODEL(S)	
5226	6226	F.V.	3603 & 3603F	
DRAWN	DATE	CHK'D		
5/12/25	8/1/25	K.M.		
APPROVED	DATE	SCALE	1:12	DRAWING TYPE: INSTALLATION
F.V.	05/09/25			SIZE: A
				SHEET 4 OF 8
				REVISION
				6
				PART NUMBER
				0510000753.D

INSTALLATION INSTRUCTIONS



3603F FILTER BRACKET MOUNTING

STEP 7

INSTALL FILTER MOUNTING BRACKET (SUPPLIED WITH MODEL 6477) TO LEFT INSIDE VERTICAL RAILS USING 2 BUTTON HEAD SCREWS AS INDICATED ABOVE. INSTALL FILTER HEAD ON HANGER ANGLE WITH 4 SUPPLIED SELF-TAPPING SCREWS. IF USING THE SUPPLIED 3000-GALLON CAPACITY FILTER, INSTALL FILTER HANGER ANGLE BRACKET IN RIGHTMOST HOLES AS SHOWN. SEE SHEET 6 FOR OWNER-PROVIDED FILTER (6000-GALLON CAP.) INSTALLATION INSTRUCTIONS. SEE MODEL 6477 OPERATION AND MAINTENANCE MANUAL FOR ADDITIONAL DETAILS.

3603 SUPPLY PLUMBING

STEP 6

COMPLETE WATER SUPPLY PLUMBING AS SHOWN. OPEN SUPPLY VALVE(S) AND TEST. REPLACE ARM BOTTOM PLATES AND PEDESTAL ACCESS PLATES.

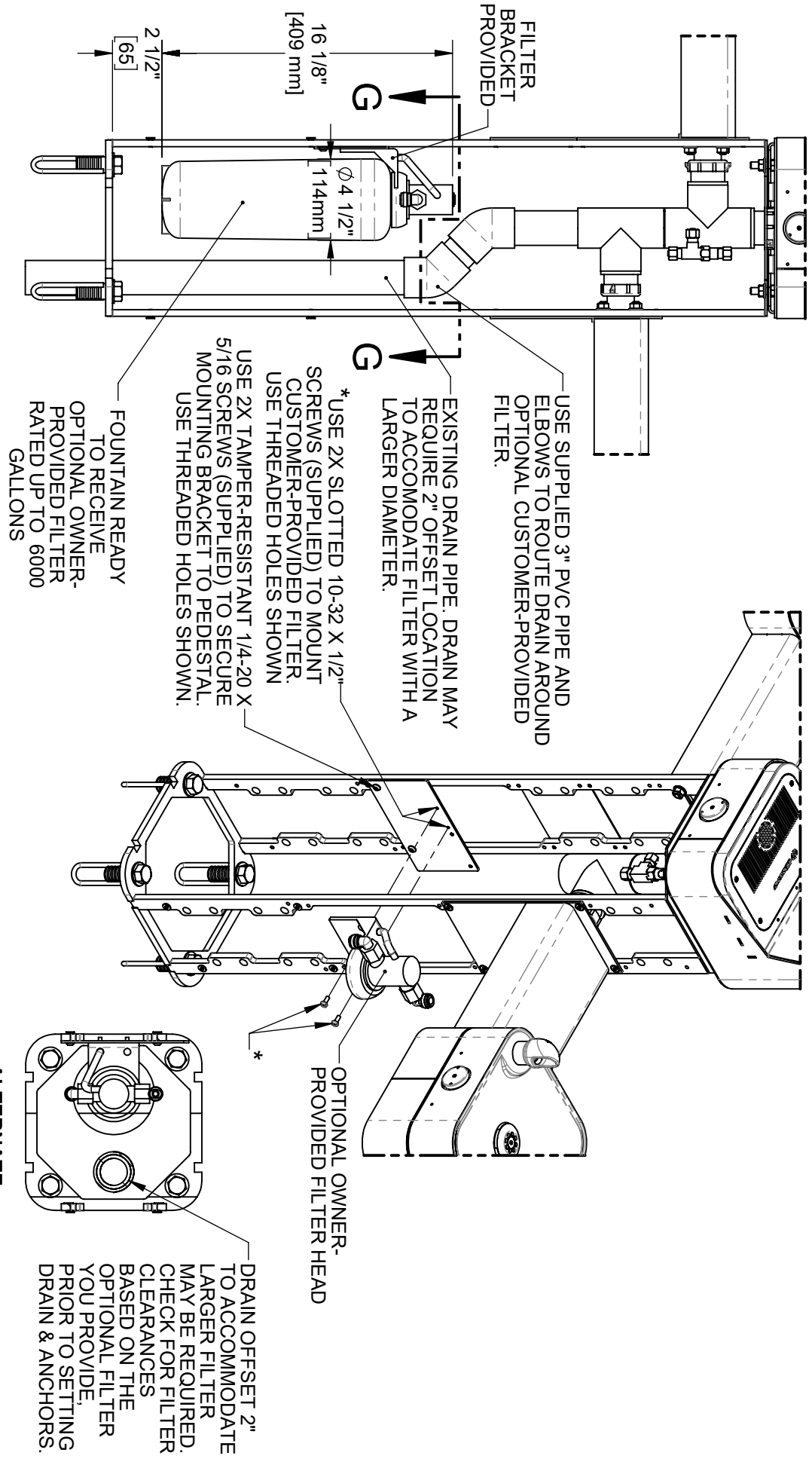


Haws
Since 1906

1455 KLEPPE LANE
SPARKS, NEVADA 89431
(775) 359-4712 FAX (775) 359-7424
E-MAIL: HAWS@HAWS.CO.COM
WEBSITE: WWW.HAWS.CO.COM

ECN: 5226	REV/ECN: F.V.	BY: F.V.	MODEL(S): 3603 & 3603F	PART NUMBER: 0510000753.D
DRAWING: 5226	DATE: 06/29/25	CHKD: KML	SCALE: 1/8"	REVISION: 6
APPROVED: F.V.	DATE: 06/30/25	SCALE: 1/8"	DRAWING TYPE: INSTALLATION	SHEET 5 OF 8

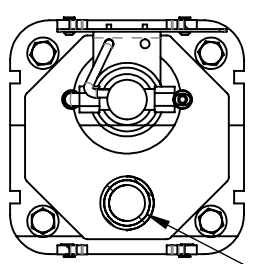
OPTIONAL OWNER-PROVIDED FILTER INSTALLATION



INSTRUCTIONS FOR OPTIONAL OWNER-PROVIDED FILTER

NOTE: MOUNTING BRACKET, 1-1/2" X 3" PVC PIPE AND 45° PVC ELBOWS (QTY. 2) SUPPLIED WITH 6477 FILTER MOUNTING KIT ARE REQUIRED (SHOWN ON MODEL 3612/3612F FOR REFERENCE ONLY). INSTALLATION INSTRUCTIONS APPLY TO EITHER NEW OR RETROFIT APPLICATIONS. SEE SHEETS 4 AND 5 FOR STANDARD FILTER (3000-GALLON CAPACITY) INSTALLATION INSTRUCTIONS.

ALTERNATE DRAIN LOCATION FOR CUSTOMER SUPPLIED OPTIONAL FILTER SECTION A-A



DRAIN OFFSET 2" TO ACCOMMODATE LARGER FILTER. MAY BE REQUIRED. CHECK FOR FILTER CLEARANCES BASED ON THE OPTIONAL FILTER YOU PROVIDE. PRIOR TO SETTING DRAIN & ANCHORS.

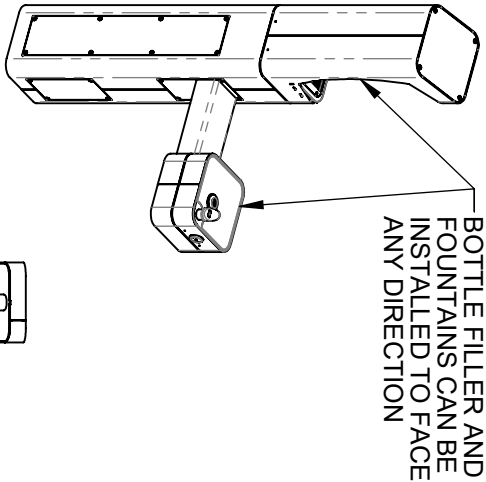


Haws
Since 1906

EN: 5226	REV. EN: 6226	BY: F.V.	MODEL(S): 3603 & 3603F	1455 KLEPPE LANE SPARKS, NEVADA 89431 (775) 359-4712 FAX (775) 359-7424 E-MAIL: HAWS@HAWS.CO.COM WEBSITE: WWW.HAWS.CO.COM
DRAWN: 8/1/25	DATE: 8/1/25	CHKD: KML		
APPROVED: F.V.	DATE: 05/09/25	SCALE: 1/24	DRAWING TYPE: INSTALLATION	SHEET 6 OF 8
				PART NUMBER: 0510000753.D REVISION: 6

NOTES ON OPTIONAL CONFIGURATIONS

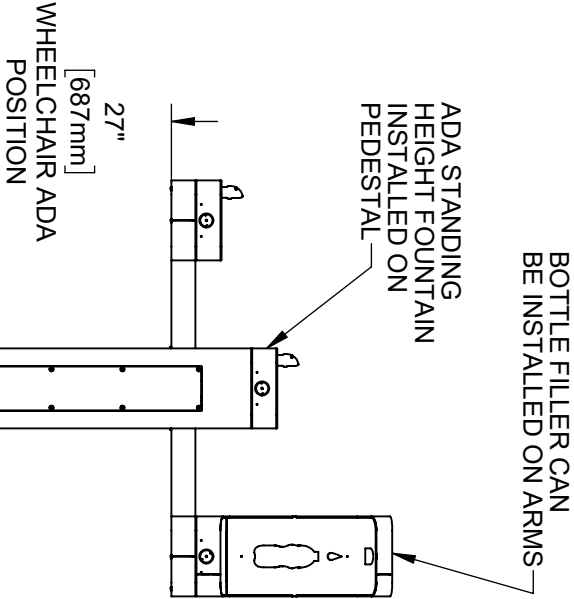
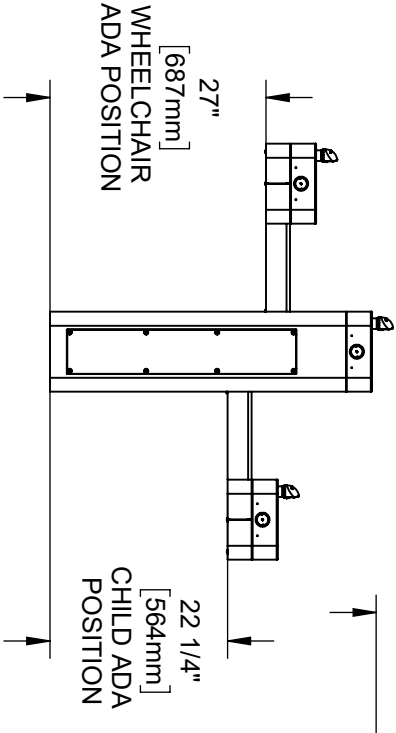
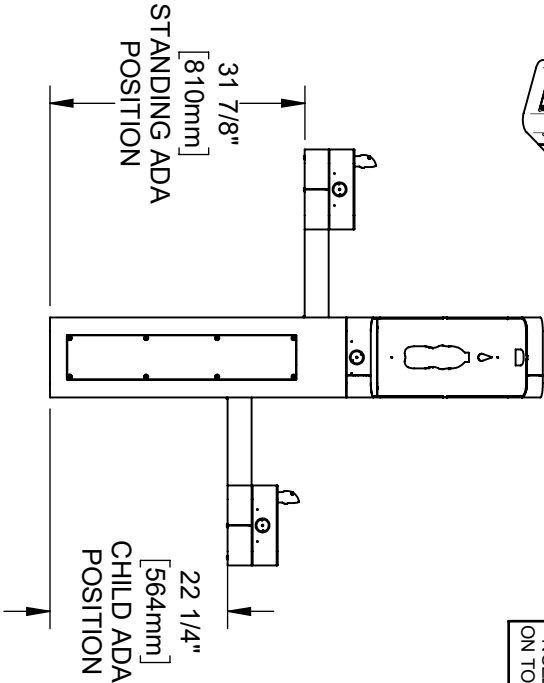
HAWS 3600/3600F SERIES OUTDOOR FOUNTAINS ARE MODULAR AND CAN BE ASSEMBLED AND CONFIGURED MANY DIFFERENT WAYS. DISPLAYED HERE ARE A FEW EXAMPLES. CONFIGURATIONS OTHER THAN THAT SHOWN IN THE INSTALLATION INSTRUCTIONS FOR THE 3603/3603F MAY AFFECT COMPLIANCE WITH ADA REGULATIONS. IT IS THE RESPONSIBILITY OF THE INSTALLER TO UNDERSTAND LOCAL, STATE, AND FEDERAL REGULATIONS AS APPLICABLE IF INSTALLING THIS FOUNTAIN IN CONFIGURATIONS OTHER THAN THAT INDICATED ON SHEET 1 (PAGE 6 OF 13).



ADA ARM HEIGHT POSITION OPTIONS				
	LEFT SIDE*	RIGHT SIDE*	ARM HEIGHT (LOWER EDGE)	BUBBLER NOZZLE HEIGHT
STANDING ADA	YES (STD)	NO	31-7/8 [809 mm]	39-3/8 [999 mm]**
WHEELCHAIR ADA	YES	YES (STD)	27 [687 mm]	34-5/8 [878 mm]
CHILD ADA	YES	YES	22-1/4 [566 mm]	29-7/8 [757 mm]

* RIGHT AND LEFT CAN BE REVERSED IF PEDESTAL IS ROTATED 180°.

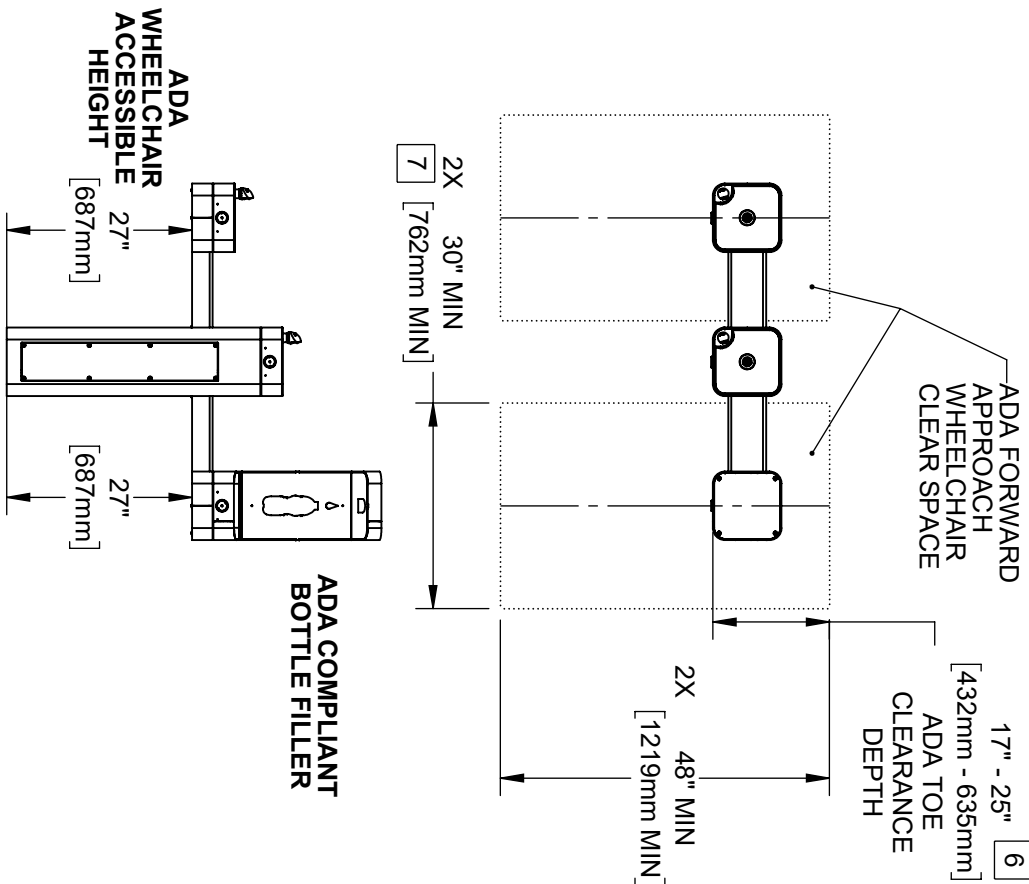
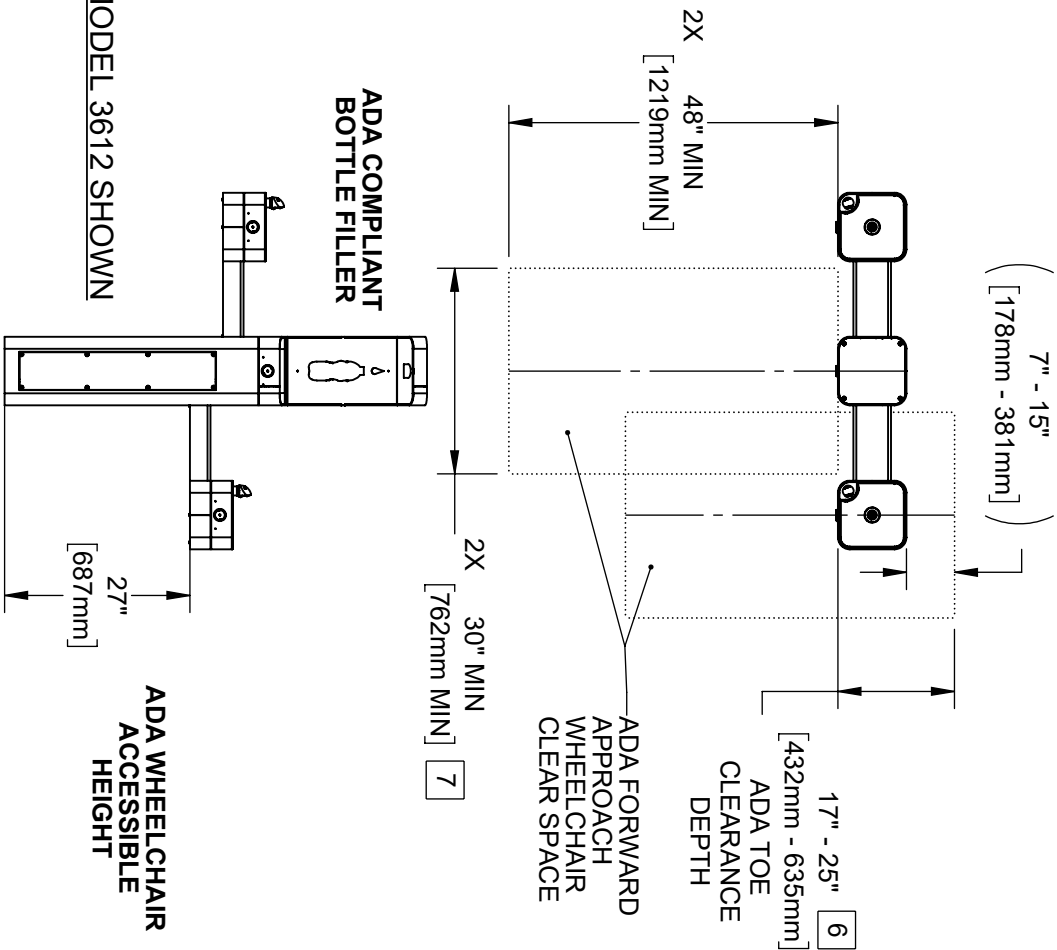
**NOZZLE HEIGHT IS 41-1/2" WHEN FOUNTAIN IS INSTALLED ON TOP OF PEDESTAL.



ECN: 5226	REV/ECN: 6226	BY: F.V.	MODEL(S): 3603 & 3603F	1455 KLEPPE LANE SPARKS, NEVADA 89431 (775) 359-4712 FAX (775) 359-7424 E-MAIL: HAWS@HAWS.CO.COM WEBSITE: WWW.HAWS.CO.COM
DRAWING: 81025	DATE: 01/25	CHK'D: KM		
APPROVED: F.V.	DATE: 05/09/25	SCALE: 1/24	DRAWING TYPE: INSTALLATION	SHEET 7 OF 8
			SIZE: A	
				REVISION: 6
				PART NUMBER: 0510000753.D


NOTES (CONTINUED FROM SHEET 1):

4. CLEAR FLOOR SPACES APPLY FOR ALL MODELS WITH A DRINKING FOUNTAIN OR BOTTLE FILLER INSTALLED AT ADA WHEELCHAIR ACCESSIBLE HEIGHT AND PEDESTAL MOUNTED BOTTLE FILLEERS.
5. ORIENTATION OF CLEAR FLOOR SPACE IS DEPENDENT ON THE FOUNTAIN OR BOTTLE FILLER ORIENTATION.
- 6 SOME CALIFORNIA JURISDICTIONS MAY REQUIRE 18" MIN.
- 7 SOME CALIFORNIA JURISDICTIONS MAY REQUIRE 32" MIN.
8. REFER TO ADA STANDARDS AND/OR YOUR LOCAL BUILDING CODE FOR CLEAR SPACE GUIDELINES FOR PARALLEL APPROACH.



MODEL 3612 ALTERNATE CONFIGURATION SHOWN

THESE HAWS MODELS ARE FULLY COMPLIANT WITH THE FEDERAL 2010 AMERICANS WITH DISABILITIES ACT (ADA) ACCESSIBILITY REQUIREMENTS WHEN INSTALLED AS SHOWN HERE AND WHEN INSTALLED WITH PROPER CLEARANCES AND ACCESS. IT IS THE RESPONSIBILITY OF THE INSTALLER TO ADHERE TO LOCAL, STATE, AND FEDERAL CODES WHEN INSTALLING THIS UNIT. DISTANCE TO SURROUNDING OBJECTS, APPROACH SURFACES, ETC. SHOULD BE CONSIDERED.

		1455 KLEPPE LANE SPARKS, NEVADA 89431 (775) 359-4712 FAX (775) 359-7424 E-MAIL: HAWS@HAWS.CO.COM WEBSITE: WWW.HAWS.CO.COM	
ENCL	REV/ENCL	BY:	MODEL(S)
5226	6226	FV	3603 & 3603F
DRAWING	DATE	CHKD	
5226	6/1/20	KML	
APPROVED	DATE	SCALE	DRAWING TYPE
FV	06/09/25	1/28	INSTALLATION
		SIZE	SHEET 8 OF 8
		A	6
		PART NUMBER 0510000753.D	
		REVISION	