

## FEATURES & BENEFITS

### ADA COMPLIANCE

ADA-compliant bottle filling station and dual-height high-low drinking fountain required for wheel chair use, and for the standing person.

### FRONT APPROACH

Face all three water stations frontward and the overall footprint needed is only 73 inches wide, saving 33% of the hard scape required for access compliance. This also allows the fountain to be placed with its back to within 8 inches of a wall or a fence.

### BOTTLE FILLER

The ADA-compliant open design bottle filling station offers a 17" high bottle area, and open sides making this push button operated bottle filling station more accessible to users.

### FREEZE-RESISTANT VALVE

Fully-engineered system with the pneumatic-operated, freeze-resistant valve installed below frost line to drain water to non-freezing depth allowing fountain to function year round. Assembly can be lifted to surface and lowered back into casing for easy maintenance without disturbing the fountain.

### BUBBLER HEADS

Polished chrome-plated brass bubbler heads with integral 5/8" dia. threaded shank for vandal resistant strength, and top-down access for nozzle replacement or water line service, with .45 gpm flow rate.

### CONSTRUCTION

Heavy-duty stainless steel with silver powder-coated color finish, and stainless-steel drinking fountain bowls. Modular construction allows for easy replacement or rearrangement of drinking fountain bowls and bottle filler modules.

### DRAIN CLEAN-OUT

Top-down access to the drain allows the fountain to be cleaned without taking the unit apart, good for outdoor settings with drain-clogging sand or leaves.



## SPECIFICATIONS

Model 3612FRBFA outdoor, freeze-resistant ADA-compliant pedestal mounted bottle filler and high-low drinking fountain shall include a heavy-duty stainless steel pedestal with matte silver powder-coating, bottle filler and fountain mounted on adult wheelchair height arm, fully engineered pneumatic valve assemblies, polished chrome-plated brass vandal-resistant shielded bubbler heads with integral 5/5/8" dia. threaded shank and top-down access to renewable nozzles, large opening bottle filler with quick-fill 1 gpm flow rate, 100% lead-free waterways, polished chrome-plated vandal resistant waste strainers with top-down clean-out access to the drain, vandal-resistant access plates, integral mounting feet, and 1-1/2" slip waste. In extreme environments related to heat and cold, product(s) must be protected from damage/exposure due to these extreme conditions.

**REQUIRES MODELS 3612FRBFA, 6518.2FR & 6518FR PURCHASED SEPARATELY.** (Consult with the local authority having jurisdiction before installation in order to determine if any additional regulations or requirements may apply)

## OPTIONS

- Installation Aid: Model MTG.3600, mounting plate for 3600 series pedestals.

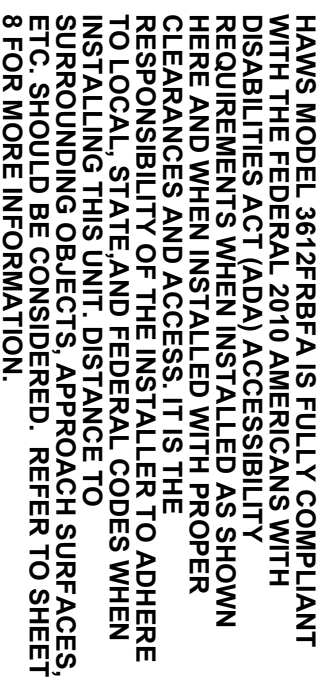
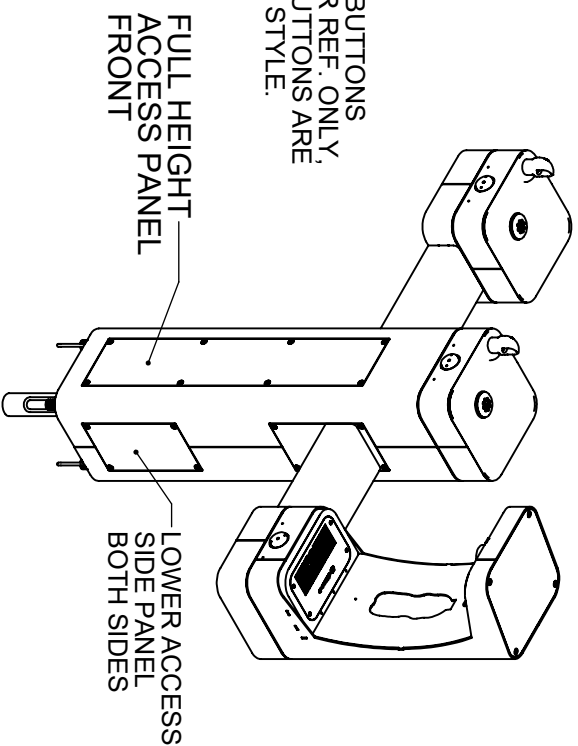
For more information, visit [www.hawsco.com](http://www.hawsco.com) or call (888) 640-4297.


## APPLICATIONS

The 3612FRBFA offers a solution for the changing needs of outdoor settings as well as outdoor wheelchair access, appealing to all users through accessibility and safety. This outdoor fountain is ideal in areas such as parks, schools, and other outdoor areas where hydration facilities are needed. Model meets all current Federal Regulations for the disabled including those in the Americans with Disabilities Act. Haws manufactures drinking fountains, faucets and electric water coolers to be lead-free by all known definitions including NSF/ ANSI/CAN 61-Section 9, NSF/ANSI/ CAN 372, California Proposition 65, and the Federal Safe Drinking Water Act. Product is compliant to California Health and Safety Code 116875 (AB 1953-2006), and 116876 (AB 100) "NSF/ANSI/CAN 61: Q ≤ 1".



- (NOTES CONTINUED ON SHEET 8)

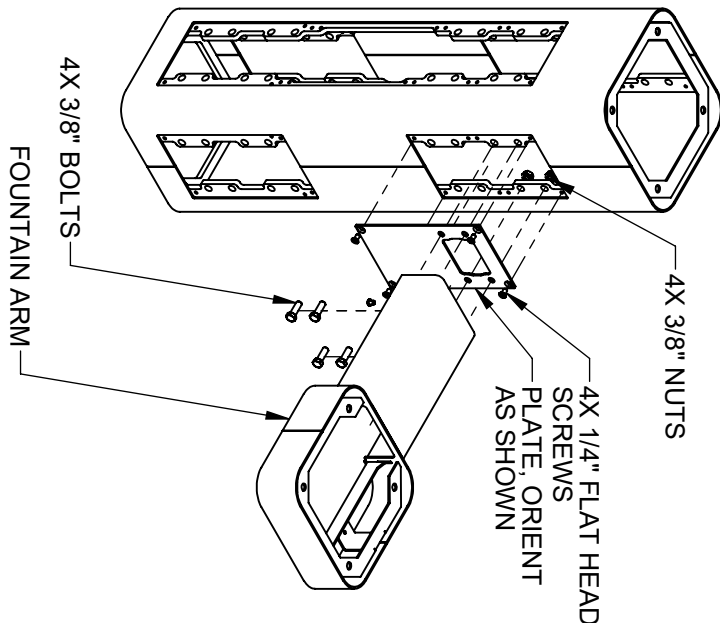
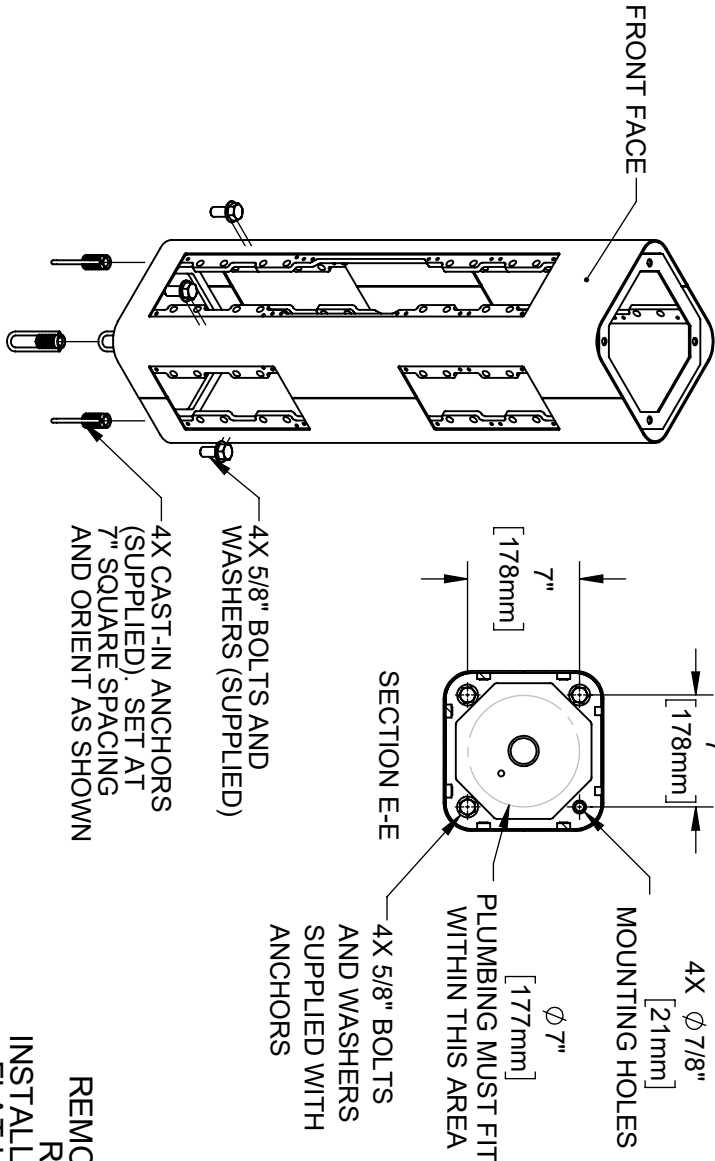
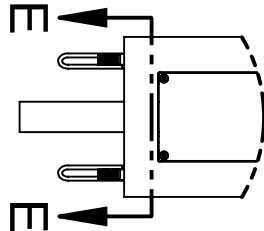
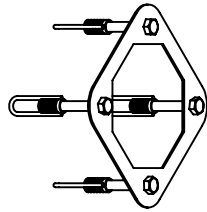


 <b>Hawms®</b> Since 1906		1455 KLEEPE LANE SPARKS, NEVADA 89431 (775) 359-4712 FAX (775) 359-7424 E-MAIL: <a href="mailto:HAWMS@HAWMSCO.COM">HAWMS@HAWMSCO.COM</a> WEBSITE: <a href="http://WWW.HAWMSCO.COM">WWW.HAWMSCO.COM</a>	
ECN: 5804	REV. ECN: 6229	BY: FV	PART NUMBER: 0510002057.D
DRAWN: DHP	DATE: 6/1/20	CHD: KM	REVISION: 3
APPROVED FV	DATE: 06/29/25	SCALE: 1/16	SHEET 1 OF 8
MODEL(S) 3612FRBFA		DRAWING TYPE:	INSTALLATION
		SIZE: A	

# INSTALLATION INSTRUCTIONS

## MODEL MTG.3600

(OPTIONAL)  
TEMPLATE FOR  
SPACING ANCHORS (INCLUDED)  
DURING CONCRETE  
POUR



**STEP 2**  
REMOVE BOTTOM COVER PLATES FROM ARMS BY  
REMOVING 3 1/4" BUTTON HEAD SCREWS.  
INSTALL ONE ARM ON RIGHT SIDE AS SHOWN. USE 1/4"  
FLAT HEAD SCREWS (SUPPLIED) TO INSTALL PLATE.  
USE 3/8" BOLTS AND NUTS (SUPPLIED) AND TORQUE TO  
18 FT-LBS TO INSTALL ARM.

**STEP 1**  
MOUNT PEDESTAL TO CONCRETE SLAB IN DESIRED  
ORIENTATION. SLAB TO BE 30" MINIMUM SQUARE AND  
6" MINIMUM THICK (NOT SUPPLIED). PLUMBING CAST  
IN CONCRETE MUST FIT IN 7" DIAMETER AREA CENTERED  
UNDER PEDESTAL LOCATION. FOR 3612FRBFA MODEL, SEE  
REQUIRED BURY VALVE (NOT SUPPLIED) INSTALLATION  
REQUIREMENTS ON SHEET 6.



Since 1906

1455 KLEPPE LANE

SPARKS, NEVADA 89431

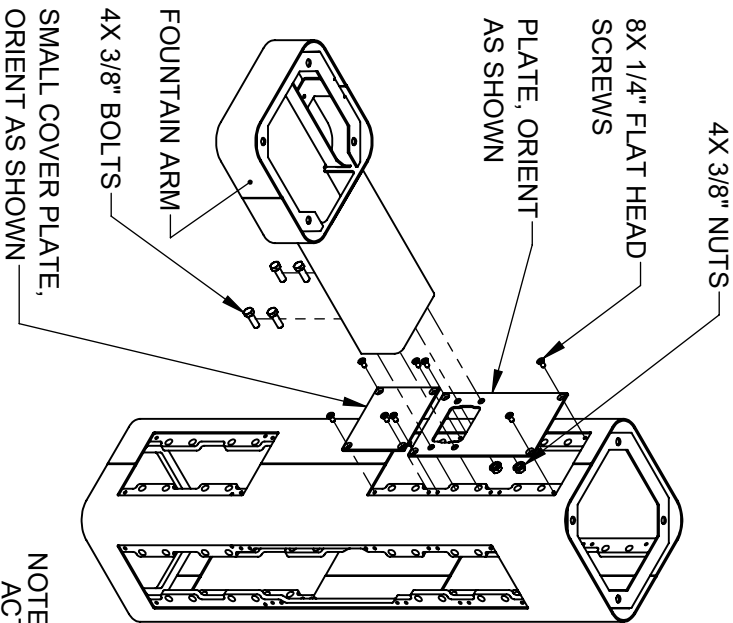
(775) 359-4712 FAX (775) 359-7424

E-MAIL: HAWS@HAWS.CO.COM

WEBSITE: WWW.HAWS.CO.COM

ENCL	REV. ENCL.	BY:	MODEL(S)	1455 KLEPPE LANE
5804	6228	F.V.	3612FRBFA	SPARKS, NEVADA 89431
DRAWING	DATE	CHK'D		(775) 359-4712 FAX (775) 359-7424
5804	6/1/25	KM		E-MAIL: HAWS@HAWS.CO.COM
APPROVED:	DATE	SCALE	DRAWING TYPE:	WEBSITE: WWW.HAWS.CO.COM
F.V.	05/09/25	1:12	INSTALLATION	PART NUMBER
				0510002057 D
				REVISION
				3

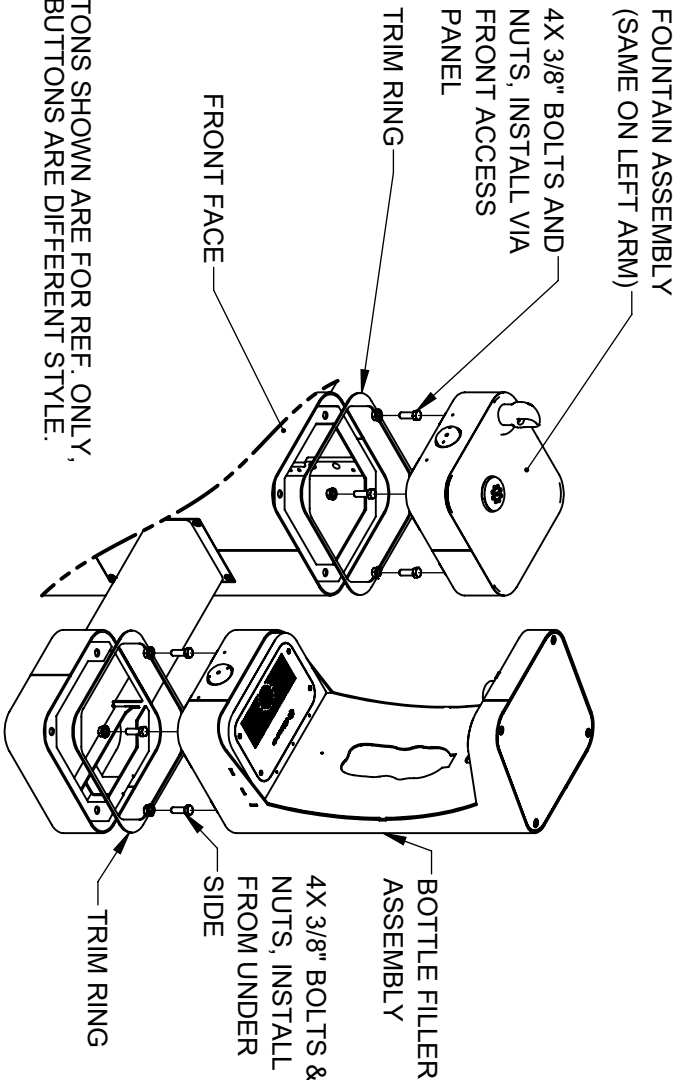
# INSTALLATION INSTRUCTIONS



NOTE: PUSH BUTTONS SHOWN ARE FOR REF. ONLY, ACTUAL PUSH BUTTONS ARE DIFFERENT STYLE.

## STEP 3

INSTALL REMAINING ARM ON LEFT SIDE AS SHOWN. USE 1/4" FLAT HEAD SCREWS (SUPPLIED) TO INSTALL PLATES. USE 3/8" BOLTS AND NUTS (SUPPLIED) AND TORQUE TO 18 FT-LBS TO INSTALL ARM.



## STEP 4

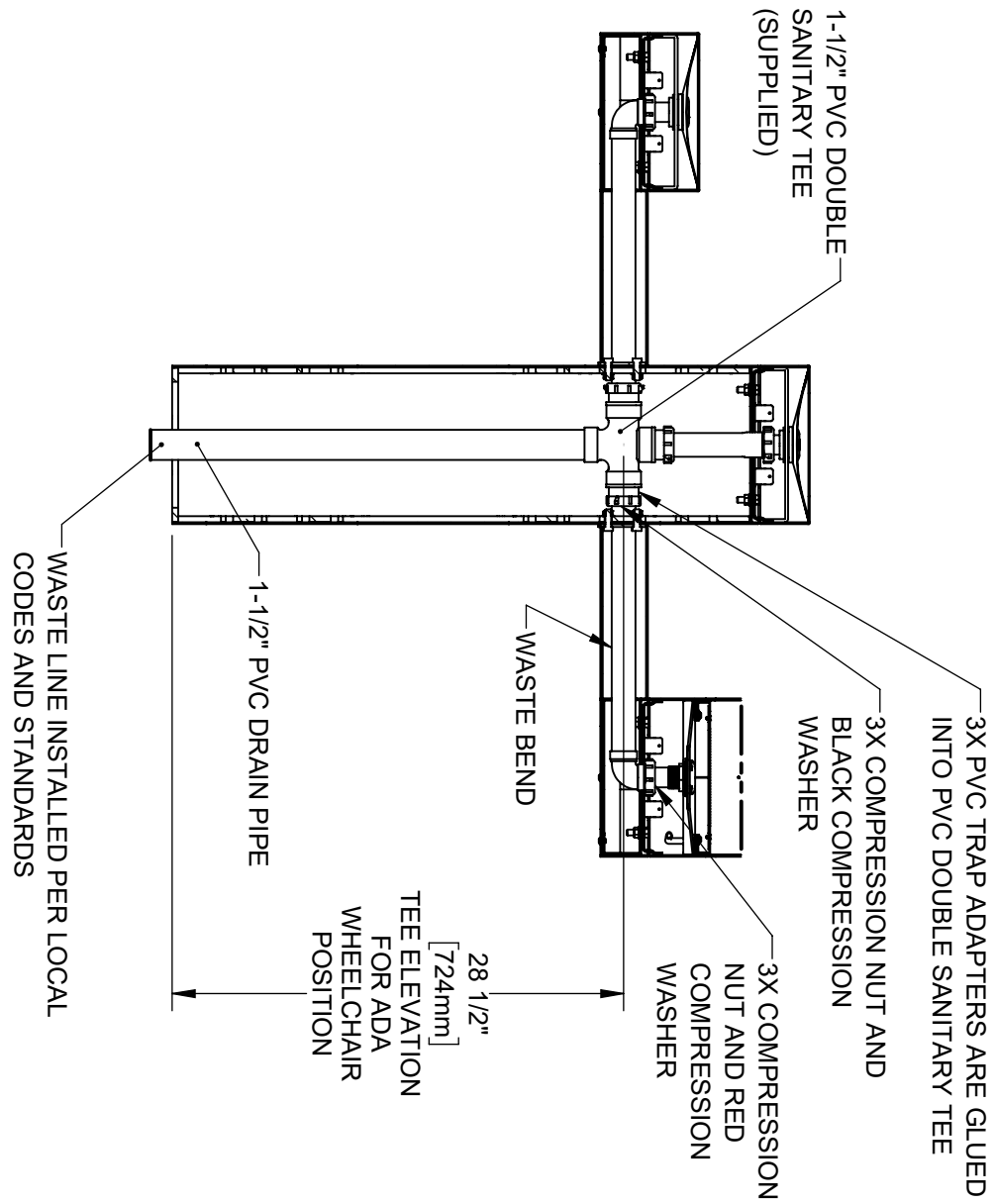
PLACE SQUARE TRIM RING ON BOTTOM OF BOTTLE FILLER AND PLACE BOTTLE FILLER ON TOP OF EITHER ARM, FACING THE FRONT. USE 3/8" BOLTS AND NUTS TO SECURE BOTTLE FILLER TO THE ARM. PLACE TRIM RING AND INSTALL FOUNTAIN ON PEDESTAL VIA THE FRONT ACCESS PANEL. PLACE TRIM RING AND INSTALL SECOND FOUNTAIN ON REMAINING ARM. CAREFULLY CENTER BOTTLE FILLER, FOUNTAINS, AND TRIM RINGS, THEN TORQUE BOLTS/NUTS TO 18 FT-LBS

**Haws**  
Since 1906

1455 KLEPPE LANE  
SPARKS, NEVADA 89431  
(775) 359-4712 FAX (775) 359-7424  
E-MAIL: HAWS@HAWS.CO.COM  
WEBSITE: WWW.HAWS.CO.COM

ECN: 5504	REV/ECN: 6226	BY: F.V.	MODEL(S): 3612FRBFA	PART NUMBER: 0510002057 D
DRAWING: 1002	DATE: 01/20	CHK'D: KM		REVISION: 3
APPROVED: F.V.	DATE: 05/09/25	SCALE: 1/12	DRAWING TYPE: INSTALLATION	SHEET 3 OF 8

INSTALLATION INSTRUCTIONS



**STEP 5**

INSTALL SUPPLIED DRAIN COMPONENTS AS SHOWN. RED COMPRESSION WASHERS ADAPT FROM 1-1/4" TO 1-1/2" AT EACH DRAIN TAIL PIECE. BLACK COMPRESSION WASHERS ARE USED IN TRAP ADAPTERS AT TEE(S). USE APPROPRIATE PVC CEMENT TO MAKE SOLVENT CEMENT CONNECTIONS. TRIM WASTE BEND AND/OR TAIL PIECE LENGTH IF REQUIRED. NOTE THAT EXTRA PARTS MAY BE INCLUDED TO FACILITATE OTHER CONFIGURATIONS OF THIS FOUNTAIN.

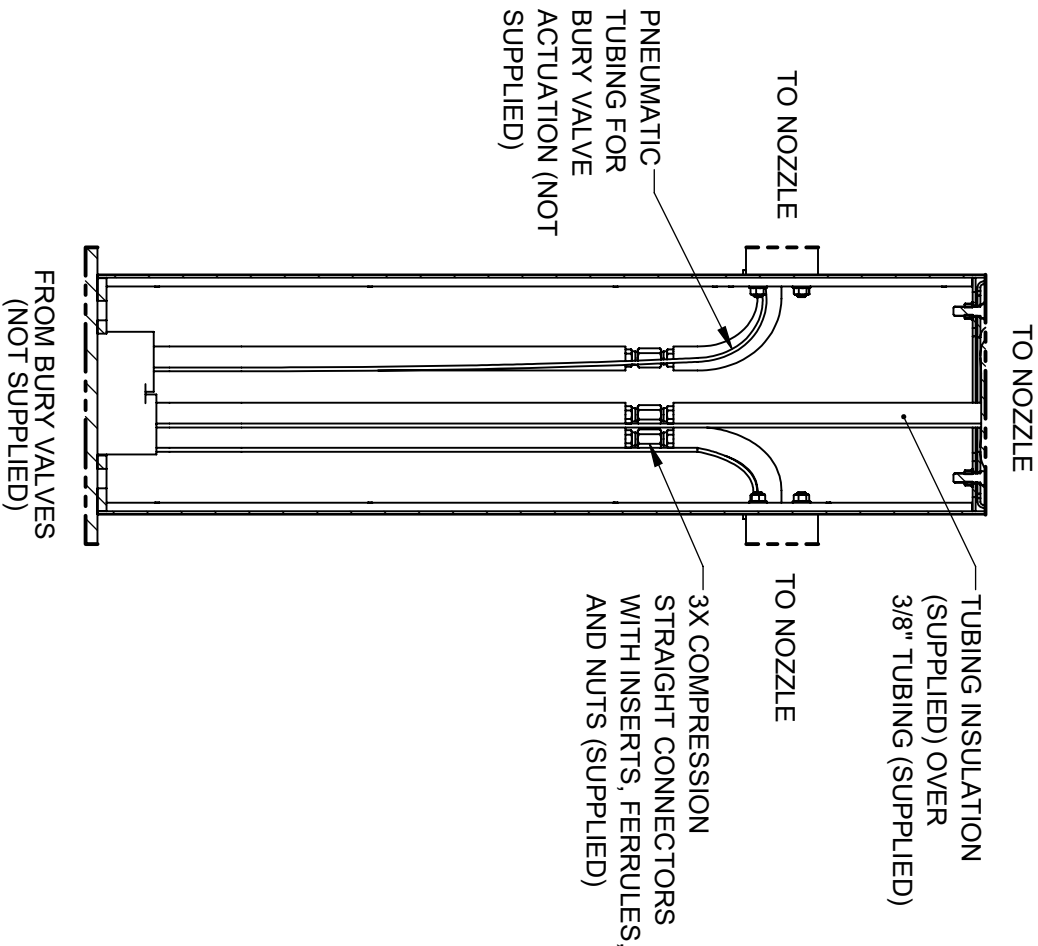


**Haws**  
Since 1906

1455 KLEPPE LANE  
SPARKS, NEVADA 89431  
(775) 359-4712 FAX (775) 359-7424  
E-MAIL: HAWS@HAWSCO.COM  
WEBSITE: WWW.HAWSCO.COM

ENCL	REV/ENCL	BY	MODEL(S)
5504	6/28	F.V.	3612FRBFA
DRAWING	DATE	CHK'D	
5504	6/28	KMI	
APPROVED	DATE	SCALE	1:12
F.V.	06/09/25	DRAWING TYPE	INSTALLATION
		SIZE	A
		SHEET	4 OF 8
		REVISION	3
		PART NUMBER	0510002057 D

INSTALLATION INSTRUCTIONS

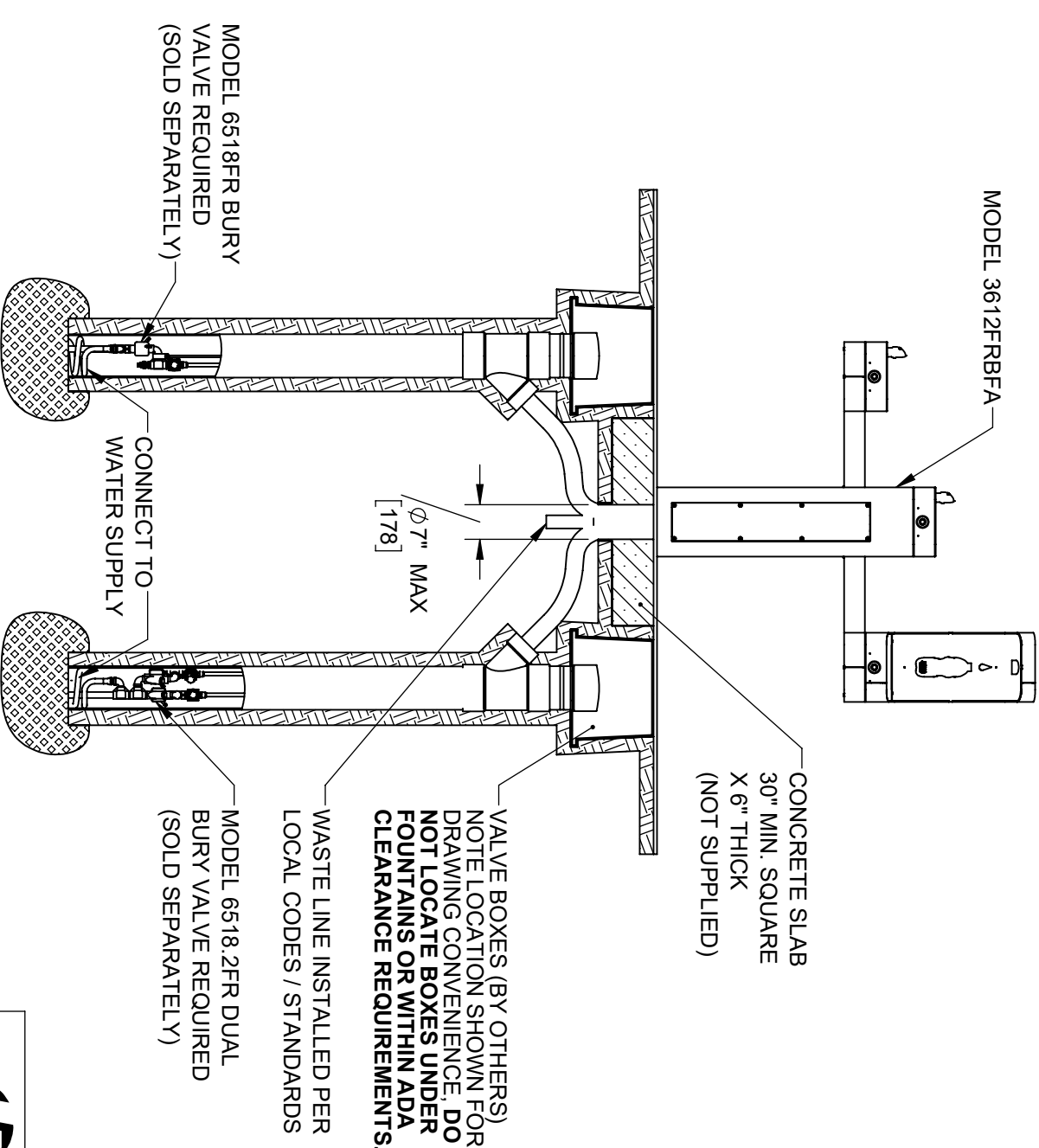


3612FRBFA SUPPLY PLUMBING\*

\* SEE NEXT SHEET OF THIS DRAWING FOR MORE INFORMATION ON INSTALLING BURY VALVES WITH THIS MODEL.

**STEP 6**  
COMPLETE WATER SUPPLY PLUMBING AS SHOWN. OPEN SUPPLY VALVE(S) AND TEST. REPLACE ARM BOTTOM PLATES AND PEDESTAL ACCESS PLATES. BURY VALVES (NOT SUPPLIED) ARE REQUIRED FOR 3612FRBFA INSTALLATION. REFER TO BURY VALVE OPERATION AND MAINTENANCE MANUAL FOR ADDITIONAL INFORMATION.

		1455 KLEPPE LANE SPARKS, NEVADA 89431 (775) 359-4712 FAX (775) 359-7424 E-MAIL: HAWS@HAWSO.COM WEBSITE: WWW.HAWSO.COM	
ENCL	REV/ENCL	BY	MODEL(S)
5804	6228	FV	3612FRBFA
DRAWING	DATE	CHKD	
5804	6/1/25	KM	
APPROVED	DATE	SCALE	DRAWING TYPE
FV	06/09/25	1:8	INSTALLATION
		SIZE	SHEET 5 OF 8
		A	3
		PART NUMBER 0510002057 D	
		REVISION 3	



INSTALL BURY VALVES IN ACCORDANCE  
WITH MANUFACTURER'S INSTRUCTIONS.  
INSTALLATION MUST COMPLY WITH  
LOCAL CODES / STANDARDS, INCLUDING  
ADA CODES IF APPLICABLE.



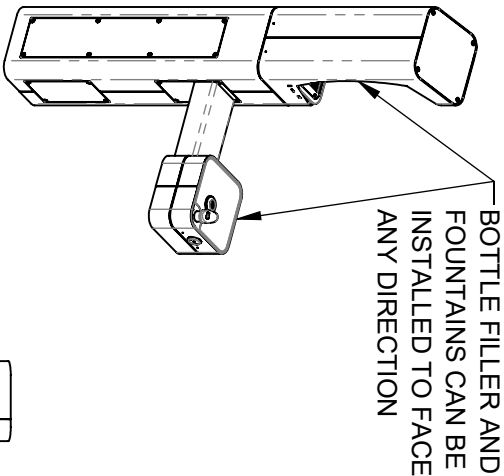
Since 1906

1455 KLEPPE LANE  
SPARKS, NEVADA 89431  
(775) 359-4712 FAX (775) 359-7424  
E-MAIL: HAWS@HAWS.CO.COM  
WEBSITE: WWW.HAWS.CO.COM

ECN:	REV/ECN:	BY:	MODEL(S)	PART NUMBER
5804	6226	F.V.	3612FRBFA	0510002057 D
DRAWN:	DATE:	CHK'D:		REVISION
5804	8/1/25	KML		3
APPROVED:	DATE:	SCALE:	DRAWING TYPE:	INSTALLATION
F.V.	05/30/25	1/24		SIZE: A
				SHEET 6 OF 8

NOTES ON OPTIONAL CONFIGURATIONS

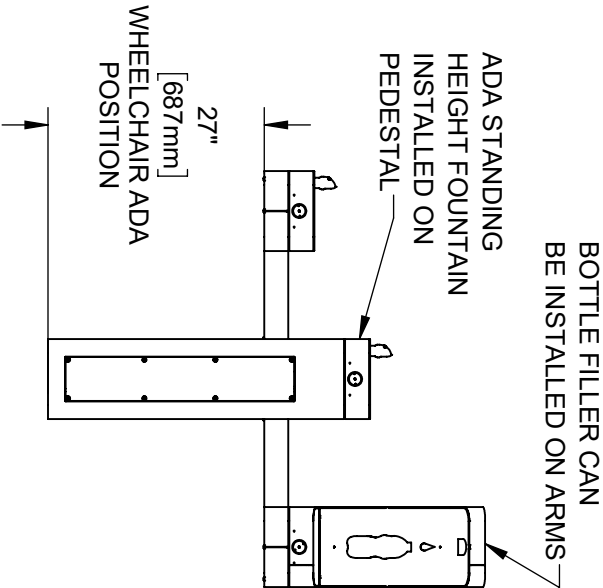
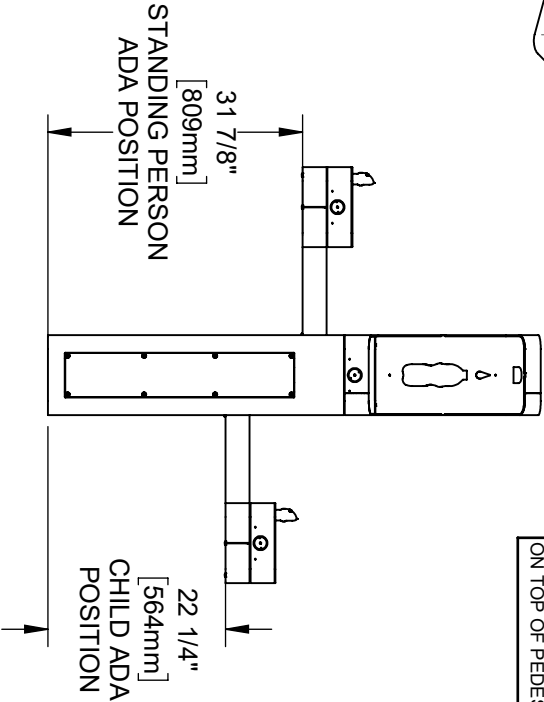
HAWES 3600FR SERIES OUTDOOR FOUNTAINS ARE MODULAR AND CAN BE ASSEMBLED AND CONFIGURED MANY DIFFERENT WAYS. DISPLAYED HERE ARE A FEW EXAMPLES. CONFIGURATIONS OTHER THAN THAT SHOWN IN THE INSTALLATION INSTRUCTIONS FOR THE 3612FRBFA MAY AFFECT COMPLIANCE WITH ADA REGULATIONS. IT IS THE RESPONSIBILITY OF THE INSTALLER TO UNDERSTAND LOCAL, STATE, AND FEDERAL REGULATIONS AS APPLICABLE IF INSTALLING THIS FOUNTAIN IN CONFIGURATIONS OTHER THAN THAT INDICATED ON SHEET 1 (PAGE 6 OF 13).



ADA ARM HEIGHT POSITION OPTIONS				
	LEFT SIDE*	RIGHT SIDE*	ARM HEIGHT (LOWER EDGE)	BUBBLER NOZZLE HEIGHT
STANDING ADA	YES (STD)	NO	31-7/8 [809 mm]	39-3/8 [999 mm]**
WHEELCHAIR ADA	YES	Yes (STD)	27 [687 mm]	34-5/8 [878 mm]
CHILD ADA	YES	YES	22-1/4 [566 mm]	29-7/8 [757 mm]

\* RIGHT AND LEFT CAN BE REVERSED IF PEDESTAL IS ROTATED 180°.

\*\*NOZZLE HEIGHT IS 41-1/2" WHEN FOUNTAIN IS INSTALLED ON TOP OF PEDESTAL.



NOTE: PUSH BUTTONS SHOWN ARE FOR REF. ONLY, ACTUAL PUSH BUTTONS ARE DIFFERENT STYLE.



1455 KLEPPE LANE  
SPARKS, NEVADA 89431  
(775) 359-4712 FAX (775) 359-7424  
E-MAIL: HAWES@HAWESCO.COM  
WEBSITE: WWW.HAWESCO.COM

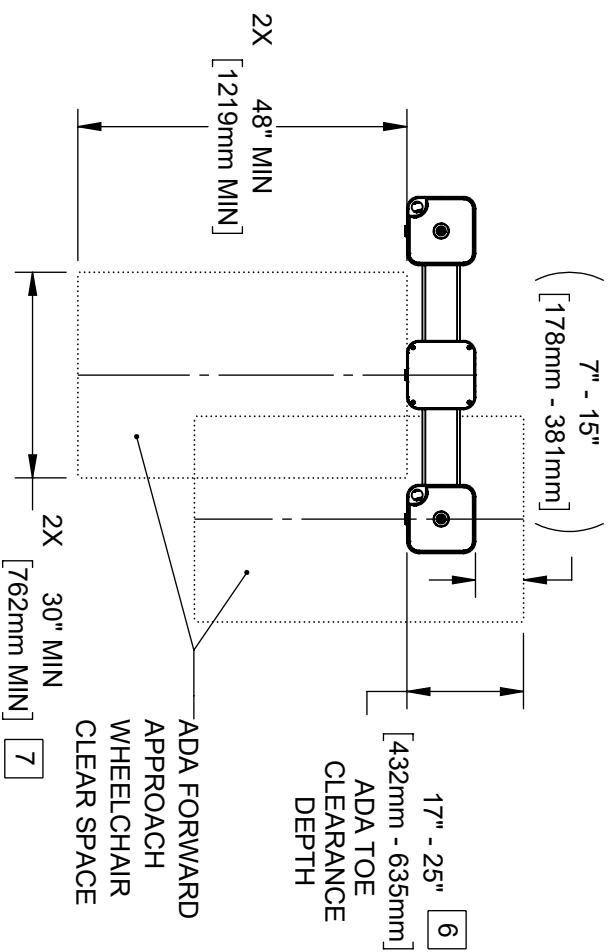
Since 1906

ENCL	REV/ENCL	BY:	MODEL(S)	PART NUMBER
5804	6226	F.V.	3612FRBFA	0510002057 D
DRAWING	DATE	CHK'D		REVISION
3612FRBFA	01/02/25	KMI		3
APPROVED:	DATE	SCALE	DRAWING TYPE:	SIZE
F.V.	05/09/25	1/24	INSTALLATION	A



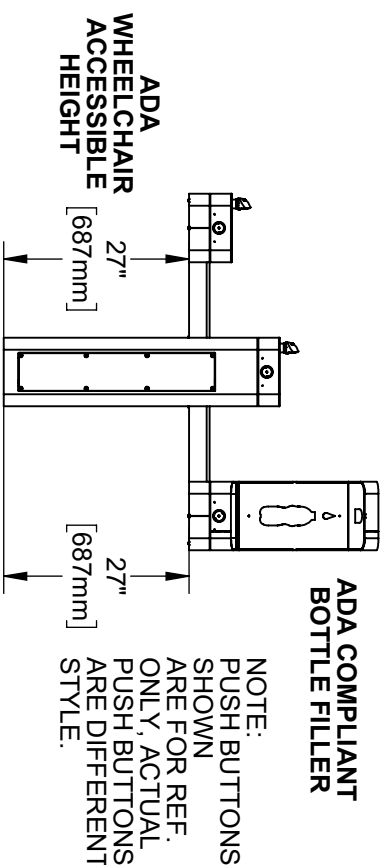
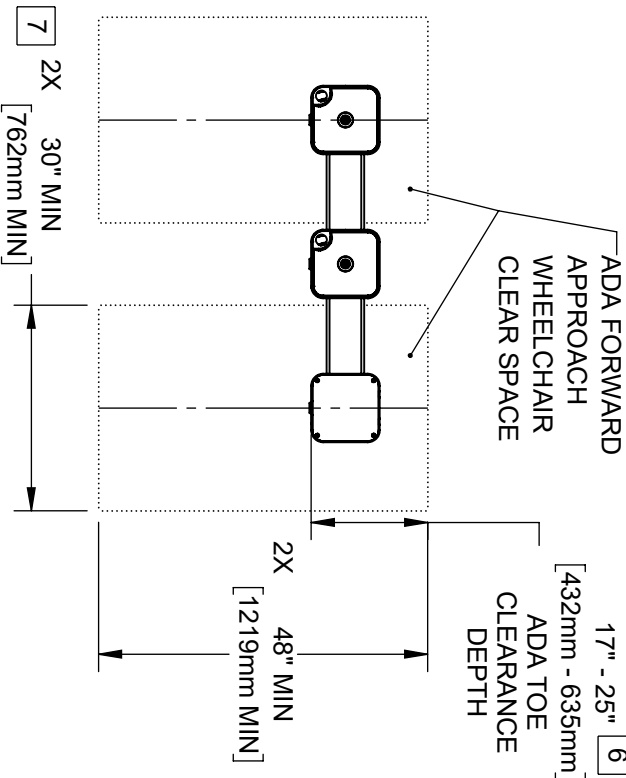
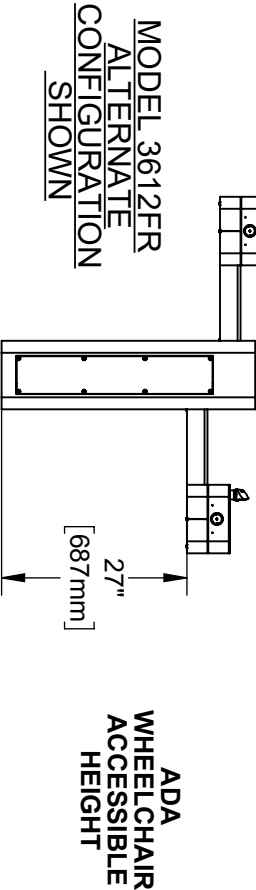
NOTES (CONTINUED FROM SHEET 1):

- 4. CLEAR FLOOR SPACES APPLY FOR ALL MODELS WITH A DRINKING FOUNTAIN OR BOTTLE FILLER INSTALLED AT ADA WHEELCHAIR ACCESSIBLE HEIGHT AND PEDESTAL MOUNTED BOTTLE FILLEERS.
- 5. ORIENTATION OF CLEAR FLOOR SPACE IS DEPENDENT ON THE FOUNTAIN OR BOTTLE FILLER ORIENTATION.
- 6. SOME CALIFORNIA JURISDICTIONS MAY REQUIRE 18" MIN.
- 7. SOME CALIFORNIA JURISDICTIONS MAY REQUIRE 32" MIN.
- 8. REFER TO ADA STANDARDS AND/OR YOUR LOCAL BUILDING CODE FOR CLEAR SPACE GUIDELINES FOR PARALLEL APPROACH.




**ADA COMPLIANT BOTTLE FILLER**

NOTE: PUSH BUTTONS SHOWN ARE FOR REF. ONLY; ACTUAL PUSH BUTTONS ARE DIFFERENT STYLE.



MODEL 3612FRBFA CONFIGURATION SHOWN

THESE HAWS MODELS ARE FULLY COMPLIANT WITH THE FEDERAL 2010 AMERICANS WITH DISABILITIES ACT (ADA) ACCESSIBILITY REQUIREMENTS WHEN INSTALLED AS SHOWN HERE AND WHEN INSTALLED WITH PROPER CLEARANCES AND ACCESS. IT IS THE RESPONSIBILITY OF THE INSTALLER TO ADHERE TO LOCAL, STATE, AND FEDERAL CODES WHEN INSTALLING THIS UNIT. DISTANCE TO SURROUNDING OBJECTS, APPROACH SURFACES, ETC. SHOULD BE CONSIDERED.

		1455 KLEPPE LANE SPARKS, NEVADA 89431 (775) 359-4712 FAX (775) 359-7424 E-MAIL: HAWS@HAWS.CO.COM WEBSITE: WWW.HAWS.CO.COM	
ENCL	REV. ECL	BY	MODEL(S)
5804	6226	FV	3612FRBFA
DRAWN	DATE	CHKD	
5804	6/1/20	KML	
APPROVED	DATE	SCALE	DRAWING TYPE
FV	06/09/25	1/28	INSTALLATION
		SIZE	SHEET 8 OF 8
		A	3
		PART NUMBER 0510002057 D	
		REVISION	