



Haws[®]

model **6252HST**

Drinking Fountain/Electric Water Cooler Parts & Access.

FEATURES & BENEFITS

OPTIONS

To see all options for this model, visit www.hawSCO.com



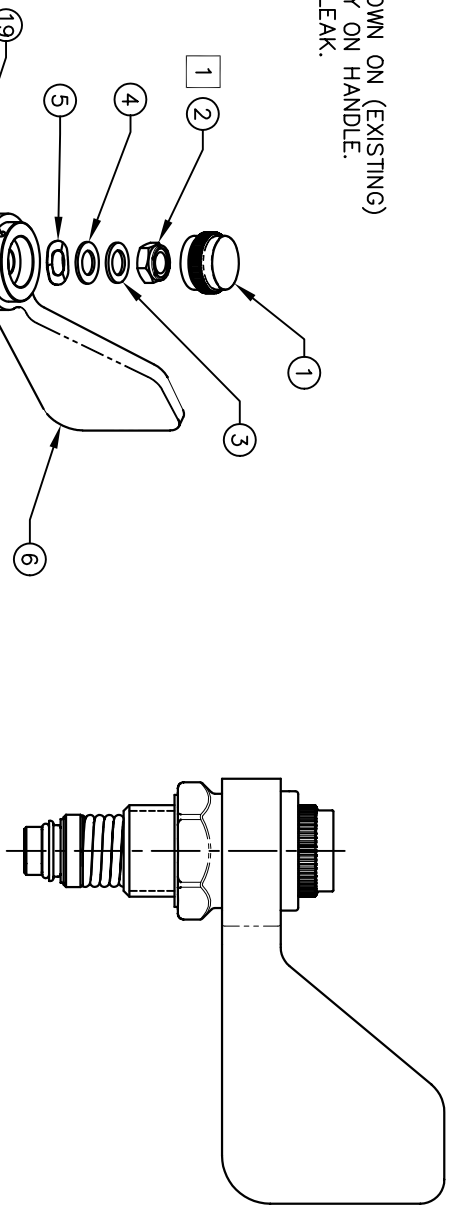
SPECIFICATIONS

Model 6252HST is a handle and stem assembly for the 6252EHLF valve and shall include an extended lever handle and handle cap. Completely assembled with all supporting parts, and ready to install on valves 2005 and newer.

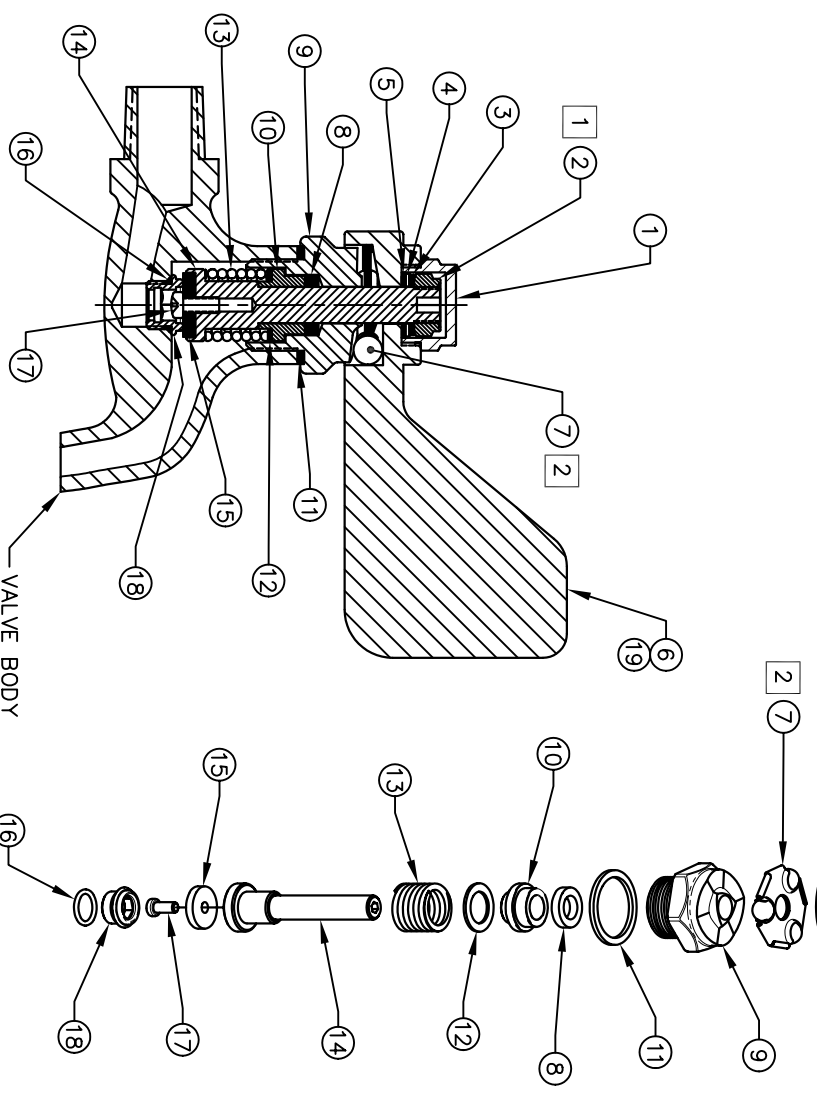
APPLICATIONS

NOTES:

- 1 IF NEEDED WHEN RE-ASSEMBLING VALVE TIGHTEN DOWN ON (EXISTING) 3/8"-24 LOCK NUT UNTIL ACHIEVING A SLIGHT PLAY ON HANDLE. CAUTION: DO NOT OVER-TIGHTEN NUT. VALVE WILL LEAK.
- 2 LUBRICATE WITH GREASE BEFORE ASSEMBLY.



ASSEMBLED VIEW



VALVE BODY SHOWN FOR REFERENCE ONLY

FOR MODEL:
6252EHLF

EXPLODED VIEW

ITEM	PART NO.	DESCRIPTION
19	0005063885	SCREW, SET 6-32 UNC
18	0005208682	SEAT F/5830HST
17	0005064870	SCREW, 8-32 X 3/8"
16	0003981050	O-RING, .426 X .070 WALL
15	0006634576	WASHER, .660 X .170 X .125
14	0005532750	STEM, VALVE
13	0005425392	SPRING, .73 X 1.25 X 2.50mm
12	0006634380	WASHER, .75 X .494 X .040
11	0006634184	WASHER, 1.165 X .951 X .073
10	0002583484	GLAND
9	0000356160	BONNET, 6252HST UNPLATED
8	0002582902	GLAND PACKING
7	0000192993	BEARING SET
6	0002689139	HANDLE, LEVER F/6252EHLF
5	0006626653	WASHER, WAVE 5/16"
4	0006633792	WASHER, .650 X .380 X .040
3	0006633596	WASHER, .625 X .390 X .048
2	0003801119	NUT, 3/8-24 UNF NYLON LOCK
1	0001465960	INDEX CAP, UNPLATED

Haus Corporation
 1455 Kleppe Ln, Sparks NY, 89431
 Phone: 775-359-4712 Fax: 775-359-7424
 Hows Ag Boehweg 3 CH-3401 Burgdorf Switzerland
 Hows Mfg Pte Ltd 74 Sungai Kadut Loop Singapore 729531
 e-mail: Hows@hdvscoc.com Website: www.hdvscoc.com

MODEL(S): 6252HST HANDLE/STEM ASSY
 INFO FAX DOC # 26252478
 SCALE: N/A DRAWING TYPE: INSTALLATION/FAABACK

FOR NO. ENGINEER: JLV
 DRAWING NO. 15247A00
 DATE: 2/23/06
 APPROVER: JLV

PART NUMBER: 0002090003
 DRAWING NUMBER: 15247A00
 SHEET: 1 OF 1