

FEATURES & BENEFITS

VALVES

Valve is designed so the full flow of fluid remains on with a simple push of a stainless steel flag. Unit also comes equipped with a stainless steel ball and stem to provide added protection against corrosion and breakage. Self-draining valve assembly is designed for installation behind the mounting wall with a maximum wall thickness of 15" (38.1 cm), in a non-freezing environment, so the unit maintains full emergency capability in freezing conditions.

QUALITY CONTROL

Valve assembly is pre-built for reduced installation time and an added peace of mind for the installer.

SAFETY

8" x 10-3/4" (20.3 x 27.3 cm) universal emergency sign make the unit easily detected in an emergency. Test card to record weekly checks helps maintain the unit best working quality.

SHOWER HEAD

AXION MSRT[™] ABS plastic drench showerhead uses a hydrodynamic design to give equal distribution of water throughout the entire footprint of flow.

OPTIONS

- Showerhead: Model SP829SS, AXION MSRT[™] stainless steel drench shower head with integral 20 gpm (75.7 L) flow control.
- Alarm: Model 9001, 120 VAC emergency alarm and light system. Buzzer and flashing light are activated by a double pole, double throw flow switch.
- Tempered Water Blending Valves: Model 9201E Emergency Valve thermostatically mixes hot and cold water to provide a safe fluid supply for emergency showers and eyewash equipment, with a flow rate of 31 gpm (117.3 L).
- Tempered Water Blending Valves: Model 9201H Lead-free Emergency Valve thermostatically mixes hot and cold water to provide a safe fluid supply for emergency showers and eyewash equipment, with a flow rate of 31 gpm (117.3 L).

To see all options for this model, visit www.hawsco.com



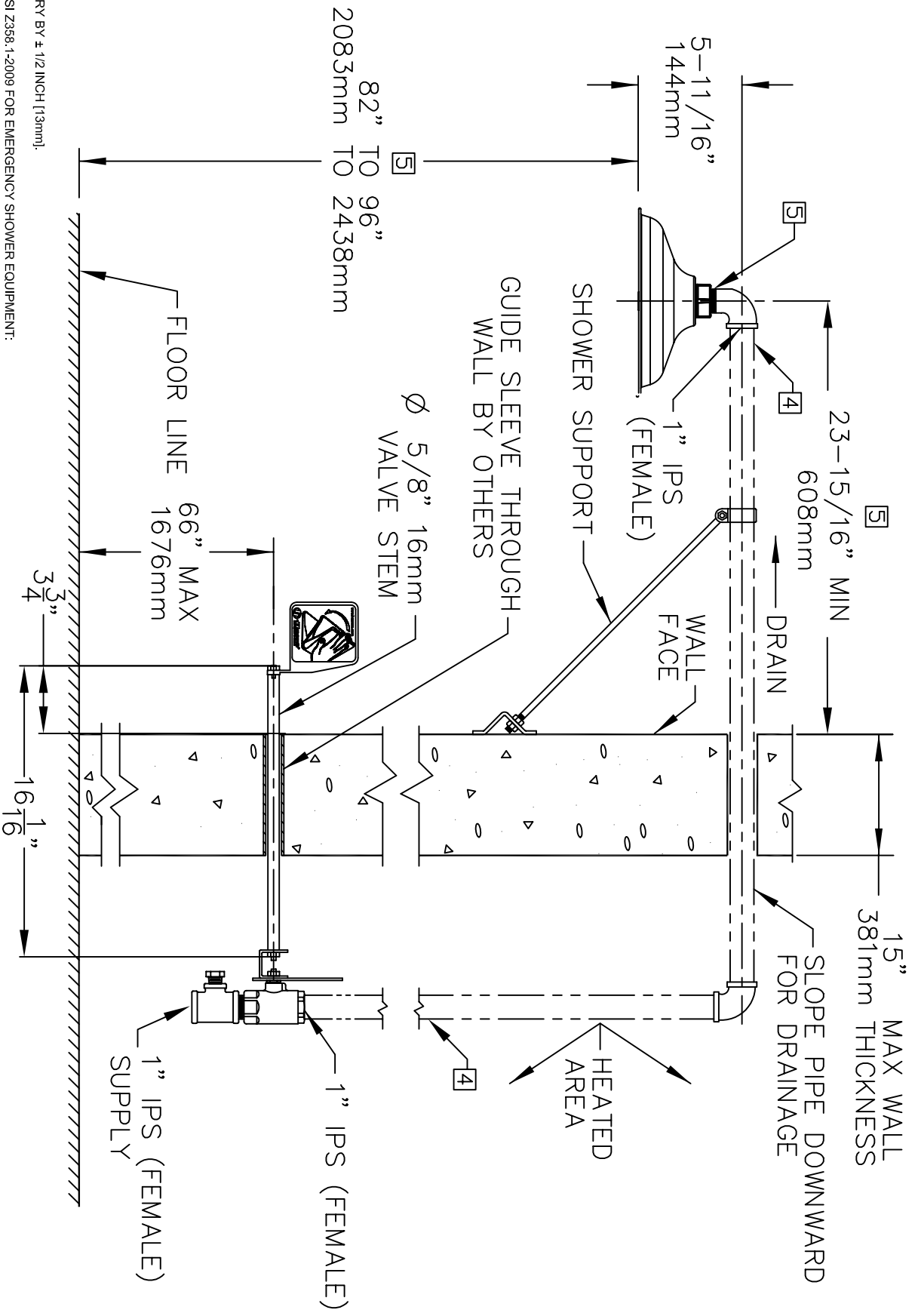
SPECIFICATIONS

Model 8111FP freeze-resistant drench shower shall also include the AXION MSRT[™] hydrodynamic designed ABS plastic showerhead with flow control, and brass stay-open ball valve equipped with stem and stem extension for 15" (38.1 cm) max wall thickness. Unit shall also include a stainless steel push flag, universal sign, and 1" IPS supply.

APPLICATIONS

Where the body of any person may be exposed to injurious or corrosive materials, suitable facilities for quick drenching and cleansing of the body shall be provided within the work area for immediate emergency use. Emergency deluge showers shall be in unobstructed and accessible locations that require no more than 10 seconds for the injured person to reach.

Model 8111FP is certified by CSA to meet the ANSI Z358.1 Standard for Emergency Eyewash and Shower Equipment.



NOTES:

1. DIMENSIONS MAY VARY BY ± 1/2 INCH (13mm).
2. TO COMPLY WITH ANSI Z358.1-2009 FOR EMERGENCY SHOWER EQUIPMENT:
 - UNIT SHALL BE INSTALLED IN ACCORDANCE WITH MANUFACTURER'S INSTRUCTIONS AND ACCEPTABLE PLUMBING PRACTICES.
 - SHOWER SHALL BE POSITIONED SO THAT SHOWER HEAD IS NOT LESS THAN 208.3 CM (82 IN.) NOR MORE THAN 243.8 CM (96 IN.) FROM SURFACE ON WHICH USER STANDS.
 - SHOWER SPRAY PATTERN SHALL HAVE A MINIMUM DIAMETER OF 50.8 CM (20 IN.) AT 152.4 CM (60 IN.) ABOVE SURFACE ON WHICH USER STANDS, AND CENTER OF SPRAY PATTERN SHALL BE LOCATED AT LEAST 40.6 CM (16 IN.) FROM ANY OBSTRUCTION.

3. FOLLOWING THESE DIMENSIONS WILL AUTOMATICALLY PROVIDE ADHERENCE TO ANSI REQUIREMENTS STATED ABOVE.
4. 1" IPS GALVANIZED PIPE NOT SUPPLIED.
5. DO NOT USE REGULAR PIPE SEALANT. IF NECESSARY USE DOW CORNING 832 SEALANT PLACING 5 SMALL BEADS ON THE MALE THREADS, JUST ABOVE THE FIRST THREAD.

Haws Corporation

1455 KLEPPE LANE
SPARKS, NEVADA 89431
(775) 359-4712 FAX (775) 359-7424
E-MAIL: HAWMS@HAWMSCO.COM
WEBSITE: WWW.HAWMSCO.COM

EQUIP. NO.	TENDER'S PER.	DATE	REV.
8111FP	8111FP	05/23/01	1
DATE	CHECK	SCALE	DRAWING TYPE
05/23/01		AS SHOWN	INSTALLATION/BACK
MODELS: WALL MOUNTED FREEZE RESISTANT		DRAWING NO. 09438A00	
8111FP DRENCH SHOWER		SHEET 1 OF 1	
INFO FAX DOC #: 2811137		REV. 112	