



# Haws®

ePOD™ Indoor/Outdoor Heated Shower and Eye/Face Wash Booth

## model 8730

## FEATURES & BENEFITS

### STANDARDIZED PLATFORM

Offering a standardized line of water tempering solutions providing shorter lead times, advanced compliance, cost efficiencies, and customizable configuration options.

### VISUAL PLACEMENT

High visibility safety green powder coating, internal illumination and an optional external booth illumination package announces to all in the immediate area there is safety equipment nearby.

### CONSTRUCTION

Galvanized pipe, bronze valves, and aluminum structural members provide superior defense in a highly corrosive environment, and bottom forklift slots for easy site placement.

### VALVES

Eye/face wash valve is designed to make the flushing of contaminants occur with the simple push of a stainless steel flag. Shower ball valve is designed to make the flushing of fluid occur with the pull of a triangular lever. Both are made of bronze.

### AXION TECHNOLOGY

AXION® MSR eye/face wash head uses an inverted directional laminar flow to sweep contaminants away from the vulnerable nasal cavity, and hydrodynamic shower head design for even flow throughout the flow pattern.

### EXTREME WEATHER OPTIONS

Select from three Environmental packages including a Northern Package with protection to -20° F, an Arctic Package with protection to -50° F, and a Desert Package for extreme heat to +120° F

## OPTIONS

Optional equipment to accommodate virtually any specific need includes:

- Stainless steel valves and/or piping
- Tempering packages including instantaneous electrical or an industry exclusive steam heater
- Alarm packages
- Electrical packages including 208V, 240V, 480V and 600V options
- Freeze proof shower and eyewash
- Safety first aid kit and stretcher

For more information, visit [www.hawsc.com](http://www.hawsc.com) or call (888) 640-4297.



## SPECIFICATIONS

Model 8730 ePOD™ enclosed shower and eye/face wash shall include a completely enclosed 5' x 5' (1.52 x 1.52m) all-weather, aluminum structure covered with safety green chemical and UV resistant polyester based powder coating which provides an optional operating temperature range of -50° to 120° F (-45.5° to 48.9° C). It shall include spring-loaded, self-closing shower doors, is trimmed with large directional arrows, universal shower/eyewash sign, fiberglass floor grate, and 3" IPS inside caulk drain. There is a 20 gpm (75.7 L) AXION® hydrodynamic showerhead, an eye/face wash that features the medically acclaimed AXION® MSR eye/face wash head assembly. Chrome-plated brass stay-open shower and eye/face ball valves equipped with stainless steel ball and stem, and can be protected by scald and freeze bleed valves. The internal booth temperature can be maintained by an optional space heater. The available alarm system is proximity switch activated, and provides local audible and visible alarms. Combination shower and eyewash is certified by CSA to meet the ANSI Z358.1 Standard for Emergency Eyewash and Shower Equipment. For the electrical certification, the system is certified by accredited Certification Body.

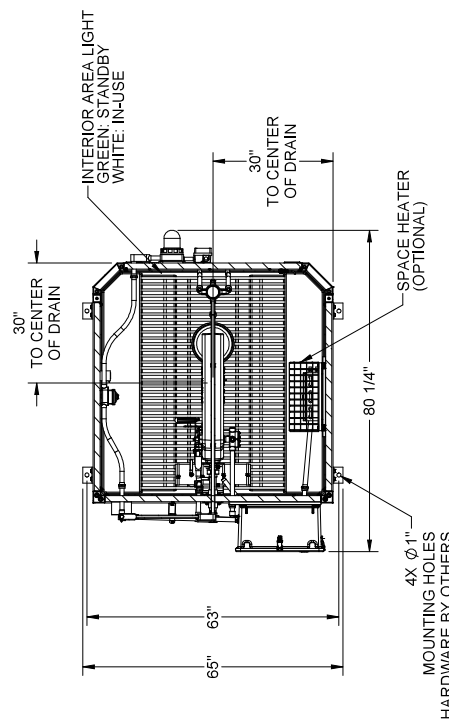
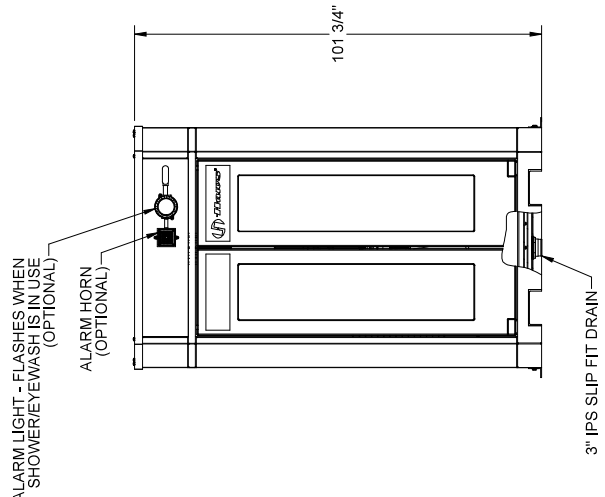
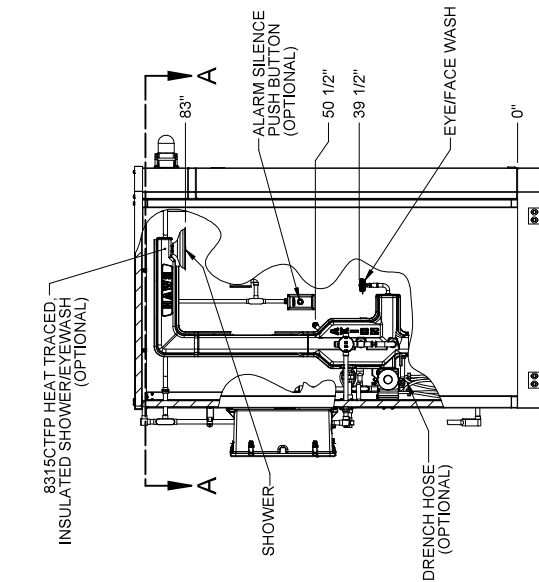
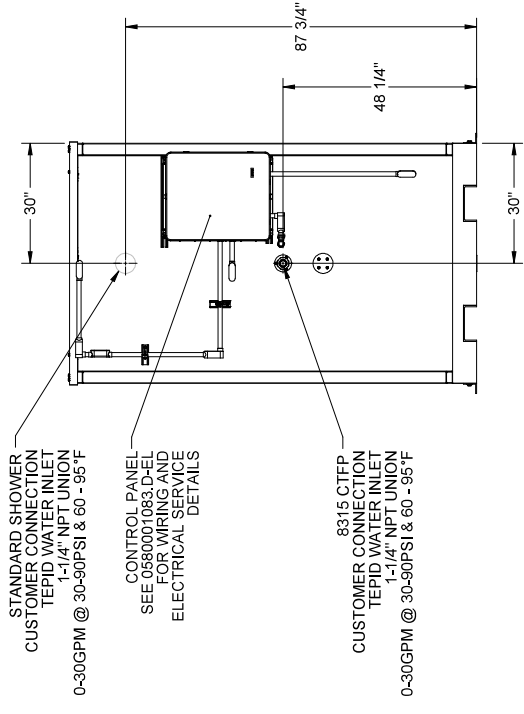
## APPLICATIONS

Perfect for Petro-chemical, bio-diesel, and ethanol processing facilities, and other remote outdoor locations where drench showers with very cold water would pose a health hazard to employees and a liability to employers, or in shower areas exposed to cold air and wind where showering with very cold water could discourage proper flushing time.




NOTES:

1. DIMENSIONS IN INCHES
2. ALL TOLERANCES:  $\pm 1/2"$
3. ESTIMATED WEIGHT:  
DRY: 1200 LBS  
WET: 1220 LBS
5. AREA CLASSIFICATION: ORDINARY
6. AVAILABLE AMBIENT TEMPERATURE RANGE:  $-50^{\circ}\text{F}$  -  $120^{\circ}\text{F}$
7. RATINGS: CONFIGURABLE WITH TYPE 4/4X JUNCTION BOX FOR INDOOR OR OUTDOOR LOCATION
8. NOT ALL FEATURES ARE STANDARD



SECTION A-A

CUSTOMER INFO TAG #				1455 ALLESTREE LANE SPARKS, NEVADA 89431 USA	
JOB NUMBER		TITLE		OUTDOOR HEATED SHOWER AND EYEFACE WASH BOOTH	
DRAWN BY:		NOTE OF PROPRIETARY INFORMATION HAWKS CORPORATION MAKES NO WARRANTY, REPRESENTATION OR AGREEMENT, EXPRESS OR IMPLIED, IN CONNECTION WITH THE DESIGN OR CONSTRUCTION OF ANY PROJECT, OR IN CONNECTION WITH THE FURNISHING OF ANY SERVICES OR ITEMS IN CONNECTION WITH THE PROJECT, OR IN CONNECTION WITH THE PERFORMANCE OF ANY OBLIGATION OF ANY KIND.			
DRAWN DATE:					
CHECKED BY:	DB				
CHECKED DATE:	06/22/20				
APPROVED BY:	DB	SCALE: SEE PART 110		SHEET 1 OF 1	
APPROVAL DATE:	06/22/20	0580001083.D-GA		REV.	

THE ATTACHED DESIGNS ARE CONSIDERED TRADE SECRETS  
AND POTENTIALLY PATENTABLE. IN ACCORDANCE WITH  
CONFIDENTIALITY AND NON-DISCLOSURE AGREEMENT,  
THESE DESIGNS IN ACTUAL OR CONCEPTUAL FORMS CANNOT  
BE DISCLOSED, REPRODUCED, OR USED WITHOUT HAWS'  
EXPRESS WRITTEN CONSENT.