



model 1920  
Bottle Filler

## FEATURES & BENEFITS

### PUSH BUTTON

With its patented stainless steel, push-button activated valve assembly which allows for front access stream adjustment as well as cartridge and strainer access, this bottle filler offers 100% lead free waterways. The valve works at an operating pressure range of 30 to 90 psi (2.1 to 6.2 bar).

### CONSTRUCTION

Unit is made of 14 gauge Type 304 stainless steel with a satin finish that resists stains and corrosion, and has soft rounded corners. Unit features vandal-resistant bottom plate and dispensing nozzle.

### LAMINAR FLOW

Adjustable, splash-free, 1 gpm (3.78 L) laminar water flow.

### EFFICIENT & FLEXIBLE INSTALLATION

Unit is designed for retrofit or new construction applications. No drain required for mounting over existing drinking fountain.

### DURABLE BUILD

Good for indoor or outdoor applications (in non-freezing areas). Made with 100% Stainless Steel for vandal resistance.

### MOUNTING OPTIONS

Select from mounting plate and back panel models to complete installation. Unit can mount on various wall types.

### FOUNTAIN PUSH BUTTON

All chrome plated brass push button resists vandalism by allowing it to spin without unscrewing.



## SPECIFICATIONS

Model 1920 wall mounted bottle filler shall include 100% lead-free waterways, satin stainless steel construction, 1 gpm (3.78 L) laminar flow, push-button operated stainless steel valve with front-accessible cartridge and flow adjustment. It can be used as a stand-alone station or mounted above the Haws® 1001, 1011, 1107L, 1109, 1117L, and 1119 series drinking fountains.

## APPLICATIONS

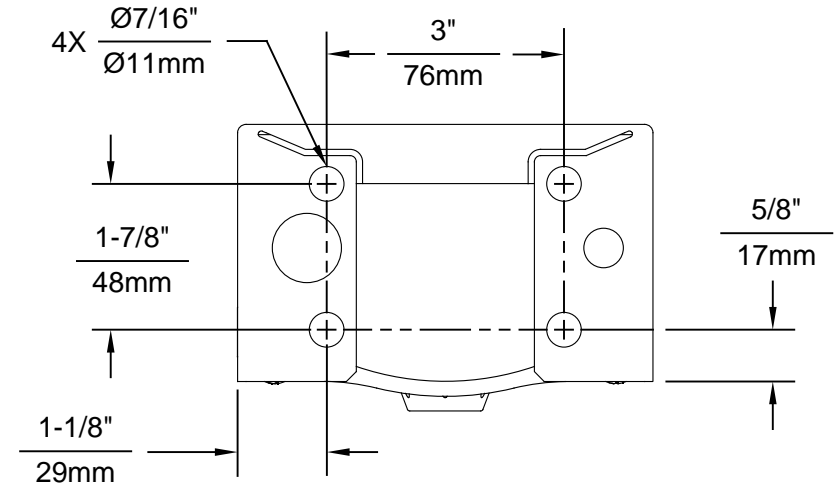
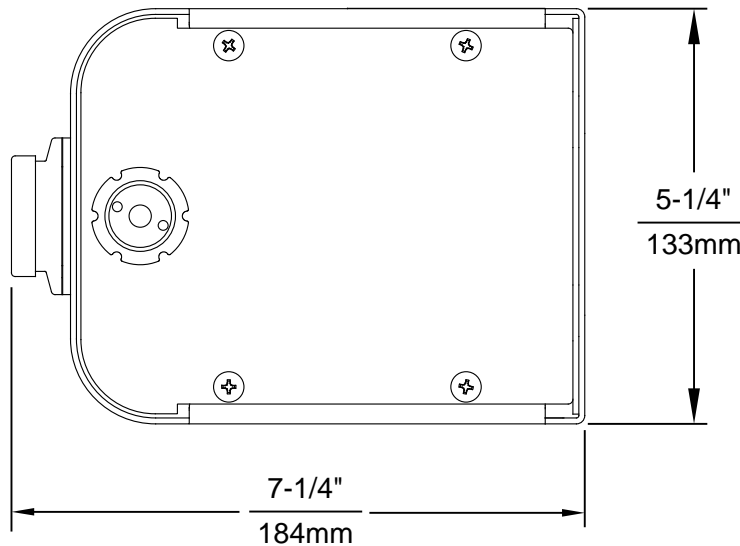
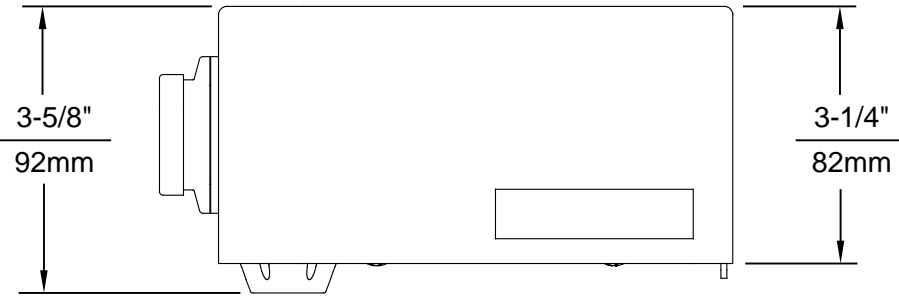
This type of wall mounted bottle filler may be placed in settings such as schools and other locations in and around office buildings with existing fountain installations where the temperature remains above freezing. Haws® manufactures drinking fountains and electric water coolers to be lead-free by all known definitions including NSF/ANSI 61, Section 9, NSF/ANSI 372, California Proposition 65, and the Federal Safe Drinking Water Act. Product is compliant to California Health and Safety Code 116875 (AB 1953-2006).

## OPTIONS

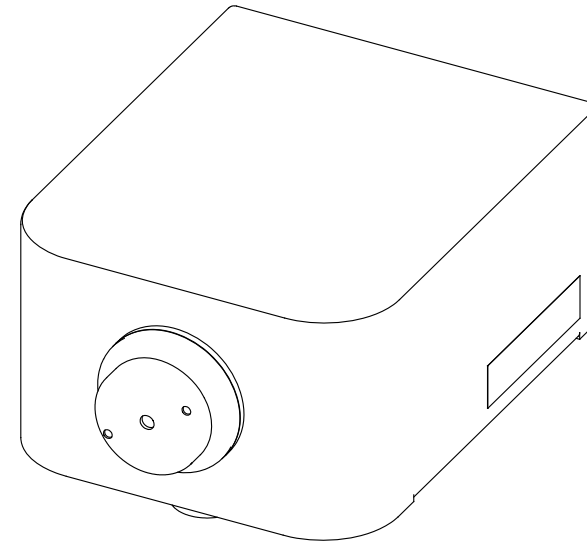
- ☐ Mounting Plate: Model 6700R mounting plate is used with the 1920 series bottle fillers for single or dual fountain retrofit installations.
- ☐ Back Panel: Model BP15, satin finish stainless steel 15 inch back panel for Model 1920.
- ☐ Back Panel: Model BP32, satin finish stainless steel 32" back panel for model 1920 bottle filler.
- ☐ Mounting Plate: Model 6700 universal mounting plate for most wall mounted fountains. Priced Separately.

For more information, visit [www.hawsc.com](http://www.hawsc.com) or call (888) 640-4297.






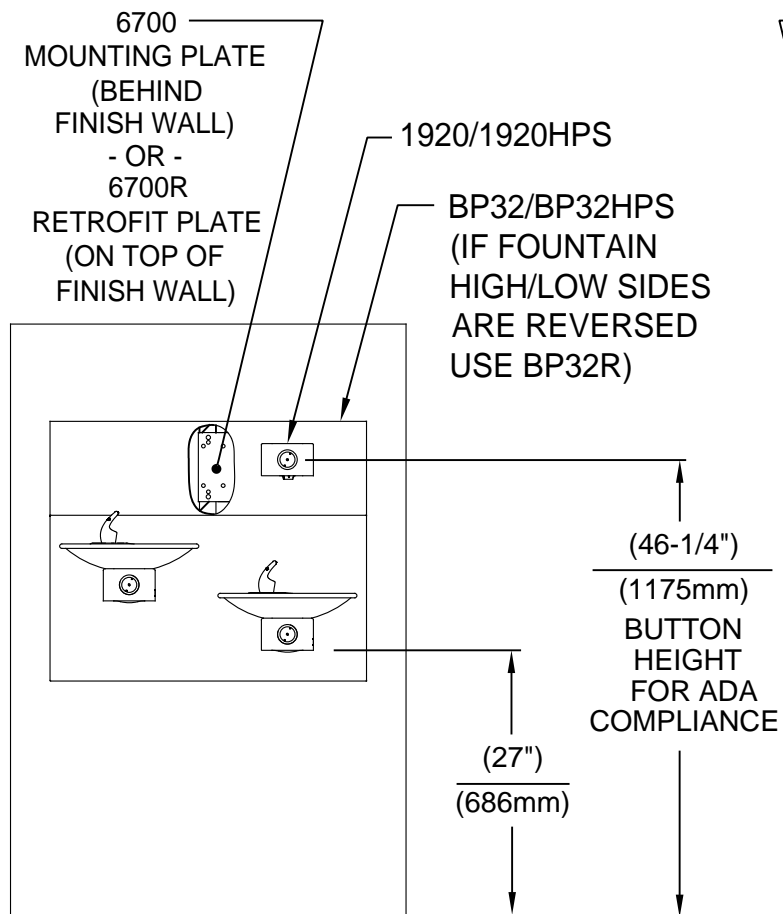
1920 MOUNTING HOLE LOCATIONS



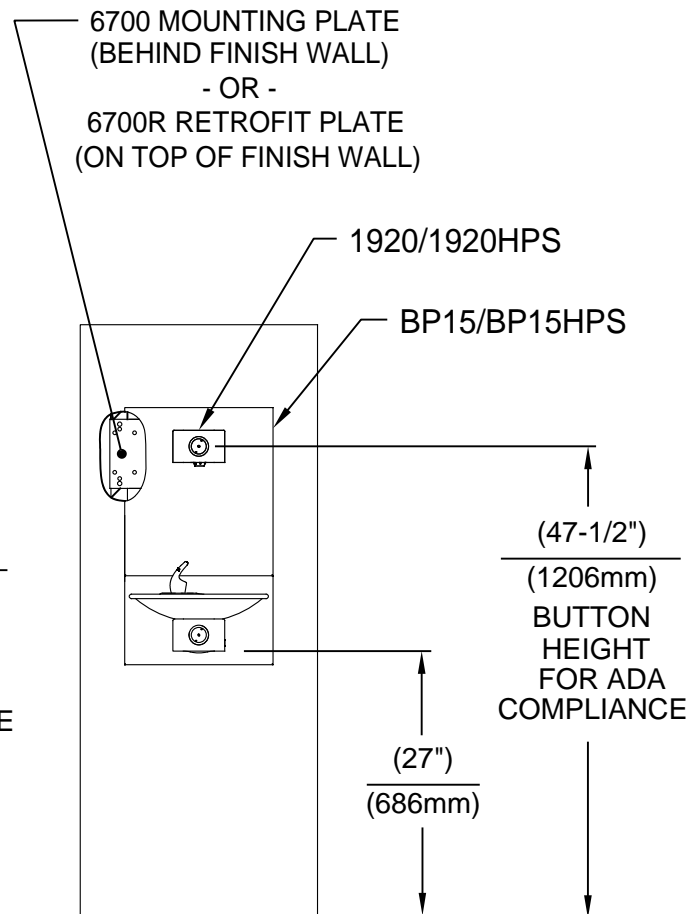
NOTES:

1. SEE SEPARATE INSTALLATION DRAWINGS FOR MOUNTING PLATES AND BACKPANELS
2. WHEN INSTALLING THIS UNIT, LOCAL, STATE OR FEDERAL CODES SHOULD BE ADHERED TO FOR INSTALLATION LOCATIONS, WASTE & SUPPLY REQUIREMENTS OTHER THAN SHOWN.

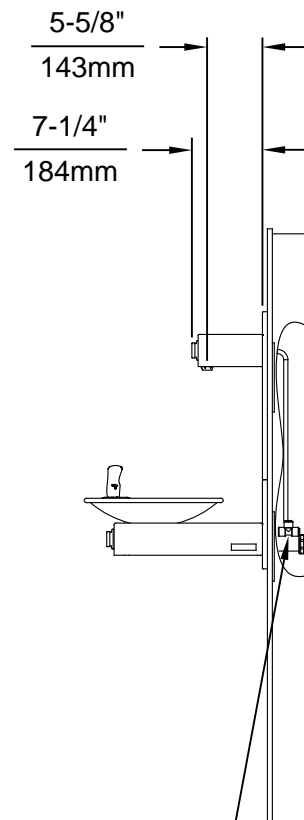
		<b>Haws®</b>		1455 KLEPPE LANE SPARKS, NEVADA 89431 (775) 359-4712 FAX (775) 359-7424 E-MAIL: HAWS@HAWS.CO.COM WEBSITE: WWW.HAWS.CO.COM	
ECN NO. 5081	REVISED PER ECN: 5550	BY: FV	MODEL(S)		PART NUMBER
DRAWN: DS	DATE: 05/25/16	CHKD: DP	1920/1920HPS/1920W		0510000490.D
APPROVED: FV	DATE: 05/14/20	SCALE: N/A	DRAWING TYPE: INSTALLATION	SIZE: A	REVISION 6
				SHEET 1	OF 6



**INSTALLATION ABOVE HAWS 1011, 1011HPS, 1011HPSMS, 1011MS, H1011.8, H1011.8HO, H1011.8HPS**

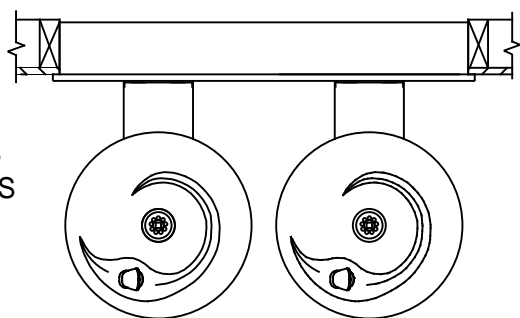



**INSTALLATION ABOVE HAWS 1001, 1001HPS, 1001HPSMS, 1001MS, H1001.8, H1001.8HPS**

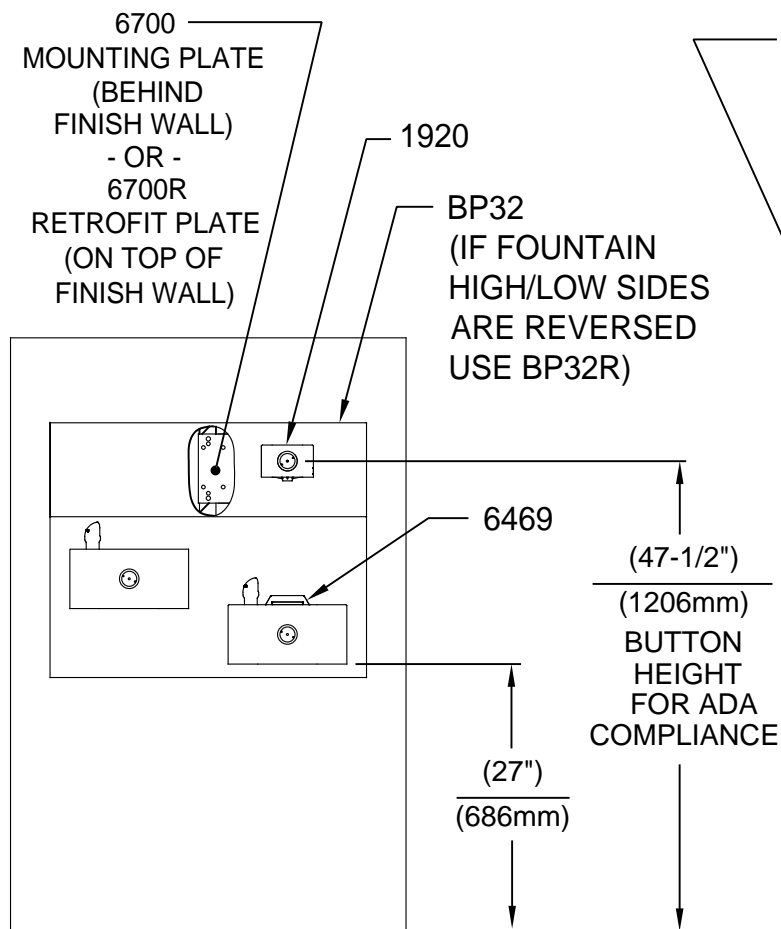


\* IF YOUR FOUNTAIN IS THIS STYLE USE THESE DIMENSIONS

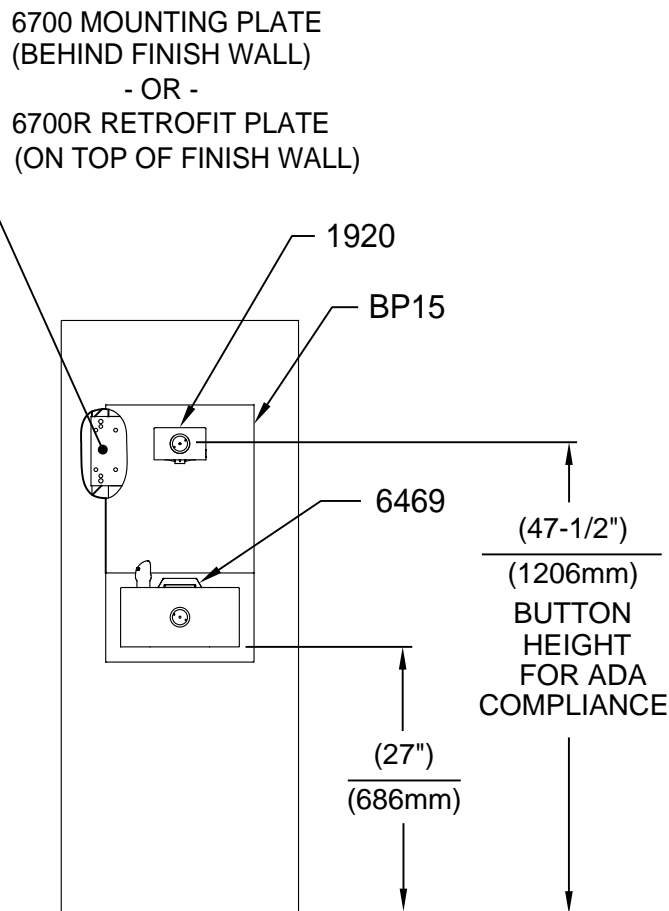
1. SEE SEPARATE INSTALLATION DRAWINGS FOR MOUNTING PLATES AND BACKPANELS
2. WHEN INSTALLING THIS UNIT, LOCAL, STATE OR FEDERAL CODES SHOULD BE ADHERED TO FOR INSTALLATION LOCATIONS, WASTE & SUPPLY REQUIREMENTS OTHER THAN SHOWN.



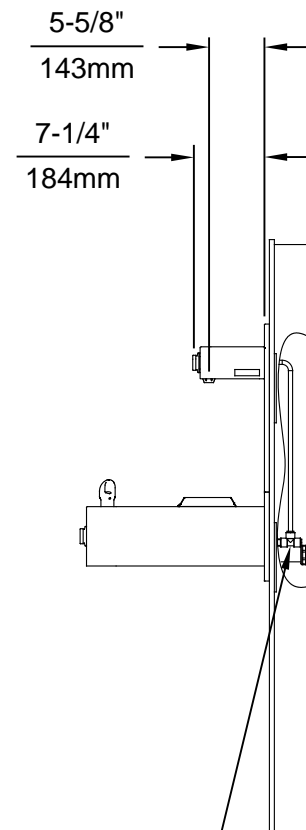
		1455 KLEPPE LANE SPARKS, NEVADA 89431 (775) 359-4712 FAX (775) 359-7424 E-MAIL: HAWS@HAWS.CO.COM WEBSITE: WWW.HAWS.CO.COM	
ECN NO. 5081	REVISED PER BY: FV	MODEL(S)	1920/1920HPS/1920W
DRAWN: MJ	DATE: 01/30/17	CHKD: DP	PART NUMBER 0510000490.D
APPROVED: FV	DATE: 05/14/20	SCALE: N/A	REVISION 6
DRAWING TYPE: INSTALLATION		SIZE: A	SHEET 2 OF 6



**INSTALLATION ABOVE HAWS 1119, 1119.14, H1119.8**



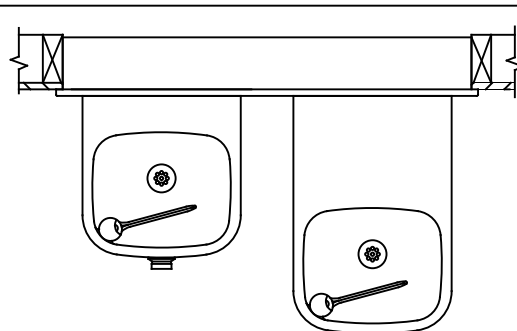
**INSTALLATION ABOVE HAWS 1109, 1109.14, H1109.8**




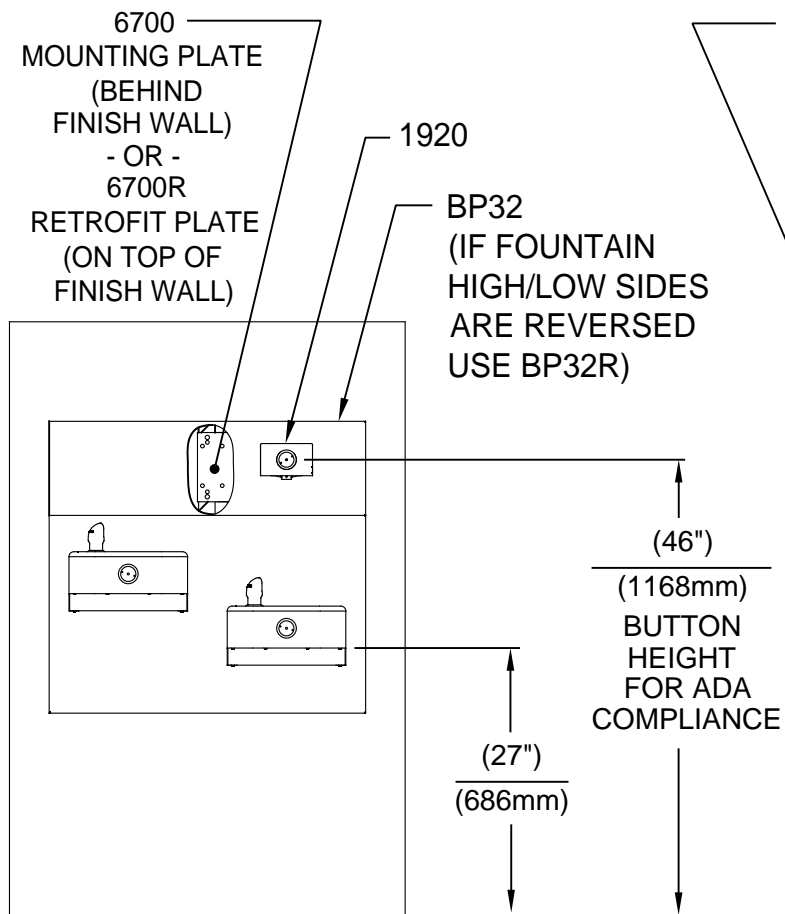
3/8" O.D. SUPPLY TUBING AND 3/8" O.D. PUSH-IN TEE SUPPLIED. (CONNECT TO FOUNTAIN SUPPLY LINE)

\* IF YOUR FOUNTAIN IS THIS STYLE USE THESE DIMENSIONS

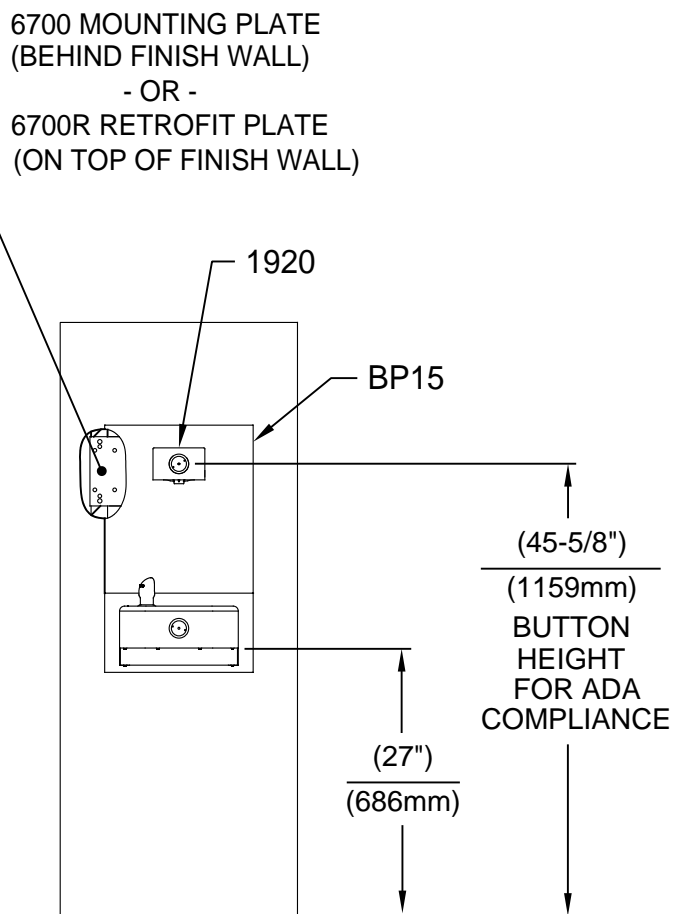
1. SEE SEPARATE INSTALLATION DRAWINGS FOR MOUNTING PLATES, BACKPANELS & DRIP TRAY
2. WHEN INSTALLING THIS UNIT, LOCAL, STATE OR FEDERAL CODES SHOULD BE ADHERED TO FOR INSTALLATION LOCATIONS, WASTE & SUPPLY REQUIREMENTS OTHER THAN SHOWN.



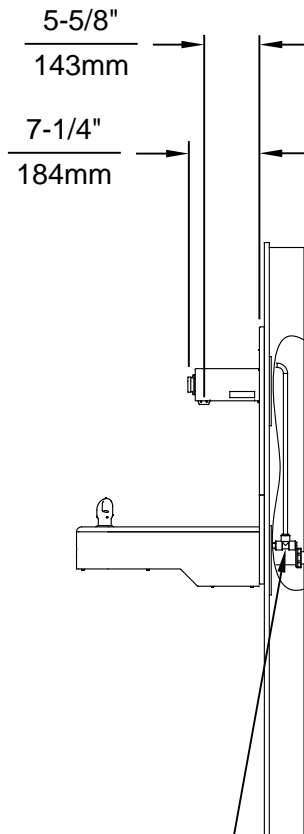
				1455 KLEPPE LANE SPARKS, NEVADA 89431 (775) 359-4712 FAX (775) 359-7424 E-MAIL: HAWS@HAWSO.COM WEBSITE: WWW.HAWSO.COM			
ECN NO. 5081	REVISED BY: FV	DATE: 01/30/17	CHKD: DP	MODEL(S) 1920/1920HPS/1920W		PART NUMBER 0510000490.D	
APPROVED: FV	DATE: 05/14/20	SCALE: N/A	DRAWING TYPE: INSTALLATION	SIZE: A	SHEET 3 OF 6	REVISION 6	



**INSTALLATION ABOVE HAWS 1117L, H1117.8**

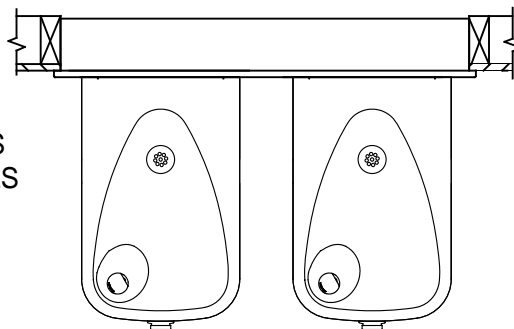


**INSTALLATION ABOVE HAWS 1107L, H1107.8**




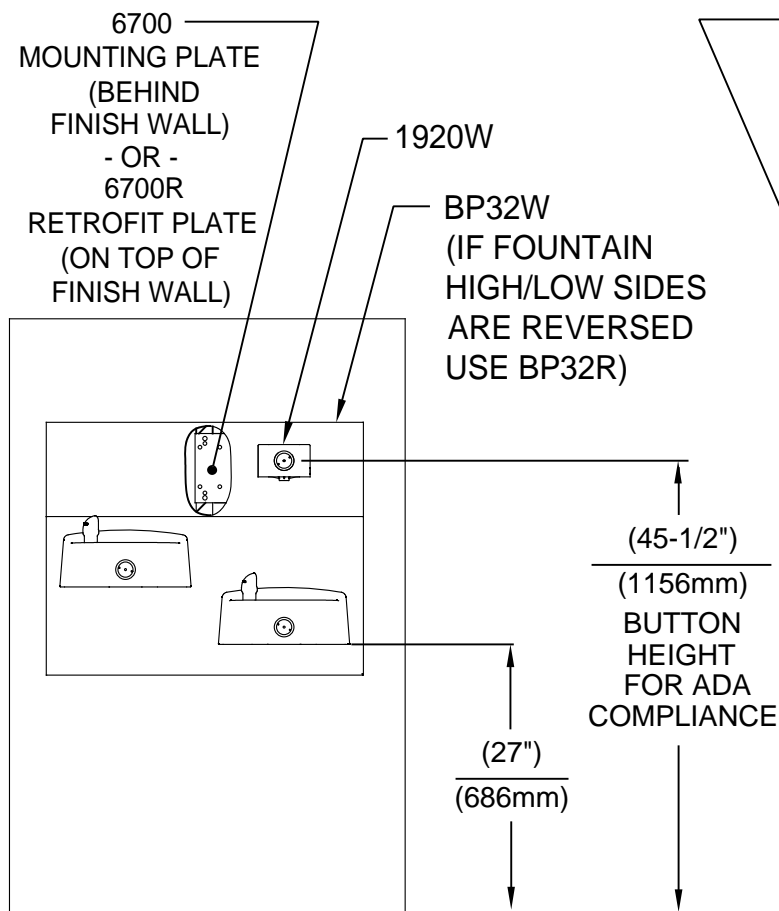
\* IF YOUR FOUNTAIN IS THIS STYLE USE THESE DIMENSIONS

1. SEE SEPARATE INSTALLATION DRAWINGS FOR MOUNTING PLATES AND BACKPANELS
2. WHEN INSTALLING THIS UNIT, LOCAL, STATE OR FEDERAL CODES SHOULD BE ADHERED TO FOR INSTALLATION LOCATIONS, WASTE & SUPPLY REQUIREMENTS OTHER THAN SHOWN.

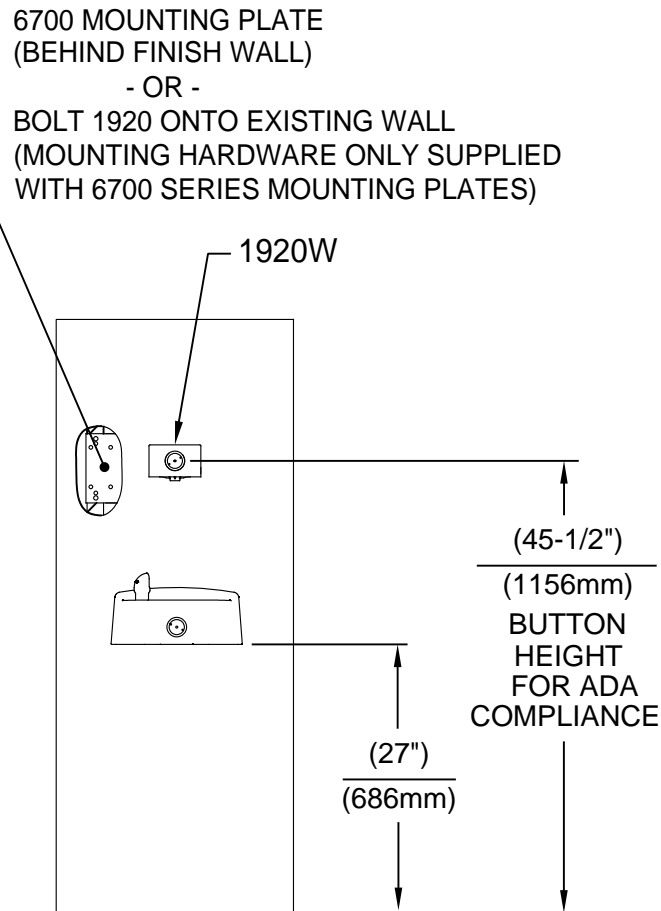


3/8" O.D. SUPPLY TUBING AND 3/8" O.D. PUSH-IN TEE SUPPLIED. (CONNECT TO FOUNTAIN SUPPLY LINE)

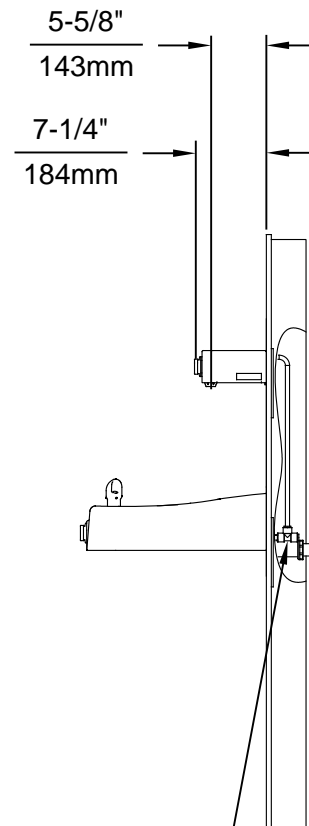
				1455 KLEPPE LANE SPARKS, NEVADA 89431 (775) 359-4712 FAX (775) 359-7424 E-MAIL: HAWS@HAWS.CO.COM WEBSITE: WWW.HAWS.CO.COM			
ECN NO. 5081	REVISED BY: ECN: 5550	FV	MODEL(S)	1920/1920HPS/1920W			PART NUMBER 0510000490.D
DRAWN: MJ	DATE: 01/30/17	CHKD: DP				REVISION 6	
APPROVED: FV	DATE: 05/14/20	SCALE: N/A	DRAWING TYPE: INSTALLATION	SIZE: A	SHEET 4 OF 6		



**INSTALLATION ABOVE HAWS 1501**

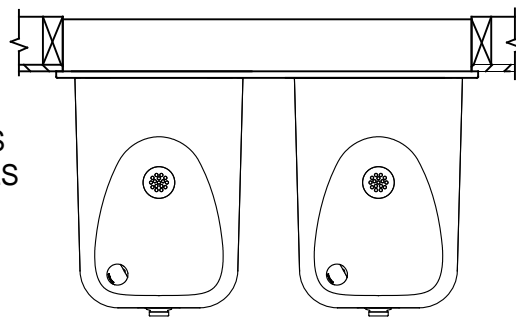


**INSTALLATION ABOVE HAWS 1311**

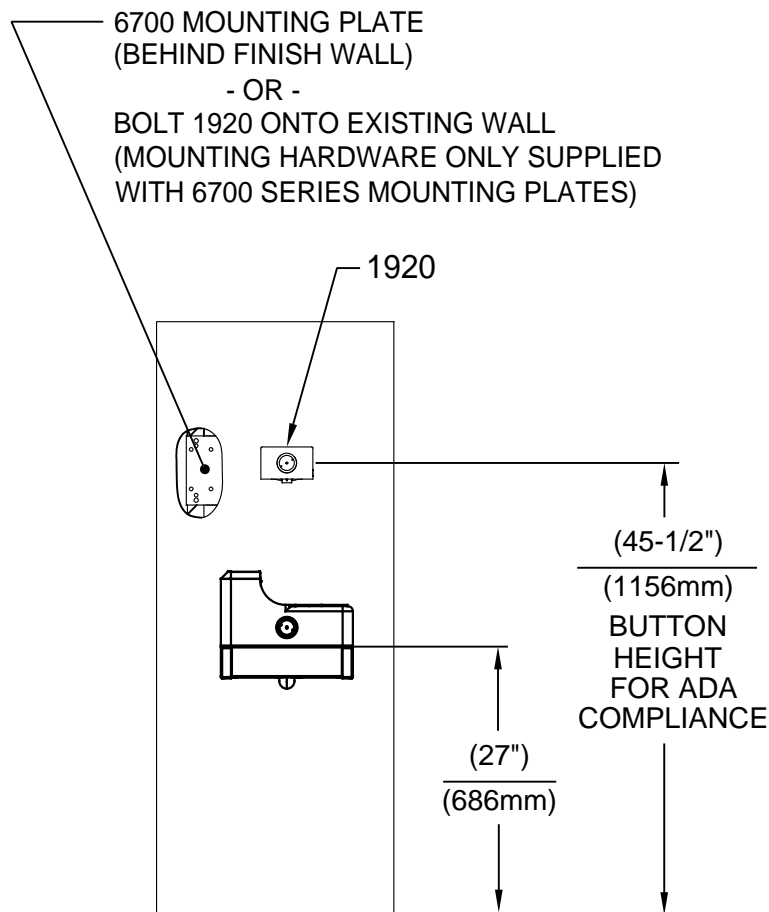


\* IF YOUR FOUNTAIN IS THIS STYLE USE THESE DIMENSIONS

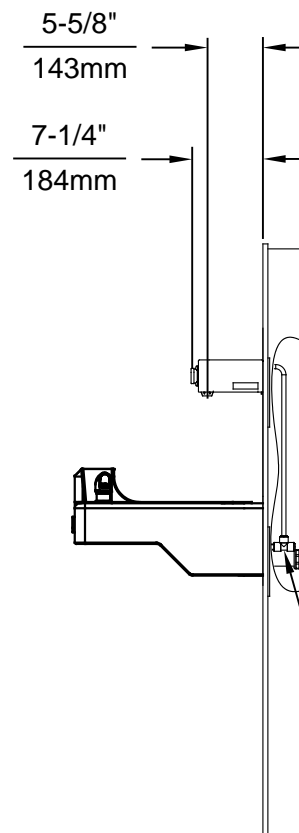
1. SEE SEPERATE INSTALLATION DRAWINGS FOR MOUNTING PLATES AND BACKPANELS
2. WHEN INSTALLING THIS UNIT, LOCAL, STATE OR FEDERAL CODES SHOULD BE ADHERED TO FOR INSTALLATION LOCATIONS, WASTE & SUPPLY REQUIREMENTS OTHER THAN SHOWN.



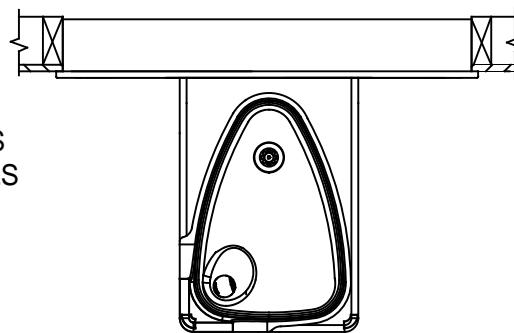
				1455 KLEPPE LANE SPARKS, NEVADA 89431 (775) 359-4712 FAX (775) 359-7424 E-MAIL: HAWS@HAWS.CO.COM WEBSITE: WWW.HAWS.CO.COM			
ECN NO. 5081	REVISED PER ECN: 5550	BY: FV	DATE: 02/13/17	MODEL(S)	1920/1920HPS/1920W		
DRAWN: MJ	DATE: 02/13/17	CHKD: DP	DATE: 05/14/20	SCALE: N/A	DRAWING TYPE: INSTALLATION	SIZE: A	PART NUMBER 0510000490.D
APPROVED: FV	DATE: 05/14/20	SCALE: N/A	DRAWING TYPE: INSTALLATION	SIZE: A	SHEET 5 OF 6	REVISION 6	




**INSTALLATION ABOVE HAWS 1047**



\* IF YOUR FOUNTAIN IS THIS STYLE USE  
THESE DIMENSIONS



1. SEE SEPERATE INSTALLATION DRAWINGS  
FOR MOUNTING PLATES AND BACKPANELS
2. WHEN INSTALLING THIS UNIT, LOCAL,  
STATE OR FEDERAL CODES SHOULD  
BE ADHERED TO FOR INSTALLATION  
LOCATIONS, WASTE & SUPPLY  
REQUIREMENTS OTHER THAN SHOWN.

				1455 KLEPPE LANE SPARKS, NEVADA 89431 (775) 359-4712 FAX (775) 359-7424 E-MAIL: HAWS@HAWSO.COM WEBSITE: WWW.HAWSO.COM			
ECN NO. 5220	REVISED PER ECN: 5550	BY: FV	DATE: 09/14/17	CHKD: DP	MODEL(S) 1920/1920HPS/1920W		PART NUMBER 0510000490.D
APPROVED: FV	DATE: 05/14/20	SCALE: N/A	DRAWING TYPE: INSTALLATION	SIZE: A	SHEET 5 OF 5		REVISION 6