

FEATURES & BENEFITS

CONSTRUCTION

Barrier-free design made of heavy-duty 11 gauge galvanized steel with green powder-coat finish. Unit has a high-polished stainless steel basin that resists stains and corrosion, recessed push-button, welded bubbler guard, and vandal-resistant bottom plate.

VANDAL RESISTANT

The bubbler heads, push buttons, drain strainers and access plates are locked in place, discouraging unwanted vandal tampering.

FREEZE-RESISTANT VALVE

Fully-engineered system with the pneumatic-operated, freeze-resistant valve installed below frost line to drain water to non-freezing depth allowing fountain to function year round. Assembly can be lifted to surface and lowered back into casing for easy maintenance without disturbing the fountain.

BUBBLER HEAD

Polished chrome-plated brass bubbler head with integral basin shank for added strength. Shielded, angled stream opening provides a steady, sanitary source of drinking water at .45 gpm.

DRAIN CLEAN-OUT

Top-down access to the drain allows the fountain portion to be cleaned without taking the unit apart, good for outdoor settings with drain-clogging sediment such as leaves, garbage, and other debris.

OPTIONS

For more information, visit www.hawsc.com or call (888) 640-4297.



SPECIFICATIONS

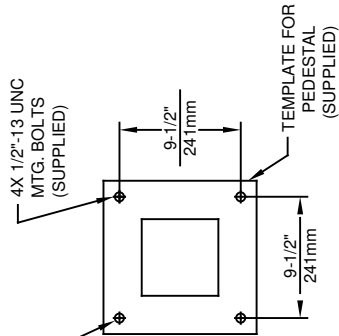
Model 3300FR ADA freeze-resistant vandal-resistant pedestal drinking fountain shall include an 11 gauge galvanized substrate steel pedestal with green powder-coating, polished stainless steel basins, polished chrome-plated brass vandal-resistant bubbler heads, polished chrome-plated brass buttons, polished chrome-plated brass waste strainers with top-down clean-out access, vandal-resistant access plates, integral mounting feet, and 1-1/2" slip waste.

REQUIRES MODELS 3300FR & 6518.2FR ORDERED SEPARATELY (Consult with the local authority having jurisdiction before installation in order to determine if any additional regulations or requirements may apply)

APPLICATIONS

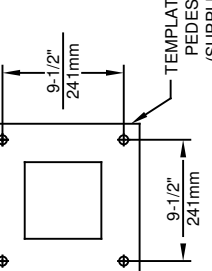
Perfect for either public or private outdoor settings, the 3300FR is a great fit in areas where aesthetics are important to the overall appeal of the architecture. Suitable in areas where weather conditions exist, this series stands strong as a nice addition to any community. Powder-coated finish help to maintain the fountains overall appeal so it remains looking as new as it did when it was installed. This type of pedestal drinking fountain may also be placed in a variety of settings such as: parks, schools, and other outdoor environments around office buildings where the temperature may drop into freezing conditions. Model meets all current Federal Regulations for the disabled including those in the Americans with Disabilities Act. Haws manufactures drinking fountains, faucets and electric water coolers to be lead-free by all known definitions including NSF/ANSI/CAN 61-Section 9, NSF/ANSI/CAN 372, California Proposition 65, and the Federal Safe Drinking Water Act. Product is compliant to California Health and Safety Code 116875 (AB 1953-2006), and 116876 (AB 100) "NSF/ANSI/CAN 61: Q ≤ 1".



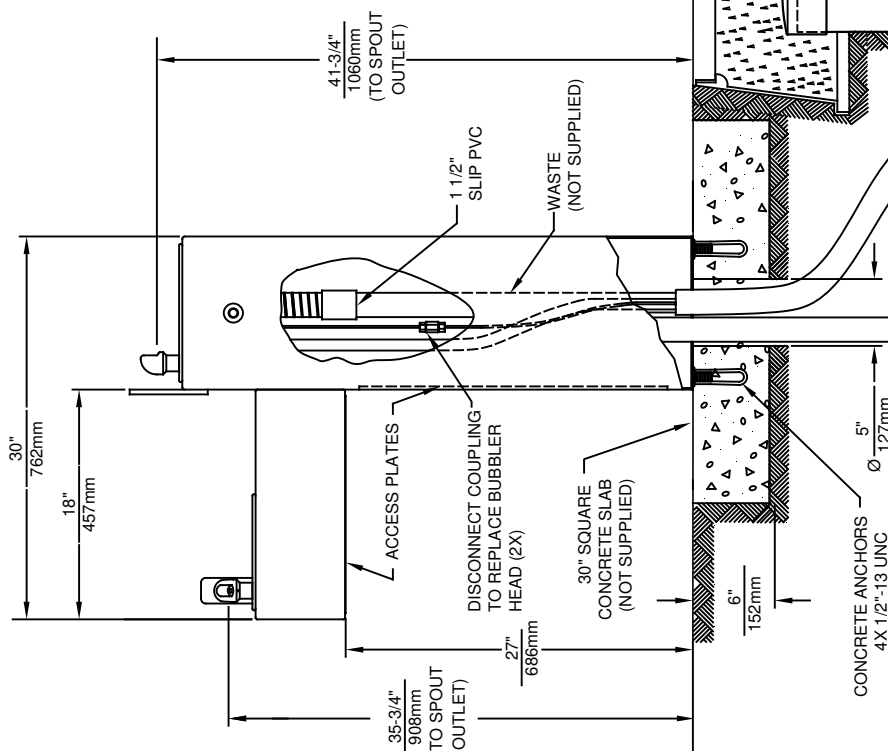


MOUNTING DETAIL

4X 1/2"-13 UNC MTG. BOLTS (SUPPLIED)



TEMPLATE FOR PEDESTAL (SUPPLIED)



6518.2FR VALVE ASSY
REQUIRED - SOLD SEPARATELY

4X MOUNTING HOLES FOR 1/2" ANCHOR BOLTS IN CONCRETE SLAB

30" 762mm

18" 457mm

41-3/4" 1060mm (TO SPOUT OUTLET)

35-3/4" 908mm (TO SPOUT OUTLET)

27" 686mm

30" SQUARE CONCRETE SLAB (NOT SUPPLIED)

6" 152mm

CONCRETE ANCHORS 4X 1/2"-13 UNC

5" 127mm


BURY DEPTHS OF 48" (1219mm) AND 72" (1829mm). WASTE TO BE 1-1/4" IPS MINIMUM TO A POROUS GRAVEL FILL OR MAIN SEWER LINE LOCATED BELOW FROST LINE (NOT SUPPLIED).

1 1/2" SLIP PVC

WASTE (NOT SUPPLIED)

VALVE BOX (NOT SUPPLIED)

GROUND LEVEL



1455 KLEPPE LANE
SPARKS, NEVADA 89431
(775) 359-4712 FAX (775) 359-7424
E-MAIL: HAWS@HAWSO.COM
WEBSITE: WWW.HAWSO.COM

ECN NO.	REVISED PER	BY:	MODEL(S)	PART NUMBER
	ECN: 5527	FV		0002077342.D
DRAWN:	DATE:	CHKD.:	3300FR	REVISION
C.J.L.	09/29/92	DP		14
APPROVED:	DATE:	SCALE:	DRAWING TYPE:	SHEET 1 OF 1
FV	04/02/20	1:13	INSTALLATION	