



model SK3HPS

Fountain Skirt

FEATURES & BENEFITS

OPTIONS

For more information, visit www.hawsc.com or call (888) 640-4297.



Shown mounted on 1011HPS

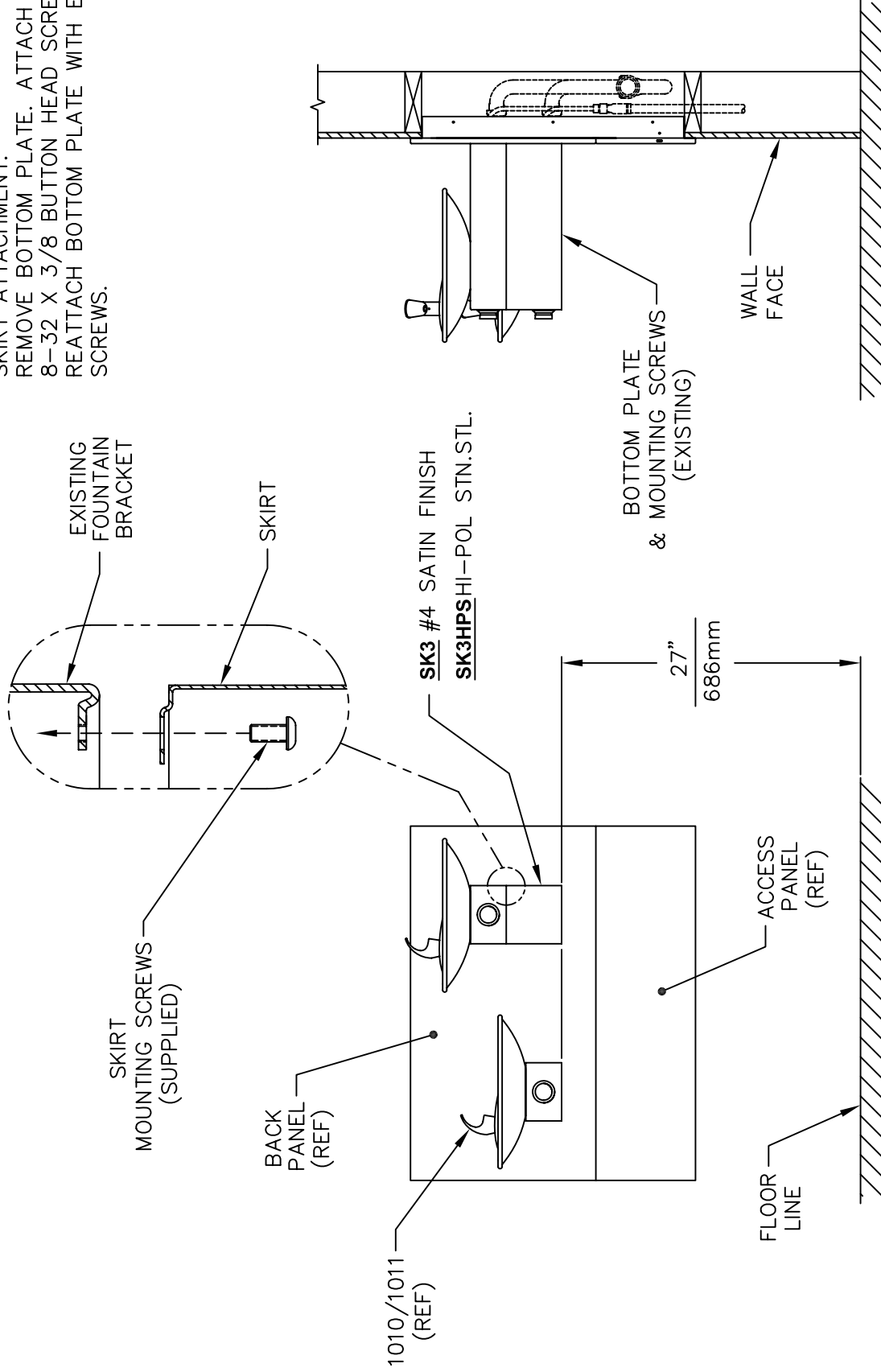
SPECIFICATIONS

Model SK3HPS is a wrap around matching high polished finished stainless steel cane touch skirt for installation on the high unit in some applications that may need to comply with ADA protruding objects guidelines. For use on Models 1011HPS and H1011.8HPS.

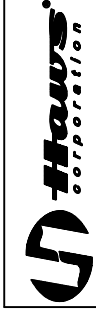
APPLICATIONS

THIS DOCUMENT IS TRUE AND CORRECT AT TIME OF PUBLICATION. CONTINUED PRODUCT IMPROVEMENTS MAKE SPECIFICATIONS AND MEASUREMENTS SUBJECT TO CHANGE WITHOUT NOTICE.

SKIRT ATTACHMENT:
 REMOVE BOTTOM PLATE. ATTACH SKIRT WITH 8-32 X 3/8 BUTTON HEAD SCREWS SUPPLIED. REATTACH BOTTOM PLATE WITH EXISTING 8-32 SCREWS.



**ASSEMBLY SHOWN WITH OPTIONAL
 MTGFR.DF2 MOUNTING FRAME
 AND ACCESS PANEL**



INFO FAX : 1-888-FAX-HAWS (1-888-329-4297)
 1455 Kleppe Ln, Sparks NV, 89431
 Phone: 775-359-4712 Fax: 775-359-7424
 Haws Ag, Bachweg 3, CH-3401 Burgdorf Switzerland
 Haws Mtg Pte Ltd 74 Sungai Kadut Loop Singapore 729531
 e-mail: Haws@hawsco.com website: www.hawsco.com

FOR NO.	REVISED BY	DATE	BY	DATE	APPROVED
ECN: 4087	BW	01/09			
MODEL(S):		SK3/SK3HPS			
DRAWING		INFO FAX DOC #			
PART NUMBER		1393300			
SCALE:		ETA			
DRAWING TYPE:		INSTALLATION/FABRACK			
SIZE:		A SH. 1 OF 1			