



OASIS INTERNATIONAL

# AQUA POINTE™

SINGLE FOUNTAIN WITH RECESSED ELECTRONIC BOTTLE FILLER

## M140REBF

### Suggested Specification

Shall deliver ambient water through a single fountain in combination with an electronic recessed bottle filler. Fountain will have vandal resistant mechanical push button and a low flow, one piece bubbler with flexible guard. Water flow to the bottle filler is dispensed through a electrically activated solenoid. Key AquaPointe bottle filler component contain FRESHSHIELD which utilizes a silver-based antimicrobial compound that reduces the growth of micro-organisms and mildew to protect the surfaces from discoloration, odors and degradation. Basin shall be designed to eliminate splashing and standing water. Cooling system shall use R-134a refrigerant. Shall comply with ANSI A117.1 and ADA.

### Model

**M140REBF** Delivers water to fountain and bottle filler

### Standard Features

- Built-in 100 micron strainer stops particles before they enter the waterway
- Waterways are Lead-free in materials and construction
- Heavy duty steel frame
- Flexible one piece water saver bubbler guard
- Hands free bottle filler with auto 20 second shut off, integrated counter and filter monitor.

### Installation

- Prior to roughing, consult with local, state and federal codes for proper mounting height
- Shipped with complete instructions and wall mounting bracket
- Recessed mounting frame included, but water supply, electrical and waste drain required.



### Options (at additional cost)

- One Piece Chrome Plated Brass Bubblers
- Oasis Green Filter System

### Finishes

Standard cabinet finish: Brushed Stainless Steel

Components in this fountain are lead free as defined by the Safe Drinking Water Act Amendments of 1986, and the Lead Contamination Control Act of 1988.

ADA compliant for reach ranges. These models meet guidelines for children's (ages 5 and up) accessibility providing the floor to button height is less than 40 inches and proper clear floor space is provided for frontal approach. Fountain is ADA compliant for Adults in Wheelchairs.

Product certified to NSF/ANSI standard 61, Annex G (weighted average lead content of  $\leq 0.25\%$ ) and is in compliance with California's health and safety code section 116875 (commonly known as AB1953). The green filter has been tested to ANSI/NSF standards 42 not by NSF.

Models covered by this specification comply with all known plumbing codes. Listed by Underwriters' Laboratories to U.S. and Canadian standards.

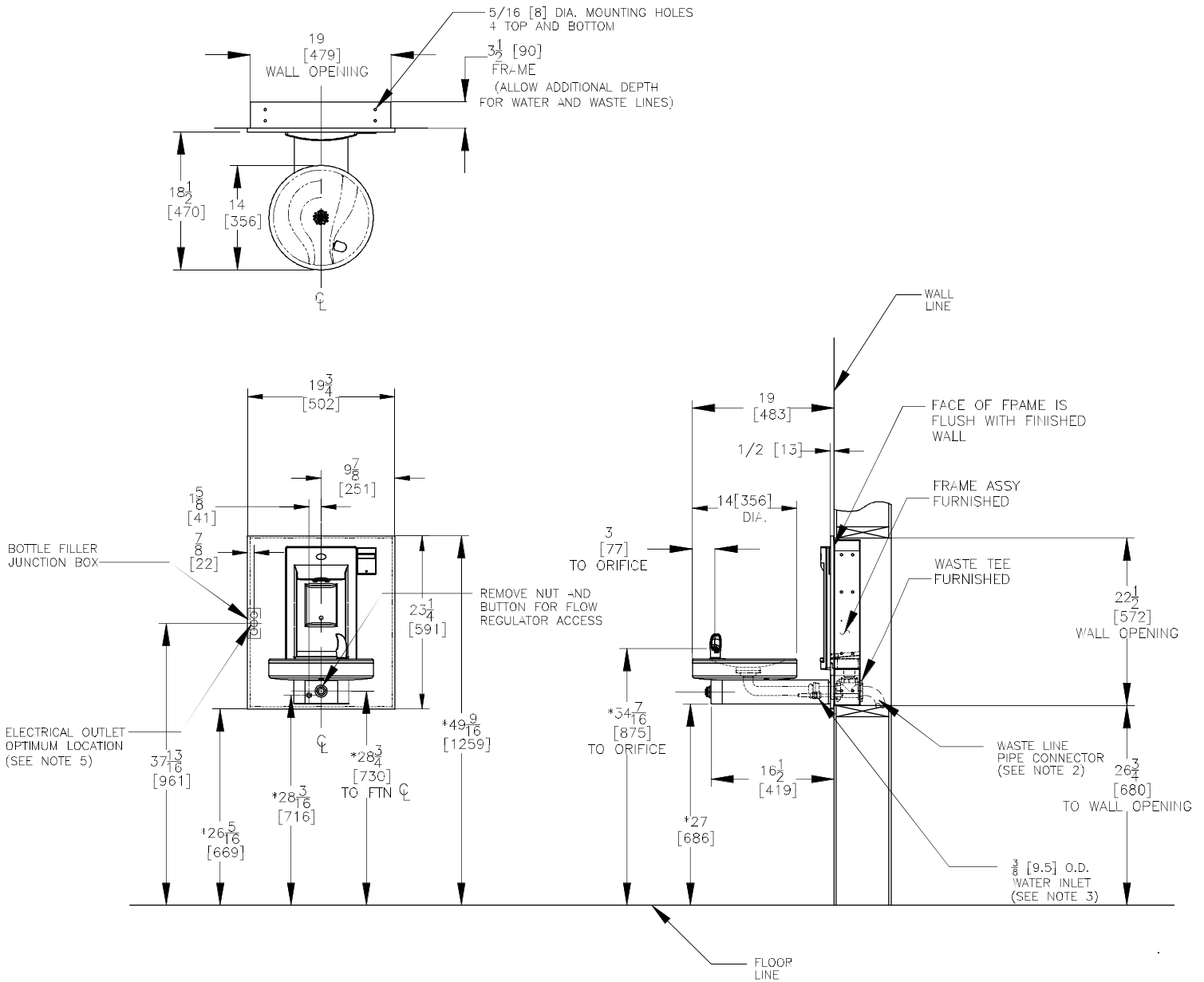


Model	50° F Drinking Water 90° F Ambient Air Temp*		115 Volts, 60 HZ			Cabinet Color Finish	Net Wt. Approx.
	Rated Capacity GPH	Base Rate GPH	Compr. HP	Full Load Amps	Rated Watts		
M140REBF	0.0	0.0	-	.10	7	NO	46 Lbs.

\*Industry Standard Rating Condition 80° F inlet water temperature.

Specifications subject to change without notice

# OASIS® RADII™ FOUNTAIN FOUNTAIN WITH VersaFiller® HANDS FREE BOTTLE FILLER MODEL M140REBF



- NOTES:**
- \*1. RECOMMENDED ADULT HEIGHT INSTALLATION SHOWN. ADJUST VERTICAL DIMENSIONS AS REQUIRED TO COMPLY WITH FEDERAL, STATE AND LOCAL CODES.
  2. STOP VALVE, TRAP, PIPE CONNECTOR TO WASTE LINE NOT PROVIDED WITH UNIT. 2[51] PROJECTION OF 1 1/2 [38] OR 1 1/4 [32] PIPE STUB FOR 1 1/4 [32] O.D. WASTE LINE REQUIRED.
  3. 2[51] PROJECTION OF 3/8 [9.5] O.D. WATER SUPPLY TUBE REQUIRED.
  4. ALL DIMENSIONS ARE IN INCHES. DIMENSIONS IN BRACKETS [ ] ARE IN MILLIMETERS.
  5. 115V GROUNDING NORTH AMERICAN DUPLEX RECEPTACLE REQUIRED. THIS DRINKING WATER COOLER IS INTENDED TO BE CONNECTED TO A 20A MINIMUM GROUND FAULT CIRCUIT INTERRUPTING (GFCI) DEVICE TO MEET UL REQUIREMENTS.

<p>THIRD ANGLE PROJECTION</p>	<p>ROUGHING-IN AND DIMENSIONAL DRAWING</p>
-------------------------------	----------------------------------------------------