



OASIS INTERNATIONAL

AQUA POINTE™

SPORTS BOTTLE FILLER WITH ADA FOUNTAIN

M8WRSBF, M12WRSBF

Suggested Specification

Model M8WRSBF shall deliver 8.0 gph of 50°F water at 90°F ambient and 80°F inlet water. Model M12WRSBF shall deliver 12.0 gph. Fountain shall be activated by vandal resistant mechanical push button and a low flow one piece bubbler with flexible guard. Water flow to the bottle filler is dispensed through a mechanically activated push button. Basin shall be designed to eliminate splashing and standing water. The built in recessed Aqua Pointe bottle filler shall contain FRESHSHIELD, which utilizes a silver based antimicrobial compound that reduces the growth of micro-organisms and mildew to protect the surface from discoloration, odors and degradation. Cooling system shall use R-134A refrigerant. Unit shall comply with ANSI A117.1 and ADA

Models

M8WRSBF delivers 8.0 gph of chilled drinking water.

M12WRSBF delivers 12.0 gph of chilled drinking water.

Standard Features

- Built-in 100 micron strainer stops particles before they enter the waterway
- Waterways are Lead-free in materials and construction
- Heavy duty steel frame
- Flexible one piece water saver bubbler
- High efficiency cooling tank and coil
- Refrigerant R-134a
- Built in panel locks for easy access to chiller and filtration

Installation

- Prior to roughing, consult with local, state and federal codes for proper mounting height
- Shipped with complete instructions and wall mounting bracket
- Removable front panels allow for easy access to filtration and refrigeration unit
- Recessed mounting frame included, but water supply, electrical and waste drain required.



"HYBRID" unit offers the convenience and efficiency of a bottle-filler with the look and compliance of an ADA fountain.



Alternate ADA Bottle Filler Activation Lever

Options (at additional cost)

- One Piece Chrome Plated Brass Bubblers
- Hands Free / Sensor Operated Bottle Filler
- Alternate ADA Bottle Filler Activation Lever
- Oasis Green Filter System

Finishes

Standard cabinet finish: Brushed Stainless Steel

Components in this fountain are lead free as defined by the Safe Drinking Water Act Amendments of 1986, and the Lead Contamination Control Act of 1988.

ADA compliant for reach ranges. These models meet guidelines for children's (ages 5 and up) accessibility providing the floor to button height is less than 40 inches and proper clear floor space is provided for frontal approach. Fountain is ADA compliant for Adults in Wheelchairs.

Product certified to NSF/ANSI standard 61, Annex G (weighted average lead content of $\leq 0.25\%$) and is in compliance with California's health and safety code section 116875 (commonly known as AB1953). The green filter has been tested to ANSI/NSF standards 42 not by NSF.

Models covered by this specification comply with all known plumbing codes. Listed by Underwriters' Laboratories to U.S. and Canadian standards.



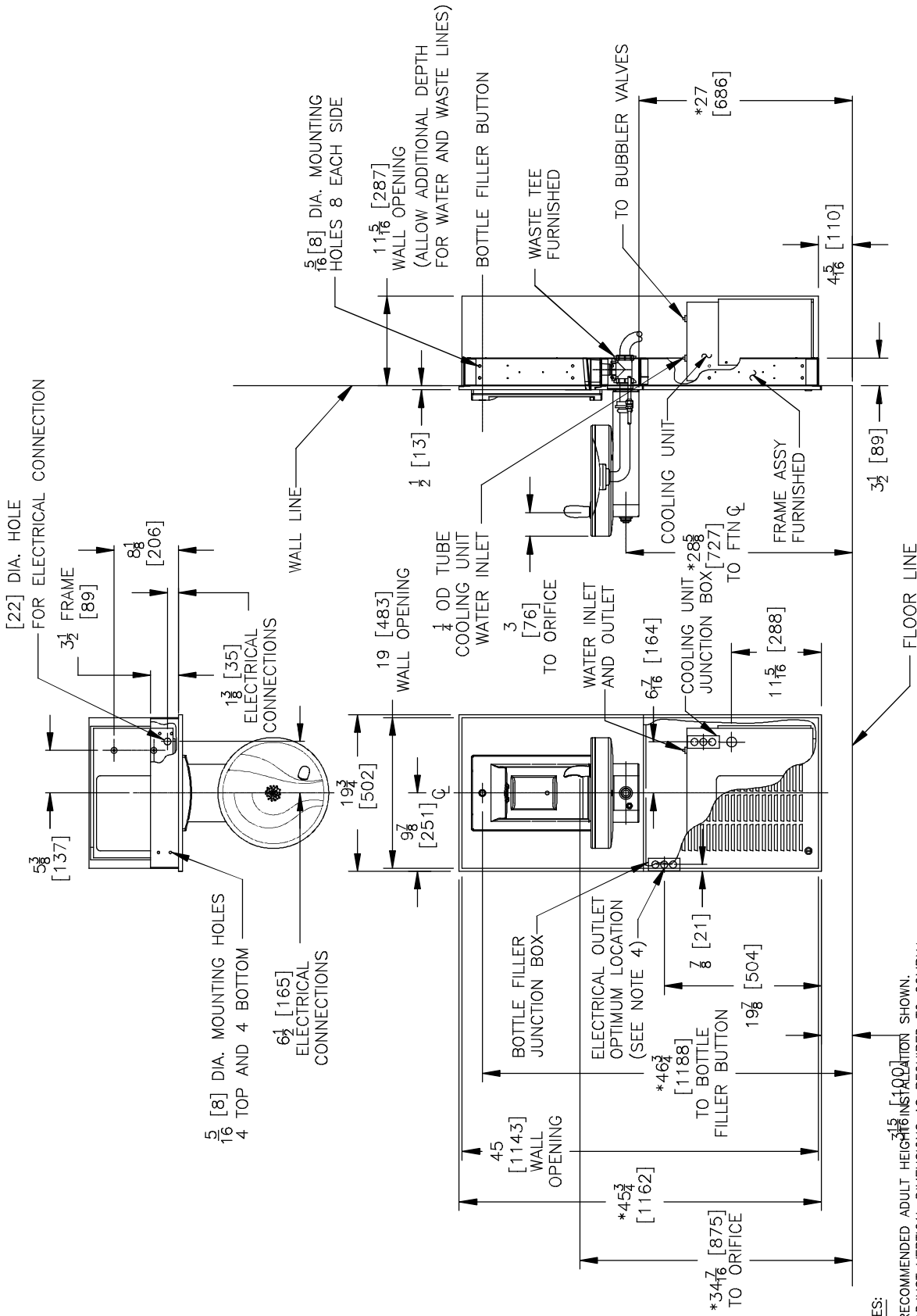
Model	50° F Drinking Water 90° F Ambient Air Temp*		115 Volts, 60 HZ			Cabinet Color Finish	Net Wt. Approx.
	Rated Capacity GPH	Base Rate GPH	Compr. HP	Full Load Amps	Rated Watts		
M8WRSBF	8.0	8.0	1/4	4.8	550	NO	161 Lbs.
M12WRSBF	12.0	12.0	1/3	5.4	620	NO	161 Lbs.

*Industry Standard Rating Condition 80°F inlet water temperature.

Specifications subject to change without notice

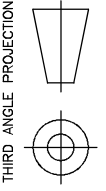
OASIS® MODULAR RADII™ FOUNTAIN WITH SPORTS BOTTLE FILLER

MODELS MWRSBF, M8WRSBF, M12WRSBF, M12WRSBF



NOTES:

- *1. RECOMMENDED ADULT HEIGHTS ^{71 1/2} [1810] IN. POSITION SHOWN. ADJUST VERTICAL DIMENSIONS AS REQUIRED TO COMPLY WITH FEDERAL, STATE AND LOCAL CODES.
2. STOP VALVE, TRAP, PIPE CONNECTOR TO WASTE LINE NOT PROVIDED. SHORT RADIUS TRAP REQUIRED.
3. ALL DIMENSIONS ARE IN INCHES. DIMENSIONS IN BRACKETS [] ARE IN MILLIMETERS.
4. 115V GROUNDED NORTH AMERICAN DUPLEX RECEPTACLE REQUIRED. THIS DRINKING WATER COOLER IS INTENDED TO BE CONNECTED TO A 20A MINIMUM GROUND FAULT CIRCUIT INTERRUPTING (GFCI) DEVICE TO MEET UL REQUIREMENTS.



THIRD ANGLE PROJECTION

ROUGHING-IN
AND
DIMENSIONAL DRAWING