



OASIS INTERNATIONAL

AQUA POINTE™

HANDS FREE BOTTLE FILLER WITH ADA FOUNTAIN

M8WREBF, M12WREBF

Suggested Specification

Model M8WREBF shall deliver 8.0 gph of 50°F water at 90°F ambient and 80°F inlet water. Model M12WREBF shall deliver 12.0 gph. Fountain shall be activated by vandal resistant mechanical push button, water flow to the bottle filler is delivered by means of an electronically activated solenoid. The unit shall have a low flow one piece bubbler with flexible guard. Basin shall be designed to eliminate splashing and standing water. The built in electronic recessed Aqua Pointe bottle filler shall contain FRESHSHIELD, which utilizes a silver based antimicrobial compound that reduces the growth of micro-organisms and mildew to protect the surface from discoloration, odors and degradation. Cooling system shall use R-134A refrigerant. Unit shall comply with ANSI A117.1 and ADA

Models

M8WREBF delivers 8.0 gph of chilled drinking water.
M12WREBF delivers 12.0 gph of chilled drinking water.

Standard Features

- Built-in 100 micron strainer stops particles before they enter the waterway
- Waterways are Lead-free in materials and construction
- Heavy duty steel frame
- Flexible one piece water saver bubbler
- High efficiency cooling tank and coil
- Refrigerant R-134a
- Hands free bottle filler with 20 second shut off, integrated counter and filter monitor
- Built in panel locks for easy access to chiller and filtration

Installation

- Prior to roughing, consult with local, state and federal codes for proper mounting height
- Shipped with complete instructions and wall mounting bracket
- Removable front panels allow for easy access to filtration and refrigeration unit
- Recessed mounting frame included, but water supply, electrical and waste drain required.

"HYBRID" unit offers the convenience and efficiency of a bottle-filler with the look and compliance of an ADA fountain.



Options (at additional cost)

- One Piece Chrome Plated Brass Bubblers
- Oasis Green Filter System

Finishes

Standard cabinet finish: Brushed Stainless Steel

Components in this fountain are lead free as defined by the Safe Drinking Water Act Amendments of 1986, and the Lead Contamination Control Act of 1988.

ADA compliant for reach ranges. These models meet guidelines for children's (ages 5 and up) accessibility providing the floor to button height is less than 40 inches and proper clear floor space is provided for frontal approach. Fountain is ADA compliant for Adults in Wheelchairs.

Product certified to NSF/ANSI standard 61, Annex G (weighted average lead content of <=0.25%) and is in compliance with California's health and safety code section 116875 (commonly known as AB1953). The green filter has been tested to ANSI/NSF standards 42 not by NSF.

Models covered by this specification comply with all known plumbing codes. Listed by Underwriters' Laboratories to U.S. and Canadian standards.



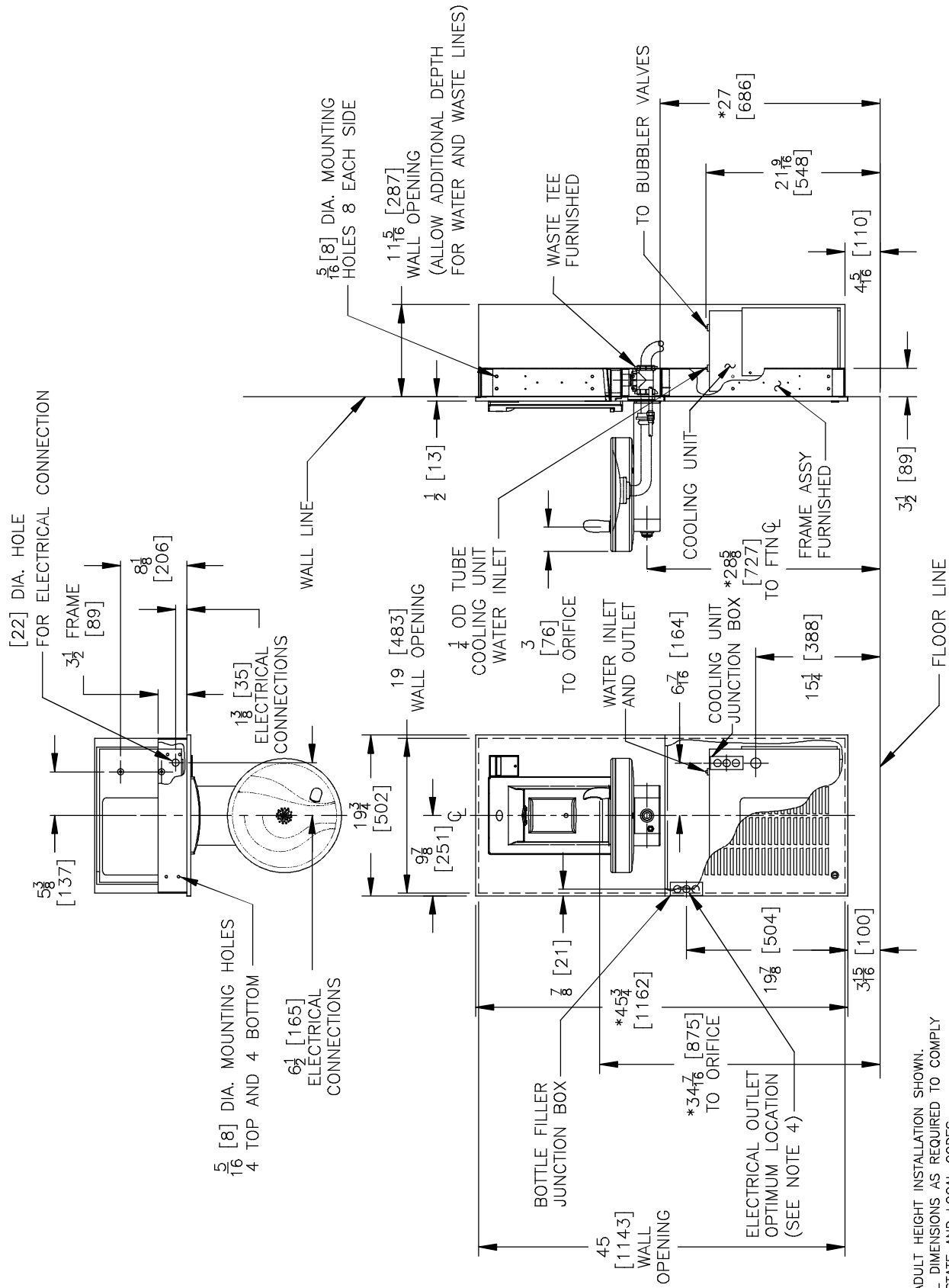
Model	50° F Drinking Water 90° F Ambient Air Temp*		115 Volts, 60 HZ			Cabinet Color Finish	Net Wt. Approx.
	Rated Capacity GPH	Base Rate GPH	Compr. HP	Full Load Amps	Rated Watts		
M8WREBF	8.0	8.0	1/4	4.9	557	NO	167 Lbs.
M12WREBF	12.0	12.0	1/3	5.5	627	NO	167 Lbs.

*Industry Standard Rating Condition 80°F inlet water temperature.

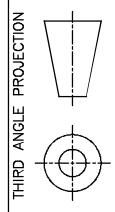
Specifications subject to change without notice

OASIS® MODULAR RADII™ FOUNTAIN WITH HANDS FREE SPORTS BOTTLE FILLER

MODELS MWREBF, M8WREBF, M12WREBF



- NOTES:
- *1. RECOMMENDED ADULT HEIGHT INSTALLATION SHOWN. ADJUST VERTICAL DIMENSIONS AS REQUIRED TO COMPLY WITH FEDERAL, STATE AND LOCAL CODES.
 - STOP VALVE, TRAP, PIPE CONNECTOR TO WASTE LINE NOT PROVIDED.
 - SHORT RADIUS TRAP REQUIRED.
 - ALL DIMENSIONS ARE IN INCHES. DIMENSIONS IN BRACKETS [] ARE IN MILLIMETERS.
 - 115V GROUNDING NORTH AMERICAN DUPLEX RECEPTACLE REQUIRED. THIS DRINKING WATER COOLER IS INTENDED TO BE CONNECTED TO A 20A MINIMUM GROUND FAULT INTERRUPTING (GFCI) DEVICE TO MEET UL REQUIREMENTS.



ROUGHING-IN
AND
DIMENSIONAL DRAWING