



# Technical Sheet

## Dual Height Fountain with Recessed Electronic Bottle Filler

- MMRSELEBF

### Suggested Specification

Shall deliver ambient water through dual height fountains in combination with a recessed electronic bottle filler. Fountains will have antimicrobial copper push buttons. Water flow to the bottle filler is dispensed through an electronically activated solenoid. System shall include filtration for taste, odor and chlorine reduction. Key AquaPointe bottle filler components contain Freshield® which utilizes a silver-based antimicrobial compound to protect the surfaces from discoloration, odors and degradation caused by the growth of micro-organisms and mildew. Basin shall be designed to eliminate splashing and standing water. Shall comply with ANSI A117.1 and ADA. Shall be listed by Underwriters Laboratories to US and Canadian standards. Shall comply with NSF/ANSI 61 and NSF/ANSI 372.



### Models

- MMRSELEBF delivers filtered water to dual height fountain and electronic bottle filler

### Standard Features

- Built-in 100 micron strainer stops particles before they enter the waterway
- Waterways are lead-free in materials & construction
- Antimicrobial copper push buttons
- Heavy duty steel frame
- Filtration system for taste, odor and chlorine reduction
- Flexible one piece water saver bubbler guard
- Recessed electronic bottle filler with large alcove integrated with Freshield
- Built in bottle counter, filter monitor and programmable time out feature
- Electronic bottle filler has independent hands-free activation

### Finishes

- Standard cabinet finish: Brushed stainless steel

### Installation

- Prior to roughing, consult with local, state and federal codes for proper mounting height
- Shipped with complete instructions & wall frame
- Frame allows for universal installation
- Recessed mounting frame included, but water supply and drain required

### Options

- One Piece Chrome Plated Brass Bubblers

### Limited 5-Year Warranty

(Continental limits of the United States and Canada) Five years on the sealed refrigeration system and most component parts. Detailed warranty certificate enclosed with each water cooler; sample available upon request.

### Export Warranty

One year on components parts. Detailed warranty certificate enclosed with each drinking fountain; sample copy available upon request.

### Certifications/Compliance

- Certified to UL 399 and CAN/CSA C22.2 No.120 (electric water coolers only)
- Product Certified to NSF/ANSI Standard 61-G & 372 and conforms with the lead content requirements for "Lead Free" plumbing as defined by California, Vermont, Maryland, and Louisiana state laws and the U.S. Safe Drinking Water Act
- These water coolers comply with the requirements of ADA (Americans with Disabilities Act) when properly installed



**WARNING:**  
Cancer and Reproductive Harm  
[www.P65Warnings.ca.gov](http://www.P65Warnings.ca.gov)

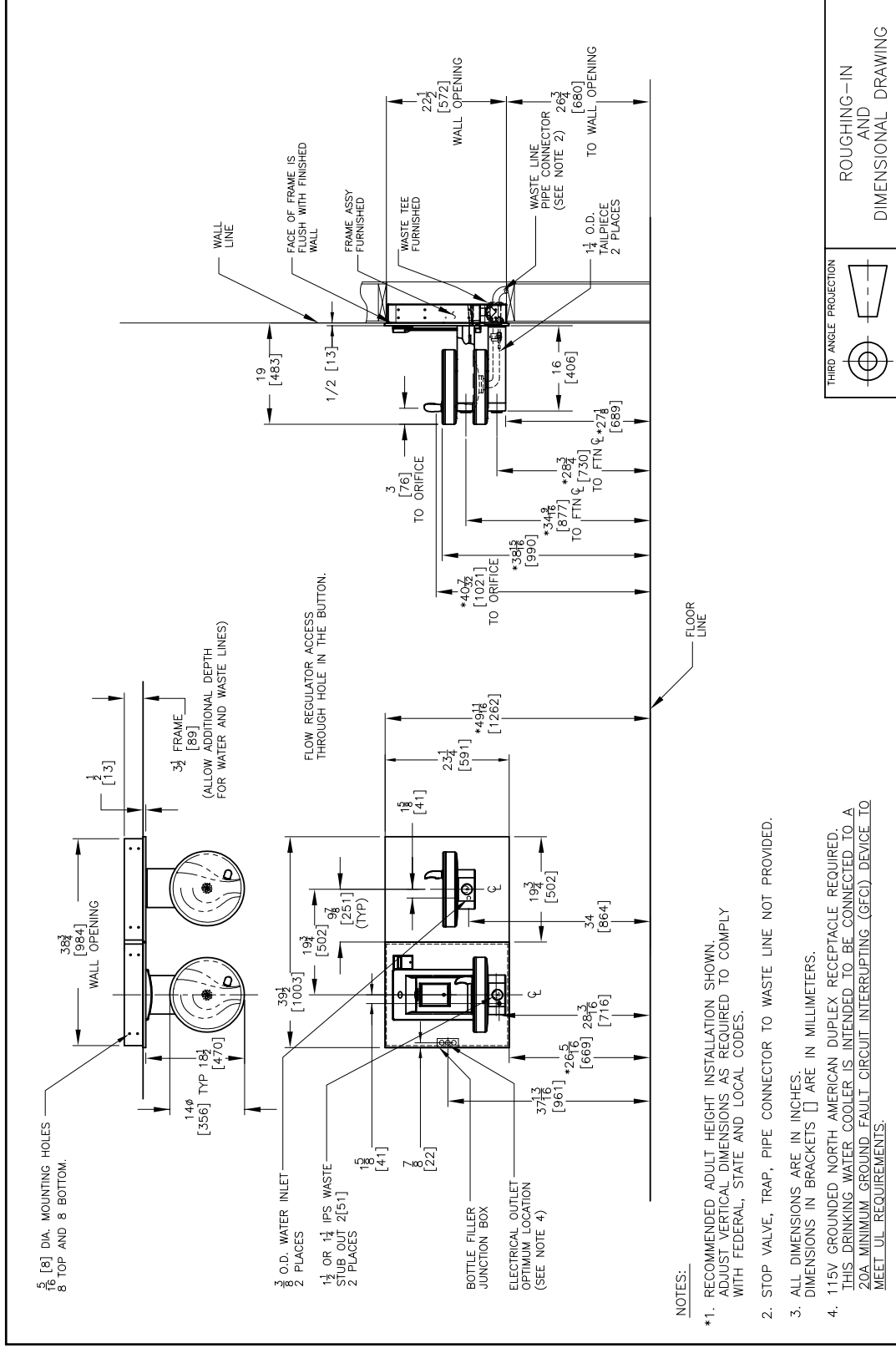


Model	50° F Drinking Water 90° F Ambient Air Temp*			Hot* Cold™ Model	115 Volts, 60 HZ			Glass Filler Acc. Option	Cabinet Color Finish	Net Wt. Approx.
	Rated Capacity GPH	Base Rate GPH	Pre-Cooler		Compr. HP	Full Load Amps	Rated Watts			
MMRSELEBF	0.0	0.0	No	No	-	.20	11	No	No	72lbs

\*Industry standard rating condition 80° F inlet water temperature

\*\*Special export models available, operable on 220-240 volts, 50/60 Hertz. cULUS certification not applicable.

# OASIS® DUAL HEIGHT FOUNTAIN WITH RECESSED ELECTRONIC BOTTLE FILLER



OASIS INTERNATIONAL

222 East Campus View Blvd.  
Columbus, OH 43235

www.oasiscoolers.com

1-800-646-2747

OASIS is a registered trademark of LVD Acquisition, LLC dba OASIS International, © 2020 LVD Acquisition AS0046-F-2003