



We Know Water.

MODULAR CONTACTLESS QUASAR® VERSAFILLER

- MWEBQ
- MW8EBQ
- MW12EBQ

Suggested Specification

Model MW8EBQ shall deliver 8.0 gph of 50°F water at 90°F ambient and 80°F inlet water per ASHRAE 18 testing. Model MW12EBQ shall deliver 12.0 gph of 50°F water at 90°F ambient and 80°F inlet water per ASHRAE 18 testing. Model MWEBQ is a non-refrigerated unit. Shall be recessed in design. Water flow to the bottle filler is by means of an electronically activated solenoid.

QUASAR bottle filler shall have UV-C LED treatment at the dispense point, which disinfects the water while it is being dispensed. UV-C LED also cycles on periodically to keep the dispense point sanitized between dispenses.

Shall include the Aqua Pointe™ Bottle Filler with contactless activation and laminar flow. Bottle Filler alcove and cabinet finish shall be stainless steel. Key Aqua Pointe™ bottle filler components contain Freshield®, which utilizes a silver-based antimicrobial compound to protect the surfaces from discoloration, odors and degradation caused by the growth of micro-organisms and mildew. Shall use R-134a refrigerant. Shall comply with ANSI 117.1 and ADA. Shall be listed by Underwriters Laboratories to US and Canadian standards. Shall comply with NSF/ANSI 61 and NSF/ANSI 372.



Installation

- Prior to rough-in consult with local, state and federal codes for proper mounting height
- Shipped with complete instructions
- Recessed mounting frame included, but water supply and drain required

Finishes

- Standard cabinet finish: Stainless steel

Options

- OASIS VersaFilter III Kit 041253-001
- Remedi Filter

Limited 5-Year Warranty

(Continental limits of the United States and Canada) Five years on the sealed refrigeration system and most component parts. Detailed warranty certificate enclosed with each water cooler; sample available upon request.

Export Warranty

One year on components parts. Detailed warranty certificate enclosed with each drinking fountain; sample copy available upon request.

Certifications/Compliance

- Certified to UL 399 and CAN/CSA C22.2 No.120 (electric water coolers only)
- Product Certified to NSF/ANSI Standard 61-G & 372 and conforms with the lead content requirements for "Lead Free" plumbing as defined by California, Vermont, Maryland, and Louisiana state laws and the U.S. Safe Drinking Water Act
- These water coolers comply with the requirements of ADA (Americans with Disabilities Act) when properly installed

	MW8EBQ	MW12EBQ	MWEBQ
Features:	<ul style="list-style-type: none"> • Contactless QUASAR with mercury-free UV-C LED treatment at the dispense point • Built-in 100 micron strainer stops particles before they enter the waterway • Waterways are Lead-Free in materials & construction • High efficiency cooling system • Heavy duty galvanized steel frame • Contactless activation bottle filler with programmable auto shut off • High efficiency cooling system • Built-in filter monitor and bottle counter • Logos permanently formed into the alcove and stainless steel wrapper • LED lighted alcove • Built in panel locks for easy access to chiller and filtration 		
Filtration:	Option to add filtration		
Power:	115 Volts, 60 Hz		
Activation By:	Contactless Sensor for bottle filler		
Mounting Type:	In Wall		
Chilling Option:	8.0 gph*	12.0 gph*	Non-Refrigerated
Full Load Amps:	5.0 amps	5.4 amps	0.40 amps
Rated Watts:	500	540	25
Approx. Net Weight:	83 lbs	87 lbs	32 lbs
Installation Location:	Indoor		



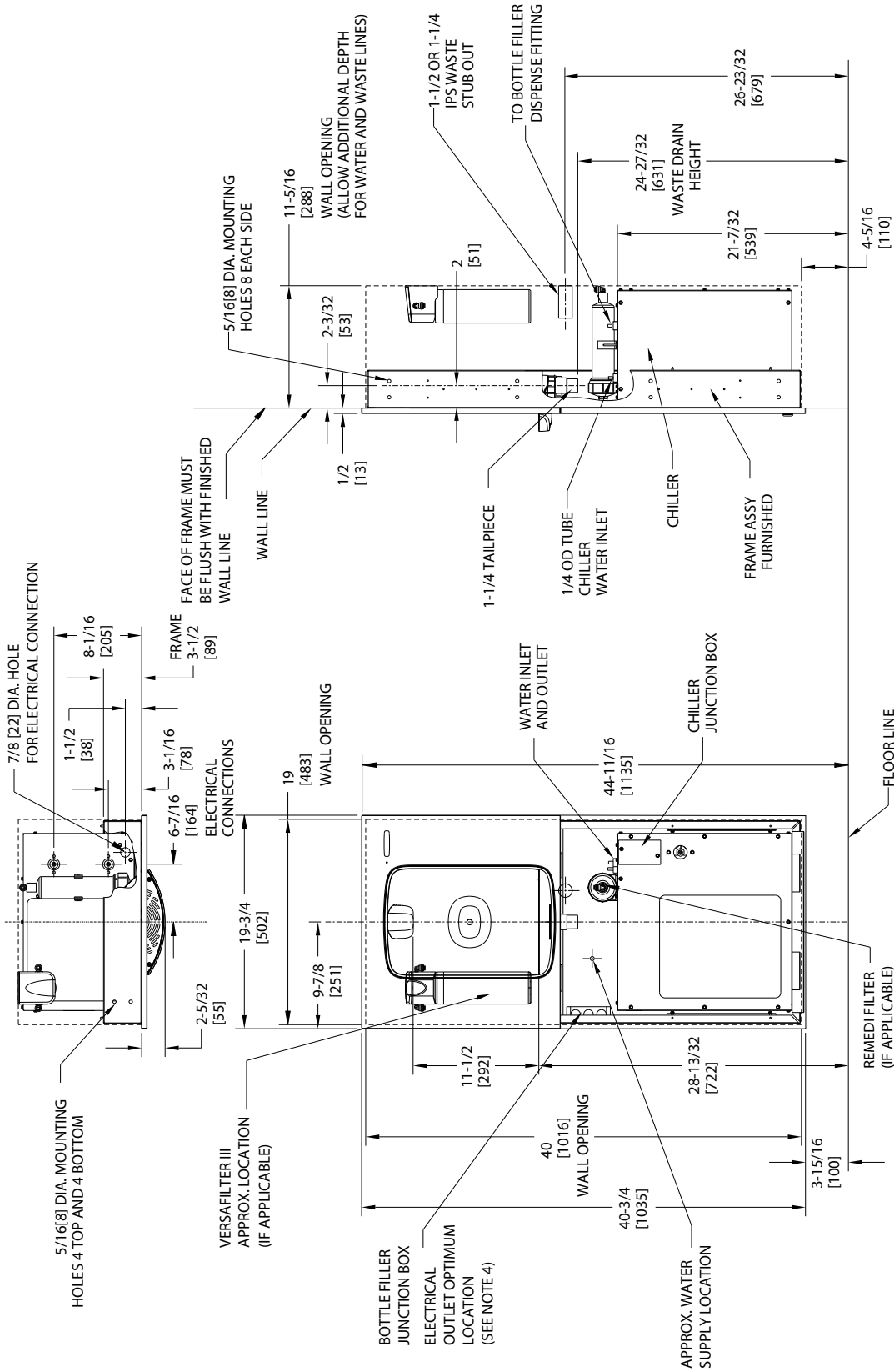
WARNING:
Cancer and Reproductive Harm
www.P65Warnings.ca.gov



*Industry standard rating condition at 90°F ambient, 80°F inlet water and 50°F drinking water temperature

Specifications subject to change without notice

MODULAR CONTACTLESS QUASAR® VERSAFILLER



NOTES:

1. RECOMMENDED ADULT HEIGHT INSTALLATION SHOWN. ADJUST VERTICAL DIMENSIONS AS REQUIRED TO COMPLY WITH FEDERAL, STATE AND LOCAL CODES.
2. STOP VALVE, TRAP, PIPE CONNECTOR TO WASTE LINE NOT PROVIDED. SHORT RADIUS TRAP REQUIRED.
3. ALL DIMENSIONS ARE IN INCHES. DIMENSIONS IN [] ARE IN MILLIMETERS.
4. 115V GROUNDING NORTH AMERICAN DUPLEX RECEPTACLE REQUIRED. THIS DRINKING WATER COOLER IS INTENDED TO BE CONNECTED TO A 20A MINIMUM GROUND FAULT CIRCUIT INTERRUPTING (GFCI) DEVICE TO MEET UL REQUIREMENTS.
5. FILTER INSTALLATION LOCATIONS WILL VARY BY MODEL.